

Broadband Gateway Extender

1 Getting started

To install and use the Broadband Gateway Extender, you will need the following (not included):

- Home Heartbeat Starter Pack
- Broadband service
- Cable or DSL modem
- Cable/DSL router with a free LAN port
- Access to an Internet browser

You may also need:

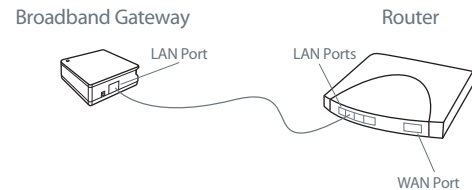
- 1 additional Ethernet cable

After you have successfully installed the Home Heartbeat Starter Pack (which includes at least one sensor), you can install the Broadband Gateway.

2 Connect

CARRY the Broadband Gateway Extender and the Home Key to the location of your Cable/DSL modem and router.*

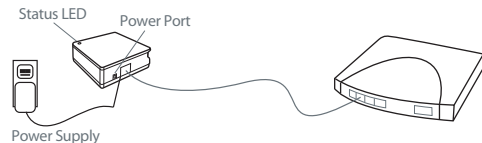
Using the enclosed Ethernet cable, plug one end into the LAN port on the Broadband Gateway Extender, and the other into a free LAN port on the router.



* If you purchased a router in order to add the Broadband Gateway Extender to your network, follow the manufacturer's instructions to install. NOTE: All interconnecting equipment must be UL Listed.

3 Plug in and set up

PLUG the Broadband Gateway Extender into a wall outlet. The green Status LED light on the top will blink quickly several times.



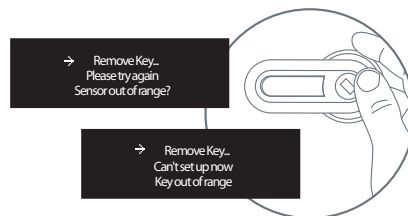
After the light stops blinking, CLICK the thumbwheel to wake the Home Key if it is asleep, then SLIDE the Home Key into the Slide Channel on the top of the Broadband Gateway Extender.

The Home Key screen should say:



Follow the instructions on the Home Key screen to join the sensor to your system and name it.

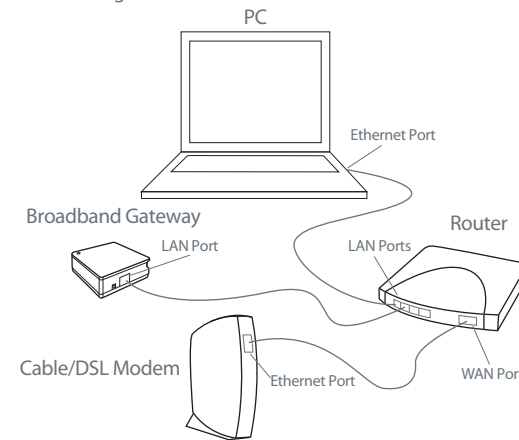
NOTE: If you slide the Home Key into the Broadband Gateway Extender Slide Channel and the Home Key screen shows either of the following messages, it means that the Home Key or sensor may be outside the range of the Base Station.



If the Home Key or sensor is out of range, you can:

- Add a Home Heartbeat Range Extender between the Base Station and Broadband Gateway Extender,
- select an alternate location in your home for the Broadband Gateway Extender that is still within reach of your modem and router, or
- try moving the Base Station to a more central location in your our home. Then, complete Step 2 and 3 again.

After you have made the connections, your setup should look something like this:

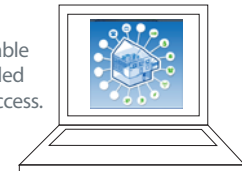


4 Register

To monitor your home online, you must register the Broadband Gateway Extender.

Visit www.MyHomeHeartbeat.com. Choose a name and password, enter the ID number (found on the bottom of the unit), and input your account settings.

After you've registered, you will be able to monitor the sensors you've installed from anywhere you have internet access.



5 Confirm Gateway-Portal Link

Verify that the Portal is receiving data from the Gateway by triggering an alert from one of your installed sensors. For example, open and close a door that you have set to "Alarm on open."



Need help? Call 1-800-813-2199 for customer support or visit www.MyHomeHeartbeat.com

If Your Broadband Gateway Extender ...

- will not respond, make sure the outlet it is plugged into has power.
- does not show the status of your sensors online, make sure that all cables connected to the devices are plugged in correctly and securely.

Eaton can not take responsibility for the transmission time required for alerts to contact your cell phone or email, as it is regulated by your service provider.

EATON

6 Changing sensor settings online

If you want to change sensor and device settings while logged into the website, you need to configure your router to allow port forwarding.*

* Most routers have detailed instructions about this setting and firewall protection features in a section called "Virtual Servers" or "Forwarding."

Type your router's IP address into your web browser address bar and login to the router. Select the DHCP page and locate the Broadband Gateway Extender ID in the Dynamic DHCP Client List. To ensure that the Broadband Gateway address remains fixed, it is recommended that the DHCP be set to Static DHCP.

Select the Virtual Server page (usually located in the Advanced section). Add a Virtual Server that forwards TCP connections to port 1136 to the IP address used by the Broadband Gateway Extender.

For complete details or instructions go to:
www.MyHomeHeartbeat.com/help/

7 IMPORTANT

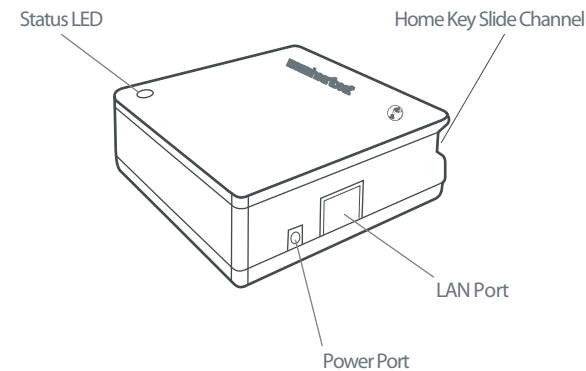
Do not connect the telephone cable supplied with the Base Station. If you have already connected the telephone cable to the Base Station, disconnect it if you are using the Broadband Gateway Extender.

8 Maintenance

The Broadband Gateway Extender is for indoor use only.

There are no serviceable parts. Clean with a soft, dry cloth.

Broadband Gateway Extender Components



Broadband Gateway Extender Uses:

Learn about the status of your home from any place with an internet connection, and extend the transmission zone to reach sensors that are farther away from the Base Station.*
Perfect for monitoring your home:

- while at work
- when travelling for business
- when on vacation
- anytime you're away from home

*actual range may vary, depending on the location of the Base Station and home construction

FCC Statement

(Compliance Statement, Part 15.19): This device complies with Part 15 of the FCC Rules. Operation is subject to the following two conditions: (1) this device may not cause harmful interference, and (2) this device must accept any interference received, including interference that may cause undesired operation.

WARNING (Part 15.21): Changes or modifications not expressly approved by the party responsible for compliance could void the user's authority to operate this equipment.

To comply with FCC's RF exposure limits for general population/uncontrolled exposure, the antenna(s) used for this transmitter must be installed to provide a separation distance of at least 20 cm from all persons and must not be co-located or operating in conjunction with any other antenna or transmitter.

Industry Canada Statement

The term "IC" before the certification/registration number only signifies that the Industry Canada technical specifications were met.

Interference

This equipment has been tested and found to comply with the limits for a Class B digital device, pursuant to Part 15 of the FCC rules. These limits are designed to provide reasonable protection against harmful interference in a residential installation. This equipment generates, uses, and can radiate radio frequency energy and, if not installed and used in accordance with the instructions, may cause harmful interference to radio communications. However, there is no guarantee that interference will not occur in a particular installation. If this equipment does cause harmful interference to radio or television reception, which can be determined by turning the equipment off and on, then the user is encouraged to try to correct the interference by one or more of the following measures:

- Reorient or relocate the receiving antenna
- Increase the separation between the equipment and the receiver
- Connect the equipment into a power source on different circuit than the receiver.

IM00416013E Rev. 1
Part No.: 67A5035H01
© 2006 Eaton Corporation

EATON

EATON

HOMEheartbeat™

 Broadband Gateway Extender