

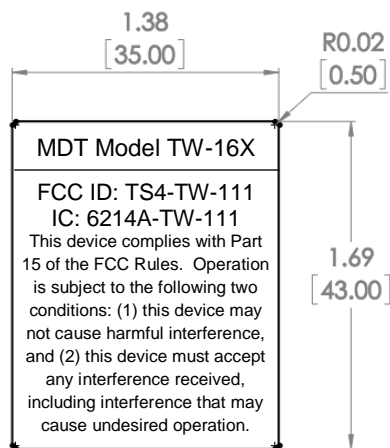
Spec for MDT FCC Label

Requirements:

Size: 1.38 in. wide x 1.69 in. high (38.00 mm wide x 43.00 mm high)
Material: Nylon or Mylar
Background Color: Light gray or silver
Text Color: Black
Adhesive: Permanent, surface is polished ABS
Permanence: The sticker should not be removable under normal circumstances. If removal is attempted, the label should break up (much like DMV license plate stickers do).

Quantities: Quote for 500 pieces.

Spec is identical (except for text) to prior quote 44579.



Text or artwork can be supplied. If artwork, please specify preferred format.

Text is as follows:

MDT Model: TW-16X

FCC ID: TS4-TW-111
IC: 6214A-TW-111

This device complies with Part 15 of the FCC Rules. Operation is subject to the following two conditions: (1) this device may not cause harmful interference, and (2) this device must accept any interference received, including interference that may cause undesired operation.