
REPORT ON

Specific Absorption Rate Testing of the Arcom CT-I-1-E
Cyber Tracker Device

Report No WS200044/01 Issue 1

December 2005



Product Service





Product Service

Competence. Certainty. Quality.

TUV Product Service Ltd, Octagon House, Concorde Way, Segensworth North,
Fareham, Hampshire, United Kingdom, PO15 5RL
Tel: +44 (0) 1489 558100. Website: www.tuvps.co.uk; www.babt.com

REPORT ON Specific Absorption Rate Testing of the Arcom Cyber Tracker CT-I-1-E Device

Report No: WS200044/01 Issue 1.

PREPARED FOR Arcom
Clifton Road
Cambridge
CB1 7EA

ATTESTATION The wireless portable device described within this report has been shown to be capable of compliance for localised specific absorption rate (SAR) for FCC standard Supplement C (Edition 01-01) to OET Bulletin 65 (Edition 97-01) and RSS-102 Issue 1 (Provisional) September 25, 1999 of 1.6 W/kg.

The measurements shown in this report were made in accordance with the procedures specified in Supplement C (Edition 01-01) to OET Bulletin 65 (Edition 97-01).

All reported testing was carried out on a sample of equipment to demonstrate compliance with the above standards. The sample tested was found to comply with the requirements in the applied rules.

A. Miller
SAR Test Engineer

APPROVED BY

M J Hardy
Authorised Signatory

DATED

22nd December 2005

Note: The test results reported herein relate only to the item tested as identified above and on the Status Page.

CONTENTS

Section	Page No
1	REPORT SUMMARY
1.1	Status 4
1.2	Summary 5
1.3	Test Results Summary 6
1.4	EIRP Results 7
2	TEST DETAILS
2.1	SAR Measurement System 9
	2.1.1 Robot System Specification
	2.1.2 Probe and Amplifier Specification
	2.1.3 SAR Measurement Procedure
2.2	SAR Distributions (Area Scans – 2D)..... 14
3	TEST EQUIPMENT
3.1	Test Equipment 25
3.2	Test Software 25
3.3	Dielectric Properties of Simulant Liquids..... 26
3.4	Test Conditions..... 27
3.5	Measurement Uncertainty 28
4	PHOTOGRAPHS
4.1	Test Positional Photographs 30
4.2	Photographs of Equipment Under Test (EUT)... 32
5	DISCLAIMERS AND COPYRIGHT
5.1	Disclaimers and Copyright..... 35
ANNEX A	Probe Calibration Information..... A.2

SECTION 1

REPORT SUMMARY

Specific Absorption Rate Testing of the Arcom CT-I-1-E
Cyber Tracker Device

Max 1g SAR (W/kg)	0.235
The maximum 1g volume averaged SAR level measured for all the tests performed did not exceed the limits for General Population/Uncontrolled Exposure (W/kg) Partial Body of 1.6 W/kg level defined in Supplement C (Edition 01-01) to OET Bulletin 65 (97-01).	

1.1 STATUS

MANUFACTURING DESCRIPTION	Tracking Device
STATUS OF TEST	Specific Absorption Rate Testing
APPLICANT	Arcom
MANUFACTURER	Arcom
TYPE OR MODEL NUMBER	CT-I-1-E
HARDWARE VERSION	CYBER TRACKER-I-ETH SBC V1I3 CYBERTRACKER SPLITTER V1I2
SERIAL NUMBER	110000001
BATTERY MANUFACTURER	Shenzhen Grepow Battery Company Limited
MODEL NUMBER	Battery Cell: Grepow - Part No.: GRPH-AA 4-cell battery assembly; Arcom Part No.: 7001-13865-001-101

TEST SPECIFICATIONS:

1. FCC Publication Supplement C (Edition 01-01) to OET Bulletin 65 (Edition 97-01): Evaluating Compliance with FCC Guidelines for Human Exposure to Radio Frequency Electromagnetic Fields – Additional Information for evaluating Compliance of Mobile and Portable Devices with FCC Limits for Human Exposure to Radiofrequency Emissions

REFERENCES:

2. IEEE 1528 – 2003: Recommended Practice for Determining the Peak Spatial-Average Specific Absorption Rate (SAR) in the Human Body Due to Wireless Communications Devices: Experimental Techniques
3. Council Recommendations 1999/519/EC on the limitations of exposure of the general public to electromagnetic fields (0 Hz - 3 GHz) annex II.

BABT REGISTRATION NUMBER:	WS200044
RECEIPT OF TEST SAMPLES:	22 nd November 2005
START OF TEST:	23 rd November 2005
FINISH OF TEST:	23 rd November 2005

1.2 SUMMARY

The Arcom CT-I-1-E Cyber Tracker device supplied for Specific Absorption Rate (SAR) testing operates in the 800 - 900 TDMA bands. The testing was performed with batteries supplied and manufactured by Arcom, Battery Source: Shenzhen Grepow Battery Company Limited. The device ran on its battery and was fully charged before commencing the test and an RS232 Data Cable was used to connect the device to the serial port (COM1) on the PC. The Arcom CT-I-1-E Cyber Tracker is an iDEN[®] (Integrated Digital Enhanced Network) digital Private Mobile Radio System.

The io200 RF Tester Version A01.01 application was used on the PC to test the RF functionality of the product. Tests were conducted at fixed frequencies with a baud of 19200 used. The predefined script which was selected was the transmission of packet data at full power using 64 QAM (Quadrature Amplitude Modulation) which can effectively transmit 76,800 bps using this method. The script was entitled "TX 64 QAM HIGH POWER PACKET DATA".

For body SAR assessment, testing was performed at maximum power. The device was placed at distance of 0 mm from the bottom of the flat phantom for all body testing. The Cube Phantom dimensions were 210mm x 210mm x 210mm with a sidewall thickness of 2.00mm. The phantom was filled to a minimum depth of 150mm with the appropriate Body simulant liquid. The dielectric properties were in accordance with the requirements for the dielectric properties specified in Supplement C (Edition 01-01) to OET Bulletin 65 (Edition 97-01).

Testing was performed at 813.5625MHz with the device tested in front facing and rear facing configuration to the cube phantom. The position which gave the worst case SAR was then assessed at the following frequencies: 806.0625MHz, 820.9875MHz and 824.9875MHz. Testing was then performed at 898.51875MHz with the device tested in front facing and rear facing configuration to the cube phantom. The position which gave the worst case SAR was then assessed at the following frequencies: 896.01875MHz, 900.98125MHz and 901.98125MHz.

The device was transmitting with High-Speed Downlink Packet Access (64QAM) modulation.

The Arcom Cyber Tracker had an integral antenna so that the requirement for testing with antenna extended and retracted was not applicable.

Included in this report are descriptions of the test method; the equipment used and an analysis of the test uncertainties applicable and diagrams indicating the locations of maximum SAR for each test position along with photographs indicating the positioning of the device against the body as appropriate.

The maximum 1g volume averaged SAR level measured for all the tests performed did not exceed the limits for General Population/Uncontrolled Exposure (W/kg) Partial Body of 1.6 W/kg. Level defined in Supplement C (Edition 01-01) to OET Bulletin 65 (97-01).

1.3 TEST RESULT SUMMARY

SYSTEM PERFORMANCE / VALIDATION CHECK RESULTS

Prior to formal testing being performed a System Check was performed in accordance with FCC Publication Supplement C (Edition 01-01) to OET Bulletin 65 (Edition 97-01) [1] and the results were compared against published data in Standard IEEE 1528-2003 [2]. The following results were obtained: -

Date	Dipole Used	Frequency (MHz)	Max 1g SAR (W/kg)	Percentage Drift on Reference	Max 10g SAR (W/kg)	Percentage Drift on Reference
22/11/2005	900	907.5	11.02	2.07%	7.05	2.24%

*Normalised to a forward power of 1W

800 BODY Specific Absorption Rate (Maximum SAR) 1g & 10g Results for the Arcom CT-I-1-E Cyber Tracker with standard antenna & battery

Position		Channel Number	Frequency (MHz)	Max Spot SAR (W/kg)	Max 1g SAR (W/kg)	Max 10g SAR (W/kg)	SAR Drift (%)	Area scan (Figure number)
Spacing From Phantom	Mobile Position							
0mm	Front Facing	605	813.5625	0.20	0.235	0.141	-4.17	Figure 4
0mm	Rear Facing	605	813.5625	0.06	0.074	0.049	-0.83	Figure 5
0mm	Front Facing	5	806.0625	0.16	0.189	0.120	-1.25	Figure 6
0mm	Front Facing	1199	820.9875	0.13	0.159	0.101	-1.83	Figure 7
0mm	Front Facing	1519	824.9875	0.18	0.225	0.125	-4.80	Figure 8
Limit for General Population (Uncontrolled Exposure) 1.6 W/kg (1g) & 2.0 W/kg (10g)								

900 BODY Specific Absorption Rate (Maximum SAR) 1g & 10g Results for the Arcom CT-I-1-E Cyber Tracker with standard antenna & battery

Position		Channel Number	Frequency (MHz)	Max Spot SAR (W/kg)	Max 1g SAR (W/kg)	Max 10g SAR (W/kg)	SAR Drift (%)	Area scan (Figure number)
Spacing From Phantom	Mobile Position							
0mm	Front Facing	201	898.51875	0.14	0.171	0.099	-4.91	Figure 9
0mm	Rear Facing	201	898.51875	0.04	0.048	0.032	7.21	Figure 10
0mm	Front Facing	1	896.01875	0.14	0.170	0.092	-1.66	Figure 11
0mm	Front Facing	398	900.98125	0.14	0.165	0.093	-2.53	Figure 12
0mm	Front Facing	478	901.98125	0.13	0.154	0.089	3.86	Figure 13
Limit for General Population (Uncontrolled Exposure) 1.6 W/kg (1g) & 2.0 W/kg (10g)								

1.4 OUTPUT POWER OF TEST DEVICE MEASUREMENT METHOD

The EUT was set up to Transmit on all of the following frequencies (See Table Below) using the Full Power Software Scripts provided.

Firstly, the O/P levels were checked into a Spectrum Analyser, to check for general O/P levels (Test Equipment protection exercise).

Two 10dB attenuators were used with all of the necessary adaptors to allow connection between the EUT and the Peak Power Analyser which will be used for Final Measurements.

The path loss of all of the required adaptors and attenuators was checked using a Signal Generator and a Power Meter (via the Adaptors and Attenuators). The level of path loss found between 806MHz – 902MHz was found to be 19.97dBm, so the Offset Level of 19.97dB was programmed into the Peak Power Analyser, all ready for the Final measurements.

The following table is the results of conducted power measurements recorded from the Arcom CT-I-1-E Cyber Tracker device.

Temperature (°C)	Relative Humidity (%)	Atmospheric Pressure (mbar)
21.0	38	1003

Channel	Output Power dBm	Output Power mW
806.06250	28.45	699.84
813.56250	27.82	605.34
820.98750	27.47	558.47
824.98750	28.51	709.58
896.018750	26.14	411.14
898.518750	27.38	547.02
900.981250	26.24	420.73
901.981250	26.51	447.71

SECTION 2

TEST DETAILS

Specific Absorption Rate Testing of the Arcom
CT-I-1-E Cyber Tracker Device

2.1 SAR MEASUREMENT SYSTEM

2.1.1 ROBOT SYSTEM SPECIFICATION

The SAR measurement system being used is the IndexSAR SARA2 system, which consists of a Mitsubishi RV-E2 6-axis robot arm and controller, IndexSAR probe and amplifier and SAM phantom Head Shape. The robot is used to articulate the probe to programmed positions inside the phantom head to obtain the SAR readings from the DUT.

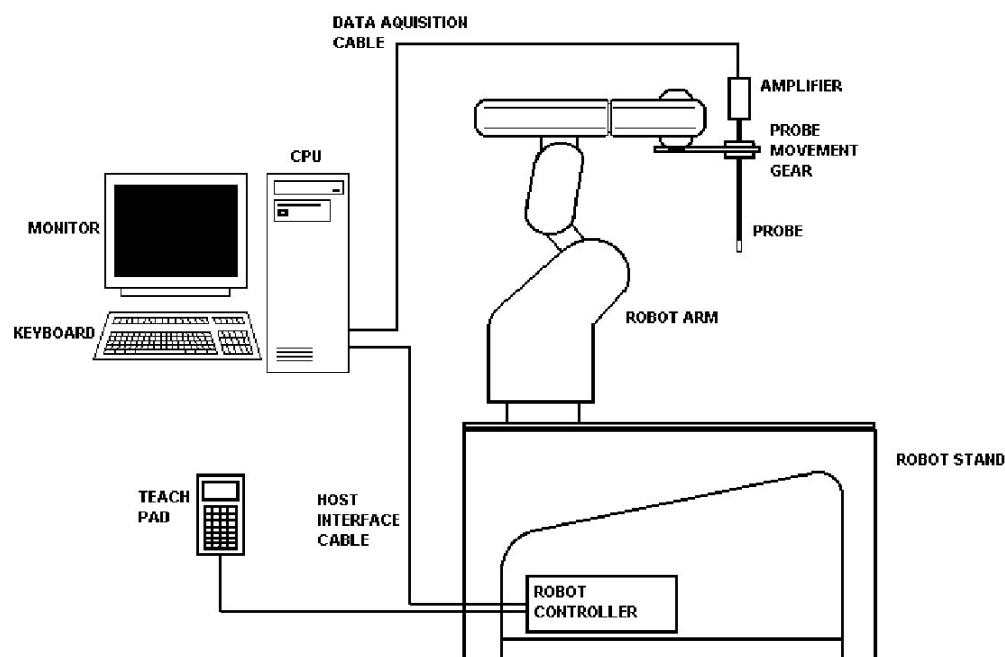


Figure 1: Schematic diagram of the SAR measurement system

The system is controlled remotely from a PC, which contains the software to control the robot and data acquisition equipment. The software also displays the data obtained from test scans.

The position and digitised shape of the phantom heads are made available to the software for accurate positioning of the probe and reduction of set-up time.

The SAM phantom heads are individually digitised using a Mitutoyo CMM machine to a precision of 0.001mm. The data is then converted into a shape format for the software, providing an accurate description of the phantom shell.

In operation, the system first does an area (2D) scan at a fixed depth within the liquid from the inside wall of the phantom. When the maximum SAR point has been found, the system will then carry out a 3D scan centred at that point to determine volume averaged SAR level.

2.1 SAR MEASUREMENT SYSTEM

2.1.2 PROBE AND AMPLIFIER SPECIFICATION

IXP-050 Indexsar isotropic immersible SAR probe

The probes are constructed using three orthogonal dipole sensors arranged on an interlocking, triangular prism core. The probes have built-in shielding against static charges and are contained within a PEEK cylindrical enclosure material at the tip. Probe calibration is described in the following section.

IFA-010 Fast Amplifier

Technical description of Indexsar IFA-010 Fast probe amplifier

A block diagram of the fast probe amplifier electronics is shown below.

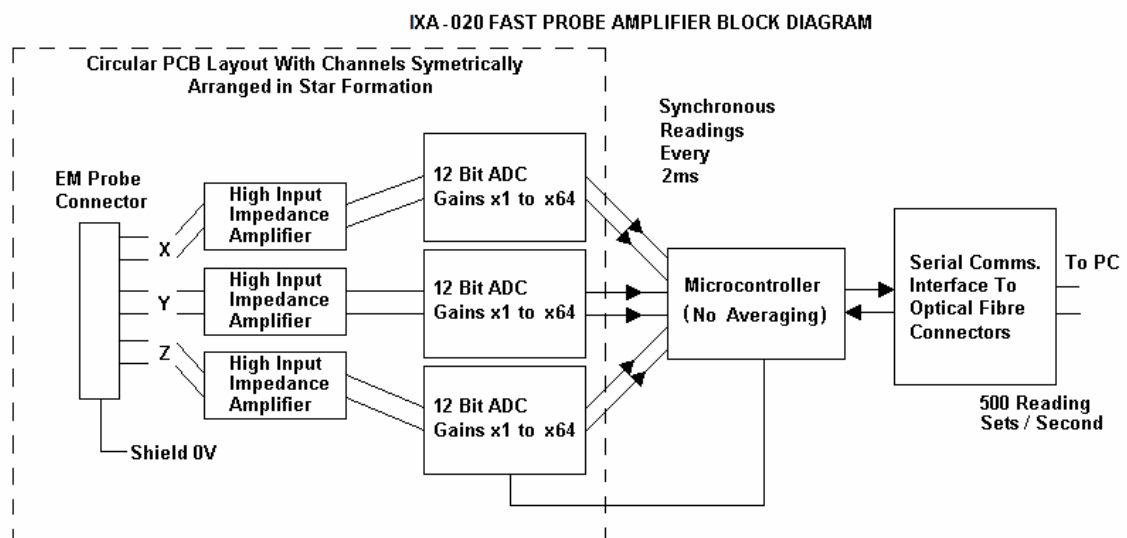


Figure 2: Block diagram of the fast probe amplifier electronic

This amplifier has a time constant of approx. $50\mu\text{s}$, which is much faster than the SAR probe response time. The overall system time constant is therefore that of the probe ($<1\text{ms}$) and reading sets for all three channels (simultaneously) are returned every 2ms to the PC. The conversion period is approx. $1\mu\text{s}$ at the start of each 2ms period. This enables the probe to follow pulse modulated signals of periods $\gg 2\text{ms}$. The PC software applies the linearisation procedure separately to each reading, so no linearisation corrections for the averaging of modulated signals are needed in this case. It is important to ensure that the probe reading frequency and the pulse period are not synchronised and the behaviour with pulses of short duration in comparison with the measurement interval need additional consideration.

Phantoms

The Flat phantom used is a rectangular Perspex Box IndexSAR item IXB-070. Dimensions 210w 210d 210h (mm). This phantom is used with IndexSAR side bench IXM-030.

The Specific Anthropomorphic Mannequin (SAM) Upright Phantom is fabricated using moulds generated from the CAD files as specified by CENELEC EN50361:2001. It is mounted via a rotation base to a supporting table, which also holds the robotic positioner. The phantom and robot alignment is assured by both mechanical and laser registration systems.

2.1 SAR MEASUREMENT SYSTEM

2.1.3 SAR MEASUREMENT PROCEDURE

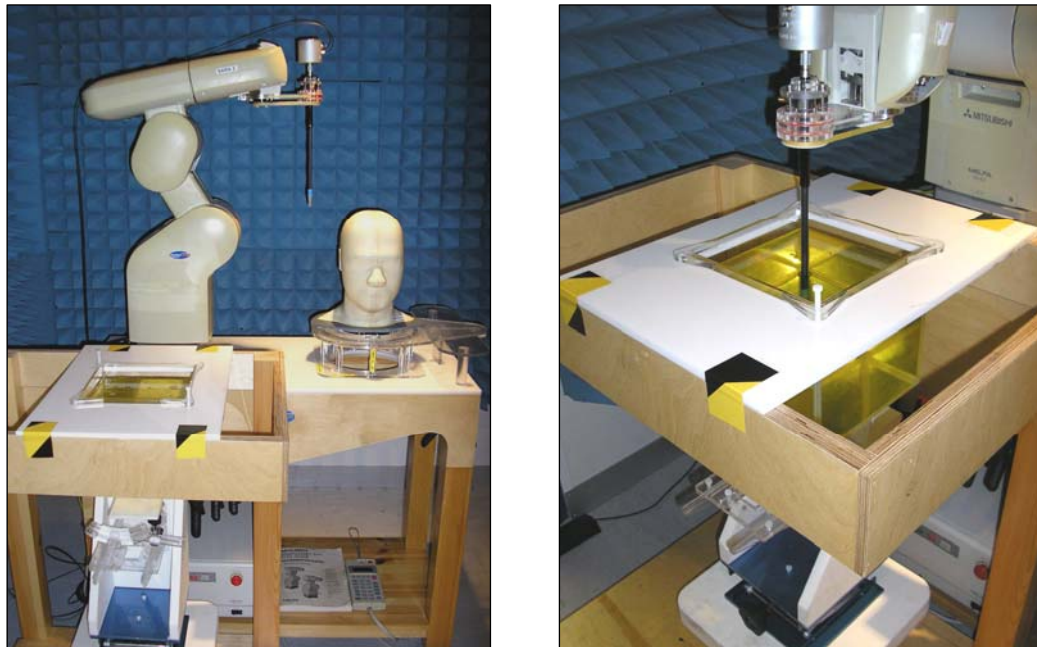


Figure 3: Principal components of the SAR measurement test bench

The major components of the test bench are shown in the picture above. A test set and dipole antenna control the handset via an air link and a low-mass phone holder can position the phone at either ear. Graduated scales are provided to set the phone in the 15 degree position. The upright phantom head holds approx. 7 litres of simulant liquid. The phantom is filled and emptied through a 45mm diameter penetration hole in the top of the head.

After an area scan has been done at a fixed distance of 8mm from the surface of the phantom on the source side, a 3D scan is set up around the location of the maximum spot SAR. First, a point within the scan area is visited by the probe and a SAR reading taken at the start of testing. At the end of testing, the probe is returned to the same point and a second reading is taken. Comparison between these start and end readings enables the power drift during measurement to be assessed.

SARA2 Interpolation and Extrapolation schemes

SARA2 software contains support for both 2D cubic B-spline interpolation as well as 3D cubic B-spline interpolation. In addition, for extrapolation purposes, a general n^{th} order polynomial fitting routine is implemented following a singular value decomposition algorithm presented in [4]. A 4th order polynomial fit is used by default for data extrapolation, but a linear-logarithmic fitting function can be selected as an option. The polynomial fitting procedures have been tested by comparing the fitting coefficients generated by the SARA2 procedures with those obtained using the polynomial fit functions of Microsoft Excel when applied to the same test input data.

Interpolation of 2D area scan

The 2D cubic B-spline interpolation is used after the initial area scan at fixed distance from the phantom shell wall. The initial scan data are collected with approx. 115mm spatial resolution and spline interpolation is used to find the location of the local maximum to within a 1mm resolution for positioning the subsequent 3D scanning.

2.1 SAR MEASUREMENT SYSTEM

2.1.3 SAR MEASUREMENT PROCEDURE - continued

Extrapolation of 3D scan

For the 3D scan, data are collected on a spatially regular 3D grid having (by default) 6.4 mm steps in the lateral dimensions and 3.5 mm steps in the depth direction (away from the source). SARA2 enables full control over the selection of alternative step sizes in all directions.

The digitised shape of the head is available to the SARA2 software, which decides which points in the 3D array are sufficiently well within the shell wall to be 'visited' by the SAR probe. After the data collection, the data are extrapolated in the depth direction to assign values to points in the 3D array closer to the shell wall. A notional extrapolation value is also assigned to the first point outside the shell wall so that subsequent interpolation schemes will be applicable right up to the shell wall boundary.

Interpolation of 3D scan and volume averaging

The procedure used for defining the shape of the volumes used for SAR averaging in the SARA2 software follow the method of adapting the surface of the 'cube' to conform with the curved inner surface of the phantom (see Appendix C.2.2.1 in EN 50361:2001). This is called, here, the conformal scheme.

For each row of data in the depth direction, the data are extrapolated and interpolated to less than 1mm spacing and average values are calculated from the phantom surface for the row of data over distances corresponding to the requisite depth for 10g and 1g cubes. This results in two 2D arrays of data, which are then cubic B-spline interpolated to sub mm lateral resolution. A search routine then moves an averaging square around through the 2D array and records the maximum value of the corresponding 1g and 10g volume averages. For the definition of the surface in this procedure, the digitised position of the headshell surface is used for measurement in head-shaped phantoms. For measurements in rectangular, box phantoms, the distance between the phantom wall and the closest set of gridded data points is entered into the software.

For measurements in box-shaped phantoms, this distance is under the control of the user. The effective distance must be greater than 2.5mm as this is the tip-sensor distance and to avoid interface proximity effects, it should be at least 5mm. A value of 6 or 8mm is recommended. This distance is called **dbe** in EN 50361:2001.

For automated measurements inside the head, the distance cannot be less than 2.5mm, which is the radius of the probe tip and to avoid interface proximity effects, a minimum clearance distance of x mm is retained. The actual value of **dbe** will vary from point to point depending upon how the spatially-regular 3D grid points fit within the shell. The greatest separation is when a grid point is just not visited due to the probe tip dimensions. In this case the distance could be as large as the step-size plus the minimum clearance distance (i.e with $x=5$ and a step size of 3.5, **dbe** will be between 3.5 and 8.5mm).

The default step size (**dstep** in EN 50361:2001) used is 3.5mm, but this is under user-control. The compromise is with time of scan, so it is not practical to make it much smaller or scan times become long and power-drop influences become larger.

The robot positioning system specification for the repeatability of the positioning (**dss** in EN50361:2001) is ± 0.04 mm.

2.1 SAR MEASUREMENT SYSTEM

2.1.3 SAR MEASUREMENT PROCEDURE - continued

The phantom shell is made by an industrial moulding process from the CAD files of the SAM shape, with both internal and external moulds. For the upright phantoms, the external shape is subsequently digitised on a Mitutoyo CMM machine (Euro C574) to a precision of 0.001mm. Wall thickness measurements made non-destructively with an ultrasonic sensor indicate that the shell thickness (**dph**) away from the ear is 2.0 +/- 0.1mm. The ultrasonic measurements were calibrated using additional mechanical measurements on available cut surfaces of the phantom shells.

For the upright phantom, the alignment is based upon registration of the rotation axis of the phantom on its 253mm-diameter baseplate bearing and the position of the probe axis when commanded to go to the axial position. A laser alignment tool is provided (procedure detailed elsewhere). This enables the registration of the phantom tip (**dmis**) to be assured to within approx. 0.2mm. This alignment is done with reference to the actual probe tip after installation and probe alignment. The rotational positioning of the phantom is variable – offering advantages for special studies, but locating pins ensure accurate repositioning at the principal positions (LH and RH ears).

2.2 MAXIMUM 800 SAR TEST RESULT INCLUDING COURSE AREA SCAN – 2D

SYSTEM / SOFTWARE:	SARA2 / 2.39 VPM	INPUT POWER DRIFT:	0.0dB
DATE / TIME:	23/11/2005 22:31:49	DUT BATTERY MODEL/NO:	GRPH-AA
FILENAME:	WS200044_06.txt	PROBE SERIAL NUMBER:	170
AMBIENT TEMPERATURE:	22.7°C	LIQUID SIMULANT:	835 Body
DEVICE UNDER TEST:	Arcom Cyber Tracker	RELATIVE PERMITTIVITY:	57.01
RELATIVE HUMIDITY:	24.3%	CONDUCTIVITY:	0.981
PHANTOM S/NO:	CubePhantom.csv	LIQUID TEMPERATURE:	22.4°C
PHANTOM ROTATION:	0°	MAX SAR X-AXIS LOCATION:	-16.00 mm
DUT POSITION:	Front Facing Touch	MAX SAR Y-AXIS LOCATION:	-13.00 mm
ANTENNA CONFIGURATION:	Integral	MAX E FIELD:	14.10 V/m
TEST FREQUENCY:	813.5625MHz	SAR 1g:	0.235 W/kg
AIR FACTORS:	406 / 385 / 409	SAR 10g:	0.141 W/kg
CONVERSION FACTORS:	0.273 / 0.273 / 0.273	SAR START:	0.054 W/kg
TYPE OF MODULATION:	64QAM	SAR END:	0.052 W/kg
MODN. DUTY CYCLE:	100%	SAR DRIFT DURING SCAN:	-4.17 %
DIODE COMPRESSION FACTORS (V*200):	20 / 20 / 20	PROBE BATTERY LAST CHANGED:	21/11/05
INPUT POWER LEVEL:	Max	EXTRAPOLATION:	poly4

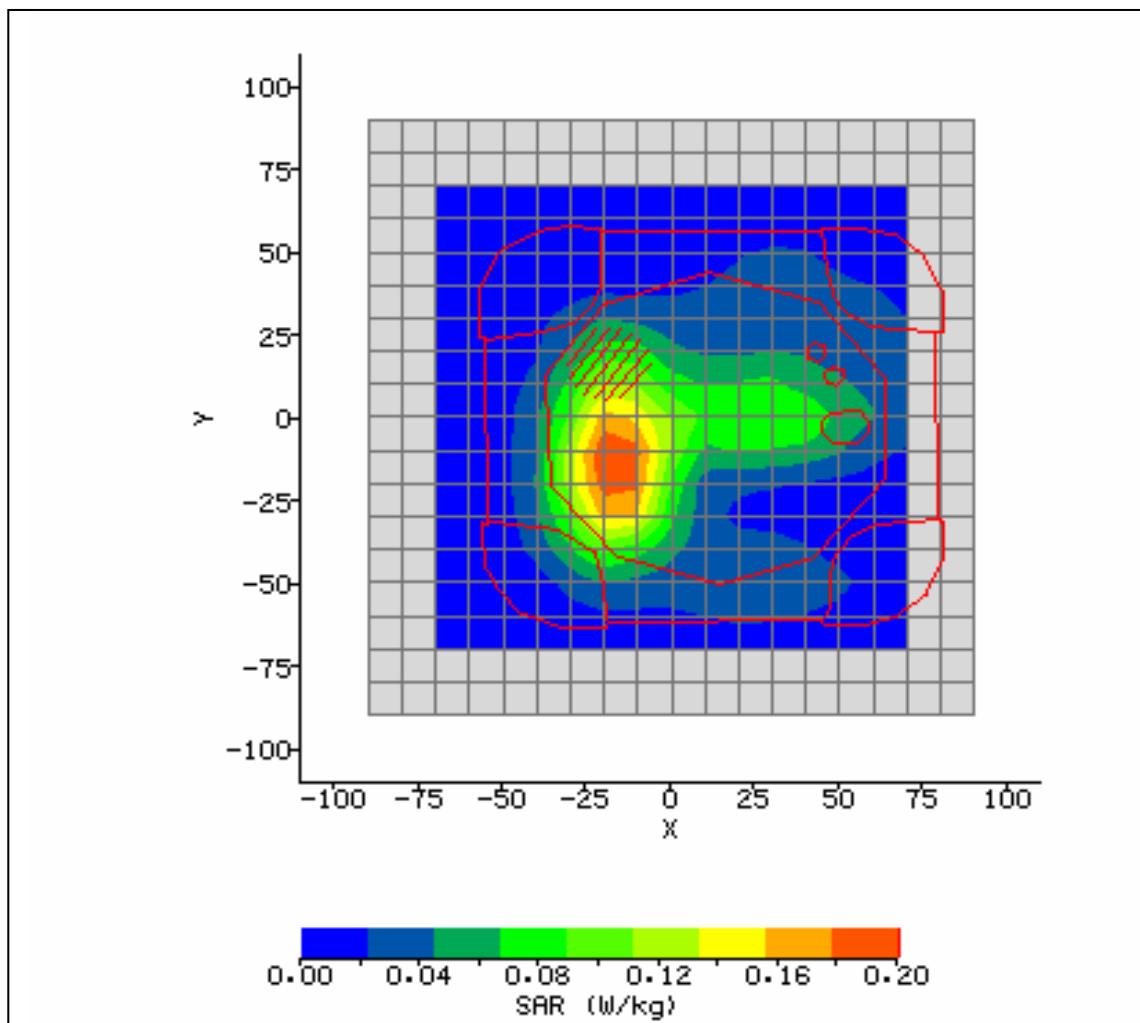


Figure 4: SAR Body Testing Results for the Arcom Cyber Tracker in Front Facing Phantom Position; Tested at 813.5625MHz with 0mm Separation Distance to the Phantom

2.2 MAXIMUM 800 SAR TEST RESULT INCLUDING COURSE AREA SCAN – 2D

SYSTEM / SOFTWARE:	SARA2 / 2.39 VPM	INPUT POWER DRIFT:	0.0dB
DATE / TIME:	23/11/2005 23:05:13	DUT BATTERY MODEL/NO:	GRPH-AA
FILENAME:	WS200044_07.txt	PROBE SERIAL NUMBER:	170
AMBIENT TEMPERATURE:	22.8°C	LIQUID SIMULANT:	835 Body
DEVICE UNDER TEST:	Arcom Cyber Tracker	RELATIVE PERMITTIVITY:	57.01
RELATIVE HUMIDITY:	24.1%	CONDUCTIVITY:	0.981
PHANTOM S/NO:	CubePhantom.csv	LIQUID TEMPERATURE:	22.4°C
PHANTOM ROTATION:	0°	MAX SAR X-AXIS LOCATION:	5.00 mm
DUT POSITION:	Rear Facing Touch	MAX SAR Y-AXIS LOCATION:	23.00 mm
ANTENNA CONFIGURATION:	Integral	MAX E FIELD:	8.09 V/m
TEST FREQUENCY:	813.5625MHz	SAR 1g:	0.074 W/kg
AIR FACTORS:	406 / 385 / 409	SAR 10g:	0.049 W/kg
CONVERSION FACTORS:	0.273 / 0.273 / 0.273	SAR START:	0.021 W/kg
TYPE OF MODULATION:	64QAM	SAR END:	0.021 W/kg
MODN. DUTY CYCLE:	100%	SAR DRIFT DURING SCAN:	-0.83 %
DIODE COMPRESSION FACTORS (V*200):	20 / 20 / 20	PROBE BATTERY LAST CHANGED:	21/11/05
INPUT POWER LEVEL:	Max	EXTRAPOLATION:	poly4

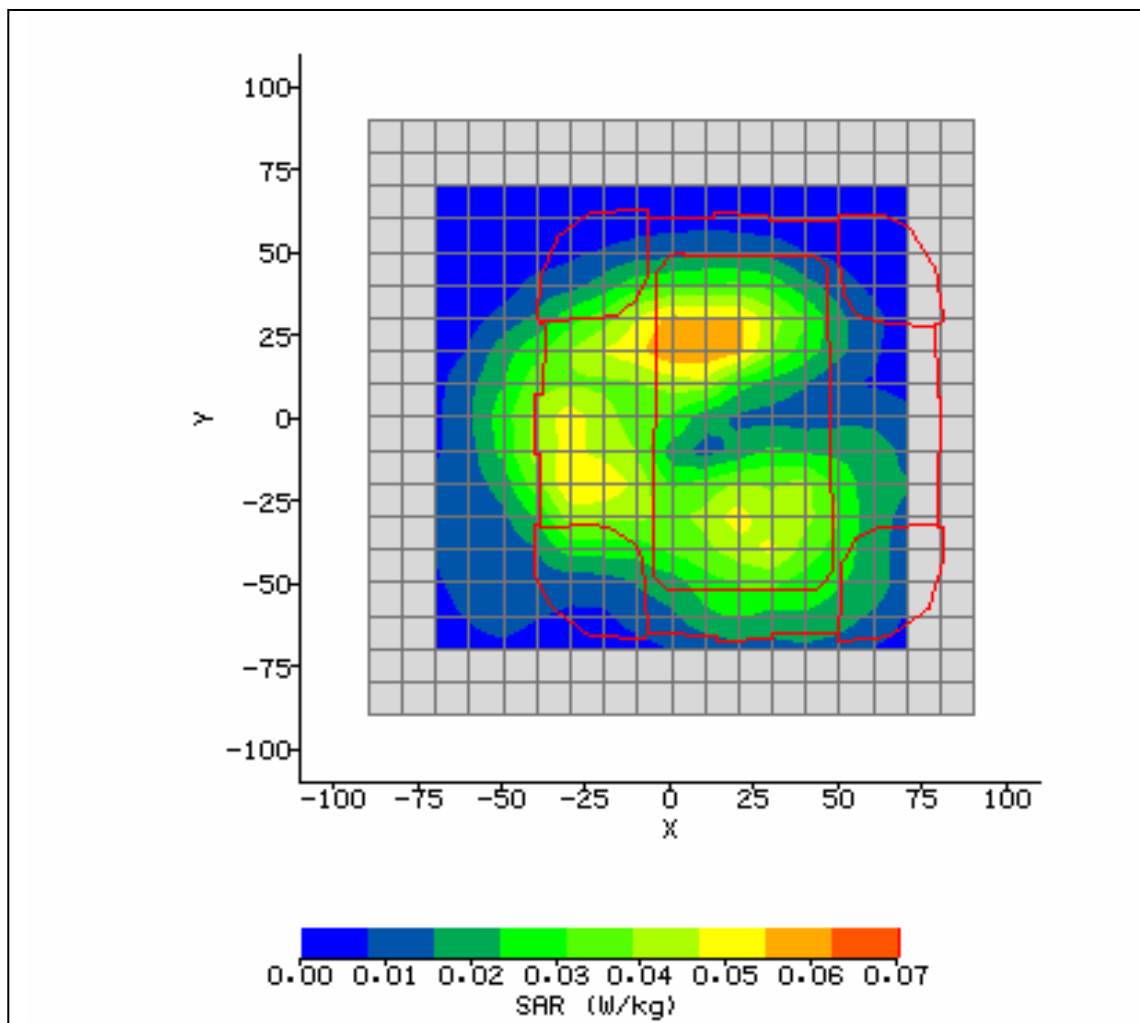


Figure 5: SAR Body Testing Results for the Arcom Cyber Tracker in Rear Facing Phantom Position; Tested at 813.5625MHz with 0mm Separation Distance to the Phantom

2.2 MAXIMUM 800 SAR TEST RESULT INCLUDING COURSE AREA SCAN – 2D

SYSTEM / SOFTWARE:	SARA2 / 2.39 VPM	INPUT POWER DRIFT:	0.0dB
DATE / TIME:	23/11/2005 23:30:35	DUT BATTERY MODEL/NO:	GRPH-AA
FILENAME:	WS200044_08.txt	PROBE SERIAL NUMBER:	170
AMBIENT TEMPERATURE:	23.0°C	LIQUID SIMULANT:	835 Body
DEVICE UNDER TEST:	Arcom Cyber Tracker	RELATIVE PERMITTIVITY:	57.01
RELATIVE HUMIDITY:	23.7%	CONDUCTIVITY:	0.981
PHANTOM S/NO:	CubePhantom.csv	LIQUID TEMPERATURE:	22.4°C
PHANTOM ROTATION:	0°	MAX SAR X-AXIS LOCATION:	-16.00 mm
DUT POSITION:	Front Facing Touch	MAX SAR Y-AXIS LOCATION:	-17.00 mm
ANTENNA CONFIGURATION:	Integral	MAX E FIELD:	12.89 V/m
TEST FREQUENCY:	806.0625MHz	SAR 1g:	0.189 W/kg
AIR FACTORS:	406 / 385 / 409	SAR 10g:	0.120 W/kg
CONVERSION FACTORS:	0.273 / 0.273 / 0.273	SAR START:	0.045 W/kg
TYPE OF MODULATION:	64QAM	SAR END:	0.045 W/kg
MODN. DUTY CYCLE:	100%	SAR DRIFT DURING SCAN:	-1.25 %
DIODE COMPRESSION FACTORS (V*200):	20 / 20 / 20	PROBE BATTERY LAST CHANGED:	21/11/05
INPUT POWER LEVEL:	Max	EXTRAPOLATION:	poly4

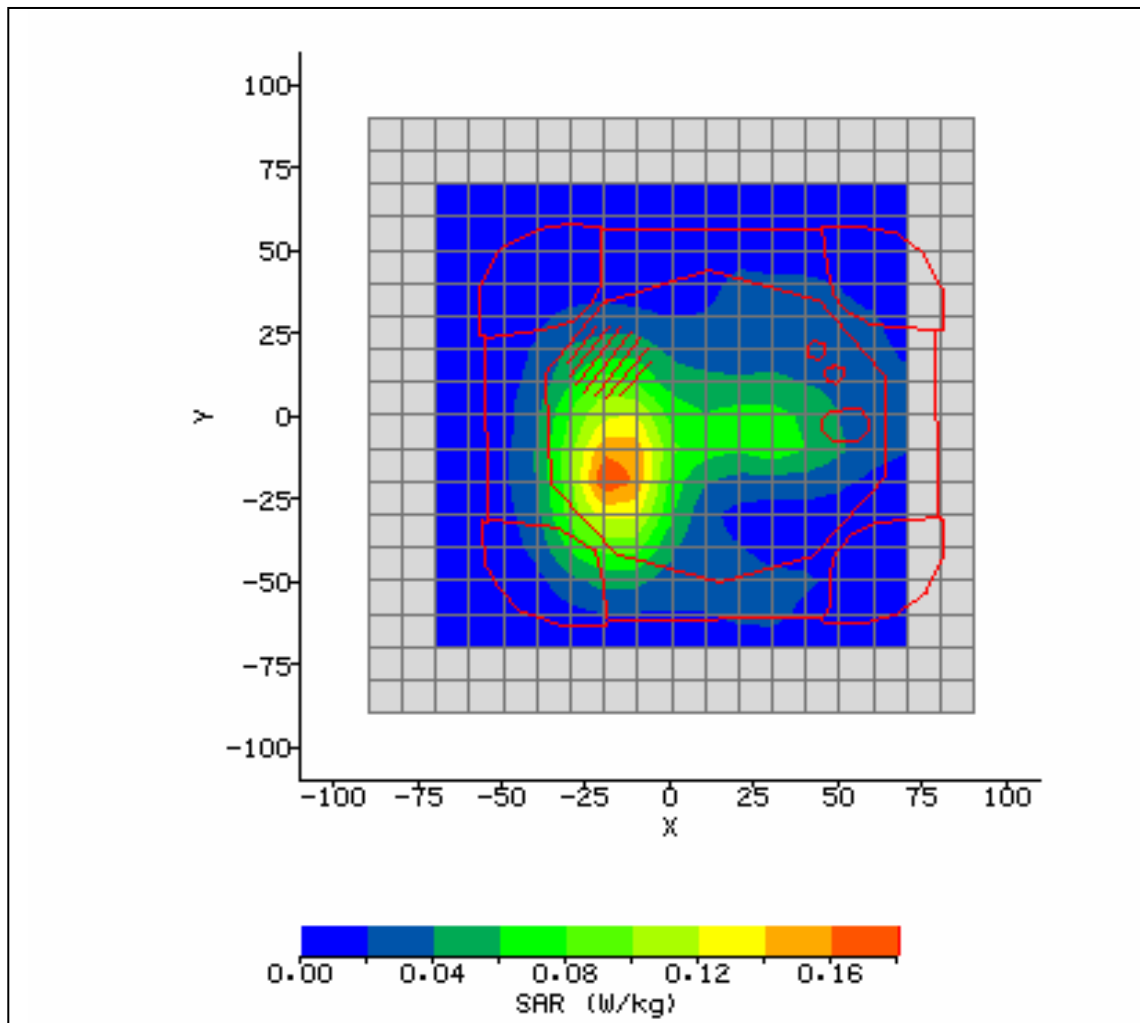


Figure 6: SAR Body Testing Results for the Arcom Cyber Tracker in Front Facing Phantom Position (Worst Case); Tested at 806.0625MHz with 0mm Separation Distance to the Phantom

2.2 MAXIMUM 800 SAR TEST RESULT INCLUDING COURSE AREA SCAN – 2D

SYSTEM / SOFTWARE:	SARA2 / 2.39 VPM	INPUT POWER DRIFT:	0.0dB
DATE / TIME:	24/11/2005 00:12:08	DUT BATTERY MODEL/NO:	GRPH-AA
FILENAME:	WS200044_09.txt	PROBE SERIAL NUMBER:	170
AMBIENT TEMPERATURE:	23.7°C	LIQUID SIMULANT:	835 Body
DEVICE UNDER TEST:	Arcom Cyber Tracker	RELATIVE PERMITTIVITY:	57.01
RELATIVE HUMIDITY:	23.4%	CONDUCTIVITY:	0.981
PHANTOM S/NO:	CubePhantom.csv	LIQUID TEMPERATURE:	22.5°C
PHANTOM ROTATION:	0°	MAX SAR X-AXIS LOCATION:	-18.00 mm
DUT POSITION:	Front Facing Touch	MAX SAR Y-AXIS LOCATION:	-19.00 mm
ANTENNA CONFIGURATION:	Integral	MAX E FIELD:	11.73 V/m
TEST FREQUENCY:	820.9875MHz	SAR 1g:	0.159 W/kg
AIR FACTORS:	406 / 385 / 409	SAR 10g:	0.101 W/kg
CONVERSION FACTORS:	0.273 / 0.273 / 0.273	SAR START:	0.038 W/kg
TYPE OF MODULATION:	64QAM	SAR END:	0.037 W/kg
MODN. DUTY CYCLE:	100%	SAR DRIFT DURING SCAN:	-1.83 %
DIODE COMPRESSION FACTORS (V*200):	20 / 20 / 20	PROBE BATTERY LAST CHANGED:	21/11/05
INPUT POWER LEVEL:	Max	EXTRAPOLATION:	poly4

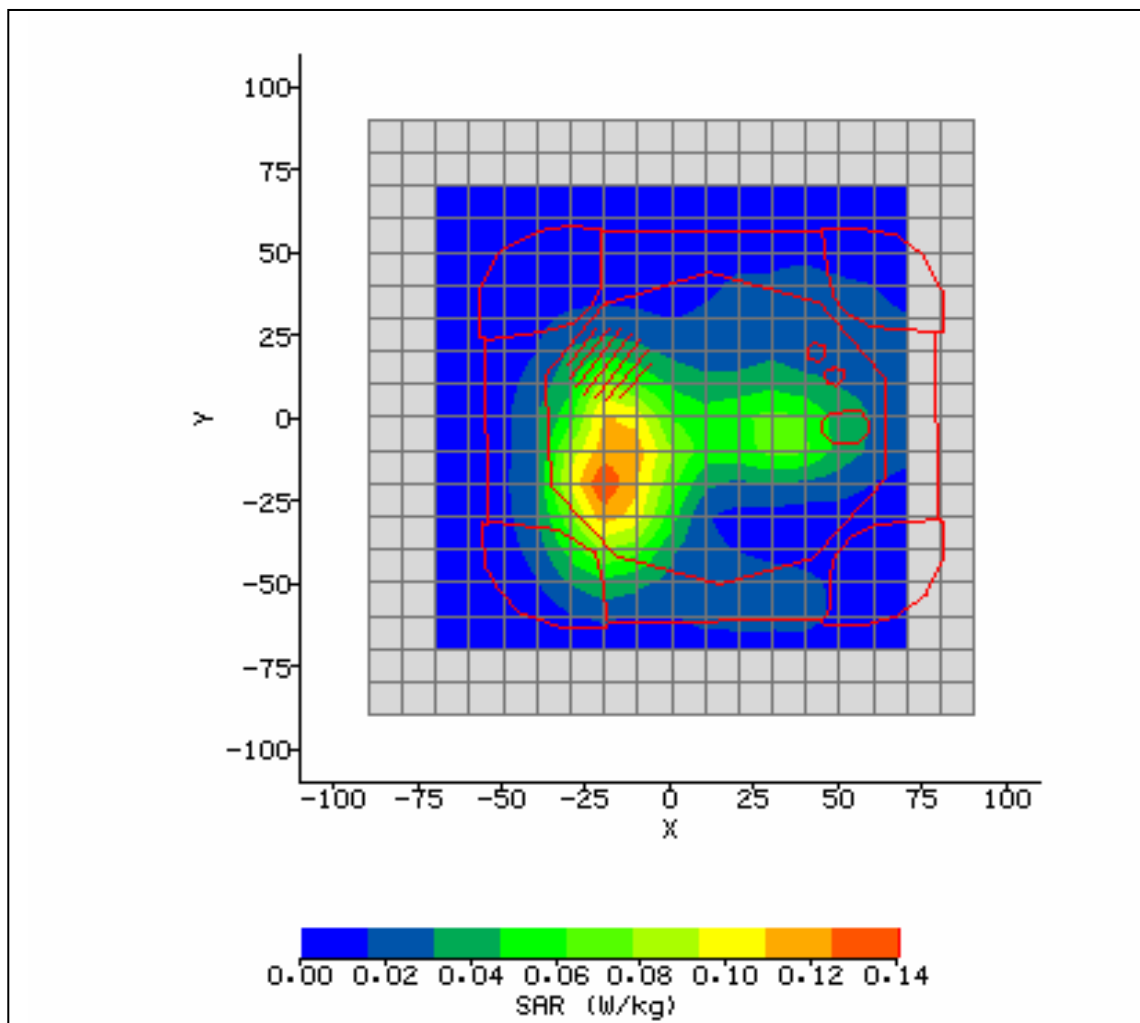


Figure 7: SAR Body Testing Results for the Arcom Cyber Tracker in Front Facing Phantom Position (Worst Case); Tested at 820.9875MHz with 0mm Separation Distance to the Phantom

2.2 MAXIMUM 800 SAR TEST RESULT INCLUDING COURSE AREA SCAN – 2D

SYSTEM / SOFTWARE:	SARA2 / 2.39 VPM	INPUT POWER DRIFT:	0.0dB
DATE / TIME:	24/11/2005 02:53:59	DUT BATTERY MODEL/NO:	GRPH-AA
FILENAME:	WS200044_10.txt	PROBE SERIAL NUMBER:	170
AMBIENT TEMPERATURE:	22.7°C	LIQUID SIMULANT:	835 Body
DEVICE UNDER TEST:	Arcom Cyber Tracker	RELATIVE PERMITTIVITY:	57.01
RELATIVE HUMIDITY:	23.5%	CONDUCTIVITY:	0.981
PHANTOM S/NO:	CubePhantom.csv	LIQUID TEMPERATURE:	22.5°C
PHANTOM ROTATION:	0°	MAX SAR X-AXIS LOCATION:	-16.00 mm
DUT POSITION:	Front Facing Touch	MAX SAR Y-AXIS LOCATION:	-16.00 mm
ANTENNA CONFIGURATION:	Integral	MAX E FIELD:	13.52 V/m
TEST FREQUENCY:	824.9875MHz	SAR 1g:	0.225 W/kg
AIR FACTORS:	406 / 385 / 409	SAR 10g:	0.125 W/kg
CONVERSION FACTORS:	0.273 / 0.273 / 0.273	SAR START:	0.044 W/kg
TYPE OF MODULATION:	64QAM	SAR END:	0.042 W/kg
MODN. DUTY CYCLE:	100%	SAR DRIFT DURING SCAN:	-4.80 %
DIODE COMPRESSION FACTORS (V*200):	20 / 20 / 20	PROBE BATTERY LAST CHANGED:	21/11/05
INPUT POWER LEVEL:	Max	EXTRAPOLATION:	poly4

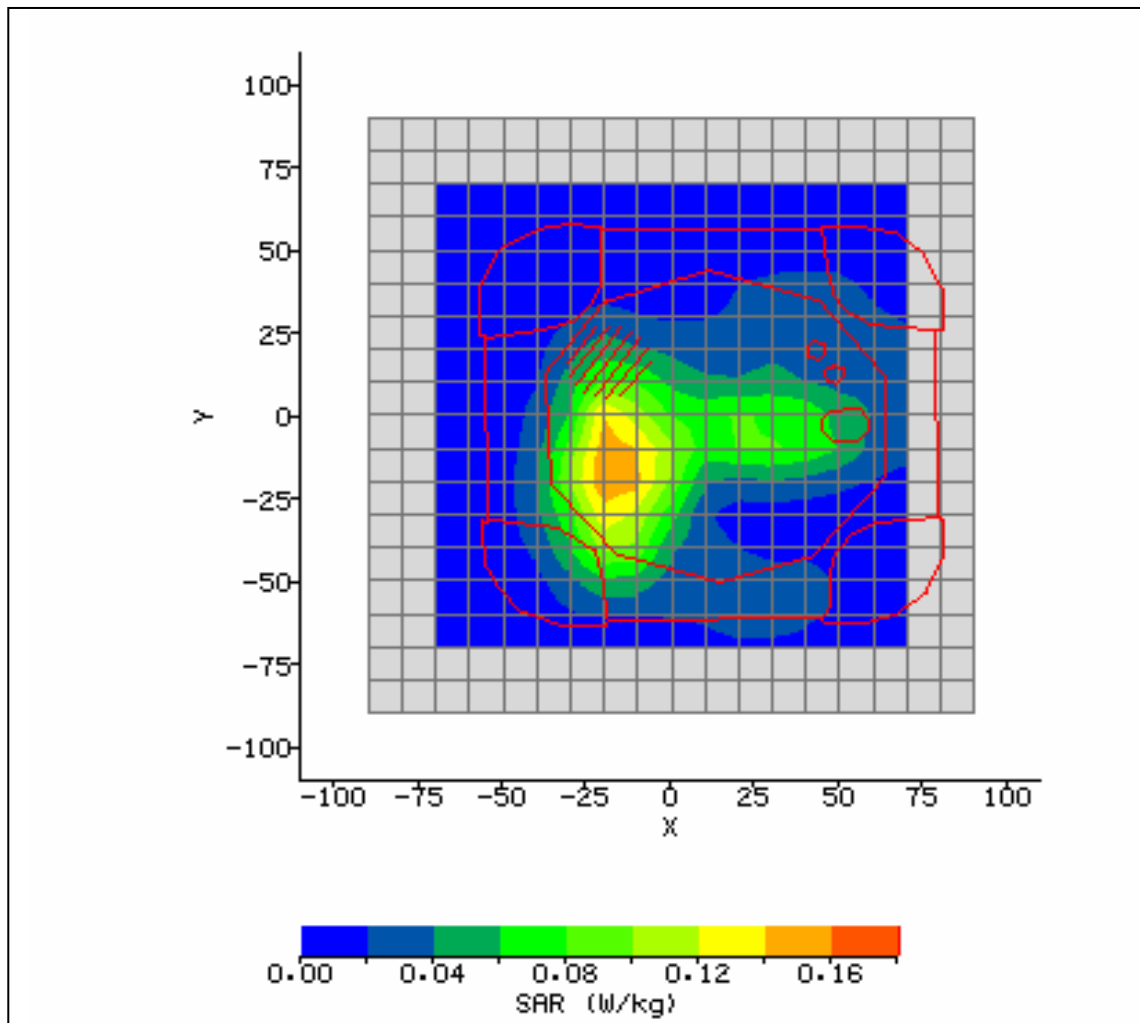


Figure 8: SAR Body Testing Results for the Arcom Cyber Tracker in Front Facing Phantom Position (Worst Case); Tested at 824.9875MHz with 0mm Separation Distance to the Phantom

2.2 MAXIMUM 900 SAR TEST RESULT INCLUDING COURSE AREA SCAN – 2D

SYSTEM / SOFTWARE:	SARA2 / 2.39 VPM	INPUT POWER DRIFT:	0.0dB
DATE / TIME:	23/11/2005 01:36:56	DUT BATTERY MODEL/NO:	GRPH-AA
FILENAME:	WS200044_01.txt	PROBE SERIAL NUMBER:	170
AMBIENT TEMPERATURE:	22.9°C	LIQUID SIMULANT:	900 Body
DEVICE UNDER TEST:	Arcom Cyber Tracker	RELATIVE PERMITTIVITY:	56.49
RELATIVE HUMIDITY:	25.6%	CONDUCTIVITY:	1.044
PHANTOM S/NO:	CubePhantom.csv	LIQUID TEMPERATURE:	22.6°C
PHANTOM ROTATION:	0°	MAX SAR X-AXIS LOCATION:	-16.00 mm
DUT POSITION:	Front Facing Touch	MAX SAR Y-AXIS LOCATION:	-12.00 mm
ANTENNA CONFIGURATION:	Integral	MAX E FIELD:	11.58 V/m
TEST FREQUENCY:	898.51875 MHz	SAR 1g:	0.171 W/kg
AIR FACTORS:	406 / 385 / 409	SAR 10g:	0.099 W/kg
CONVERSION FACTORS:	0.280 / 0.280 / 0.280	SAR START:	0.036 W/kg
TYPE OF MODULATION:	64QAM	SAR END:	0.034 W/kg
MODN. DUTY CYCLE:	100%	SAR DRIFT DURING SCAN:	-4.91 %
DIODE COMPRESSION FACTORS (V*200):	20 / 20 / 20	PROBE BATTERY LAST CHANGED:	21/11/05
INPUT POWER LEVEL:	Max	EXTRAPOLATION:	poly4

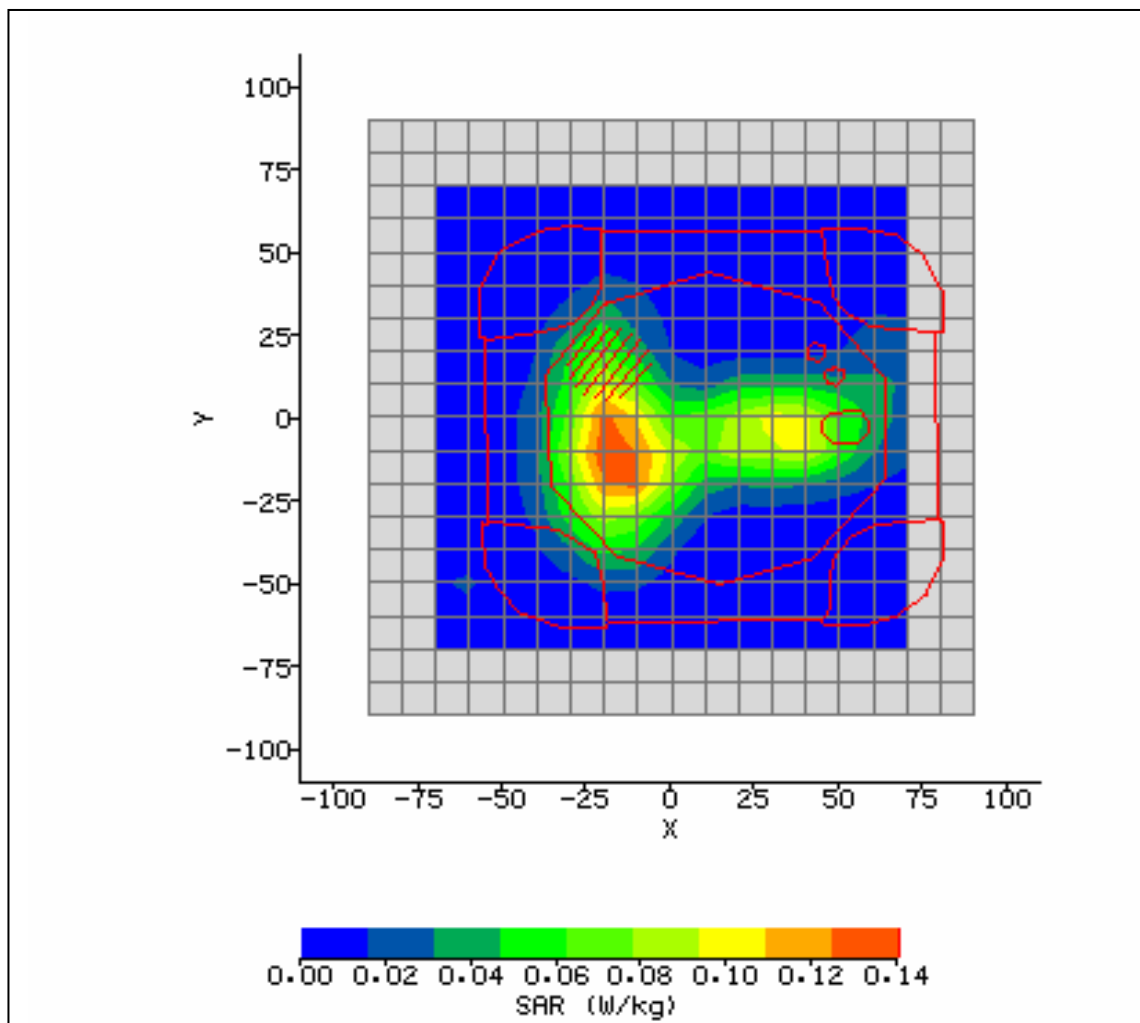


Figure 9: SAR Body Testing Results for the Arcom Cyber Tracker in Front Facing Phantom Position; Tested at 898.51875MHz with 0mm Separation Distance to the Phantom

2.2 MAXIMUM 900 SAR TEST RESULT INCLUDING COURSE AREA SCAN – 2D

SYSTEM / SOFTWARE:	SARA2 / 2.39 VPM	INPUT POWER DRIFT:	0.0dB
DATE / TIME:	23/11/2005 02:02:16	DUT BATTERY MODEL/NO:	GRPH-AA
FILENAME:	WS200044_02.txt	PROBE SERIAL NUMBER:	170
AMBIENT TEMPERATURE:	22.9°C	LIQUID SIMULANT:	900 Body
DEVICE UNDER TEST:	Arcom Cyber Tracker	RELATIVE PERMITTIVITY:	56.49
RELATIVE HUMIDITY:	25.3%	CONDUCTIVITY:	1.044
PHANTOM S/NO:	CubePhantom.csv	LIQUID TEMPERATURE:	22.6°C
PHANTOM ROTATION:	0°	MAX SAR X-AXIS LOCATION:	-6.00 mm
DUT POSITION:	Rear Facing Touch	MAX SAR Y-AXIS LOCATION:	-2.00 mm
ANTENNA CONFIGURATION:	Integral	MAX E FIELD:	6.50 V/m
TEST FREQUENCY:	898.51875MHz	SAR 1g:	0.048 W/kg
AIR FACTORS:	406 / 385 / 409	SAR 10g:	0.032 W/kg
CONVERSION FACTORS:	0.280 / 0.280 / 0.280	SAR START:	0.016 W/kg
TYPE OF MODULATION:	64QAM	SAR END:	0.017 W/kg
MODN. DUTY CYCLE:	100%	SAR DRIFT DURING SCAN:	7.21 %
DIODE COMPRESSION FACTORS (V*200):	20 / 20 / 20	PROBE BATTERY LAST CHANGED:	21/11/05
INPUT POWER LEVEL:	Max	EXTRAPOLATION:	poly4

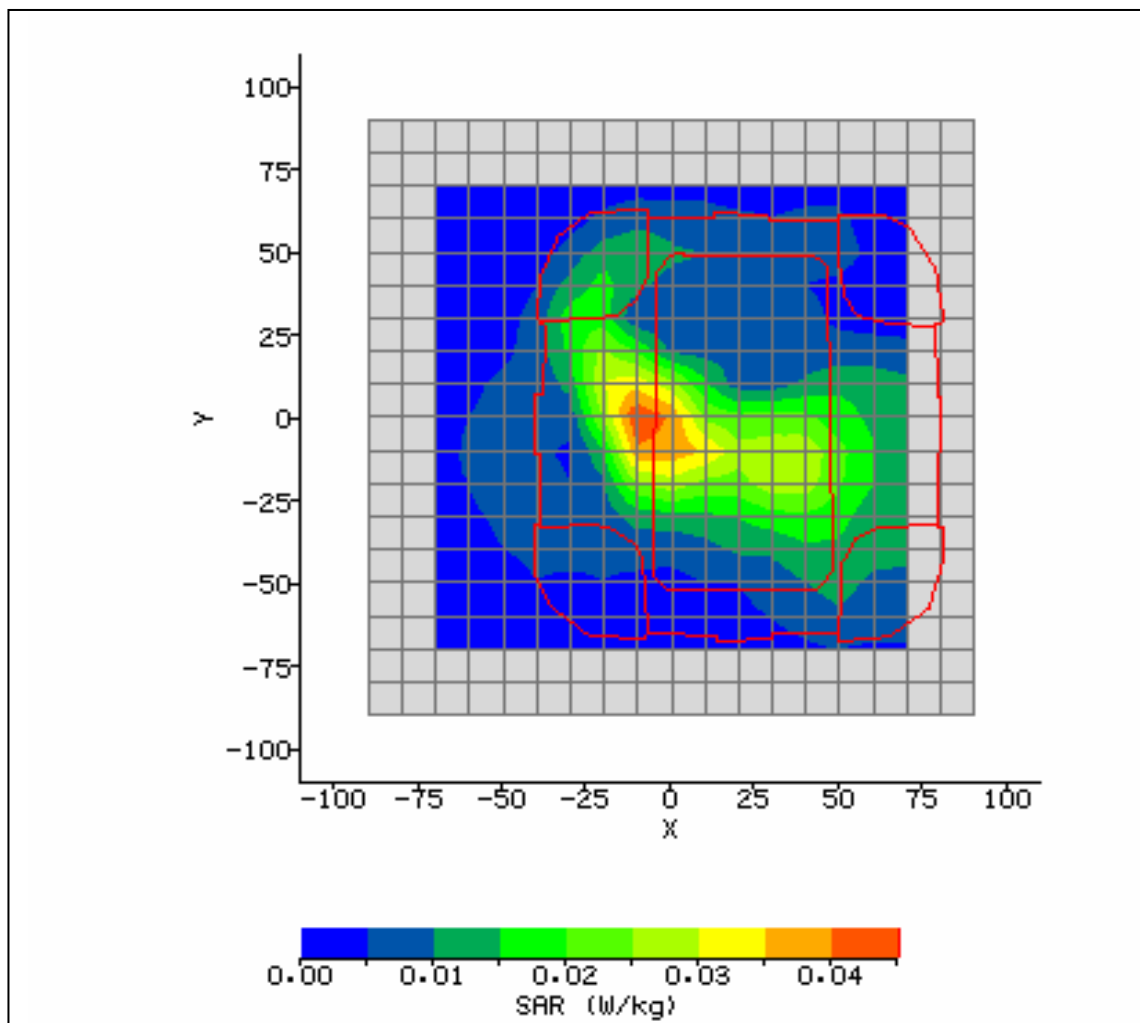


Figure 10: SAR Body Testing Results for the Arcom Cyber Tracker in Rear Facing Phantom Position; Tested at 898.51875MHz with 0mm Separation Distance to the Phantom

2.2 MAXIMUM 900 SAR TEST RESULT INCLUDING COURSE AREA SCAN – 2D

SYSTEM / SOFTWARE:	SARA2 / 2.39 VPM	INPUT POWER DRIFT:	0.0dB
DATE / TIME:	23/11/2005 02:32:02	DUT BATTERY MODEL/NO:	GRPH-AA
FILENAME:	WS200044_03.txt	PROBE SERIAL NUMBER:	170
AMBIENT TEMPERATURE:	22.8°C	LIQUID SIMULANT:	900 Body
DEVICE UNDER TEST:	Arcom Cyber Tracker	RELATIVE PERMITTIVITY:	56.49
RELATIVE HUMIDITY:	25.0%	CONDUCTIVITY:	1.044
PHANTOM S/NO:	CubePhantom.csv	LIQUID TEMPERATURE:	22.5°C
PHANTOM ROTATION:	0°	MAX SAR X-AXIS LOCATION:	-15.00 mm
DUT POSITION:	Front Facing Touch	MAX SAR Y-AXIS LOCATION:	-15.00 mm
ANTENNA CONFIGURATION:	Integral	MAX E FIELD:	11.60 V/m
TEST FREQUENCY:	896.01875MHz	SAR 1g:	0.170 W/kg
AIR FACTORS:	406 / 385 / 409	SAR 10g:	0.092 W/kg
CONVERSION FACTORS:	0.280 / 0.280 / 0.280	SAR START:	0.032 W/kg
TYPE OF MODULATION:	64QAM	SAR END:	0.031 W/kg
MODN. DUTY CYCLE:	100%	SAR DRIFT DURING SCAN:	-1.66 %
DIODE COMPRESSION FACTORS (V*200):	20 / 20 / 20	PROBE BATTERY LAST CHANGED:	21/11/05
INPUT POWER LEVEL:	Max	EXTRAPOLATION:	poly4

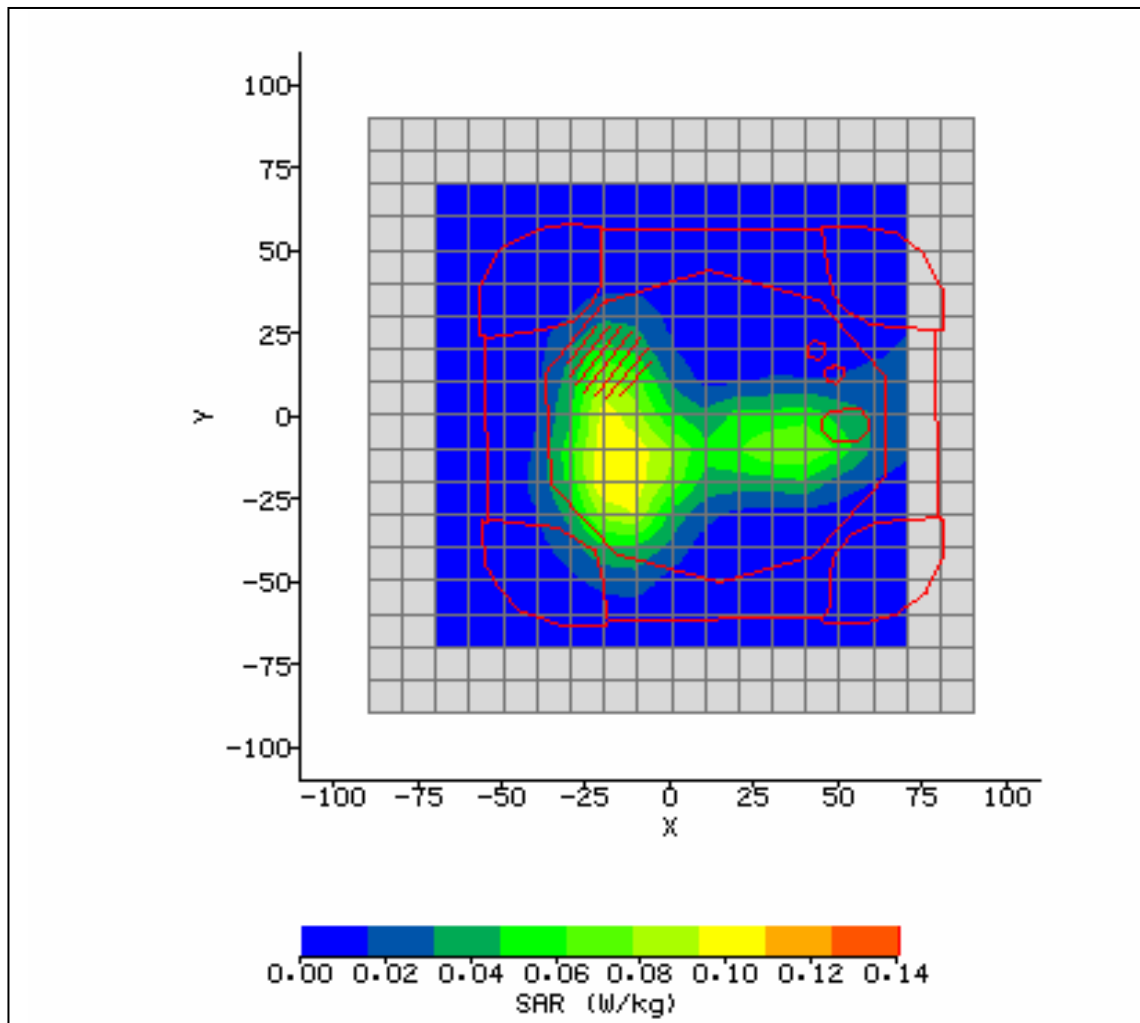


Figure 11: SAR Body Testing Results for the Arcom Cyber Tracker in Front Facing Phantom Position (Worst Case); Tested at 896.01875MHz with 0mm Separation Distance to the Phantom

2.2 MAXIMUM 900 SAR TEST RESULT INCLUDING COURSE AREA SCAN – 2D

SYSTEM / SOFTWARE:	SARA2 / 2.39 VPM	INPUT POWER DRIFT:	0.0dB
DATE / TIME:	23/11/2005 02:57:24	DUT BATTERY MODEL/NO:	GRPH-AA
FILENAME:	WS200044_04.txt	PROBE SERIAL NUMBER:	170
AMBIENT TEMPERATURE:	23.6°C	LIQUID SIMULANT:	900 Body
DEVICE UNDER TEST:	Arcom Cyber Tracker	RELATIVE PERMITTIVITY:	56.49
RELATIVE HUMIDITY:	24.2%	CONDUCTIVITY:	1.044
PHANTOM S/NO:	CubePhantom.csv	LIQUID TEMPERATURE:	22.4°C
PHANTOM ROTATION:	0°	MAX SAR X-AXIS LOCATION:	-14.00 mm
DUT POSITION:	Front Facing Touch	MAX SAR Y-AXIS LOCATION:	-14.00 mm
ANTENNA CONFIGURATION:	Integral	MAX E FIELD:	11.60 V/m
TEST FREQUENCY:	900.98125MHz	SAR 1g:	0.165 W/kg
AIR FACTORS:	406 / 385 / 409	SAR 10g:	0.093 W/kg
CONVERSION FACTORS:	0.280 / 0.280 / 0.280	SAR START:	0.033 W/kg
TYPE OF MODULATION:	64QAM	SAR END:	0.032 W/kg
MODN. DUTY CYCLE:	100%	SAR DRIFT DURING SCAN:	-2.53 %
DIODE COMPRESSION FACTORS (V*200):	20 / 20 / 20	PROBE BATTERY LAST CHANGED:	21/11/05
INPUT POWER LEVEL:	Max	EXTRAPOLATION:	poly4

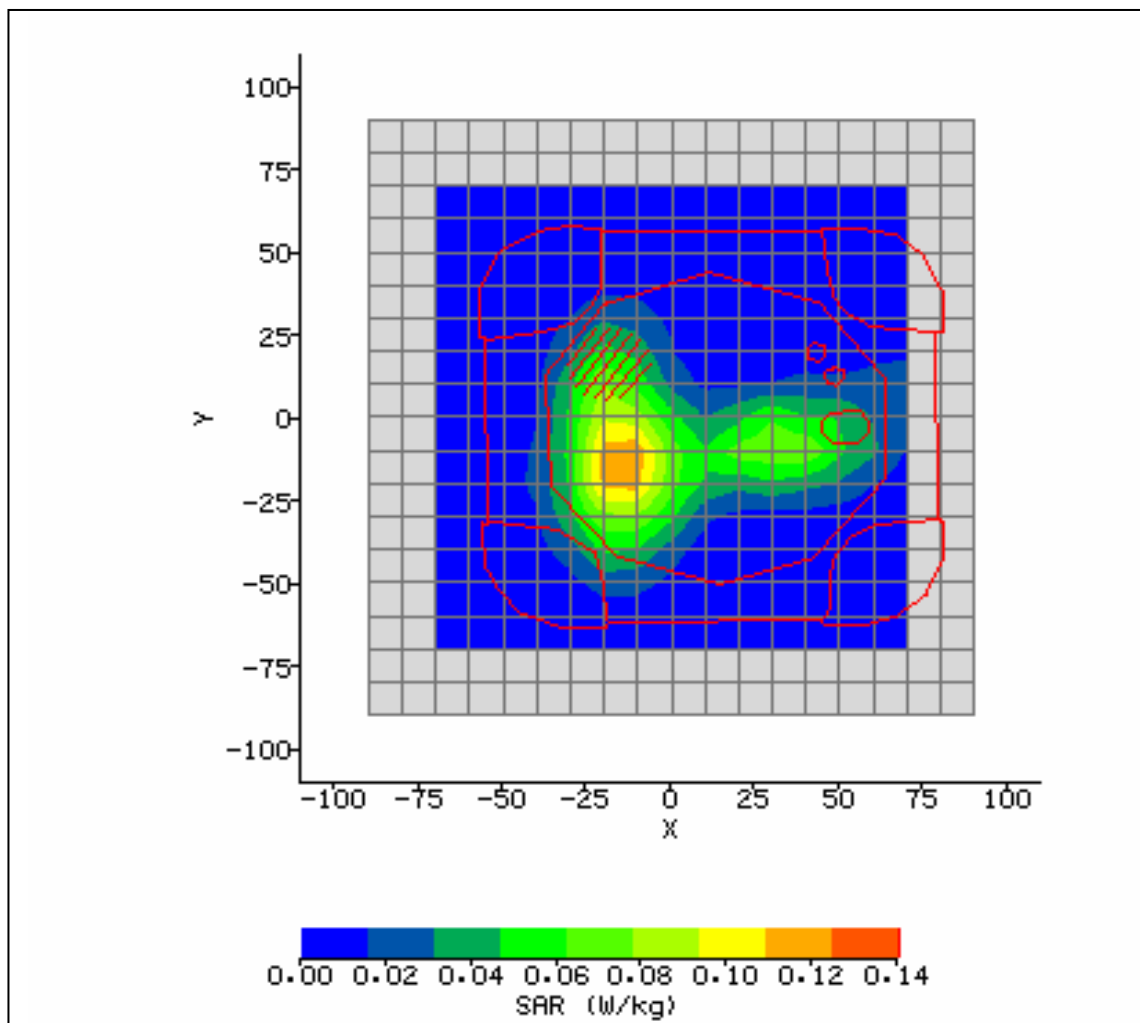


Figure 12: SAR Body Testing Results for the Arcom Cyber Tracker in Front Facing Phantom Position (Worst Case); Tested at 900.98125MHz with 0mm Separation Distance to the Phantom

2.2 MAXIMUM 900 SAR TEST RESULT INCLUDING COURSE AREA SCAN – 2D

SYSTEM / SOFTWARE:	SARA2 / 2.39 VPM	INPUT POWER DRIFT:	0.0dB
DATE / TIME:	23/11/2005 03:23:30	DUT BATTERY MODEL/NO:	GRPH-AA
FILENAME:	WS200044_05.txt	PROBE SERIAL NUMBER:	170
AMBIENT TEMPERATURE:	23.5°C	LIQUID SIMULANT:	900 Body
DEVICE UNDER TEST:	Arcom Cyber Tracker	RELATIVE PERMITTIVITY:	56.49
RELATIVE HUMIDITY:	26.8%	CONDUCTIVITY:	1.044
PHANTOM S/NO:	CubePhantom.csv	LIQUID TEMPERATURE:	22.4°C
PHANTOM ROTATION:	0°	MAX SAR X-AXIS LOCATION:	-16.00 mm
DUT POSITION:	Front Facing Touch	MAX SAR Y-AXIS LOCATION:	-12.00 mm
ANTENNA CONFIGURATION:	Integral	MAX E FIELD:	11.14 V/m
TEST FREQUENCY:	901.98125MHz	SAR 1g:	0.154 W/kg
AIR FACTORS:	406 / 385 / 409	SAR 10g:	0.089 W/kg
CONVERSION FACTORS:	0.280 / 0.280 / 0.280	SAR START:	0.033 W/kg
TYPE OF MODULATION:	64QAM	SAR END:	0.034 W/kg
MODN. DUTY CYCLE:	100%	SAR DRIFT DURING SCAN:	3.86 %
DIODE COMPRESSION FACTORS (V*200):	20 / 20 / 20	PROBE BATTERY LAST CHANGED:	21/11/05
INPUT POWER LEVEL:	Max	EXTRAPOLATION:	poly4

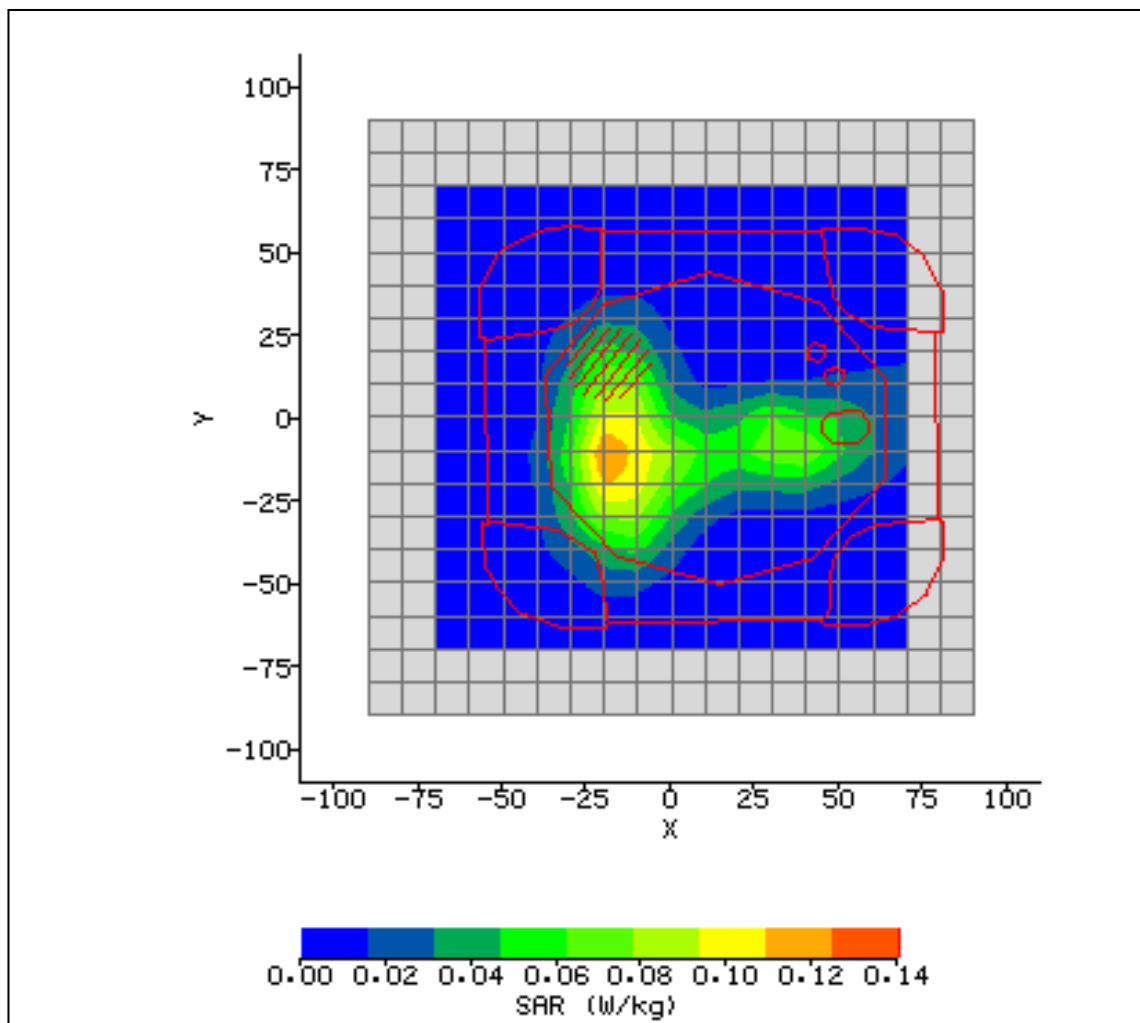


Figure 13: SAR Body Testing Results for the Arcom Cyber Tracker in Front Facing Phantom Position (Worst Case); Tested at 901.98125MHz with 0mm Separation Distance to the Phantom

SECTION 3

TEST EQUIPMENT

3.1 TEST EQUIPMENT

The following test equipment was used at BABT:

INSTRUMENT DESCRIPTION	MANUFACTURER	MODEL TYPE	TEST EQUIPMENT NO.	CALIBRATION DATES	
Bench-top Robot	Mitsubishi	RV-E2	156	N/A	N/A
Fast Probe Amplifier	IndexSAR Ltd.	IFA-010	1557	N/A	N/A
Side Bench 2	IndexSAR Ltd.	IXM-030	1571	N/A	N/A
Upright Bench 1	IndexSAR Ltd.	SARA2 system	1568	N/A	N/A
SAR Probe	IndexSAR Ltd.	IXP-050	1555	15/1/2005	15/1/2006
Signal Generator	Hewlett Packard	E4422A	61	15/2/2005	15/2/2006
Power Meter	Rohde & Schwarz	NRV	52	2/6/2005	2/6/2006
Power Sensor	Rohde & Schwarz	NRV-Z1	60	3/6/2005	3/6/2006
Power Sensor	Rohde & Schwarz	NRV-Z1	178	3/6/2005	3/6/2006
Spectrum Analyzer	Hewlett Packard	8566A	108	25/1/2005	25/1/2006
RF Pre-Amplifier	IndexSAR Ltd.	0.8-3G	5093	11/5/2005	11/5/2006
Bi-Directional Coupler	Krytar	1850	58	N/A	N/A
20dB Attenuator	Narda	766F-10	483	31/5/2005	31/5/2006
Hygrometer	Rotronic	I-1000	2783	1/6/2005	1/6/2006
Digital Thermometer	Digitron	T208	64	18/10/2005	18/10/2006
Thermocouple	Rohde & Schwarz	K	65	18/10/2005	18/10/2006
835/900MHz Body TEM	BABT	Batch 3	N/A	18/11/2005	2/12/2005
900MHz Dipole	IndexSAR Ltd.	IEEE1528	N/A	22/11/2005	23/11/2005
Flat Phantom 2mm Side	IndexSAR Ltd.	HeadBox01	1563	N/A	N/A
200mm Cube Box Phantom	IndexSAR Ltd.	IXB-070	1565	N/A	N/A
Dipole Positioner - Plastic	IndexSAR Ltd.	IXH-020	1584	N/A	N/A
Dipole Positioner - Foam	IndexSAR Ltd.	IXH-010	1586	N/A	N/A
Scissor Jack Base	IndexSAR Ltd.	IXB-030	1576	N/A	N/A
100mm Device Support	IndexSAR Ltd.	IXB-031	1572	N/A	N/A
200mm Device Support	IndexSAR Ltd.	IXB-032	1574	N/A	N/A

3.2 TEST SOFTWARE

The following software was used to control the BABT SARA2 System:

INSTRUMENT	VERSION NO.	DATE
SARA2 system	v.2.3.9 VPM	09/09/2005
Mitsubishi robot controller firmware revision	RV-E2 Version C9a	-
IFA-10 Probe amplifier	Version 2.5	-

3.3 DIELECTRIC PROPERTIES OF SIMULANT LIQUIDS

The fluid properties of the simulant fluids used during routine SAR evaluation meet the dielectric properties required by EN50361:2001 & OET Bulletin 65 (Edition 97-01).

The fluids were calibrated in our Laboratory and re-checked prior to any measurements being made against reference fluids stated in IEEE 1528-2003 of 0.9% NaCl (Salt Solution) at 23°C and also for Dimethylsulphoxide (DMS) at 21°C.

The fluids were made at BABT under controlled conditions from the following OET(65)c formulae and IEEE1528-2003. The composition of ingredients may have been modified accordingly to achieve the desired target tissue parameters required for routine SAR evaluation:

OET 65(c) Recipes

Ingredients (% by weight)	Frequency (MHz)									
	450		835		915		1900		2450	
Tissue Type	Head	Body	Head	Body	Head	Body	Head	Body	Head	Body
Water	38.56	51.16	41.45	52.4	41.05	56.0	54.9	40.4	62.7	73.2
Salt (NaCl)	3.95	1.49	1.45	1.4	1.35	0.76	0.18	0.5	0.5	0.04
Sugar	56.32	46.78	56.0	45.0	56.5	41.76	0.0	58.0	0.0	0.0
HEC	0.98	0.52	1.0	1.0	1.0	1.21	0.0	1.0	0.0	0.0
Bactericide	0.19	0.05	0.1	0.1	0.1	0.27	0.0	0.1	0.0	0.0
Triton X-100	0.0	0.0	0.0	0.0	0.0	0.0	0.0	0.0	36.8	0.0
DGBE	0.0	0.0	0.0	0.0	0.0	0.0	44.92	0.0	0.0	26.7
Dielectric Constant	43.42	58.0	42.54	56.1	42.0	56.8	39.9	54.0	39.8	52.5
Conductivity (S/m)	0.85	0.83	0.91	0.95	1.0	1.07	1.42	1.45	1.88	1.78

IEEE 1528 Recipes

Frequency (MHz)	300	450		835	900			1450	1800					1900		1950	2000	2100			2450			3000
Recipe #	1	1	3	1	1	2	3	1	1	2	2	3	1	2	4	1	1	2	2	3	1			
Ingredients (% by weight)																								
I,2-Propanediol						64.81																		
Bactericide	0.19	0.19	0.5	0.1	0.1		0.5					0.5									0.5			
Diacetin			48.9				49.2					49.43									49.75			
DGBE								45.41	47	13.84	44.92		44.92	13.84	45	50	50	7.99	7.99			7.99		
HEC	0.98	0.98		1	1																			
NaCl	5.95	3.95	1.7	1.45	1.48	0.79	1.1	0.67	0.36	0.35	0.18	0.64	0.18	0.35					0.16	0.16		0.16		
Sucrose	55.32	56.32		57	56.5																			
Triton X-100										30.45				30.45					19.97	19.97		19.97		
Water	37.56	38.56	48.9	40.45	40.92	34.4	49.2	53.82	52.64	55.36	54.9	49.43	54.9	55.36	55	50	50	71.88	71.88	49.75		71.88		
Measured dielectric parameters																								
ϵ'	46	43.4	44.3	41.6	41.2	41.8	42.7	40.9	39.3	41	40.4	39.2	39.9	41	40.1	37	36.8	41.1	40.3	39.2		37.9		
σ (S/m)	0.86	0.85	0.9	0.9	0.98	0.97	0.99	1.21	1.39	1.38	1.4	1.4	1.42	1.38	1.41	1.4	1.51	1.55	1.88	1.82		2.46		
Temp. (°C)	22	22	20	22	22	22	20	22	22	21	22	20	21	21	20	22	22	20	20	20		20		
Target dielectric parameters (Table 5-1)																								
ϵ'_t	45.3	43.5		41.5	41.5			40.5	40										39.8		39.2		38.5	
σ (S/m)	0.87	0.87		0.9	0.97			1.2	1.4										1.49		1.8		2.4	

3.3 DIELECTRIC PROPERTIES OF SIMULANT LIQUIDS

The dielectric properties of the tissue simulant liquids used for the SAR testing at BABT are as follows:-

FLUID TYPE AND FREQUENCY	RELATIVE PERMITTIVITY ϵ_r (ϵ') TARGET	RELATIVE PERMITTIVITY ϵ_r (ϵ') MEASURED	CONDUCTIVITY σ TARGET	CONDUCTIVITY σ MEASURED
Body 835MHz	55.0	57.006	0.97	0.981
Body 900MHz	55.0	56.493	1.05	1.044

3.4 TEST CONDITIONS

TEST LABORATORY CONDITIONS

Ambient Temperature: Within +15°C to +35°C at 20% RH to 75% RH.
The actual Temperature during the testing ranged from 22.7°C to 23.7°C.
The actual Humidity during the testing ranged from 23.4% to 26.8% RH.

TEST FLUID TEMPERATURE RANGE

FREQUENCY	835 MHz	900 MHz
BODY / HEAD FLUID	BODY	BODY
MIN TEMPERATURE °C	22.4	22.4
MAX TEMPERATURE °C	22.5	22.6

SAR DRIFT

The SAR Drift was within acceptable limits during scans. The maximum SAR Drift, drift due to the handset electronics, was recorded as 7.21% (0.300dB) for all of the testing. The value 7.21% has been included in the measurement uncertainty budget.

3.5 MEASUREMENT UNCERTAINTY

ERROR SOURCES	EN 50361 Description (Subclause)	Uncertainty (%)	Probability Distribution	Divisor	ci	ci^2	Standard Uncertainty (%)	Stand Uncert^2	(Stand Uncert^2) X (ci^2)
Measurement Equipment									
Calibration	7.2.1.1	10	Normal	2.00	1	1	5.00	25.00	25.00
Isotropy	7.2.1.2	10.6	Rectangular	1.73	1	1	6.12	37.45	37.45
Linearity	7.2.1.3	2.92	Rectangular	1.73	1	1	1.69	2.84	2.84
Probe Stability	-	2.46	Rectangular	1.73	1	1	1.42	2.02	2.02
Detection limits	7.2.1.4	0	Rectangular	1.73	1	1	0.00	0.00	0.00
Boundary effect	7.2.1.5	1.7	Rectangular	1.73	1	1	0.98	0.96	0.96
Measurement device	7.2.1.6	0	Normal	1.00	1	1	0.00	0.00	0.00
Response time	7.2.1.7	0	Normal	1.00	1	1	0.00	0.00	0.00
Noise	7.2.1.8	0	Normal	1.00	1	1	0.00	0.00	0.00
Integration time	7.2.1.9	2.3	Normal	1.00	1	1	2.30	5.29	5.29
Mechanical constraints									
Scanning system	7.2.2.1	0.57	Rectangular	1.73	1	1	0.33	0.11	0.11
Phantom shell	7.2.2.2	1.43	Rectangular	1.73	1	1	0.83	0.68	0.68
Matching between probe and phantom	7.2.2.3	2.86	Rectangular	1.73	1	1	1.65	2.73	2.73
Positioning of the phone 'Y' Co-ordinate	7.2.2.4	1.5	Normal	1.00	1	1	1.50	2.25	2.25
Positioning of the phone 'Z' Co-ordinate	7.2.2.4	1.73	Normal	1.00	1	1	1.73	2.99	2.99
Physical Parameters									
Liquid conductivity (deviation from target)	7.2.3.2	5	Rectangular	1.73	0.5	0.25	2.89	8.33	2.08
Liquid conductivity (measurement error)	7.2.3.2	15.3	Rectangular	1.73	0.5	0.25	8.83	78.03	19.51
Liquid permittivity (deviation from target)	7.2.3.3	5	Rectangular	1.73	0.5	0.25	2.89	8.33	2.08
Liquid permittivity (measurement error)	7.2.3.3	5	Rectangular	1.73	0.5	0.25	2.89	8.33	2.08
Drifts in output power of the phone, probe, temperature and humidity	7.2.3.4	7.21	Rectangular	1.73	1	1	4.16	17.33	17.33
Perturbation by the environment	7.2.3.5	3	Rectangular	1.73	1	1	1.73	3.00	3.00
Post-Processing									
SAR interpolation and extrapolation	7.2.4.1	2.4	Rectangular	1.73	1	1	1.39	1.92	1.92
Maximum SAR evaluation	7.2.4.2	2.4	Rectangular	1.73	1	1	1.39	1.92	1.92
Combined standard uncertainty	11.50						Total	132.25	
Expanded uncertainty = 23.00 % (Using a Coverage Factor of K=2) (confidence interval of 95 %)									

SECTION 4

PHOTOGRAPHS

4.1 TEST POSITIONAL PHOTOGRAPHS

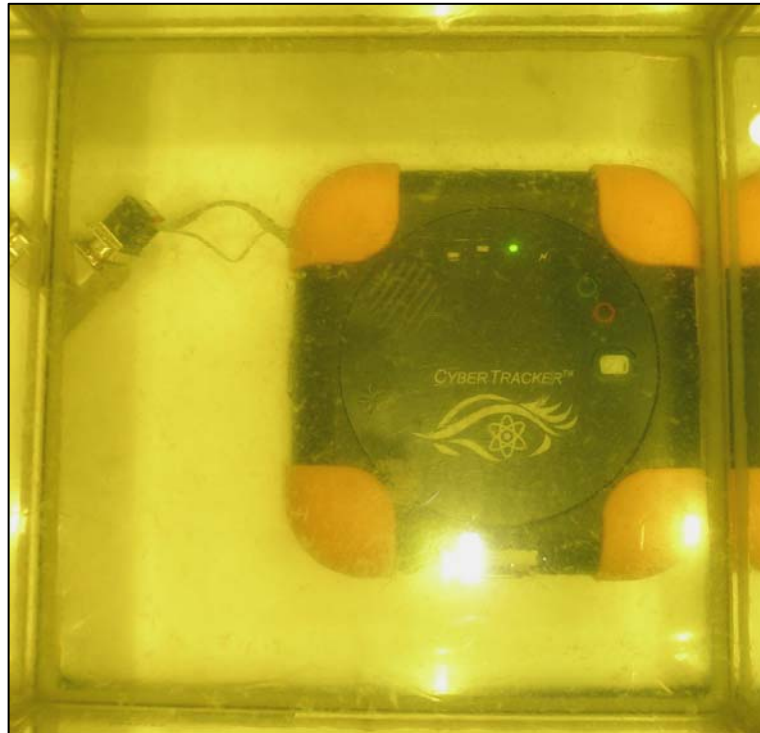


Figure 14: Positional Photograph of the Arcom Cyber Tracker Device in Front Facing Phantom Position (Top View)



Figure 15: Positional Photograph of the Arcom Cyber Tracker Device in Front Facing Phantom Position (Side View)

4.1 TEST POSITIONAL PHOTOGRAPHS

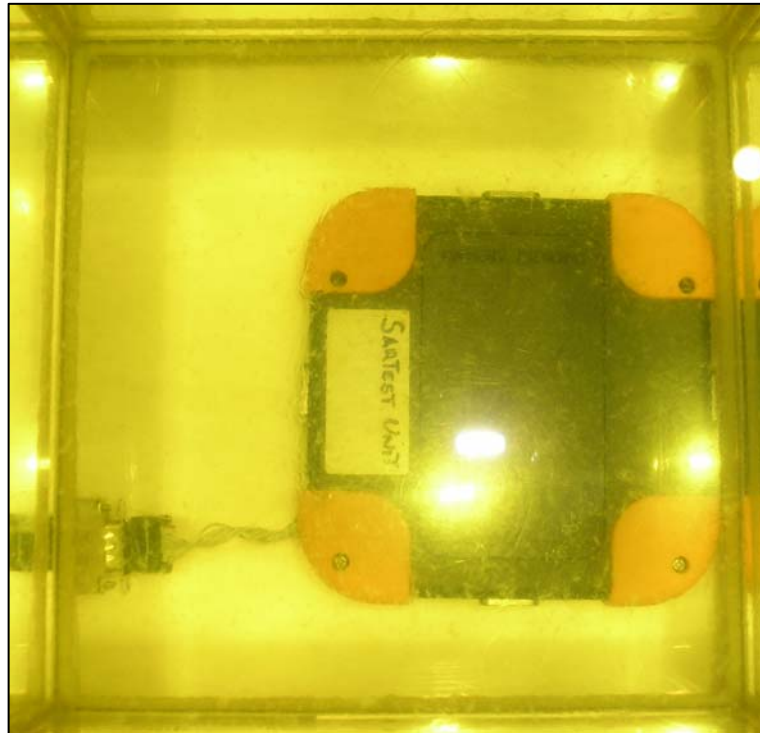


Figure 16: Positional Photograph of the Arcom Cyber Tracker Device in Rear Facing Phantom Position (Top View)



Figure 17: Positional Photograph of the Arcom Cyber Tracker Device in Rear Facing Phantom Position (Side View)

4.2 PHOTOGRAPHS OF EQUIPMENT UNDER TEST (EUT)



Figure 18: Front View

4.2 PHOTOGRAPHS OF EQUIPMENT UNDER TEST (EUT)

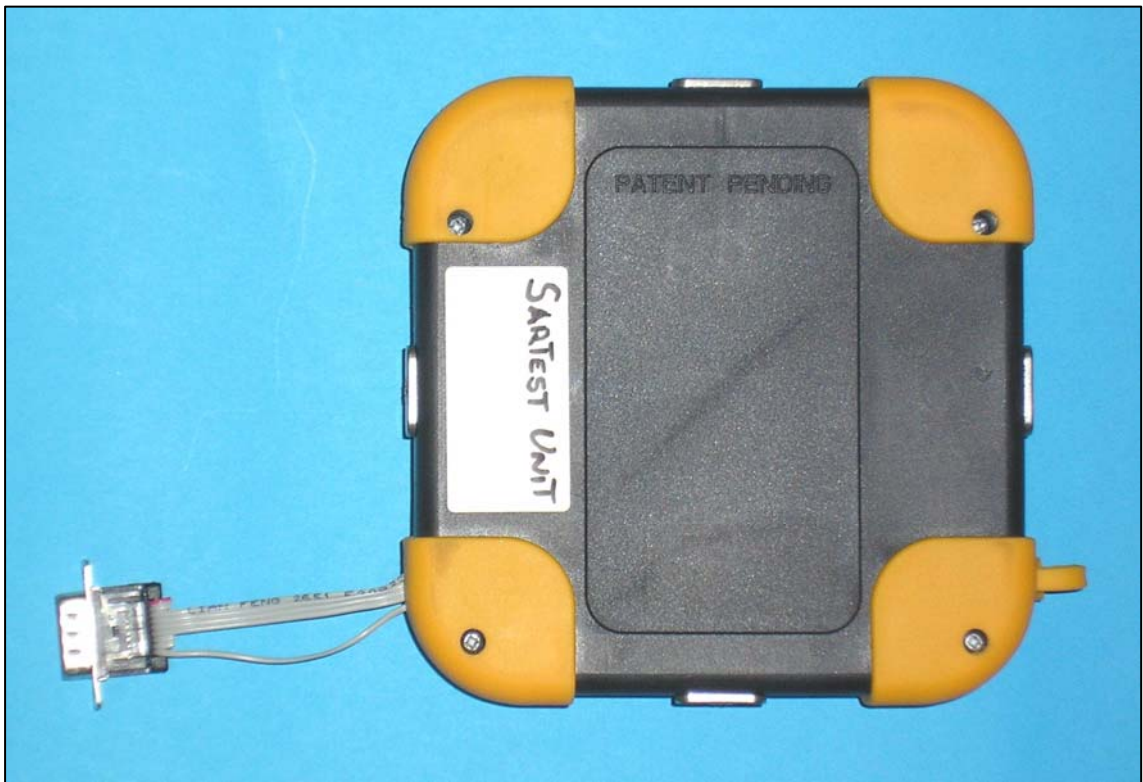


Figure 19: Rear View

SECTION 5

DISCLAIMERS AND COPYRIGHT

5.1 DISCLAIMERS AND COPYRIGHT

This report must not be reproduced, except in its entirety, without the written permission of
TUV Product Service Limited

© 2005 TUV Product Service Limited

ANNEX A

PROBE CALIBRATION INFORMATION



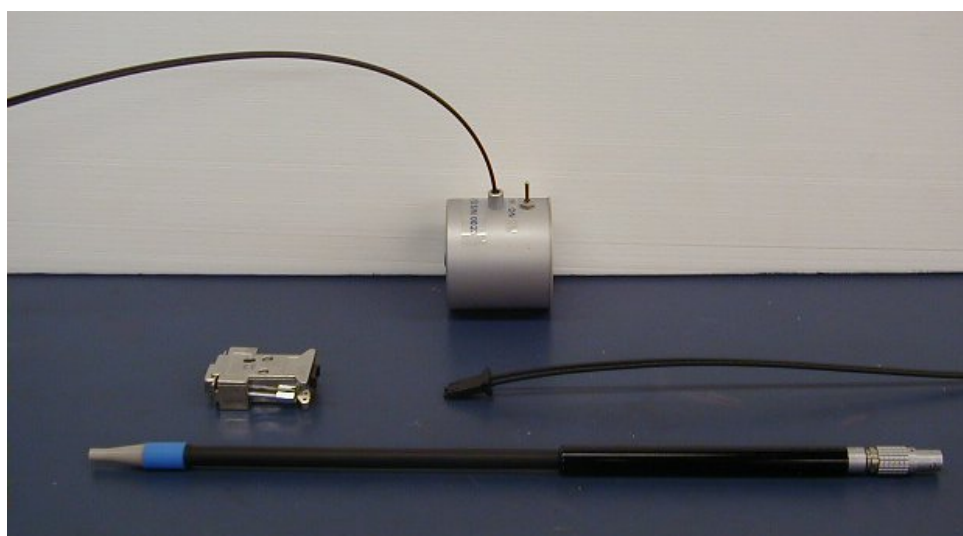
IMMERSIBLE SAR PROBE

CALIBRATION REPORT

Part Number: IXP – 050

S/N 0170

January 2005



Indexsar Limited
Oakfield House
Cudworth Lane
Newdigate
Surrey RH5 5BG
Tel: +44 (0) 1306 632 870
Fax: +44 (0) 1306 631 834
e-mail: enquiries@indexsar.com

INTRODUCTION

This Report presents measured calibration data for a particular Indexsar SAR probe (S/N 0170) and describes the procedures used for characterisation and calibration.

Indexsar probes are characterised using procedures that, where applicable, follow the recommendations of CENELEC [1] and IEEE [2] standards. The procedures incorporate techniques for probe linearisation, isotropy assessment and determination of liquid factors (conversion factors). Calibrations are determined by comparing probe readings with analytical computations in canonical test geometries (waveguides) using normalised power inputs.

Each step of the calibration procedure and the equipment used is described in the sections below.

CALIBRATION PROCEDURE

1. Objectives

The calibration process comprises three stages

- 1) Determination of the channel sensitivity factors which optimise the probe's overall rotational isotropy in 1800MHz brain fluid
- 2) At each frequency of interest, application of these channel sensitivity factors to model the exponential decay of SAR in a waveguide fluid cell, and hence derive the liquid conversion factors at that frequency
- 3) Determination of the effective tip radius and angular offset of the X channel which together optimise the probe's spherical isotropy in 900MHz brain fluid

2. Probe Output

The probe channel output signals are linearised in the manner set out in Refs [1] and [2]. The following equation is utilized for each channel:

$$U_{lin} = U_{o/p} + U_{o/p}^2 / DCP \quad (1)$$

where U_{lin} is the linearised signal, $U_{o/p}$ is the raw output signal in voltage units and DCP is the diode compression potential in similar voltage units.

DCP is determined from fitting equation (1) to measurements of U_{lin} versus source feed power over the full dynamic range of the probe. The DCP is a characteristic of the Schottky diodes used as the sensors. For the IXP-050 probes with CW signals the DCP values are typically 0.10V (or 20 in the voltage units used by Indexsar software, which are V*200).

In turn, measurements of E-field are determined using the following equation (where output voltages are also in units of V*200):

$$\begin{aligned} E_{liq}^2 (V/m) = & U_{linx} * Air Factor_x * Liq Factor_x \\ & + U_{liny} * Air Factor_y * Liq Factor_y \\ & + U_{linz} * Air Factor_z * Liq Factor_z \end{aligned} \quad (3)$$

Here, "Air Factor" represents each channel's sensitivity, while "Liq Factor" represents the enhancement in signal level when the probe is immersed in tissue-simulant liquids at each frequency of interest.

CALIBRATION PROCEDURE - Continued

3. Selecting Channel Sensitivity Factors To Optimise Isotropic Response

After manufacture, the first stage of the calibration process is to balance the three channels' Air Factor values, thereby optimising the probe's overall axial response ("rotational isotropy").

To do this, an 1800MHz waveguide containing head-fluid simulant is selected. Like all waveguides used during probe calibration, this particular waveguide contains two distinct sections: an air-filled launcher section, and a liquid cell section, separated by a dielectric matching window designed to minimise reflections at the air-liquid interface.

The waveguide stands in an upright position and the liquid cell section is filled with 1800MHz brain fluid to within 10 mm of the open end. The depth of liquid ensures there is negligible radiation from the waveguide open top and that the probe calibration is not influenced by reflections from nearby objects.

During the measurement, a TE_{01} mode is launched into the waveguide by means of an N-type-to-waveguide adapter. The probe is then lowered vertically into the liquid until the tip is exactly 115mm above the centre of the dielectric window. This particular separation ensures that the probe is operating in a part of the waveguide where boundary corrections are not necessary.

Care must also be taken that the probe tip is centred while rotating.

The exact power applied to the input of the waveguide during this stage of the probe calibration is immaterial since only relative values are of interest while the probe rotates. However, the power must be sufficiently above the noise floor and free from drift.

The dedicated Indexsar calibration software rotates the probe in 10 degree steps about its axis, and at each position, an Indexsar 'Fast' amplifier samples the probe channels 500 times per second for 0.4 s. The raw $U_{o/p}$ data from each sample are packed into 10 bytes and transmitted back to the PC controller via an optical cable. U_{linx} , U_{liny} and U_{linz} are derived from the raw $U_{o/p}$ values and written to an Excel template.

Once data have been collected from a full probe rotation, the Air Factors are adjusted using a special Excel Solver routine to equalise the output from each channel and hence minimise the rotational isotropy. This automated approach to optimisation removes the effect of human bias.

Figure 5 represents the output from each diode sensor as a function of probe rotation angle. The directionality of the orthogonally-arranged sensors can be checked by analysing the data using dedicated Indexsar software, which displays the data in 3D format, a representative image of which is shown in Figure 3. The left-hand side of this diagram shows the individual channel outputs after linearisation (see above). The program uses these data to balance the channel outputs and then applies an optimisation process, which makes fine adjustments to the channel factors for optimum isotropic response.

CALIBRATION PROCEDURE - Continued

4. Determination Of Conversion ("Liquid") Factors At Each Frequency Of Interest

A lookup table of conversion factors for a probe allows a SAR value to be derived at the measured frequencies, and for either brain or body fluid-simulant.

The method by which the conversion factors are assessed is based on the comparison between measured and analytical rates of decay of SAR with height above a dielectric window. This way, not only can the conversion factors for that frequency/fluid combination be determined, but an allowance can also be made for the scale and range of boundary layer effects.

The theoretical relationship between the SAR at the cross-sectional centre of the lossy waveguide as a function of the longitudinal distance (z) from the dielectric separator is given by Equation 4:

$$SAR(z) = \frac{4(P_f - P_b)}{\rho ab \delta} e^{-2z/\delta} \quad (4)$$

Here, the density ρ is conventionally assumed to be 1000 kg/m^3 , ab is the cross-sectional area of the waveguide, and P_f and P_b are the forward and reflected power inside the lossless section of the waveguide, respectively. The penetration depth δ (which is the reciprocal of the waveguide-mode attenuation coefficient) is a property of the lossy liquid and is given by Equation (5).

$$\delta = \left[\text{Re} \left\{ \sqrt{(\pi/a)^2 + j\omega\mu_o(\sigma + j\omega\epsilon_o\epsilon_r)} \right\} \right]^{-1} \quad (5)$$

where σ is the conductivity of the tissue-simulant liquid in S/m, ϵ_r is its relative permittivity, and ω is the radial frequency (rad/s). Values for σ and ϵ_r are obtained prior to each waveguide test using an Indextsar DiLine measurement kit, which uses the TEM method as recommended in [2]. σ and ϵ_r are both temperature- and fluid-dependent, so are best measured using a sample of the tissue-simulant fluid immediately prior to the actual calibration.

Wherever possible, all DiLine and calibration measurements should be made in the open laboratory at $22 \pm 2.0^\circ\text{C}$; if this is not possible, the values of σ and ϵ_r should reflect the actual temperature. Values employed for calibration are listed in the tables below.

By ensuring the liquid height in the waveguide is at least three penetration depths, reflections at the upper surface of the liquid are negligible. The power absorbed in the liquid is therefore determined solely from the waveguide forward and reflected power.

Different waveguides are used for 835/900MHz, 1800/1900MHz, 2450MHz and 5200/5800MHz measurements. Table A.1 of [1] can be used for designing calibration waveguides with a return loss greater than 20 dB at the most important frequencies used for personal wireless communications, and better than 15dB for frequencies

CALIBRATION PROCEDURE - Continued

4. Determination Of Conversion (“Liquid”) Factors At Each Frequency Of Interest - Continued

greater than 5GHz. Values for the penetration depth for these specific fixtures and tissue-simulating mixtures are also listed in Table A.1.

According to [1], this calibration technique provides excellent accuracy, with standard uncertainty of less than 3.6% depending on the frequency and medium. The calibration itself is reduced to power measurements traceable to a standard calibration procedure. The practical limitation to the frequency band of 800 to 5800 MHz because of the waveguide size is not severe in the context of compliance testing.

During calibration, the probe is lowered carefully until it is just touching the cross-sectional centre of the dielectric window. 200 samples are then taken and written to an Excel template file before moving the probe vertically upwards. This cycle is repeated 50 times. The vertical separation between readings is determined from practical considerations of the expected SAR decay rate, and range from 1mm steps at low frequency, through 0.5mm at 2450MHz, down to 0.2mm at 5GHz.

Once the data collection is complete, a Solver routine is run which optimises the measured-theoretical fit by varying the conversion factor, and the boundary correction size and range.

5. Measurement of Spherical Isotropy

The setup for measuring the probe’s spherical isotropy is shown in Figure 2.

A box phantom containing 900MHz head fluid is irradiated by a vertically-polarised, tuned dipole, mounted to the side of the phantom on the robot’s seventh axis. During calibration, the spherical response is generated by rotating the probe about its axis in 20 degree steps and changing the dipole polarisation in 10 degree steps.

By using the VPM technique discussed below, an allowance can also be made for the effect of E-field gradient across the probe’s spatial extent. This permits values for the probe’s effective tip radius and X-channel angular offset to be modelled until the overall spherical isotropy figure is optimised.

The dipole is connected to a signal generator and amplifier via a directional coupler and power meter. As with the determination of rotational isotropy, the absolute power level is not important as long as it is stable.

The probe is positioned within the fluid so that its sensors are at the same vertical height as the centre of the source dipole. The line joining probe to dipole should be perpendicular to the phantom wall, while the horizontal separation between the two should be small enough for VPM corrections to be applicable, without encroaching near the boundary layer of the phantom wall. VPM corrections require a knowledge of the fluid skin depth. This is measured during the calibration by recording the E-field strength while systematically moving the probe away from the dipole in 2mm steps over a 215mm range.

VPM (Virtual Probe Miniaturisation)

SAR probes with 3 diode-sensors in an orthogonal arrangement are designed to display an isotropic response when exposed to a uniform field. However, the probes are ordinarily used for measurements in non-uniform fields and isotropy is not

CALIBRATION PROCEDURE – Continued

5. Measurement of Spherical Isotropy - Continued

assured when the field gradients are significant compared to the dimensions of the tip containing the three orthogonally-arranged dipole sensors.

It becomes increasingly important to assess the effects of field gradients on SAR probe readings when higher frequencies are being used. For Indexsar IXP-050 probes, which are of 5mm tip diameter, field gradient effects are minor at GSM frequencies, but are major above 5GHz. Smaller probes are less affected by field gradients and so probes, which are significantly less than 5mm diameter, would be better for applications above 5GHz.

The IndexSAR report IXS0223 describes theoretical and experimental studies to evaluate the issues associated with the use of probes at arbitrary angles to surfaces and field directions. Based upon these studies, the procedures and uncertainty analyses referred to in P1528 are addressed for the full range of probe presentation angles.

In addition, generalized procedures for correcting for the finite size of immersible SAR probes are developed. Use of these procedures enables application of schemes for virtual probe miniaturization (VPM) – allowing probes of a specific size to be used where physically-smaller probes would otherwise be required.

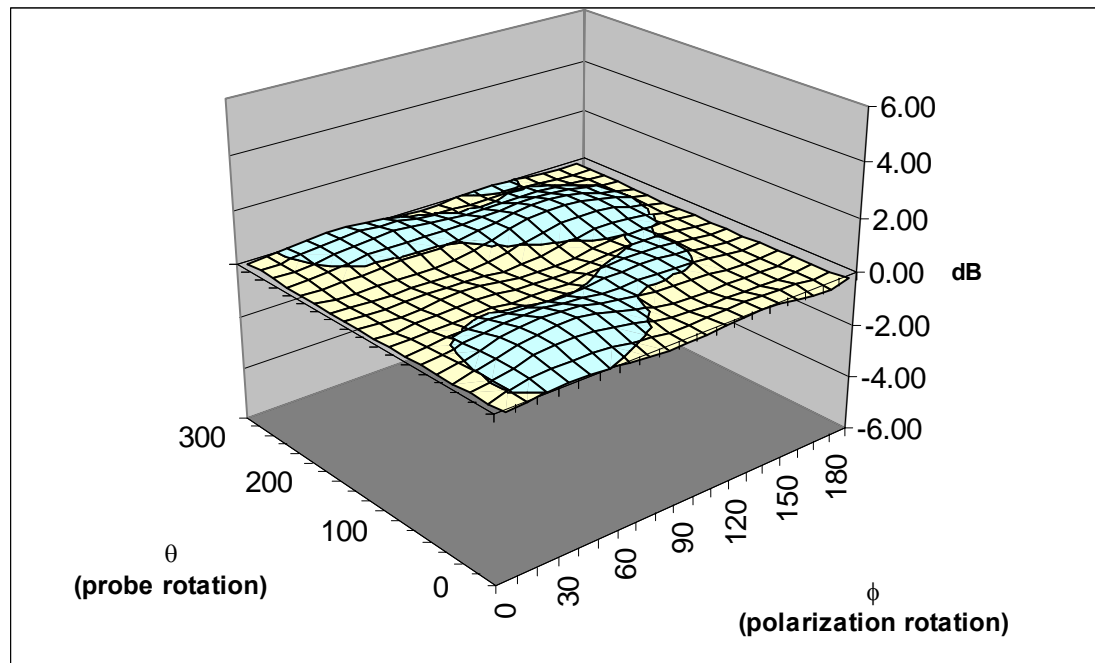
Given the typical dimensions of 3-channel SAR probes presently available, use of the VPM technique extends the satisfactory measurement range to higher frequencies.

CALIBRATION FACTORS MEASURED FOR PROBE S/N 0170

The probe was calibrated at 835, 900, 1800, 1900, 2450, 5200 and 5800 MHz in liquid samples representing both brain liquid and body fluid at these frequencies. The calibration was for CW signals only, and the axis of the probe was parallel to the direction of propagation of the incident field i.e. end-on to the incident radiation. The axial isotropy of the probe was measured by rotating the probe about its axis in 10 degree steps through 360 degrees in this orientation.

The reference point for the calibration is in the centre of the probe's cross-section at a distance of 2.7 mm from the probe tip in the direction of the probe amplifier. A value of 2.7 mm should be used for the tip to sensor offset distance in the software. The distance of 2.7mm for assembled probes has been confirmed by taking X-ray images of the probe tips (see Figure 8).

It is important that the diode compression point and air factors used in the software are the same as those quoted in the results tables, as these are used to convert the diode output voltages to a SAR value.



Surface Isotropy diagram of IXP-050 Probe S/N 0170 at 900MHz after VPM (rotational isotropy at side $\pm 0.09\text{dB}$, spherical isotropy $\pm 0.44\text{dB}$)

Probe tip radius	1.33
X Ch. Angle to red dot	1

CALIBRATION FACTORS MEASURED FOR PROBE S/N 0170 - Continued

Frequency	Head		Body	
	Bdy. Corr. – f(0)	Bdy. Corr. – d(mm)	Bdy. Corr. – f(0)	Bdy. Corr. – d(mm)
835	0.50	3.0	0.51	3.0
900	0.50	3.0	0.51	3.0
1800	0.69	1.6	0.60	1.9
1900	0.65	1.7	0.56	2.0
2450	0.39	3.0	0.43	3.0
5200	1.00	1.0	1.00	1.7
5800	1.00	1.0	1.00	1.8

SUMMARY OF CALIBRATION FACTORS FOR PROBE IXP-050 S/N 0170

Spherical isotropy measured at 900MHz	0.44	(+/-) dB
---------------------------------------	------	----------

	X	Y	Z	
Air Factors	406	385	409	(V*200)
CW DCPs	20	20	20	(V*200)

Freq (MHz)	Axial Isotropy		SAR ConvF		Notes
	(+/- dB)		(liq/air)		
	Head	Body	Head	Body	
835	-	-	0.256	0.273	1,2
900	-	-	0.258	0.280	1,2
1800	0.09	-	0.305	0.331	1,2
1900	-	-	0.314	0.346	1,2
2450	-	-	0.360	0.412	1,2
5200	-	-	0.372	0.635	1,2
5800	-	-	0.343	0.589	1,2

Notes	
1)	Calibrations done at 22°C +/-2°C
2)	Waveguide calibration

PROBE SPECIFICATIONS

Indexsar probe 0170, along with its calibration, is compared with CENELEC and IEEE standards recommendations (Refs [1] and [2]) in the Tables below. A listing of relevant specifications is contained in the tables below:

Dimensions	S/N 0170	CENELEC [1]	IEEE [2]
Overall length (mm)	350		
Tip length (mm)	10		
Body diameter (mm)	12		
Tip diameter (mm)	5.2	8	8
Distance from probe tip to dipole centers (mm)	2.7		

Dynamic range	S/N 0170	CENELEC [1]	IEEE [2]
Minimum (W/kg)	0.01	<0.02	0.01
Maximum (W/kg) N.B. only measured to > 100 W/kg on representative probes	>100	>100	100

Isotropy (measured at 900MHz)	S/N 0170	CENELEC [1]	IEEE [2]
Axial rotation with probe normal to source (+/- dB)	0.09 Max (See table above)	0.5	0.25
Spherical isotropy covering all orientations to source (+/- dB)	0.44	1.0	0.50

Construction	Each probe contains three orthogonal dipole sensors arranged on a triangular prism core, protected against static charges by built-in shielding, and covered at the tip by PEEK cylindrical enclosure material. No adhesives are used in the immersed section. Outer case materials are PEEK and heat-shrink sleeving.
Chemical resistance	Tested to be resistant to glycol and alcohol containing simulant liquids but probes should be removed, cleaned and dried when not in use.

REFERENCES

[1] CENELEC, EN 50361, July 2001. Basic Standard for the measurement of specific absorption rate related to human exposure to electromagnetic fields from mobile phones.

[2] IEEE 1528, Recommended practice for determining the spatial-peak specific absorption rate (SAR) in the human body due to wireless communications devices: Experimental techniques.

FIGURES

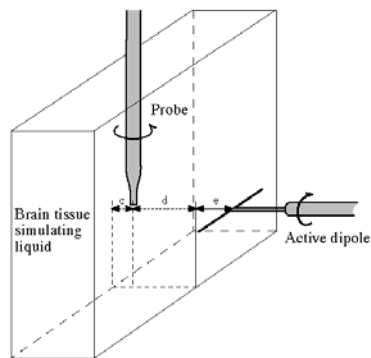
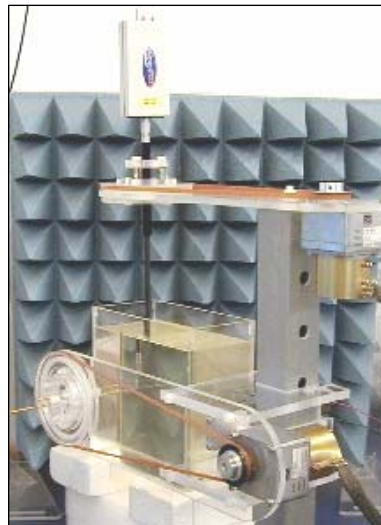


Figure 1. Spherical isotropy jig showing probe, dipole and box filled with simulated brain liquid (see Ref [2], Section A.5.2.1)

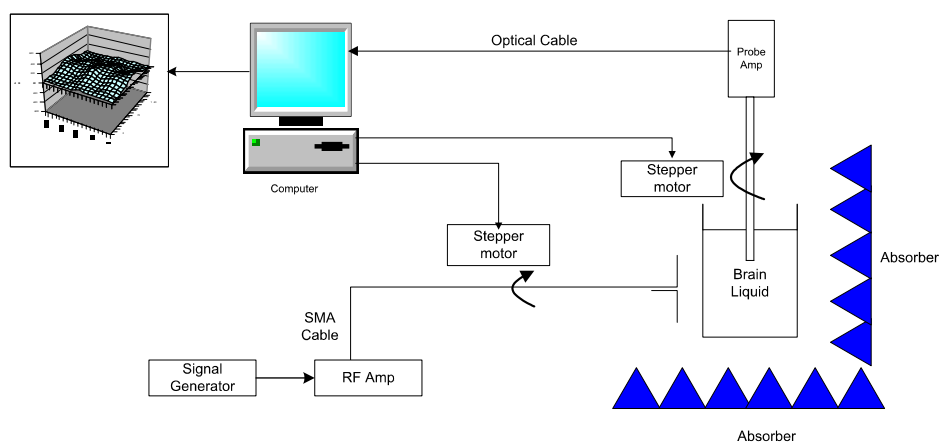


Figure 2. Schematic diagram of the test geometry used for isotropy determination

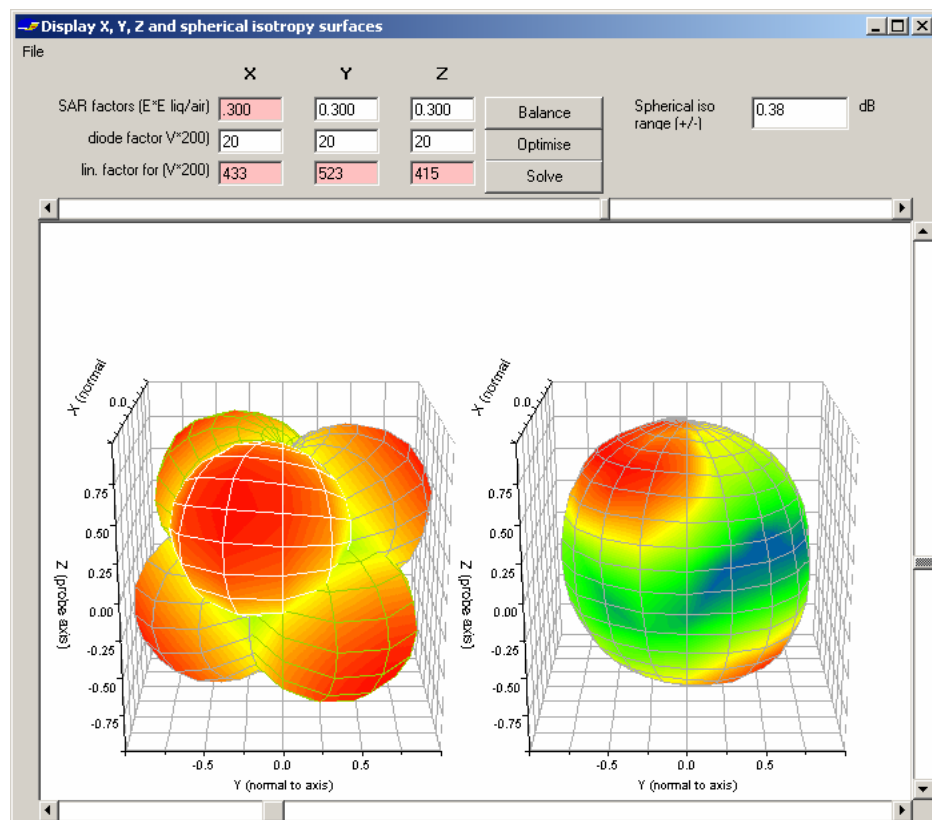


Figure 3. Graphical representation of a probe's response to fields applied from each direction. The diagram on the left shows the individual response characteristics of each of the three channels and the diagram on the right shows the resulting probe sensitivity in each direction. The colour range in the figure images the lowest values as blue and the maximum values as red. For the probe S/N 0170, this range is (+/-) 0.44 dB.

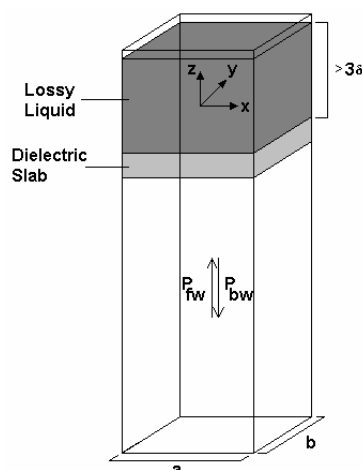


Figure 4. Geometry used for waveguide calibration (after Ref [2]. Section A.3.2.2)

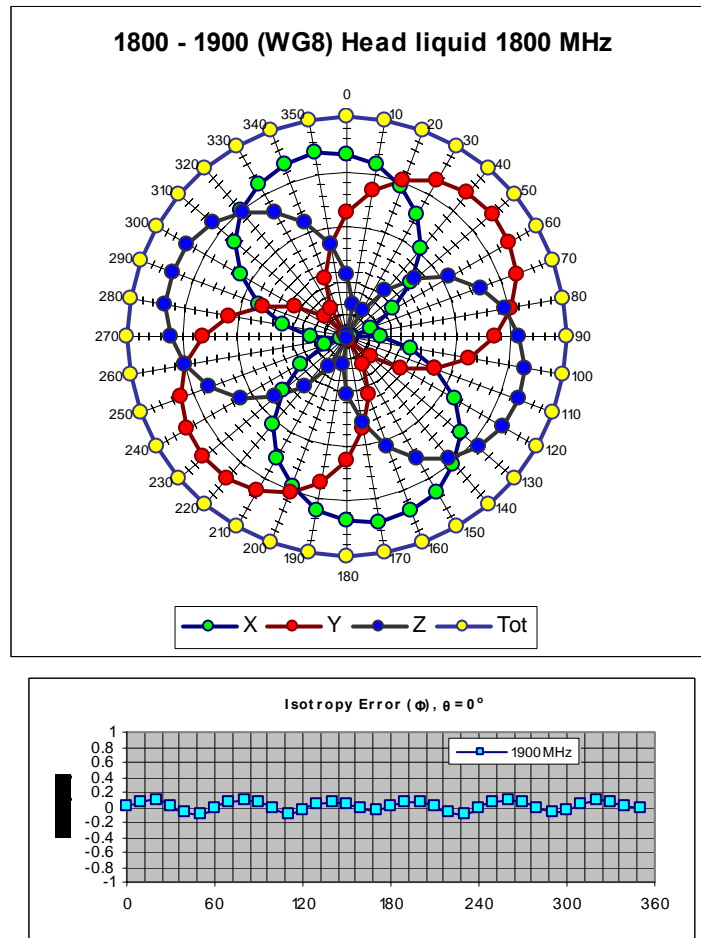


Figure 5. The rotational isotropy of probe S/N 0170 obtained by rotating the probe in a liquid-filled waveguide at 1800 MHz.

SAR DECAY FUNCTION – Analytical and Measurements

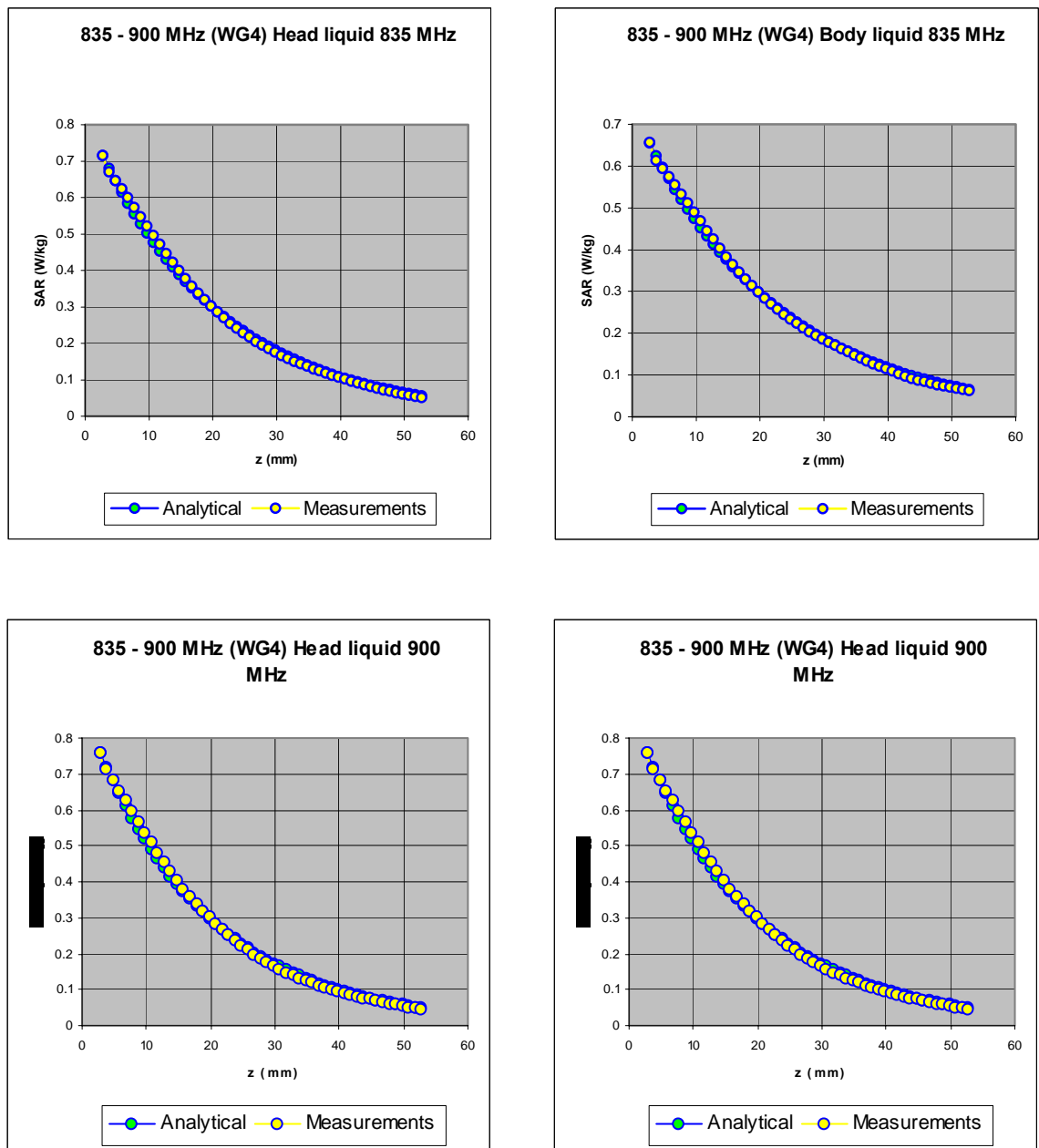


Figure 6a. The measured SAR decay function along the centreline of the WG4 waveguide with conversion factors adjusted to fit to the theoretical function for the particular dimension, frequency, power and liquid properties employed.

SAR DECAY FUNCTION – Analytical and Measurements - Continued

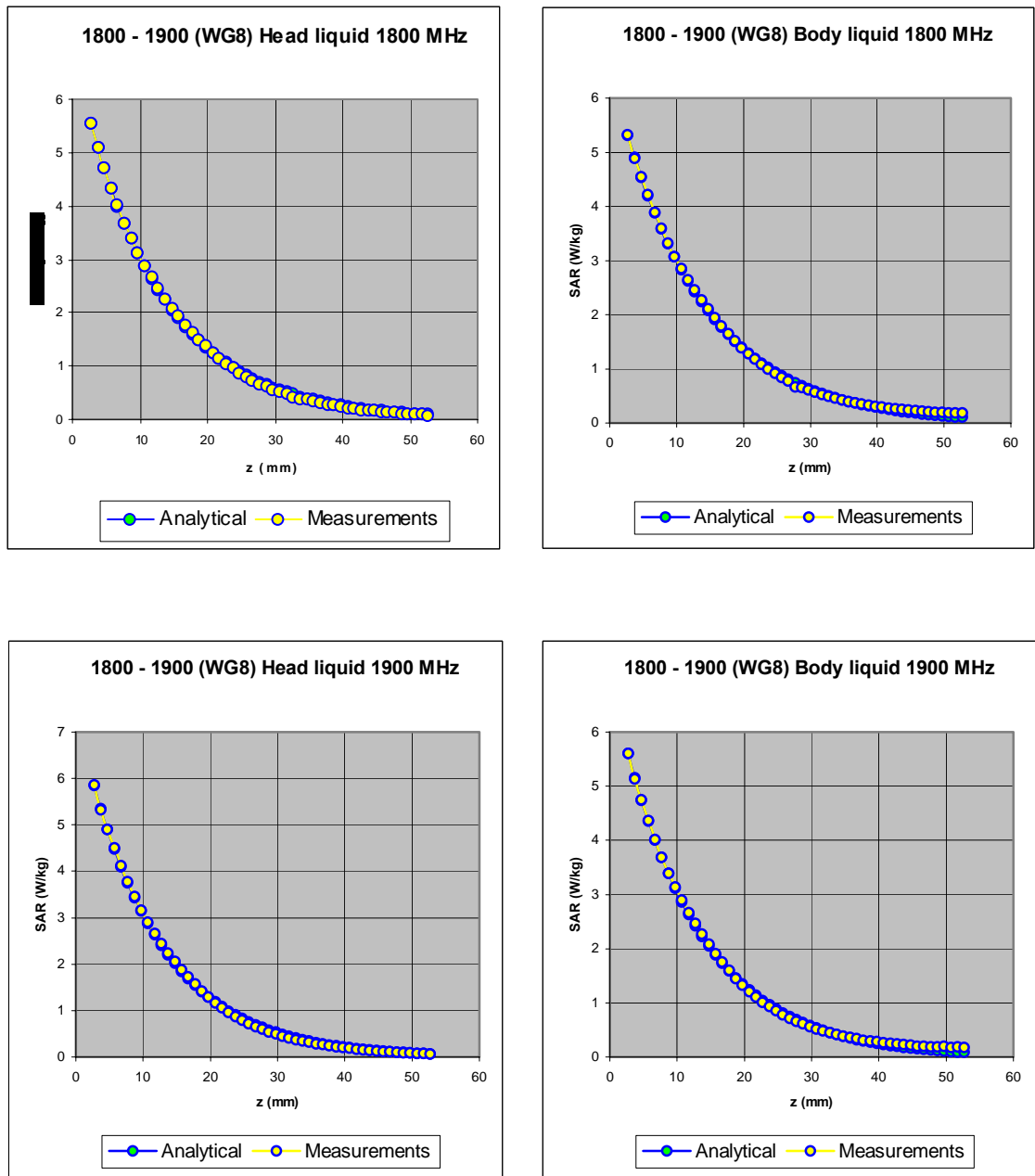


Figure 6b The measured SAR decay function along the centreline of the WG4 waveguide with conversion factors adjusted to fit to the theoretical function for the particular dimension, frequency, power and liquid properties employed.

SAR DECAY FUNCTION – Analytical and Measurements - Continued

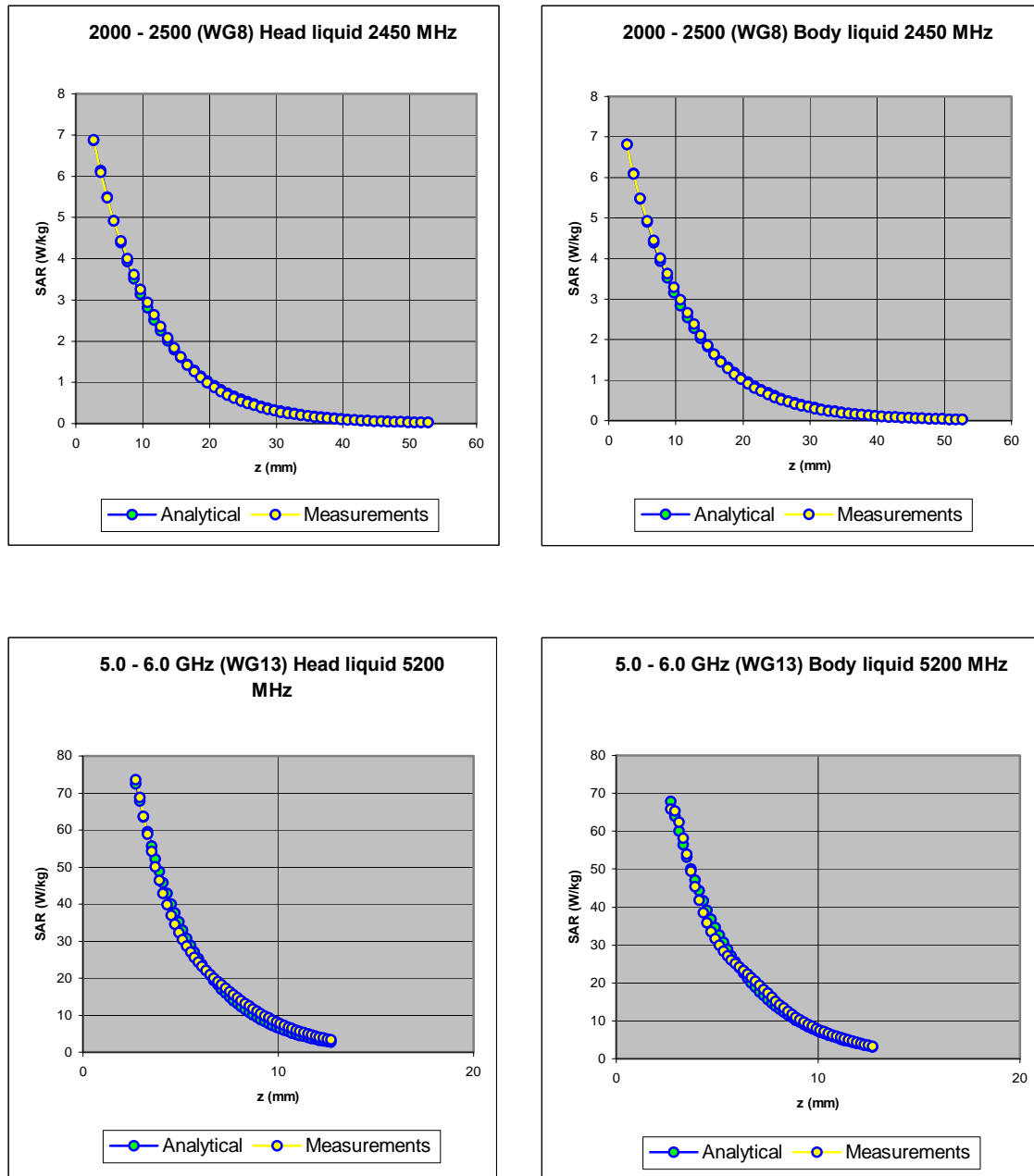


Figure 6c The measured SAR decay function along the centreline of the WG4 waveguide with conversion factors adjusted to fit to the theoretical function for the particular dimension, frequency, power and liquid properties employed.

SAR DECAY FUNCTION – Analytical And Measurements - Continued

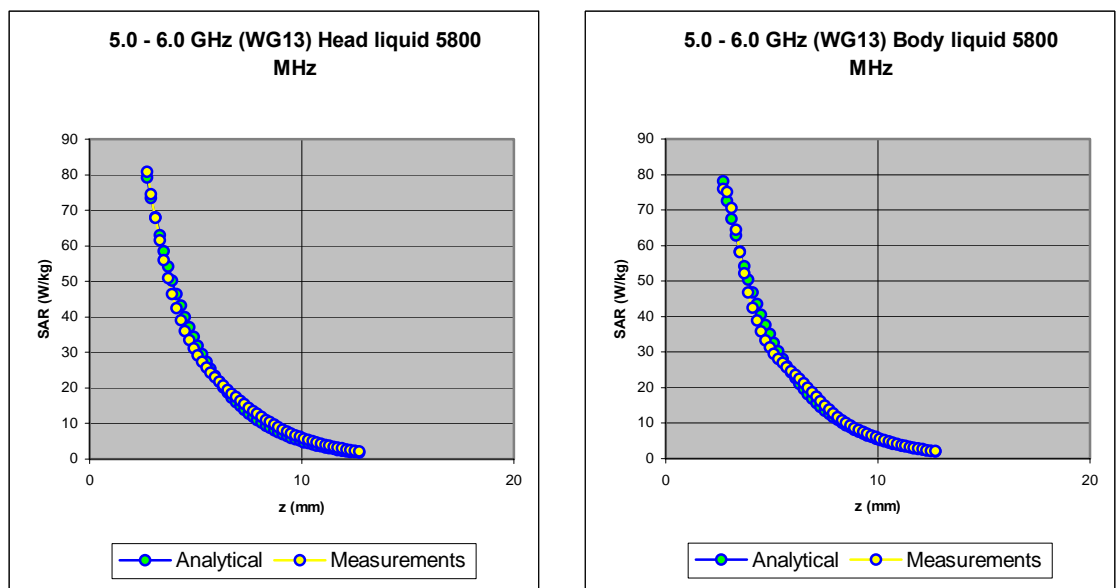


Figure 7. The measured SAR decay function along the centreline of the R22 waveguide with conversion factors adjusted to fit to the theoretical function for the particular dimension, frequency, power and liquid properties employed.

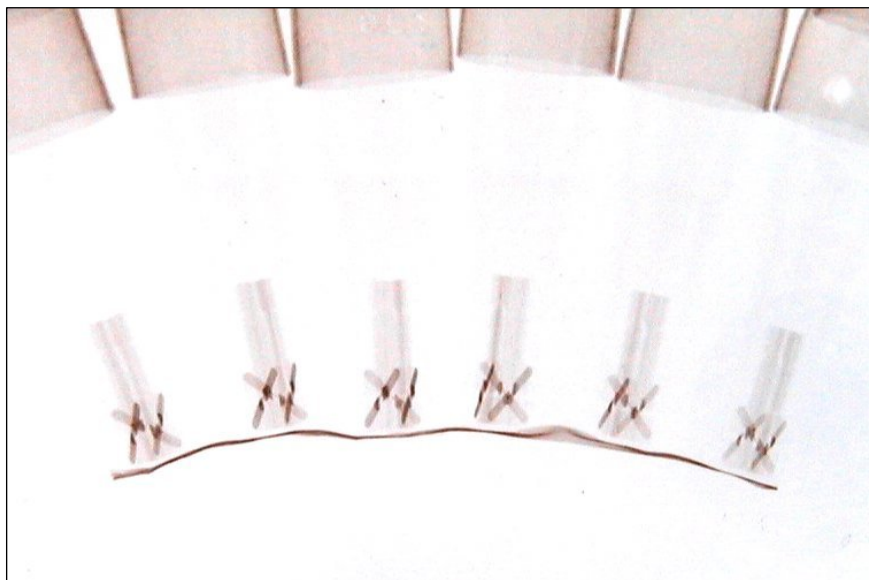


Figure 8: X-ray positive image of 5mm probes

TABLE INDICATING THE DIELECTRIC PARAMETERS OF THE LIQUIDS USED FOR CALIBRATIONS AT EACH FREQUENCY

Liquid used	Relative permittivity (measured)	Conductivity (S/m) (measured)
835 MHz BRAIN	41.07	0.89
835 MHz BODY	56.83	0.94
900 MHz BRAIN	40.28	0.95
900 MHz BODY	56.27	1.01
1800 MHz BRAIN	39.79	1.40
1800 MHz BODY	54.70	1.56
1900 MHz BRAIN	39.38	1.50
1900 MHz BODY	54.34	1.66
2450 MHz BRAIN	39.89	1.91
2450 MHz BODY	54.63	2.18
5200 MHz BRAIN	32.27	5.18
5200 MHz BODY	52.98	6.04
5800 MHz BRAIN	31.09	5.87
5800 MHz BODY	51.21	7.10