

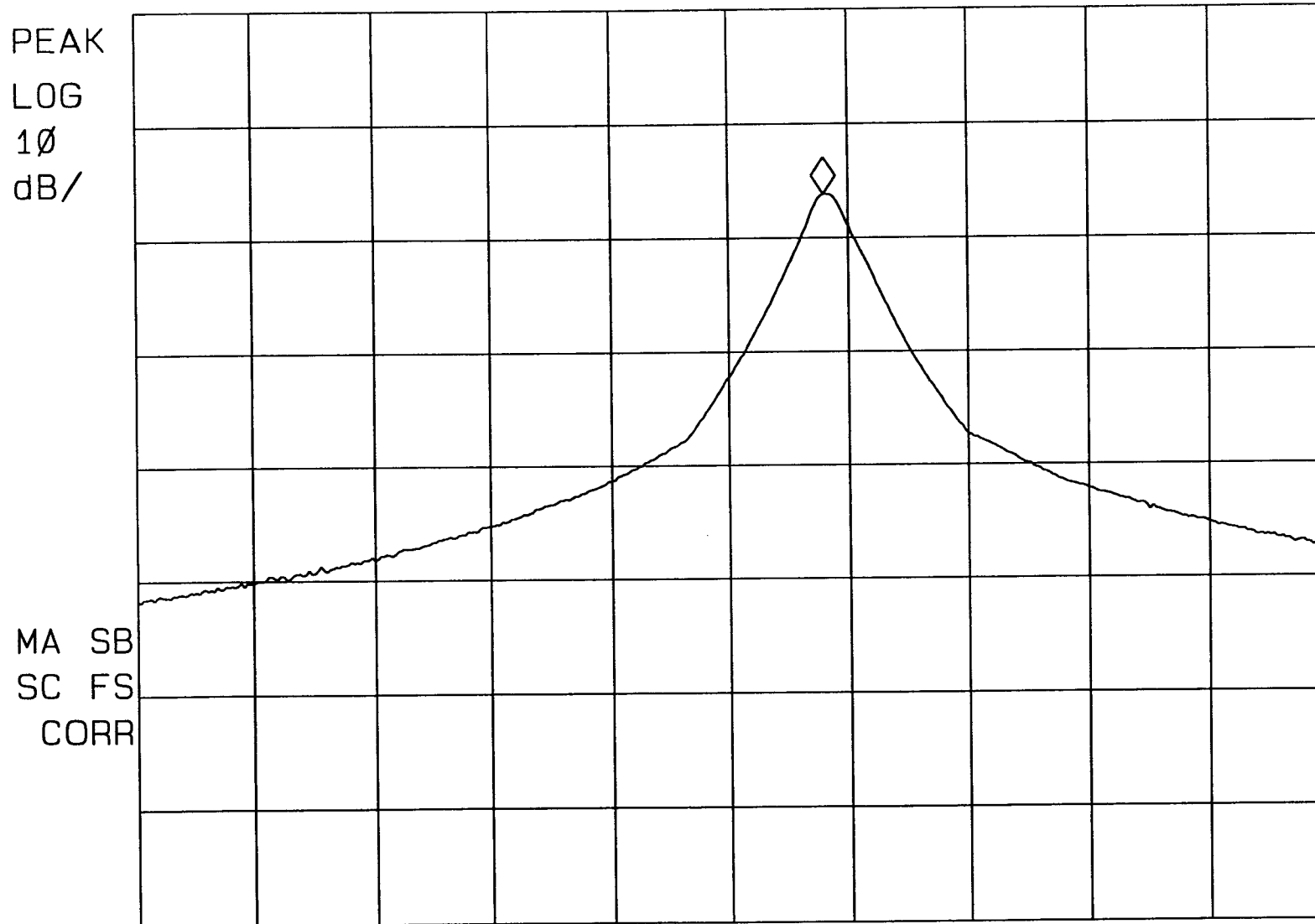
INTERTEK TESTING SERVICES

Report No.: 0522139  
Model No.: 8304  
Sample No.: 1/1

*hp* Pursuant to FCC Part 15 Section 15.227 Emissions Requirement

MKR 134.4 kHz  
-31.14 dB

REF -20.0 dBm AT 10 dB



Tested By: Chan Ho Xin  
(Chan Ho Xin)  
Date: 25/10/2005  
Checked By: Gary Li  
(Gary Li)  
Date: 28/10/05  
Test Result: Pass / Fail / NA

START 26.9600 MHz STOP 27.2800 MHz  
#RES BW 10 kHz #VBW 3 MHz #SWP 2.00 sec