

INTERTEK TESTING SERVICES

Report No.: 0522142  
 Model No.: 8204 (TK)  
 Sample No.: 111

*hp* Pursuant to FCC Part 15 Section 15.227 Emissions Requirement

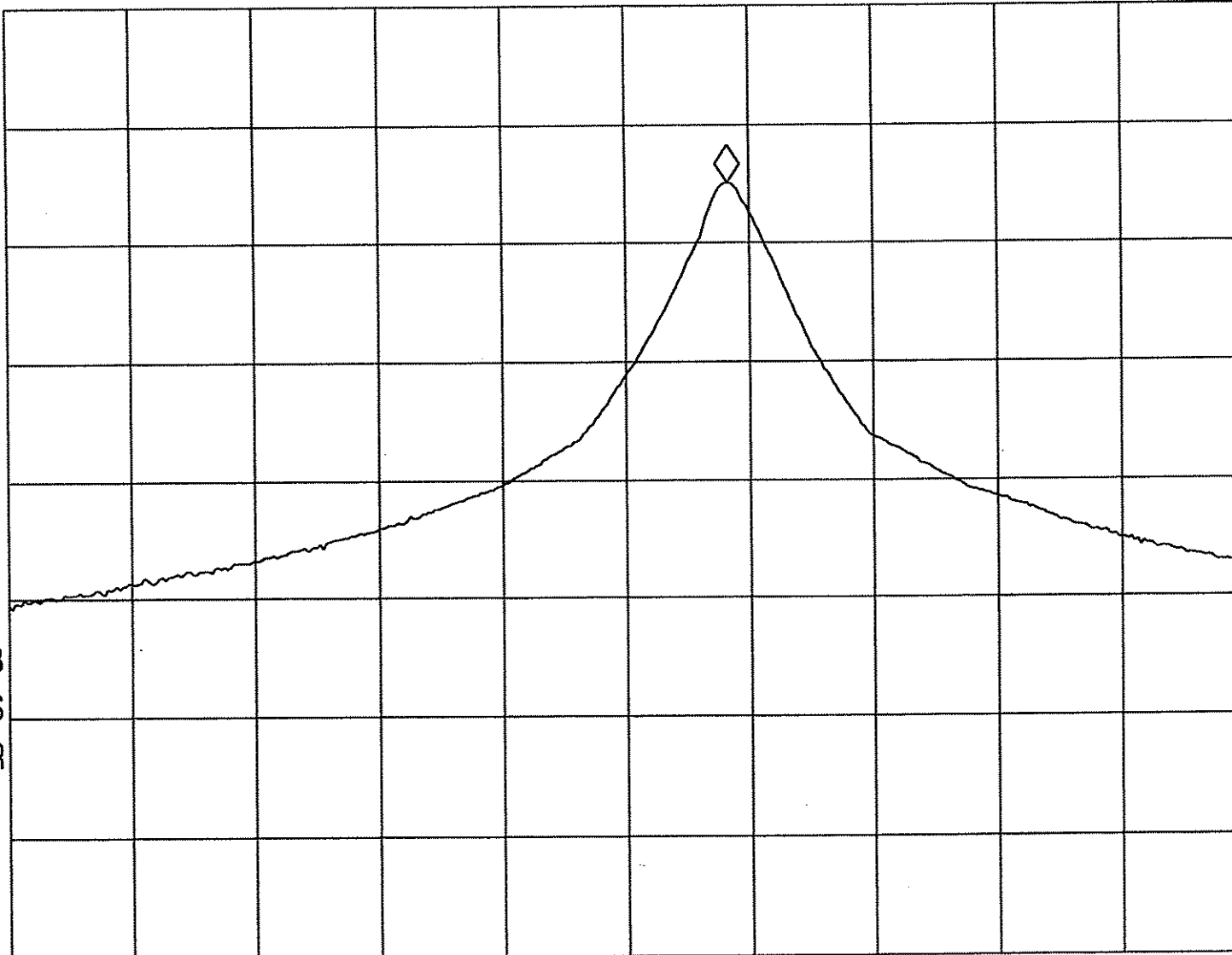
MKR 133.6 kHz

REF -20.0 dBm

AT 10 dB

-32.37 dB

PEAK  
 LOG  
 10  
 dB/



WA SB  
 SC FS  
 CORR

Tested By: *Ken*  
 (Chen Ho Km)

Date: 25/10/2005

Checked By: *Gary Li*

Date: 29/10/2005

Test Result: Pass / Fail / NA

START 26.9600 MHz

STOP 27.2800 MHz

#RES BW 10 kHz

#VBW 3 MHz

#SWP 2.00 sec