

Auluxe Bi



Auluxe Bi

BD1020

Z2

Bluetooth Speaker

使用説明書/ 使用説明书/ 取扱説明書
Instruction Manual/ Benutzerhandbuch

This manual may not be reproduced, distributed, modified or posted to websites without the express written permission of Auluxe Corporation.



Designed and Engineered by Auluxe Corporation.
© 2014 Auluxe Corporation. All Rights Reserved. Printed in China.

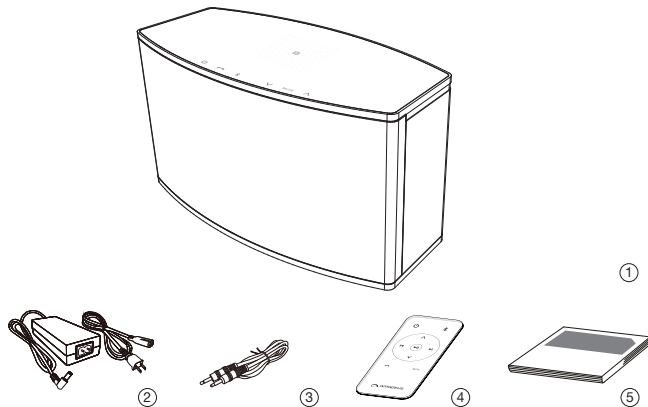


Specification

Operating voltage	AC100 - 240V / 50 - 60 Hz(Input) DC15V2A(Onput)
System Type	2.0 Channels BT Speaker
Rated output power	10 Watts x 2
Frequency Range	70 -18,000 Hz
Temperature range	0 - 40 °C
Net weight	1.837 kg
Dimensions (WxHxD)	250 x 140 x 130 mm

Getting to know your product

How to connect the product



Open the box and check for the following items :

- ① The host machine - Z2
- ② One power adapter
- ③ One 3.5mm audio line
- ④ One remote controller
- ⑤ One instruction manual

Features of Z2



Bluetooth



NFC



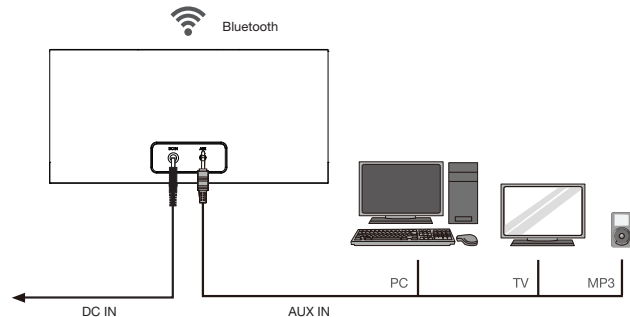
Hands-Free



Touch Panel



Aux in



- Switch ON the unit, Power On

Connect the power cord to “DC in” on the rear panel of the speaker system. Connect the power supply unit to a power socket.

- 3.5mm AUX in

Connect the 3.5mm audio line to the “AUX in” socket on the rear panel of the speaker system, with the other end connected to the Earphone Output jack of your desk-top PC, NB, or any other music player. (This audio line is not needed if Bluetooth is used for playing music.)

- Bluetooth music transmission

A light touch of this button for 2 seconds to activate Bluetooth mode; On the unit. You then activate the BT pairing function on your smart phone to search/connect with the “Z2” ; Then you can stream your favorite music via the Bluetooth connection.

How to connect the product

【Precautions】

Effective distance for the Bluetooth receiver is 10m maximum in an unobstructed range; it may be reduced due to obstacles between transmitter and receiver.

【Out of range or signal interruption】

When the device is out of the range of the Bluetooth receiver, or when any obstacle gets in the way of transmission, the connection may be interrupted. To avoid interruption, please follow these instructions:

1. Make sure that the effective range of 10m is not exceeded, and that no obstacle gets between the portable device and the receiver.
2. In case the portable device is moved out of the range, moving it back into the range will resume the Bluetooth connection again.
3. In case the separation from the range is too far and the connection cannot be resumed automatically, please the Bluetooth function key for 2secs to activate pairing function on the unit.then to have your smart phone to re-cinnect with Z2 device.

Touch-panel operation interface



Power Switch. Click this button to switch ON the machine. Press again to power off.



Hands-Free. Pressing this button when the cell phone is showing an incoming call will activate Hands-Free function, for the user to make the call in Loudspeaker Mode. (Press again to terminate the call.)



Click this button for 2 seconds to activate Bluetooth mode; when flashing blue light, the machine is entering in pairing mode. The user then activates the Z2 device of the cell phone for paring with a Bluetooth device. the machine is connected successfully when blue light turns steady and the system is ready for playing back music.



Press this button to decrease volume while playing music or in Hands-Free mode.

MUTE



Press this button to mute the sound output while playing music or in Hands-Free mode.



Press this button to increase volume while playing music or in Hands-Free mode.

The NFC function enables your Android smartphone to fast pair with another Bluetooth device.

1. Switch on the NFC function of your Android smart phone (if available).
2. Move your smartphone above the "N" logo of your product.
3. when a warning window pops out on your phone,select" connect" or"confirm/ok" to complete the NFC connection.
4. You may also disconnect your device with Z2 via NFC function. Please repeat step1 and step2 to disconnect the device.