

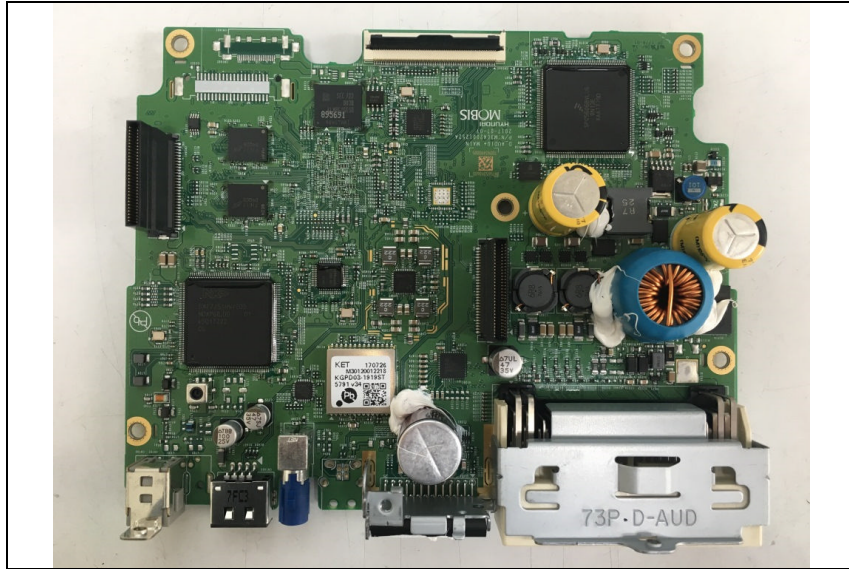
SGS

Internal photos of EUT

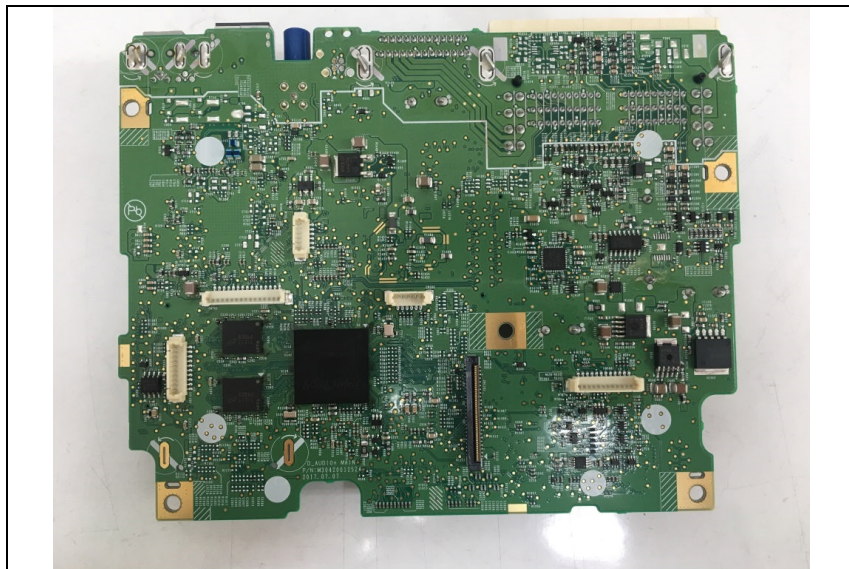
Internal view of EUT



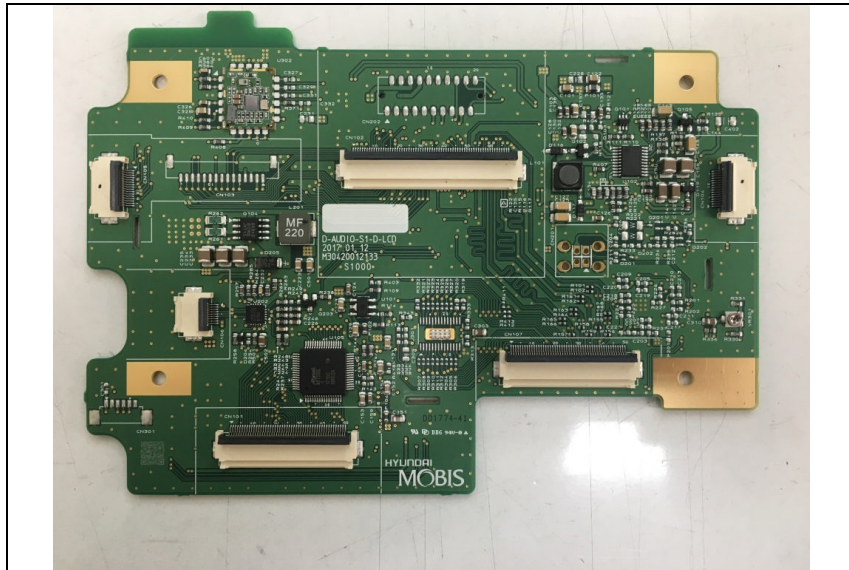
Top view of Main PCB



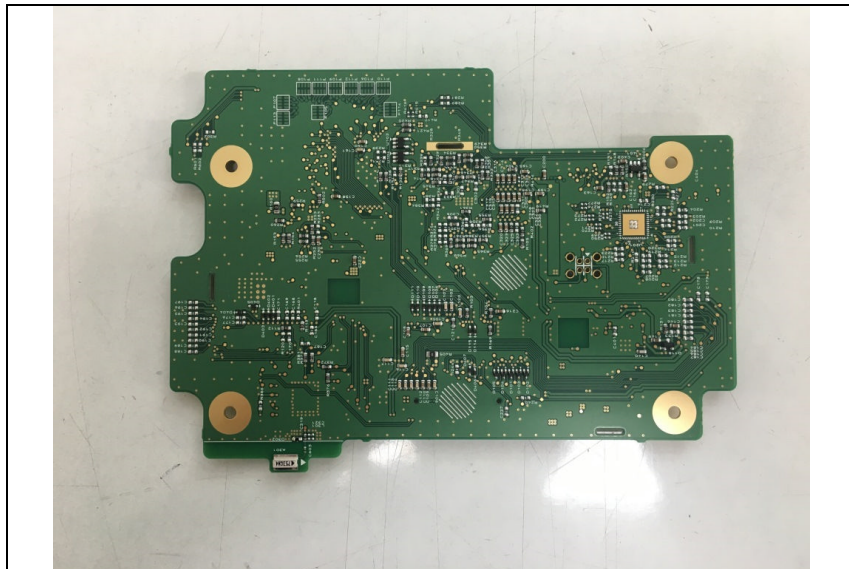
Bottom view of Main PCB



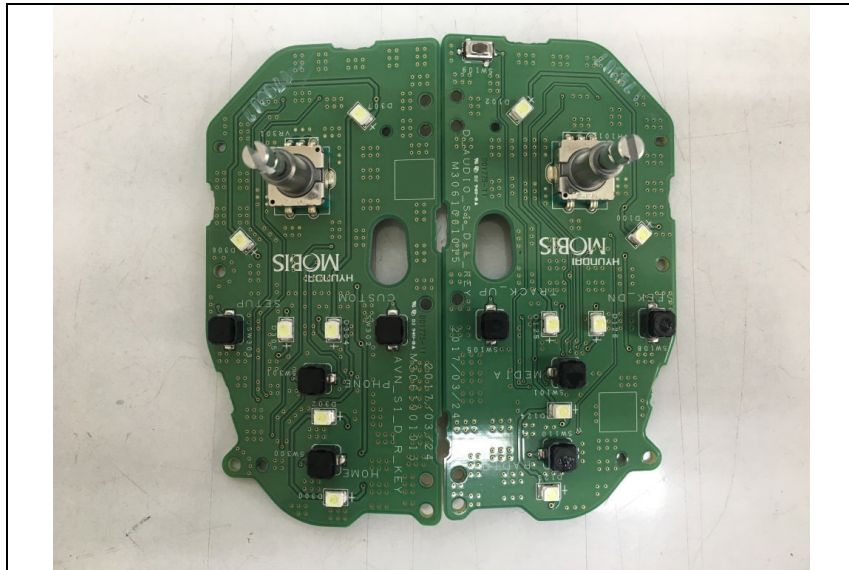
Top view of LCD PCB



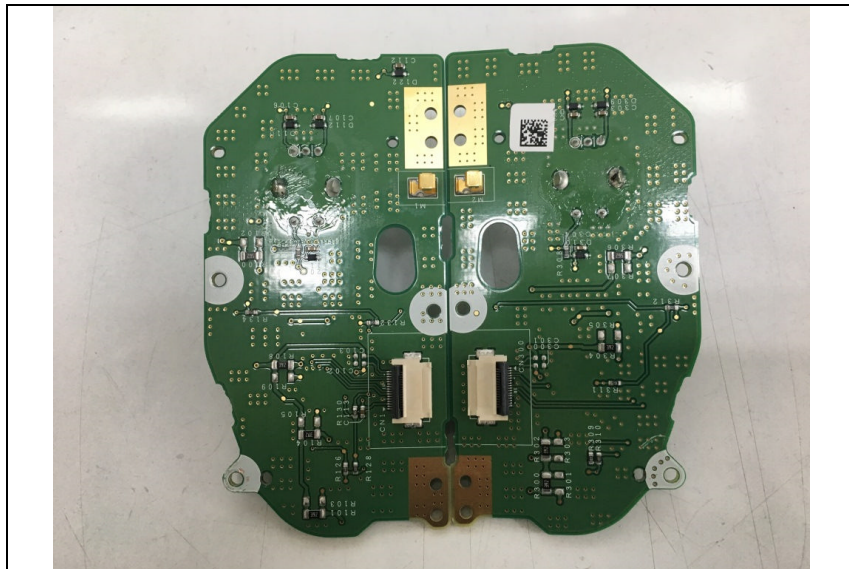
Bottom view of LCD PCB



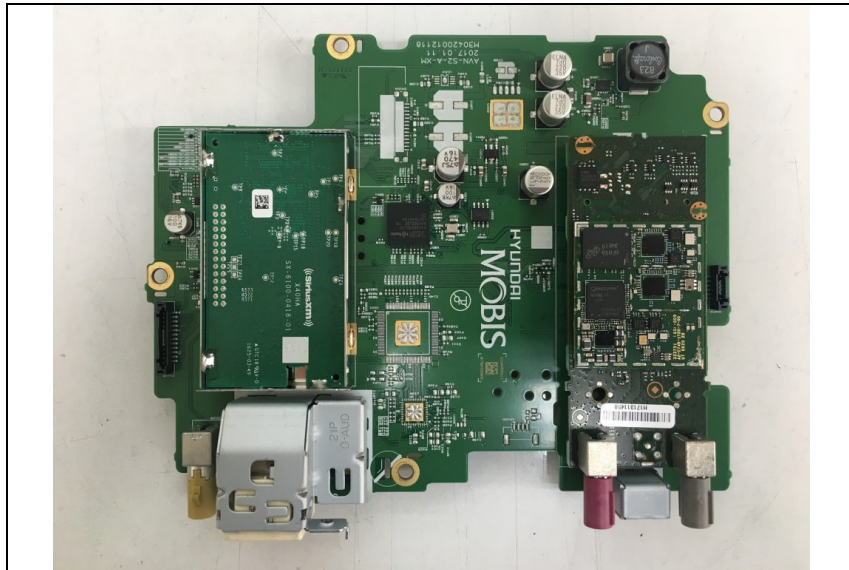
Top view of Sub PCB1



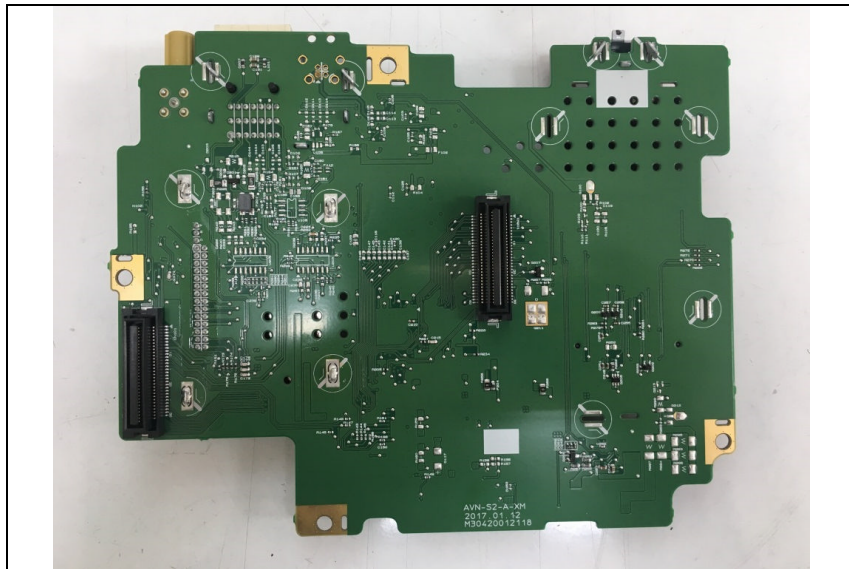
Bottom view of Sub PCB1



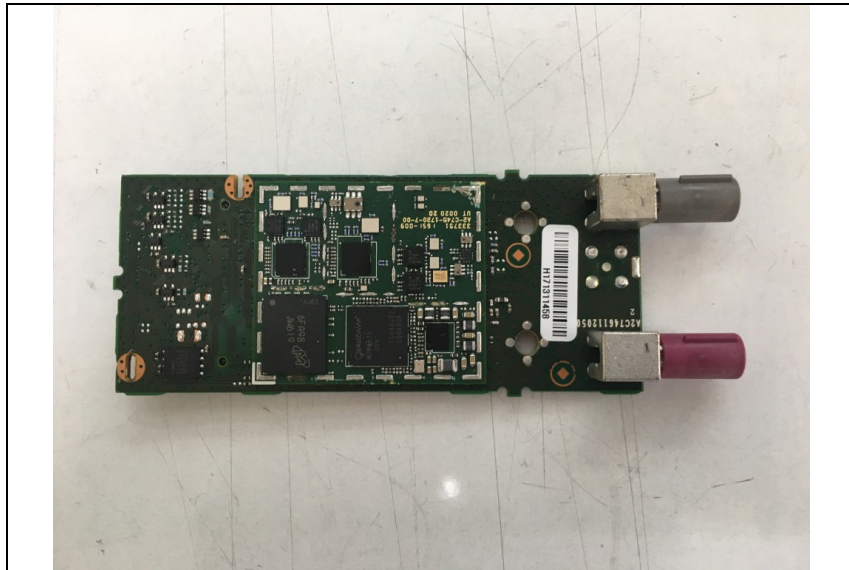
Top view of Sub PCB2



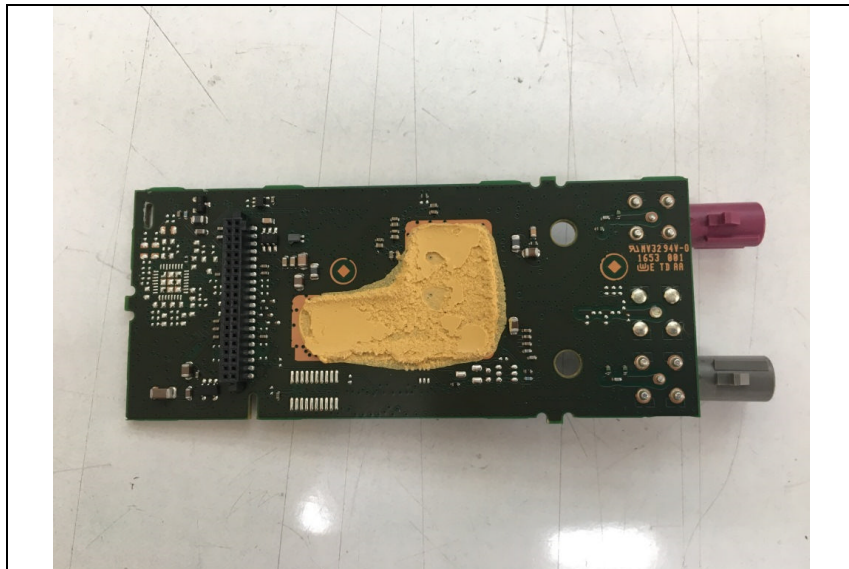
Bottom view of Sub PCB2



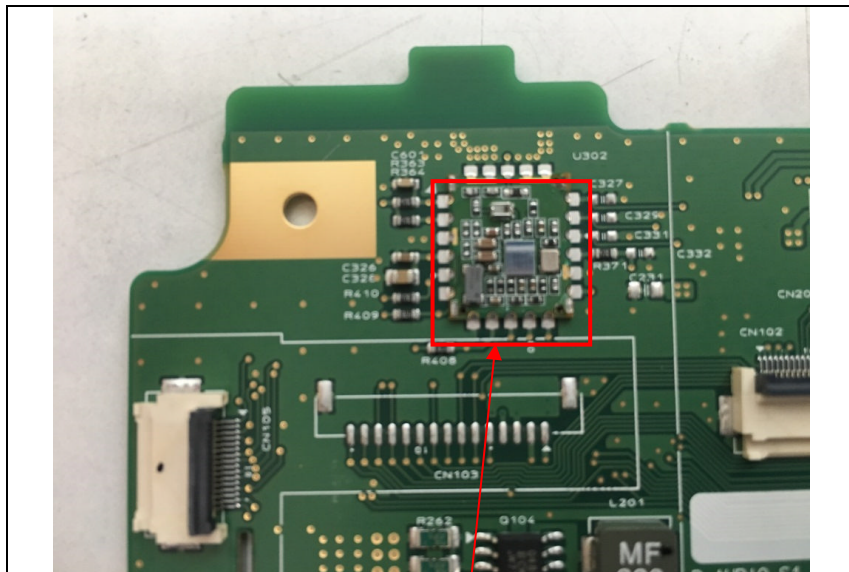
Top view of Sub PCB3



Bottom view of Sub PCB3

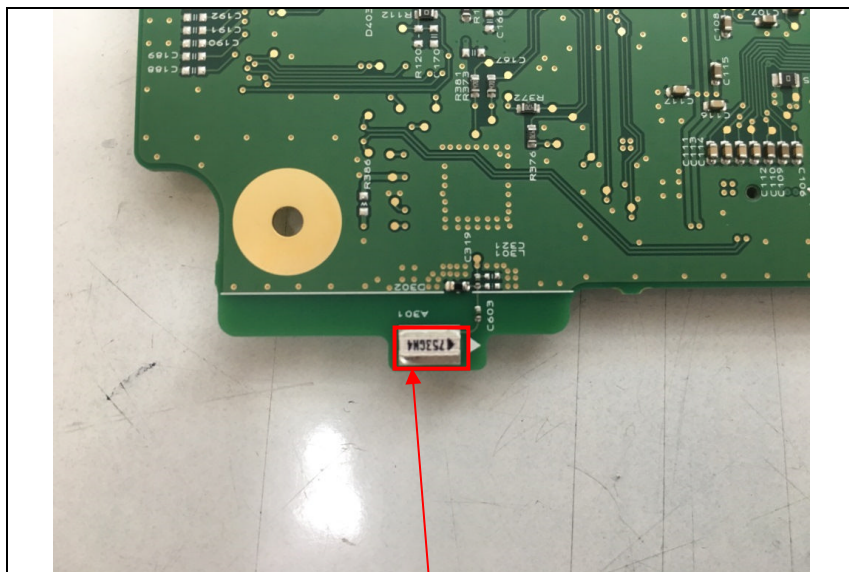


View of Bluetooth module



BT module

View of Bluetooth antenna



Dielectric Chip Antenna