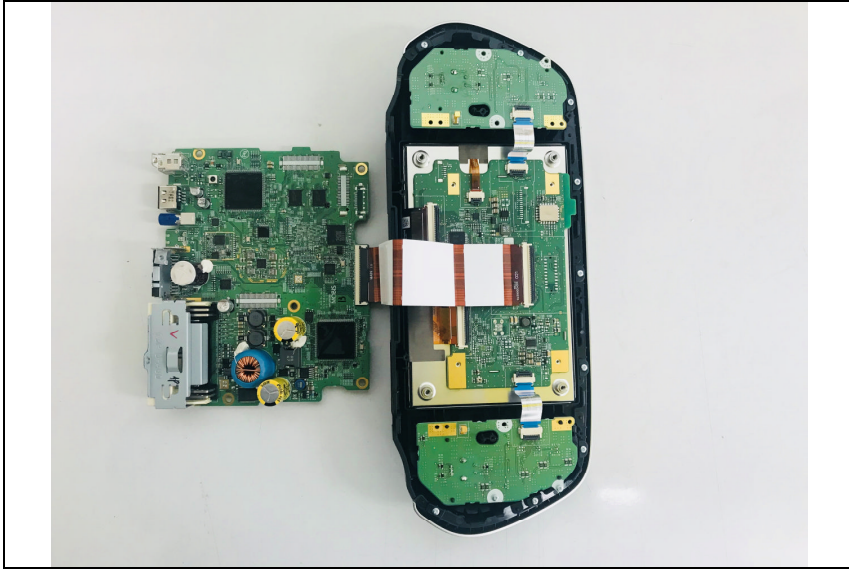


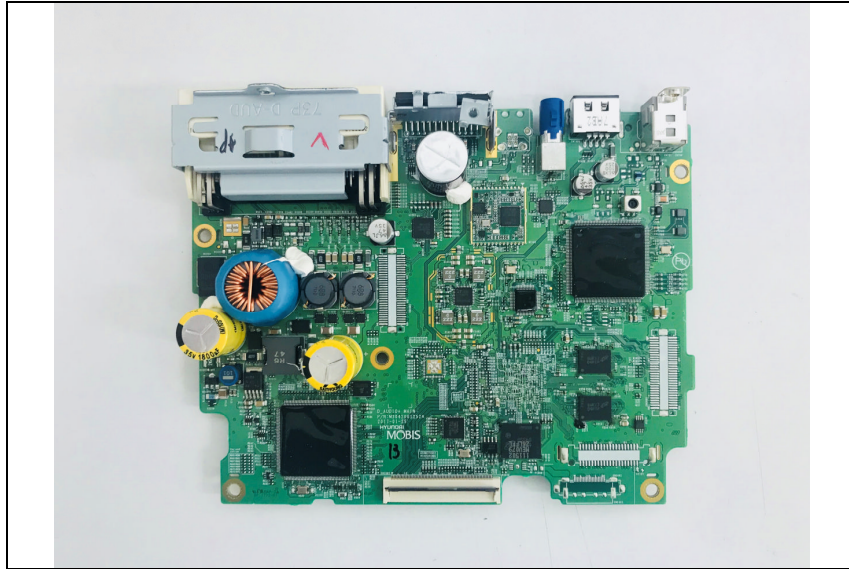
SGS

Internal photos of EUT

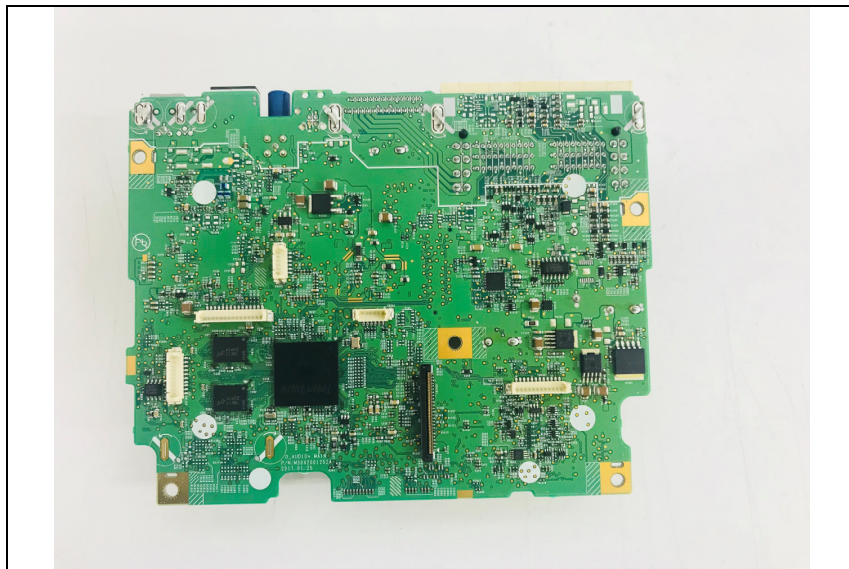
Internal view of EUT



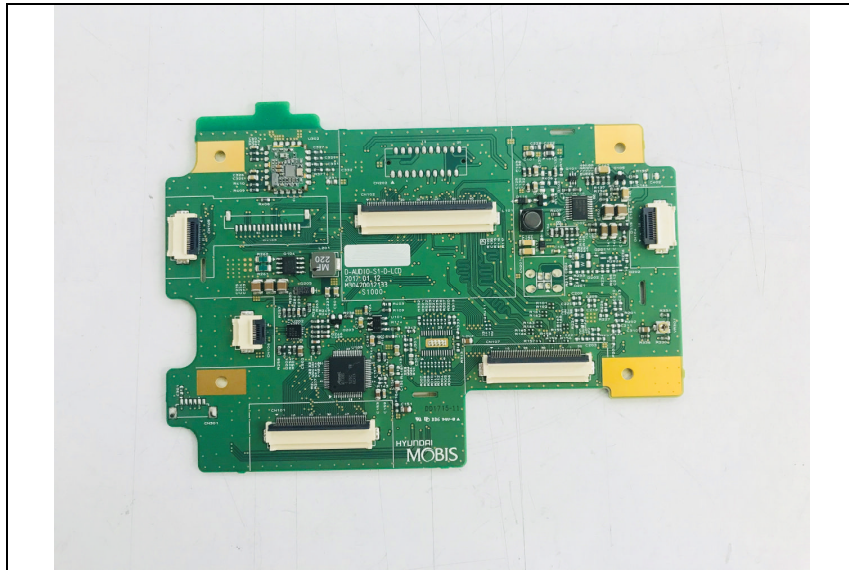
Top view of Main PCB



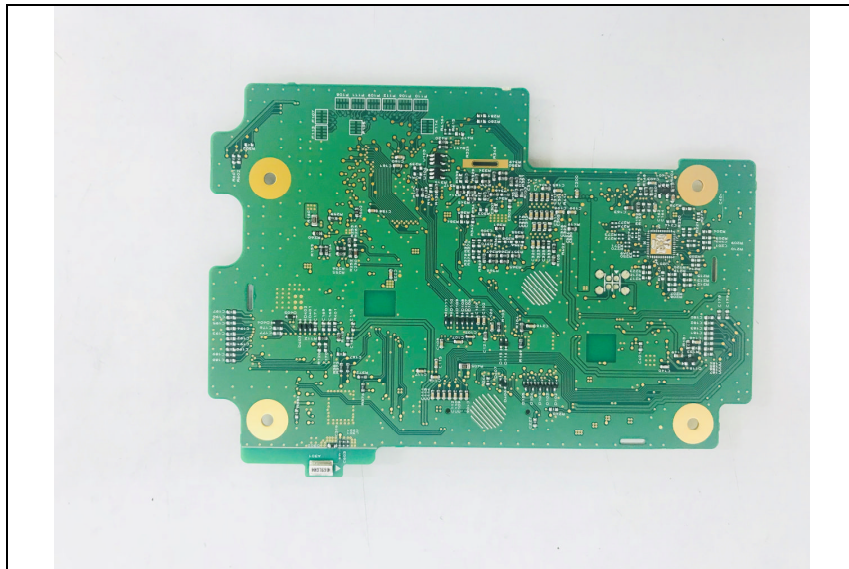
Bottom view of Main PCB



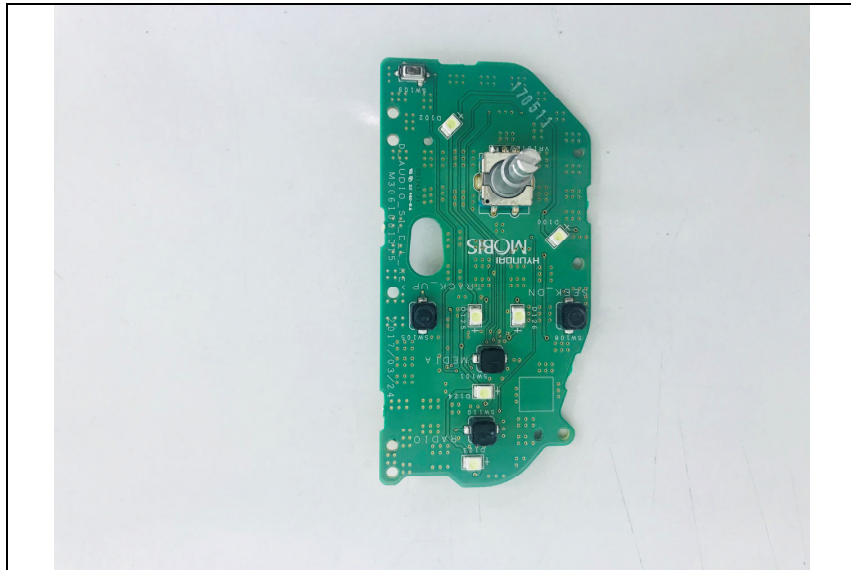
Top view of LCD PCB



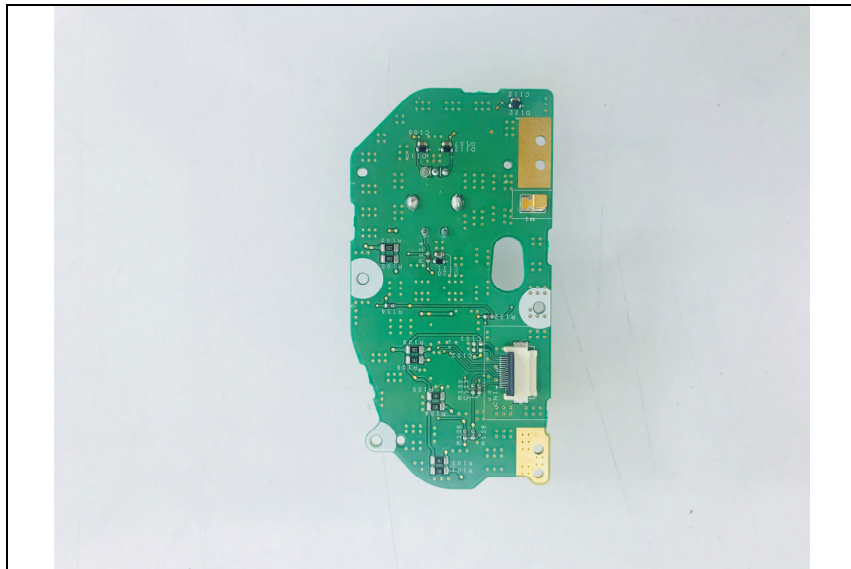
Bottom view of LCD PCB



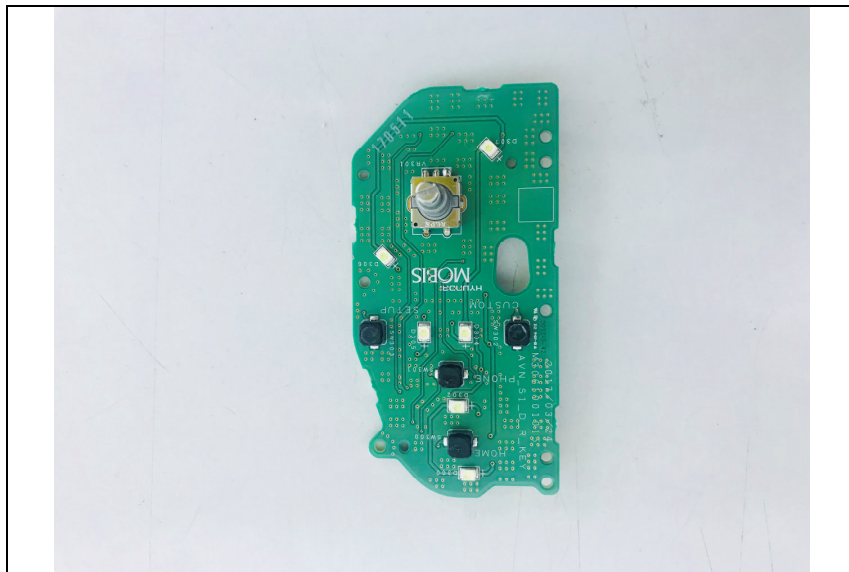
Top view of Sub PCB1



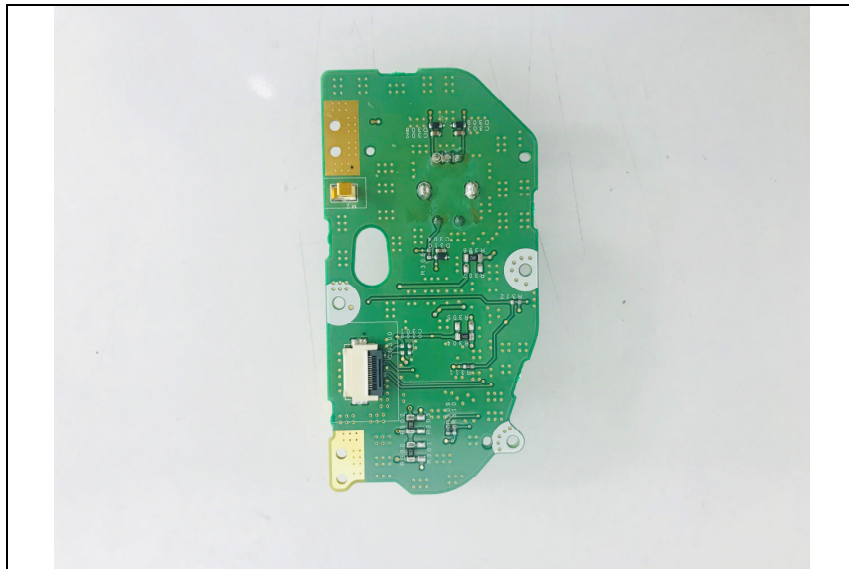
Bottom view of Sub PCB1



Top view of Sub PCB2

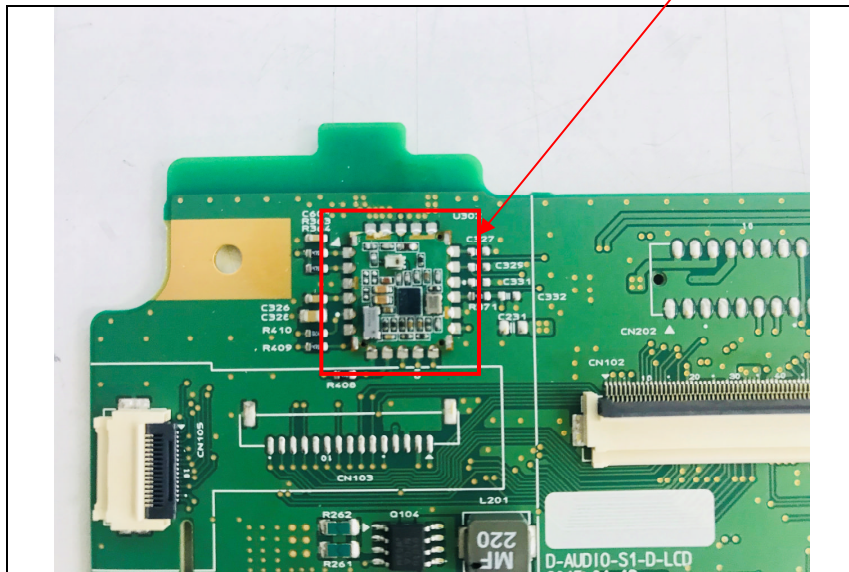


Bottom view of Sub PCB2



View of Bluetooth module

BT module



View of Bluetooth antenna

Dielectric Chip Antenna

