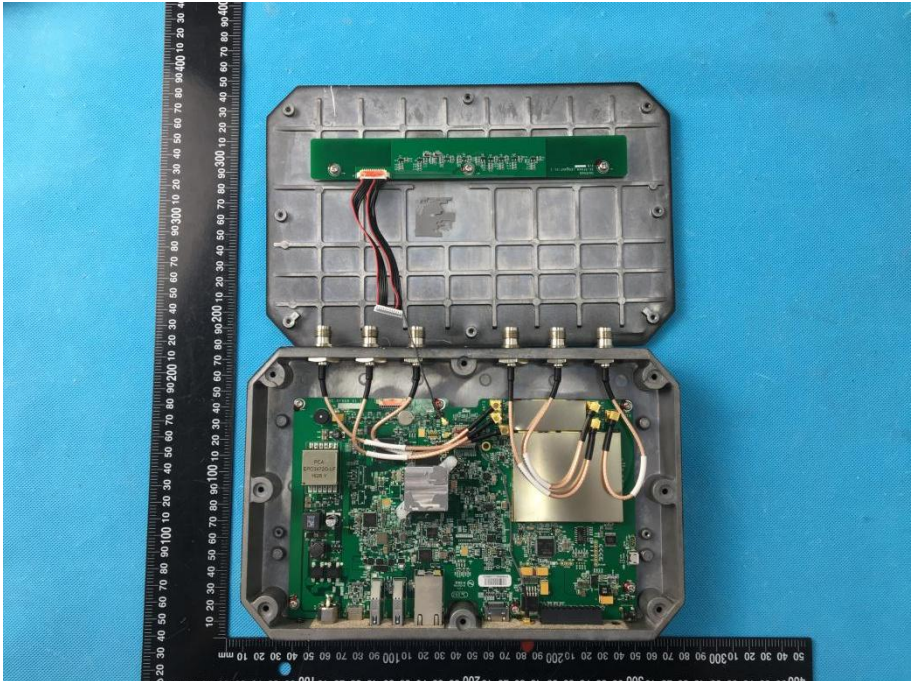
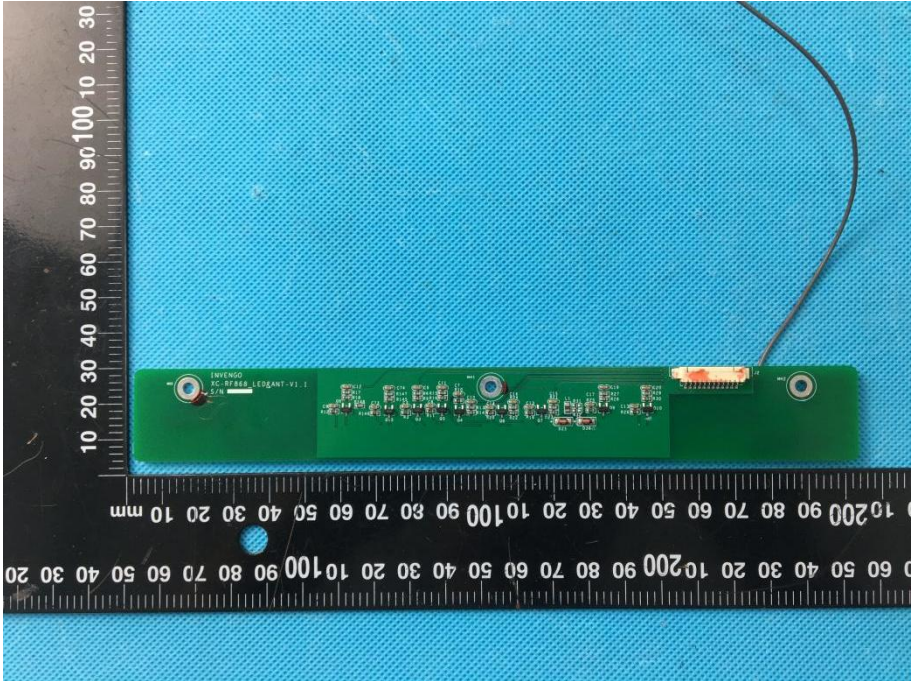
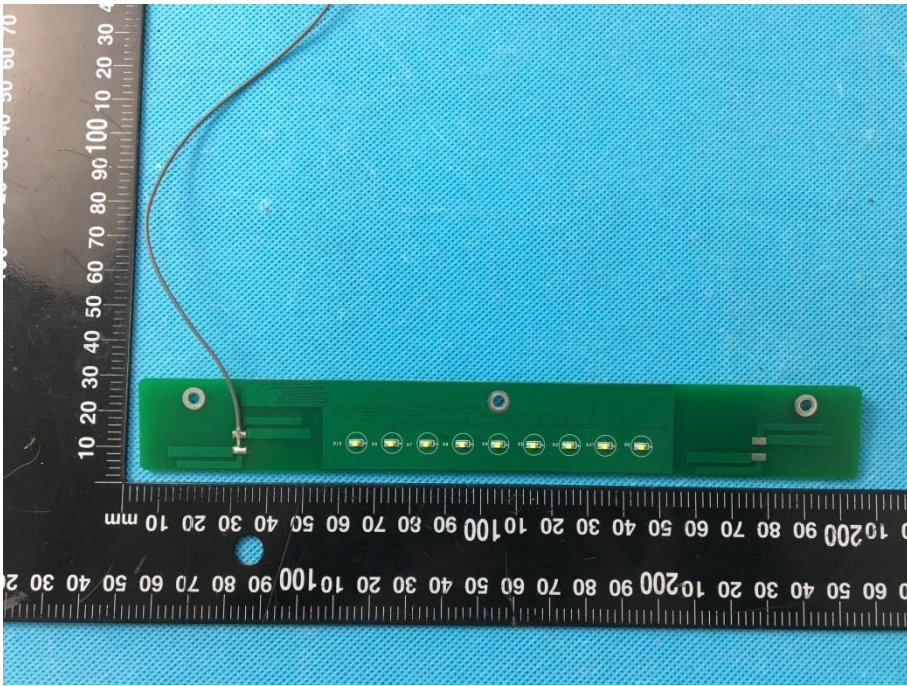

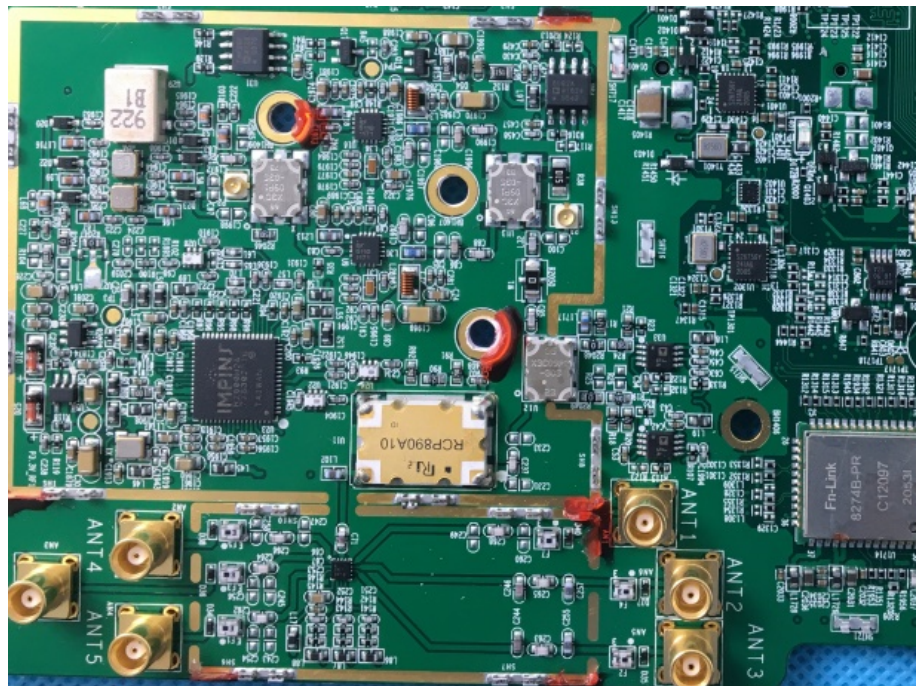


EXHIBIT 3 - EUT INTERNAL PHOTOGRAPHS

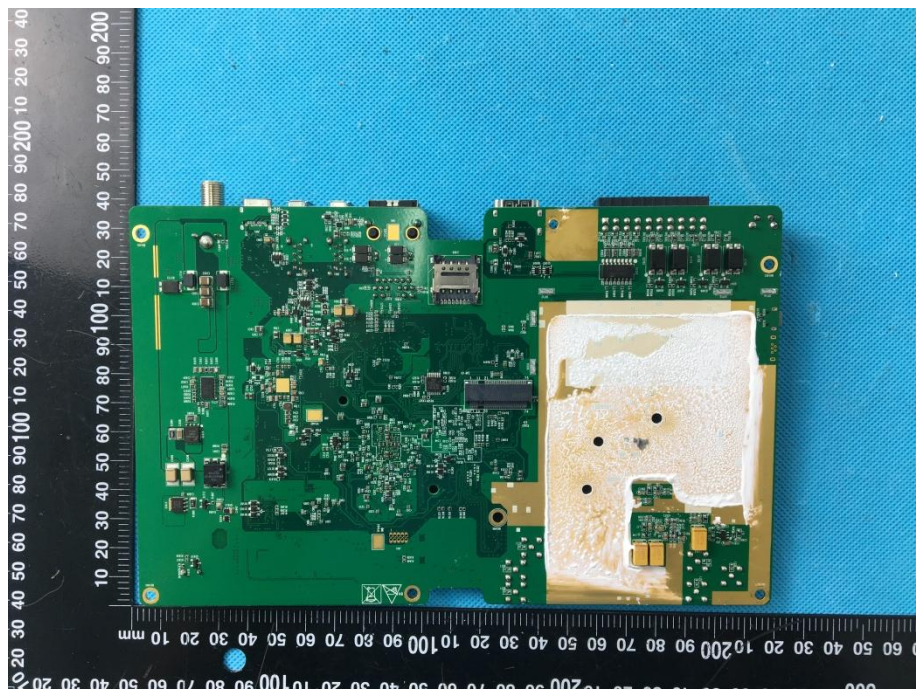
<p>EUT Housing and Board View 1</p>	 A photograph showing the internal components of an EUT (Electronic Under Test) housed in a grey plastic enclosure. The enclosure is open, revealing a green printed circuit board (PCB) populated with various electronic components, including a large silver heat sink. Several cables are connected to the board. A black ruler is placed vertically to the left of the enclosure for scale, showing measurements in millimeters.
<p>Solder Board-Component View 1</p>	 A close-up photograph of a green PCB component, likely a soldered board component, resting on a blue textured surface. The component is a small, rectangular board with various electronic components and a connector. A black ruler is placed horizontally below the component for scale, showing measurements in millimeters.

<p style="text-align: center;">Solder Board-Component View 2</p>	 A photograph of a green printed circuit board (PCB) component, likely a solder mask or a small board, placed on a blue textured surface. The board is rectangular and features several circular solder pads and a small component on the left side. A black ruler is positioned vertically to the left of the board, showing measurements in millimeters. The ruler markings are visible from 0 to 100 mm.
<p style="text-align: center;">Solder Board-Component View 3</p>	 A photograph of a larger green PCB component, densely populated with various electronic components such as integrated circuits, capacitors, and connectors. The board is placed on a blue textured surface. A black ruler is positioned vertically to the left of the board, showing measurements in millimeters. The ruler markings are visible from 0 to 100 mm.

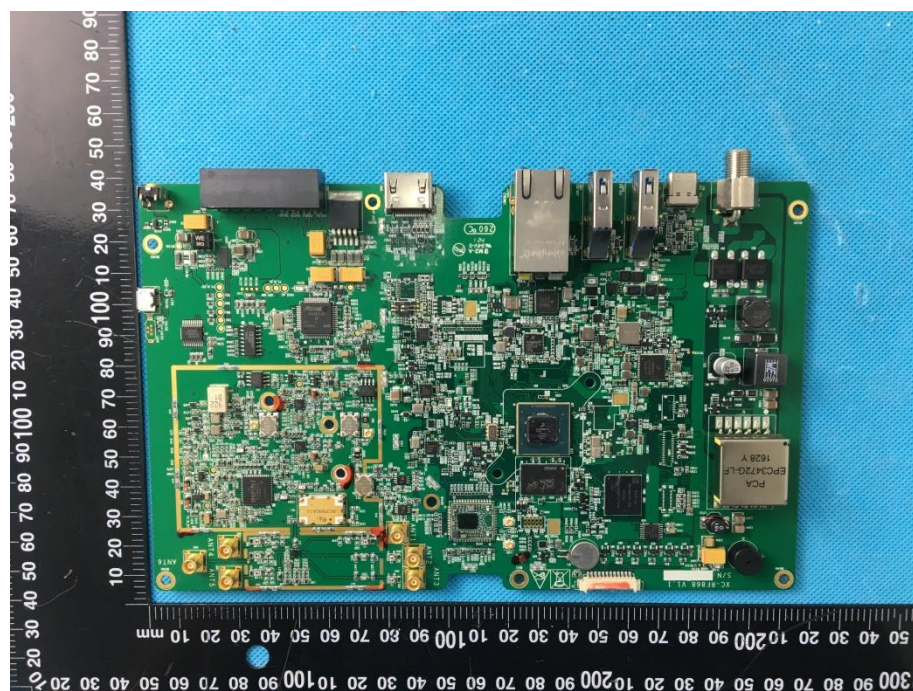
Solder
Board-Component View
4



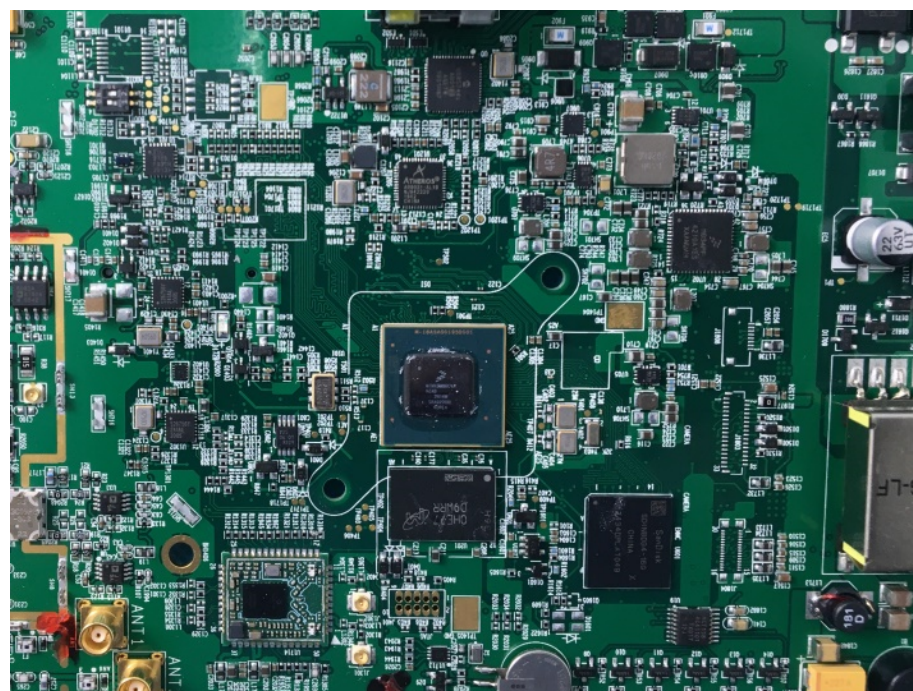
Solder
Board-Component View
5

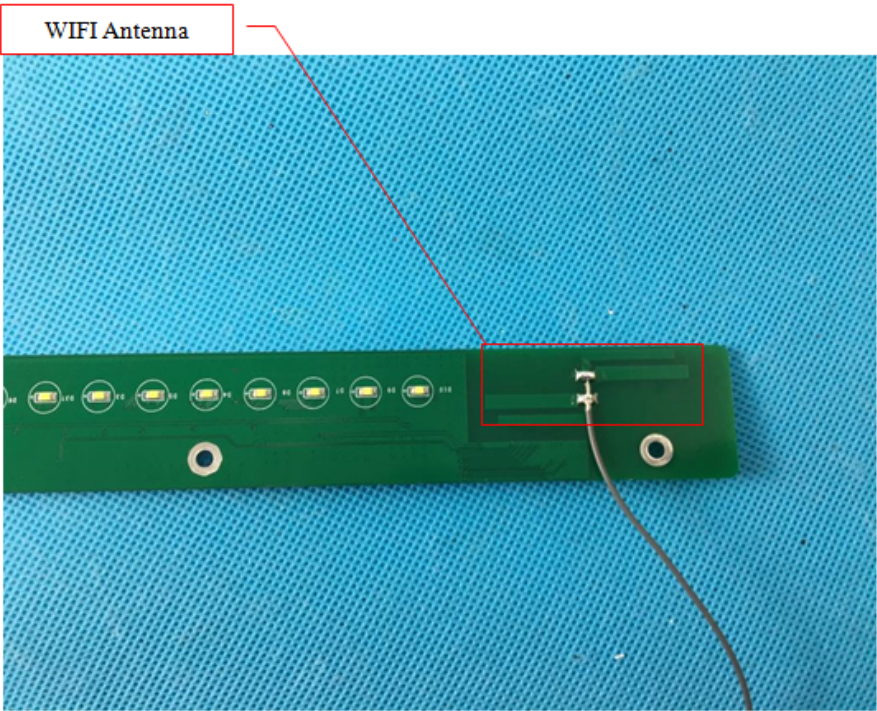
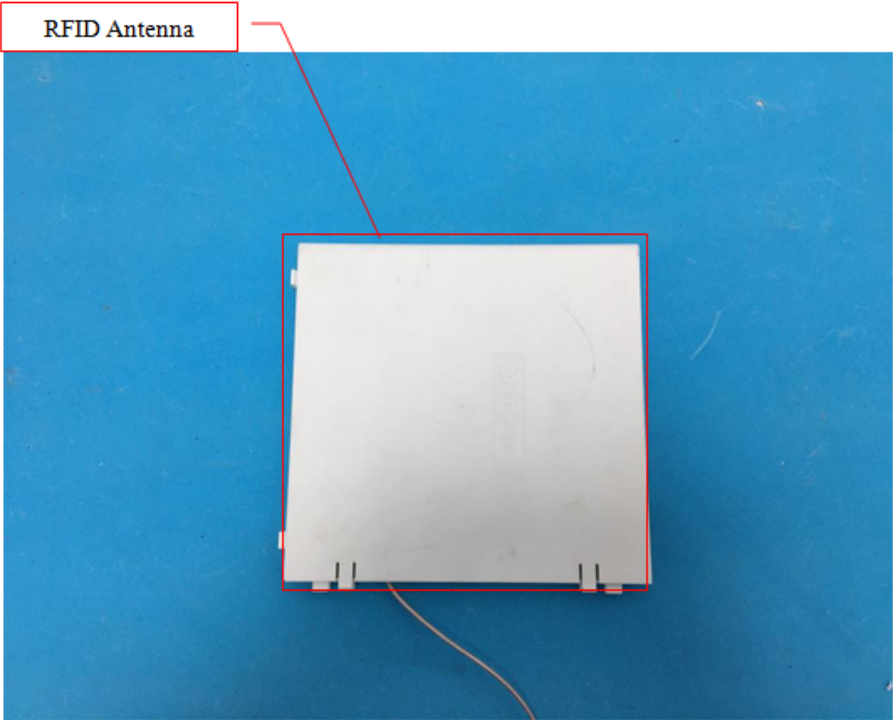


Solder
Board-Component View
6



Solder
Board-Component View
7



<p>Antenna View 1</p>	 <p>WIFI Antenna</p> <p>This image shows a green printed circuit board (PCB) with a WiFi antenna. The antenna is a small, rectangular component with a thin wire extending from it. The PCB also features several small, circular LEDs and two circular mounting holes. A red box highlights the WiFi antenna, and a red line points to a label 'WIFI Antenna' in the top left corner of the image.</p>
<p>Antenna View 2</p>	 <p>RFID Antenna</p> <p>This image shows a white, square RFID antenna. The antenna is a flat, rectangular component with a thin wire extending from it. The PCB also features several small, circular LEDs and two circular mounting holes. A red box highlights the RFID antenna, and a red line points to a label 'RFID Antenna' in the top left corner of the image.</p>