

Applicant Name: SecureAlert Inc
Applicant Address: 150 W. Civic Center Drive, Suite 400, Sandy, Utah 84070
Project Number: SECB-SAR-5594
Test/Analysis Date: May 2011
FCC ID: TPO-OTD36


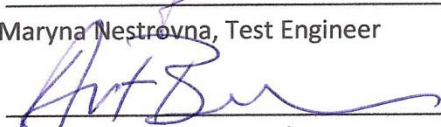
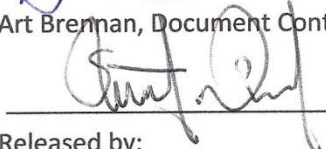


DUT Type	Tracking device with cellular radio and GPS
Antenna Type	Internal
Project Name	ReliAlert
Version Number	3.6
Received Status	Functional final design
DUT Serial Number	100702
Experimental/Compliance	Compliance
Tx Frequency	Cellular 850 and PCS 1900 (GSM and GPRS)
Max Tx Power	33 dbm / 30 dbm
Conservative Averaged SAR (RF Exposure)	850 Channel 128 824MHz GPRS 2 Slots 1g= 1.255 W/kg Extrapolated to 33 dB = 1.305 W/kg 1900 Channel 810 1910MHz GPRS 2 Slots 1g= 0.135 W/kg Extrapolated to 30dB = 0.157 W/kg

This report shall not be reproduced, except in full, without written approval of APREL
 Results relate only to the items tested.

We the undersigned of APREL, located at 303 Terry Fox Dr., Ottawa, Ontario, Canada, K2K 3J1, on the date indicated attest that the Device Under Test as detailed within this test report has been tested and found to be compliant with the Uncontrolled Environment RF exposure rules and regulations as defined by the methodologies, procedures, and standards as described in this document.
 Signed this day 19th May 2011.

NOTE: Below is an electronic copy. Each report is signed upon release


 Maryna Nestrovna, Test Engineer

 Art Brennan, Document Control

 Released by:
 Stuart Nicol, Director Product Development

Project Number: 5594 V2
FCC ID: TPO-OTD36
Table of Contents

1.0	Introduction.....	3
2.0	Applicable Documents.....	6
3.0	ALSAS-10U System Description.....	7
3.1	Applications	8
3.2	Visualisation and reporting	8
3.3	Field scans	8
3.3.1	Area Scans.....	8
3.3.2	Zoom Scan (Cube Scan Averaging)	9
3.4	Operator settings	9
3.5	ALSAS-10U Interpolation and Extrapolation Uncertainty	9
4.0	ALSAS-10U Hardware	10
4.1	Isotropic E-Field Probe	10
4.2	Isotropic E-Field Probe Specification	11
4.3	Boundary Detection Unit and Probe Mounting Device	11
4.4	Daq-Paq (Analog to Digital Electronics)	11
4.5	Axis Articulated Robot.....	12
4.6	ALSAS Universal Workstation	12
4.7	Universal Device Positioner	13
4.8	Phantom Types.....	14
4.8.1	APREL SAM Phantoms	14
4.8.2	APREL Universal Phantom	15
4.9	Validation Dipoles	16
5.0	Tissue Simulation Fluid	17
5.1	Tissue Calibration Procedure Using a Coaxial Probe	18
5.2	Tissue Calibration Results	18
6.0	System Validation	19
6.1	Experimental Results Summary	21
6.2	SAR Measurement Procedure.....	21
6.3	SAR Exposure Limits.....	21
6.4	Equipment List/Duty Cycle.....	22
6.5	SAR Measurement Results.....	23
	Appendix A SAR Plots	

Revision History

Originated	May 19, 2011
Revised	May 26, June 17, 20, 23



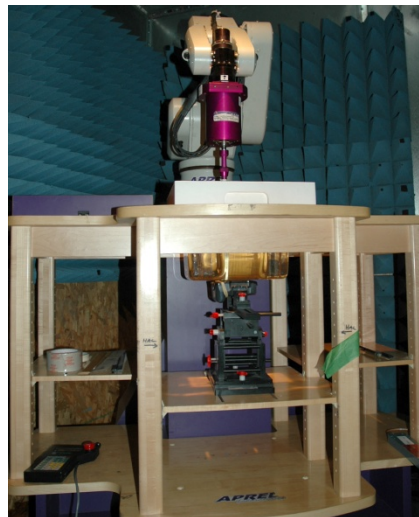
Project Number: 5594 V2
FCC ID: TPO-OTD36

1.0 Introduction

Tests were conducted at APREL within the SAR facility to establish the conservative exposure value associated with the Device Under Test as detailed within this test report. Assessments were made in line with the guidelines contained in the reference documents. The method used for assessment was the ALSAS-10U (APREL SAR Assessment System-10 Universal). All practices along with standards and scientific methodologies which have been utilized during the assessment of the Device Under Test (DUT) are detailed within this test report.

APREL employees currently hold senior and executive positions in multiple international standards organizations, including IEC, IEEE, among others, and work closely with several national regulators, including the FCC and IC. APREL currently hold the chair for the Canadian National committee to IEC to which we have a liaison with CENELEC, and informal links to other national and international standards organizations. APREL are certified to ISO/IEC-17025 by Standards Council Canada to conduct SAR measurements.

1.2 Device Description



The device tested is a tracking device which utilises a cellular radio and GPS. The device is designed to be worn on an ankle (limb) and not to be used in close proximity to the head. All tests conducted were done using body tissue. The device was assessed using standard single slot GSM protocols and 2 slot GPRS functions at a maximum transmit power.

It was found that the conservative SAR was measured on the body phantom and that using a curved surface e.g. neck region of SAM (to achieve greater coupling of the curved surface of the device) yielded a SAR value less than 20% of the worst case measured using a standard body phantom. The purpose of this additional test is to ensure that the most conservative SAR was measured using the best possible practice based on measurement standards.

It has been found that the SAR presented in this report is the most conservative using the body phantom test method.



Project Number: 5594 V2

FCC ID: TPO-OTD36

1.3 Antenna Locations

Antenna is a flex
type.



Antenna located left hand side

Antenna Locations



Project Number: 5594 V2
FCC ID: TPO-OTD36

1.4 Additional SAR Measurements

Additional SAR measurements were conducted for GPRS and on the SAM phantom curvature. Additional tests were conducted for the European bands which are not presented in this SAR report.

Mode	Channel/Fx	Position/Phantom	SAR
Cellular 850 GPRS	251/849MHz	Body Phantom	1.255
Cellular 850 GPRS	251/849MHz	SAM Phantom	0.874
PCS GPRS	512/1850MHz	Body Phantom	0.135
PCS GPRS	512/1850MHz	SAM Phantom	0.104

The purpose of this additional test is to ensure that the most conservative SAR was measured using the best possible practice based on measurement standards.

It has been found that the SAR presented in this report is the most conservative using the body phantom test method.



2.0 Applicable Documents

ANSI/IEEE C95.1-1999, IEEE Standard for Safety Levels with Respect to Human Exposure to Radio Frequency Electromagnetic Fields, 3 kHz to 300 GHz.

ANSI/IEEE C95.3-1992, IEEE Recommended Practice for the Measurement of Potentially Hazardous Electromagnetic Fields – RF and Microwave.

OET Bulletin 65 (Edition 97-01) Supplement C (Edition 01-01), “Evaluating Compliance with FCC Guidelines for Human Exposure to Radio Frequency Electromagnetic Fields”.

OET Laboratory Division FCC (December 2007) SAR Evaluation Considerations for Laptop Computers with Antennas Built –in on Display Screens

OET Laboratory Division FCC (May 2007 Revised) SAR Measurement Procedures for 802.11abg Transmitters

OET Laboratory Division FCC (October 2006) SAR Measurement Procedures for 3-6GHz

IEEE Recommended Practice for Determining the Peak Spatial-Average Specific Absorption Rate (SAR) in the Human Head from Wireless Communications Devices: Measurement Techniques

ICNIRP Guidelines “GUIDELINES FOR LIMITING EXPOSURE TO TIME-VARYING ELECTRIC, MAGNETIC, AND ELECTROMAGNETIC FIELDS (UP TO 300 GHz)”

IEC-62209 “Human exposure to radio frequency fields from hand-held and body-mounted wireless communication devices – Human models, instrumentation, and procedures”

Part 1: “Procedure to determine the Specific Absorption Rate (SAR) for hand-held devices used in close proximity of the ear (frequency range of 300 MHz to 3 GHz)”

IEC-62209 “Human exposure to radio frequency fields from hand-held and body-mounted wireless communication devices – Human models, instrumentation, and procedures”

Part 2 *Draft*: “Procedure to determine the Specific Absorption Rate (SAR) for hand-held devices used in close proximity of the ear (frequency range of 30 MHz to 6 GHz)”

OET Laboratory Division FCC Mobile and Portable Device RF Exposure Equipment Authorization Procedures KDB -447498

RSS 102 Radio Frequency (RF) Exposure Compliance of Radiocommunication Apparatus (All Frequency Bands)



Project Number: 5594 V2
FCC ID: TPO-OTD36

3.0 ALSAS-10U System Description

APREL ALSAS-10-U (APREL SAR Assessment System) is fully optimized for the dosimetric evaluation of a broad range of wireless transceivers and antennas. It is an easy-to-use development and compliance tool, which provides excellent application flexibility. Developed in line with the latest methodologies it is fully compliant with the technical and scientific requirements of IEEE 1528, IEC 62212/62209, CENELEC, ARIB, ACA, and the Federal Communications Commission. The system comprises of a six axes articulated robot which utilizes a dedicated controller.

ALSAS-10U has been developed with a strong engineering focus, and with custom modular software/hardware for the broadest range of applications, including dosimetry research and measurements in various Phantoms – SAM Phantom, UniPhantom™ Universal Phantom, Universal Flat Phantom and others.

Free space E-Field measurements of mobile devices and base station antennas can also be executed using ALSAS. With the current ALSAS configuration, several phantoms and setups can be arranged around the system – and since the phantoms are designed to be light and easy to move for interchanging between test frequencies.

ALSAS-10U has been developed using the latest methodologies and FDTD modeling to provide a platform which is repeatable with minimum uncertainty.

The ongoing commitment from APREL to the field of Dosimetric research and development will ensure that the ALSAS-10-U measurement system can easily be upgraded to accommodate changes to wireless technologies, and scientific methodologies.



Project Number: 5594 V2
FCC ID: TPO-OTD36

3.1 Applications

Predefined measurement procedures compliant with the guidelines of CENELEC, IEEE, IEC, FCC, etc are utilized during the assessment for the device. Automatic detection for all SAR maxima are embedded within the core architecture for the system, ensuring that peak locations used for centering the zoom scan are within a 1mm resolution and a 0.05mm repeatable position. A little less than 10 min per device position measurement completion time, (depending of DUT size) ensures minimum power drift during the assessment. No user interaction is required during the measurement processes: area scan, evaluation of cube maximal search, fine cube measurements and device power drift measurement. System operation range currently available up-to 6 GHz in simulated tissue.

ALSAS-10U can be used for all analog and digital devices, including wideband, spread spectrum and pulsed systems, etc.: handsets, handhelds, wireless data, electronic article surveillance, accessories, wireless access points, WLAN, cordless, radio, etc.

3.2 Visualization and reporting

2/3D isoline distribution, scatter graphics, polar graphics, and vector reproduction. Device representation and phantom visualization in 2/3D graphics with measurement data overlaid (in color plot format). Freely configurable output graphic formats with automatic title, data and legend generation which includes all relevant information relating to the measurement process. Uncertainty analysis and budget calculated and reported drawing on active device drift assessment, and tissue simulation values.

3.3 Field scans

ALSAS-10U can provide multiple scan types including Measurements along lines (X, Y, Z), multiple planes, curved surfaces (normalize probe to surface), volumes in free space or restricted volumes (phantoms). Cube measurements with surface extrapolation and spatial SAR evaluation for 1g and/or 10g. Time measurements (source power drift). Probe rotation measurements (isotropy) and many others in line with the requirements of any given standard or procedure.

3.3.1 Area Scans

Area scans are defined prior to the measurement process being executed with a user defined variable spacing between each measurement point (integral) allowing low uncertainty measurements to be conducted. Scans defined for FCC applications utilize a 10mm^2 step integral, with 1mm interpolation used to locate the peak SAR area used for zoom scan assessments.

A maximum area scan size is set at 280mm x 200mm which can be changed to a smaller size dependent on the filed distribution of the device under test. The area scan size is documented within the SAR report which is delivered by the SAR system software.

Where the system identifies multiple SAR peaks (which are within 2dB of each peak value) the system will provide the user with the option of assessing each peak location individually for zoom scan averaging.



Project Number: 5594 V2
FCC ID: TPO-OTD36

3.3.2 Zoom Scan (Cube Scan Averaging)

The averaging zoom scan volume utilized in the ALSAS-10U software is in the shape of a cube and the side dimension of a 1 g or 10 g mass is dependent on the density of the liquid representing the simulated tissue. A density of 1 000 kg/m³ is used to represent the head and body tissue density and not the phantom liquid density, in order to be consistent with the definition of the liquid dielectric properties, i.e. the side length of the 1 g cube is 10mm, with the side length of the 10 g cube 21,5mm.

When the cube intersects with the surface of the phantom, it is oriented so that 3 vertices touch the surface of the shell or the centre of a face is tangential to the surface. The face of the cube closest to the surface is modified in order to conform to the tangential surface. The centre of the cube and the tangential angle associated defines each face of the cube so that all transitional points follow this tangential angle.

The zoom scan integer steps can be user defined so as to reduce uncertainty, but normal practice for typical test applications (including FCC) utilize a physical step of 5x5x9 (8mmx8mmx4mm Fx <3GHz) and 9x9x17 (4mmx4mmx2mm Fx>3GHz) providing a volume of 32mm in the X & Y axis, and 32mm in the Z axis. All points remain tangential to the surface by utilizing the normalize (probe tilt) feature so as to reduce measurement uncertainty.

3.4 Operator settings

Multiple access levels (password protected) for parametric modifications/test scenarios in line with selected standards, including the FCC. Any number of predefined settings (probes, phantoms, liquids, devices, measurement procedures, etc.) can be stored for future use and repeatable assessments.

3.5 ALSAS-10U Interpolation and Extrapolation Uncertainty

The overall uncertainty for the methodology and algorithms that are used during the SAR calculation was evaluated using the data from IEEE 1528 based on the example f3 algorithm:

$$f_3(x, y, z) = A \frac{a^2}{\frac{a^2}{4} + x'^2 + y'^2} \cdot \left(e^{-\frac{2z}{a}} + \frac{a^2}{2(a + 2z)^2} \right)$$



Project Number: 5594 V2

FCC ID: TPO-OTD36

4.0 ALSAS-10U Hardware

The ALSAS-10U comprises of hardware designed exclusively by APREL based on methodologies presented in IEEE 1528, IEC 62212, CENELEC and FCC supplement C OET bulletin 65.

4.1 Isotropic E-Field Probe

The isotropic E-Field probe used by APREL, has been fully calibrated and assessed for isotropicity, and boundary effect within a controlled environment. Depending on the frequency for which the probe is calibrated the method utilized for calibration will change. APREL utilize a number of methods for calibrating probes, and these are outlined in the table below.

Calibration Frequency (MHz)	Air Calibration	Tissue Calibration
300	TEM Cell	Temperature
450	TEM Cell	Temperature
835	TEM Cell	Temperature
900	TEM Cell	Temperature
1800	TEM Cell	Temperature
1900	TEM Cell	Temperature
2450	Waveguide	Waveguide
5200	Waveguide	Waveguide
5600	Waveguide	Waveguide
5800	Waveguide	Waveguide

The APREL E-Field probe utilizes a triangular sensor arrangement as detailed in the diagram below.



SAR is assessed with a calibrated probe which moves at a default height of 1.4mm from the centre of the diode, which is mounted to the sensor, to the phantom surface (in the Z Axis). The 1.4mm offset height has been selected so as to minimize any resultant boundary effect due to the probe being in close proximity to the phantom surface.

The following algorithm is an example of the function used by the system for linearization of the output from the probe when measuring complex modulation schemes.

$$V_i = U_i + U_i^2 \cdot \frac{cf}{dcp_i}$$



Project Number: 5594 V2
FCC ID: TPO-OTD36

4.2 Isotropic E-Field Probe Specification

Calibration in Air	Frequency Dependent Below 2GHz Calibration in air performed in a TEM Cell Above 2GHz Calibration in air performed in waveguide
Sensitivity	0.60 $\mu\text{V}/(\text{V}/\text{m})^2$ to 1.25 $\mu\text{V}/(\text{V}/\text{m})^2$
Dynamic Range	0.01 W/kg to 100 W/kg
Isotropic Response	Better than 0.2dB in air Better than 0.05dB in tissue
Diode Compression Point (DCP)	Calibrated for Specific Frequency typically 95mV +/- 10%
Probe Tip Radius	<2.9mm
Sensor Offset	1.06 (+/-0.02mm)
Probe Length	290mm
Video Bandwidth	@ 500 Hz: 1 dB @ 1.02 KHz: 3 dB
Boundary Effect	Less than 2% for distances greater than 1.4mm
Spatial Resolution	Better than 1mm
Probe Diameter	Less than 2.8mm

4.3 Boundary Detection Unit and Probe Mounting Device

ALSAS-10U incorporates a boundary detection unit with a sensitivity of 0.05mm for detecting all types of surfaces. The robust design allows for detection during probe tilt (probe normalize) exercises, and utilizes a second stage emergency stop. The signal electronics are fed directly into the robot controller for high accuracy surface detection in lateral and axial detection modes (X, Y, & Z).

The probe is mounted directly onto the Boundary Detection unit for accurate tooling and displacement calculations controlled by the robot kinematics. The probe is connect to an isolated probe interconnect where the output stage of the probe is fed directly into the amplifier stage of the Daq-Paq.

4.4 Daq-Paq (Analog to Digital Electronics)

ALSAS-10U incorporates a fully calibrated Daq-Paq (analog to digital conversion system) which has a 4 channel input stage, sent into an amplifier module. The input signal is amplified accordingly so as to offer a dynamic range from 5 μV to 800mV. Integration of the fields measured is carried out at board level utilizing a Co-Processor which then sends the measured fields down into the main computational module in digitized form via an RS232 communications port. Probe linearization and duty cycle compensation is carried out within the main Daq-Paq module.

ADC	16 Bit
Amplifier Range	30 μV to +200 mV (16 bit resolution: 4 μV , 400mV)
Field Integration	Local Co-Processor utilizing proprietary integration algorithms
Number of Input Channels	4 in total 3 dedicated and 1 spare
Communication	Packet data via RS232



Project Number: 5594 V2
FCC ID: TPO-OTD36

4.5 Axis Articulated Robot



ALSAS-10U utilizes a six axis articulated robot, which is controlled using a Pentium based real-time movement controller. The movement kinematics engine utilizes proprietary (Thermo CRS) interpolation and extrapolation algorithms, which allow full freedom of movement for each of the six joints within the working envelope. Utilization of joint 6 allows for full probe rotation with a tolerance better than 0.05mm around the central axis.

Robot/Controller Manufacturer	Thermo CRS
Number of Axis	Six independently controlled axis
Positioning Repeatability	0.05mm
Controller Type	Single phase Pentium based C500C
Robot Reach	710mm
Communication	RS232 and LAN compatible

4.6 ALSAS Universal Workstation

ALSAS Universal workstation was developed with a strong engineering focus taking into consideration flexibility and engineering needs, and the necessity to have integrated system which will allow for repeatability and fast adaptability. ALSAS workstation technology is stable and robust in structure, but at the same time flexible so that users can do calibration, testing and measurements using different types of phantoms with one set up, which significantly speeds up the measurement process.

The workstation incorporates a modular structure which can be easily adapted to specific engineering requirements and needs. Phantoms which are self contained modular units are easily located, removable and swappable. Three fully configurable shelves allow for setting up of a test device in a way which can either utilize the APREL device positioner, or custom designed units. When using the modular shelf for positioning of a device, additional loading characteristics have been avoided.

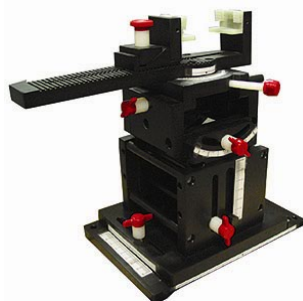
The workstation has been constructed entirely out of composite wood and Canadian maple, with all metallic fasteners kept at a compliant distance from the Device under test.



Project Number: 5594 V2

FCC ID: TPO-OTD36

4.7 Universal Device Positioner



The APREL universal device positioner has been developed so as to allow complete freedom of movement of the DUT. Developed to hold a DUT in a free-space scenario any additional loading attributable to the material used in the construction of the positioner has been eliminated. Repeatability has been enhanced through the linear scales which form the design used to indicate positioning for any given test scenario in all major axes. A 15° tilt indicator has been included for the of aid cheek to tilt movements for head SAR analysis. Overall uncertainty for measurements have been reduced due to the design of the Universal device positioner, which allows positioning of a device in as near to a free-space scenario as possible, and by providing the means for complete repeatability.



Length	201mm
Width	140mm
Height	222mm
Weight	1.95kg
Number of Axis	6 axis freedom of movement
Translation Along MB Line	+/- 76.2mm
Translation Along NF Line	+/- 38.1mm
Translation Along Z Axis	+/- 25.4mm (expandable to 500mm)
Rotation Around MB Line (yaw)	+/- 10°
Rotation Around NF Line (pitch)	+/- 30°
Rotation Around Z Axis (roll)	360° full circle
Minimum Grip Range	0mm
Maximum Grip	152mm
Maximum Distance from Device to Positioner Material	40mm
Tilt Movement	Full movement with predefined 15° guide



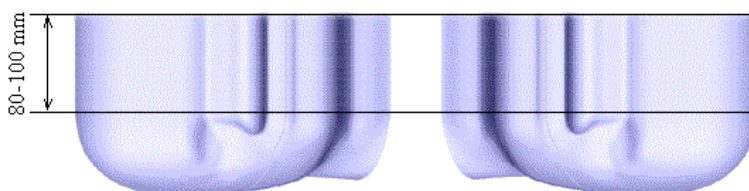
Project Number: 5594 V2
FCC ID: TPO-OTD36

4.8 Phantom Types

The ALSAS-10U has been designed so as to allow the integration of multiple phantom types. This includes but is not limited to the APREL SAM Phantoms fully compliant with IEEE 1528, Universal Phantom, and Universal Flat.

4.8.1 APREL SAM Phantoms

The APREL SAM phantoms have been designed so as to aid repeatability and positioning for any DUT. Developed using the IEEE SAM CAD file they are fully compliant with the requirements for both IEEE 1528 and FCC Supplement C. Both the left and right SAM phantoms are interchangeable, transparent and include the IEEE 1528 grid with visible NF and MB lines.

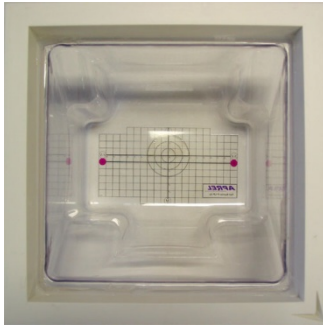


Compliant Standards	IEEE-1528, IEC 62212, CENELEC, and others
Manufacturing Process	Injection molded
Material	Composite urethane
Manufacturing Tolerance	+/- 0.2mm
Frame Material	Corian
Tissue Simulation Volume	7 ltr with 15cm tissue
Thickness	2mm nominally 6mm at NF/MB intersection
Loss Tangent	<0.05
Relative Permittivity	<5
Resistant to Solvents	Resistant to all solvents detailed in IEEE 1528
Load Deflection	<1mm with sugar water compositions



Project Number: 5594 V2
FCC ID: TPO-OTD36

4.8.2 APREL Universal Phantom (body)



The APREL Universal Phantom has been developed as an engineering tool for both compliance and development. It is also used on the ALSAS-10U as a system validation phantom. The unique design allows repeatable measurements for all devices, including handsets, PDA units, laptop computers, and validation dipoles. The APREL Universal Phantom has been fully validated both experimentally from 800MHz to 6GHz and numerically using XFDTD numerical software. The shell thickness is 2mm overall, with a 4mm spacer located at the NF/MB intersection providing an overall thickness of 6mm in line with the requirements of IEEE-1528. The design allows for fast and accurate measurements, of handsets, by allowing the conservative SAR to be evaluated at on frequency for both left and right head experiments in one measurement. The phantom is surrounded by a Corian frame, which adds

additional support and load bearing characteristics.

Compliant Standards	IEEE-1528, IEC 62212, CENELEC, and others
Frequency Range	800MHz to 6GHz
Material	Vivac
Manufacturing Tolerance	+/- 0.2mm
Frame Material	Corian
Tissue Simulation Volume	8 ltr with 15cm tissue
Thickness	2mm nominally 6mm at NF/MB intersection
Loss Tangent	<0.05
Relative Permittivity	<5
Resistant to Solvents	Resistant to all solvents detailed in IEEE 1528
Load Deflection	<1% Length with sugar water compositions
Dimensions	Length 220mm x breadth 170mm

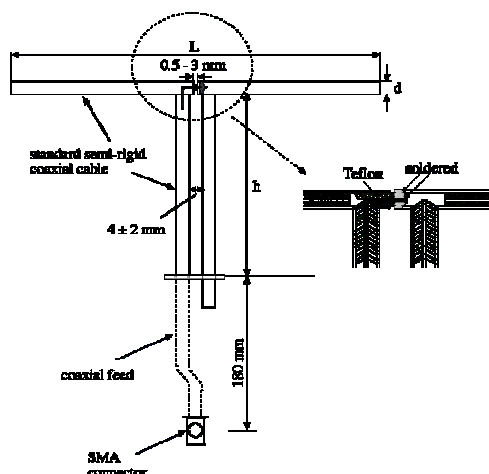


Project Number: 5594 V2
FCC ID: TPO-OTD36

4.9 Validation Dipoles

APREL utilize dipoles based on the IEEE-1528 standard, and have ensured that they comply with mechanical and electrical specifications in line with the requirements of both IEEE and FCC Supplement C. the table below provides details for the mechanical and electrical specifications for the dipoles used by APREL.

Body validation target numbers have been derived using XFDTD numerical software, and validated experimentally.



APREL have developed high frequency dipoles based on current scientific research carried both experimentally and numerically here at the APREL site. Mechanical and electrical parameters for the dipoles have been established using experimental and numerical techniques, and target SAR values have been established following IEC methodologies. The results of the experimental and numerical research have been published and released for peer review.

Frequency (MHz)	L (mm)	h (mm)	d (mm)
300	396.0	250.0	6.0
450	270.0	166.7	6.0
835	161.0	89.8	3.6
900	149.0	83.3	3.6
1450	89.1	51.7	3.6
1800	72.0	41.7	3.6
1900	68.0	39.5	3.6
2000	64.5	37.5	3.6
2450	51.5	30.4	3.6
2600	49.0	30	3.6
3000	41.5	25.0	3.6
5200	23.6	14	3.6
5800	21.6	13	3.6
5190-5900	23.1	20.7	3.6



Project Number: 5594 V2
FCC ID: TPO-OTD36

5.0 Tissue Simulation Fluid

Tissue simulation fluids in the frequency range of 450MHz to 2450MHz are based on IEEE-1528 and FCC Supplement C guidelines. All fluids meet the dielectric specifications as outlined in the above standards (within allowable tolerances) and are calibrated on a regular basis, to maintain stability. The recipes used along with the dielectric target values are included in the table below.

Ingredients (% Weight)	450 MHz Head	835 MHz Head	915 MHz Head	1900 MHz Head	2450 MHz Head
Water	38.56	41.45	41.05	54.9	62.7
Salt	3.95	1.45	1.35	0.18	0.5
Sugar	56.32	56.0	56.5	x	x
HEC	0.98	1.0	1.0	x	x
Bactericide	0.19	0.1	0.1	0.1	X
Triton-X	X	X	X	X	36.8
DGBE	X	X	X	44.92	x
ϵ^r	43.42	42.54	42.0	39.9	39.8
δ	0.85	0.91	1.0	1.42	1.88

Ingredients (% Weight)	450 MHz Body	835 MHz Body	915 MHz Body	1900 MHz Body	2450 MHz Body
Water	51.16	52.4	56.0	40.4	73.2
Salt	1.49	1.4	0.76	0.5	0.04
Sugar	46.78	45.0	41.76	58.0	X
HEC	0.52	1.0	1.21	1.0	X
Bactericide	0.05	0.1	0.27	0.1	X
Triton-X	X	X	X	X	X
DGBE	X	X	X	X	26.7
ϵ^r	58.0	56.1	56.8	54.0	52.5
δ	0.83	0.95	1.07	1.45	1.95

NOTE. Recipes are based on those presented in FCC Supplement C Page 36.

For frequencies above 2450MHz recipes will be presented as and when requested by a designated body.

Ingredients (% Weight)	2600 MHz Body	5200 MHz Body	5600 MHz Body	5800 MHz Body
Water	69.6	x	x	x
Salt	0.03	x	x	x
Sugar	X	x	x	x
HEC	X	x	x	x
Bactericide	X	x	x	x
Triton-X	X	x	x	x
DGBE	30.37	x	x	x
ϵ^r	52.4	48.9	47.6	48.2
δ	2.15	5.35	5.8	6.00



Project Number: 5594 V2
FCC ID: TPO-OTD36

5.1 Tissue Calibration Procedure Using a Coaxial Probe

The VNA (Vector Network Analyzer) is configured and calibrated for the frequency of the simulated tissue which has to be assessed. The Coaxial probe is then calibrated in line with the tissue frequency using an open, short, and De-Ionized water routine. The sample of simulated tissue is placed into a non-metallic container for use during the calibration. The temperature of the simulated tissue sample is measured. The probe head is then completely immersed in the simulated tissue sample (the probe is held in place using a non metallic probe holder). The simulated tissue sample is then measured to assess the permittivity and conductivity.

5.2 Tissue Calibration Results



Tissue used during the SAR assessment is calibrated prior to use in the measurement process. APREL use the co-axial probe method for all tissue calibration exercises. Tissue which is being used over a period of 24 hours is re-calibrated to ensure that no change to the dielectric properties will affect the SAR measurement process. The table below provides details of the results from the tissue equivalent dielectric calibration. This project was conducted over a period of 6 days and the tissues were calibrated daily to ensure that they met the values presented below.

Calibrated By	Calibration Date	Frequency MHz	Tissue Type	Epsilon (ϵ_r)	Sigma (δ)
Maryna	Daily	835	Body	57.24	0.97
Maryna	Daily	1900	Body	51.12	1.57

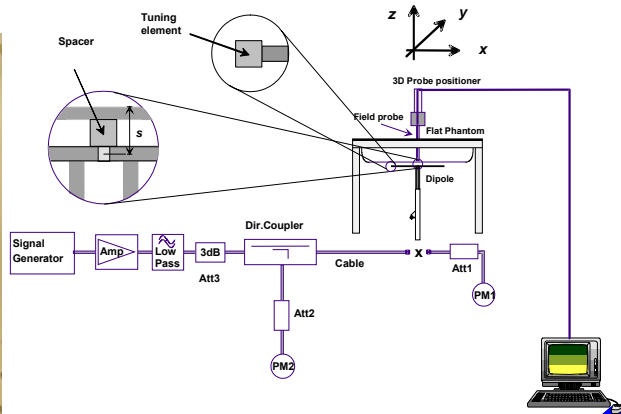
Variation of the tissue was maintained daily to be less than 2%.



Project Number: 5594 V2
FCC ID: TPO-OTD36

6.0 System Validation

ALSAS-10U is fully validated prior to the SAR assessment of the DUT following methodologies presented in IEEE-1528 section 8. The system is validated using tissue which has been calibrated within a 24 hour period. When the measurement process exceeds a 24 hour period a secondary system validation is executed and the results presented within this test report. The graphic plots resulting from the system validation are included in Appendix A SAR plots.



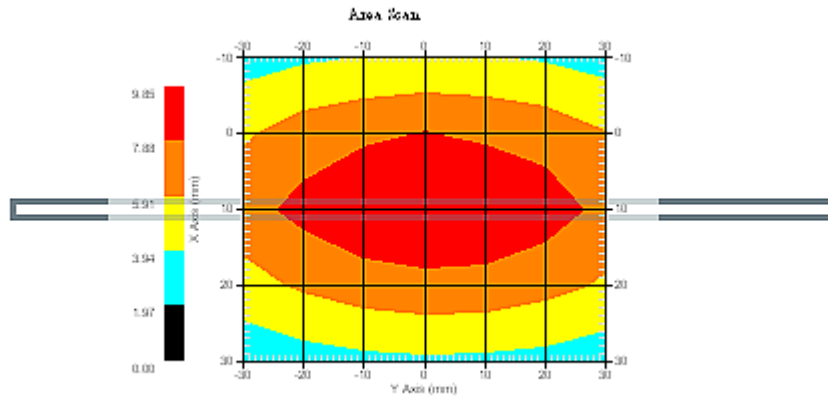
Date	Validation Frequency (MHZ)	Dipole Separation Distance mm	Power W	Dipole	SAR 1g W/kg	Target 1g W/kg
May 14/11	835	15mm	1	835 Body	9.177	9.981
May 14/11	1900	10mm	1	1900 Body	39.873	38.126
May 18/11	835	15mm	1	835 Body	9.650	9.981
May 18/11	1900	10mm	1	1900Body	39.654	38.126

Currently no standards are in place for validating a system while using body tissue. System validation and values are based on current guidance coming from the FCC and utilize the APREL dipoles for frequencies above 5GHz. This project was conducted over a period of 4 working days and when necessary system validations were repeated when the test completion was greater than a 24 hour period. Where the system validation was greater than 2% from those presented above the tissue was then reassessed and brought back to within 2% of initial dielectric values to show consistency throughout the measurement cycle.

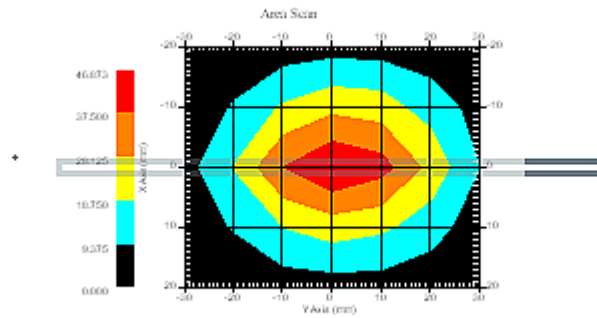


Project Number: 5594 V2
FCC ID: TPO-OTD36

Body Validation Plots



835MHz Body Validation



1900MHz Body Validation



Project Number: 5594 V2
FCC ID: TPO-OTD36

6.1 Experimental Results Summary

The results for each experimental assessment are contained within this section. Where any deviation has been made from the given procedures contained within IEEE-1528 or FCC Supplement C this has been described accordingly.

6.2 SAR Measurement Procedure

The ALSAS-10U calculates SAR using the following equation,

$$SAR = \frac{\sigma |E|^2}{\rho}$$

σ : represents the simulated tissue conductivity

ρ : represents the tissue density

The DUT is set to transmit at the required power in line with product specification, at each frequency relating to the LOW, MID, and HIGH channel settings.

Pre-scans are made on the device to establish the location for the transmitting antenna, using a large area scan in either air or tissue simulation fluid.

The DUT is placed against the Universal Phantom where the maximum area scan dimensions are larger than the physical size of the resonating antenna. When the scan size is not large enough to cover the peak SAR distribution, it is modified by either extending the area scan size in both the X and Y directions, or the device is shifted within the predefined area.

The area scan is then run to establish the peak SAR location (interpolated resolution set at 1mm²) which is then used to orient the center of the zoom scan. The zoom scan is then executed and the 1g and 10g averages are derived from the zoom scan volume (interpolated resolution set at 1mm³).

6.3 SAR Exposure Limits

SAR assessments have been made in line with the requirements of the documents listed in section 2 of this report.

Type of Exposure	Uncontrolled Environment Limit
Spatial Peak SAR (1g cube tissue for brain or body)	1.60 W/kg
Spatial Average SAR (whole body)	0.08 W/kg
Spatial Peak SAR (10g for hands, feet, ankles and wrist)	4.00 W/kg



Project Number: 5594 V2
FCC ID: TPO-OTD36

6.4 Equipment List

APREL utilize the following equipment.

Equipment Description	Asset/Serial Number	Calibrated	Calibration Due
ALSAS-10U	301571	Annual following IEEE	Annual following IEEE
Boundary Detection Unit	301572	July 2010	July 2011
Daq-Paq	301573	July 2010	July 2011
Pentium 4 Workstation	301574	N/A	N/A
Signal Generator	301468	May 2011	May 2013
Anritsu Power Meter	301602	Nov. 2010	Nov. 2011
Anritsu Power Sensor	301603	Nov. 2010	Nov. 2011
HP-Directional Coupler	100251	CBT	CBT
APREL 800-4200MHz 12W Amplifier	301577	CBT	CBT
APREL 2450MHz Validation Dipole	301581	July 2010	July 2011
APREL E-020 E-Field Probe	225	January 2011	January 2012
40MHz -20GHz VNA	301382	Nov. 2010	Nov. 2011
TRL Calibration Kit	301582	CBT	CBT
APREL Coaxial Probe (Dielectric Probe Kit)	100757	July 2010	July 2011
APREL Universal Phantom	301511	Cal once Aug 02	
APREL SAM Phantom LHS	301500	Cal once Aug 02	
APREL SAM Phantom RHS	301501	Cal once Aug 02	
APREL 15mm Dipole Separation Kit	301546	Cal once Aug 02	
APREL 10mm Dipole Separation Kit	301547	Cal once Aug 02	
APREL 5-6GHz 2 W Amplifier	301692	CBT	CBT
APREL MMW Directional Coupler	NYA	CBT	CBT
APREL 835MHz Validation Dipole	180-00554	July 2010	July 2011
APREL 1900MHz Validation Dipole	210-00704	July 2010	July 2011
ALSAS-10 Device Positioner ALS-H-E-SET-2	ALS-H-E-SET-2- LAB1	NA	NA
APREL 2600MHz Validation Dipole	ALS-WiMAX-2600	July 2010	July 2011
Agilent ESG	1059731	CBT	CBT
APREL Broad Band Dipole	ALS-BB-001	July 2010	July 2011

Applicable Duty Cycle Settings

The duty factor typical setting for GSM would be 8 and for a single slot and 11.8 for GPRS multiple slot. The change in the entry sets the dynamic sampling algorithm up on the electronics for the SAR system and allows for proper linearization, averaging and integration of the measurement within the sample. In short these settings are unique to ALSAS-10.

So the following applies,

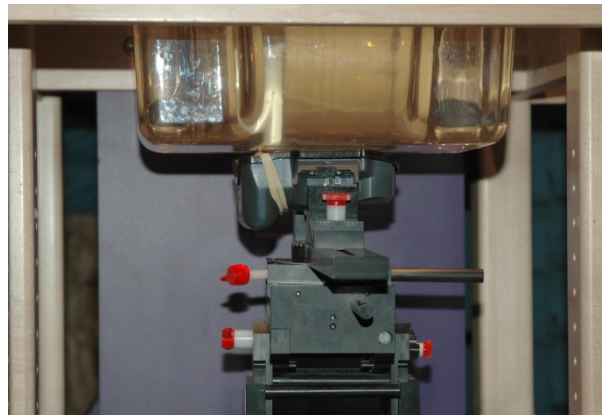
GSM Single Slot = 8 (1/8)
GSM GPRS 2 Slot = 11.8 (2/8)
CW Mode = 1



Project Number: 5594 V2
FCC ID: TPO-OTD36

6.5 SAR Measurement Results

Power	32.83dBm (measured)
DUT Position	Body Phantom
Separation	0mm
Antenna Type	Internal
Antenna Manufacturer	taoglas
Antenna Location	Left hand side
Power Mode	GSM/GPRS
Tx Frequency	824-849MHz
Duty Cycle	GSM 1/8 & 2/8
Tissue Depth	15mm
Phantom Type	Body
DUT Workstation Location	Centre
Device Positioner	UDP
Test Date	May 2011
Test Engineer	Maryna



Mode	Separation Distance (mm)	Channel	Frequency MHz	Measured Power	1g SAR W/kg	Extrapolated to 33 dB
GSM	0mm	128	824MHz	32.83	1.046	1.087
GSM	0mm	188	836MHz	32.77	0.979	1.032
GSM	0mm	251	849MHz	32.37	0.730	0.843

Spot Check on second system with same antenna

Mode	Separation Distance (mm)	Channel	Frequency MHz	Measured Power	1g SAR W/kg	Extrapolated to 33 dB
GSM/GPRS 2 Slots	0mm	128	824MHz	32.83	1.255	1.305

SAR Limit	Conservative Extrapolated SAR
1.6 W/kg	1.305W/kg

*Extrapolations per note Cetecom

SAR Plot for Conservative SAR Included in Appendix A.

Tissue 835 MHz				
	Permittivity(ϵ')	% Dev	Conductivity(δ)	% Dev
Target	55.20		0.97	
824 MHz	57.32	3.84	0.96	1.03
836 MHz	57.20	3.62	0.97	0.00
849 MHz	57.15	3.53	0.98	1.03

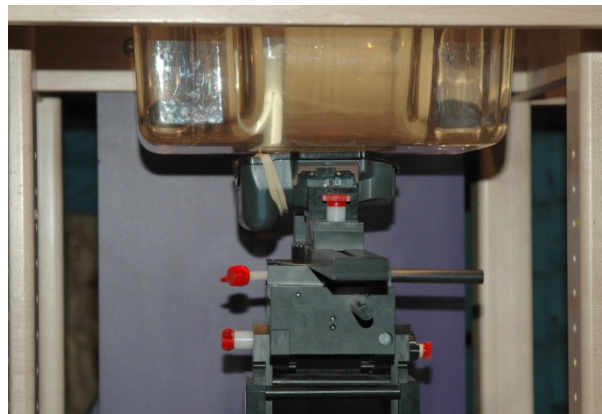
Note: Target values from RSS 102, Issue 4, Annex D



Project Number: 5594 V2
FCC ID: TPO-OTD36

SAR Measurement Results

Power	29.33dBm (measured)
DUT Position	Body Phantom
Separation	0mm
Antenna Type	Internal
Antenna Manufacturer	taoglas
Antenna Location	Left hand side
Power Mode	GSM/GPRS
Tx Frequency	1850-1910MHz
Duty Cycle	PCS 1/8 & 2/8
Tissue Depth	10mm
Phantom Type	Body
DUT Workstation Location	Centre
Device Positioner	UDP
Test Date	May 2011
Test Engineer	Maryna



Mode	Separation Distance (mm)	Channel	Frequency MHz	Measured Power	1g SAR W/kg	Extrapolated to 30 dB
GSM	0mm	512	1850MHz	28.63	0.106	0.145
GSM	0mm	661	1880MHz	28.89	0.113	0.146
GSM	0mm	810	1910MHz	29.33	0.114	0.133

Spot Check on second system with same antenna

Mode	Separation Distance (mm)	Channel	Frequency MHz	Measured Power	1g SAR W/kg	Extrapolated to 30 dB
GSM/GPRS 2 Slots	0mm	810	1910MHz	29.33	0.135	0.157

SAR Limit	Conservative Extrapolated SAR
1.6 W/kg	0.157 W/kg

*Extrapolations per note Cetecom

SAR Plot for Conservative SAR Included in Appendix A.

Tissue 1900 MHz				
	Permittivity	% Dev	Conductivity	% Dev
Target	53.30		1.52	
1850 MHz	51.34	3.68	1.56	2.63
1880 MHz	51.20	3.94	1.57	3.29
1910 MHz	51.12	4.09	1.57	3.29

Note: Target values from RSS 102, Issue 4, Annex D



Project Number: 5594 V2

FCC ID: TPO-OTD36

6.6 Additional Information

None.



Appendix A SAR Plots



Project Number: 5594 V2
FCC ID: TPO-OTD36

SAR Test Report 824MHz Single Slot

Report Date : 18-May-2011
By Operator : Maryna Nestrova
Measurement Date : 18-May-2011
Starting Time : 18-May-2011 04:51:41 PM
End Time : 18-May-2011 05:02:48 PM
Scanning Time : 667 secs

Product Data
Device Name : SecureAlert
Serial No. : 100702
Type : Other
Model : ORT Demo 3
Frequency : 824MHz
Max. Transmit Pwr : 2 W
Drift Time : 0 min(s)
Length : 90 mm
Width : 110 mm
Depth : 35 mm
Antenna Type : Internal
Orientation : Touch
Power Drift-Start : 1.054 W/kg
Power Drift-Finish: 1.019 W/kg
Power Drift (%) : -3.364
Picture : C:\alsas\bitmap\secare.bmp

Phantom Data
Name : APREL-Uni
Type : Uni-Phantom
Size (mm) : 280 x 280 x 200
Serial No. : User Define
Location : Center
Description : U

Tissue Data
Type : BODY
Serial No. : 835B
Frequency : 835.00 MHz
Last Calib. Date : 18-May-2011
Temperature : 22.00 °C
Ambient Temp. : 23.00 °C
Humidity : 30.00 RH%
Epsilon (Dielectric Constant): 57.32
Sigma : 0.96 S/m
Density : 1000.00 kg/cu. m



Project Number: 5594 V2

FCC ID: TPO-OTD36

Probe Data

Name : APREL
Model : E-020
Type : E-Field Triangle
Serial No. : 225
Last Calib. Date : 13-Jan-2011
Frequency : 835.00 MHz
Duty Cycle Factor (CreF) : 8
Conversion Factor : 6.6
Probe Sensitivity : 1.20 1.20 1.20 $\mu\text{V}/(\text{V/m})^2$
Compression Point : 95.00 mV
Offset : 1.56 mm

Measurement Data

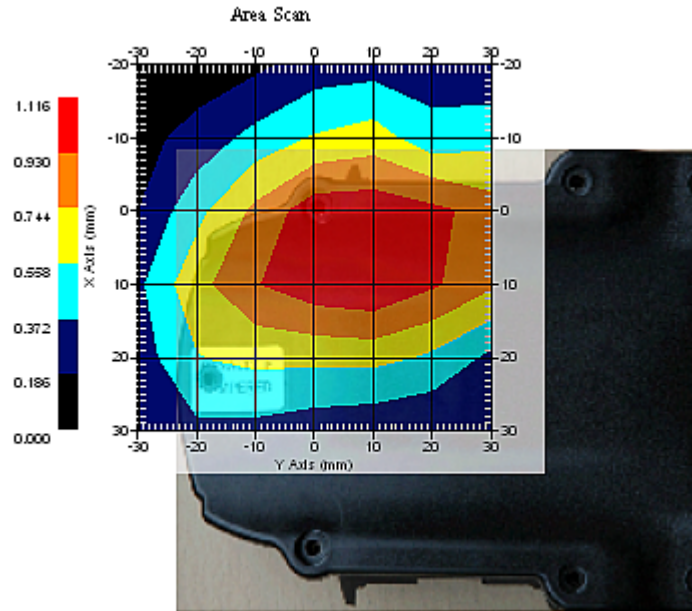
Crest Factor : 8
Scan Type : Complete
Tissue Temp. : 22.00 °C
Ambient Temp. : 22.00 °C
Set-up Date : 18-May-2011
Set-up Time : 4:36:47 PM
Area Scan : 6x7x1 : Measurement x=10mm, y=10mm, z=4mm
Zoom Scan : 5x5x8 : Measurement x=8mm, y=8mm, z=4mm

Other Data

DUT Position : Touch
Separation : 0
Channel : Low



Project Number: 5594 V2
FCC ID: TPO-OTD36



1 gram SAR value : 1.046 W/kg
Zoom Scan Peak SAR : 2.181 W/kg



Project Number: 5594 V2
FCC ID: TPO-OTD36

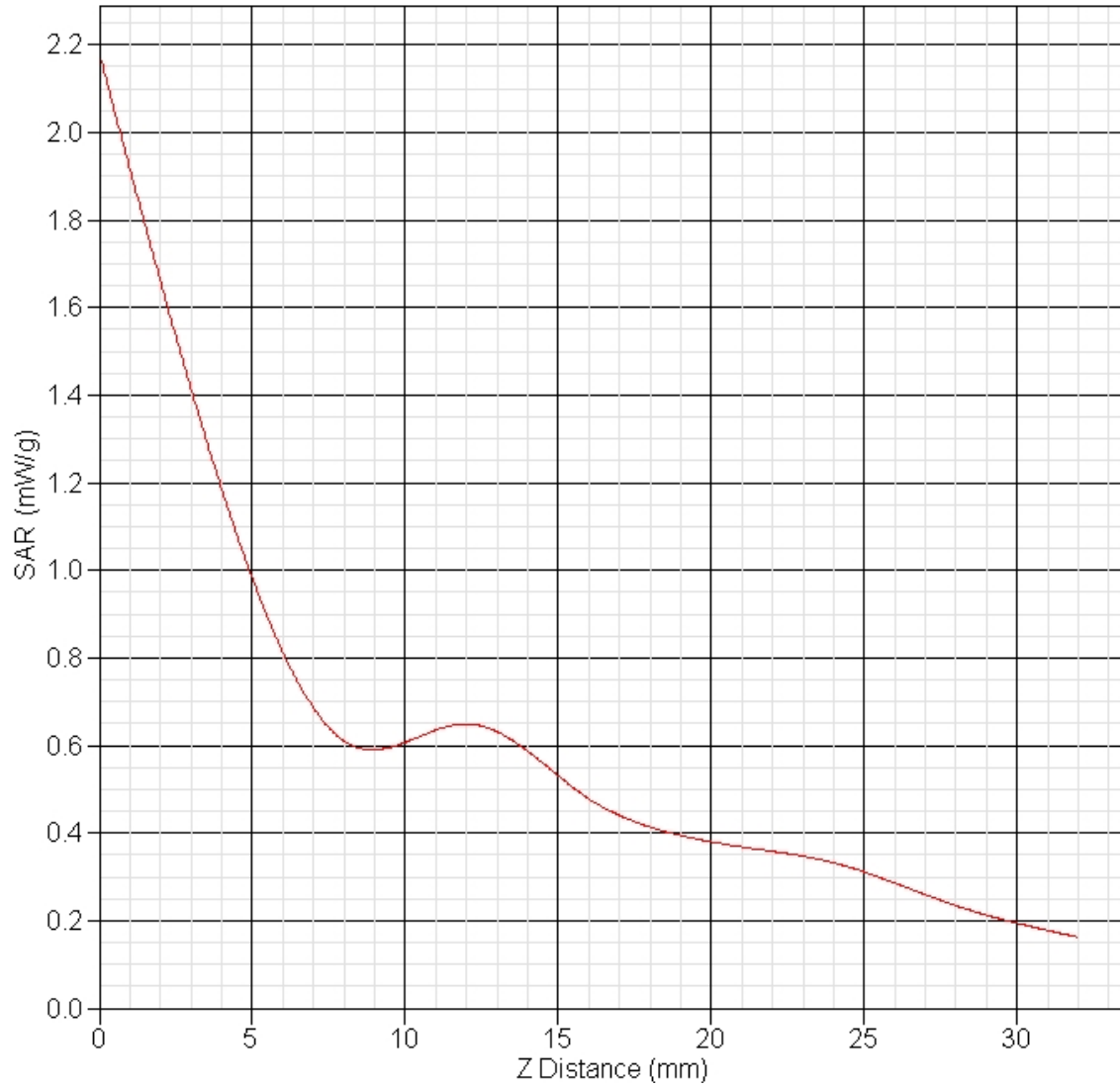
Exposure Assessment Measurement Uncertainty

Source of Uncertainty	Tolerance Value	Probability Distribution	Divisor	c_i^1 (1-g)	c_i^1 (10-g)	Standard Uncertainty (1-g) %	Standard Uncertainty (10-g) %
Measurement System							
Probe Calibration	3.5	normal	1	1	1	3.5	3.5
Axial Isotropy	3.7	rectangular	•3	$(1-cp)^{1/2}$	$(1-cp)^{1/2}$	1.5	1.5
Hemispherical Isotropy	10.9	rectangular	•3	•cp	•cp	4.4	4.4
Boundary Effect	1.0	rectangular	•3	1	1	0.6	0.6
Linearity	4.7	rectangular	•3	1	1	2.7	2.7
Detection Limit	1.0	rectangular	•3	1	1	0.6	0.6
Readout Electronics	1.0	normal	1	1	1	1.0	1.0
Response Time	0.8	rectangular	•3	1	1	0.5	0.5
Integration Time	1.7	rectangular	•3	1	1	1.0	1.0
RF Ambient Condition	3.0	rectangular	•3	1	1	1.7	1.7
Probe Positioner Mech.	0.4	rectangular	•3	1	1	0.2	0.2
Restriction							
Probe Positioning with respect to Phantom Shell	2.9	rectangular	•3	1	1	1.7	1.7
Extrapolation and Integration	3.7	rectangular	•3	1	1	2.1	2.1
Test Sample Positioning	4.0	normal	1	1	1	4.0	4.0
Device Holder Uncertainty	2.0	normal	1	1	1	2.0	2.0
Drift of Output Power	3.4	rectangular	•3	1	1	1.9	1.9
Phantom and Setup							
Phantom Uncertainty(shape & thickness tolerance)	3.4	rectangular	•3	1	1	2.0	2.0
Liquid Conductivity(target)	5.0	rectangular	•3	0.7	0.5	2.0	1.4
Liquid Conductivity(meas.)	0.0	normal	1	0.7	0.5	0.0	0.0
Liquid Permittivity(target)	5.0	rectangular	•3	0.6	0.5	1.7	1.4
Liquid Permittivity(meas.)	3.7	normal	1	0.6	0.5	2.2	1.8
Combined Uncertainty		RSS				9.7	9.4
Combined Uncertainty (coverage factor=2)		Normal (k=2)				19.4	18.9



Project Number: 5594 V2
FCC ID: TPO-OTD36

SAR-Z Axis at Hotspot x:-2.87 y:10.02



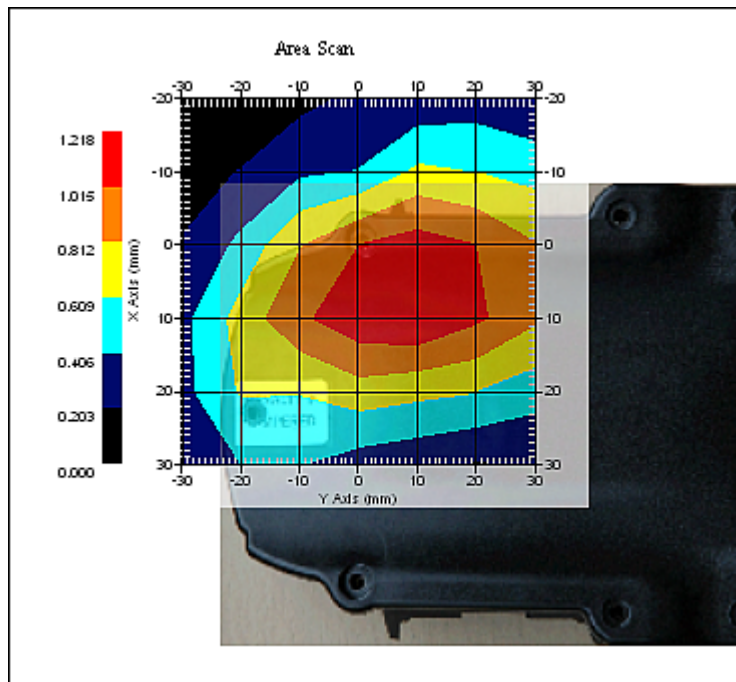
Project Number: 5594 V2
FCC ID: TPO-OTD36

SAR Test Report

Report Date : 18-May-2011
By Operator : 123
Measurement Date : 18-May-2011
Starting Time : 18-May-2011 10:49:53 AM
End Time : 18-May-2011 11:01:04 AM
Scanning Time : 671 secs

Tissue
Epsilon (Dielectric Constant): 57.20
Sigma : 0.97 S/m

Product Data
Device Name : SecureAlert
Serial No. : 100702
Type : Other
Model : ORT Demo 3
Frequency : 836 MHz
Max. Transmit Pwr : 2 W
Drift Time : 0 min(s)
Length : 90 mm
Width : 110 mm
Depth : 35 mm
Antenna Type : Internal
Orientation : Touch
Power Drift-Start : 1.037 W/kg
Power Drift-Finish: 1.000 W/kg
Power Drift (%) : -3.625
Picture : C:\alsas\bitmap\secare.bmp



1 gram SAR value : 0.979 W/kg
Zoom Scan Peak SAR : 1.671 W/kg



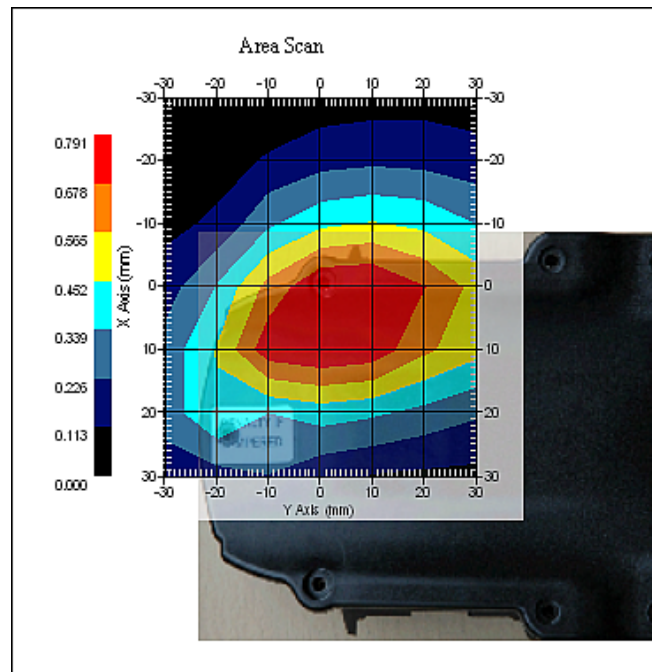
Project Number: 5594 V2
FCC ID: TPO-OTD36

SAR Test Report

Report Date : 14-May-2011
By Operator : Maryna Nestrova
Measurement Date : 14-May-2011
Starting Time : 14-May-2011 01:56:21 PM
End Time : 14-May-2011 02:08:10 PM
Scanning Time : 709 secs

Tissue
Epsilon (Dielectric Constant): 57.15
Sigma : 0.98 S/m

Product Data
Device Name : SecureAlert
Serial No. : 100702
Type : Other
Model : ORT Demo 3
Frequency : 849 MHz
Drift Time : 0 min(s)
Max. Transmit Pwr : 2 W
Length : 90 mm
Width : 110 mm
Depth : 35 mm
Antenna Type : Internal
Orientation : Touch
Power Drift-Start : 0.782 W/kg
Power Drift-Finish: 0.795 W/kg
Power Drift (%) : 1.582
Picture : C:\alsas\bitmap\secare.bmp



1 gram SAR value : 0.730 W/kg
Zoom Scan Peak SAR : 1.291 W/kg



Project Number: 5594 V2
FCC ID: TPO-OTD36

SAR Test Report 824MHz GPRS 2 Slot

Report Date : 18-May-2011
By Operator : 123
Measurement Date : 18-May-2011
Starting Time : 18-May-2011 10:21:52 AM
End Time : 18-May-2011 10:40:06 AM
Scanning Time : 1094 secs

Product Data
Device Name : SecureAlert
Serial No. : 100702
Type : Other
Model : ORT Demo 3
Frequency : 824.00 MHz
Max. Transmit Pwr : 2 W
Drift Time : 0 min(s)
Length : 90 mm
Width : 110 mm
Depth : 35 mm
Antenna Type : Internal
Orientation : Touch
Power Drift-Start : 1.226 W/kg
Power Drift-Finish: 1.190 W/kg
Power Drift (%) : -2.908
Picture : C:\alsas\bitmap\secare.bmp

Phantom Data
Name : APREL-Uni
Type : Uni-Phantom
Size (mm) : 280 x 280 x 200
Serial No. : User Define
Location : Center
Description : U

Tissue Data
Type : BODY
Serial No. : 835B
Frequency : 835.00 MHz
Last Calib. Date : 18-May-2011
Temperature : 22.00 °C
Ambient Temp. : 23.00 °C
Humidity : 30.00 RH%
Epsilon (Dielectric Constant): 57.32
Sigma : 0.96 S/m
Density : 1000.00 kg/cu. m



Project Number: 5594 V2

FCC ID: TPO-OTD36

Probe Data

Name : APREL
Model : E-020
Type : E-Field Triangle
Serial No. : 225
Last Calib. Date : 13-Jan-2011
Frequency : 835.00 MHz
Conversion Factor : 6.6
Probe Sensitivity : 1.20 1.20 1.20 $\mu\text{V}/(\text{V}/\text{m})^2$
Compression Point : 95.00 mV
Offset : 1.56 mm

Measurement Data

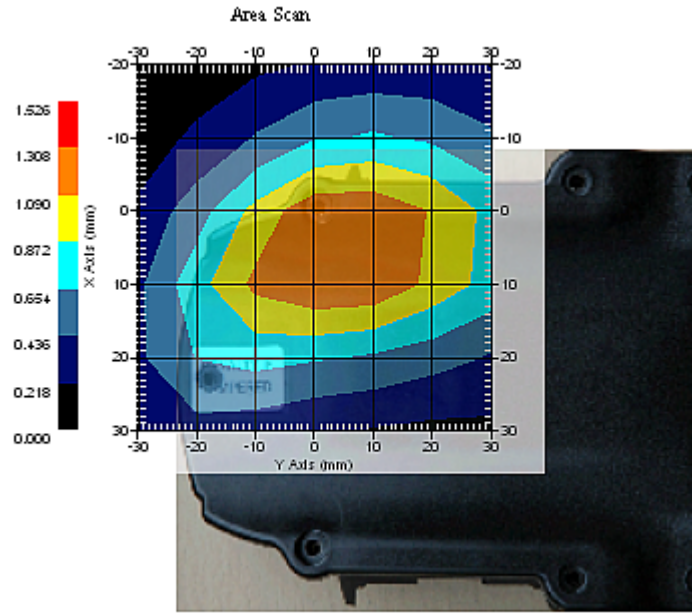
Crest Factor : 11.8
Scan Type : Complete
Tissue Temp. : 22.00 °C
Ambient Temp. : 22.00 °C
Set-up Date : 18-May-2011
Set-up Time : 10:21:21 AM
Area Scan : 6x7x1 : Measurement x=10mm, y=10mm, z=4mm
Zoom Scan : 5x5x8 : Measurement x=8mm, y=8mm, z=4mm

Other Data

DUT Position : Touch
Separation : 0
Channel : Low



Project Number: 5594 V2
FCC ID: TPO-OTD36



1 gram SAR value : 1.255 W/kg
Zoom Scan Peak SAR : 1.981 W/kg



Project Number: 5594 V2
FCC ID: TPO-OTD36

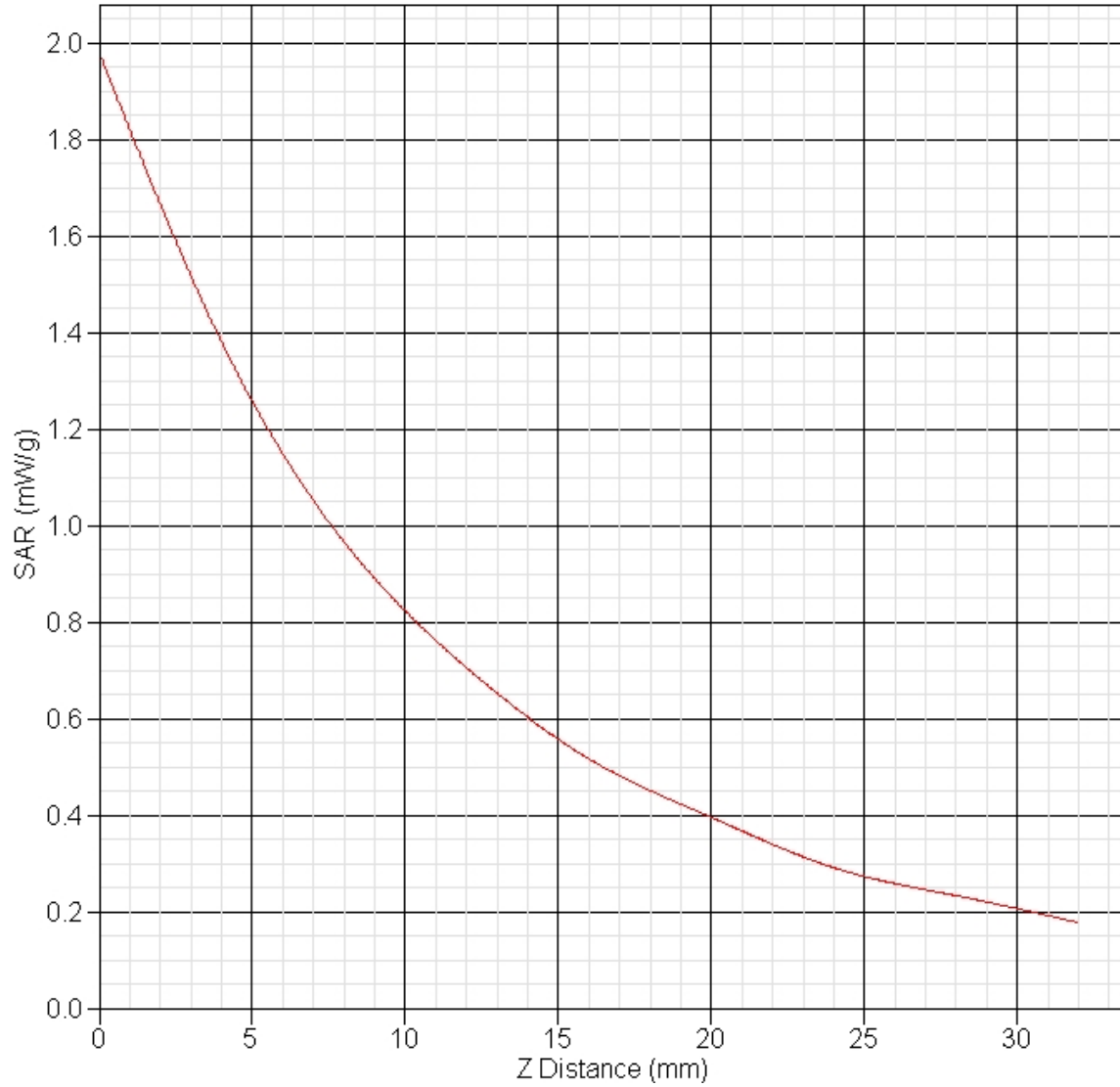
Exposure Assessment Measurement Uncertainty

Source of Uncertainty	Tolerance Value	Probability Distribution	Divisor	c_i^{-1} (1-g)	c_i^{-1} (10-g)	Standard Uncertainty (1-g) %	Standard Uncertainty (10-g) %
Measurement System							
Probe Calibration	3.5	normal	1	1	1	3.5	3.5
Axial Isotropy	3.7	rectangular	•3	$(1-cp)^{1/2}$	$(1-cp)^{1/2}$	1.5	1.5
Hemispherical Isotropy	10.9	rectangular	•3	•cp	•cp	4.4	4.4
Boundary Effect	1.0	rectangular	•3	1	1	0.6	0.6
Linearity	4.7	rectangular	•3	1	1	2.7	2.7
Detection Limit	1.0	rectangular	•3	1	1	0.6	0.6
Readout Electronics	1.0	normal	1	1	1	1.0	1.0
Response Time	0.8	rectangular	•3	1	1	0.5	0.5
Integration Time	1.7	rectangular	•3	1	1	1.0	1.0
RF Ambient Condition	3.0	rectangular	•3	1	1	1.7	1.7
Probe Positioner Mech.	0.4	rectangular	•3	1	1	0.2	0.2
Restriction							
Probe Positioning with respect to Phantom Shell	2.9	rectangular	•3	1	1	1.7	1.7
Extrapolation and Integration	3.7	rectangular	•3	1	1	2.1	2.1
Test Sample Positioning	4.0	normal	1	1	1	4.0	4.0
Device Holder Uncertainty	2.0	normal	1	1	1	2.0	2.0
Drift of Output Power	2.9	rectangular	•3	1	1	1.7	1.7
Phantom and Setup							
Phantom Uncertainty(shape & thickness tolerance)	3.4	rectangular	•3	1	1	2.0	2.0
Liquid Conductivity(target)	5.0	rectangular	•3	0.7	0.5	2.0	1.4
Liquid Conductivity(meas.)	0.0	normal	1	0.7	0.5	0.0	0.0
Liquid Permittivity(target)	5.0	rectangular	•3	0.6	0.5	1.7	1.4
Liquid Permittivity(meas.)	3.7	normal	1	0.6	0.5	2.2	1.8
Combined Uncertainty		RSS				9.6	9.4
Combined Uncertainty (coverage factor=2)		Normal (k=2)				19.3	18.8



Project Number: 5594 V2
FCC ID: TPO-OTD36

SAR-Z Axis at Hotspot x:-2.79 y:8.05



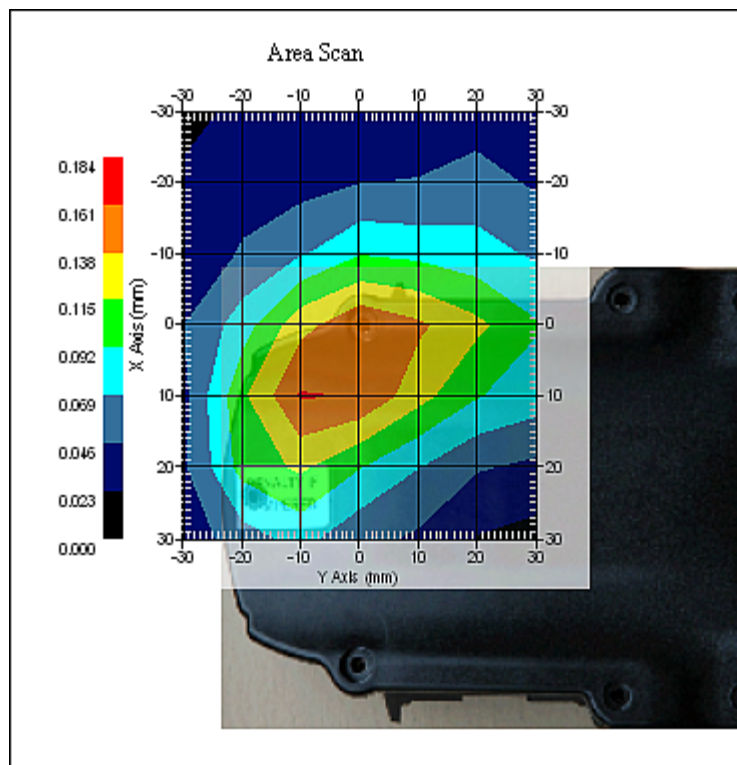
Project Number: 5594 V2
FCC ID: TPO-OTD36

SAR Test Report

Report Date : 14-May-2011
By Operator : Maryna Nestrova
Measurement Date : 14-May-2011
Starting Time : 14-May-2011 05:11:54 PM
End Time : 14-May-2011 05:25:55 PM
Scanning Time : 841 secs

Product Data
Device Name : SecureAlert
Serial No. : 100702
Type : Other
Model : ORT Demo 3
Frequency : 1850 MHz
Max. Transmit Pwr : 1 W
Drift Time : 0 min(s)
Length : 90 mm
Width : 110 mm
Depth : 35 mm
Antenna Type : Internal
Orientation : Touch
Power Drift-Start : 0.150 W/kg
Power Drift-Finish: 0.144 W/kg
Power Drift (%) : -3.857
Picture : C:\alsas\bitmap\secare.bmp

Tissue
Epsilon (Dielectric Constant): 51.34
Sigma : 1.56 S/m



1 gram SAR value : 0.106 W/kg
Zoom Scan Peak SAR : 0.230 W/kg



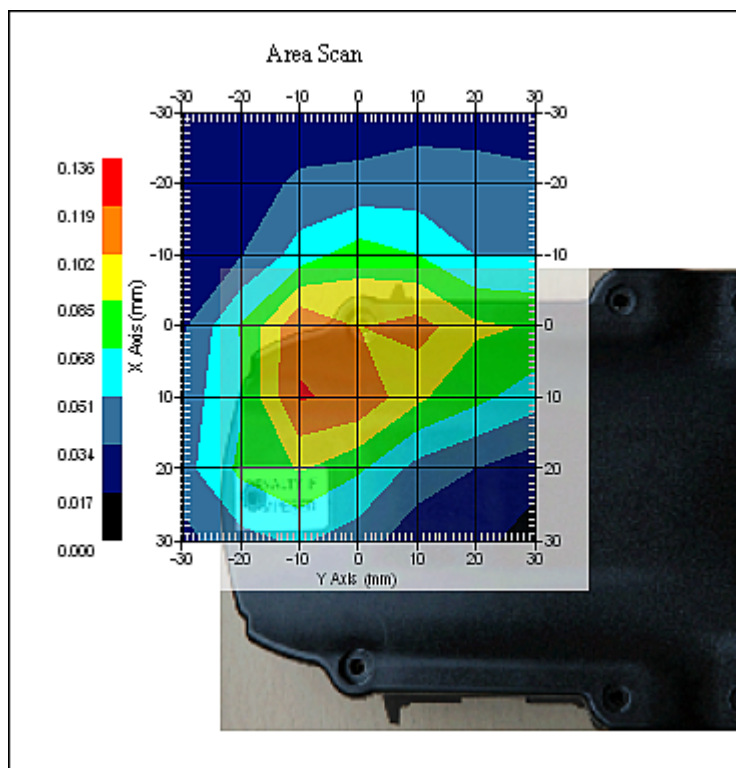
Project Number: 5594 V2
FCC ID: TPO-OTD36

SAR Test Report

Report Date : 14-May-2011
By Operator : Maryna Nestrova
Measurement Date : 14-May-2011
Starting Time : 14-May-2011 04:35:16 PM
End Time : 14-May-2011 04:49:37 PM
Scanning Time : 861 secs

Product Data
Device Name : SecureAlert
Serial No. : 100702
Type : Other
Model : ORT Demo 3
Frequency : 1880.00 MHz
Max. Transmit Pwr : 1 W
Drift Time : 0 min(s)
Length : 90 mm
Width : 110 mm
Depth : 35 mm
Antenna Type : Internal
Orientation : Touch
Power Drift-Start : 0.116 W/kg
Power Drift-Finish: 0.116 W/kg
Power Drift (%) : 0.084
Picture : C:\alsas\bitmap\secare.bmp

Tissue
Epsilon (Dielectric Constant): 51.20
Sigma : 1.57 S/m



1 gram SAR value : 0.113 W/kg
Zoom Scan Peak SAR : 0.200 W/kg



Project Number: 5594 V2
FCC ID: TPO-OTD36

SAR Test Report 1910MHz 1 Slot

Report Date : 14-May-2011
By Operator : Maryna Nestrova
Measurement Date : 14-May-2011
Starting Time : 14-May-2011 04:53:05 PM
End Time : 14-May-2011 05:07:38 PM
Scanning Time : 873 secs

Product Data
Device Name : SecureAlert
Serial No. : 100702
Type : Other
Model : ORT Demo 3
Frequency : 1910.00 MHz
Max. Transmit Pwr : 1 W
Drift Time : 0 min(s)
Length : 90 mm
Width : 110 mm
Depth : 35 mm
Antenna Type : Internal
Orientation : Touch
Power Drift-Start : 0.120 W/kg
Power Drift-Finish: 0.120 W/kg
Power Drift (%) : 0.558
Picture : C:\alsas\bitmap\secare.bmp

Phantom Data
Name : APREL-Uni
Type : Uni-Phantom
Size (mm) : 280 x 280 x 200
Serial No. : User Define
Location : Center
Description : U

Tissue Data
Type : BODY
Serial No. : 1900B
Frequency : 1900.00 MHz
Last Calib. Date : 14-May-2011
Temperature : 21.00 °C
Ambient Temp. : 23.00 °C
Humidity : 50.00 RH%
Epsilon (Dielectric Constant): 51.12
Sigma : 1.57 S/m
Density : 1000.00 kg/cu. m



Project Number: 5594 V2

FCC ID: TPO-OTD36

Probe Data

Name : APREL
Model : E-020
Type : E-Field Triangle
Serial No. : 225
Last Calib. Date : 13-Jan-2011
Frequency : 1910.00 MHz
Duty Cycle Factor (CreF) : 8
Conversion Factor : 5.6
Probe Sensitivity : 1.20 1.20 1.20 $\mu\text{V}/(\text{V/m})^2$
Compression Point : 95.00 mV
Offset : 1.56 mm

Measurement Data

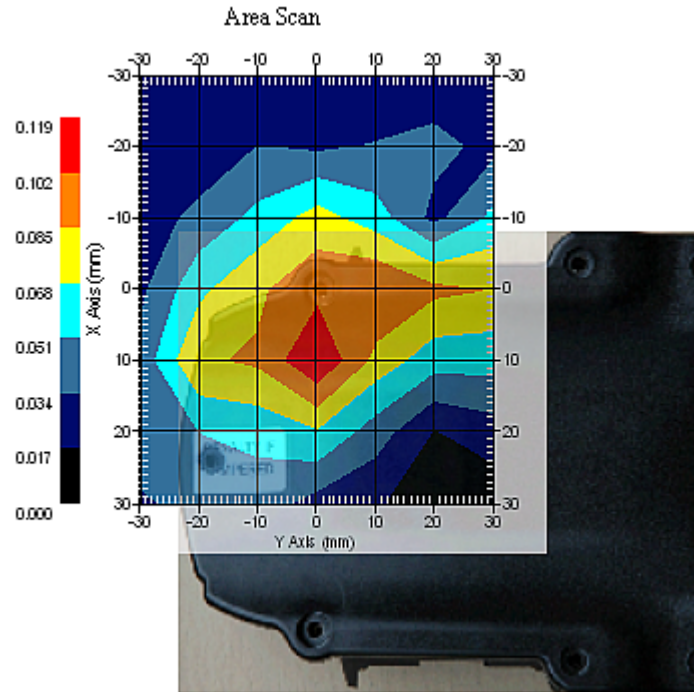
Crest Factor : 8
Scan Type : Complete
Tissue Temp. : 22.00 °C
Ambient Temp. : 22.00 °C
Set-up Date : 14-May-2011
Set-up Time : 4:50:56 PM
Area Scan : 7x7x1 : Measurement x=10mm, y=10mm, z=4mm
Zoom Scan : 5x5x8 : Measurement x=8mm, y=8mm, z=4mm

Other Data

DUT Position : Touch
Separation : 0
Channel : High



Project Number: 5594 V2
FCC ID: TPO-OTD36



1 gram SAR value : 0.114 W/kg
Zoom Scan Peak SAR : 0.130 W/kg



Project Number: 5594 V2
FCC ID: TPO-OTD36

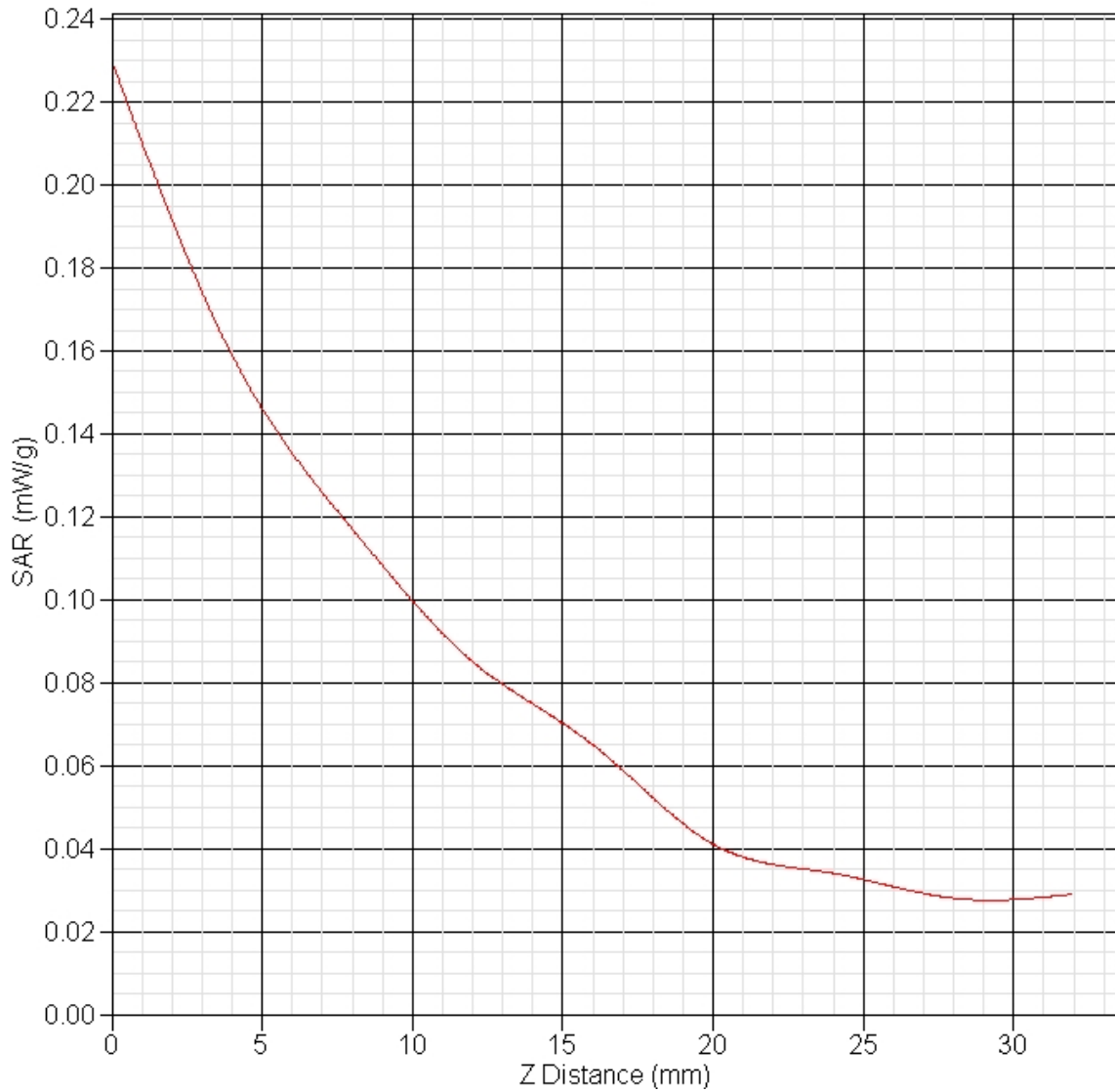
Exposure Assessment Measurement Uncertainty

Source of Uncertainty	Tolerance Value	Probability Distribution	Divisor	c_i^1 (1-g)	c_i^1 (10-g)	Standard Uncertainty (1-g) %	Standard Uncertainty (10-g) %
Measurement System							
Probe Calibration	3.5	normal	1	1	1	3.5	3.5
Axial Isotropy	3.7	rectangular	•3	$(1-cp)^{1/2}$	$(1-cp)^{1/2}$	1.5	1.5
Hemispherical Isotropy	10.9	rectangular	•3	•cp	•cp	4.4	4.4
Boundary Effect	1.0	rectangular	•3	1	1	0.6	0.6
Linearity	4.7	rectangular	•3	1	1	2.7	2.7
Detection Limit	1.0	rectangular	•3	1	1	0.6	0.6
Readout Electronics	1.0	normal	1	1	1	1.0	1.0
Response Time	0.8	rectangular	•3	1	1	0.5	0.5
Integration Time	1.7	rectangular	•3	1	1	1.0	1.0
RF Ambient Condition	3.0	rectangular	•3	1	1	1.7	1.7
Probe Positioner Mech.	0.4	rectangular	•3	1	1	0.2	0.2
Restriction							
Probe Positioning with respect to Phantom Shell	2.9	rectangular	•3	1	1	1.7	1.7
Extrapolation and Integration	3.7	rectangular	•3	1	1	2.1	2.1
Test Sample Positioning	4.0	normal	1	1	1	4.0	4.0
Device Holder Uncertainty	2.0	normal	1	1	1	2.0	2.0
Drift of Output Power	0.6	rectangular	•3	1	1	0.3	0.3
Phantom and Setup							
Phantom Uncertainty(shape & thickness tolerance)	3.4	rectangular	•3	1	1	2.0	2.0
Liquid Conductivity(target)	5.0	rectangular	•3	0.7	0.5	2.0	1.4
Liquid Conductivity(meas.)	3.3	normal	1	0.7	0.5	2.3	1.6
Liquid Permittivity(target)	5.0	rectangular	•3	0.6	0.5	1.7	1.4
Liquid Permittivity(meas.)	4.1	normal	1	0.6	0.5	2.5	2.0
Combined Uncertainty		RSS				9.8	9.4
Combined Uncertainty (coverage factor=2)		Normal (k=2)				19.7	18.9



Project Number: 5594 V2
FCC ID: TPO-OTD36

SAR-Z Axis at Hotspot x:2.11 y:-1.99



Project Number: 5594 V2
FCC ID: TPO-OTD36

SAR Test Report 1910MHz GPRS 2 Slot

Report Date : 18-May-2011
By Operator : Maryna Nestrova
Measurement Date : 18-May-2011
Starting Time : 18-May-2011 11:45:01 AM
End Time : 18-May-2011 12:00:26 PM
Scanning Time : 925 secs

Product Data
Device Name : SecureAlert
Serial No. : 100702
Type : Other
Model : ORT Demo 3
Frequency : 1910 MHz
Max. Transmit Pwr : 1 W
Drift Time : 0 min(s)
Length : 90 mm
Width : 110 mm
Depth : 35 mm
Antenna Type : Internal
Orientation : Touch
Power Drift-Start : 0.126 W/kg
Power Drift-Finish: 0.124 W/kg
Power Drift (%) : -1.195
Picture : C:\alsas\bitmap\secare.bmp

Phantom Data
Name : APREL-Uni
Type : Uni-Phantom
Size (mm) : 280 x 280 x 200
Serial No. : User Define
Location : Center
Description : U

Tissue Data
Type : BODY
Serial No. : 1900B
Frequency : 1900.00 MHz
Last Calib. Date : 18-May-2011
Temperature : 21.00 °C
Ambient Temp. : 23.00 °C
Humidity : 50.00 RH%
Epsilon (Dielectric Constant): 51.12
Sigma : 1.57 S/m
Density : 1000.00 kg/cu. m



Project Number: 5594 V2

FCC ID: TPO-OTD36

Probe Data

Name : APREL
Model : E-020
Type : E-Field Triangle
Serial No. : 225
Last Calib. Date : 13-Jan-2011
Frequency : 1900.00 MHz
Duty Cycle Factor (CreF) : 11.8
Conversion Factor : 5.6
Probe Sensitivity : 1.20 1.20 1.20 $\mu\text{V}/(\text{V/m})^2$
Compression Point : 95.00 mV
Offset : 1.56 mm

Measurement Data

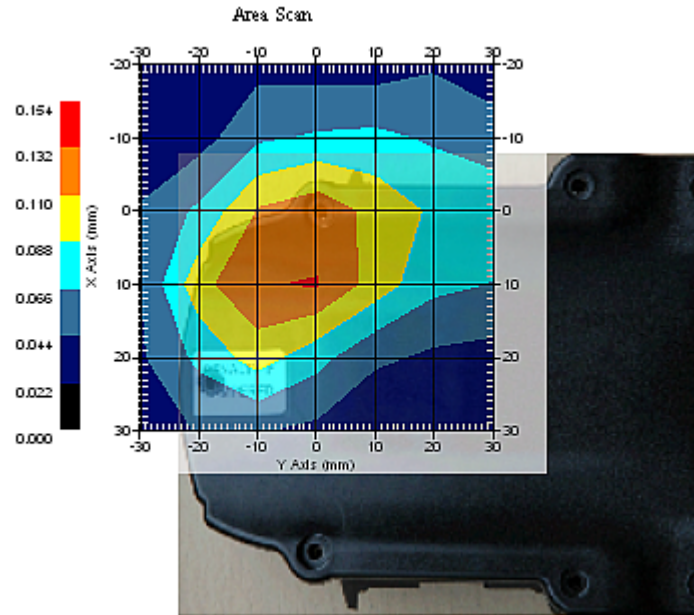
Crest Factor : 11.8
Scan Type : Complete
Tissue Temp. : 22.00 °C
Ambient Temp. : 22.00 °C
Set-up Date : 18-May-2011
Set-up Time : 11:22:26 AM
Area Scan : 6x7x1 : Measurement x=10mm, y=10mm, z=4mm
Zoom Scan : 5x5x8 : Measurement x=8mm, y=8mm, z=4mm

Other Data

DUT Position : Touch
Separation : 0
Channel : High



Project Number: 5594 V2
FCC ID: TPO-OTD36



1 gram SAR value : 0.135 W/kg
Zoom Scan Peak SAR : 0.260 W/kg



Project Number: 5594 V2
FCC ID: TPO-OTD36

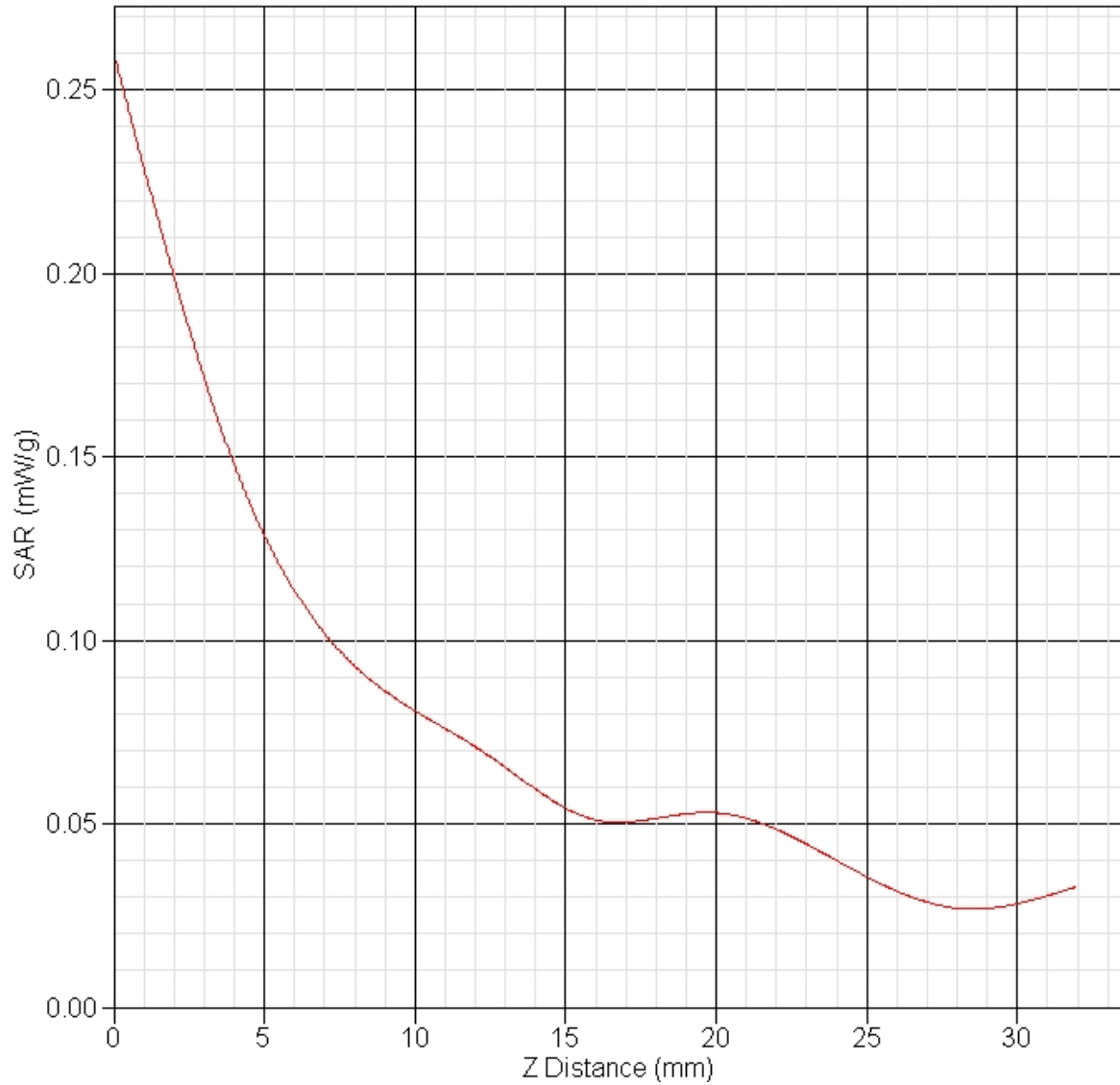
Exposure Assessment Measurement Uncertainty

Source of Uncertainty	Tolerance Value	Probability Distribution	Divisor	c_i^1 (1-g)	c_i^1 (10-g)	Standard Uncertainty (1-g) %	Standard Uncertainty (10-g) %
Measurement System							
Probe Calibration	3.5	normal	1	1	1	3.5	3.5
Axial Isotropy	3.7	rectangular	•3	$(1-cp)^{1/2}$	$(1-cp)^{1/2}$	1.5	1.5
Hemispherical Isotropy	10.9	rectangular	•3	•cp	•cp	4.4	4.4
Boundary Effect	1.0	rectangular	•3	1	1	0.6	0.6
Linearity	4.7	rectangular	•3	1	1	2.7	2.7
Detection Limit	1.0	rectangular	•3	1	1	0.6	0.6
Readout Electronics	1.0	normal	1	1	1	1.0	1.0
Response Time	0.8	rectangular	•3	1	1	0.5	0.5
Integration Time	1.7	rectangular	•3	1	1	1.0	1.0
RF Ambient Condition	3.0	rectangular	•3	1	1	1.7	1.7
Probe Positioner Mech.	0.4	rectangular	•3	1	1	0.2	0.2
Restriction							
Probe Positioning with respect to Phantom Shell	2.9	rectangular	•3	1	1	1.7	1.7
Extrapolation and Integration	3.7	rectangular	•3	1	1	2.1	2.1
Test Sample Positioning	4.0	normal	1	1	1	4.0	4.0
Device Holder Uncertainty	2.0	normal	1	1	1	2.0	2.0
Drift of Output Power	1.2	rectangular	•3	1	1	0.7	0.7
Phantom and Setup							
Phantom Uncertainty(shape & thickness tolerance)	3.4	rectangular	•3	1	1	2.0	2.0
Liquid Conductivity(target)	5.0	rectangular	•3	0.7	0.5	2.0	1.4
Liquid Conductivity(meas.)	3.3	normal	1	0.7	0.5	2.3	1.6
Liquid Permittivity(target)	5.0	rectangular	•3	0.6	0.5	1.7	1.4
Liquid Permittivity(meas.)	4.1	normal	1	0.6	0.5	2.5	2.0
Combined Uncertainty		RSS				9.9	9.5
Combined Uncertainty (coverage factor=2)		Normal (k=2)				19.7	18.9



Project Number: 5594 V2
FCC ID: TPO-OTD36

SAR-Z Axis at Hotspot x:-2.85 y:-0.01



Appendix B Validation



Project Number: 5594 V2
FCC ID: TPO-OTD36

SAR Basic Test Report

Product Data

Serial No. : 180-00554
Power Drift-Start : 7.896 W/kg
Power Drift-Finish: 7.800 W/kg
Power Drift (%) : -1.210
Picture : (No picture)

Phantom Data

Type : Uni-Phantom

Tissue Data

Type : BODY
Serial No. : 835B
Frequency : 835.00 MHz
Epsilon (Dielectric Constant): 57.24
Sigma : 0.97 S/m

Probe Data

Name : APREL
Model : E-020
Type : E-Field Triangle
Serial No. : 225
Last Calib. Date : 13-Jan-2011
Frequency : 835.00 MHz
Conversion Factor : 6.6

Measurement Data

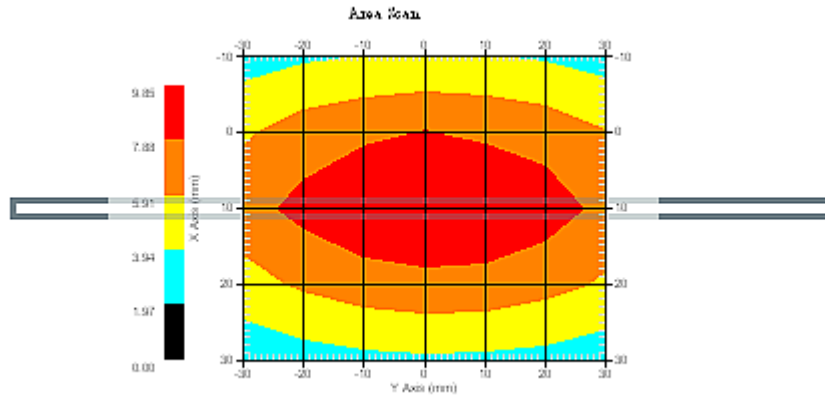
Crest Factor : 1
Tissue Temp. : 22.00 °C
Ambient Temp. : 23.00 °C
Set-up Date : 14-May-2011
Area Scan : 5x7x1 : Measurement x=10mm, y=10mm, z=4mm
Zoom Scan : 5x5x8 : Measurement x=8mm, y=8mm, z=4mm

Other Data

DUT Position : Touch
Separation : 0

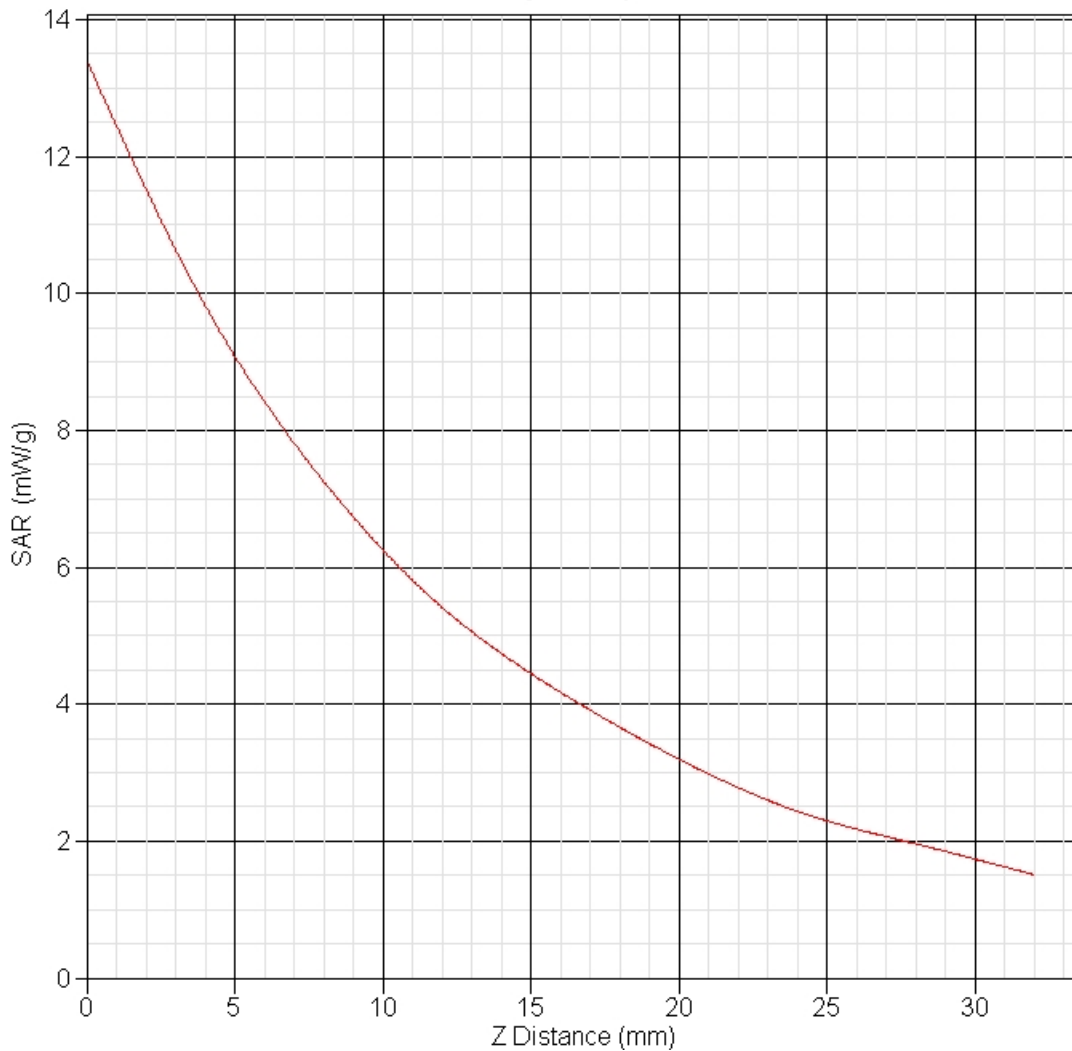


Project Number: 5594 V2
FCC ID: TPO-OTD36



1 gram SAR value : 9.177 W/kg
10 gram SAR value : 5.989 W/kg
Area Scan Peak SAR : 9.849 W/kg
Zoom Scan Peak SAR : 13.412 W/kg

SAR-Z Axis at Hotspot x:0.26 y:0.06



Project Number: 5594 V2
FCC ID: TPO-OTD36

SAR Basic Test Report

Product Data

Serial No. : 180-00554
Power Drift-Start : 8.078 W/kg
Power Drift-Finish: 7.987 W/kg
Power Drift (%) : -1.137
Picture : (No picture)

Phantom Data

Type : Uni-Phantom

Tissue Data

Type : BODY
Serial No. : 835B
Frequency : 835.00 MHz
Epsilon (Dielectric Constant): 57.24
Sigma : 0.97 S/m

Probe Data

Name : APREL
Model : E-020
Type : E-Field Triangle
Serial No. : 225
Last Calib. Date : 13-Jan-2011
Frequency : 835.00 MHz
Conversion Factor : 6.6

Measurement Data

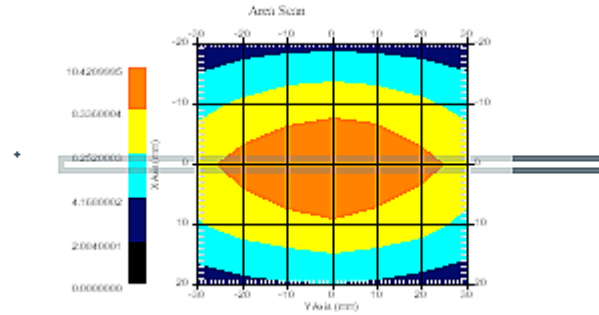
Crest Factor : 1
Tissue Temp. : 22.00 °C
Ambient Temp. : 23.00 °C
Set-up Date : 18-May-2011
Area Scan : 5x7x1 : Measurement x=10mm, y=10mm, z=4mm
Zoom Scan : 5x5x8 : Measurement x=8mm, y=8mm, z=4mm

Other Data

DUT Position : Touch
Separation : 0

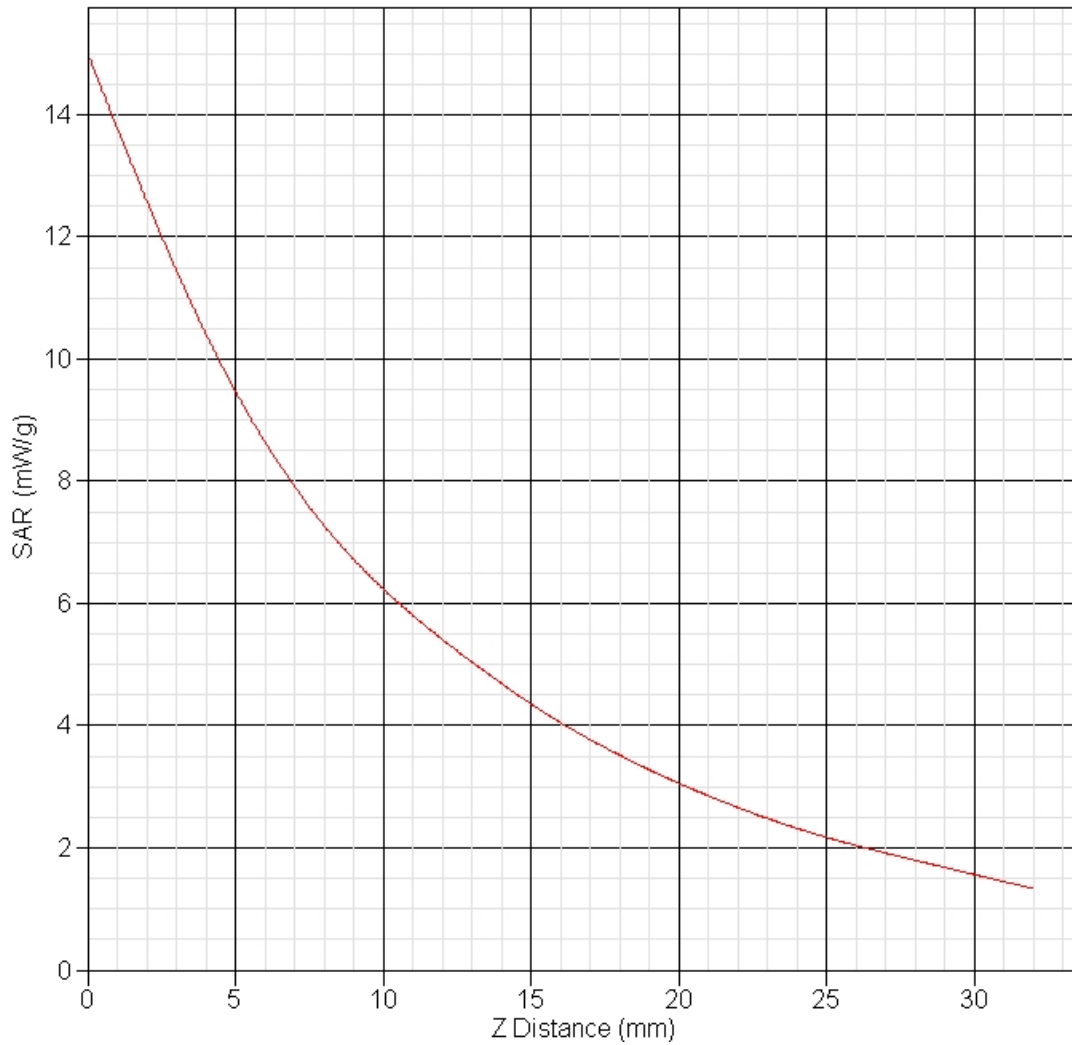


Project Number: 5594 V2
FCC ID: TPO-OTD36



1 gram SAR value : 9.650 W/kg
10 gram SAR value : 6.154 W/kg
Area Scan Peak SAR : 10.305 W/kg
Zoom Scan Peak SAR : 14.613 W/kg

SAR-Z Axis at Hotspot x:0.16 y:7.88



Project Number: 5594 V2
FCC ID: TPO-OTD36

SAR Basic Test Report

Product Data
Serial No. : 220-00754
Power Drift-Start : 25.469 W/kg
Power Drift-Finish: 24.342 W/kg
Power Drift (%) : -4.426
Picture : (No Picture)

Phantom Data
Type : Uni-Phantom

Tissue Data
Type : BODY
Serial No. : 1900B
Frequency : 1900.00 MHz
Epsilon : 51.12 F/m
Sigma : 1.57 S/m

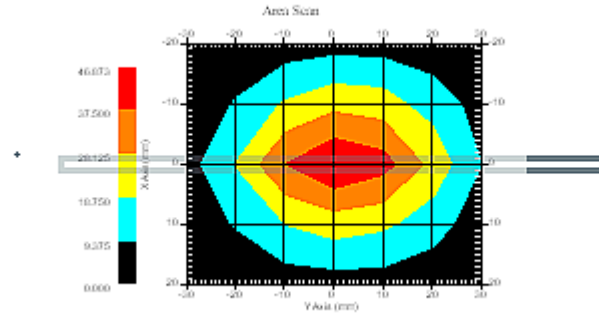
Probe Data
Name : APREL
Model : E-020
Type : E-Field Triangle
Serial No. : 225
Last Calib. Date : 13-Jan-2011
Frequency : 1900.00 MHz
Conversion Factor: 5.6

Measurement Data
Crest Factor : 1
Tissue Temp. : 21.00 °C
Ambient Temp. : 22.00 °C
Set-up Date : 14-May-2011
Area Scan : 5x7x1 : Measurement x=10mm, y=10mm, z=4mm
Zoom Scan : 5x5x8 : Measurement x=8mm, y=8mm, z=4mm

Other Data
DUT Position : Touch
Separation : 0

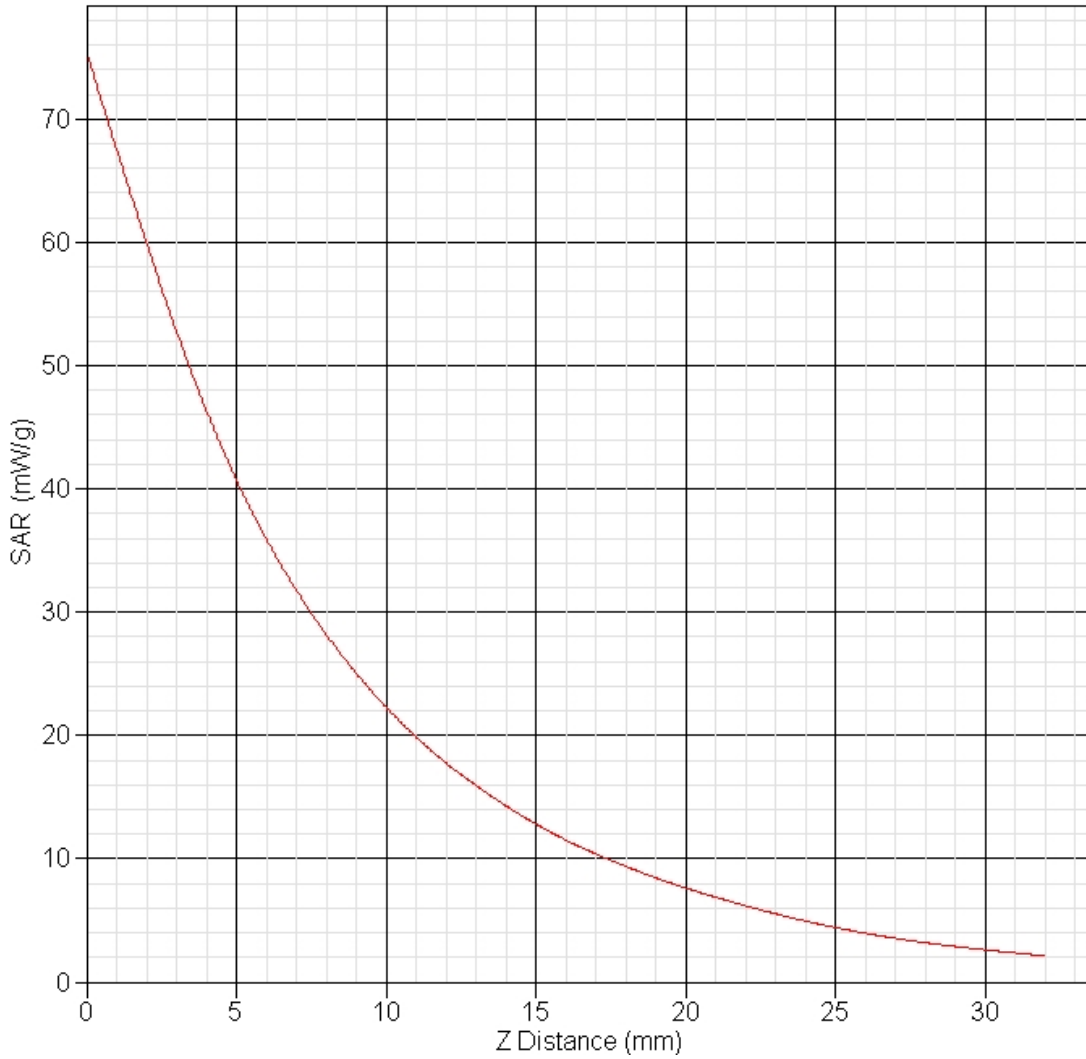


Project Number: 5594 V2
FCC ID: TPO-OTD36



1 gram SAR value : 39.873 W/kg
Zoom Scan Peak SAR : 75.466 W/kg

SAR-Z Axis
at Hotspot x:0.12 y:-0.17



Project Number: 5594 V2
FCC ID: TPO-OTD36

SAR Basic Test Report

Product Data
Serial No. : 220-00754
Power Drift-Start : 21.268 W/kg
Power Drift-Finish: 21.146 W/kg
Power Drift (%) : -0.576
Picture : (No Picture)

Phantom Data
Type : Uni-Phantom

Tissue Data
Type : BODY
Serial No. : 1900B
Frequency : 1900.00 MHz
Epsilon : 51.12 F/m
Sigma : 1.57 S/m

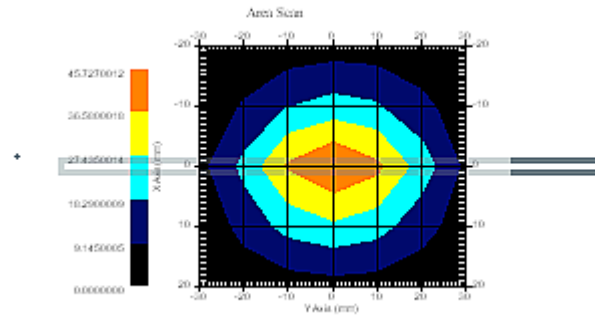
Probe Data
Name : APREL
Model : E-020
Type : E-Field Triangle
Serial No. : 225
Last Calib. Date : 13-Jan-2011
Frequency : 1900.00 MHz
Conversion Factor: 5.6

Measurement Data
Crest Factor : 1
Tissue Temp. : 21.00 °C
Ambient Temp. : 22.00 °C
Set-up Date : 18-May-2011
Area Scan : 5x7x1 : Measurement x=10mm, y=10mm, z=4mm
Zoom Scan : 5x5x8 : Measurement x=8mm, y=8mm, z=4mm

Other Data
DUT Position : Touch
Separation : 0



Project Number: 5594 V2
FCC ID: TPO-OTD36



1 gram SAR value : 39.654 W/kg
Zoom Scan Peak SAR : 77.268 W/kg

SAR-Z Axis at Hotspot x:0.14 y:-0.22

