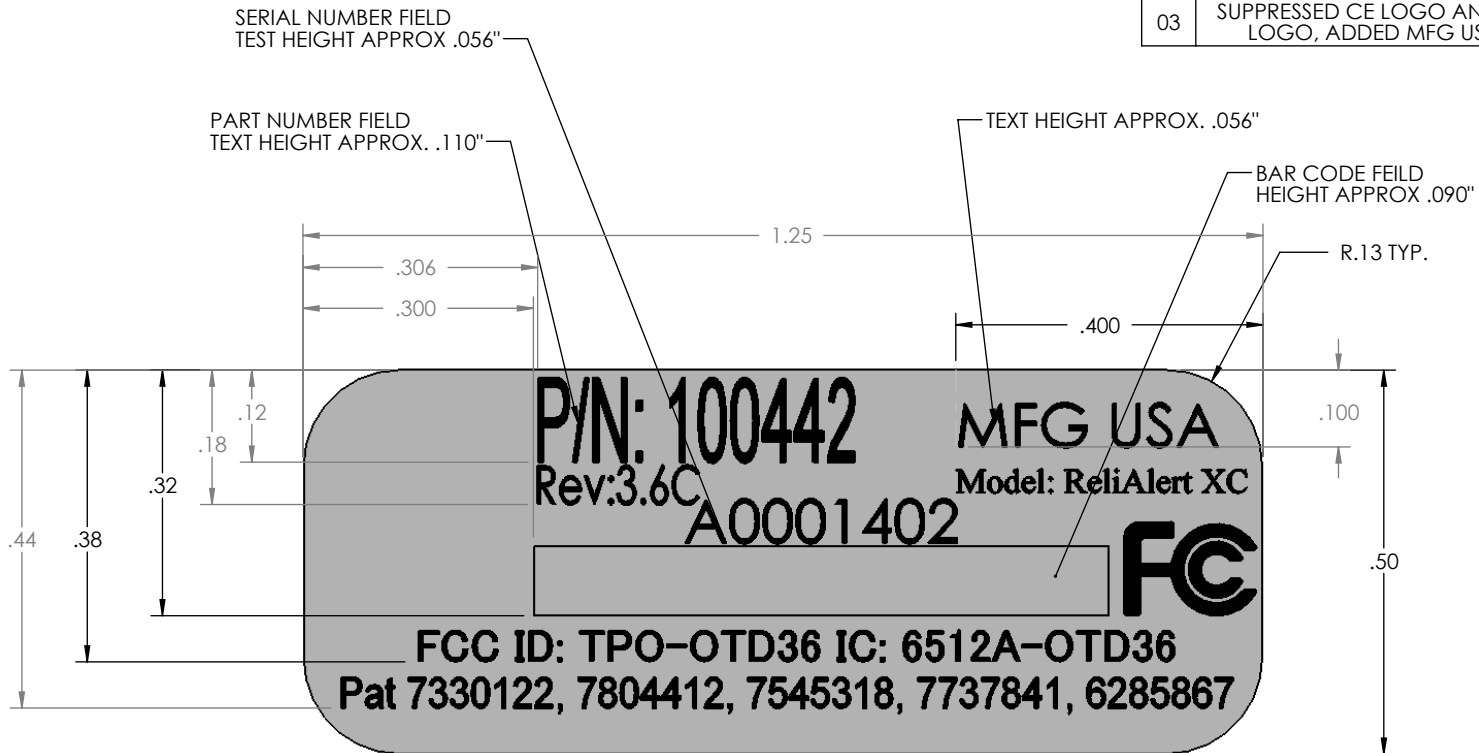


REV.	DESCRIPTION	DATE
00	NEW RELEASE	1/12/2010
01	CHANGED LAYOUT AND FONT HEIGHTS, ADDED LOGO	7/15/2010
02	ADDED CE LOGO AND MOVED THINGS TO ACCOMMODATE	2/7/2011
03	SUPPRESSED CE LOGO AND SA LOGO, ADDED MFG USA	3/18/2011



NOTES:

1. FONT: ARIAL UNICODER OR EQUIVALENT, CENTER TEXT AS SHOWN
2. BARCODE STYLE: CODE 128
3. RAW LABEL: ABLE LABEL P/N 1.25-.5-TC-0 (WHITE POLYESTER, ACRYLIC ADHESIVE)
4. PRINT P/N, SERIAL #, AND BARCODE FIELDS PER WORK INSTRUCTIONS
5. PRINT FCC AND PATENT INFORMATION AS SHOWN ON THIS DRAWING
6. EUROPEAN CERTIFICATION LABEL IS STANDARD AND LOCATED AS DIMENSIONED

THE INFORMATION CONTAINED IN THIS DRAWING IS THE SOLE PROPERTY OF SECURE ALERT. ANY UNAUTHORIZED USE, REPRODUCTION IN PART OR WHOLE WITHOUT THE WRITTEN PERMISSION OF SECURE ALERT, IS PROHIBITED.

CAD GENERATED DRAWING, DO NOT MANUALLY UPDATE

APPROVALS	DATE
DRAWN PCO	02/07/2011
ENGINEERING PCO	02/07/2011
APPROVED	
DO NOT SCALE DRAWING	FINISH 125 <input checked="" type="checkbox"/>

UNLESS OTHERWISE SPECIFIED, DIMENSIONS ARE IN INCHES AND TOLERANCES ARE:		
FRACTIONS	DECIMALS	ANGLES
± 1/32	.XX ± .02	± 0° 30'
	.XXX ± .01	
MATERIAL	NA	



9736 SOUTH 500 WEST
SANDY, UTAH 84070

SECUREALERT

LABEL, PRINTED

SIZE	DWG. NO.	REV.
A	10075	03
SCALE	3:1	
		SHEET 1 OF 1