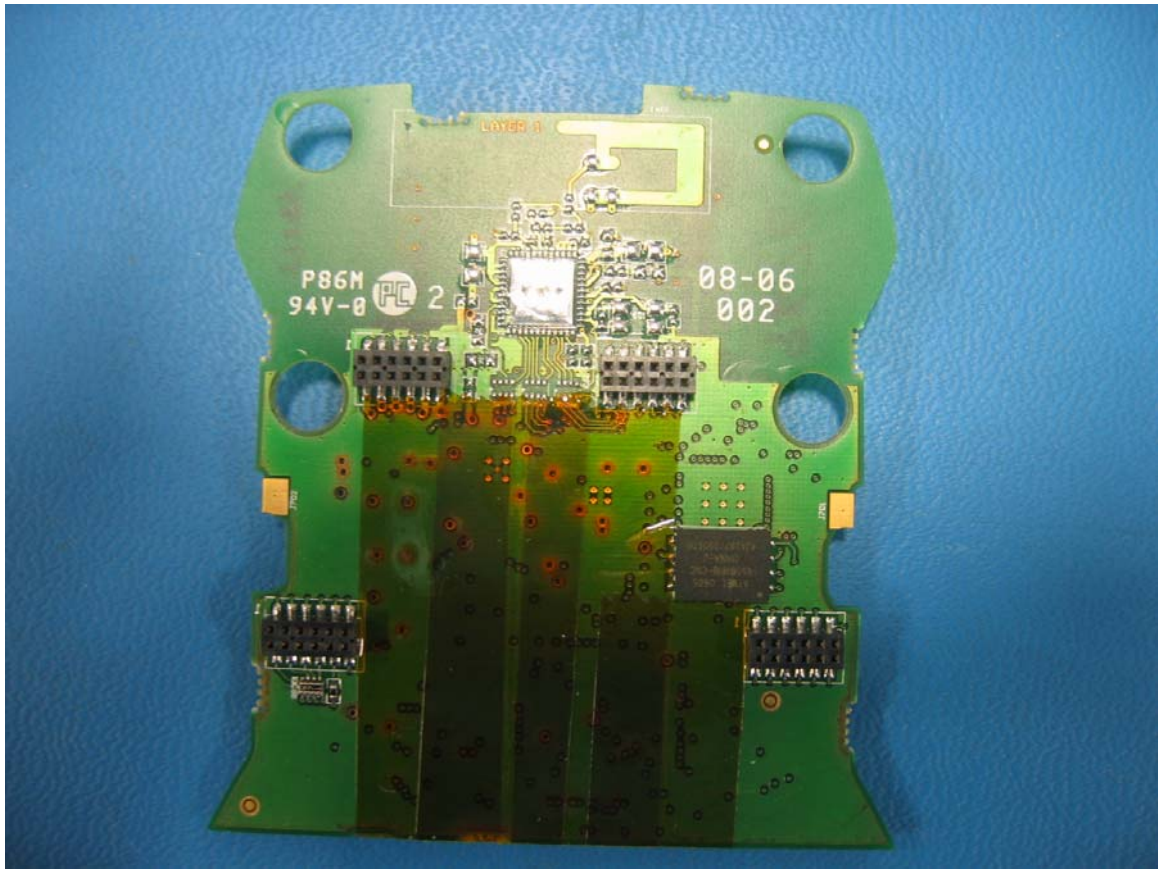




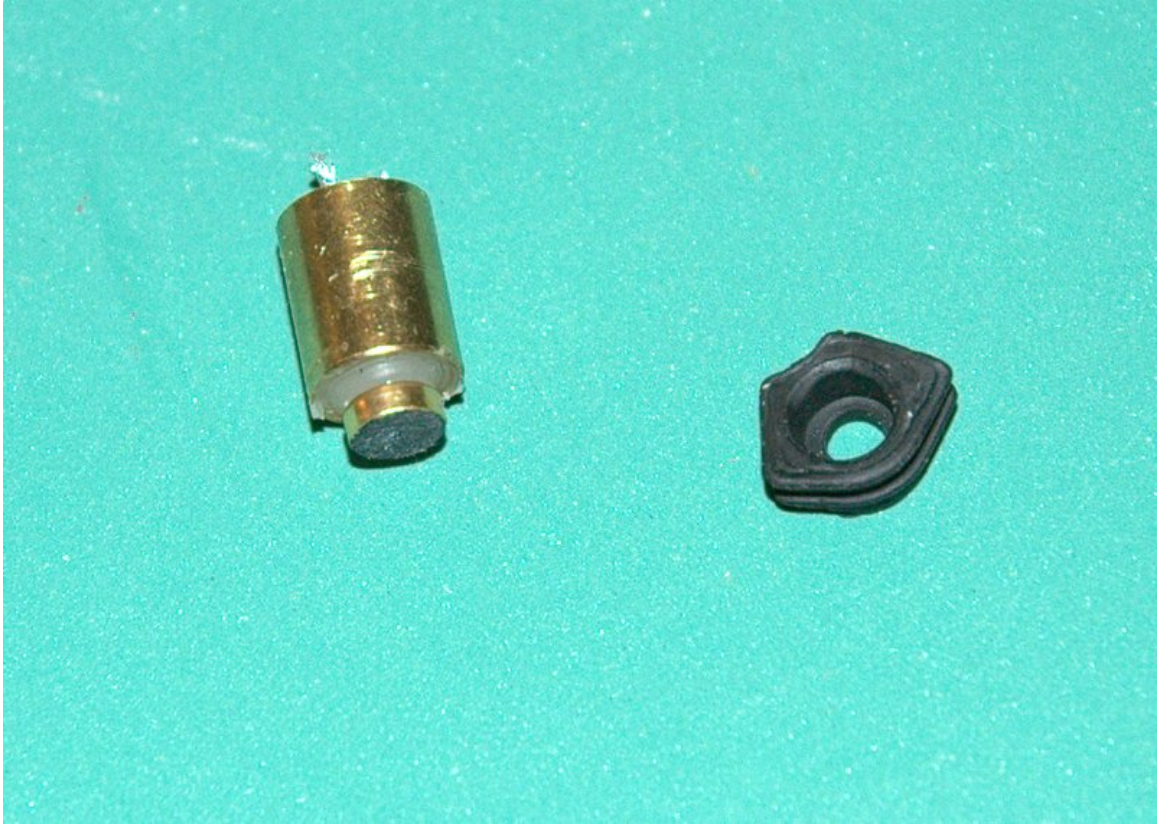
Antenna & SIM in main shell



Antenna PCB bottom



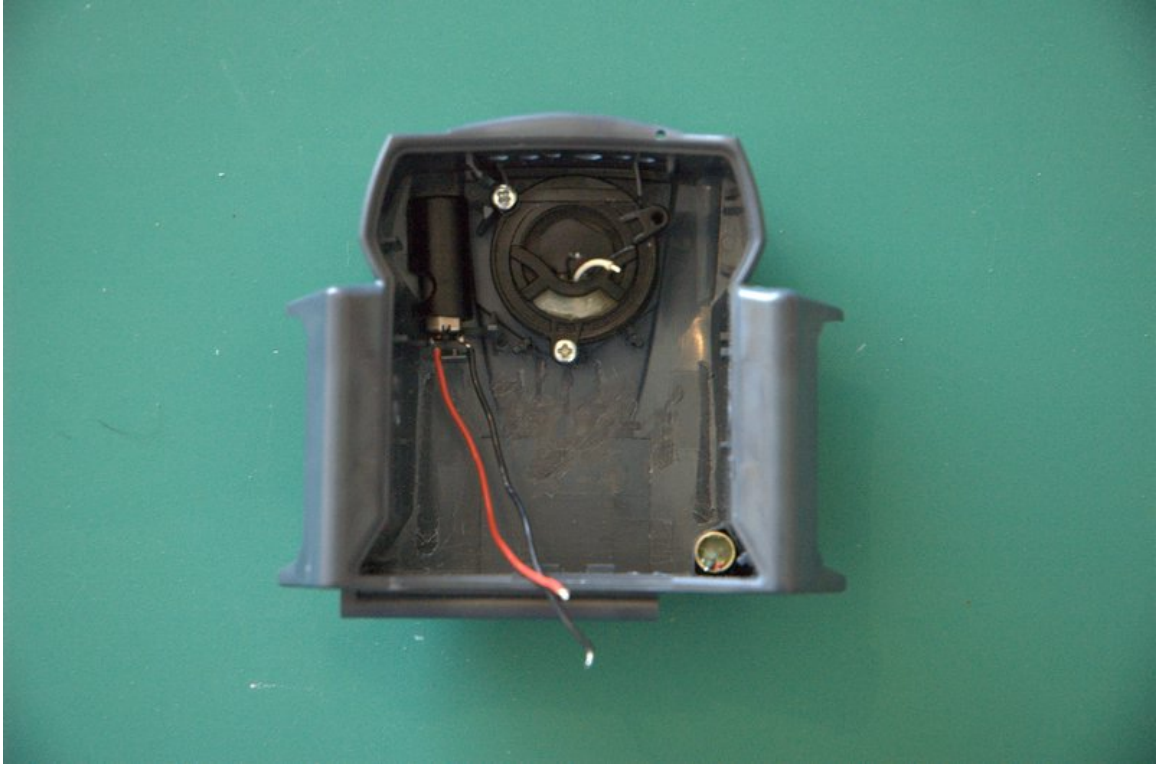
Antenna PCB top



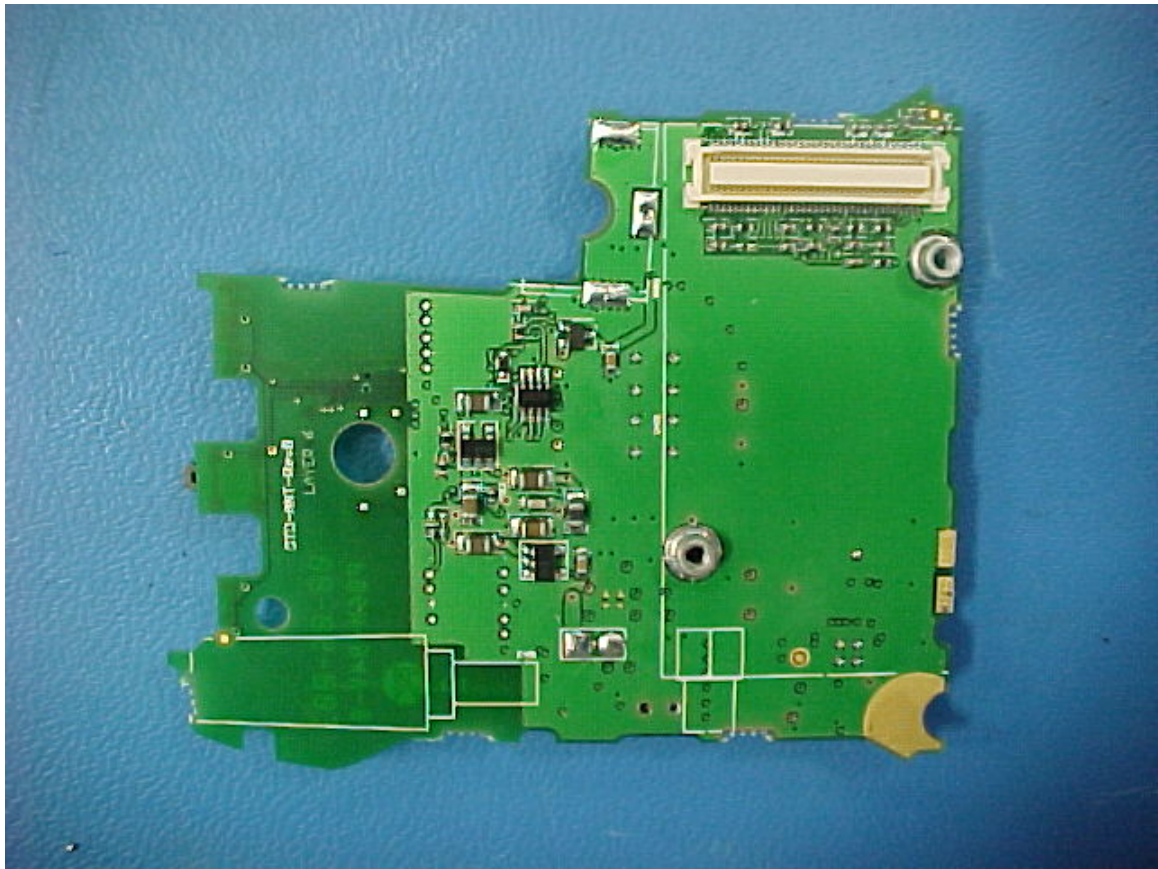
Microphone assembly



Microphone in main shell



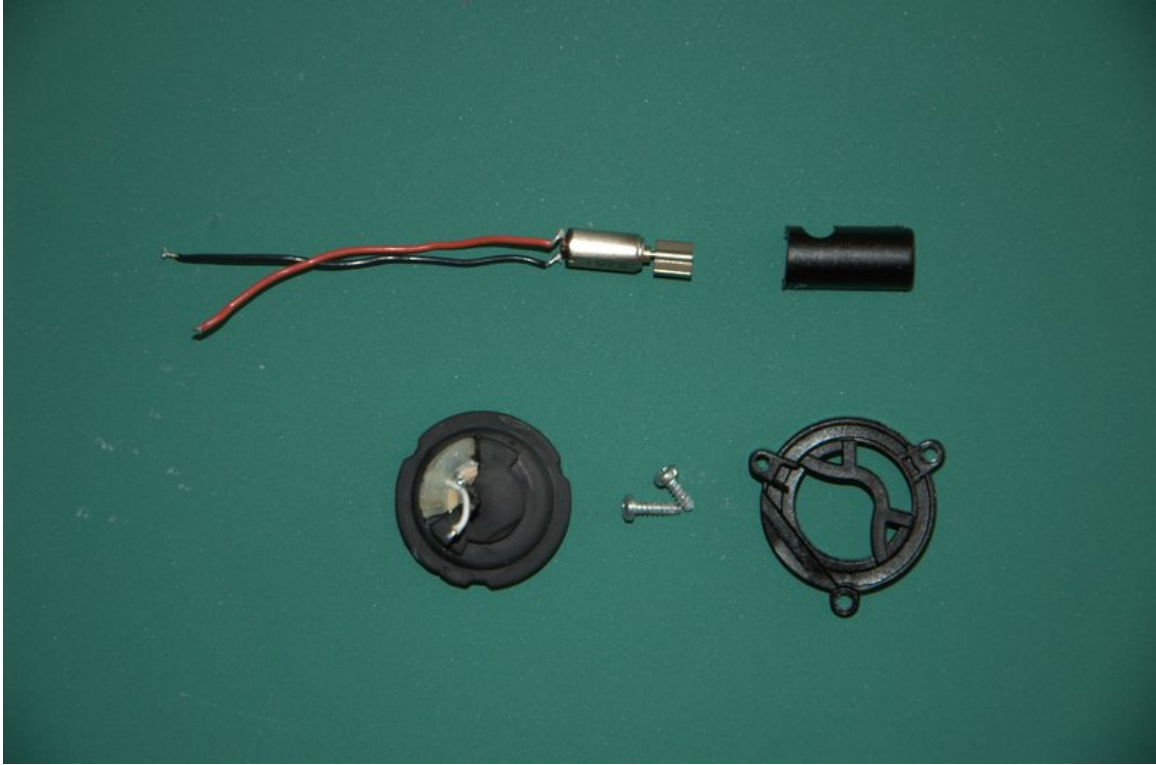
Open front of the shell



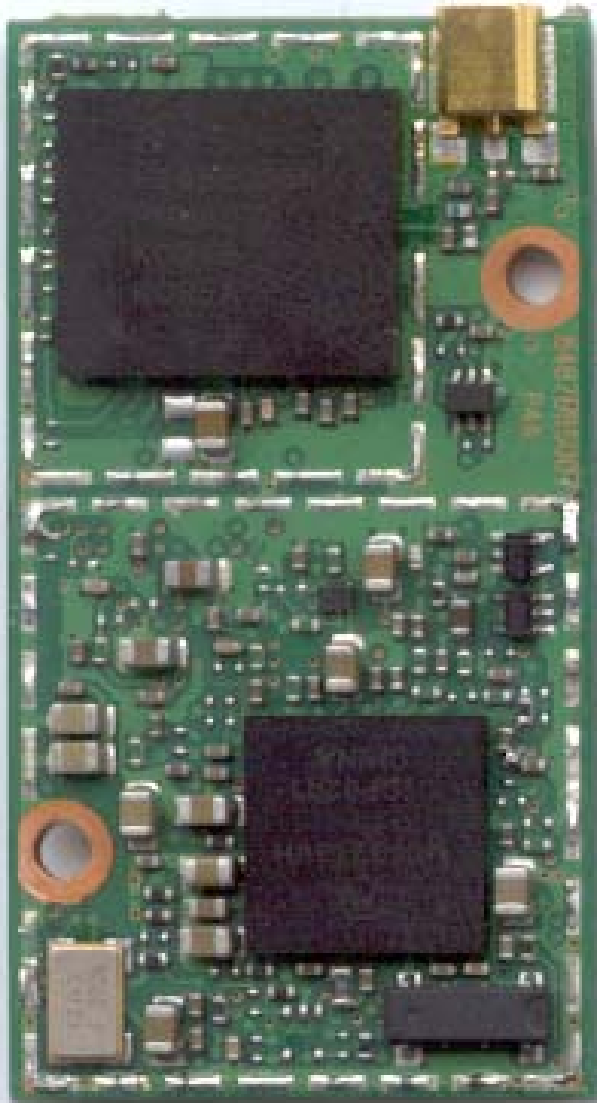
SIM PCB bottom



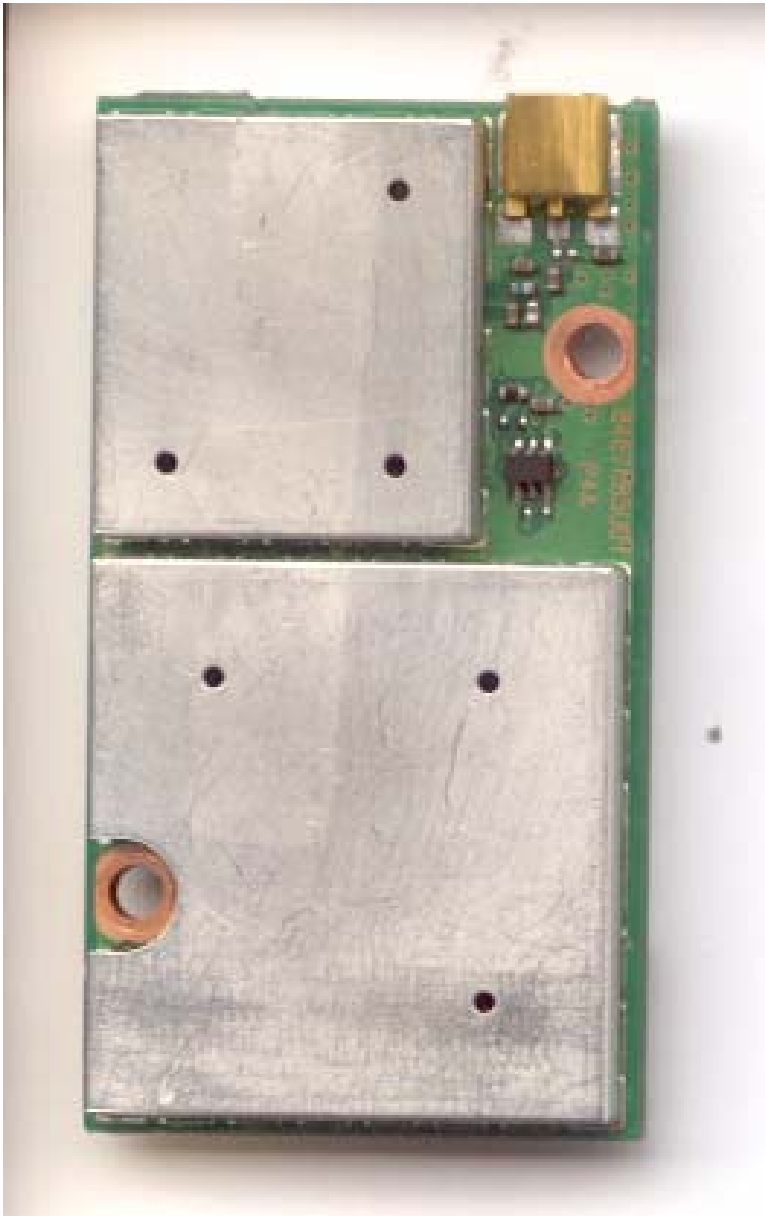
SIM PCB with supercap



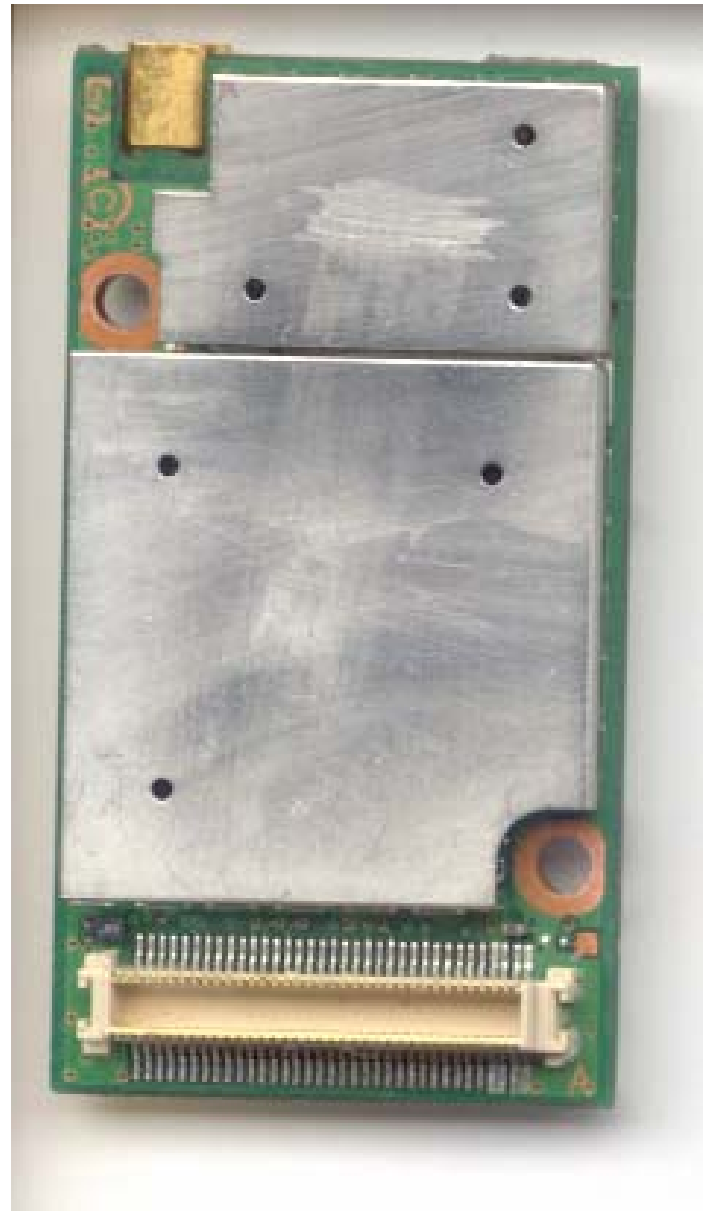
Vibrator and Speaker



Front View (Shields Removed) Rear View (Shields Removed)



Front View (With Shield)



Rear View (With Shield)