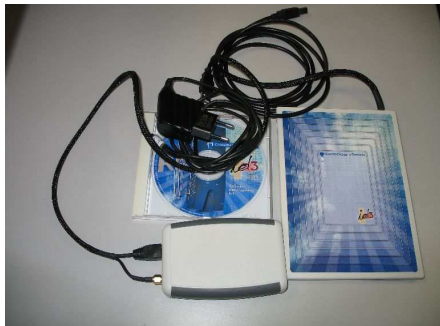


Id3 Contactless 13.56MHz Reader: INSTALLATION GUIDE

1



Check that the kit contains:

- id3 contactless reader
- 12V power supply
- USB cable
- Installation CD

2



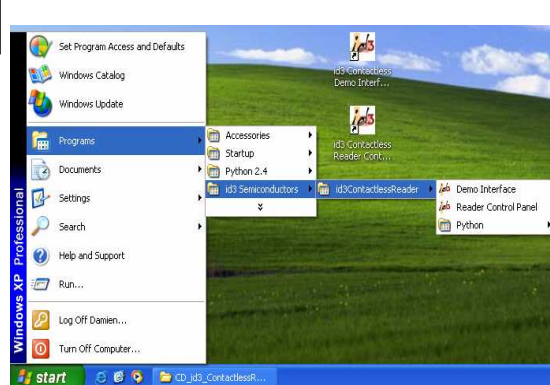
- **Do not plug the reader yet !**
- **Insert CD and wait for the setup.**
- **Select installation of driver and software**

3



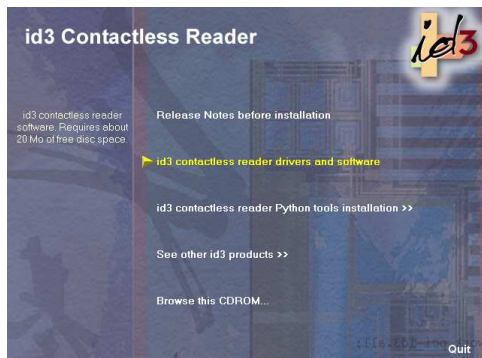
- **Follow the installation wizard.**

4



- **Shortcuts to software are placed on the Desktop and in Start menu**
- **Do not start them immediately.**

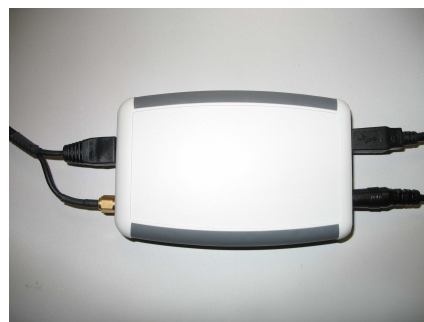
5



Optional: installation of Python

- **Select "Python tools installation"**
- **Install Python2.4, module and script examples**

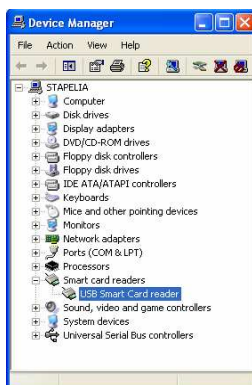
6



Plug the reader:

1. **Connect the USB**
 2. **Connect the 12V power supply**
- If asked: drivers are under:
INSTALLDIR/Drivers**

7



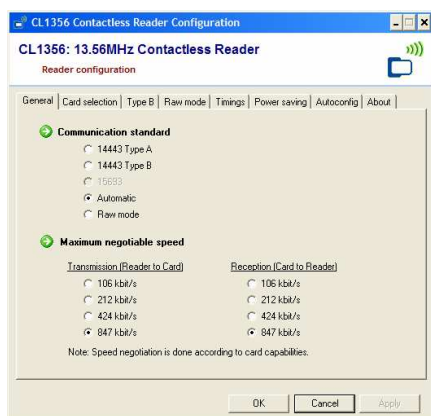
- Check that the reader is well recognized by Windows™ in the device manager.

8



- Start the reader control panel application.
- You may be asked to unplug and re-plug the reader to finish the installation.

9



- Configure the reader using the reader control panel

10



- Start the demonstration application to test reader and cards