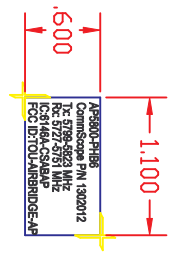
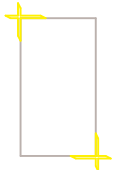


Option SM – Strand Mount Internal Antenna



ARTWORK

ADHESIVE DETAIL

FABRICATION DETAIL

NOTES:

1. MATERIAL: 0.01" THICK HARDCOAT LEXAN (HP92W) WITH 300LSE ADHESIVE APPLIED TO BACK
2. SILKSCREEN AS PER ARTWORK. LAYER STRUCTURE:
 - LEXAN
 - BLACK - TEXT
 - SILVER - BACKGROUND
 - ADHESIVE - FULL COVERAGE
3. DIE CUT TO SHAPE AS PER FABRICATION DETAIL.

REV	DESCRIPTION	D/M/Y	CLW	DATE	DWN BY	APPRV'D BY
01	INITIAL RELEASE					

NOTES (UNLESS OTHERWISE SPECIFIED):

1. DIMENSIONS ARE IN INCHES
2. TOLERANCES AS PER LIMITS UNLESS INDICATED OTHERWISE ON DRAWING
3. MACHINE FINISH 125 MICRO INCH RMS
4. INTERNAL RADI 0.05
5. BREAK SHARP CORNERS .005 TO .015

LIMITS
 1. LINEAR DIMENSIONS: X, Y = ± .020
 Z = ± .010
 XXX = ± .005
 2. ANGLES ± 1/2°

THIRD ANGLE PROJECTION

Vcom Inc.

150 Cardinal Place
 Saskatoon, Saskatchewan
 Ph: (306) 955-7075
 Fax: (306) 955-9919

AP5857

COMMSCOPE POLE MOUNT

SHEET	FILE NAME:	DRAWING NO.:	REV.
B	ZL3B001001.DWG	ZL3B0010	01
PLOT SCALE: N.T.S.	DWG SCALE: 1:1	DATE: 21/10/2005	SHEET 1 OF 1