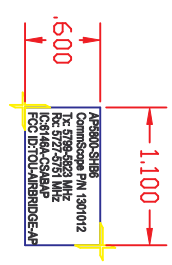
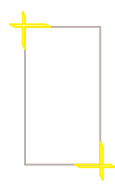


Option SM – Strand Mount Internal Antenna



ARTWORK

ADHESIVE DETAIL

FABRICATION DETAIL

NOTES:

1. MATERIAL: 0.01" THICK HARDCOAT LEXAN (HP92W) WITH 300LSE ADHESIVE APPLIED TO BACK
2. SILKSCREEN AS PER ARTWORK. LAYER STRUCTURE:
 - LEXAN
 - BLACK - TEXT
 - SILVER - BACKGROUND
 - ADHESIVE - FULL COVERAGE
3. DIE CUT TO SHAPE AS PER FABRICATION DETAIL.

REV	DESCRIPTION	DATE	DWN BY	APPRV'D BY
02	SPEC STRAND MOUNT, COMMSCOPE P/N, CHG'D FCC, IC, OPTIION	D/M/Y	CLW	
01	INITIAL RELEASE	05/05/05	RCM	

NOTES (UNLESS OTHERWISE SPECIFIED):

1. DIMENSIONS ARE IN INCHES
2. TOLERANCES AS PER LIMITS UNLESS INDICATED OTHERWISE ON DRAWING
3. MACHINE FINISH 125 MICRO INCH RMS
4. INTERNAL RADI R0.5
5. BREAK SHARP CORNERS .005 TO .015

LIMITS
 X, Y = ± .020
 Z = ± .010
 XXX = ± .005

THIRD ANGLE PROJECTION

Vcom Inc.

150 Cardinal Place
Saskatoon, Saskatchewan
Ph: (306) 955-7075
Fax: (306) 955-9919

AP5857

COMMSCOPE STRAND MOUNT

SHEET	FILE NAME:	DRAWING NO.:
B	ZL3B000902.DWG	ZL3B0009
PLOT SCALE: N.T.S.	DWG SCALE: 1:1	DATE: 04/21/2005
		SHEET 1 OF 1