

## PCS, 2.4 GHz ISM, MMDS and 5.8 GHz ISM/UNII Omnidirectional Base Station Antenna Series

The MAXRAD XtremeWave™ wireless broadband omnidirectional antennas are designed to provide maximum performance and reliability under the toughest weather conditions. These antennas feature a UV stable, vented radome that provides ultimate protection against weather elements. The line includes MMDS, ISM, UNII and PCS models with gains ranging from 4 to 12 dBi. These antennas can be mast, wall or ceiling mounted.

### General Specifications:

Omnidirectional base station antennas

### Radome Material:

UV resistant pultruded fiberglass

### Polarization:

Vertical

### Nominal Impedance:

50 Ohms

### Mounting Base Diameter:

1.25 inches (all models except MFB24012)

1.5 inches (model MFB24012)

### Mounting Method (sold separately):

MMK1924 - L-bracket mount for wall or pipe mount (all models, except MFB24010 and MFB24012)

MMK8 - Aluminum extruded bracket for mast mounting (all models, except model MFB24012)

MMK11 - Ceiling mount bracket (for MFB24004, MFB24006 and MFB24008 only)

MMK12 - Heavy duty bracket for mast mounting the MFB24012

MMK14 - Light duty mounting clamp for MFB24012

### Termination:

N female standard with all models, except MFB24012 and MFB58009PTNM

N female, reverse polarity and reverse threaded connectors optional

16" RG-213 pigtail with N female connector for model MFB24012 only

5' LMR400 pigtail with N male connector for model MFB58009PTNM only

### Features and Benefits:

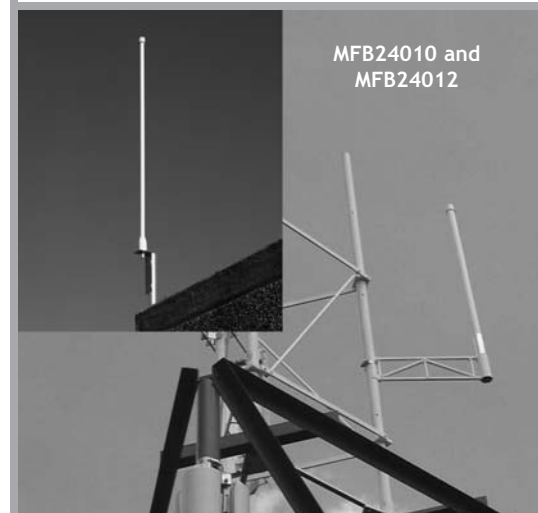
- UV stable, pultruded fiberglass radome. Allows outdoor installation even in harsh climates.
- Vented system design. Provides reliable performance by protecting the electrical design against extreme moisture and/or temperatures.
- Thread relief on connector (all models, except MFB24012 and MFB58009PTNM which have pigtails). Improved accessibility for taping reduces installation time and improves overall effectiveness.
- Internal o-ring seal in the base of the antenna with integrated connector at the base. Assures a watertight seal to prevent water from migrating into the antenna connector (all models, except MFB24012 which has a pigtail).
- Electrical downtilt options on select models. Provide system planners flexibility in challenging operating environments.



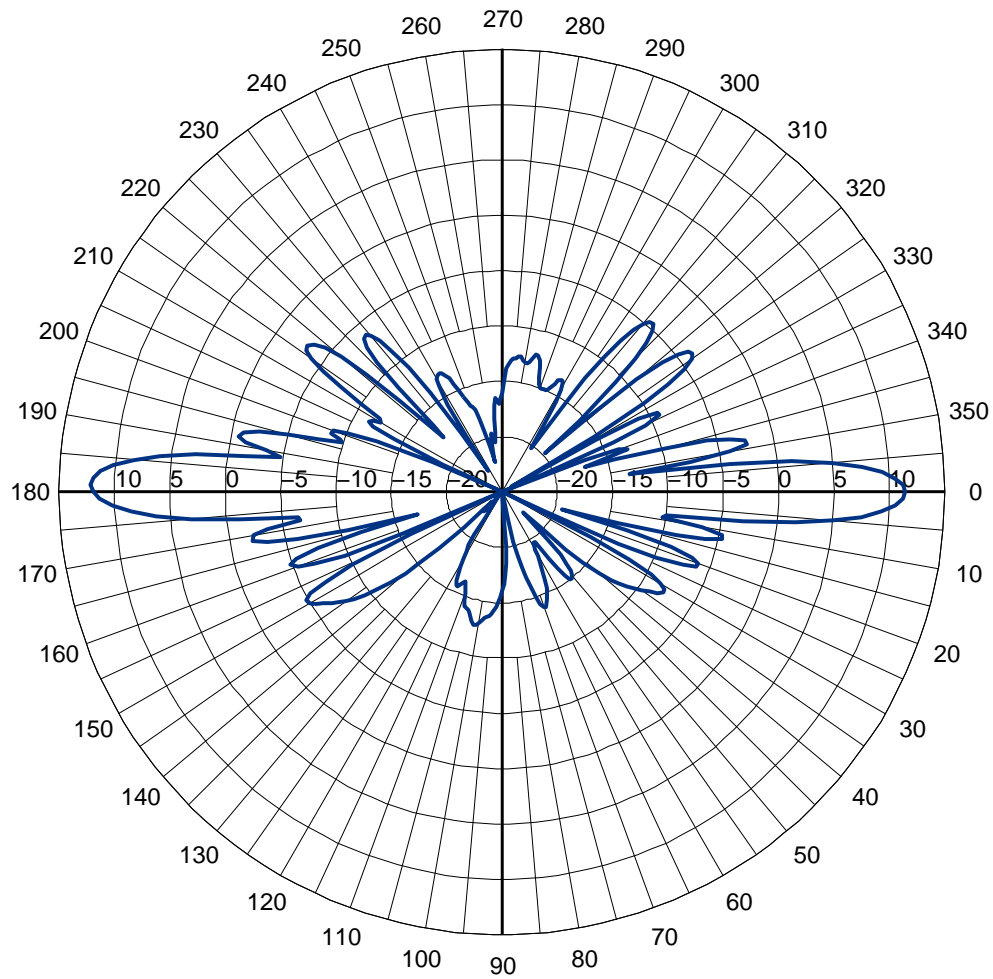
XtremeWave™ MFB24012



XtremeWave™ Models 25007 (MMDS), MFB58009 (5.8 GHz ISM) and MFB19008A (PCS), MFB24006 and MFB24008 (2.4 GHz ISM) Antennas



MFB24010 and MFB24012



**MFB24012 Elevation Cut**