

C-130 Mojo Access Point

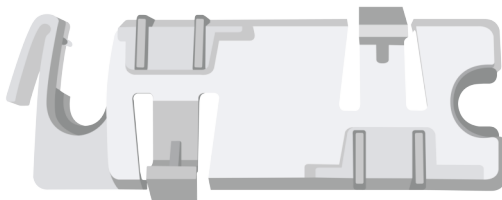
Quick Start Guide

Package Contents

The C-130 package must contain the following components.

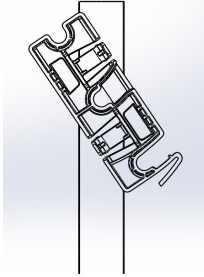


C-130

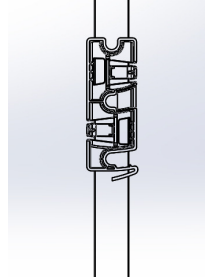


15/16" (24mm) Mounting Bracket

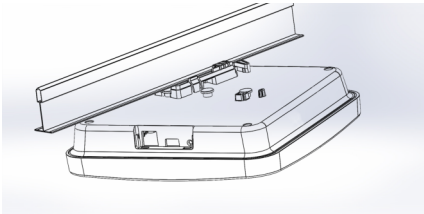
Mounting the C-130



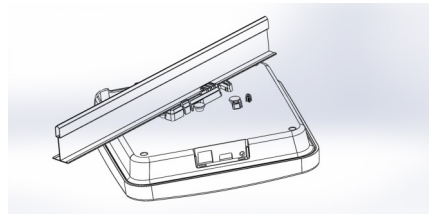
1. Affix bracket to T - Grid.



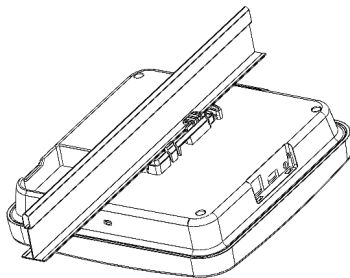
2. Rotate bracket to snap on to T- Grid.



3. Place the first mounting post on the rear-side of the device on to the lower notch of the bracket.



4. Rotate the device such that the center mounting post fits in to the center notch on the bracket.



5. Ensure that all the mounting posts on the rear-side of the device are snapped in to the respective notches on the bracket.

Getting the C-130 Online

Step 1: Power Up the Device

Plug one end of an Ethernet cable into the PoE+ (802.3at) switch or injector and the other end into the Ethernet/PoE+ port on the C-130. Ensure the PoE+ source you are using is turned ON.

Note: You can also use regular PoE (802.3af). However it will disable some features. To know more refer to C-130 Installation Guide.

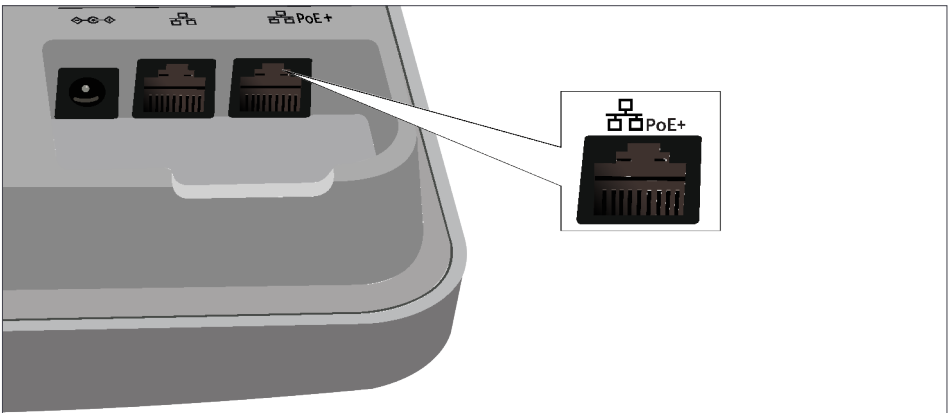
OR

As an alternative to PoE+, you can insert a compatible power adaptor plug into an AC power outlet and the other end into the power input port on the C-130.

Warning: If you are not using PoE+, ensure that you use only an AC power adaptor supported by the C-130 access point (AP).

Step 2: Connect the Device to the Network

If you are using a PoE+ injector, make sure the data connection is plugged into a suitable switch port with proper network connectivity.



Step 3: Check the LED Status

After the device is powered ON and connected to the network, a few minutes will pass until the Power/Ethernet (small globe) turns solid GREEN. This indicates the AP is online and operational.



Troubleshooting

After the C-130 is connected to the network and powered ON, if the LED for Power/Ethernet is not **Solid Green**, the AP has encountered a problem or is in the upgrade process. The following guidelines may help you to quickly diagnose and fix the problem.

LED Status			What does it mean?
Power/ Ethernet	Wi-Fi 2.4GHz	Wi-Fi 5GHz	
Solid Orange	Any	Any	The AP does not have an active Ethernet link ¹
Fast Blink Green	Any	Any	The AP did not receive a valid IP address via DHCP ²
Slow Blink Green	Any	Any	The AP is unable to connect to the Mojo Cloud Services or Mojo Server ³
Slow Blink Orange	Any	Any	The AP is being upgraded

Note: If Power/Ethernet LED is Yellow, the device is plugged into a non-Gigabit Ethernet switch port. Using an 802.11 ac Access Point on a 100Mb or 10Mb Ethernet connection can cause performance issues in the WLAN. Use Gigabit Ethernet uplinks when possible.

1. Check whether the Ethernet cable is plugged into the correct port (PoE+) on the C-130 and the other end of the cable is plugged into an Ethernet jack or port on a switch that is turned ON.
2. If the C-130 did not receive a valid IP address from the DHCP server, check whether the DHCP server is ON and available on the VLAN/subnet to which the AP is connected. If the AP still fails to get a valid IP address, reboot the device once to see if the problem gets resolved.
3. If you are using Mojo Cloud Services, then open the TCP port 443 (SSL). If you have an on-premises installation, then open the ports UDP 3851 and port 80. If you are using a Proxy, Web Accelerator or URL Content Filter in between the AP and the Internet, ensure the settings allow communication between the AP and Mojo Cloud Services. If your configuration requires you to specify an exact IP address or IP range for Mojo Cloud Services, please contact Technical Support.

If you are still unable to resolve the problem, contact the local Mojo Networks Sales Engineer or 24/7 Mojo Networks Technical Support. **Tel: +1 (650) 641 0027 Email: support@mojonetworks.com**



Mojo Networks, Inc. 339 N. Bernardo Avenue #200, Mountain View, CA 94043

T +1.877.424.7844 T 650.961.1111 F 650.961.1169 www.mojonetworks.com info@mojonetworks.com

© 2016 Mojo Networks, Inc. All rights reserved. Mojo Networks and the Mojo Networks logo are trademarks, and Mojo is a registered trademark of Mojo Networks, Inc. All other trademarks mentioned herein are properties of their respective owners. Specifications are subject to change without notice.