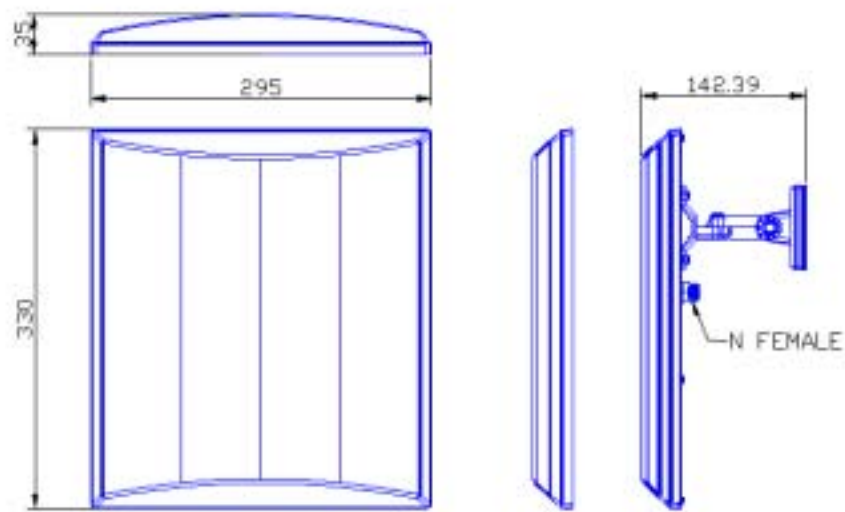


PA-L01 2.4GHz 18dBi panel antenna



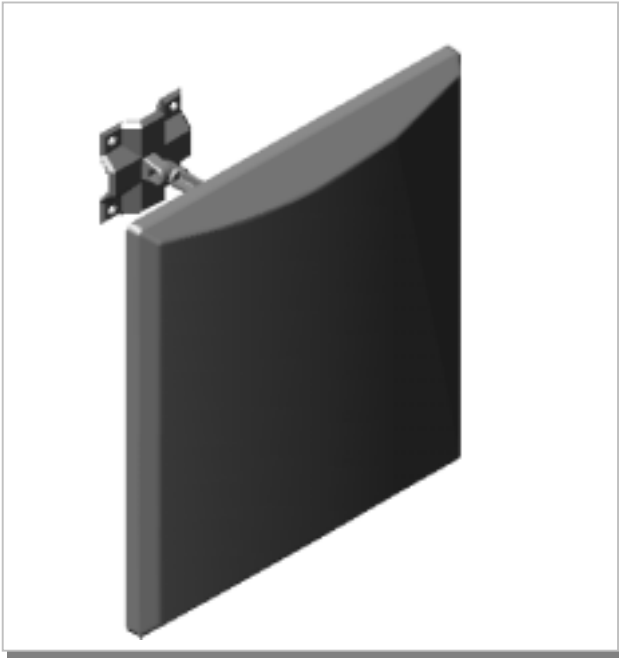
Electrical Specifications:

Frequency Range	2.4~ 2.4835 GHz
VSWR	≤ 2.0
Impedance	$50\Omega \pm 5\Omega$
Gain	18 dBi
Polarization	Vertical
Power Handling	10 Watt
Beam Width	H: 25.8 / E: 20.7

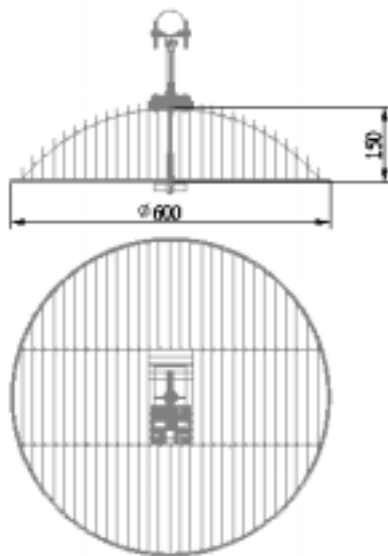
Mechanical Specifications:

Connector	N Female
Operation Temp.	-30 ~ +60
Material	Radome: ABS Mount: Zinc alloy
Dimension (L*W*H)	330*295*35 mm
Weight	1344g \pm 20g (w/ mount)
Color	WHITE

3D Illustration



GRD-001 2.4GHz 24dBi Grid antenna



Antenna

Antenna + mount

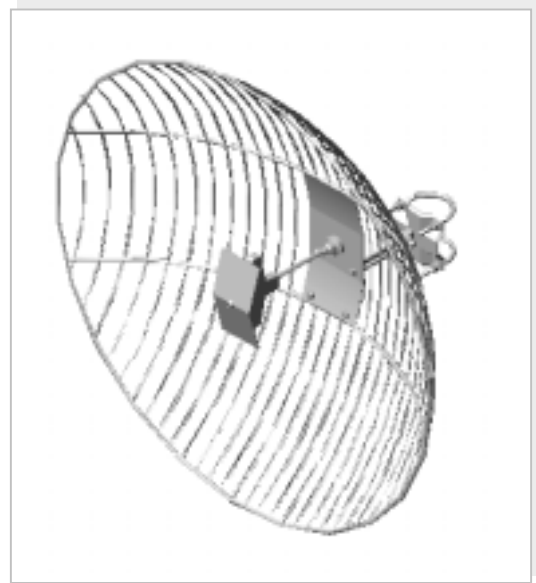
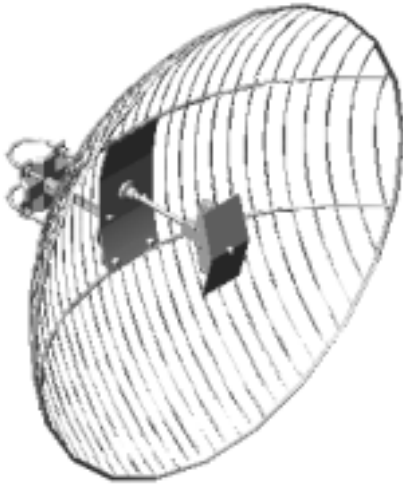
Electrical Specifications:

Frequency Range	2.4 ~ 2.4835GHz
VSWR	≤ 2.0
Impedance	50Ω ± 5Ω
Gain	24 dBi
Polarization	Vertical
Power Handling	10 Watt
Beam Width	H: 7.7° / E: 6.5°

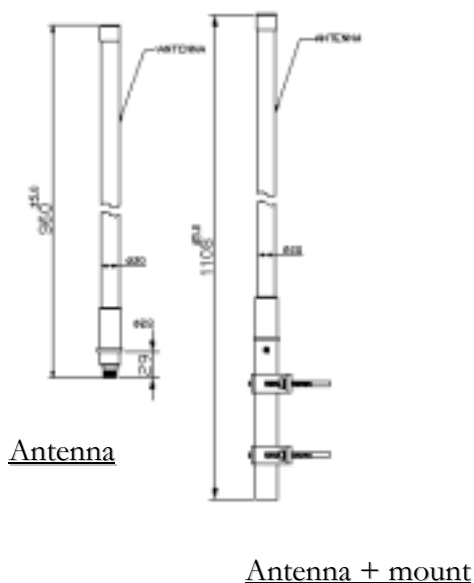
Mechanical Specifications:

Connector	N Female
Operation Temp.	-30 ~ +60
Cable & Length	
Material	Radome: ABS Base: Mount: Plating Zinc iron plate
Dimension (L*W*H)	600*150 mm (with mount)
Weight	2860g ± 50g (with mount)
Color	WHITE

3D Illustration



OB-003 2.4GHz 12dBi Omni antenna



Electrical Specifications:

Frequency Range	2.4 ~ 2.4835GHz
VSWR	≤ 2.0
Impedance	$50\Omega \pm 5\Omega$
Gain	12 dBi
Polarization	Vertical
Power Handling	10 Watt
Beam Width	H: 360° / E: 10°

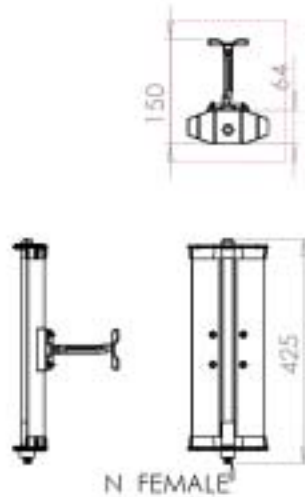
Mechanical Specifications:

Connector	N Female
Operation Temp.	-30 ~ +60
Cable & Length	
Material	Radome: Fiberglass Base: Copper Mount: Aluminum
Dimension (L*W*H)	960*28 mm (with mount)
Weight	720 g \pm 20 g (with mount)
Color	WHITE

3D Illustration



SA-101 2.4GHz 90° SECTOR ANTENNA



Antenna

Antenna + mount

Electrical Specifications:

Frequency Range	2.4~2.4835GHz
VSWR	≤ 2.0
Impedance	50Ω ± 5Ω
Gain	12 dBi
Polarization	Vertical
Power Handling	10Watt
Beam Width	H: 90° / E:20.2°

Mechanical Specifications:

Connector	N Female
Operation Temp.	-30 ~ +60
Cable & Length	
Material	Radome: Fiberglass Base: Mount: Zinc alloy
Dimension (L*W*H)	425*150*64 mm (with mounting kit)
Weight	2150 g ± 20g (with mounting kit)
Color	Cool Gray 5C

3D Illustration

