

RF Technologies, Inc.

RF2000 Belt Pack

FCC ID#: TOM-RF2000BP

Photo One – Internal

Open for Inspection



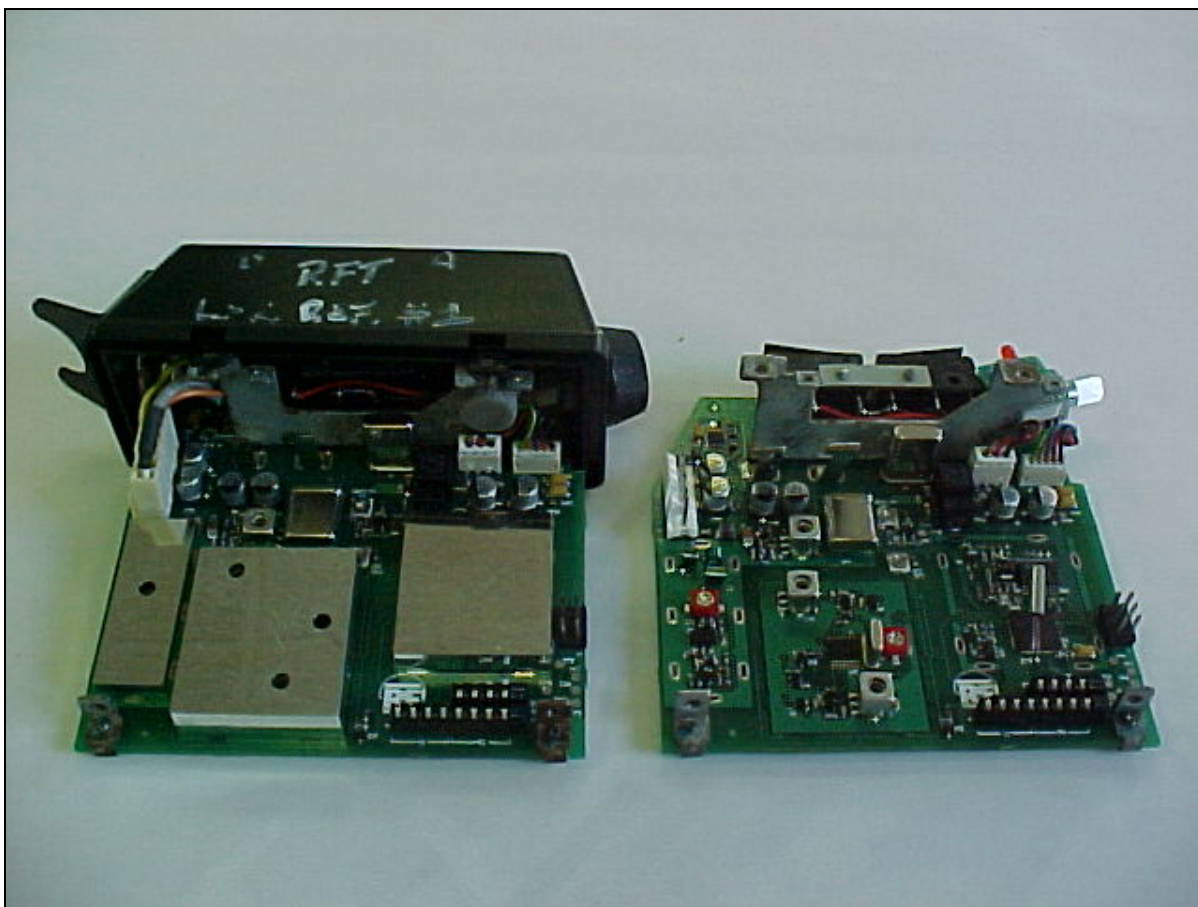
RF Technologies, Inc.

RF2000 Belt Pack

FCC ID#: TOM-RF2000BP

Photo Two – Internal

**Printed Circuit Board Component
Side One with/without Shields**



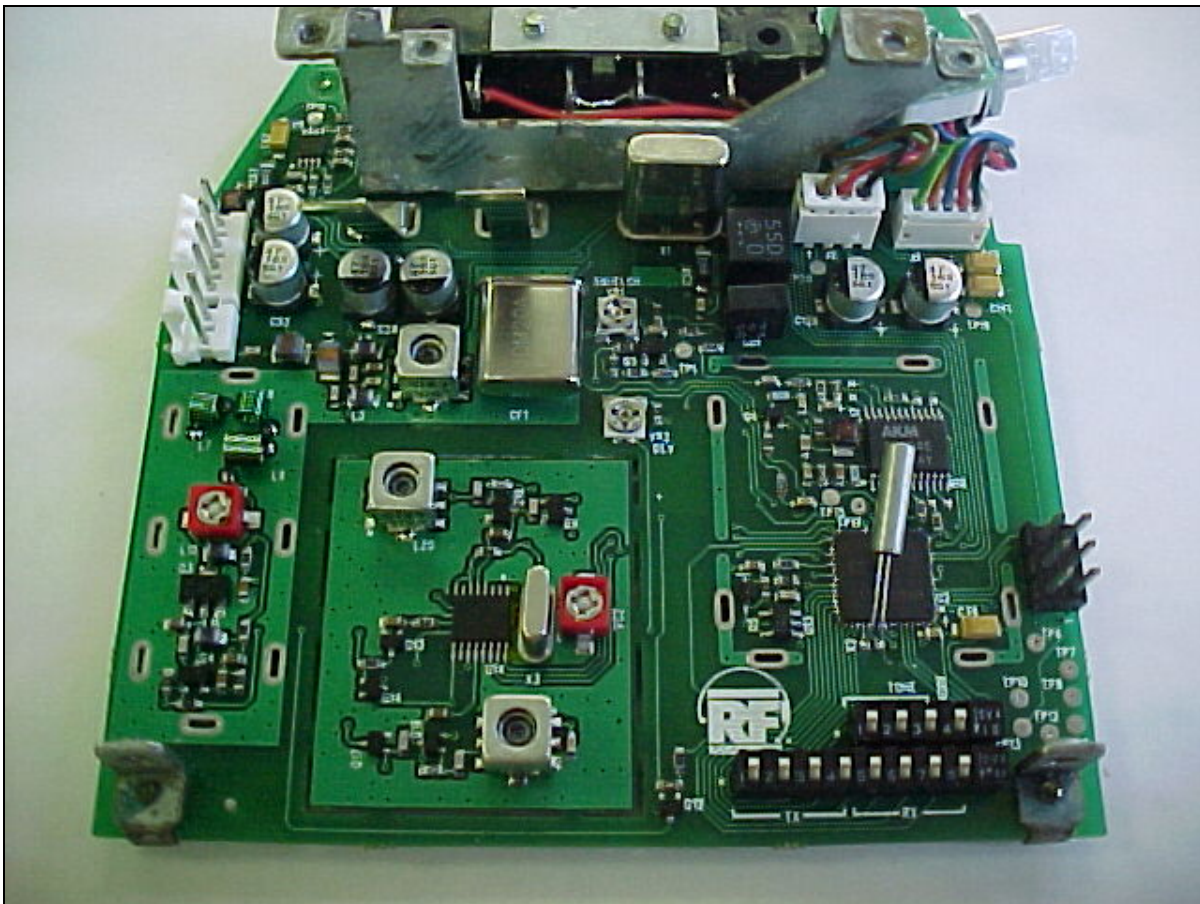
RF Technologies, Inc.

RF2000 Belt Pack

FCC ID#: TOM-RF2000BP

Photo Three – Internal

**Printed Circuit Board Component
Side One Close-up without Shields**



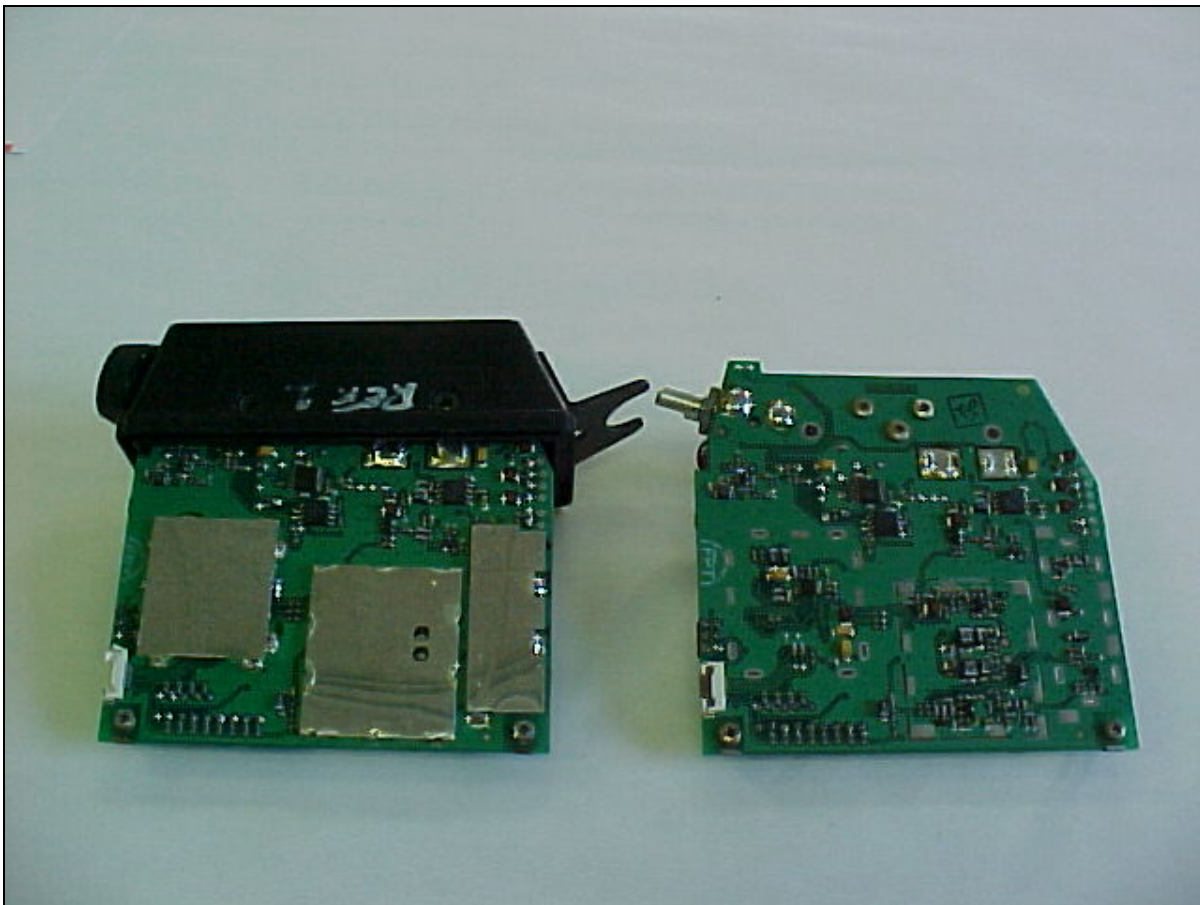
RF Technologies, Inc.

RF2000 Belt Pack

FCC ID#: TOM-RF2000BP

Photo Four – Internal

**Printed Circuit Board Component
Side Two with/without Shields**



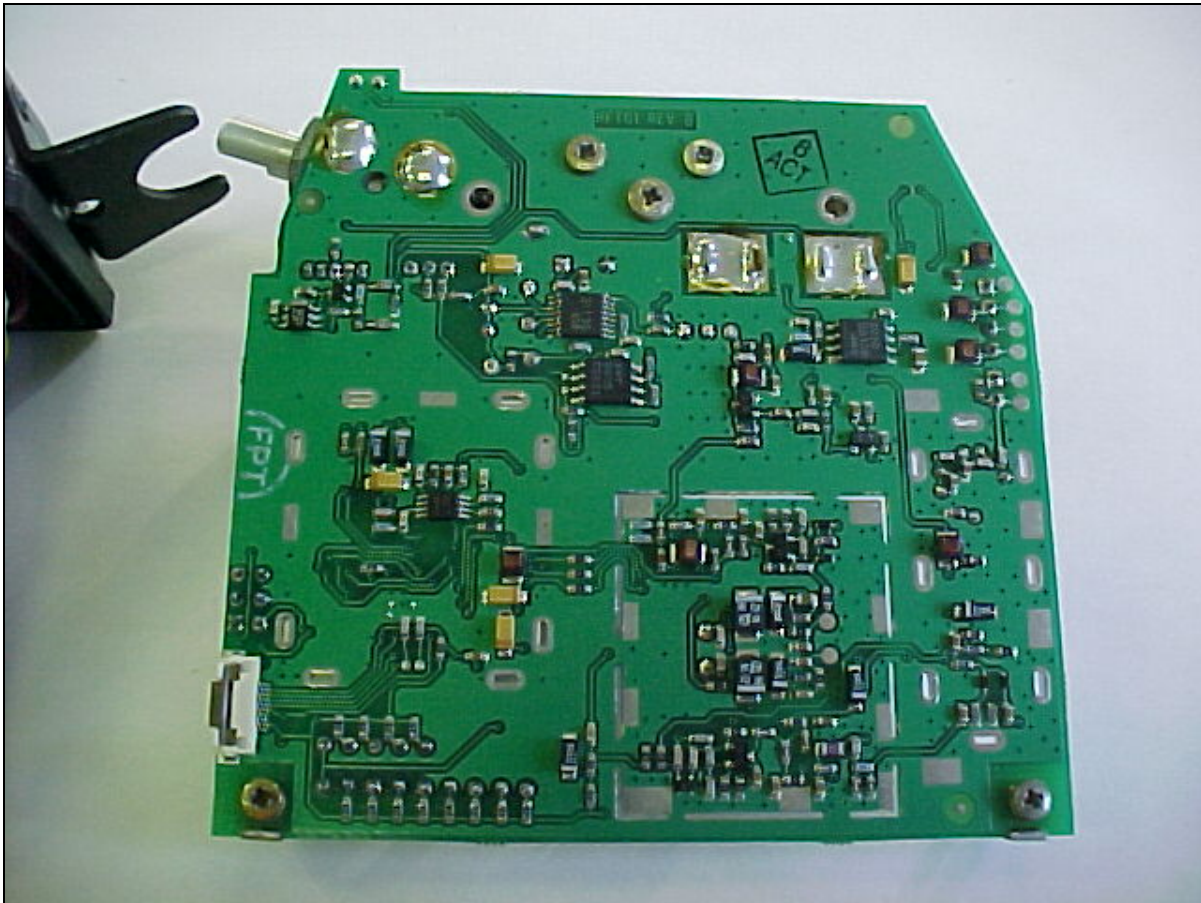
RF Technologies, Inc.

RF2000 Belt Pack

FCC ID#: TOM-RF2000BP

Photo Five – Internal

**Printed Circuit Board Component
Side Two Close-up without Shields**



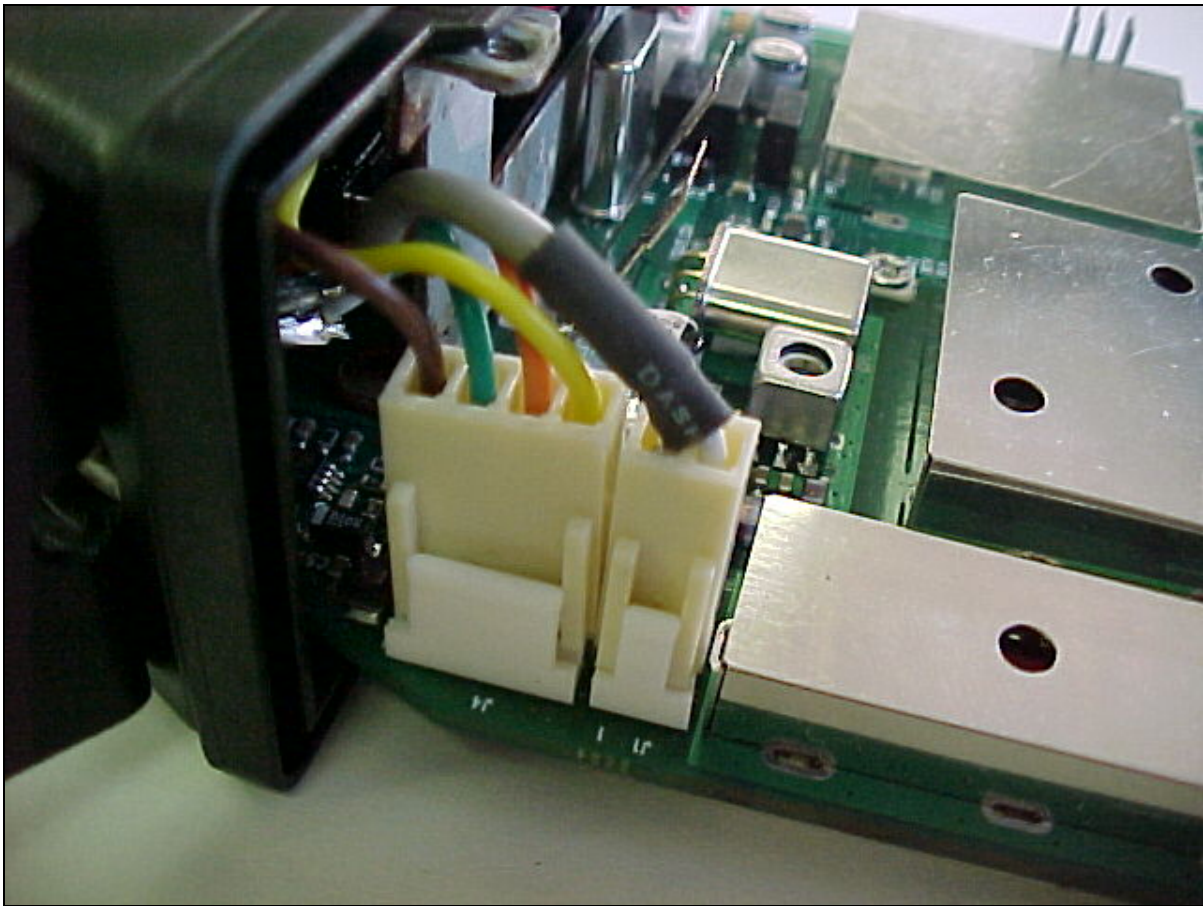
RF Technologies, Inc.

RF2000 Belt Pack

FCC ID#: TOM-RF2000BP

Photo Six – Internal

**Headset Jumper Cables
Function as Antenna Connection**



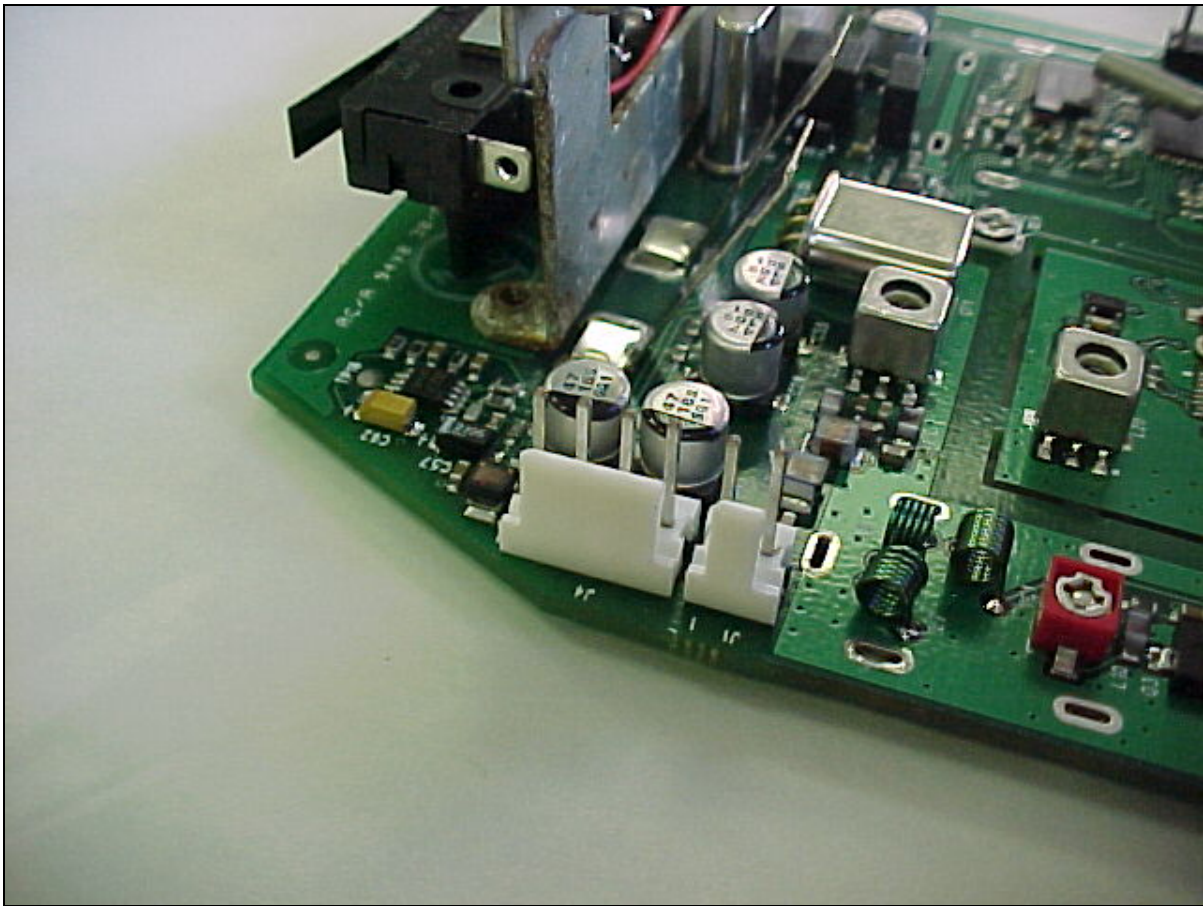
RF Technologies, Inc.

RF2000 Belt Pack

FCC ID#: TOM-RF2000BP

Photo Seven – Internal

**Headset Jumper Cable Connection
Without Cable Connected**



RF Technologies, Inc.

RF2000 Belt Pack

FCC ID#: TOM-RF2000BP

Photo Eight – Internal

Comparison of with/without Headset Connecting Cable

