


VOICCYE **VMP-100** **MATE**

User's Manual





FCC Compliance Statements

Note: This equipment has been tested and found to comply with the limits for a Class B digital device, pursuant to part 15 of the FCC Rules. These limits are designed to provide reasonable protection against harmful interference in a residential installation. This equipment generates, uses and can radiate radio frequency energy and, if not installed and used in accordance with the instructions, may cause harmful interference to radio communications. However, there is no guarantee that interference will not occur in a particular installation. If this equipment does cause harmful interference to radio or television reception, which can be determined by turning the equipment off and on, the user is encouraged to try to correct the interference by one or more of the following measures:

- Reorient or relocate the receiving antenna
- Increase the separation between the equipment and receiver.
- Connect the equipment into an outlet on a circuit different from that to which the receiver is connected.
- Consult the dealer or an experienced radio / TV technician for help.

Warning : You are cautioned that any change or modifications to the equipment not expressly approved by the party responsible for compliance could void your authority to operate such equipment.

1.Voiceye Player layout

1-1. Product Characteristic

- Designed for the people who are blind, visually impaired, partially sighted and illiterate to access to information in all printed matters
- Revolutionary and versatile substitute for all kinds of visual and reading aids, such as Braille, screen readers, magnifiers, and audio books
- Completely portable reading device for decoding and reciting text and audible data encoded in Voiceye symbol

Take advantage of Voiceye mate's many capabilities

- ⊙ Advanced real-time Text to Speech reader
- ⊙ Audio book
- ⊙ Built-in voice recorder
- ⊙ FM radio
- ⊙ Talking clock
- ⊙ Name card and address book

1.Voiceye Player layout

1-1. Product Characteristic

VOICEYE Mate enhances your reading ability by giving you the following features and advantages:

- Completely portable device for decoding and reciting text
- Economical tool for listening to text and music
- High quality voice production – natural-sounding, human-like speech
- Multi-language available
- Stand-alone recording capacity – no PC required
- Stylish and universal design
- Quick and easy smart navigation controls including talking manu
- Fast forward/reverse controls
- 160 x 128 , 4096 Color STN LCD
- Plug-and-play USB connection for transferring files from PC using the supplied PC software
- USB2.0 compatible
- Firmware upgradeable
- Built-in speaker
- Built-in lithium polymer rechargeable battery

1.Voiceye Player layout

1-2. Components in the package

Voiceye Player

Voiceye Scanner

Earphone

AC Adapter

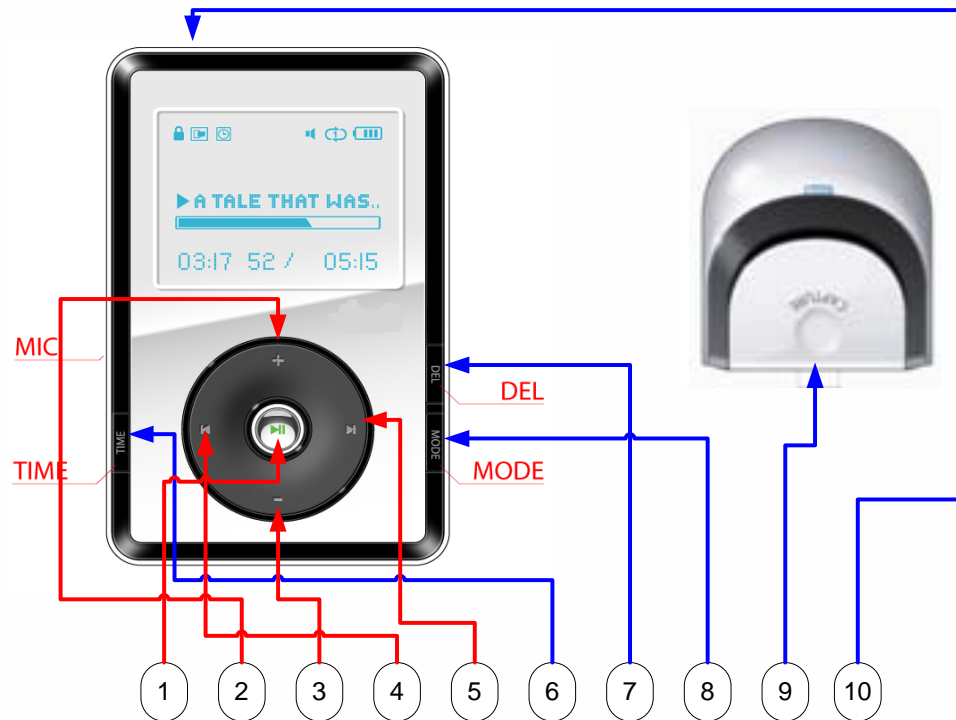
Install CD

User's manual

String

1.Voiceye Player layout

1-3. Key Functions



No.	Button Name	Description
①	Play	Power On / Off , Play , Pause, Enter
②	Up	Select Up, Volume Up
③	Down	Select Down, Volume Down
④	Left	Rewind, Folder Up, Left Channel Scan
⑤	Right	Fast Forward, Folder Down, Right channel Scan,
⑥	Time / Save	Talking Clock, Save
⑦	Del / Stop	Delete, Stop, Radio Record
⑧	Mode	Mode Change, Radio Channel Save
⑨	Capture	Quick Mode Change
⑩	Reset	Reset

1.Voiceye Player layout

1-4. Player Mode

1) Set up Mode

- Default setting for player
- A. Menu : TTS on / off
- B. Booting option : BGM / TTS / Beep
- C. Battery remainder : TTS / Beep
- D. Setting for TTS pitch
- E. LCD display : on / off
- F. Option for file sorting : Time / File name
- G. Option for bookmark play : Random / Sequence

2) Play Mode

- Select / play text file which has been saved in the player

3) VOICEYE Mode

- Auto capture / play / save the VOICEYE symbol

4) FM Mode

- FM tuner / Automatic channel scan / 6 channels saved
- MP3 record

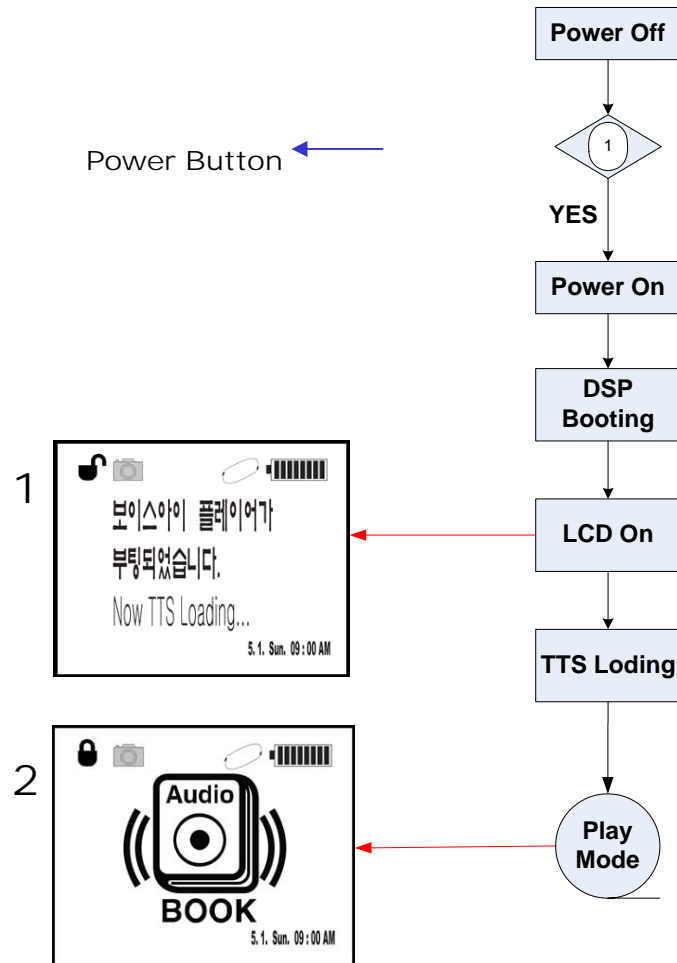
5) Voice record Mode

- Quick recoding by one-click

6) MP3 Mode

Will be available later

2.Boot System



Key

Button Name	Function	How to operate
Play	Power On	One Click
Play	Power Off	Press for 3 seconds

LCD

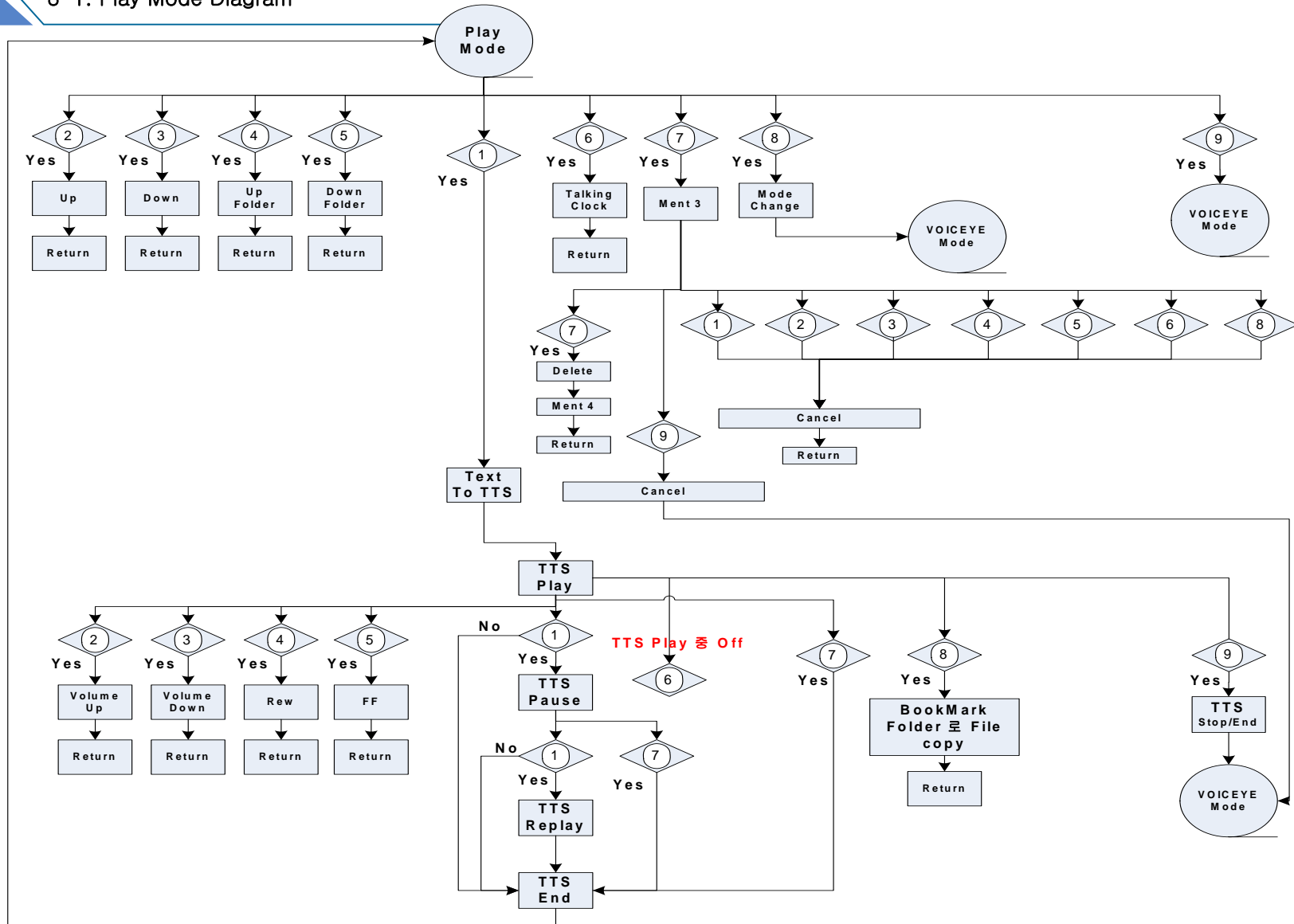
Sequen	Class.	Description
# 1	Booting	A. When the VOICEYE Player is booted, the battery remainder is displayed and spoken after measuring. B. Needed to review images displayed on the screen at this stage. On the lower part, texts are scrolled.
# 2	Play Mode	Moved to search screen after displaying the logo of Play Mode

SOUND

구분	Class.	Description
1	Voice	“ Start Play Mode. The remaining capacity of
	BGM	
	Beep	

3. PLAY Mode

3-1. Play Mode Diagram



3. PLAY Mode

3-2. Play Mode Key Function

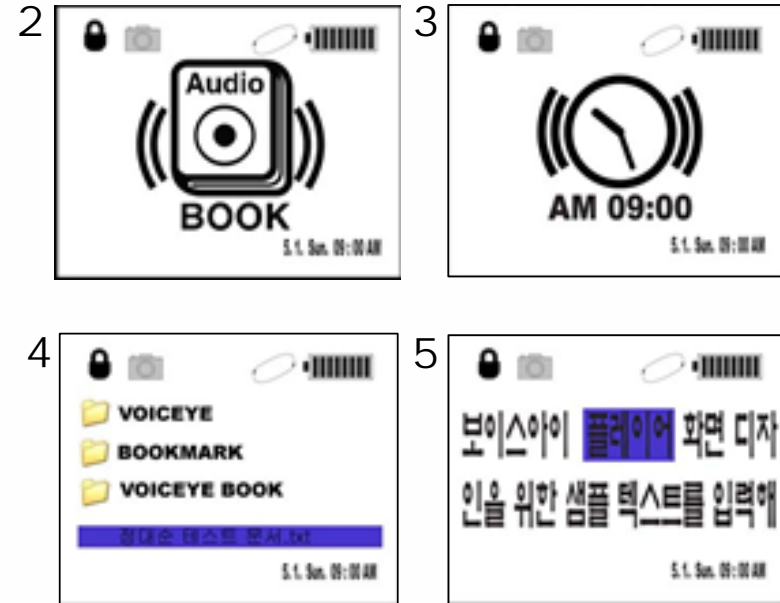
Mode	Class.	Function Key	Function	Description
Play Mode	Search Function	Play	Enter	Select the desired File
		Up	Select Up	Move focus up
		Down	Select Down	Move focus down
		Left	Up Folder	Move to the higher folder
		Right	Down Folder	Move to the lower folder
		Time / Save	Talking Clock	Display the current time and read it aloud
		Del / Stop	Delete Yes/No , Delete	Delete the desired file / delete after voice output for confirmation
		Mode	Mode Change	Change mode
		Capture	Quick Voiceeye Mode Change	Change to VOICEYE Mode
		Reset	Reset	Reset
	TTS Play	Play	Pause / Replay / Pause	Toggle Play and Pause
		Up	Volume Up	Press briefly to increase volume by 1 volume unit.
		Down	Volume Down	Press briefly to decrease volume by 1 volume unit.
		Left	Rewind	Back to the location of past 5 seconds
		Right	Fast Forward	Forward to the location of coming 5 seconds
		Time / Save	None	Does not work while playing TTS
		Del / Stop	Stop	Move to the search screen when pressing while playing TTS
		Mode	Book Mark	The played file is set into book mark folder when pressing for a second.
		Capture	Quick change to Voiceeye mode	Change to VOICEYE Mode
		Reset	Reset	Reset

3. PLAY Mode

3-3. Play Mode Function

SOUND

Sequence	Case	Class.	Description
2	Time Button Click	Voice output	" Nine O'clock a.m./p.m. "
		BGM	None
		Beep	None
3	Play Mode Search screen	Voice output	Voice output for the File/Folder Name selected
		BGM	None
		Beep	None
4	When pressing the delete key on the search screen	Voice output	" If you are sure to delete, press delete key."
		BGM	None
		Beep	None
5	When pressing the delete key again after delete key	Voice output	" Deleted "
		BGM	None
		Beep	None
6	When pressing any key after delete key	Voice output	" Canceled "
		BGM	None
		Beep	None
7	At the last stage after pressing 2,3,4,5, key on the search screen	Voice output	None
		BGM	None
		Beep	None

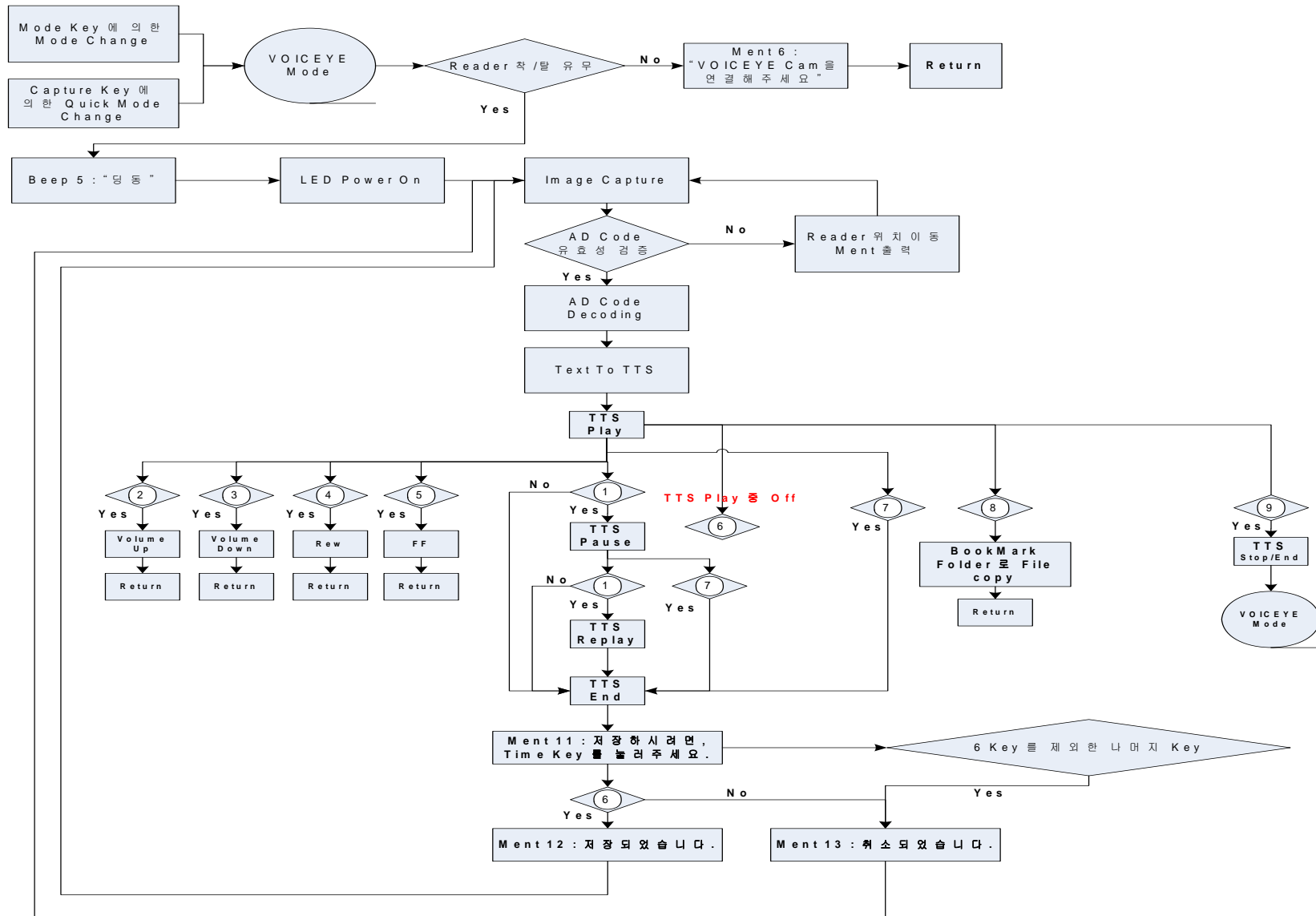


LCD

Sequence	Class.	Description
# 2	Play Mode	Display for 2 seconds after entering play mode
# 3	Talking Clock	Press the time button to display the current time.
# 4	Navigation	Search screen
# 5	TTS Play	Display texts which are spoken by TTS

4. VOICEYE Mode

4-1. VOICEYE Mode Diagram



4. VOICEYE Mode

4-2. VOICEYE Mode Key Function

Mode	Class.	Function Key	Function	Description
VOICEYE Mode	After capture operation / While playing TTS	Play	Pause / Replay / Pause	Toggle Play and Pause
		Up	Volume Up	Press briefly to increase volume by 1 volume unit.
		Down	Volume Down	Press briefly to decrease volume by 1 volume unit.
		Left	Rewind	Back to the location of past 5 seconds
		Right	Fast Forward	Forward to the location of coming 5 seconds
		Time / Save	None	Does not work while playing TTS
		Del / Stop	Stop	Move to the search screen when pressing while playing TTS
		Mode	Book Mark	The played file is set into book mark folder when pressing for a second.
		Capture	Quick change to Voiceye mode	Change to VOICEYE mode
		Reset	Reset	Reset
VOICEYE Mode	After finish of TTS play	Time / Save	Save	The file saved in buffer is saved according to the value of header information when pressing the time key.
		Others	Cancel	“Canceled” spoken

Differences from Play Mode

In Play mode, the file which has been saved already is set as bookmark. Thus, the only address where the file has been saved already is saved.

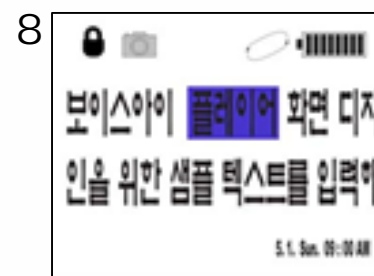
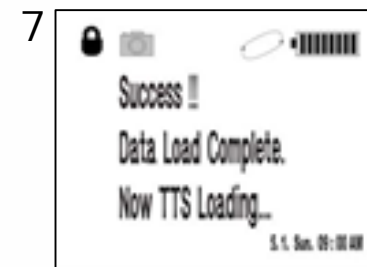
In VOICEYE Mode, the text file, which has been saved in random of memory and is output, is set as bookmark. Thus, the all of the text is moved and saved into bookmark folder.

4. VOICEYE Mode

4-3. VOICEYE Mode Function

SOUND

Sequence	Case	Class.	Description
8	When the scanner is not connected in VOICEYE Mode	Voice-output	" Connect the Voiceeye Scanner "
		BGM	None
		Beep	None
9	When the wrong capture of symbol after checking the availability of AD code	Voice-output	"Move to left side" "Move to right side." "Move to upside." "Move to underside"
		BGM	None
		Beep	None
10	After finishing TTS operation / when pressing the delete (stop) key while playing TTS	Voice-output	" Press the time key to save "
		BGM	None
		Beep	None
11	When pressing the time key / when pressing the time key after delete Key	Voice-output	" Successfully saved "
		BGM	None
		Beep	None
12	When pressing any key after delete key	Voice-output	" Cancelled "
		BGM	None
		Beep	None

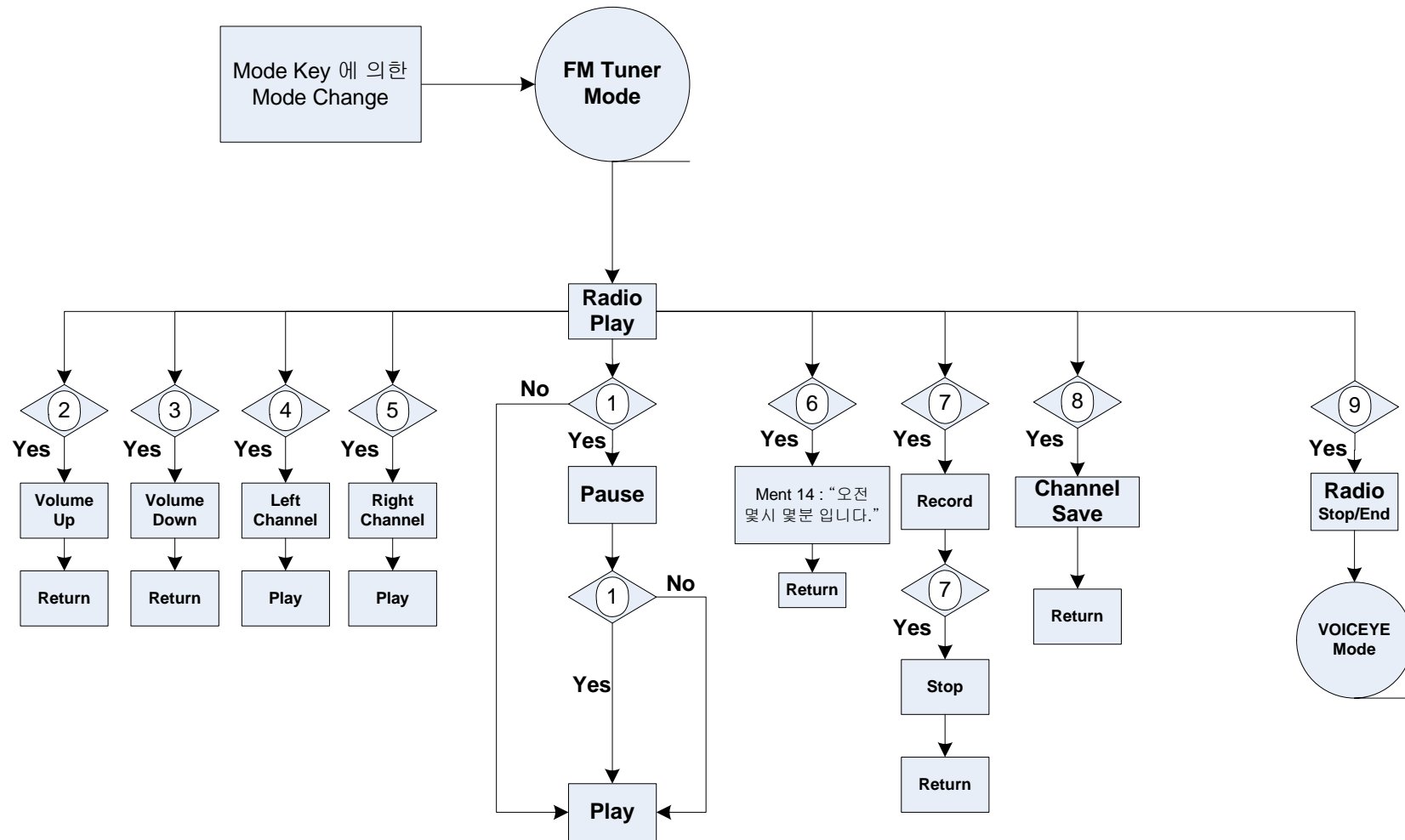


LCD

Sequence	Class.	Description
# 6	VOICEYE Mode	Display for 2 seconds after entering Voiceeye mode
# 7	Decode Success	After symbol capture or successful decoding
# 8	TTS Play	Display texts which are spoken by TTS

5. FM Mode

5-1. FM Mode Diagram



5. FM Mode

5-2. FM Mode Key Function

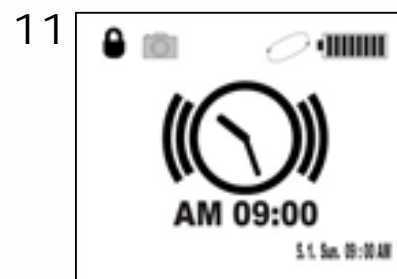
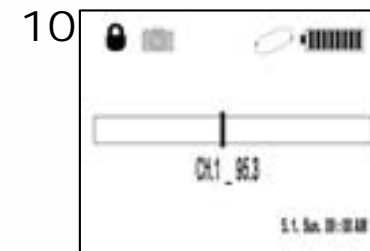
Mode	Class.	Function Key	Function	Description
FM Mode	While listening to FM radio	Play	Pause / Replay / Pause	Toggle Play and Pause
		Up	Volume Up	Press briefly to increase volume by 1 volume unit.
		Down	Volume Down	Press briefly to decrease volume by 1 volume unit.
		Left	Left Channel Scan	Left Channel Scan (When you briefly press the button while listening to FM radio, the frequency moves by 0.1 KHz. / When you press the button for a second, the Voiceeye automatically searches for the nearest station with good reception.)
		Right	Right Channel Scan	Right Channel Scan (When you briefly press the button while listening to FM radio, the frequency moves by 0.1 KHz. / When you press the button for a second, the Voiceeye automatically searches for the nearest station with good reception.)
		Time	Talking Clock	Voice output for current time "Nine O'clock a.m."
		Del	Radio Recording	To record FM broadcasts while listening to FM radio station, press the delete button for a second.
		Mode	Save channel	Press for a second to add the current radio station to presets.
		Capture	Quick change to Voiceeye mode	Stop listening to radio / Change to VOICEYE mode
		Reset	Reset	Reset
VOICEYE Mode	While recording operation	Del	Stop recording	When you press the delete key again while recoding, the Voiceeye player stops recording.
		Others	None	The button is not responded.

5. FM Mode

5-3. FM Mode Function

SOUND

Sequence	Case	Class.	Description
13	After entering FM Mode	Voice output	“ 95.3 MHz for channel number 1 “
		BGM	None
		Beep	None
14	When informing on the start of radio recording by the delete key	Voice output	None
		BGM	None
		Beep	None
15	When stop it by pressing the delete key while recording FM broadcasts	Voice output	None
		BGM	None
		Beep	None
16	When informing on saving the radio station by pressing the mode key	Voice output	None
		BGM	None
		Beep	None



LCD

Sequence	Class.	Description
# 9	FM Mode	Display for 2 seconds after entering FM mode
# 10	Channel Bar	Display the frequency which is currently scanned
# 11	Talking Clock	Display the current time



1

Specifications

※ VOICEYE Player

Audio	Channel	Stereo (right/left)
	Frequency Range	20Hz ~ 20KHz
	Earphone Output	(L)15mW + (L)15mW, 16Ω
	Speaker Output	(L)250mW + (L)250mW, 8Ω
FM Tuner	FM Frequency Range	87.5MHz ~ 108MHz
File Support	File Type	Text
Power Supply	Power Adapter	USB or Adapter (5V/0.5A)
	Charge Time	2 hours
	Battery Type	Lithium ion Polymer
General	Dimension	102 x 65 x 23 mm
	Weight	125g (incl. Battery)
	LCD Size	1.89"
	LCD Display	160 x 128 STN/4096 color
	Operating Temperature	0 ~ 40°C
	Memory	512MB internal memory(TTS DB 200MB)
	USB	USB 2.0
	Max. Play Time	3 hours (under the condition of play mode)
	Voice Recording	Sampling Frequency 16kHz , 16 bit mono



※ **VOICEYE Scanner**

Dimension	43 x 48 x 67 mm
Weight	80g
Image Sensor	1/2 inch CMOS Color SXGA
Color	24 bit RGB Color
Pixel Array Size	1280 x 1024
Exposure	Auto & Manual Control
S/N Ratio	54 dB
Max. Image Transfer Rate	15 FPS (Frame Per Sec)
Interface	24 pin Port
Length of USB Cable	1.2 m