

Operational Description

- Designed for the people who are blind, visually impaired, partially sighted and illiterate to access to information in all printed matters
- Revolutionary and versatile substitute for all kinds of visual and reading aids, such as Braille, screen readers, magnifiers, and audio books
- Completely portable reading device for decoding and reciting text and audible data encoded in Voiceye symbol

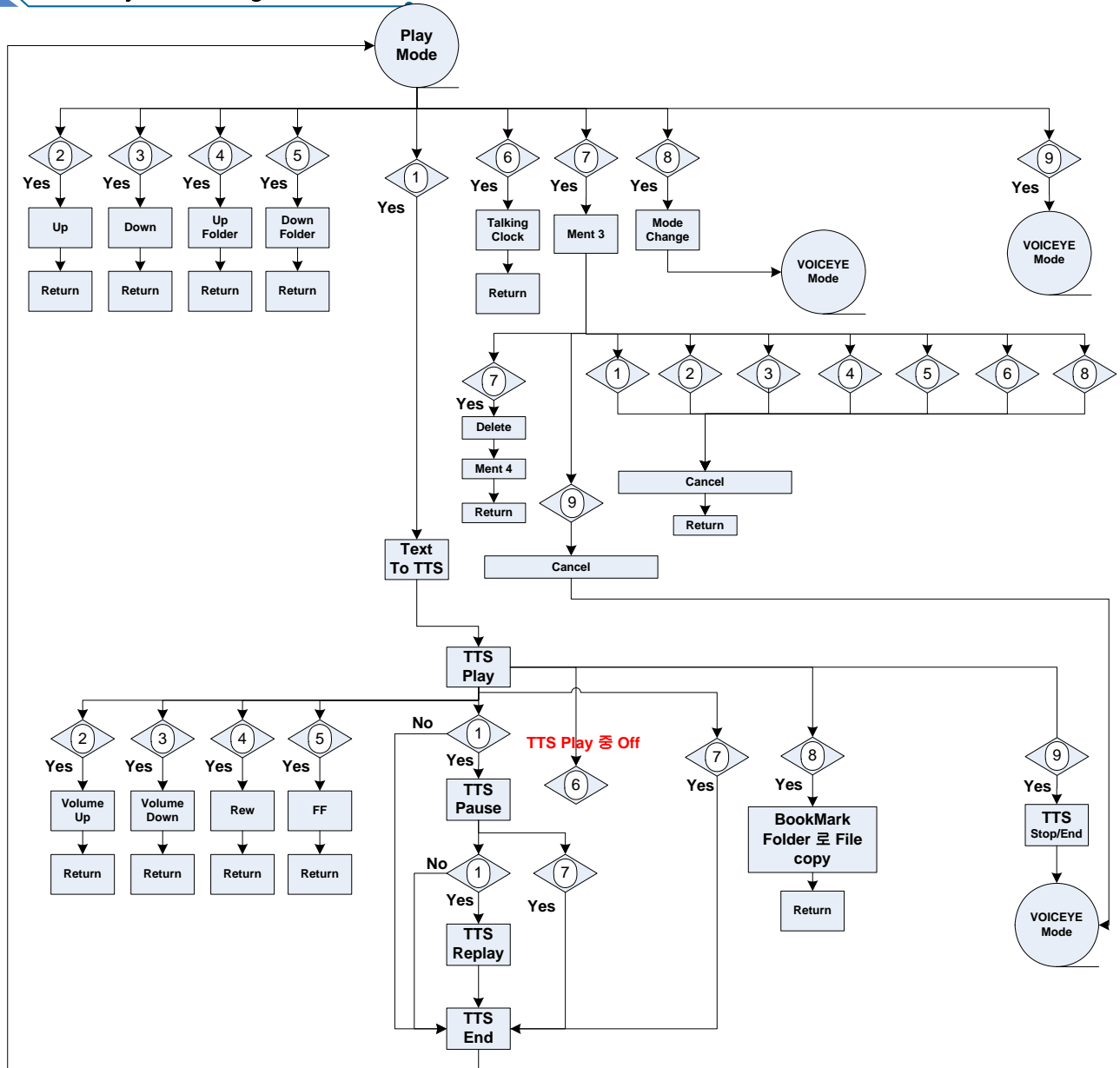
Take advantage of Voiceye mate's many capabilities

- Advanced real-time Text to Speech reader
- Audio book
- Built-in voice recorder
- FM radio
- Talking clock
- Name card and address book

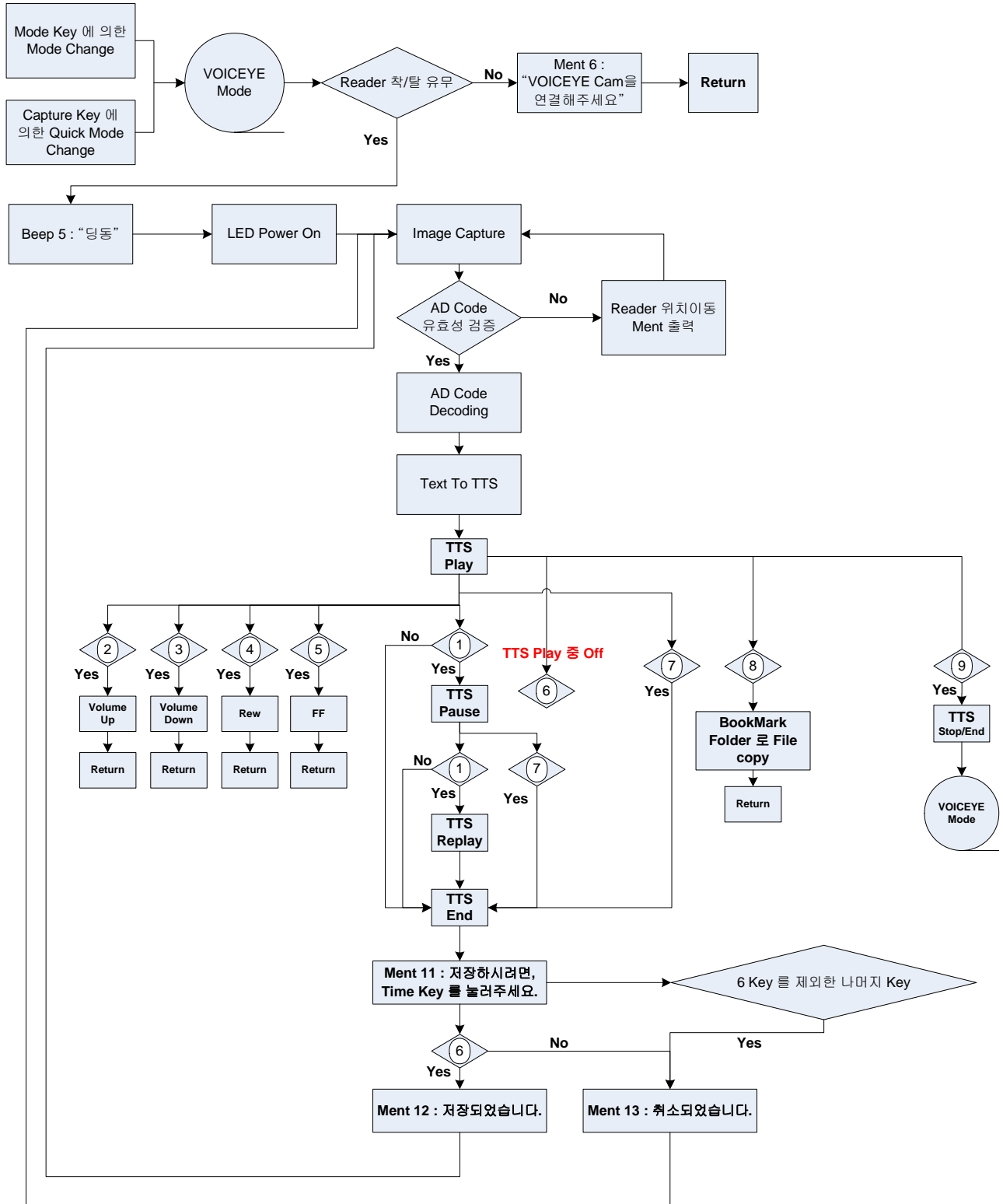
VOICEYE Mate enhances your reading ability by giving you the following features and advantages:

- Completely portable device for decoding and reciting text
- Economical tool for listening to text and music
- High quality voice production – natural-sounding, human-like speech
- Multi-language available
- Stand-alone recording capacity – no PC required
- Stylish and universal design
- Quick and easy smart navigation controls including talking manu
- Fast forward/reverse controls
- 160 x 128 , 4096 Color STN LCD
- Plug-and-play USB connection for transferring files from PC using the supplied PC software
- USB2.0 compatible
- Firmware upgradeable
- Built-in speaker
- Built-in lithium polymer rechargeable battery

3-1. Play Mode Diagram



4-1. VOICEYE Mode Diagram



1 Specifications

※ VOICEYE Player

Audio	Channel	Stereo (right/left)
	Frequency Range	20Hz ~ 20KHz
	Earphone Output	(L)15mW + (L)15mW, 16Ω
	Speaker Output	(L)250mW + (L)250mW, 8Ω
FM Tuner	FM Frequency Range	87.5MHz ~ 108MHz
File Support	File Type	Text
Power Supply	Power Adapter	USB or Adapter (5V/0.5A)
	Charge Time	2 hours
	Battery Type	Lithium ion Polymer
General	Dimension	102 x 65 x 23 mm
	Weight	125g (incl. Battery)
	LCD Size	1.89"
	LCD Display	160 x 128 STN/4096 color
	Operating Temperature	0 ~ 40℃
	Memory	512MB internal memory(TTS DB 200MB)
	USB	USB 2.0
	Max. Play Time	3 hours (under the condition of play mode)
	Voice Recording	Sampling Frequency 16kHz , 16 bit mono

※ VOICEYE Scanner

Dimension	43 x 48 x 67 mm
Weight	80g
Image Sensor	1/2 inch CMOS Color SXGA
Color	24 bit RGB Color
Pixel Array Size	1280 x 1024
Exposure	Auto & Manual Control
S/N Ratio	54 dB
Max. Image Transfer Rate	15 FPS (Frame Per Sec)
Interface	24 pin Port
Length of USB Cable	1.2 m