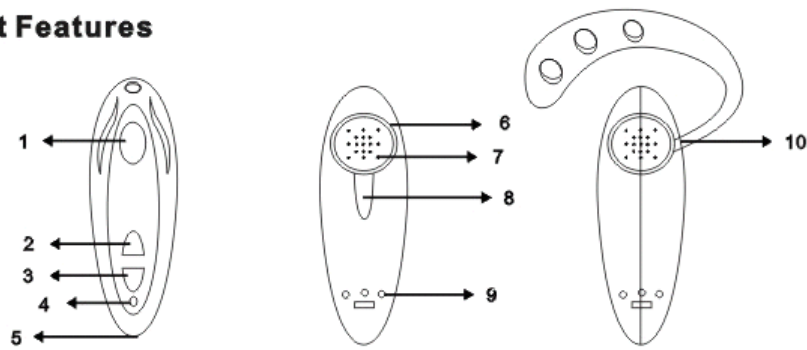


Headset Features



1. Talk Button: Switches the headset on/off, answers/ends a call, pairs the headset with a device, and is used for voice dialing.
2. Volume Up Button: Increases the speaker volume.
3. Volume Down Button: Decreases the speaker volume.
4. LED Indicator: Displays the status of the headset.
5. Microphone: Picks up external audio.
6. Earpiece: Holds the headset in the ear.
7. Speaker: Plays incoming audio.
8. Earpiece Arm: Provides superior stability and durability.
9. Charging Port: Charges the battery.
10. Earhook: Provides superior stability and durability.

6

Charging the Headset

The headset has a rechargeable battery. Before using the headset for the first time, you have to charge the headset battery for approximate 2 hours to get a full charge. A fully charged battery provides up to 7 hours of talk time and over 1 week of standby time.

When the battery is low, the LED indicator flashes red. The low battery warning indication will begin three minutes of talk time before the headset runs out of power.

You can recharge the headset at any time without waiting for the battery to be completely discharged. To keep the battery in good condition, please always recharge the headset within a month once the headset is fully discharged.

Before charging, make sure that the headset is at room temperature. The battery will not charge in very cold and very hot conditions.

NOTE: The headset battery is not replaceable.

To charge the headset:

1. Connect the AC adapter to the desktop charger, then plug into an electrical outlet.

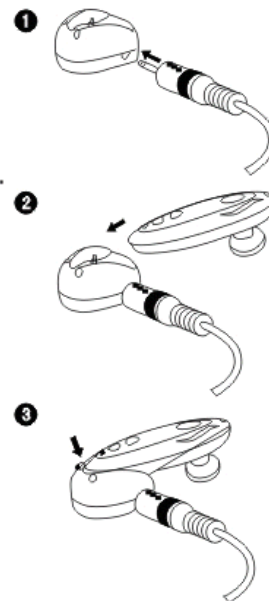
2. Place the headset in the desktop charger.

3. During charging, the red indicator light on the desktop charger illuminates.

4. When the battery is fully charged, the indicator light on the Charger Turns blue.

5. You can now remove the headset from the desktop charger, and disconnect the desktop charger from the AC adapter.

During charging, if an incoming call arrives while the headset is switched on, you can answer the call simply by removing the headset from the desktop charger.



8

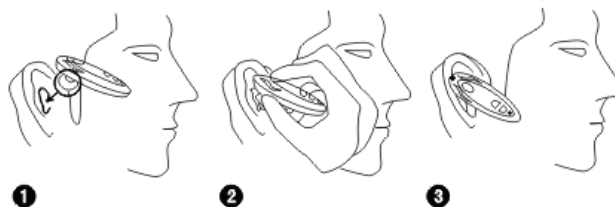
Wearing the Headset

The C4 Bluetooth Headset can be worn either on the right or left ear. The earpiece is adjustable, and the 90-degree, rotatable design ensures a snug yet comfortable fit in your ear. To put on the headset, please follow the instructions as below:

1. Directly put the earpiece into your outer ear canal.

2. Adjust the headset to fit your ear.

3. The microphone should be positioned towards your mouth.



The ear cushion supplied with the C4 Bluetooth Headset provides additional comfort and Better fitting. To attach the ear cushion.

1. Hold the headset firmly.

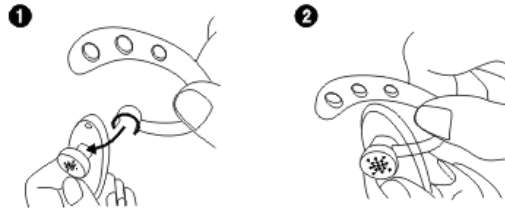
2. Cover the earpiece with the ear cushion.

3. The ear cushion is attached to the ready-to-wear headset.

9

Using the earhook

1. Connect the earhook to your headset
2. Loop the earhook over your ear
3. Press the headset to your ear
4. Point the microphone to your mouth



Changing for wear on the left ear.

The small hook turns right and do the same steps.

Using the earpiece arm

The earpiece arm have two sizes in the package. You can select better fitting one and connect it to the headset. Directly put the earpiece arm into your outer ear canal. Then try to find an appropriate sticking place of your outer ear canal for it. It helps fix the headset while walking or moving.



10

Switching the Headset On/Off

To switch the headset on

1. Press the Talk button for 5 seconds
2. The headset switches on and enters standby mode. The LED indicator continuously flashes blue every 3 seconds.



To switch the headset off

1. Press the Talk button for about 1 second until you hear a high tone followed by a low tone. The LED Indicator flashes red four times.
2. The headset switches off and the LED indicator no longer blinks.

Pairing the Headset

Before using the headset, you must first pair it with a Bluetooth wireless technology enabled device, such as a Bluetooth mobile phone.

Pairing is necessary for two Bluetooth devices to connect each other wirelessly. After creating a paired link, you do not need to repeat the pairing process and the headset automatically links to the mobile phone when both devices are switched on. Pairing must be performed every time you want to use the

headset with a different Bluetooth mobile phone or other Bluetooth wireless technology enabled devices. The headset can be paired simultaneously with up to 8 mobile phones.

To initiate pairing between the headset and a Bluetooth mobile phone in close proximity:

1. Please turn off the headset.
2. Make certain the mobile phone is switched on .
3. Press the Talk button to switch on the headset, and keep the Talk button pressed for 7 seconds until the LED indicator alternates between blue and red. The headset is now ready for pairing with the mobile Phone.
4. Perform a device discovery from the mobile phone. (For details on device discovery, please consult your phone's user's guide.)
5. Once the mobile phone discovers the headset, the content Bluetooth C4 appears on the phone's screen.
6. Follow the phone instructions to accept pairing. When prompted to enter the passkey, enter the number : 0000.
7. If time runs out after 60 seconds and the pairing fails, you will have to repeat the steps above. You can view the status from the phone's screen.
8. On completing pairing, the phone's screen will notify you that the pairing was successful. The LED indicator continuously flashes blue, and the headset goes into standby mode.
9. You can now make and answer calls through the headset.

12

Using the Headset

Before using the headset, make sure that (1) the headset is switched on and connected to a paired Bluetooth mobile phone; (2) the headset is within 10 meters of the phone; and (3) the phone's Bluetooth feature is on (see your phone's user's guide).

NOTE: The headset supports both Headset and Hands-Free profiles. Some mobile phones don't Support all functions listed below. Please consult your phone's user's guide.

Accepting a Call

When an incoming call comes, the headset rings and the LED indicator flashes blue at a 3-second interval. To receive the call from the headset, press the Talk button once. You can also answer the call by using your phone in the normal way. Please note that if the mobile phone rings first, wait until you hear a ring tone from the headset, and then press the Talk button to answer the call.

Ending a Call

To end a call, press the Talk button once on the headset or press the phone's END key. The headset returns to standby mode.

Rejecting a call

When a call comes and you do not want to answer it, you can press the Talk button for 2 seconds, and release it after an audio tone.

Making a Call

You can make a call through:

Voice activation

To use voice activation, the mobile phone must support voice dialing. For details on voice dialing, please see your phone's user's guide.

1. Press the Talk button once on your headset.
2. After a short tone sounds, speak the name of the person you wish to connect (if he or she has a voice tag in your phone).
3. The phone automatically dials the number. You can see the details of the call from the phone's screen.

Dialing a phone number from your mobile phone

1. Dial the phone number from the mobile phone's keypad.
2. Press the key to send the call from your phone.
3. The call automatically transfers to the headset.

14

Last Number Redialing

To redial the last phone number, press the Volume Up button for 3 seconds, hear audio tone, then set free the button.

Volume Control

You can adjust the headset speaker volume during a call. An audio tone is played for each volume up and volume down step.

To increase the volume, press the Volume Up button repeatedly until you reach the desired level.

You will hear two audio tones while you press the button at the highest level. To decrease the volume, press the Volume Down button repeatedly until you reach the desired level.

Transferring a Call between Headset and Mobile Phone

To transfer a call between the headset and mobile, please simply press the Volume Up button around 3 seconds.

Mute/Un-mute

To mute the headset during a call, you need to press the Volume Down button for 3 seconds, and will hear a tone from the headset. After the step, the two continue tones will be heard every 20 seconds.

To un-Mute the headset, press the Volume Up button or the Volume Down button once.

Electricity Saving

Because the LED light will consume the energy of the battery, we provide a special power saving mode to turn off the LED by press any button once. To turn to normal mode, press the button again.

16

Headset LED Indicator

Status	Blue LED	Red LED	Interval	Remarks
Turning on	4 times			
Turning off		4 times		
Pairing mode	Flashes blue and red alternatively until the pairing is complete or time out.			
Standby mode	Once	Once	3 seconds	■ Flashes red when low battery
Incoming call	3 times		3 seconds	
Talk mode	3 times	3 times	3 seconds	■ Flashes red when low battery

Desktop Charger Indicator

Status	Red LED	Blue LED
Charging in process	On	
Charging complete		On

17

Audio Tones

Switching on	Quick series of 2 tones, low to high	Switching off	Quick series of 2 tones, high to low
Pairing mode	Into pairing mode after 1 tone	Incoming call	A ring tone at a 2-second interval
Mute	Two tones repeated every 20 seconds	Un-mute	Single tone
Low battery	5 rapid tones every 20 seconds in standby mode		

Particularly, for Nokia mobile phones

- All sounds generated from the mobile phone automatically transfer to the headset.
- When a call comes in, the headset uses the same ring tone as the mobile phone. If the mobile phone is set in vibration mode, you won't hear any ring tone from the headset.

Federal Communication Commission Interference Statement

This equipment has been tested and found to comply with the limits for a Class B digital device, pursuant to Part 15 of the FCC Rules. These limits are designed to provide reasonable protection against harmful interference in a residential installation. This equipment generates, uses and can radiate radio frequency energy and, if not installed and used in accordance with the instructions, may cause harmful interference to radio communications. However, there is no guarantee that interference will not occur in a particular installation. If this equipment does cause harmful interference to radio or television reception, which can be determined by turning the equipment off and on, the user is encouraged to try to correct the interference by one of the following measures:

- Reorient or relocate the receiving antenna.
- Increase the separation between the equipment and receiver.
- Connect the equipment into an outlet on a circuit different from that to which the receiver is connected.
- Consult the dealer or an experienced radio/TV technician for help.

FCC Caution: Any changes or modifications not expressly approved by the party responsible for compliance could void the user's authority to operate this equipment.

This device complies with Part 15 of the FCC Rules. Operation is subject to the following two conditions: (1) This device may not cause harmful interference, and (2) this device must accept any interference received, including interference that may cause undesired operation.