

tip

REF -20.0 dBm

AT 10 dB

MKR 3.8250 msec

.05 dB

PEAK

LOG

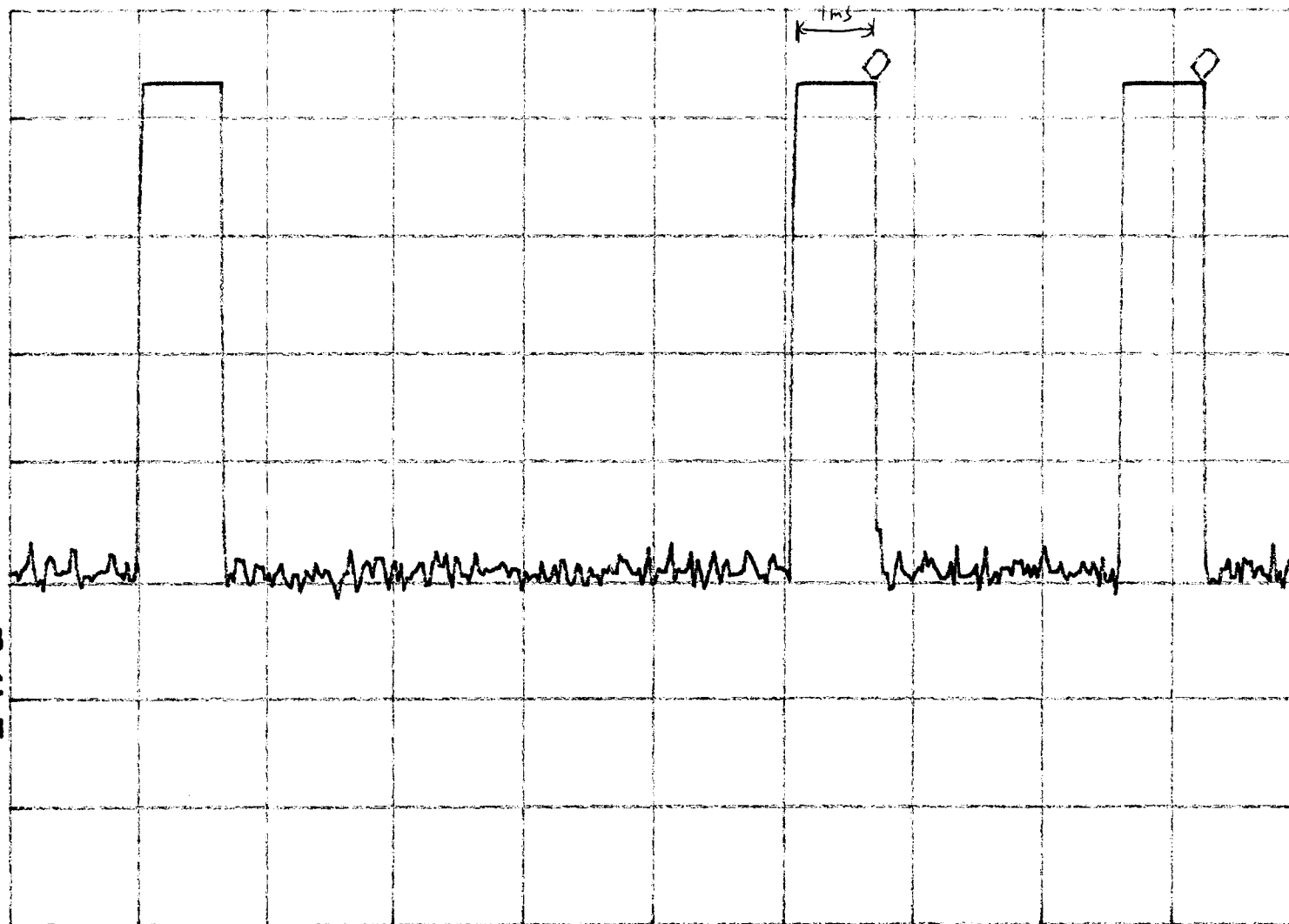
10

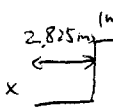
dB/

VA SB

SC FC

CORR



Worst Case: $26 \times$ 

Duty Cycle

$= (1 \times 26 + 0.55)/100$

$= 0.2655$

Average Factor = -11.5 dB

CENTER 433.896 MHz

SPAN 0 Hz

#RES BW 3.0 MHz

#VBW 3 MHz

#SWP 15.0 msec

h7

REF -20.0 dBm

AT 10 dB

PEAK

LOG

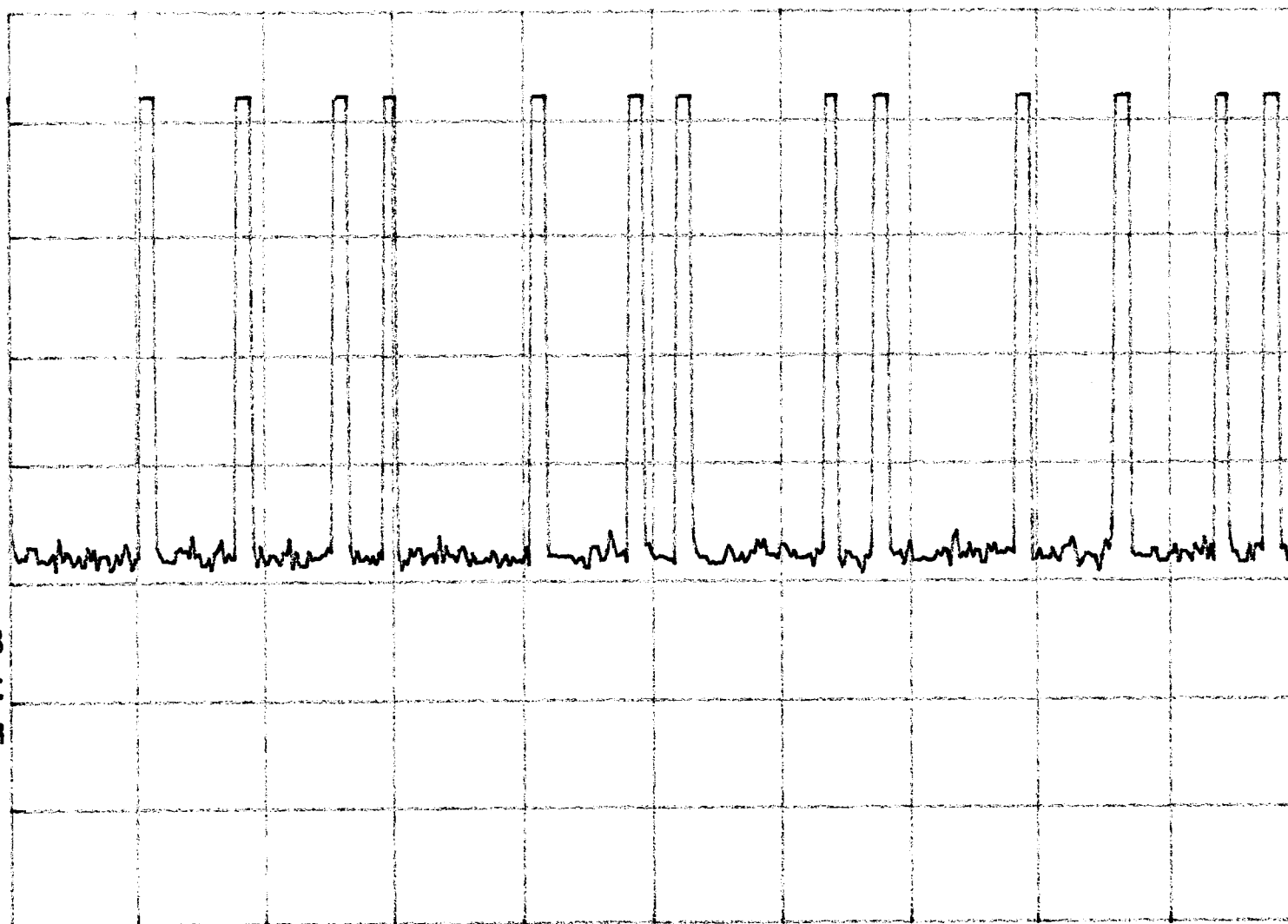
10

dB/

WA SB

SC VC

CORR



CENTER 433.896 MHz

SPAN 0 Hz

#RES BW 3.0 MHz

#VBW 3 MHz

#SWP 100 msec

1/2

MARK 612.50 msec

REF -20.0 dBm

AT 10 dB

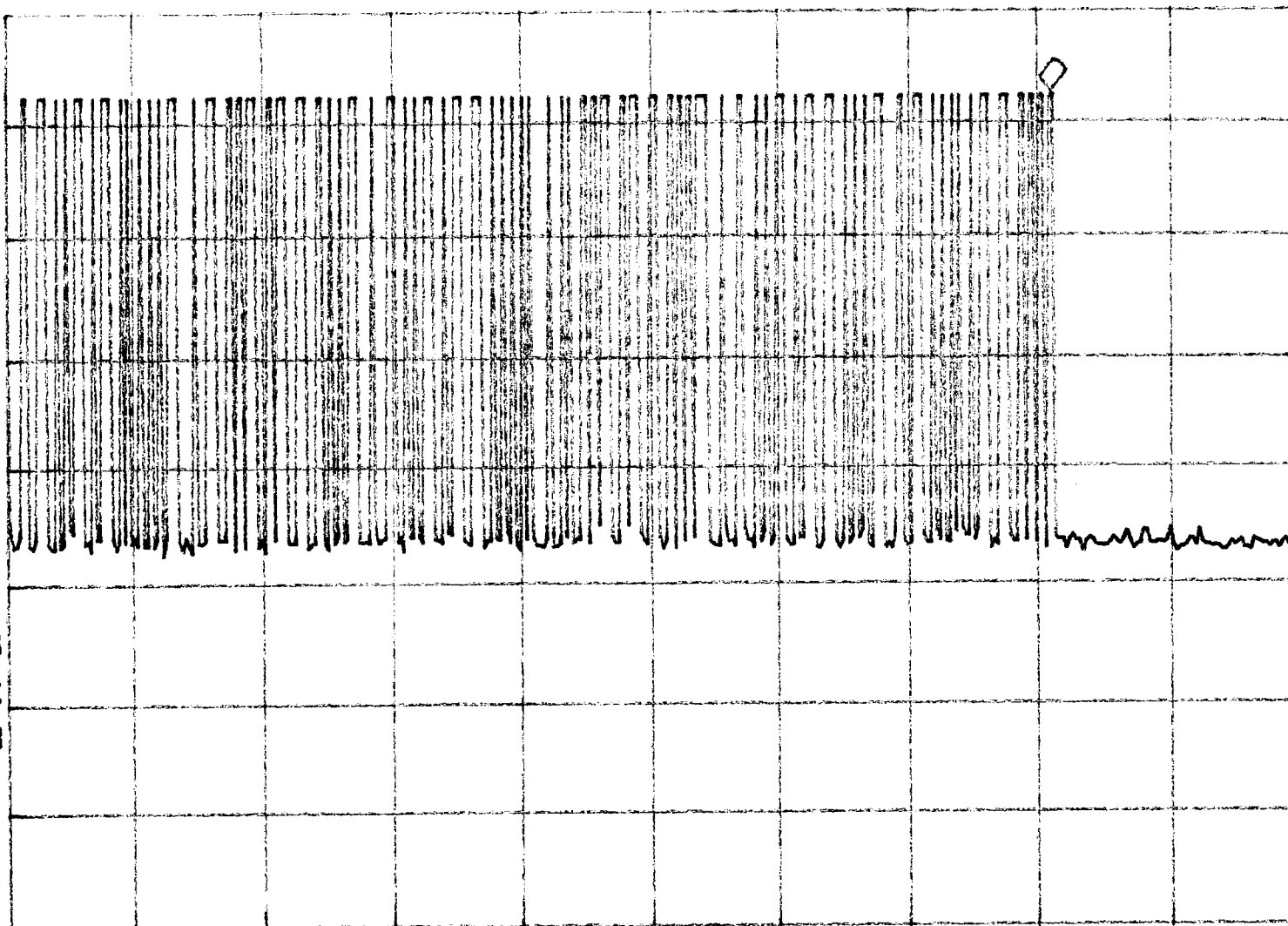
-27.50 dBm

PEAK

LOG

10

dB/



WA SB

SC VC

CORR

CENTER 433.896 MHz

SPAN 0 Hz

#RES BW 3.0 MHz

#VBW 3 MHz

#SWP 1.00 sec

hp

MKR 61.250 sec

REF -20.0 dBm

AT 10 dB

.07 dB

PEAK

LOG

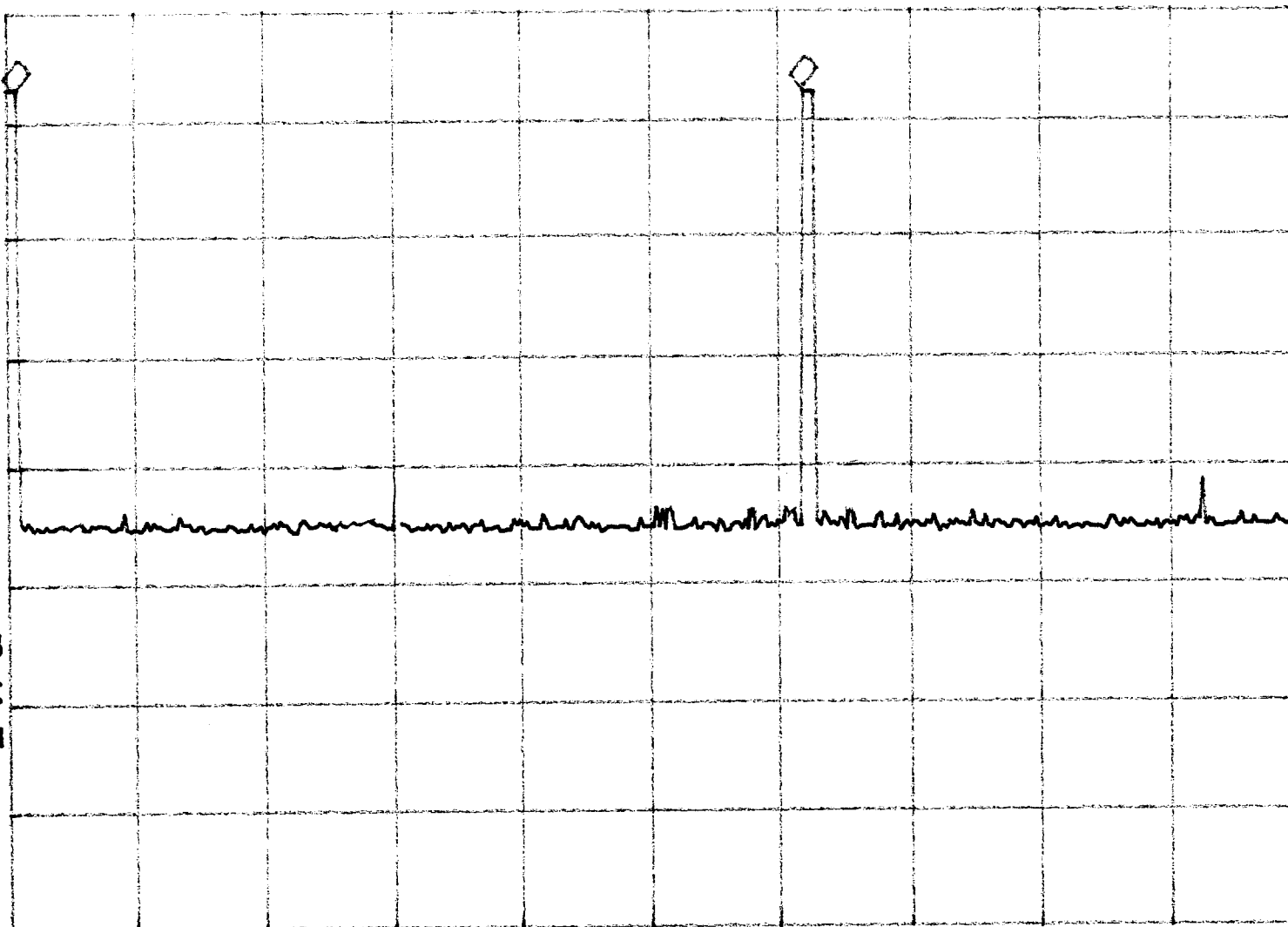
10

dB/

VA SB

SC VC

CORR



CENTER 433.896 MHz

SPAN 0 Hz

#RES BW 3.0 MHz

#VBW 3 MHz

#SWP 100 sec