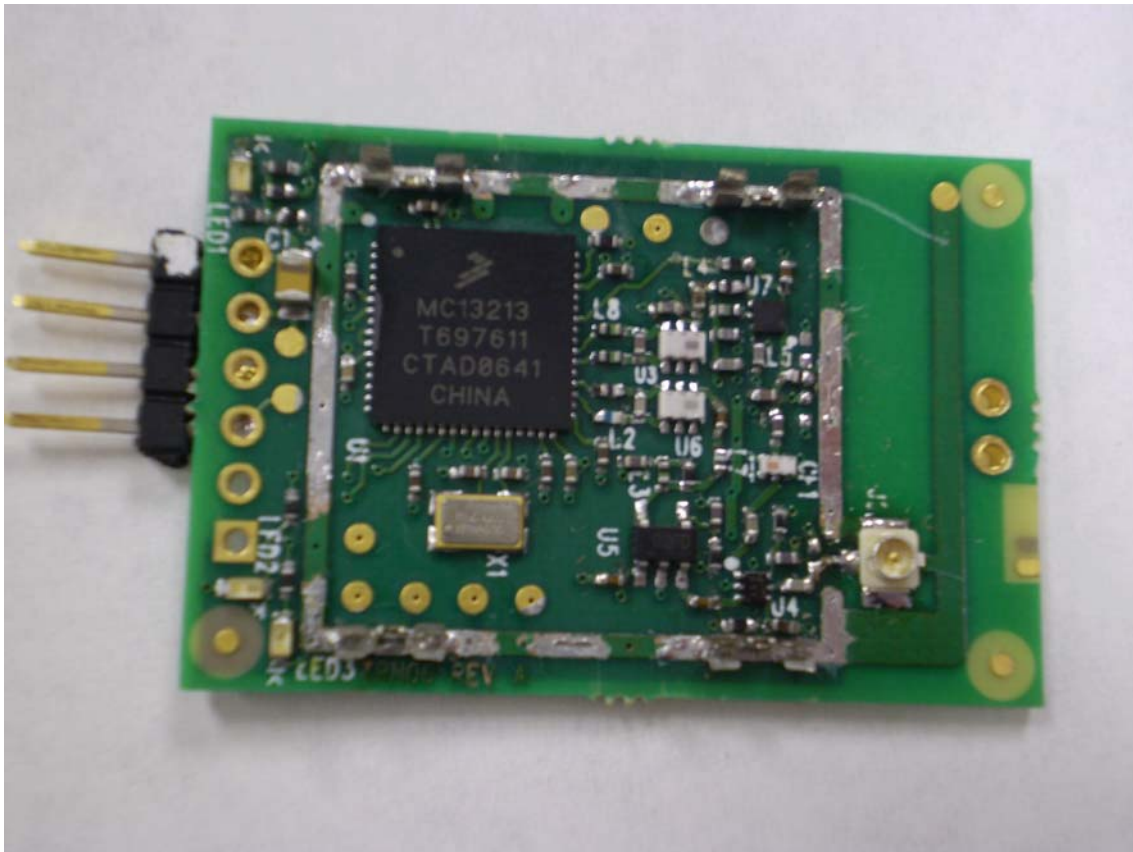


Trilliant Networks

22 dB Radio Module

FCC ID#: TMB-EM000033

**Photo One – Internal
RF Section, Shield Removed**

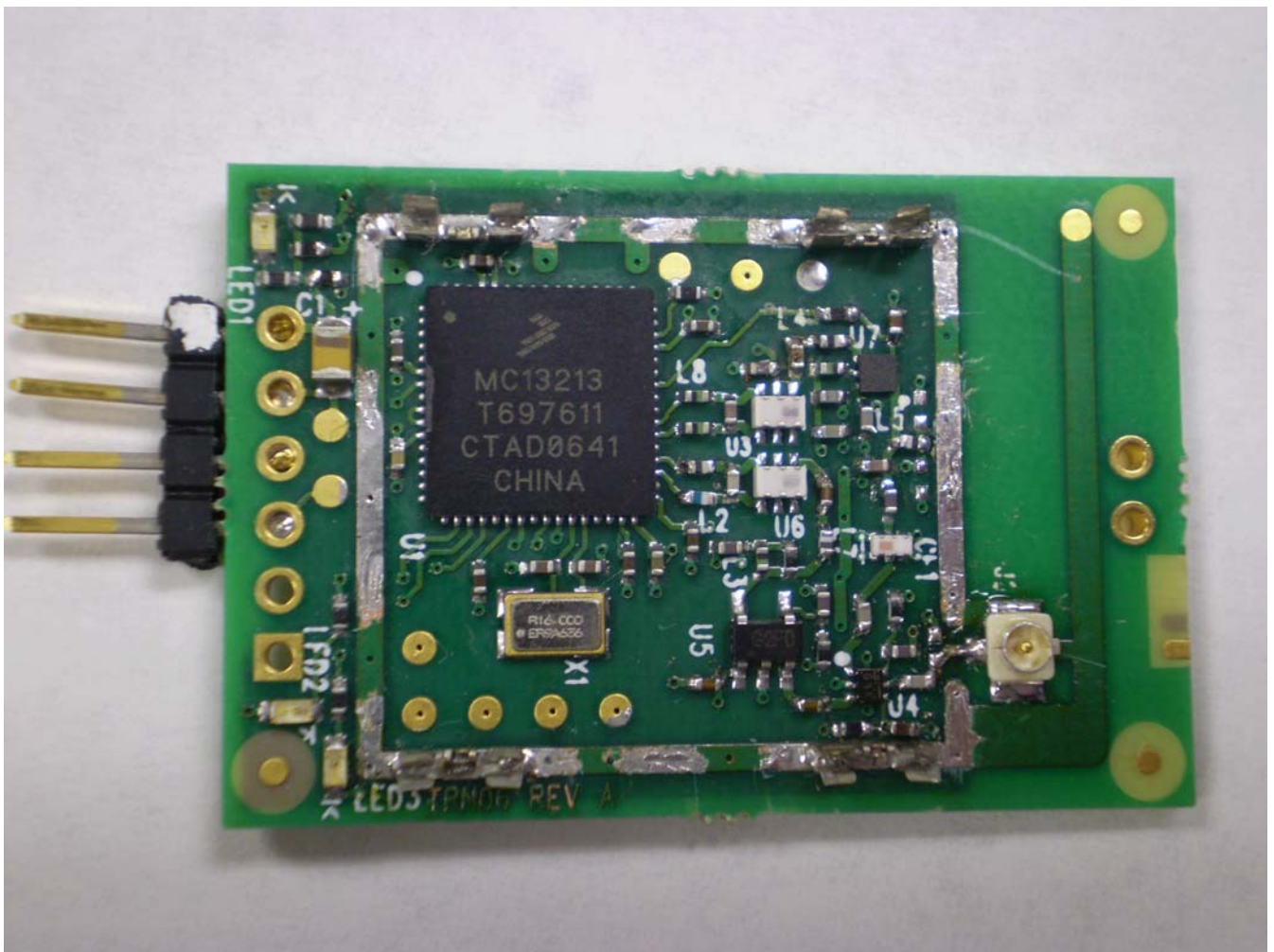


Trilliant Networks

22 dB Radio Module

FCC ID#: TMB-EM000033

Photo Two – Internal
Close-up of RF Section

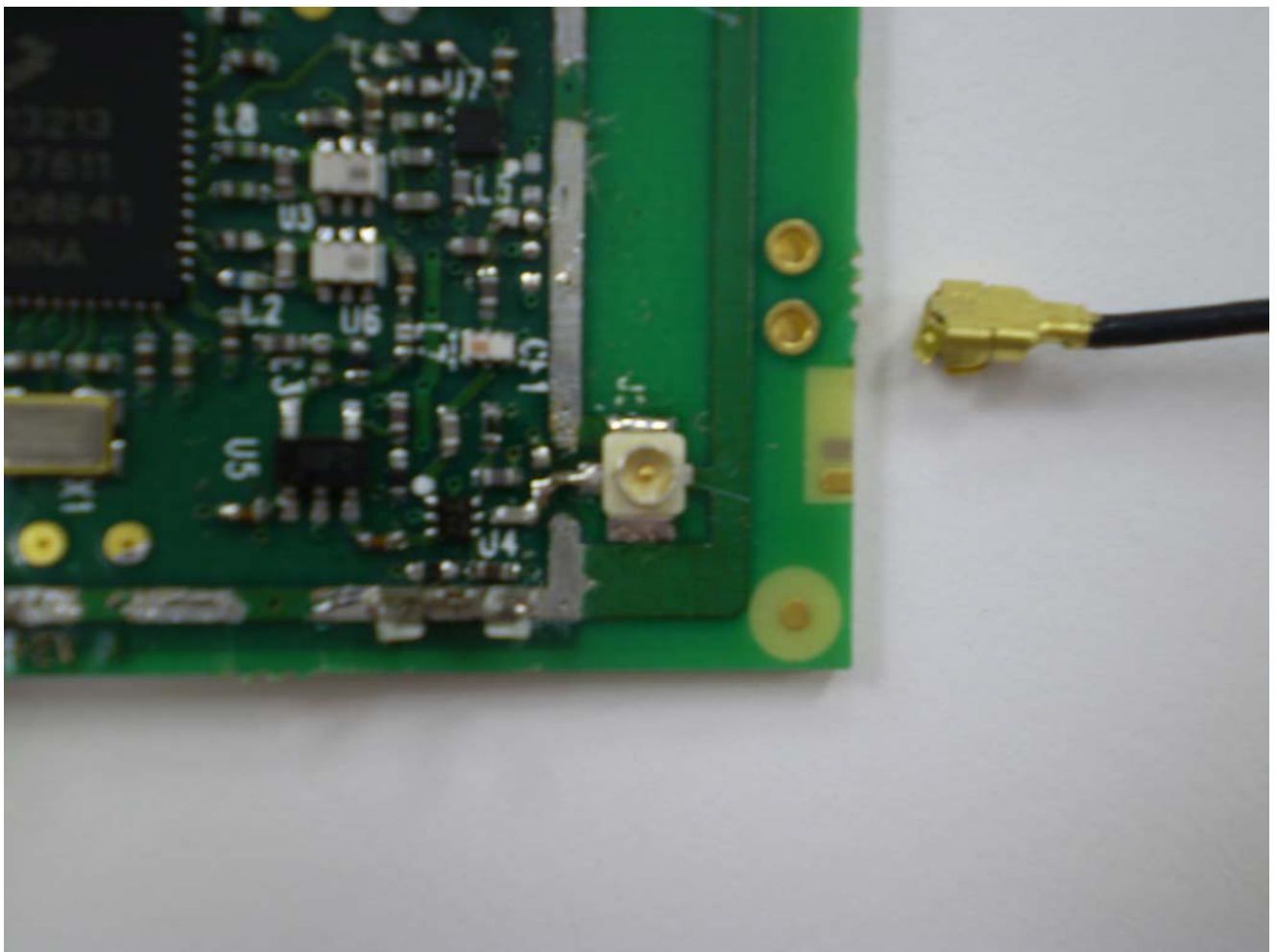


Trilliant Networks

22 dB Radio Module

FCC ID#: TMB-EM000033

**Photo Three – Internal
Close-up of External Antenna Connector**



Trilliant Networks

22 dB Radio Module

FCC ID#: TMB-EM000033

Photo Four – Internal Side View of Board

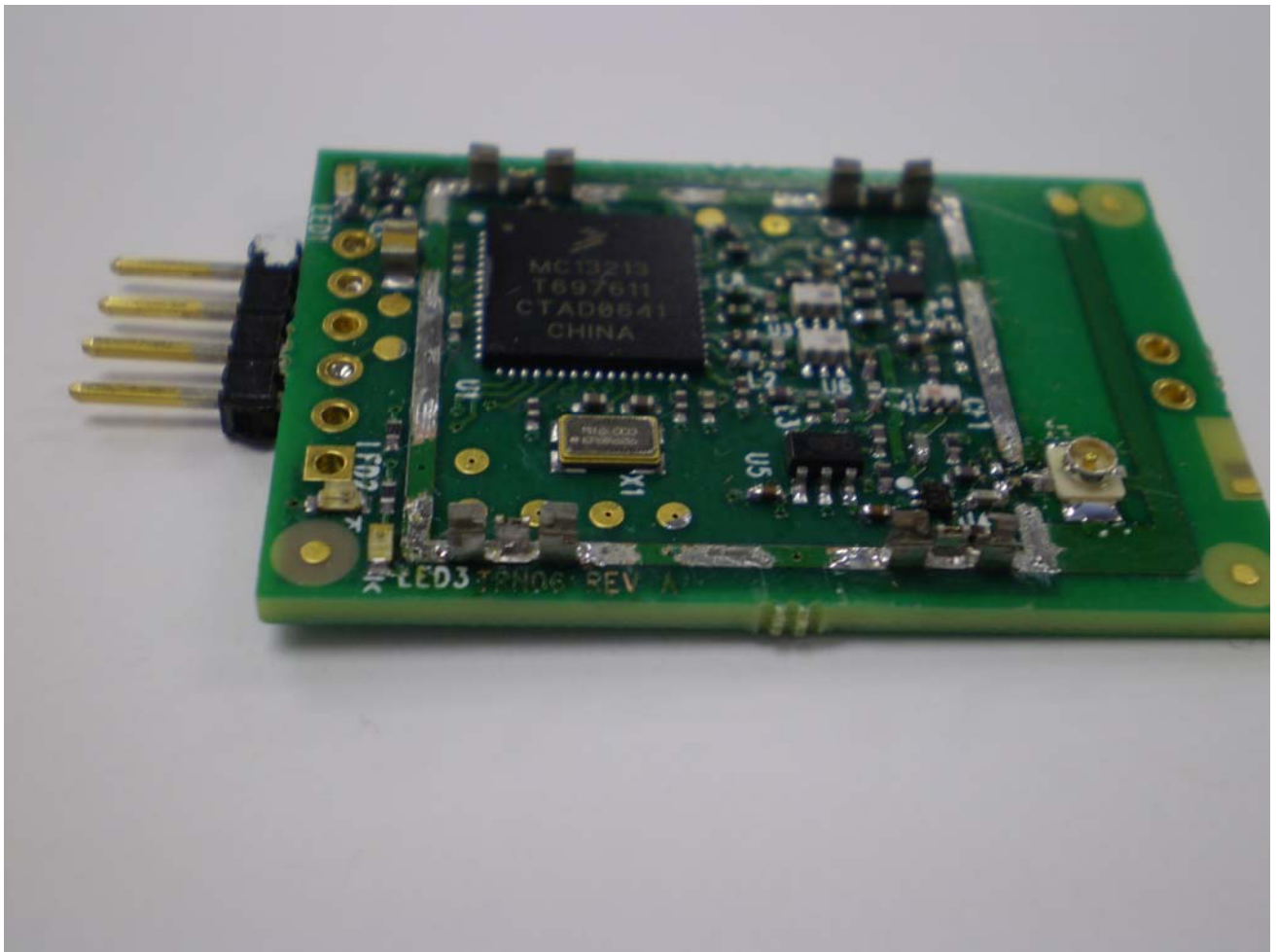


Trilliant Networks

22 dB Radio Module

FCC ID#: TMB-EM000033

Photo Five – Internal Side View of Board

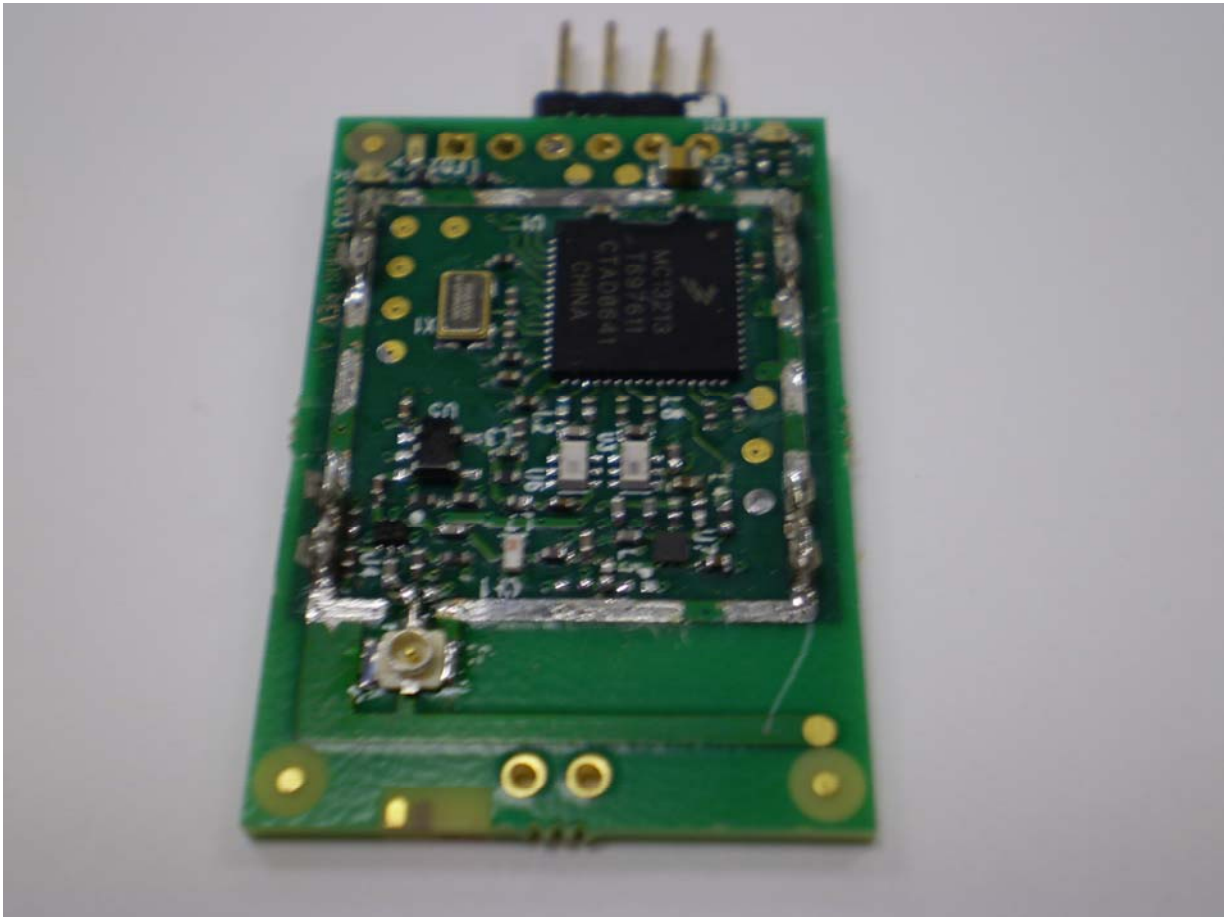


Trilliant Networks

22 dB Radio Module

FCC ID#: TMB-EM000033

**Photo Six – Internal
View of Board, Showing Antenna Connector**

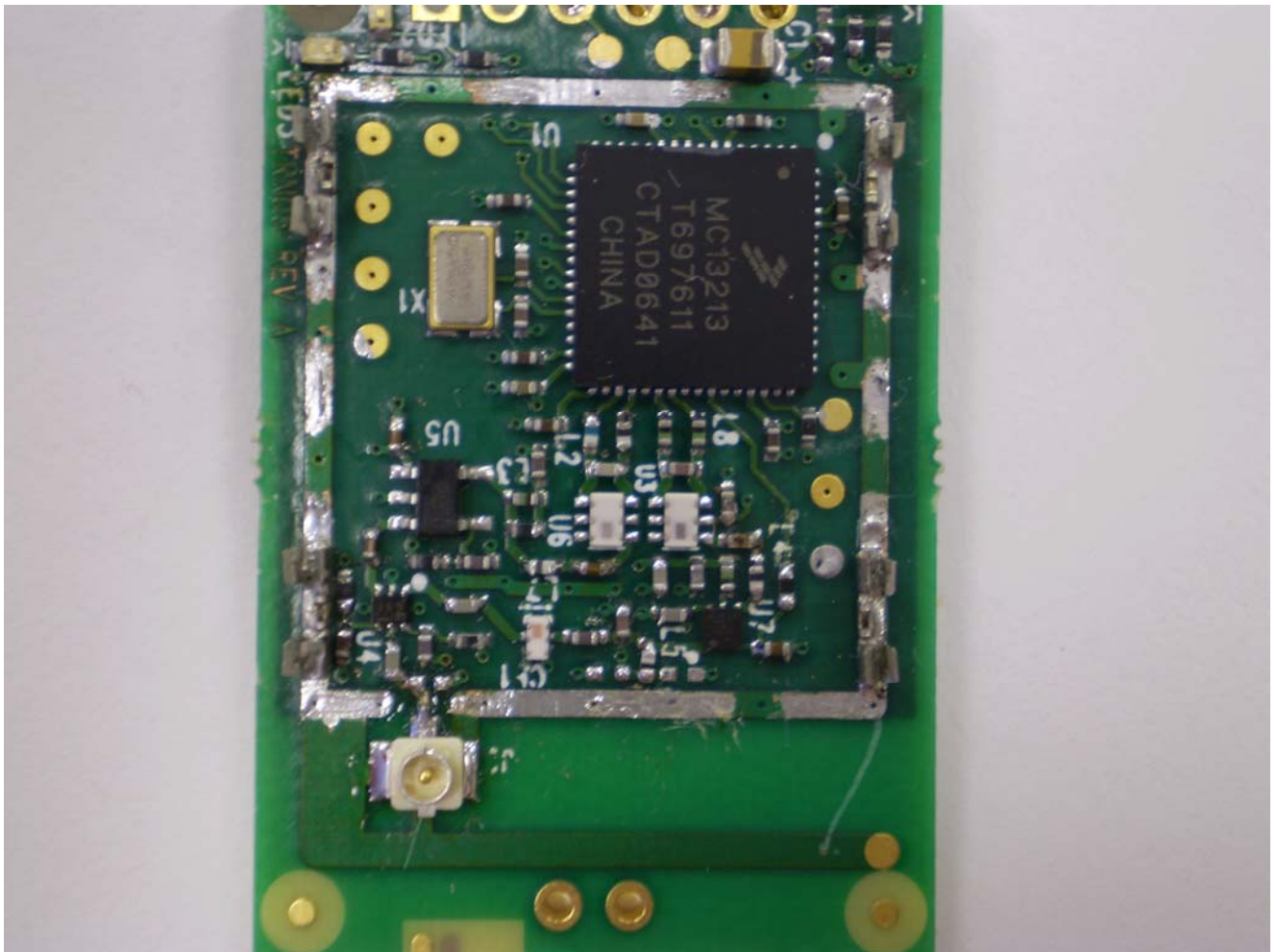


Trilliant Networks

22 dB Radio Module

FCC ID#: TMB-EM000033

Photo Seven – Internal
Close-Up of RF Section

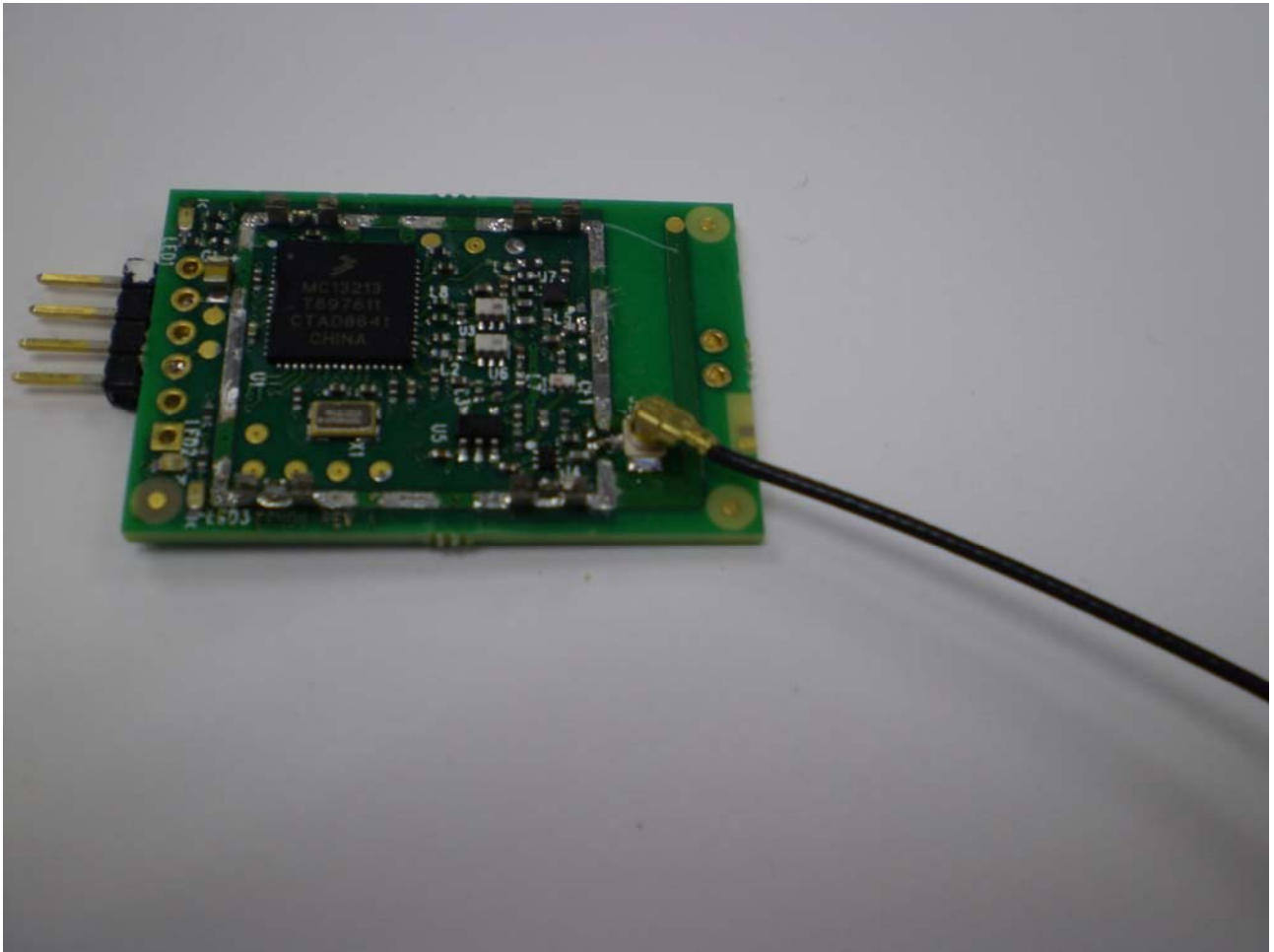


Trilliant Networks

22 dB Radio Module

FCC ID#: TMB-EM000033

Photo Eight – Internal Board with External Antenna Attached



Trilliant Networks

22 dB Radio Module

FCC ID#: TMB-EM000033

**Photo Nine – Internal
Full view of Board with External Antenna Connected
Reverse SMA Antenna Connector Utilized**

