

Gps Receiver
HIGH-PERFORMANCE GPS RECEIVER 



Gps Receiver
HIGH-PERFORMANCE GPS RECEIVER 

Operation Manual



GR-102 standard accessories :

- Battery (1200mAH)
- Plug-in charger
- CD-ROM
- Long & short lanyards



GR-102 Product features :

- Compact & sleek design
- Based on Sony CXD2951 GPS chip set
- Low power consumption: 90mA @ 3.3V (average)
- Rechargeable removable lithium-ion battery lasts for 12 hours of use
- 12 Channels with position accuracy of 5 meters
- Integrated patch antenna
- Three LEDs indicate Bluetooth, GPS and battery status
- On/Off switch
- Reset GPS button
- Slip-resistant pad

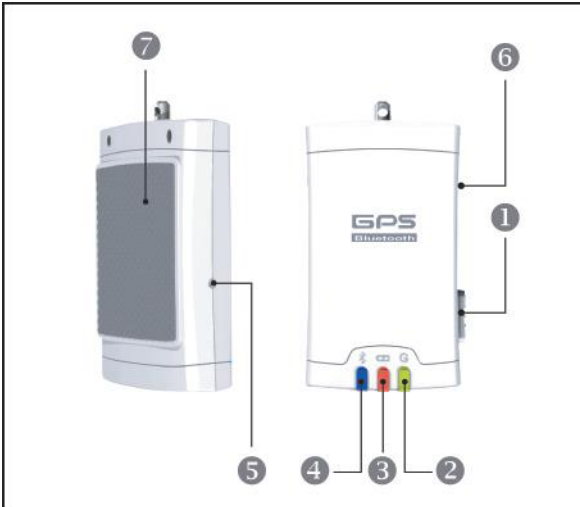


GR-102 product specifications :

1. Materials: ABS + PC Weight: 62 g
Dimension: 72x41x20 mm
2. TTFF:
 - Cold start: < 40s (AV 95%)
 - Warm start: < 33s (AV 95%)
 - Hot start: < 2s (AV 95%)
3. Dynamic conditions:
 - Altitude: < 18,000m
 - Velocity: < 500 m/s
 - Acceleration: < 4g
4. Environmental conditions:
 - Operating temperature: -20 °C ~ + 80 °C
 - Storage temperature: -30°C ~ + 80 °C
5. Sensitivity:
 - Tracking: -152dBm
 - Acquisition: -139dB
6. Work with any Bluetooth enabled device – any with Serial Port Profile (SPP)
7. Supports NMEA-0183 (V3.01)
8. With Bluetooth wireless technology
9. Bluetooth V1.1 certified with a Class 2 Bluetooth radio



GR-102 Part Guide :



1. Power switch
2. GPS indicator
3. Power indicator
4. Bluetooth indicator
5. Power jack
6. Reset button
7. Slip-resistant pad

✓ LED Indicator :

| | |
|----------------------------|---|
| GPS status (Green) | Still green light indicates GPS in acquisition |
| | Blinking green light indicates GPS position fixed |
| Bluetooth status (Blue) | Blinking blue light indicates Bluetooth in connection |
| | Off the blue light indicates wireless lose link to host |
| Battery status (Red) | Still red light indicates battery in charging |
| | Blinking red light indicates battery in low power |
| | Off the red light indicates fully charged |

✓ **Reset Button :**

The reset function can be activated while being pressed 3 seconds and turn to “ cold start “

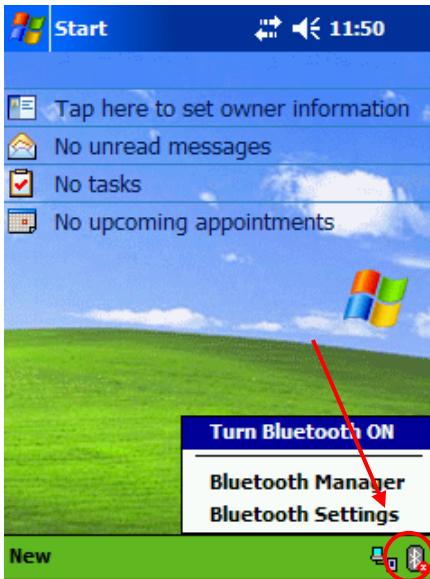
✓ **Access Code :**

Some PDA's might require an access code before starting to use the GPS receiver. In this case , please enter “0000” as the access code.



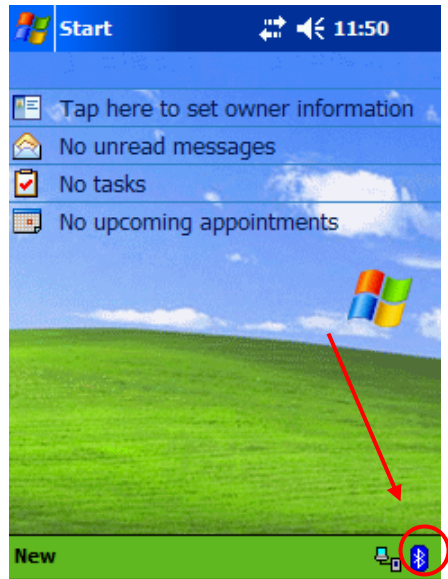
GR-102 Operating instruction :

Step 1



Click Bluetooth icon in the bottom right corner.
Then click "Turn Bluetooth On".

Step 2

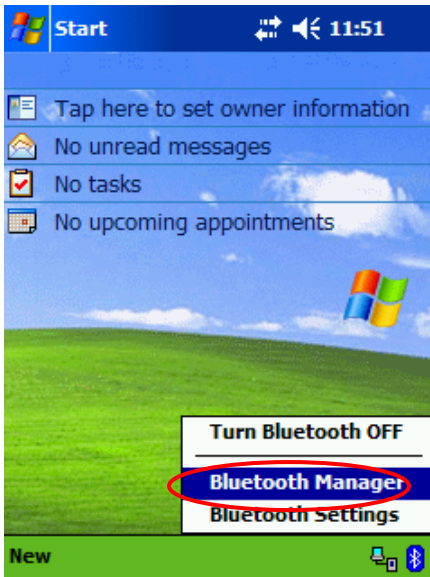


Click Bluetooth icon in the bottom right corner again.

GR-102

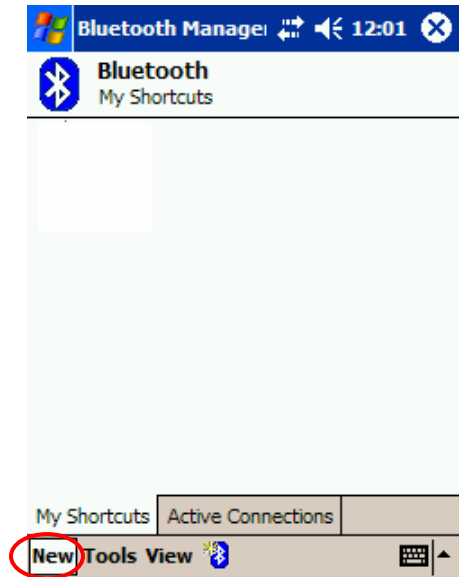
Operating instruction :

Step 3



Click "Bluetooth Manager"

Step 4

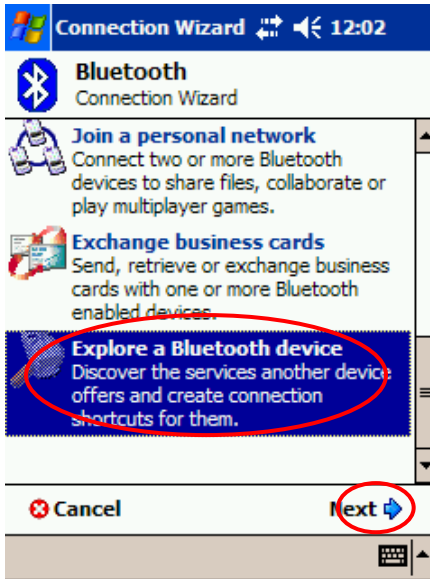


Click "New"

GR-102

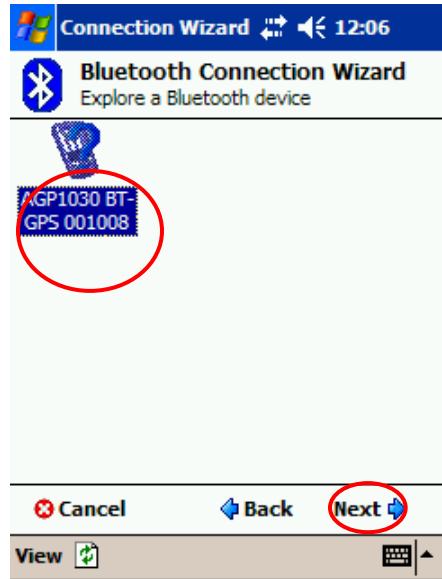
Operating instruction :

Step 5



Click “ Explore a Bluetooth device “.
Then click “Next”.

Step 6



Click “AGP1030”.
Then “Next”

GR-102

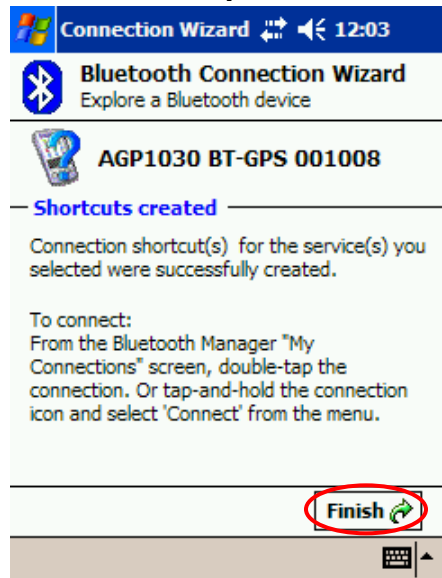
Operating instruction :

Step 7



Click “Serial Port”.
Then “Next”

Step 8

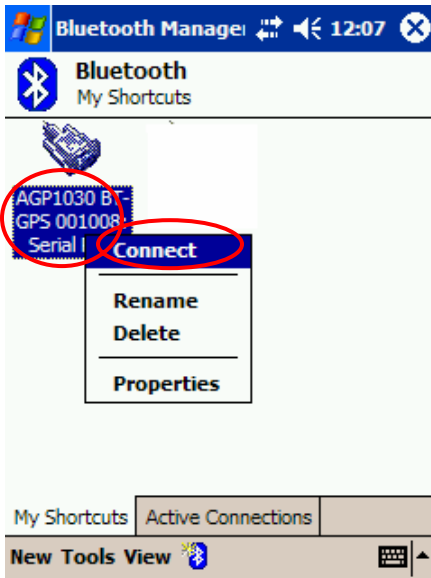


Click “Finish”

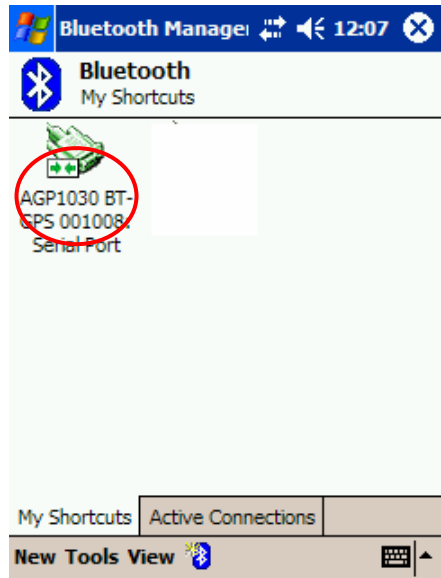
GR-102

Operating instruction :

Step 9



Step 10



After the setup is done, click
“AGP1030 BT”.
Then “Connect”

When screen appears double
arrows,
it means your PDA is
successfully hooked up



Application (with required software) :

- Vehicle tracking
- Street-level navigation
- Car navigation
- Marine navigation
- Suitable for PDA, Desktop PC and Laptop



Battery/Power supply :

- Before starting to use the product, please be sure to fully charge the battery to ensure the long operating time designed.
- Use the enclosed charger and connect it with the power jack on the product.



Cautions :

- For your safety, please do not operate the device while

driving to avoid distraction.

- Please switch off the device on the plane or any places where you are requested.
- Only use enclosed accessories to avoid causing damage to the device.
- Do not disassemble the device on your own.
- Do not expose the device in rain or any humid environment.
- Protect the device from crash.
- Do not link the device with any incompatible accessories.

Federal Communications Commission (FCC) Statement

15.21

You are cautioned that changes or modifications not expressly approved by the part responsible for compliance could void the user's authority to operate the equipment.

15.105(b)

This equipment has been tested and found to comply with the limits for a Class B digital device, pursuant to part 15 of the FCC rules. These limits are designed to provide reasonable protection against harmful interference in a residential installation. This equipment generates, uses and can radiate radio frequency energy and, if not installed and used in accordance with the instructions, may cause harmful interference to radio communications. However, there is no guarantee that interference will not occur in a particular installation. If



this equipment does cause harmful interference to radio or television reception, which can be determined by turning the equipment off and on, the user is encouraged to try to correct the interference by one or more of the following measures:

- Reorient or relocate the receiving antenna.
- Increase the separation between the equipment and receiver.
- Connect the equipment into an outlet on a circuit different from that to which the receiver is connected.
- Consult the dealer or an experienced radio/TV technician for help.

Operation is subject to the following two conditions:

- 1) this device may not cause interference and
- 2) this device must accept any interference, including interference that may cause undesired operation of the device.

FCC RF Radiation Exposure Statement:

This equipment complies with FCC radiation exposure limits set forth for an uncontrolled environment. End users must follow the specific operating instructions for satisfying RF exposure compliance. This transmitter must not be co-located or operating in conjunction with any other antenna or transmitter.