

---

# Data Sheet

CUSTOMER : Lenovo

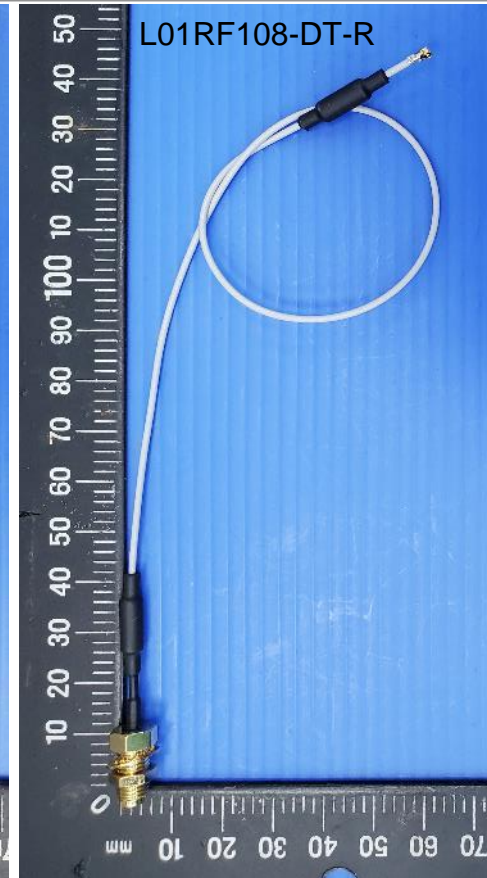
Model Name : SA37A47021

VENDER : Luxshare – ICT

ADDRESS : 7F No. 568, Sec. 1, Minsheng N. Rd.,  
Guishan Dist., Taoyuan City 333 , Taiwan (R.O.C.)

1. Antenna and Cable Description
2. Technical Specifications
3. Assembly Drawing
4. Performance Data

# 1. Antenna and Cable Description



## 2. Technical Specifications

### Antenna

<b>Application Band</b>	<b>2400MHz~2500MHz</b>
	<b>5150MHz~5850MHz</b>
<b>Operating temperature range</b>	<b>-40 ~ +85°C</b>
<b>S.W.R.</b>	<b>&lt;2.0</b>
<b>Antenna Peak Gain without RF Cable</b>	<b>2.4Ghz band 2.8 dBi Max</b>
	<b>5.0 ~ 5.9Ghz band 2.6 dBi Max</b>
<b>Efficiency</b>	<b>&gt;50%</b>
<b>Impedance</b>	<b>50 Ohm</b>
<b>Polarization / Azimuth</b>	<b>Linear / Omni-directional</b>
<b>Coaxial Cable</b>	<b>50 Ohm / O.D 1.78mm</b>

## 2. Technical Specifications

### RF Cable

<b>Frequency</b>	<b>1 ~ 6GHz</b>
<b>Operating temperature range</b>	<b>-40 ~ +85°C</b>
<b>Insertionloss (450mm)</b>	<b>2.4GHz~2.5GHz 1.1 dB Min</b>
	<b>5.15~5.85GHz 1.9 dB Min</b>
<b>Insertionloss (470mm)</b>	<b>2.4GHz~2.5GHz 1.2 dB Min</b>
	<b>5.15~5.85GHz 2.0 dB Min</b>
<b>Coaxial Connector</b>	<b>50 Ohm RPSMA-BJ-1.37AS(Au)</b>
	<b>I-PEX MHF4-L</b>

## 2. Technical Specifications

---

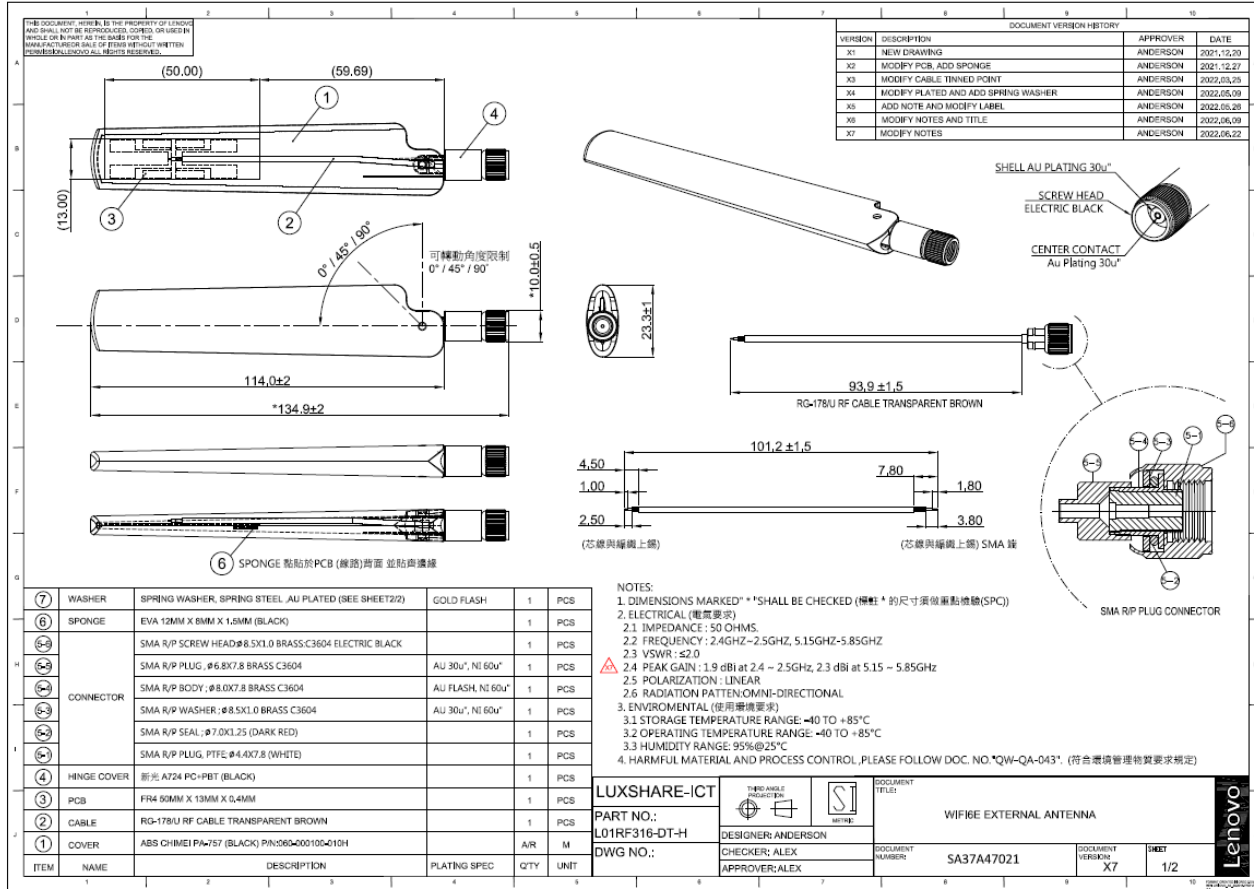
Peak GAIN Specification (Cable Color Gray)	2.4GHz Band GAIN(dBi) MAX	5GHz Band GAIN(dBi) MAX
Antenna without RF CABLE L01RF316-DT-H	2.8	2.6
Antenna with 450mm RF CABLE L01RF316-DT-H+L01RF108-DT-R	1.7	0.7

## 2. Technical Specifications

---

Peak GAIN Specification (Cable Color White)	2.4GHz Band GAIN(dBi) MAX	5GHz Band GAIN(dBi) MAX
Antenna without RF CABLE L01RF316-DT-H	2.8	2.6
Antenna with 470mm RF CABLE L01RF316-DT-H+L01RF107-DT-R	1.6	0.6

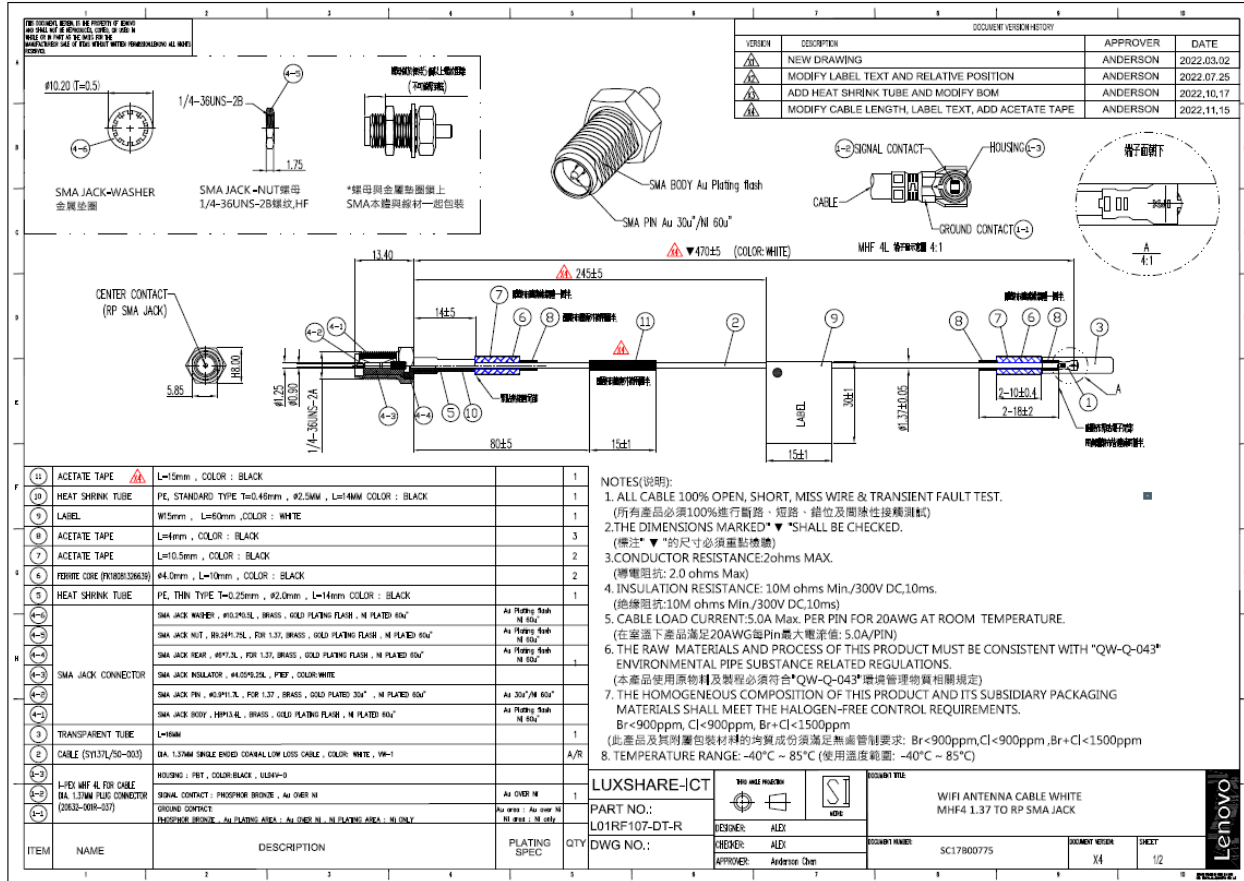
# 3. Assembly Drawing



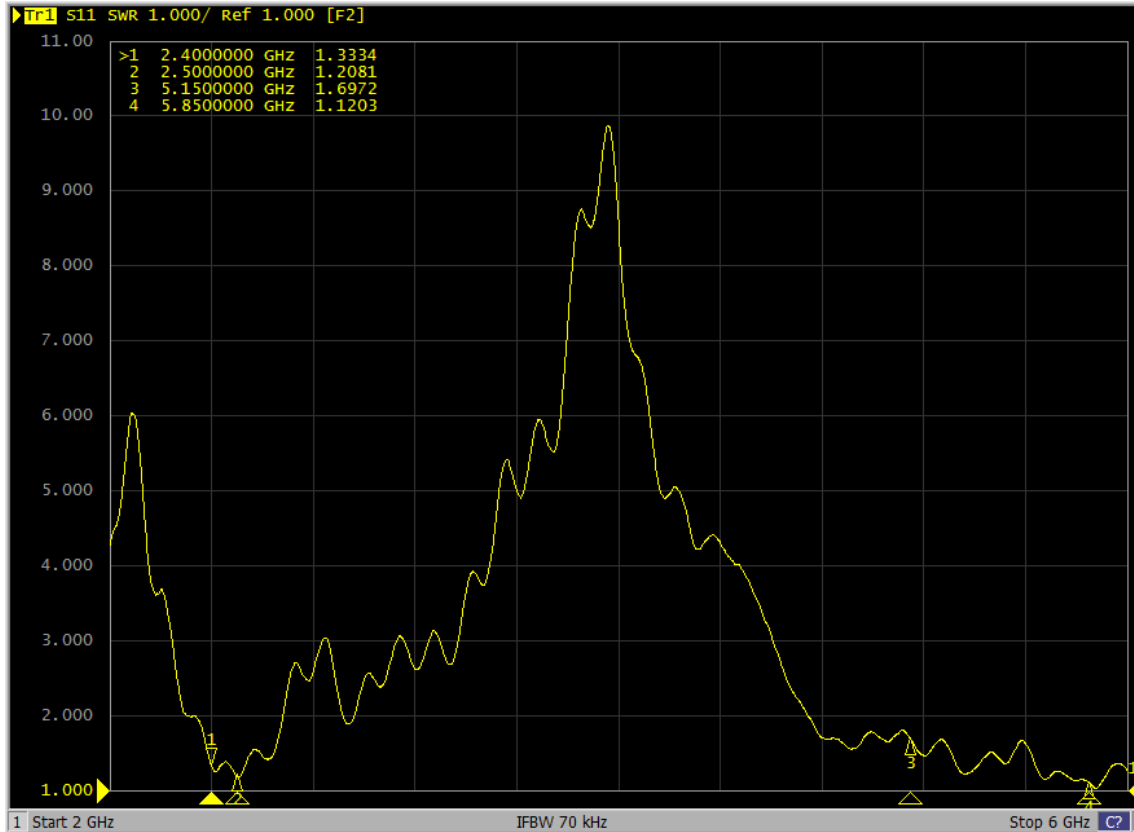




# 3. Assembly Drawing



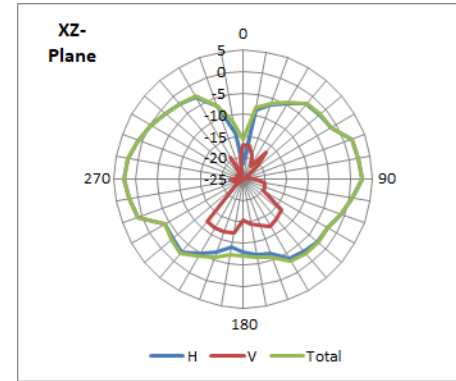
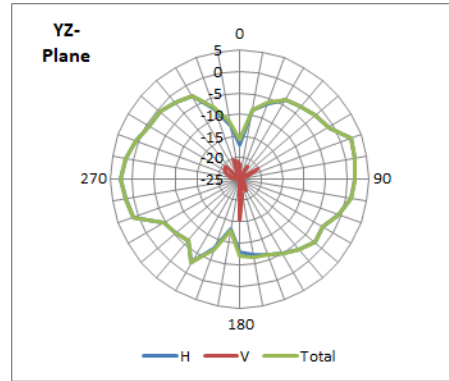
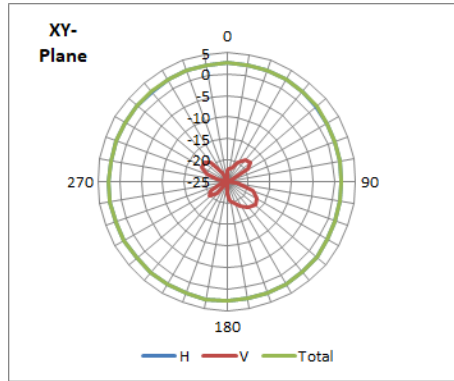
## 4. Performance Data : S.W.R ( Without RF Cable )



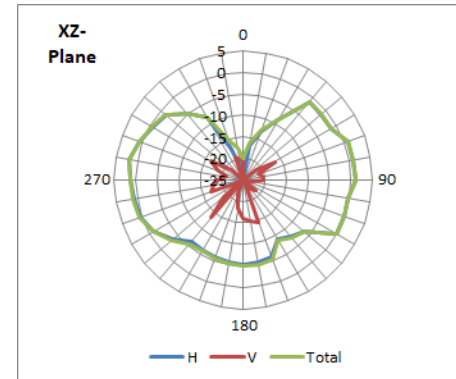
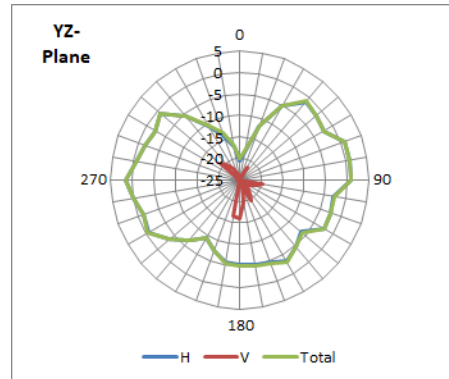
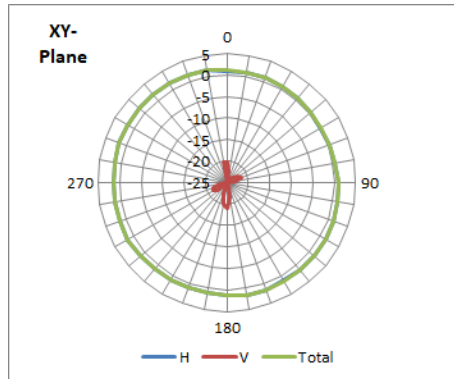
# 4. Performance Data : Pattern ( Without RF Cable )



2450 MHz

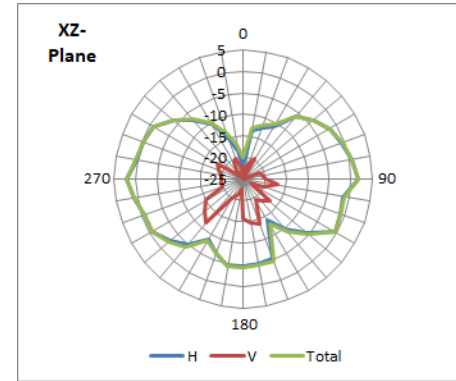
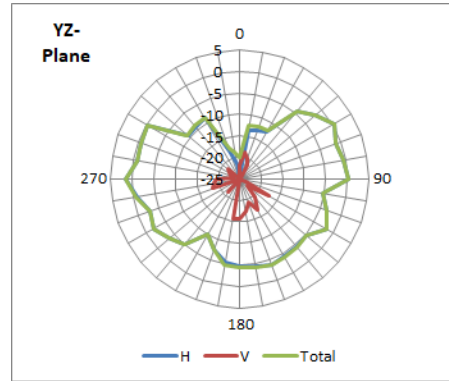
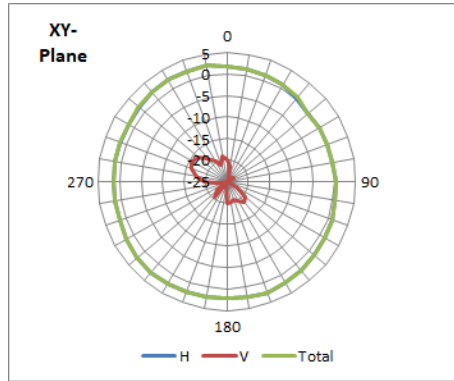


5150 MHz



# 4. Performance Data : Pattern ( Without RF Cable )

5350 MHz



5850 MHz

