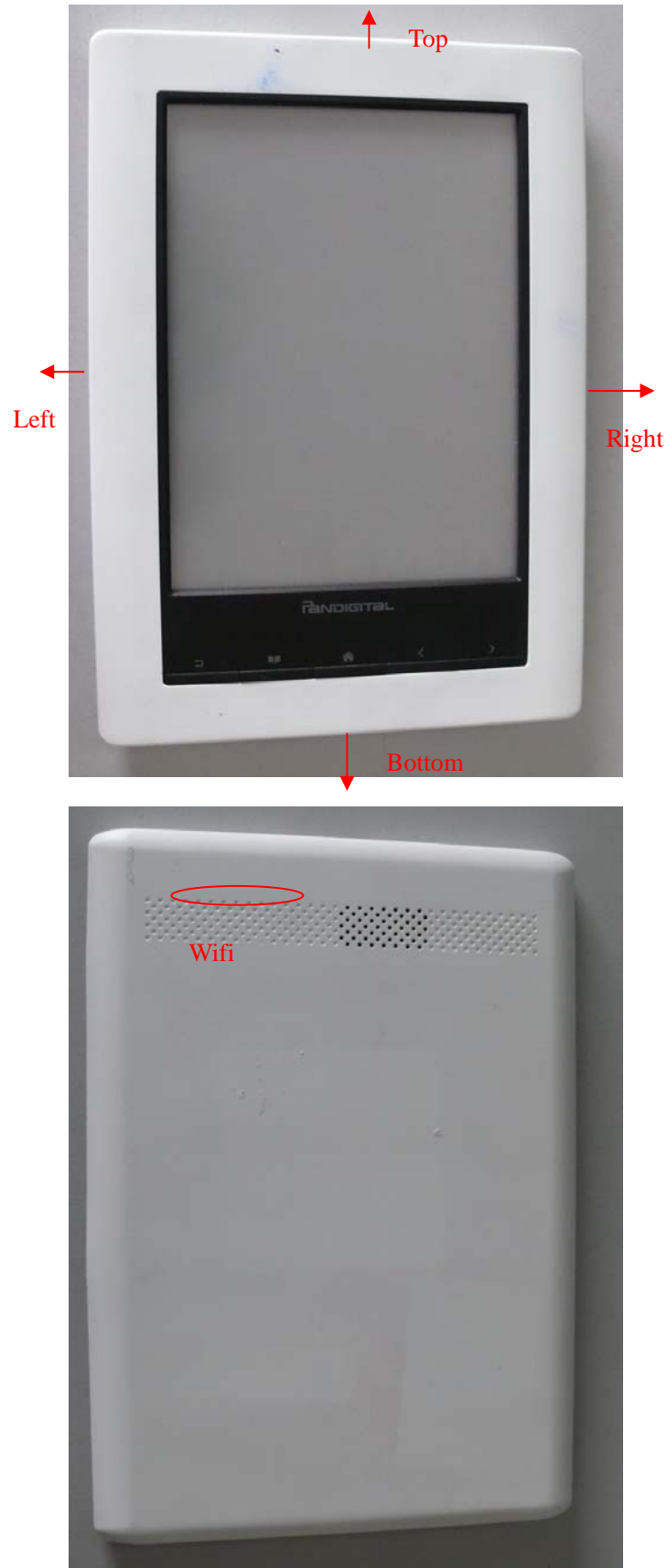


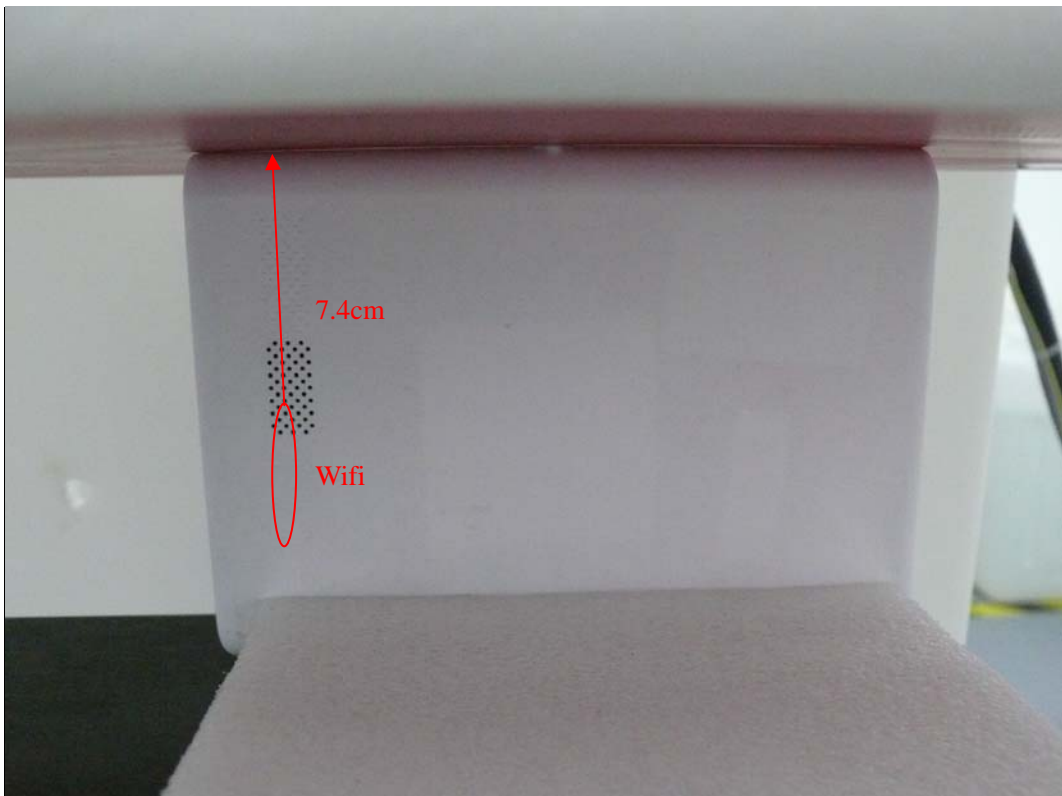
ANNEX G: The EUT Appearances



Picture 3: Constituents of the EUT

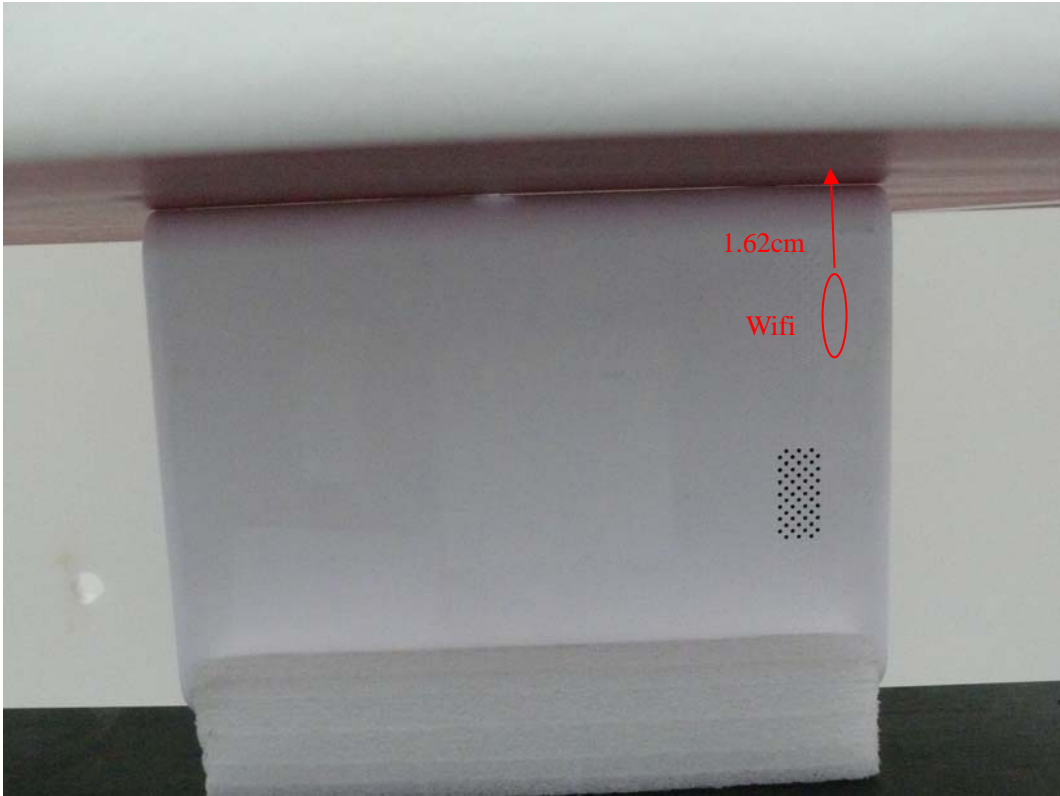


Picture 4: Test position 1

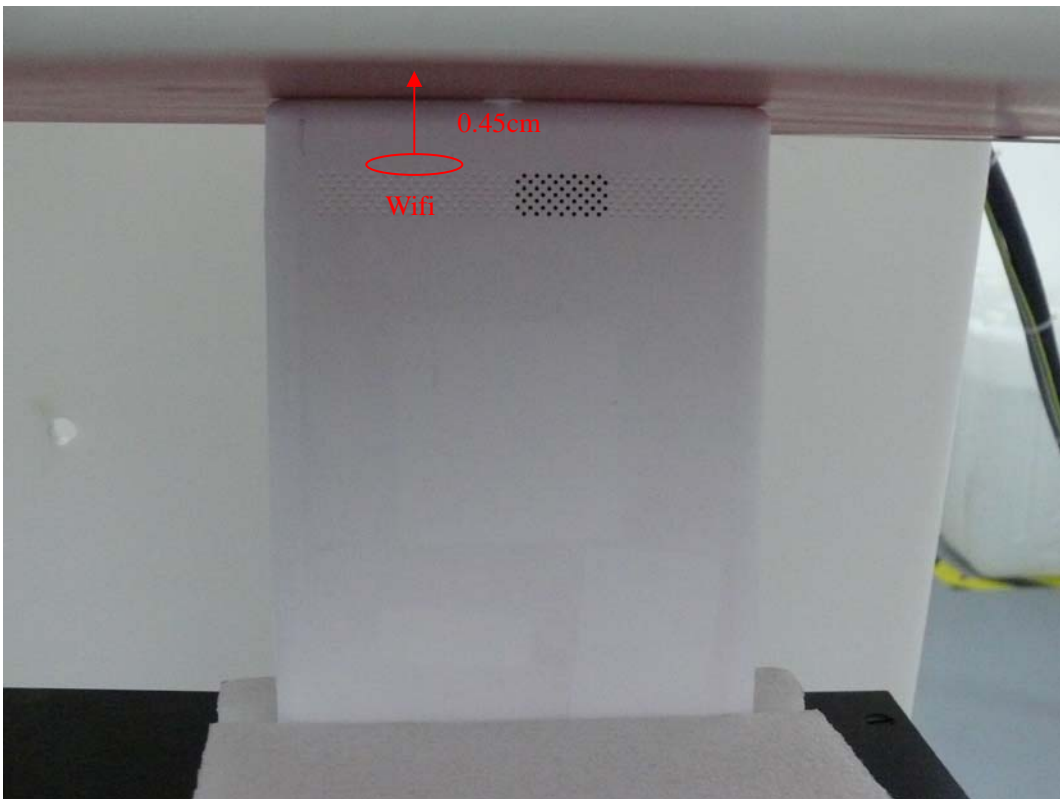


Picture 5: Test position 2

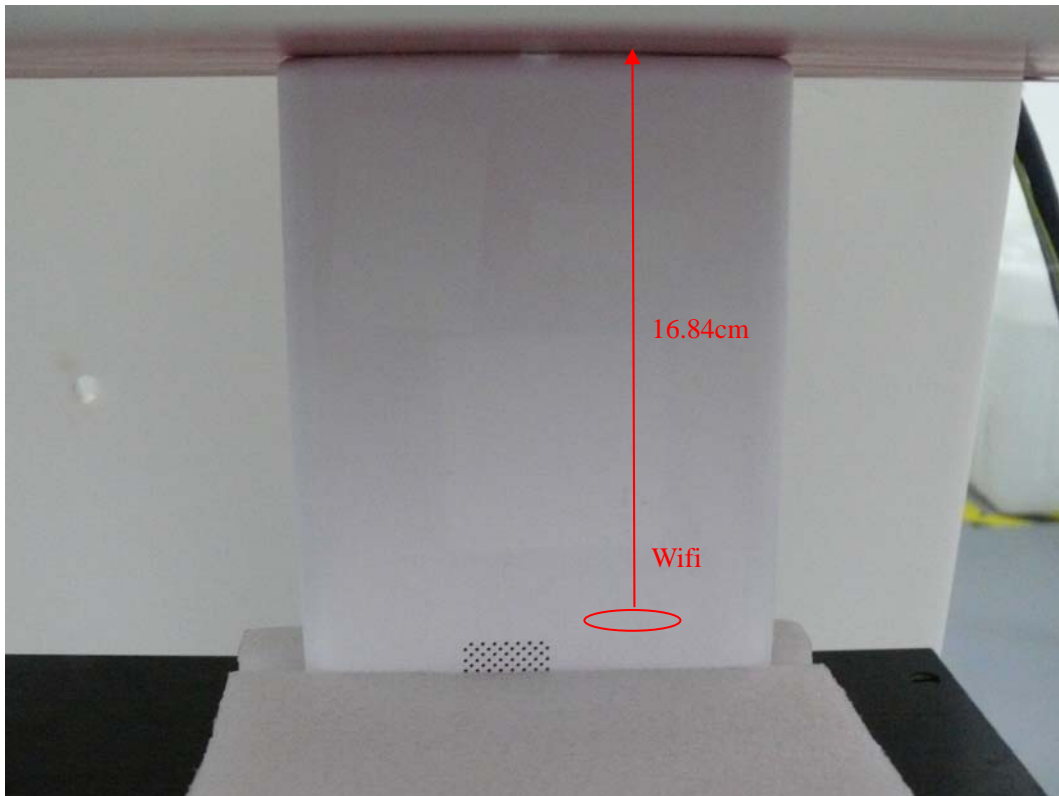
(This is not the most conservative antenna – to – user distance at edge mode. According to KDB 447498 4) ii) (2) –SAR is required only the edge with the most conservative exposure conditions, No SAR)



Picture 6: Test position 3



Picture 7: Test position 4



Picture 8: Test position 5

(This is not the most conservative antenna – to – user distance at edge mode. According to KDB 447498 4) ii) (2) –SAR is required only the edge with the most conservative exposure conditions, No SAR)

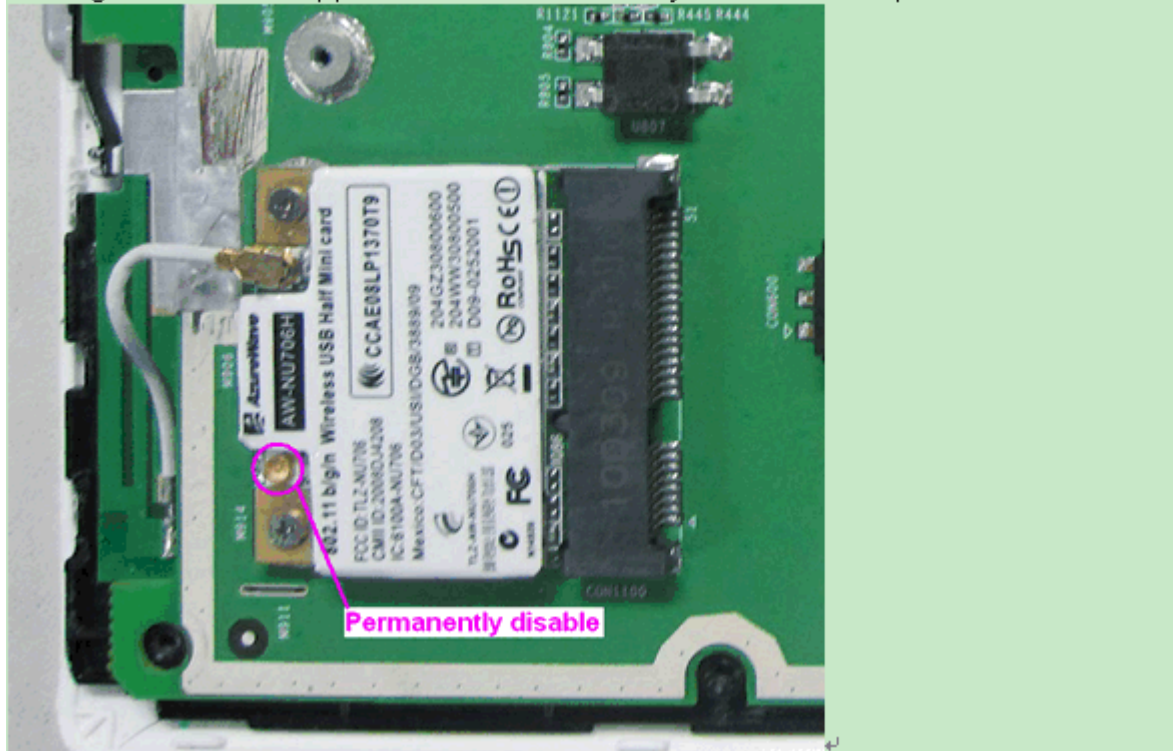
ANNEX H: Antenna-To-Antenna/User Separation Distances



Back view

TA Technology (Shanghai) Co., Ltd. Test Report

For the Pandigital Novel, it is using the internal firmware of the EEPROM to permanently disable the function of Antenna 2, so that only antenna 1 used for Pandigital Novel to support 1T1R. Please kindly refer to below photo as attestation



TA Technology (Shanghai) Co., Ltd. Test Report

ANNEX I: The Bottom of EUT to the Antenna Separation Distances

