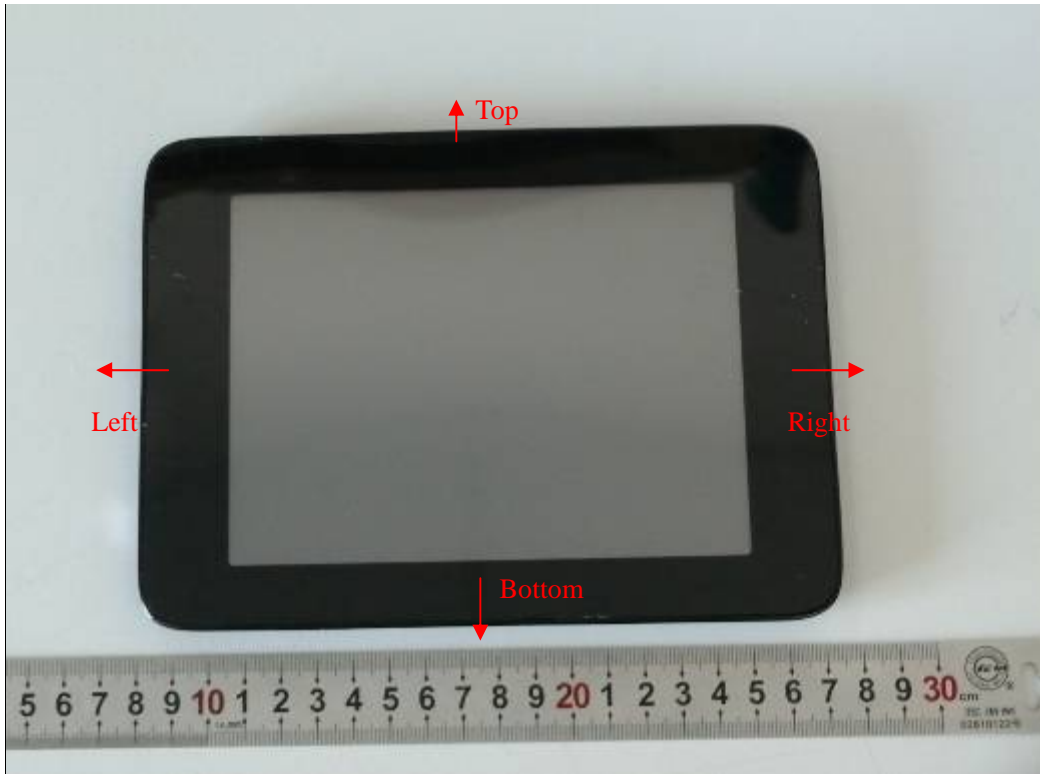


**ANNEX G: The EUT Appearances**



**Picture 3: Constituents of the EUT**



Picture 4: Test position 1



Picture 5: Test position 2

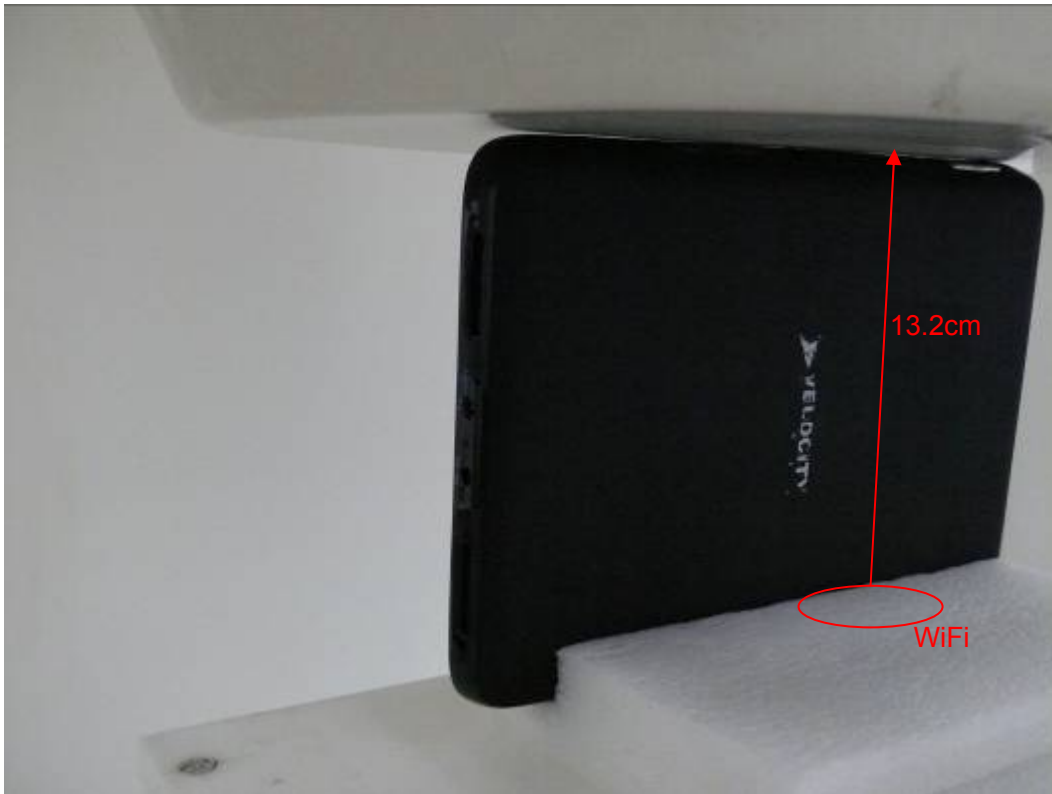
(This is not the most conservative antenna – to – user distance at edge mode. According to KDB 447498 4) ii) (2) –SAR is required only the edge with the most conservative exposure conditions, No SAR)



Picture 6: Test position 3



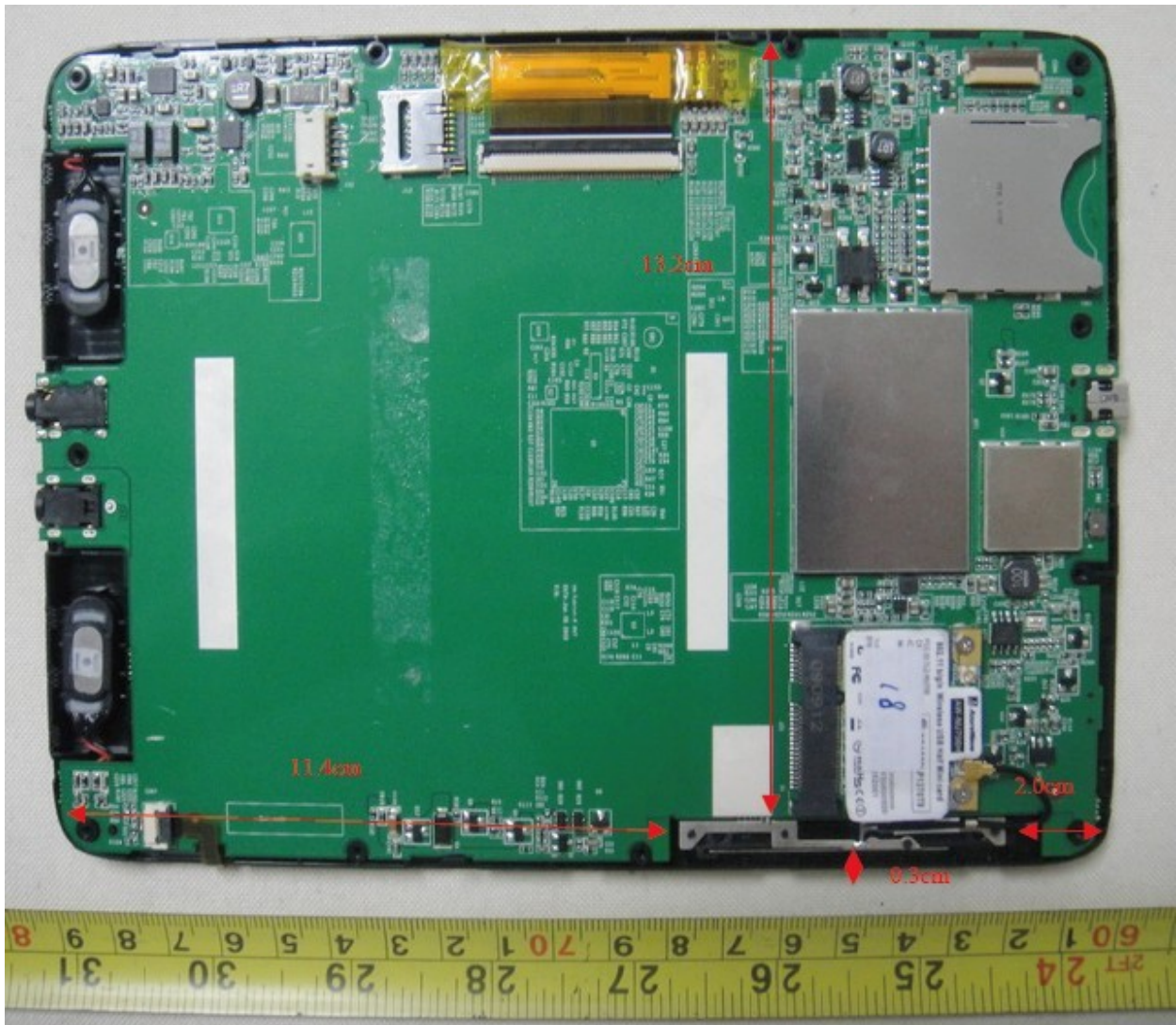
Picture 7: Test position 4



**Picture 8: Test position 5**

(This is not the most conservative antenna – to – user distance at edge mode. According to KDB 447498 4) ii) (2) –SAR is required only the edge with the most conservative exposure conditions, No SAR)

**ANNEX H: Antenna-To-Antenna/User Separation Distances**



Back view