

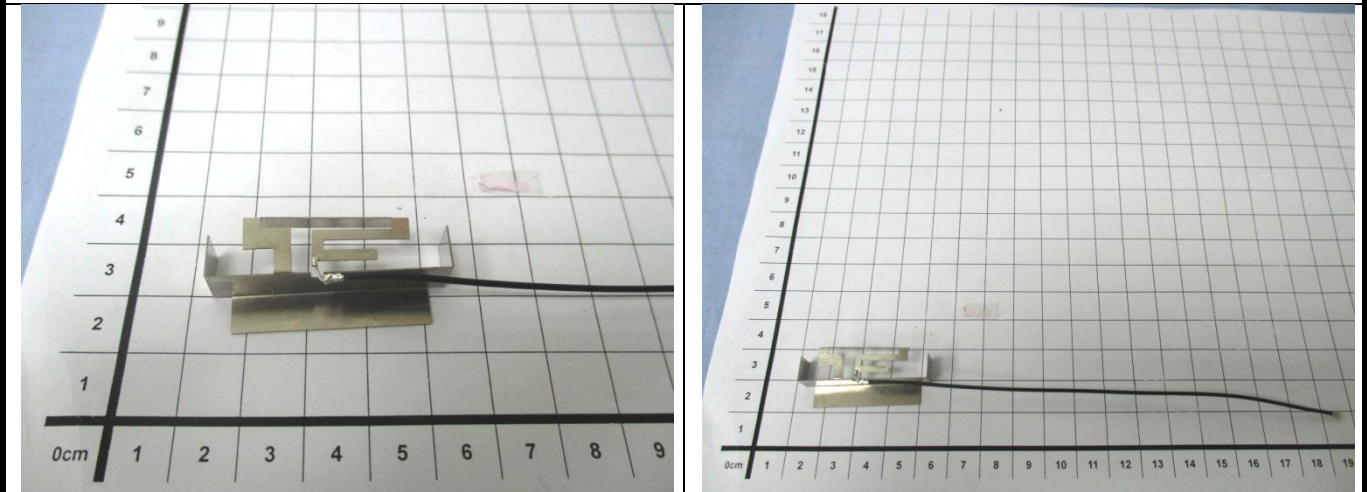


Appendix D. Photographs of EUT and Setup

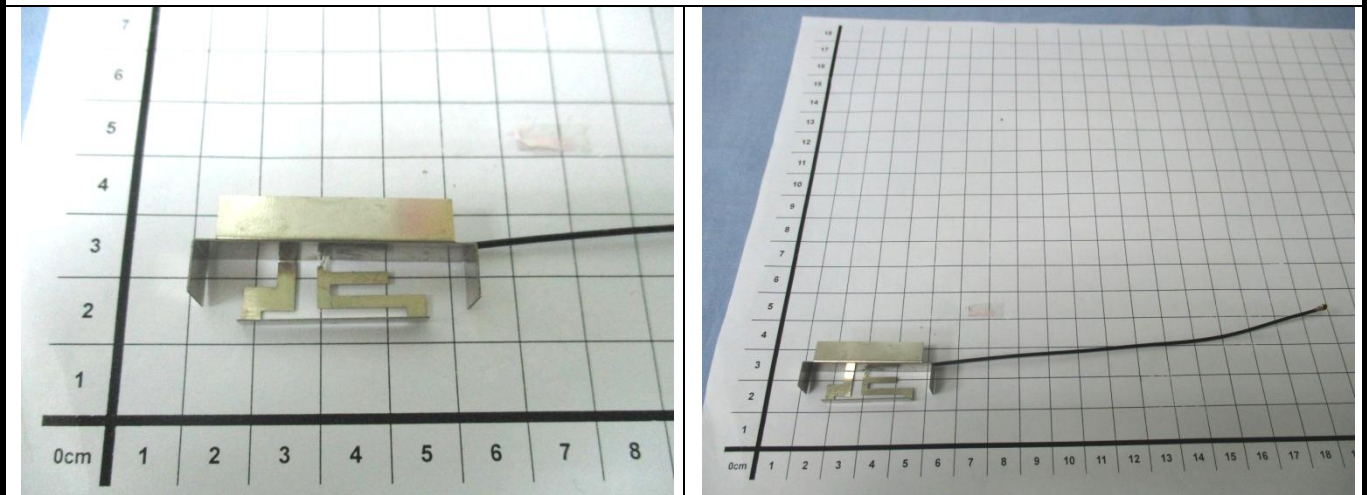
FCC SAR Test Report

<Photographs of EUT>

Antenna Front Face

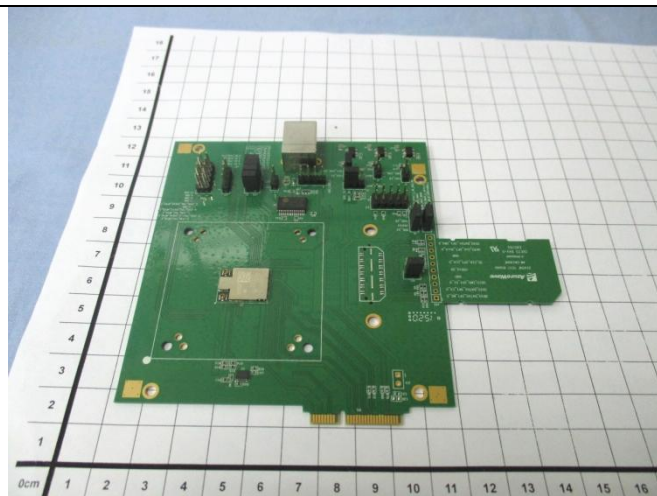


Antenna Rear Face

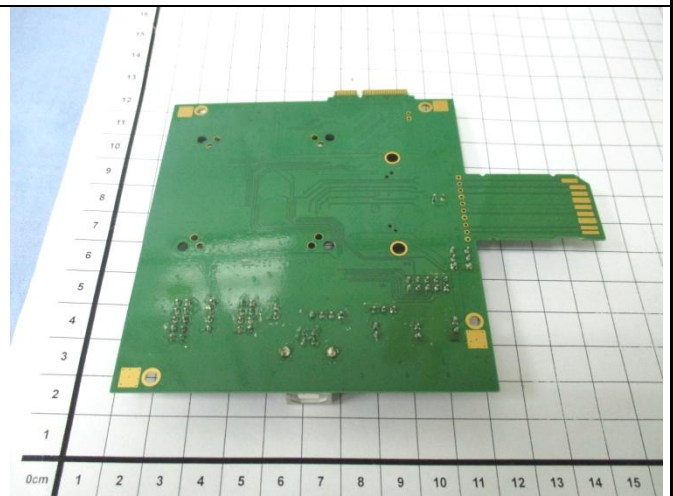


FCC SAR Test Report

Module Front Face



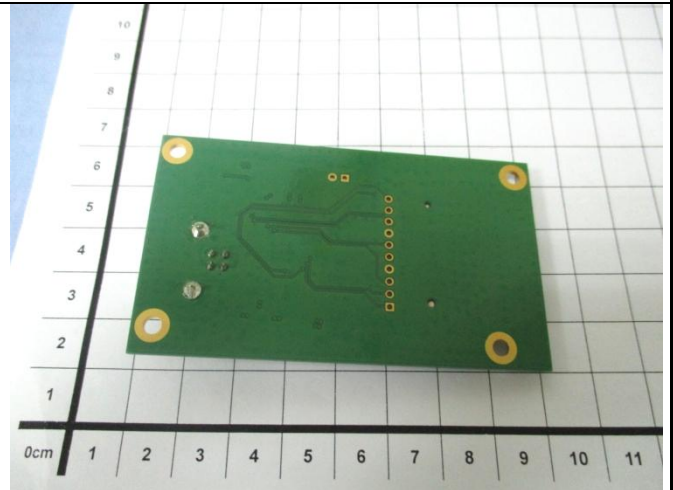
Module Rear Face

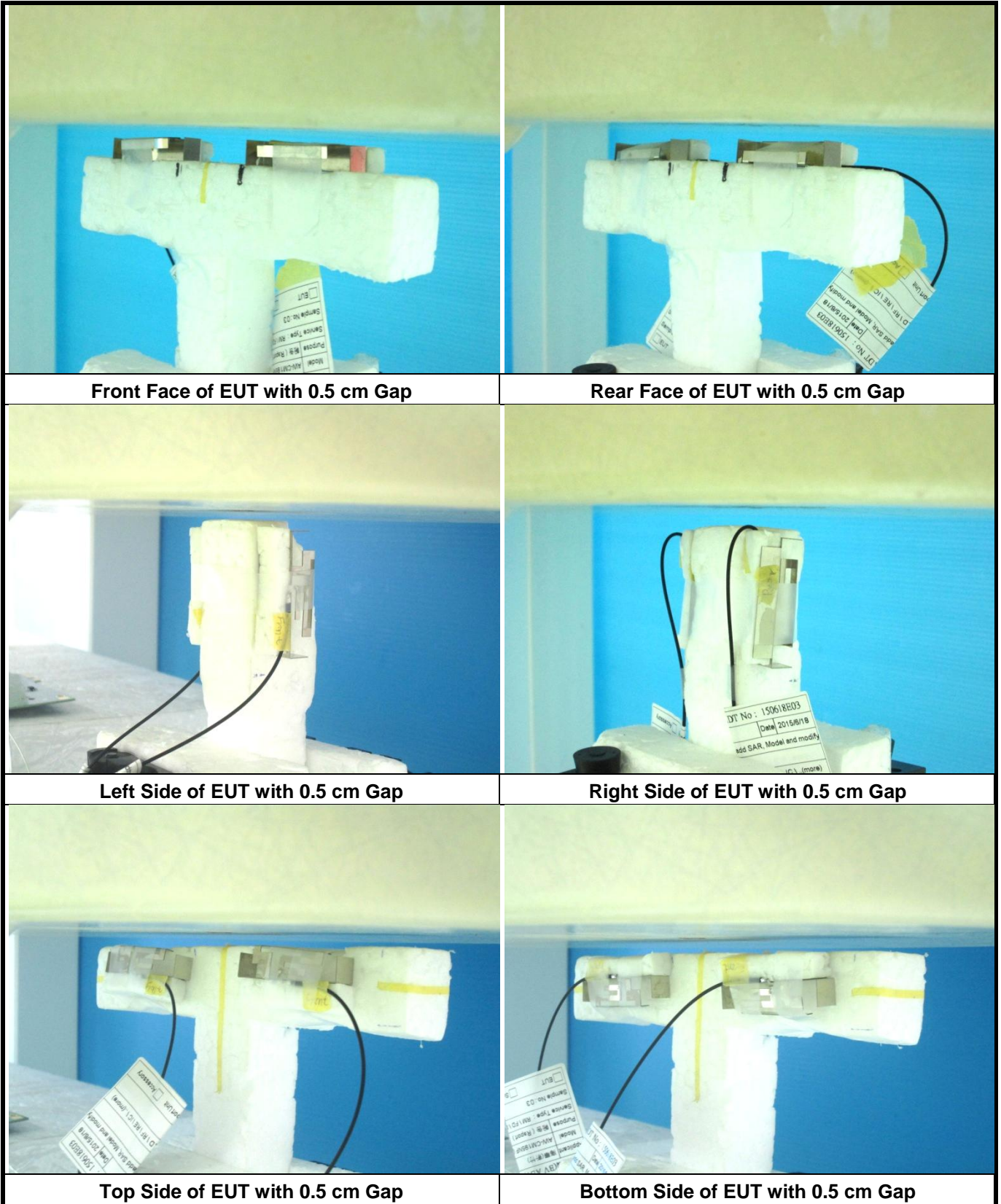


Jig Front Face



Jig Rear Face



FCC SAR Test Report
<Photographs of SAR Setup>


Note: The separation distance between these two antennas is 3 cm.