

Wireless 802.11b/g/n USB Adapter

Quick Installation Guide

I.Driver Installation

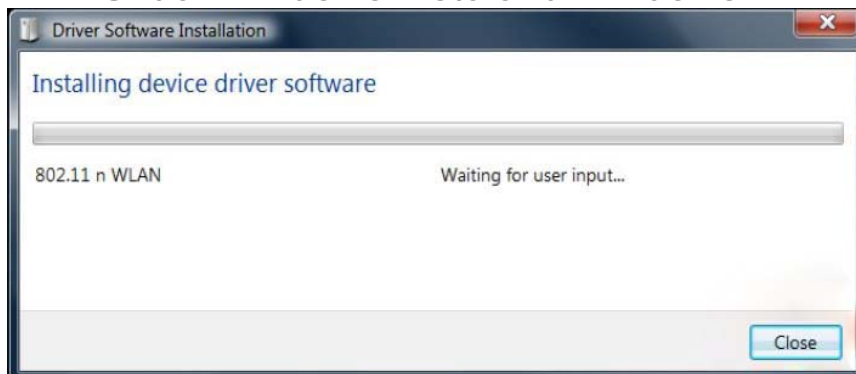
Please follow the following instructions to install your new wireless USB Adapter:

1. Insert the USB wireless network card into an empty USB 2.0 port of your computer when computer is switched on. Never use force to insert the card, if you feel it's stuck, flip the card over and try again.
2. The following message will appear on your computer, click '**Cancel** / **Close**'.

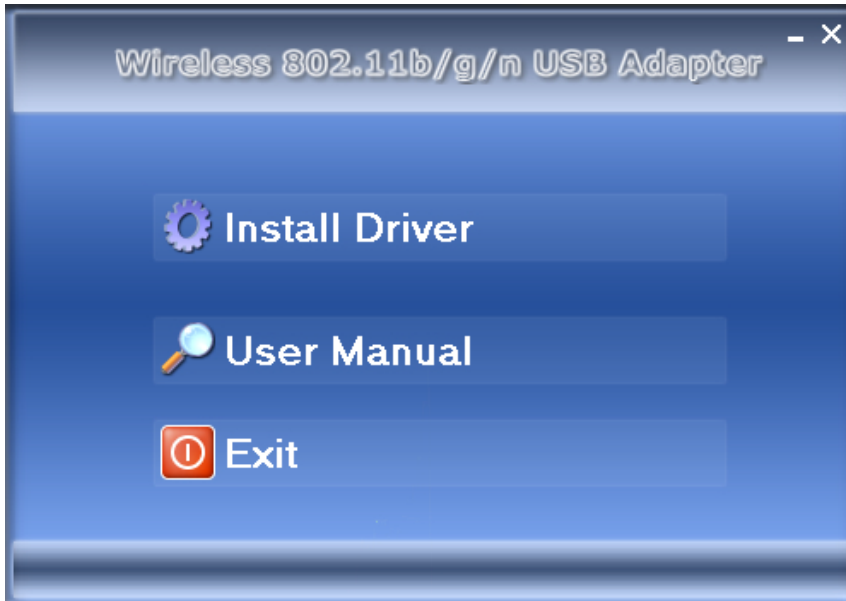
Under Windows XP



Under Windows Vista and Windows 7

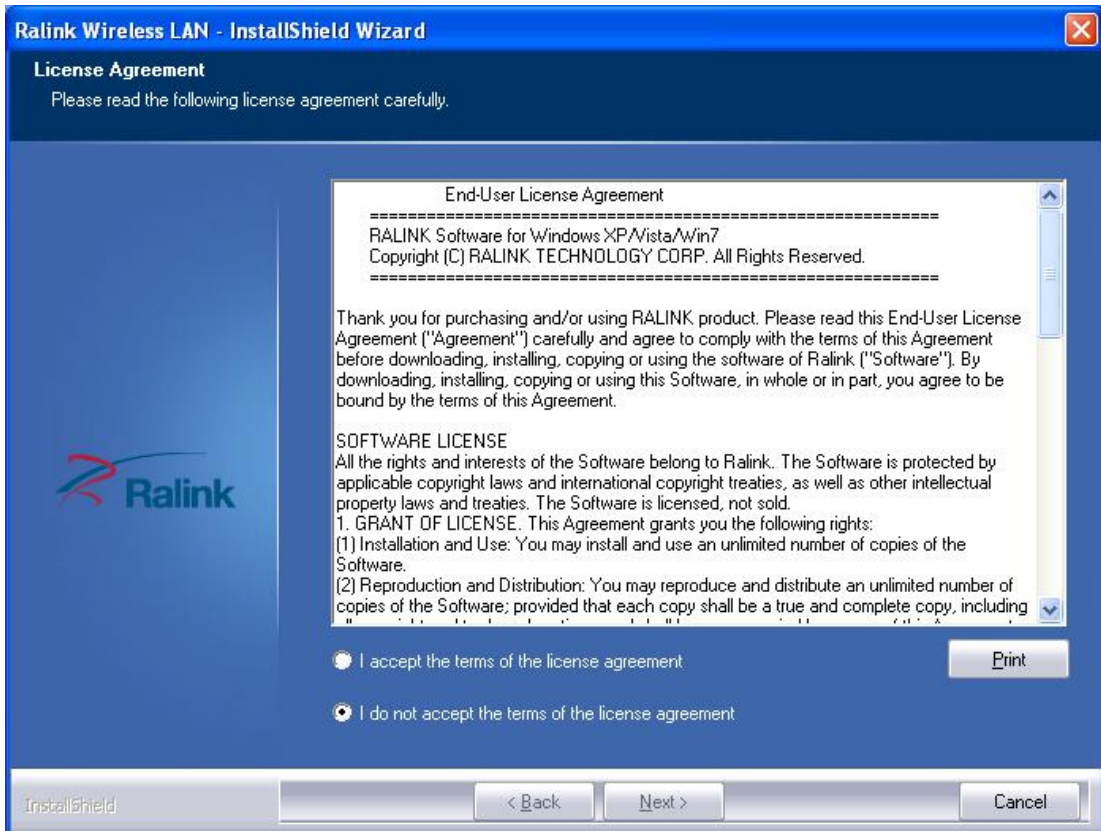


3. Insert the driver CD into your CD-ROM. You can see autorun screen below. if not, you can double click 'autorun.exe' on CD.

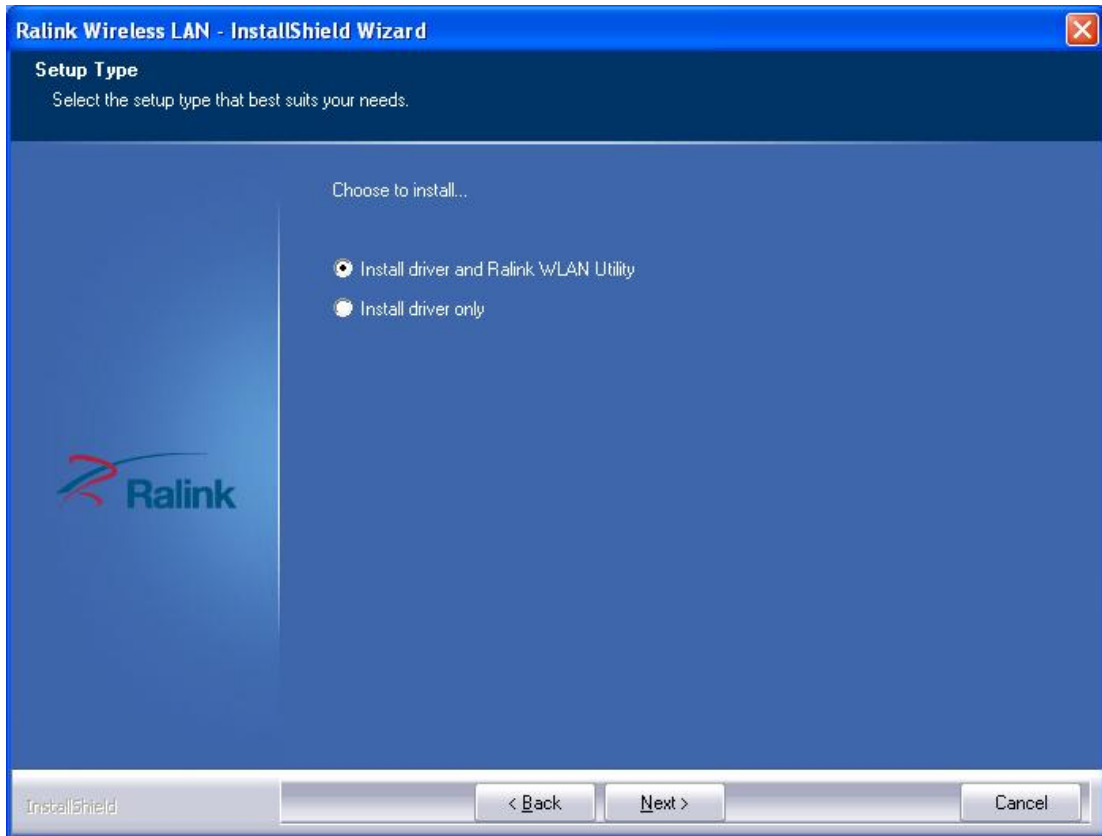


Click 'Install Driver' to start the installation procedure.

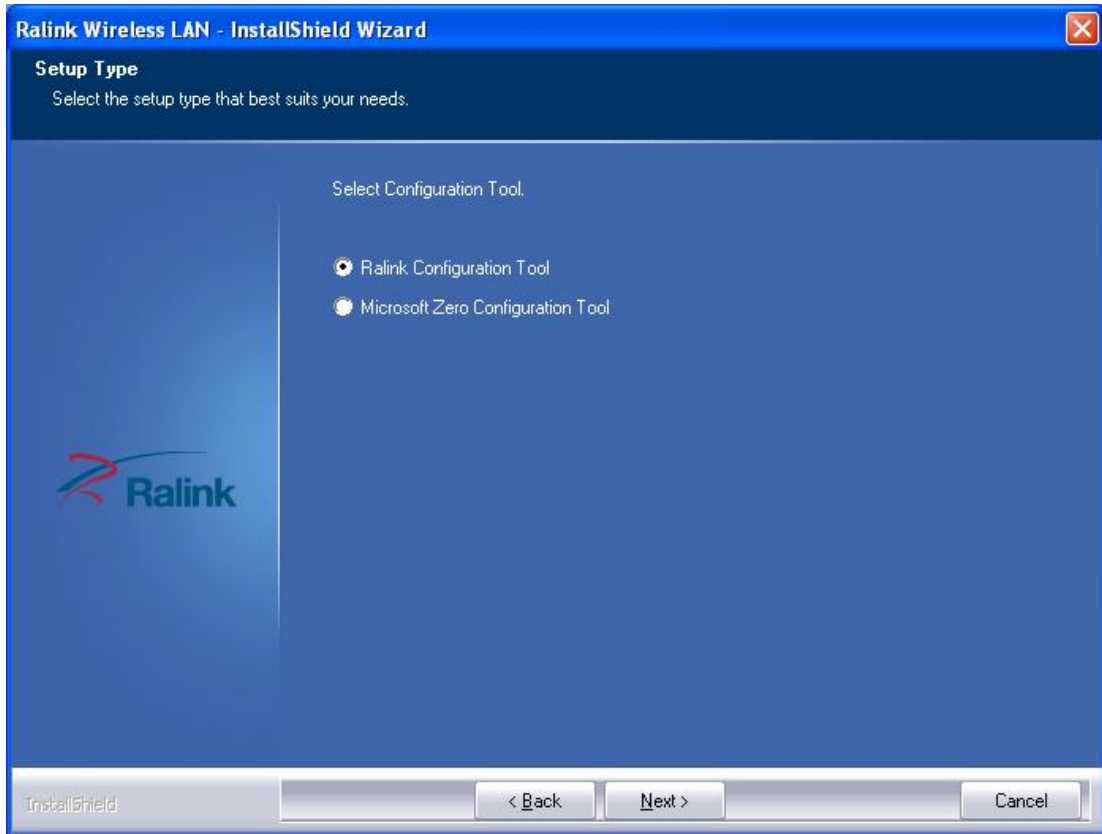
4. Installation descriptions shown. Click I accept the of the license agreement ,Click 'Next' to continue.



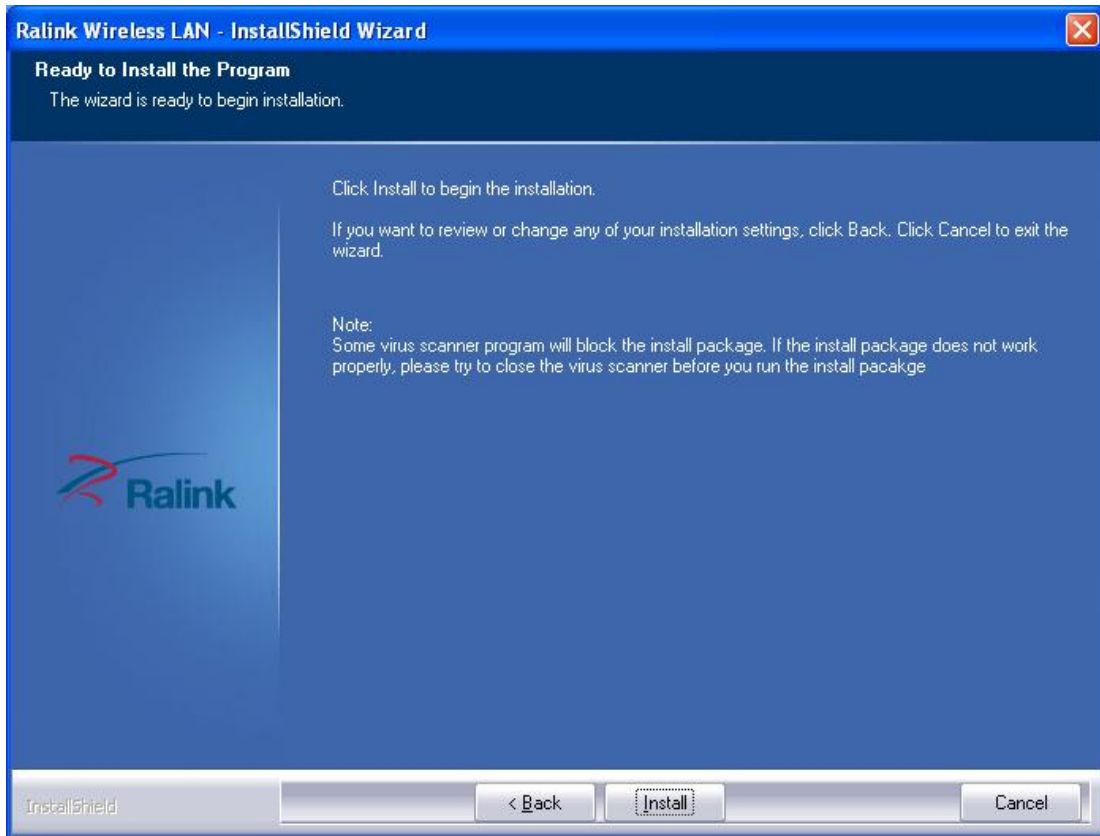
5. Show following window, Click 'Next' to continue.



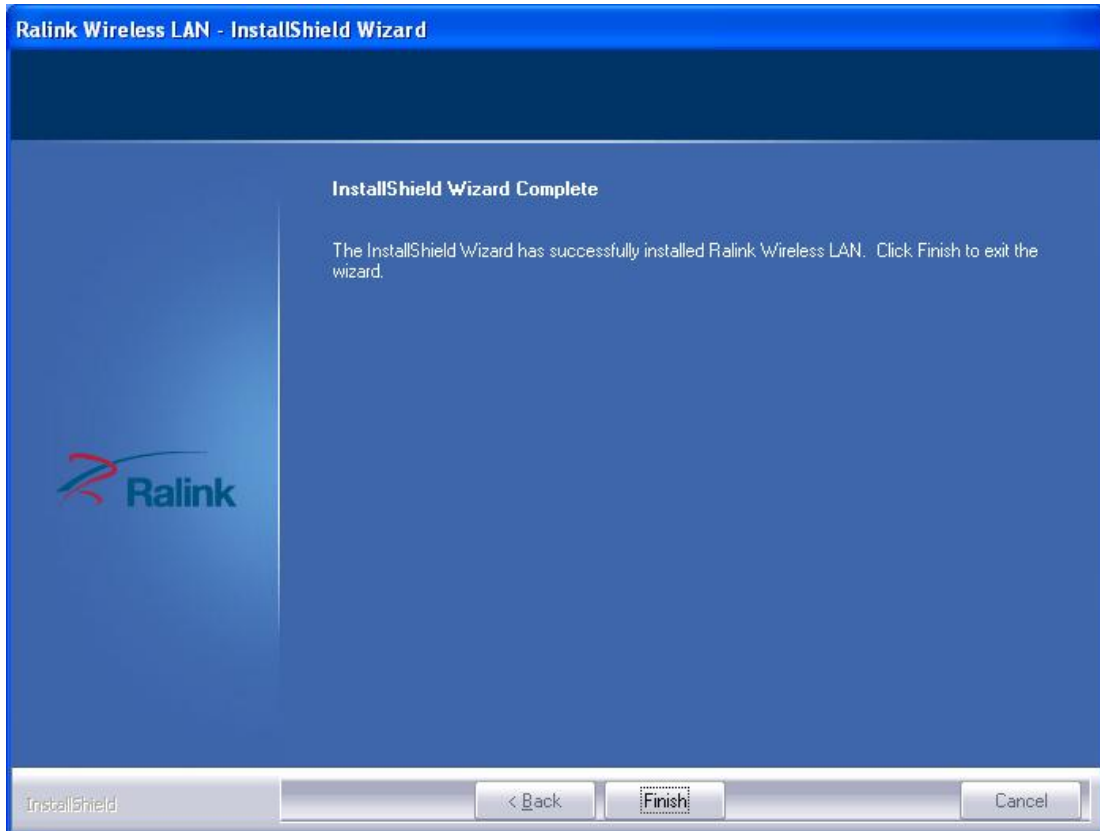
6. Show following window, Click 'Next' to continue.



7. Show following window, Click 'Install' to continue.




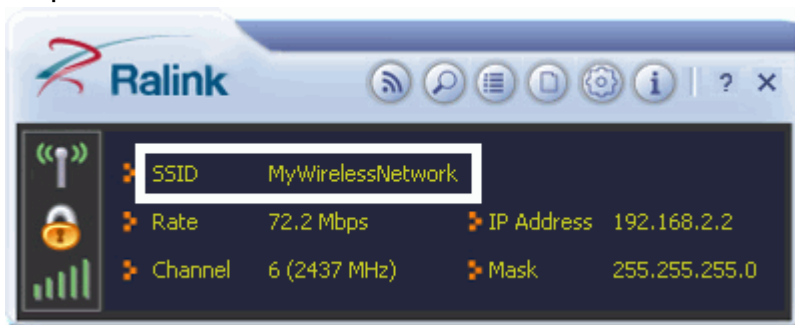
8. Show following window, click 'Finish' to finish the installation.



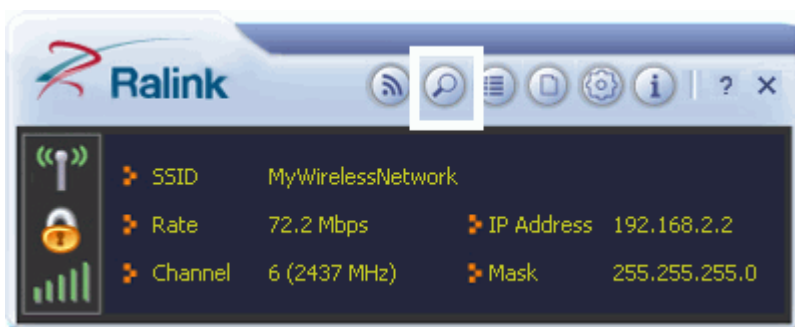
II. Connecting to a Wireless Network

The Utility lets you connect to a wireless network, hotspot, access point (AP), or wireless router, and even lets you connect to the Internet. Follow the steps below to connect to a wireless network using the Utility.


1. Open the Utility by double-clicking on the Utility icon  in the taskbar in the bottom right corner of your screen.
2. The Utility appears, by default connected to an available open wireless network. Check the name of the network to which you are connected. If this is the correct network, no further steps are required.

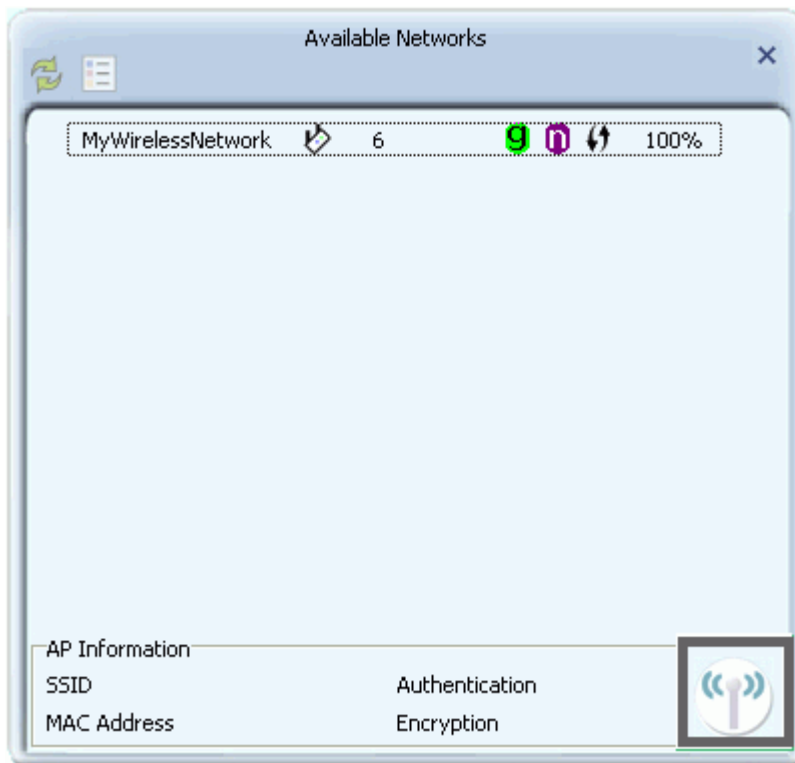


3. To connect to an alternative network, click the Available Networks button.



4. In the Available Networks window that appears, select the name of the network to which you are connecting. Then click the connect

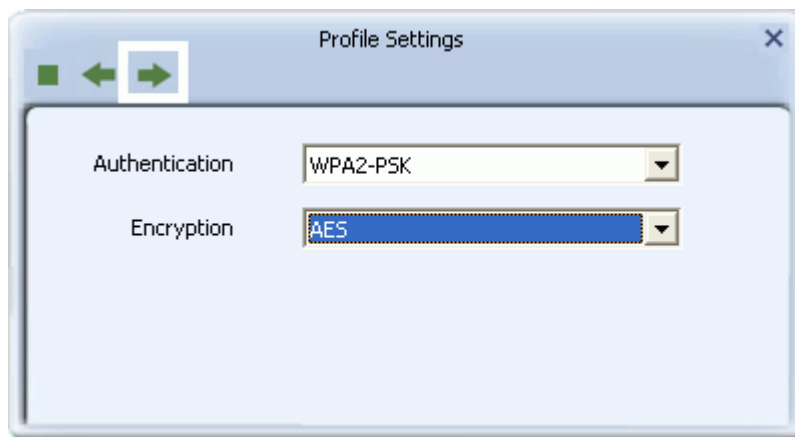
icon  and wait several seconds while the Utility sets up a connection.



5. The Utility automatically detects and displays the security settings of the network to which you are connecting in the Profile Settings screens.

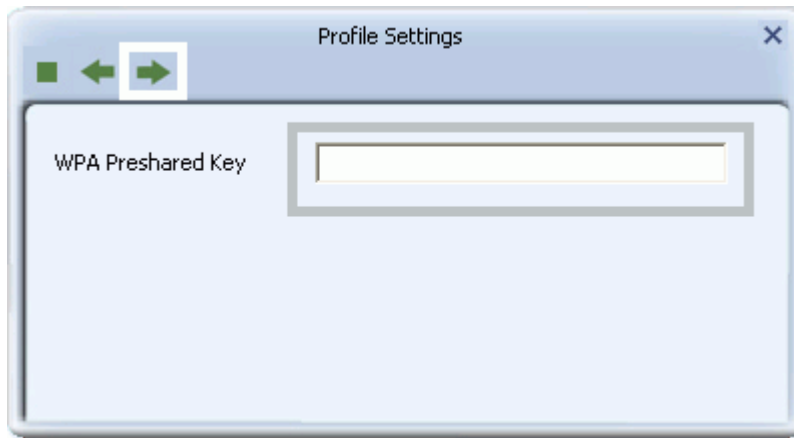
WPA-PSK or WPA2-PSK

- A. If the Utility shows that WPA-PSK or WPA2-PSK security is detected, click the right arrow to save your settings.



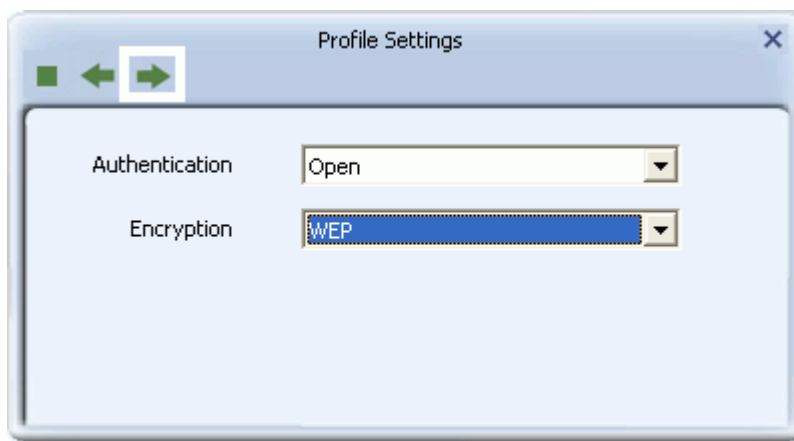
- B. In the screen that displays, in the 'WPA Preshared Key' field, type a security key, the same as that used by the AP or wireless

router to which you are connecting. Click the right arrow to save your settings and connect to the network.

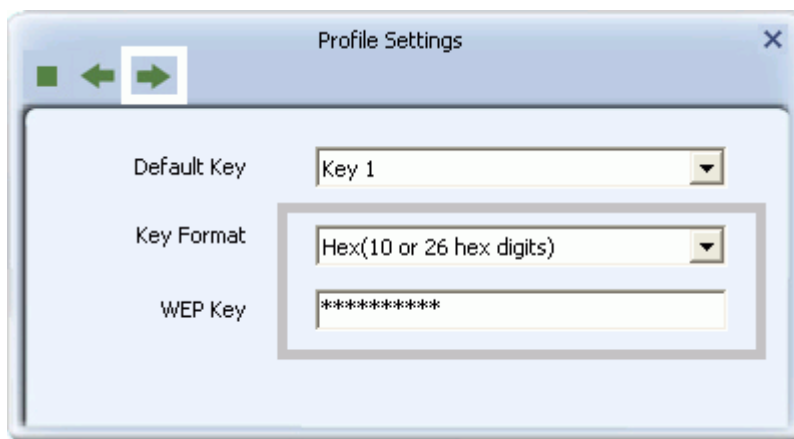


WEP

A. If the Utility shows that WEP security is detected, click the right arrow to save your settings.

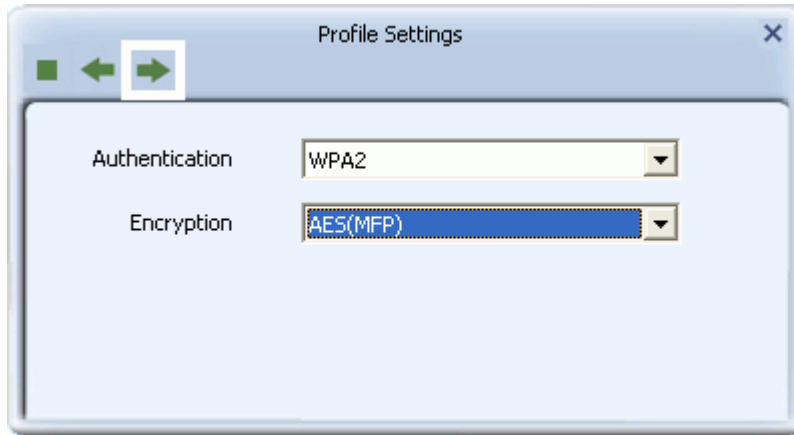


B. In the 'WEP Key' field, type the same WEP key as that configured on the AP or wireless router to which you are connecting, and ensure that 'Default Tx Key' and 'Key Format' settings are also the same. Click the right arrow to save your settings and connect to the network.

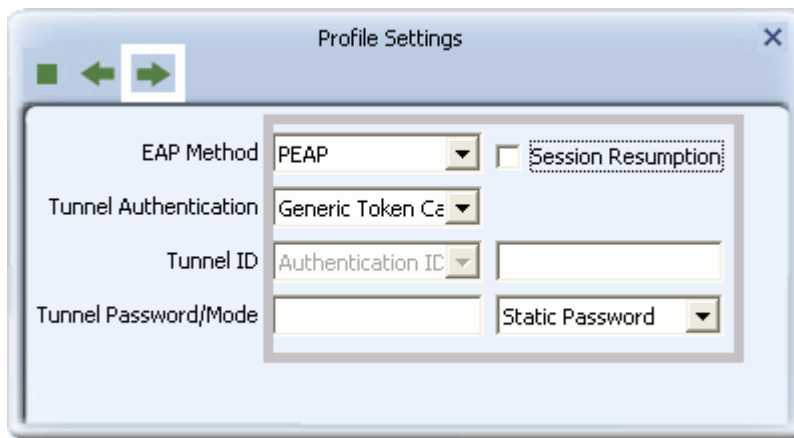


802.1X, WPA, or WPA2

- A. If the Utility shows that 802.1x, WPA, or WPA2 security is detected, click the right arrow to save your settings.

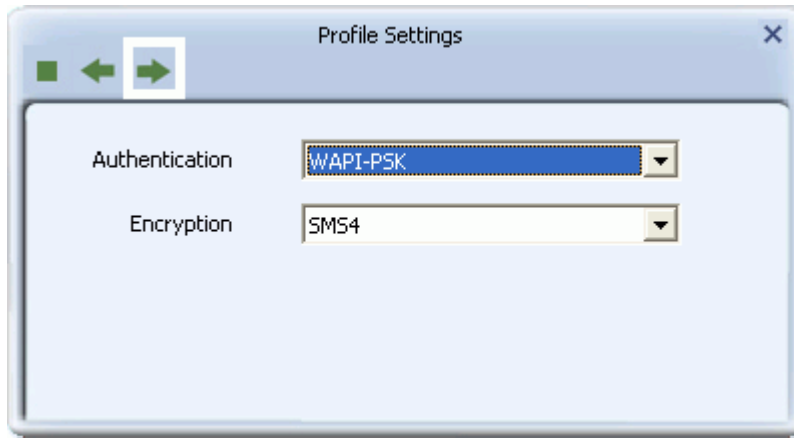


- B. Select the EAP Method (Extensible Authentication Protocol) and Tunnel Authentication method, and if required, the Tunnel ID method and Tunnel Mode, and enter the user name and password, using the settings provided by your organization's network administrator. Click the right arrow to save your settings.

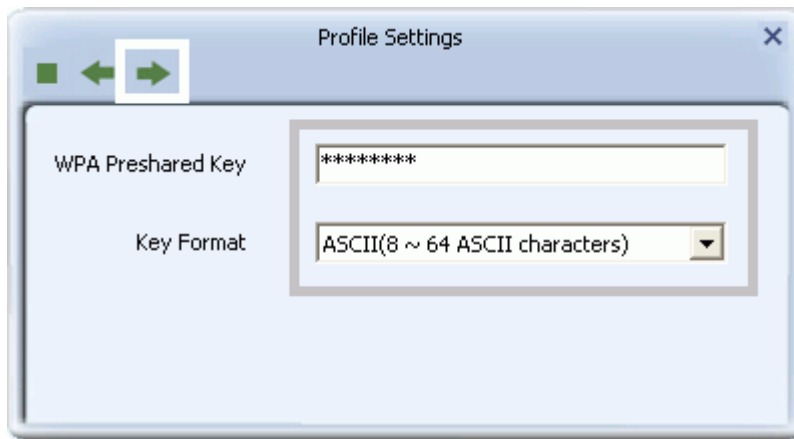


WAPI-PSK

- A. If the Utility shows that WAPI-PSK security is detected, click the right arrow to save your settings.

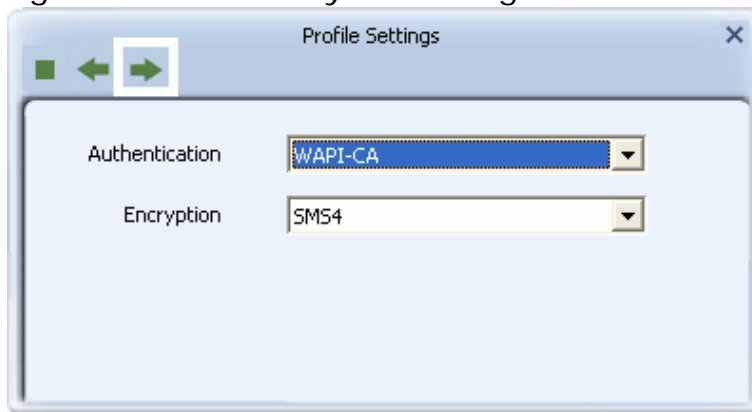


- B.** In the 'WPA Preshared Key' field, type a security key, and select a Key Format setting, the same as that used by the AP or wireless router to which you are connecting. Click the right arrow to save your settings and connect to the network.



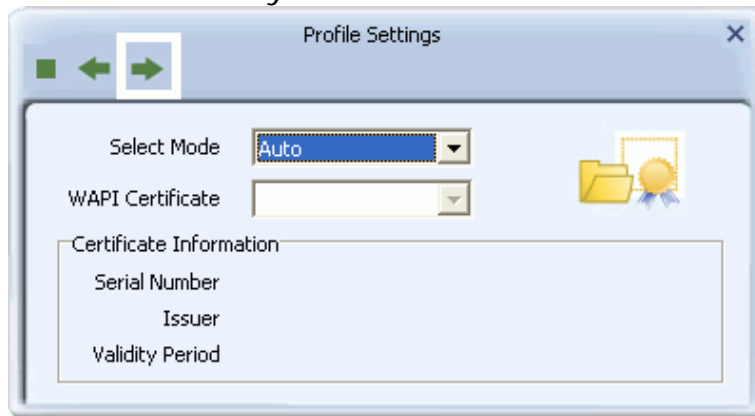
WAPI-CA

- A.** If the Utility shows that WAPI-CA security is detected, click the right arrow to save your settings.



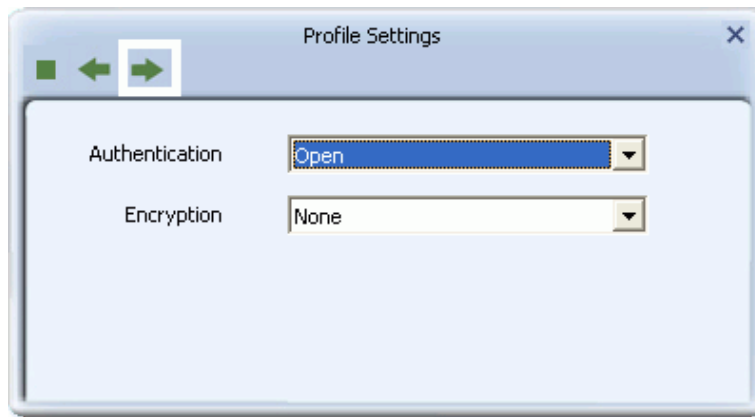
- B.** If you have a WAPI certificate already installed, in the Select Mode field, select Auto and click the right arrow to save your settings and connect to the network. Otherwise, if there is no WAPI certificate in your system, go to Setting Up Enterprise

Wireless Security.

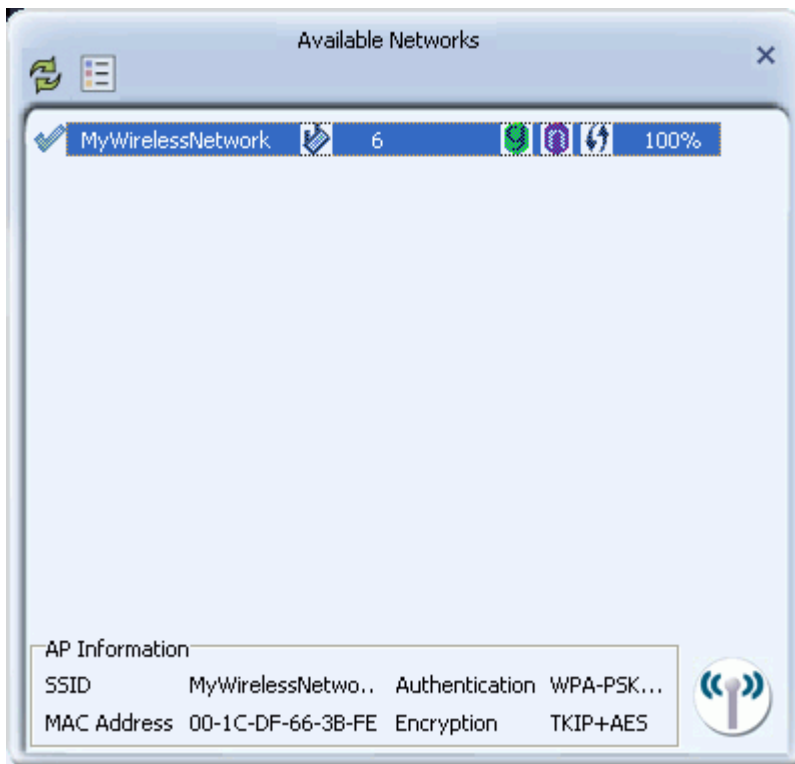


No Security

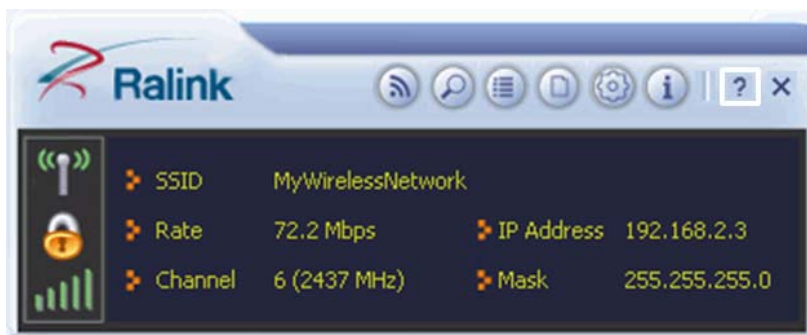
If your network has no security (not recommended), no further settings are required. Click the right arrow to save your settings and connect to the network



6. Once you are connected the Available Networks screen shows the status of your connection.



7. For more settings help, click  view.



FCC WARNING

This device complies with Part 15 of the FCC Rules. Operation is subject to the following two conditions:

- (1) this device may not cause harmful interference, and
- (2) this device must accept any interference received, including interference that may cause undesired operation.

NOTE 1: This equipment has been tested and found to comply with the limits for a Class B digital device, pursuant to part 15 of the FCC Rules. These limits are designed to provide reasonable protection against harmful interference in a residential installation. This equipment generates, uses and can radiate radio frequency energy and, if not installed and used in accordance with the instructions, may cause harmful interference to radio communications. However, there is no guarantee that interference will not occur in a particular installation. If this equipment does cause harmful interference to radio or television reception, which can be determined by turning the equipment off and on, the user is encouraged to try to correct the interference by one or more of the following measures:

- Reorient or relocate the receiving antenna.
- Increase the separation between the equipment and receiver.
- Connect the equipment into an outlet on a circuit different from that to which the receiver is connected.
- Consult the dealer or an experienced radio/TV technician for help.

NOTE 2: The manufacturer is not responsible for any changes or modifications not expressly approved by the manufacturer for compliance, such modifications could void the user's authority to operate the equipment.

IC WARNING

This device complies with RSS-Gen of the IC Rules. Operation is subject to the following two conditions:

- (1) this device may not cause harmful interference, and
- (2) this device must accept any interference received, including interference that may cause undesired operation.

Under Industry Canada regulations, this radio transmitter may only operate using an antenna of a PCB and maximum -2 dBi gain approved for the transmitter by Industry Canada. To reduce potential radio interference to other users, the antenna type and its gain should be so chosen that the equivalent isotropically radiated power (e.i.r.p.) is not more than that necessary for successful communication.