

## Test setup photos

-125 kHz-

- 9 kHz ~ 30 MHz

12 V



48 V



**Test setup photos**

Conducted Emission

12 V

- Front

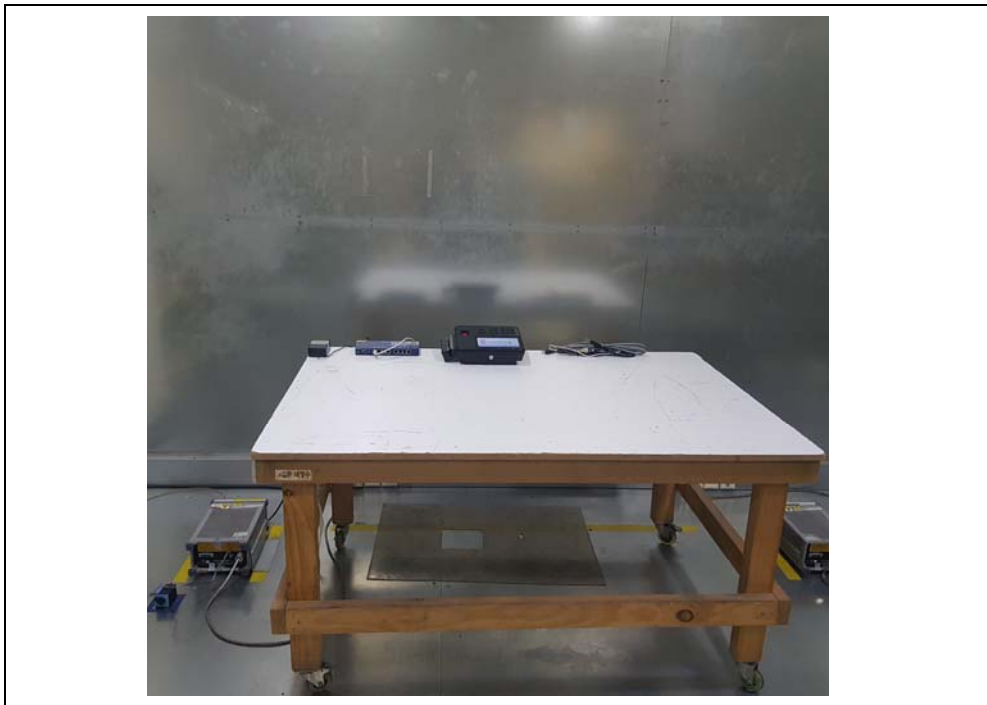


- Rear



**48 V**

- Front



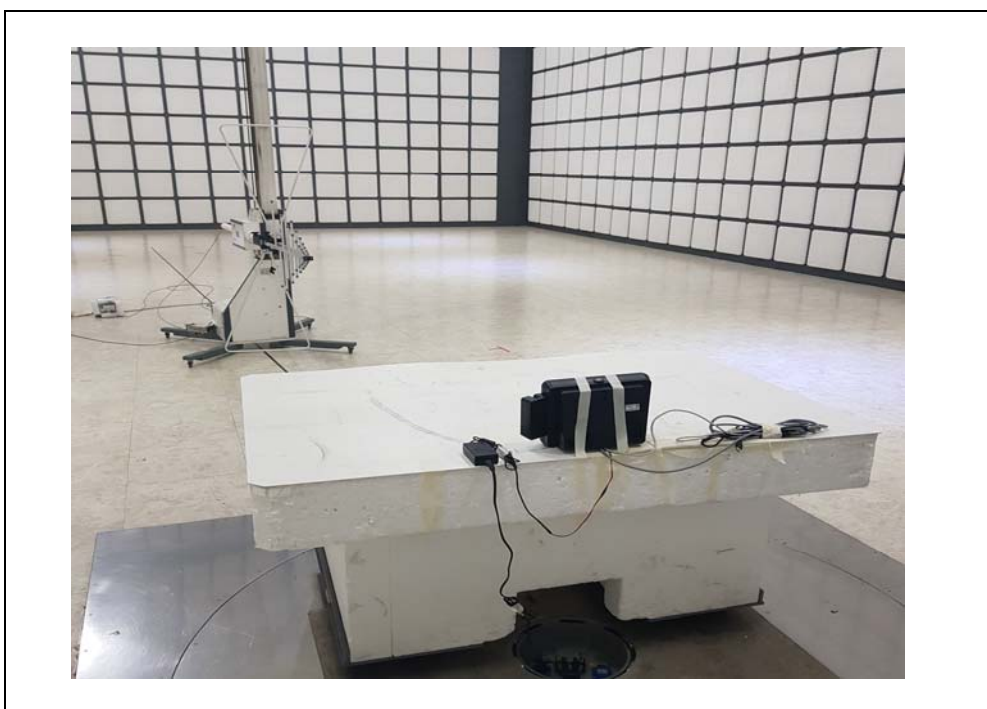
- Rear



**-NFC-**  
**12 V**  
- 9 kHz ~ 30 MHz



- 30 MHz ~ 1 GHz



**48 V**  
- 9 kHz ~ 30 MHz

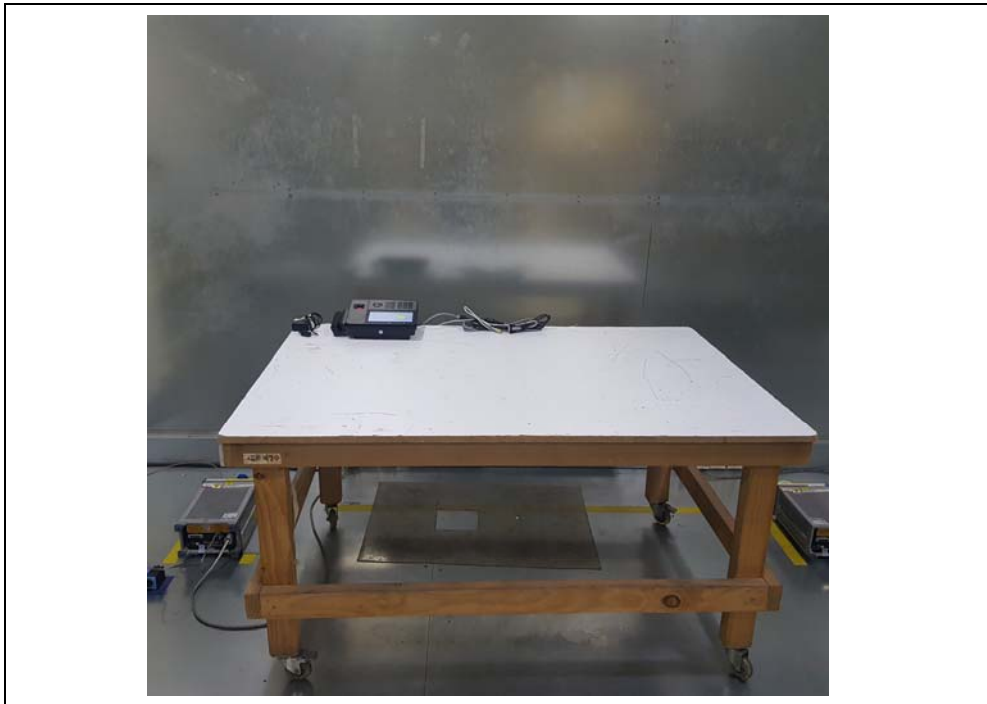


- 30 MHz ~ 1 GHz



**Conducted Emission**  
**12 V**

- Front



- Rear



**48 V**

- Front



- Rear



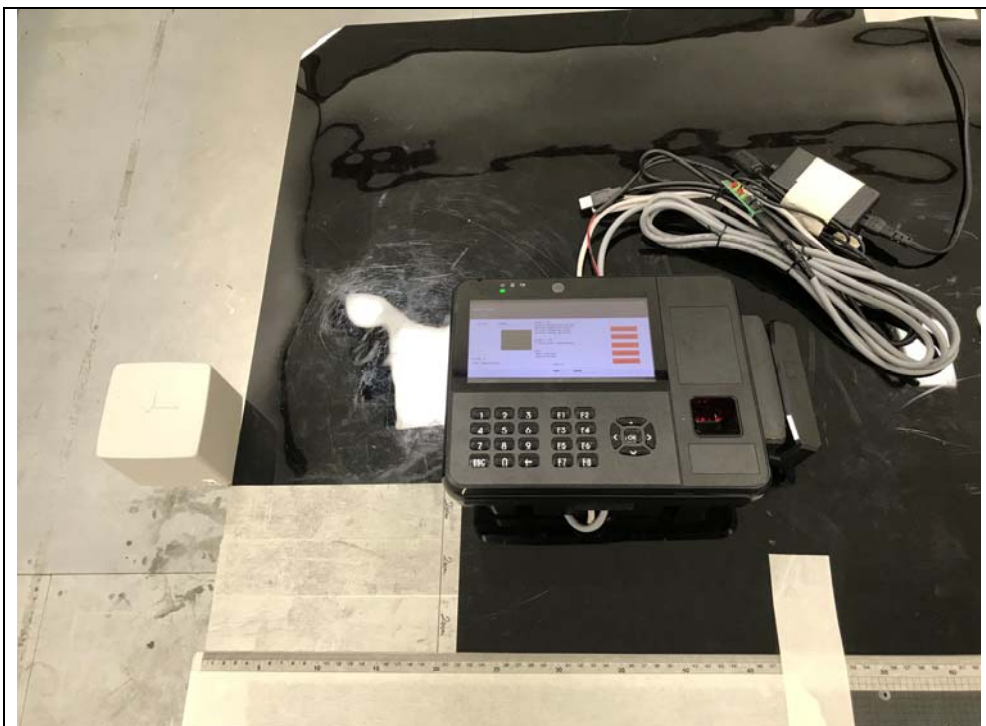
**- Nerve Stimulation -**

**12 V**

**- A (Right)**

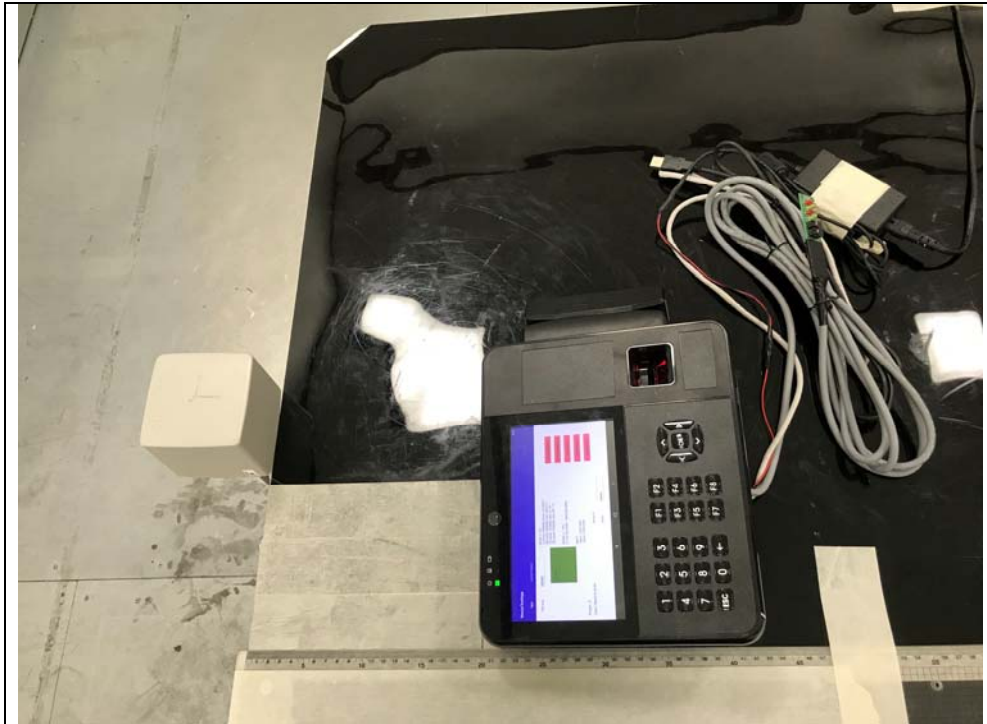


**- B (Left)**





- C (Rear)



- D (Front)



- E (Top)



- F (Bottom)



**48 V**

- A (Right)



- B (Left)



- C (Rear)



- D (Front)



- E (Top)



- F (Bottom)

