

Approval Paper

Internal Antenna

Manufacturer: KYOCERA AVX COMPONENTS INCHEON

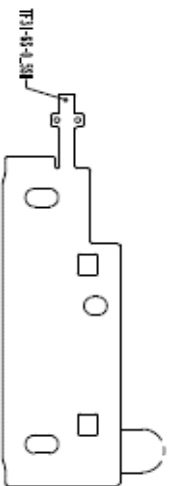
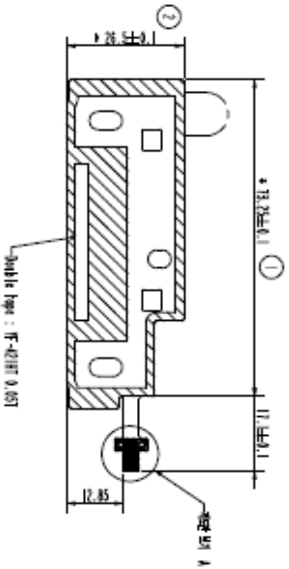
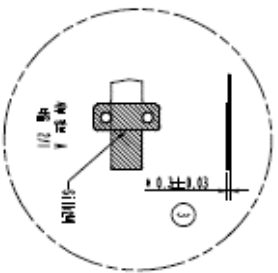
MODEL: BS3 HF_ANT_PS

PART No: MF740M-13F-R02

page2 ----- Specification

Drawing & Picture

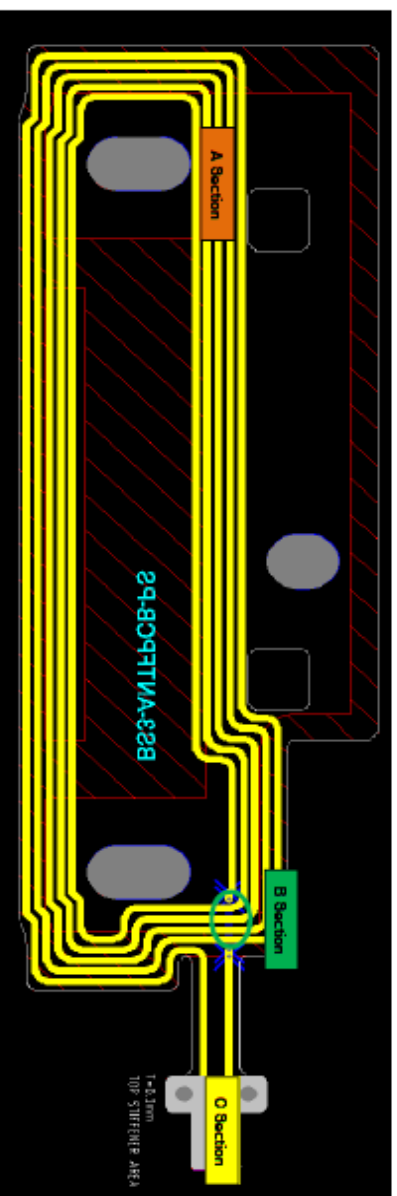
DIMENSIONS - SIZE AND UNIT SYSTEM			
NO.	NAME	DESCRIPTION	UNIT
1		17x11x10mm	mm



TOLERANCE			
0.00-0.05	0.05	0.10	0.15
0.05-0.10	0.10	0.15	0.20
0.10-0.15	0.15	0.20	0.25
0.15-0.20	0.20	0.25	0.30
0.20-0.25	0.25	0.30	0.35
0.25-0.30	0.30	0.35	0.40
0.30-0.35	0.35	0.40	0.45
0.35-0.40	0.40	0.45	0.50
0.40-0.45	0.45	0.50	0.55
0.45-0.50	0.50	0.55	0.60
0.50-0.55	0.55	0.60	0.65
0.55-0.60	0.60	0.65	0.70
0.60-0.65	0.65	0.70	0.75
0.65-0.70	0.70	0.75	0.80
0.70-0.75	0.75	0.80	0.85
0.75-0.80	0.80	0.85	0.90
0.80-0.85	0.85	0.90	0.95
0.85-0.90	0.90	0.95	1.00
0.90-0.95	0.95	1.00	1.05
0.95-1.00	1.00	1.05	1.10
1.00-1.05	1.05	1.10	1.15
1.05-1.10	1.10	1.15	1.20
1.10-1.15	1.15	1.20	1.25
1.15-1.20	1.20	1.25	1.30
1.20-1.25	1.25	1.30	1.35
1.25-1.30	1.30	1.35	1.40
1.30-1.35	1.35	1.40	1.45
1.35-1.40	1.40	1.45	1.50
1.40-1.45	1.45	1.50	1.55
1.45-1.50	1.50	1.55	1.60
1.50-1.55	1.55	1.60	1.65
1.55-1.60	1.60	1.65	1.70
1.60-1.65	1.65	1.70	1.75
1.65-1.70	1.70	1.75	1.80
1.70-1.75	1.75	1.80	1.85
1.75-1.80	1.80	1.85	1.90
1.80-1.85	1.85	1.90	1.95
1.85-1.90	1.90	1.95	2.00
1.90-1.95	1.95	2.00	2.05
1.95-2.00	2.00	2.05	2.10
2.00-2.05	2.05	2.10	2.15
2.05-2.10	2.10	2.15	2.20
2.10-2.15	2.15	2.20	2.25
2.15-2.20	2.20	2.25	2.30
2.20-2.25	2.25	2.30	2.35
2.25-2.30	2.30	2.35	2.40
2.30-2.35	2.35	2.40	2.45
2.35-2.40	2.40	2.45	2.50
2.40-2.45	2.45	2.50	2.55
2.45-2.50	2.50	2.55	2.60
2.50-2.55	2.55	2.60	2.65
2.55-2.60	2.60	2.65	2.70
2.60-2.65	2.65	2.70	2.75
2.65-2.70	2.70	2.75	2.80
2.70-2.75	2.75	2.80	2.85
2.75-2.80	2.80	2.85	2.90
2.80-2.85	2.85	2.90	2.95
2.85-2.90	2.90	2.95	3.00
2.90-2.95	2.95	3.00	3.05
2.95-3.00	3.00	3.05	3.10
3.00-3.05	3.05	3.10	3.15
3.05-3.10	3.10	3.15	3.20
3.10-3.15	3.15	3.20	3.25
3.15-3.20	3.20	3.25	3.30
3.20-3.25	3.25	3.30	3.35
3.25-3.30	3.30	3.35	3.40
3.30-3.35	3.35	3.40	3.45
3.35-3.40	3.40	3.45	3.50
3.40-3.45	3.45	3.50	3.55
3.45-3.50	3.50	3.55	3.60
3.50-3.55	3.55	3.60	3.65
3.55-3.60	3.60	3.65	3.70
3.60-3.65	3.65	3.70	3.75
3.65-3.70	3.70	3.75	3.80
3.70-3.75	3.75	3.80	3.85
3.75-3.80	3.80	3.85	3.90
3.80-3.85	3.85	3.90	3.95
3.85-3.90	3.90	3.95	4.00
3.90-3.95	3.95	4.00	4.05
3.95-4.00	4.00	4.05	4.10
4.00-4.05	4.05	4.10	4.15
4.05-4.10	4.10	4.15	4.20
4.10-4.15	4.15	4.20	4.25
4.15-4.20	4.20	4.25	4.30
4.20-4.25	4.25	4.30	4.35
4.25-4.30	4.30	4.35	4.40
4.30-4.35	4.35	4.40	4.45
4.35-4.40	4.40	4.45	4.50
4.40-4.45	4.45	4.50	4.55
4.45-4.50	4.50	4.55	4.60
4.50-4.55	4.55	4.60	4.65
4.55-4.60	4.60	4.65	4.70
4.60-4.65	4.65	4.70	4.75
4.65-4.70	4.70	4.75	4.80
4.70-4.75	4.75	4.80	4.85
4.75-4.80	4.80	4.85	4.90
4.80-4.85	4.85	4.90	4.95
4.85-4.90	4.90	4.95	5.00
4.90-4.95	4.95	5.00	5.05
4.95-5.00	5.00	5.05	5.10
5.00-5.05	5.05	5.10	5.15
5.05-5.10	5.10	5.15	5.20
5.10-5.15	5.15	5.20	5.25
5.15-5.20	5.20	5.25	5.30
5.20-5.25	5.25	5.30	5.35
5.25-5.30	5.30	5.35	5.40
5.30-5.35	5.35	5.40	5.45
5.35-5.40	5.40	5.45	5.50
5.40-5.45	5.45	5.50	5.55
5.45-5.50	5.50	5.55	5.60
5.50-5.55	5.55	5.60	5.65
5.55-5.60	5.60	5.65	5.70
5.60-5.65	5.65	5.70	5.75
5.65-5.70	5.70	5.75	5.80
5.70-5.75	5.75	5.80	5.85
5.75-5.80	5.80	5.85	5.90
5.80-5.85	5.85	5.90	5.95
5.85-5.90	5.90	5.95	6.00
5.90-5.95	5.95	6.00	6.05
5.95-6.00	6.00	6.05	6.10
6.00-6.05	6.05	6.10	6.15
6.05-6.10	6.10	6.15	6.20
6.10-6.15	6.15	6.20	6.25
6.15-6.20	6.20	6.25	6.30
6.20-6.25	6.25	6.30	6.35
6.25-6.30	6.30	6.35	6.40
6.30-6.35	6.35	6.40	6.45
6.35-6.40	6.40	6.45	6.50
6.40-6.45	6.45	6.50	6.55
6.45-6.50	6.50	6.55	6.60
6.50-6.55	6.55	6.60	6.65
6.55-6.60	6.60	6.65	6.70
6.60-6.65	6.65	6.70	6.75
6.65-6.70	6.70	6.75	6.80
6.70-6.75	6.75	6.80	6.85
6.75-6.80	6.80	6.85	6.90
6.80-6.85	6.85	6.90	6.95
6.85-6.90	6.90	6.95	7.00
6.90-6.95	6.95	7.00	7.05
6.95-7.00	7.00	7.05	7.10
7.00-7.05	7.05	7.10	7.15
7.05-7.10	7.10	7.15	7.20
7.10-7.15	7.15	7.20	7.25
7.15-7.20	7.20	7.25	7.30
7.20-7.25	7.25	7.30	7.35
7.25-7.30	7.30	7.35	7.40
7.30-7.35	7.35	7.40	7.45
7.35-7.40	7.40	7.45	7.50
7.40-7.45	7.45	7.50	7.55
7.45-7.50	7.50	7.55	7.60
7.50-7.55	7.55	7.60	7.65
7.55-7.60	7.60	7.65	7.70
7.60-7.65	7.65	7.70	7.75
7.65-7.70	7.70	7.75	7.80
7.70-7.75	7.75	7.80	7.85
7.75-7.80	7.80	7.85	7.90
7.80-7.85	7.85	7.90	7.95
7.85-7.90	7.90	7.95	8.00
7.90-7.95	7.95	8.00	8.05
7.95-8.00	8.00	8.05	8.10
8.00-8.05	8.05	8.10	8.15
8.05-8.10	8.10	8.15	8.20
8.10-8.15	8.15	8.20	8.25
8.15-8.20	8.20	8.25	8.30
8.20-8.25	8.25	8.30	8.35
8.25-8.30	8.30	8.35	8.40
8.30-8.35	8.35	8.40	8.45
8.35-8.40	8.40	8.45	8.50
8.40-8.45	8.45	8.50	8.55
8.45-8.50	8.50	8.55	8.60
8.50-8.55	8.55	8.60	8.65
8.55-8.60	8.60	8.65	8.70
8.60-8.65	8.65	8.70	8.75
8.65-8.70	8.70	8.75	8.80
8.70-8.75	8.75	8.80	8.85
8.75-8.80	8.80	8.85	8.90
8.80-8.85	8.85	8.90	8.95
8.85-8.90	8.90	8.95	9.00
8.90-8.95	8.95	9.00	9.05
8.95-9.00	9.00	9.05	9.10
9.00-9.05	9.05	9.10	9.15
9.05-9.10	9.10	9.15	9.20
9.10-9.15	9.15	9.20	9.25
9.15-9.20	9.20	9.25	9.30
9.20-9.25	9.25	9.30	9.35
9.25-9.30	9.30	9.35	9.40
9.30-9.35	9.35	9.40	9.45
9.35-9.40	9.40	9.45	9.50
9.40-9.45	9.45	9.50	9.55
9.45-9.50	9.50	9.55	9.60
9.50-9.55	9.55	9.60	9.65
9.55-9.60	9.60	9.65	9.70
9.60-9.65	9.65	9.70	9.75
9.65-9.70	9.70	9.75	9.80
9.70-9.75	9.75	9.80	9.85
9.75-9.80	9.80	9.85	9.90
9.80-9.85	9.85	9.90	9.95
9.85-9.90	9.90	9.95	10.00
9.90-9.95	9.95	10.00	10.05
9.95-10.00	10.00	10.05	10.10
10.00-10.05	10.05	10.10	10.15
10.05-10.10	10.10	10.15	10.20
10.10-10.15	10.15	10.20	10.25
10.15-10.20	10.20	10.25	10.30
10.20-10.25	10.25	10.30	10.35
10.25-10.30	10.30	10.35	10.40
10.30-10.35	10.35	10.40	10.45
10.35-10.40	10.40	10.45	10.50
10.40-10.45	10.45	10.50	10.55
10.45-10.50	10.50	10.55	10.60
10.50-10.55	10.55	10.60	10.65
10.55-10.60	10.60	10.65	10.70
10.60-10.65	10.65	10.70	10.75
10.65-10.70	10.70	10.75	10.80
10.70-10.75	10.75	10.80	10.85
10.75-10.80	10.80	10.85	10.90
10.80-10.85	10.85	10.90	10.95
10.85-10.90	10.90	10.95	11.00
10.90-10.95	10.95	11.00	11.05
10.95-11.00	11.00	11.05	11.10
11.00-11.05	11.05	11.10	11.15
11.05-11.10	11.10	11.15	11.20
11.10-11.15	11.15	11.20	11.25
11.15-11.20	11.20	11.25	11.30
11.20-11.25			

F.P.C STRUCTURE (FPCB구조)

Model	BSS HF_ANT_PS	Layer	DS
-------	---------------	-------	----



Layer	Item	Specification	A Section	B Section	O Section	품명	업적명
XXX	PAPER	PAPER		125.0		CP9PE8SC_051207 (WHITE)	오성
XXX	TAPE	Adhesive		50.0		4972 (0.05T)	TESA
XXX	Kapton	Polyimide			125.0	5MIL (ADH 40um) HGCS-C850L	HANWHA
		Adhesive			40.0		
C/S	Coverlay	Polyimide	12.5	12.5	12.5	1/2MIL (ADH 25um) HGCS-A505(LV)	HANWHA
		Adhesive	25.0	25.0	25.0		
		Cu Plate		10.0		Cu Plate	Cu Plate
XXX	FCCL	Copper foil		36.0			
		Adhesive	15.0	15.0	15.0	1MIL 10Z ED 3L 양면 HGLS-D211EV	HANWHA
		Polyimide	25.0	25.0	25.0		
		Adhesive	15.0	15.0	15.0		
S/S	Cu Plate	Copper foil	36.0	36.0	36.0		
		Adhesive	10.0	10.0	10.0	Cu Plate	Cu Plate
		Cu Plate	25.0	25.0		1/2MIL (ADH 25um) HGCS-A505(LV)	HANWHA
		Adhesive	12.5	12.5			
LAYER			1	2	1	SCM-500W(WHITE) 무전해 금도금	서울화학
Total Thickness			176.00	272.00	303.50		표면처리
Tolerance					0.3T±0.03	NC: 3-Tum, Av: MIN 0.03um	

※ PAPER 두께 제외