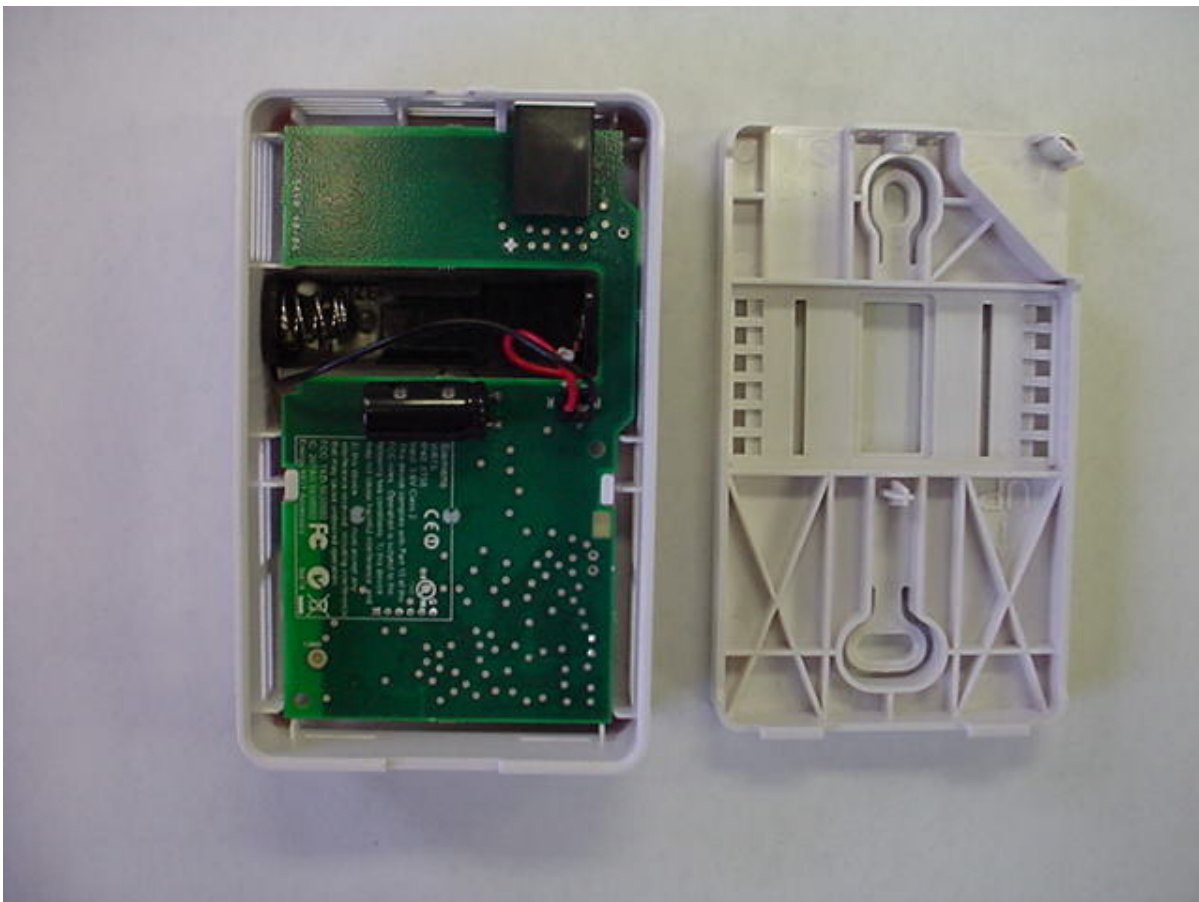


# Siemens Building Technologies, Inc.

## Wireless Room Temperature Sensor

FCC ID#: TKD-5630002

### Photo One – Internal Open for Inspection

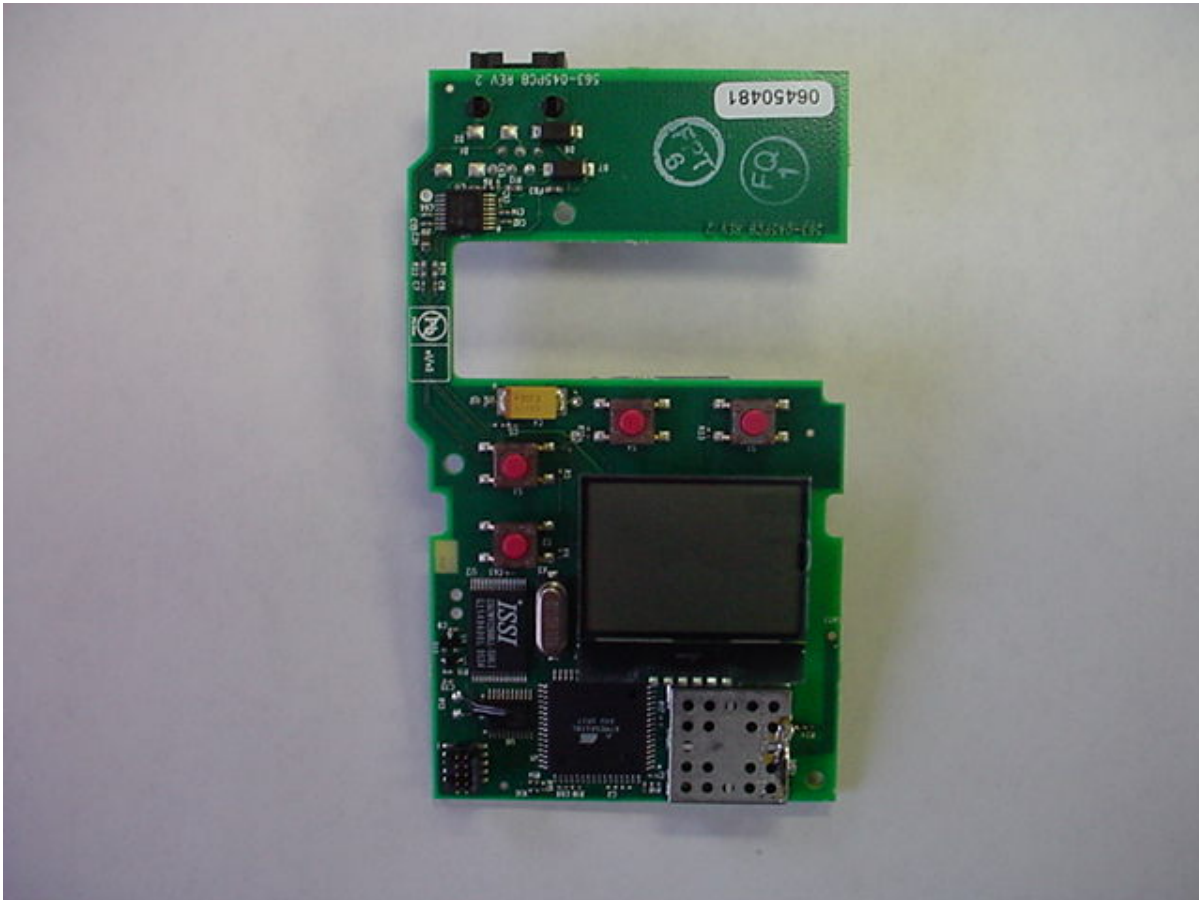


# Siemens Building Technologies, Inc.

## Wireless Room Temperature Sensor

FCC ID#: TKD-5630002

### Photo Two – Internal Printed Circuit Board – Display Side

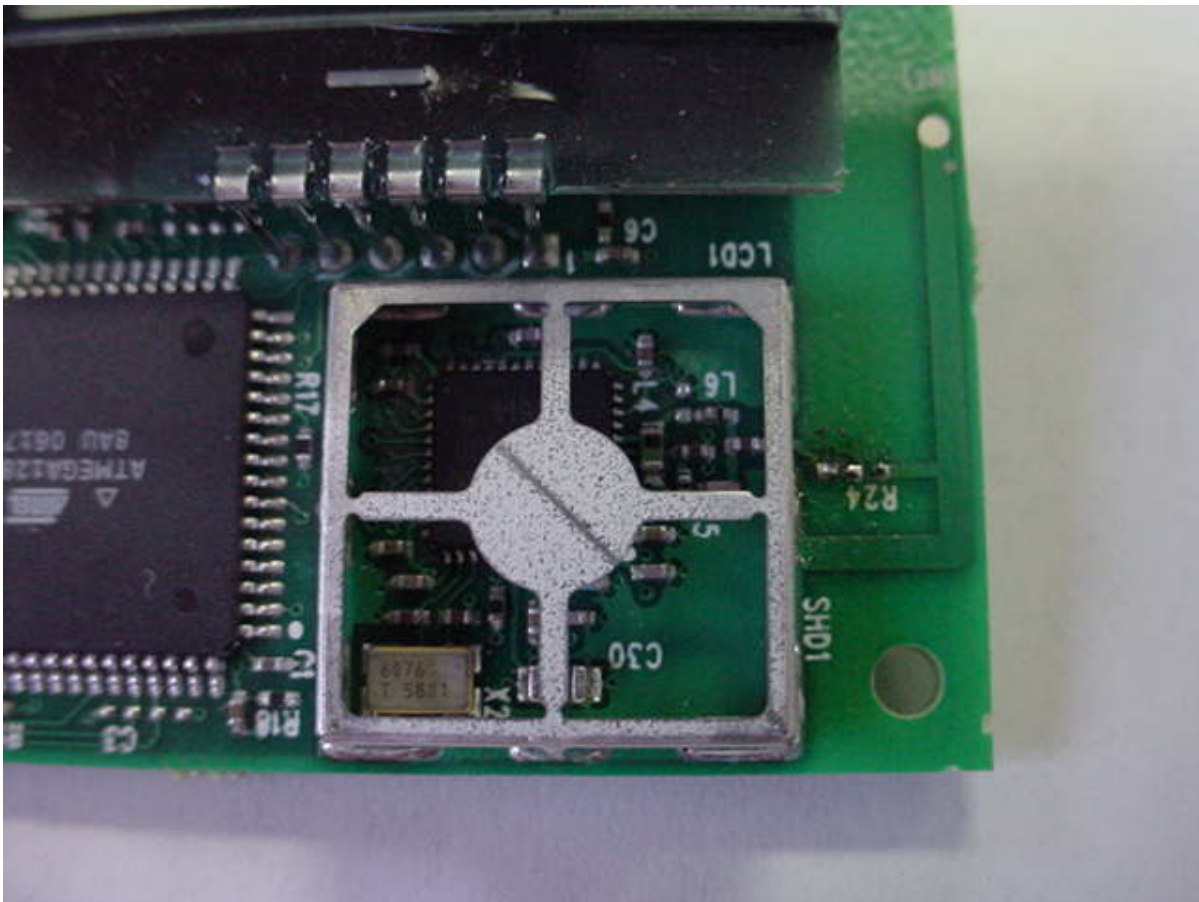


# Siemens Building Technologies, Inc.

## Wireless Room Temperature Sensor

FCC ID#: TKD-5630002

### Photo Three – Internal RF Section – Close-Up

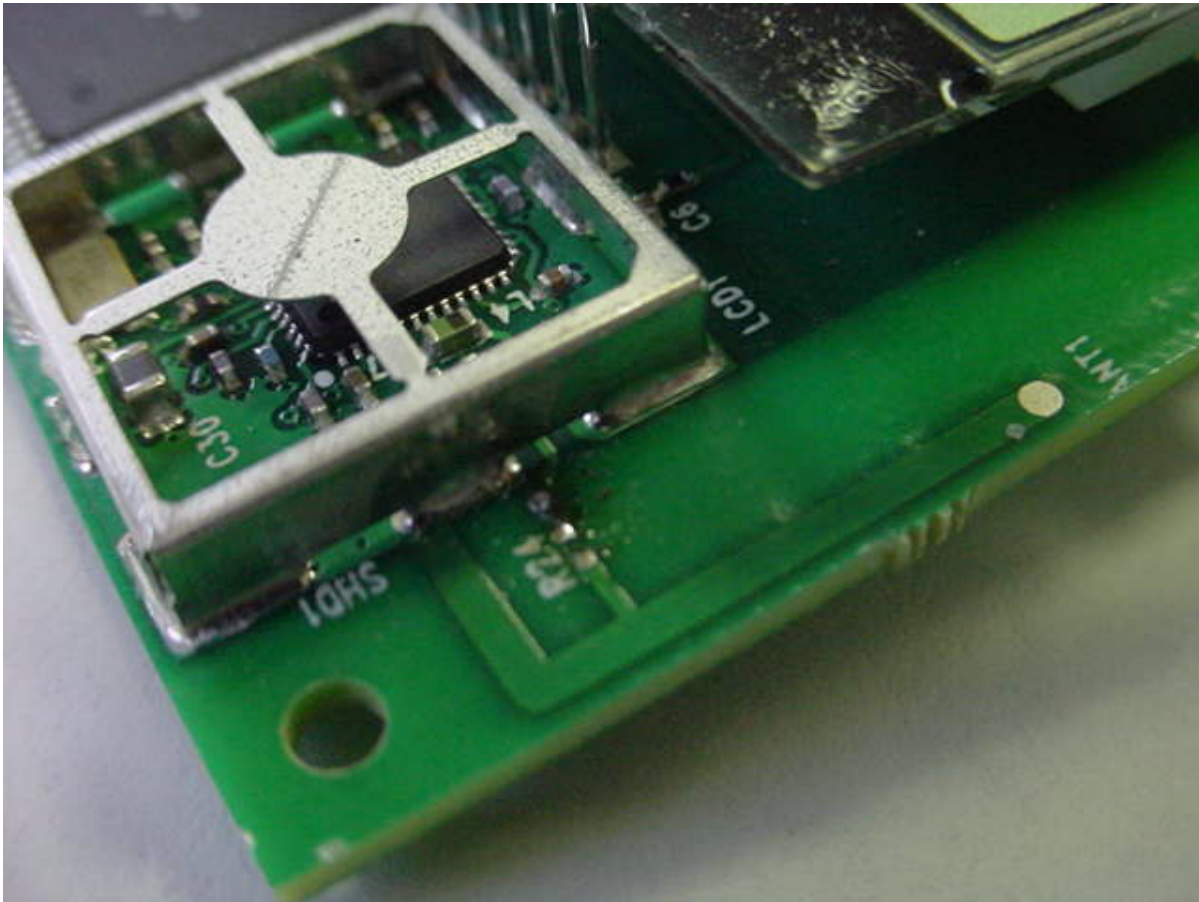


# **Siemens Building Technologies, Inc.**

**Wireless Room Temperature Sensor**

**FCC ID#: TKD-5630002**

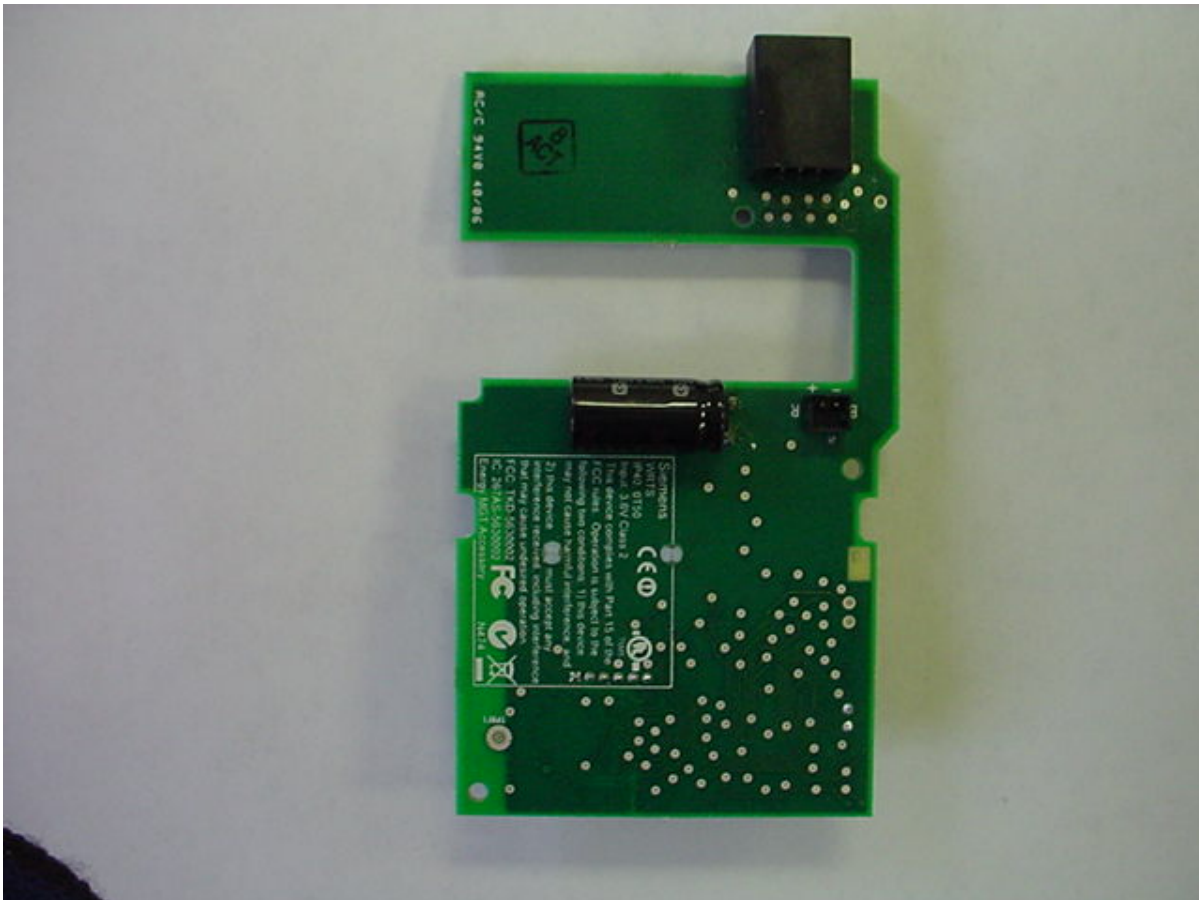
**Photo Four – Internal  
PCB Antenna Close-Up**



# Siemens Building Technologies, Inc.

Wireless Room Temperature Sensor  
FCC ID#: TKD-5630002

Photo Five – Internal  
PCB Flip Side w/FCC ID Label





# Siemens Building Technologies, Inc.

Wireless Room Temperature Sensor  
FCC ID#: TKD-5630002

## Photo Six – Internal FCC ID Label Close-Up



Note: FCC label is silk screened on PCB for following reason: back wallplate is permanently attached to the wall thermostat. PCB is removable and replaceable for service. Outcome: FCC ID # remains with the product.