

This document shows examples of the Type Label.
The Type Label is applied to the housing and to the carton packaging of the router.

Order Code is defined as: **[Family]**-**[Options]**

Please also refer to document:
NB1800_NB1810_Variants_Overview.pdf

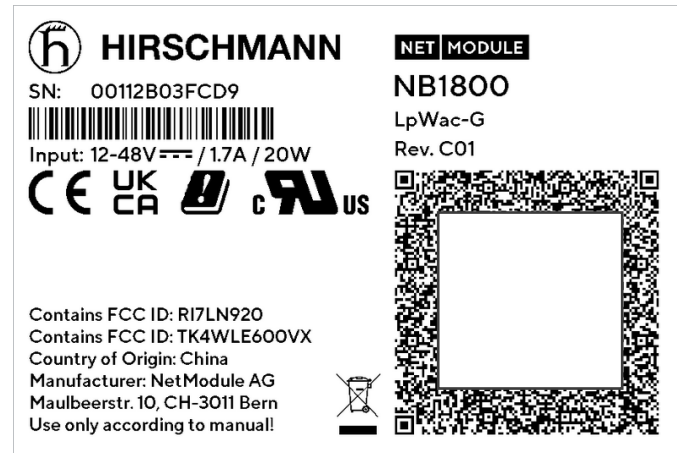
Family

- NB1800 (slim housing)
- NB1810 (wide housing)

Options (order codes by functionality)

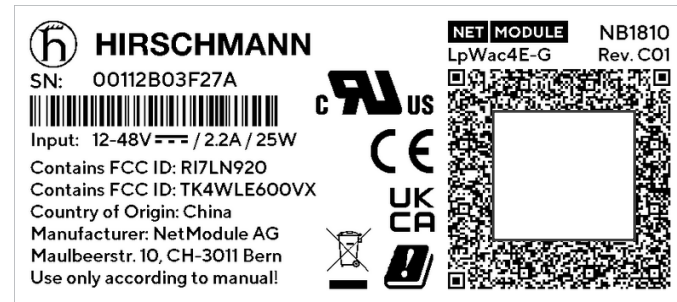
- Lp LTE (Cat. 12)
- Wac WLAN (IEEE 802.11ac)
- 4E 4 additional Ethernet Ports (NB1810 only)
- 4Ep 4 additional Ethernet Ports (NB1810 only) with PoE ports
- G GNSS

NB1800-LpWac-G



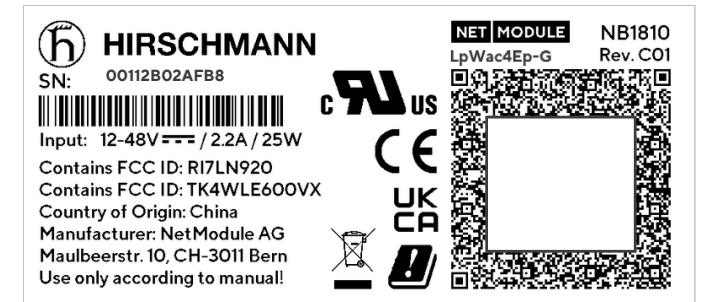
Dimensions Label: 76 x 51 mm
Height Logos (CE, UKCA, cRUus): 5.08 mm

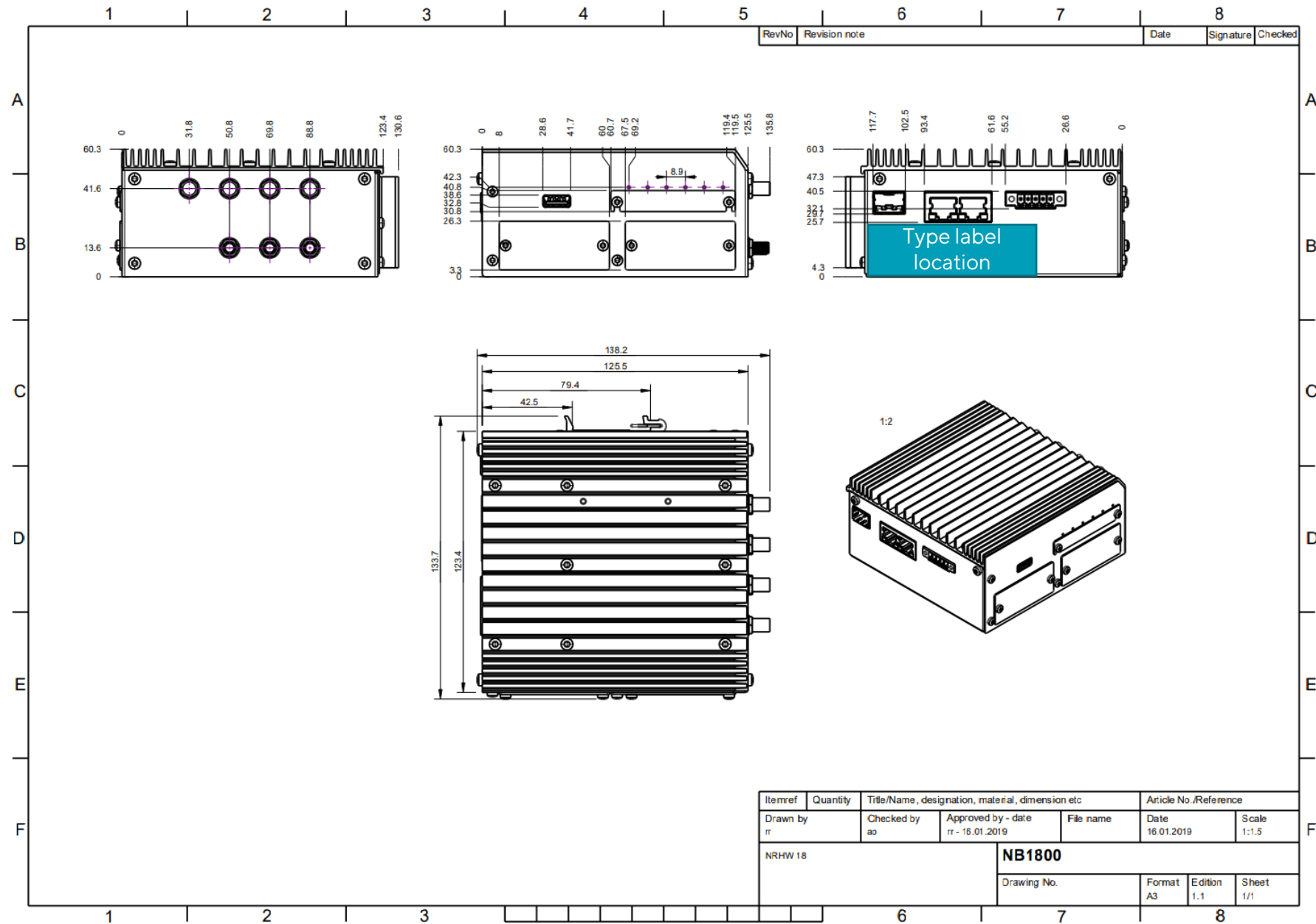
NB1810-LpWac4E-G



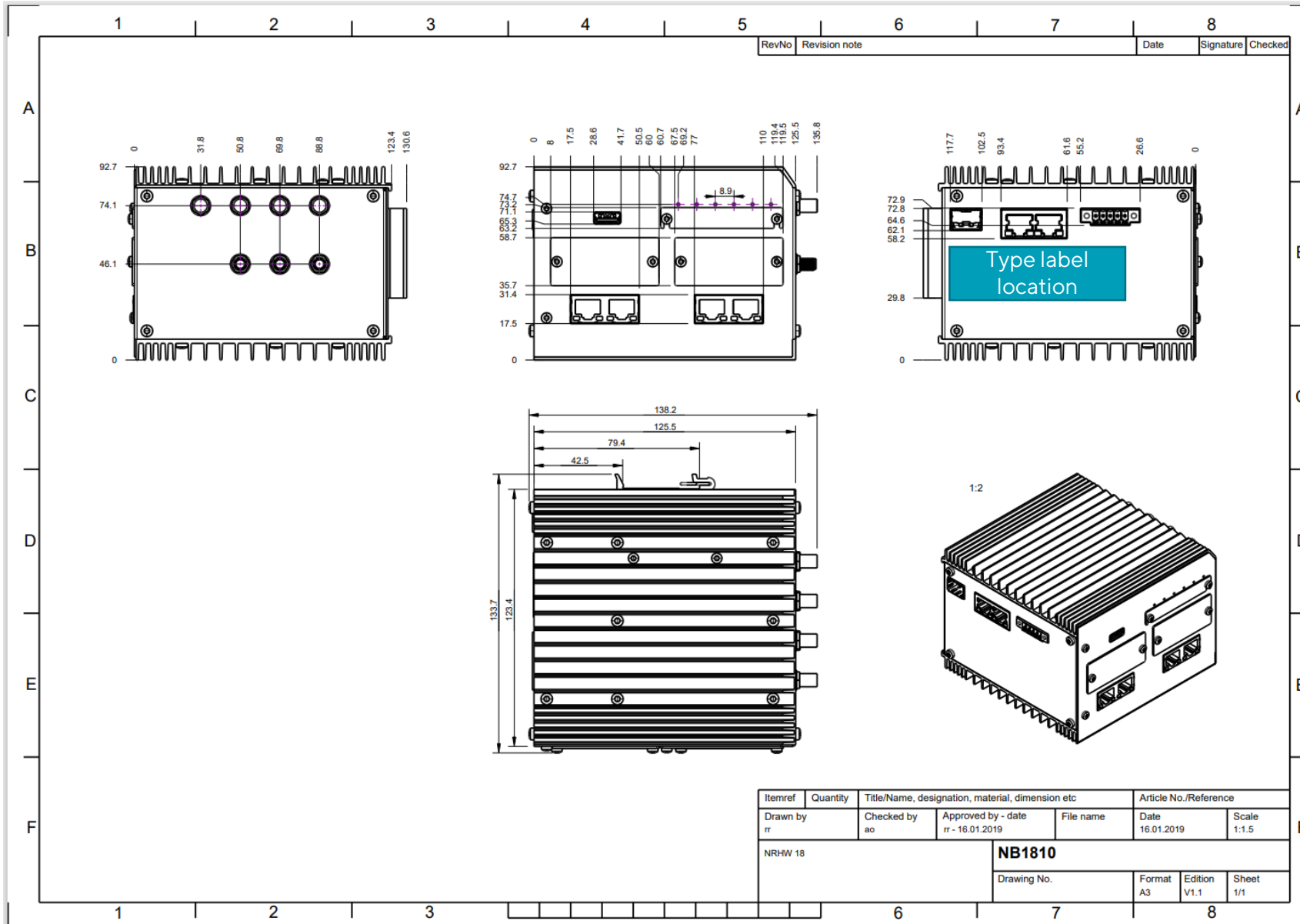
Dimensions Label: 76 x 34 mm
Height Logos (CE, UKCA, cRUus): 5.08 mm

NB1810-LpWac4Ep-G





Itemref	Quantity	Title/Name, designation, material, dimension etc			Article No./Reference	
Drawn by rr	Checked by ao	Approved by - date rr - 16.01.2019	File name	Date 16.01.2019	Scale 1:1.5	
NRHW 18			NB1800			
Drawing No.			Format A3	Edition 1.1	Sheet 1/1	



Itemref	Quantity	Title/Name, designation, material, dimension etc			Article No./Reference	
Drawn by rr	Checked by ao	Approved by - date rr - 16.01.2019	File name	Date 16.01.2019	Scale 1:1.5	
NRHW 18			NB1810			
Drawing No.			Format A3	Edition V1.1	Sheet 1/1	