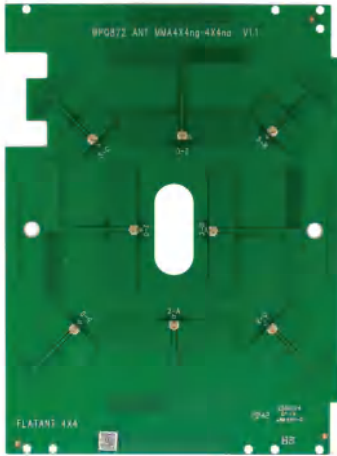


## Flat Antenna for 4x4 MIMO on 2.4GHz and 5GHz



\* main board not included

Model: Flatant-4x4-dualband-6dBi

### KEY FEATURES

- Flat structure
- 8x antenna elements

### APPLICATIONS

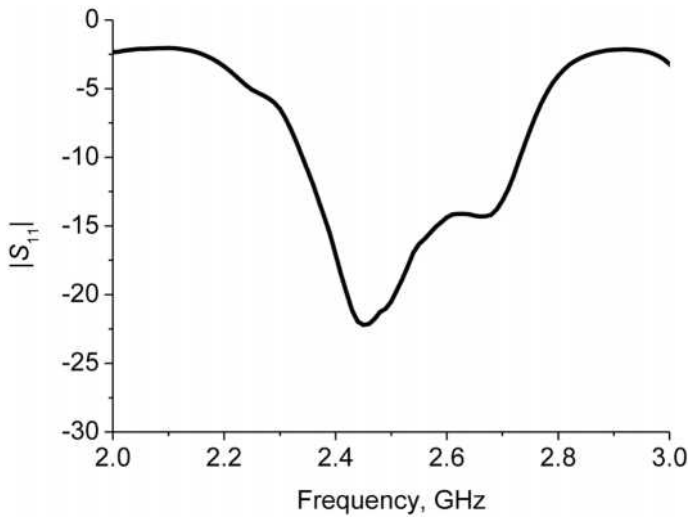
- Indoor high diversity MIMO communications
- Point-to-MultiPoint (PtMP) AP
- Indoor Mesh AP

## Antenna Specifications

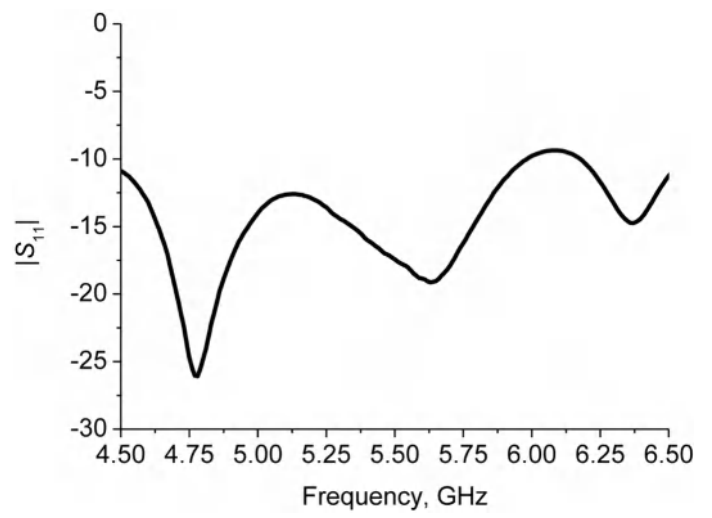
Antenna Elements	4 elements for 2.4 GHz band and 4 elements for 5 GHz band
Size	168 mm x 159 mm
Connectors	8x U.FL antenna connectors
Frequency Range	2.40 ~ 2.48 GHz, 5.18 ~ 5.95 GHz
Gain	5-6 dBi for 2.4 GHz band and 6-7 dBi for 5 GHz band
Radiation	4-Directional, Omnidirectional when combined in azimuth plane
Polarization	Horizontal polarization in each direction if antenna plane is facing upwards
Isolation	> 30 dB for 2.4 GHz band and > 35 dB for 5 GHz band
VSWR	< 2.0:1
Input Impedence	50 ohm

## Antenna S-Parameters

Return Loss

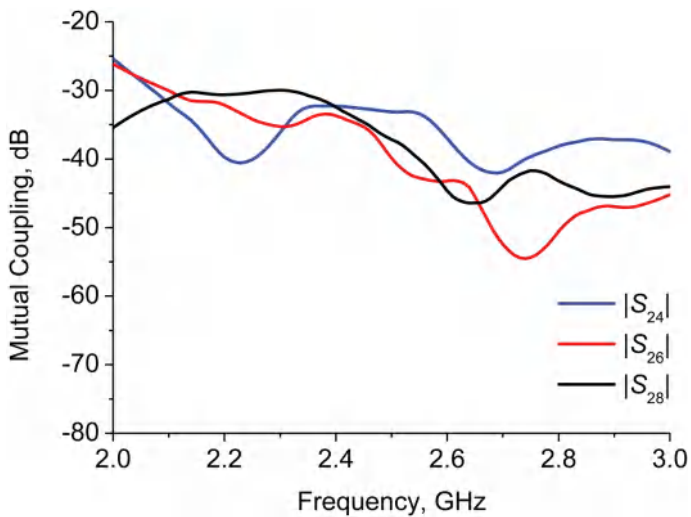


At 2.4 GHz

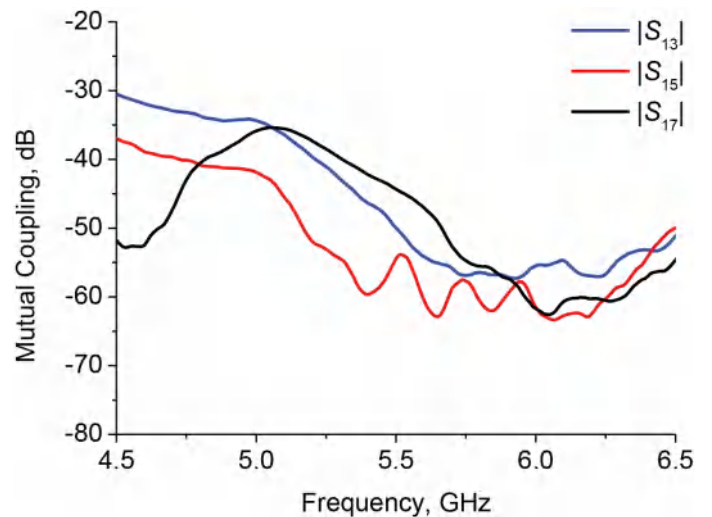


At 5 GHz

Mutual Coupling



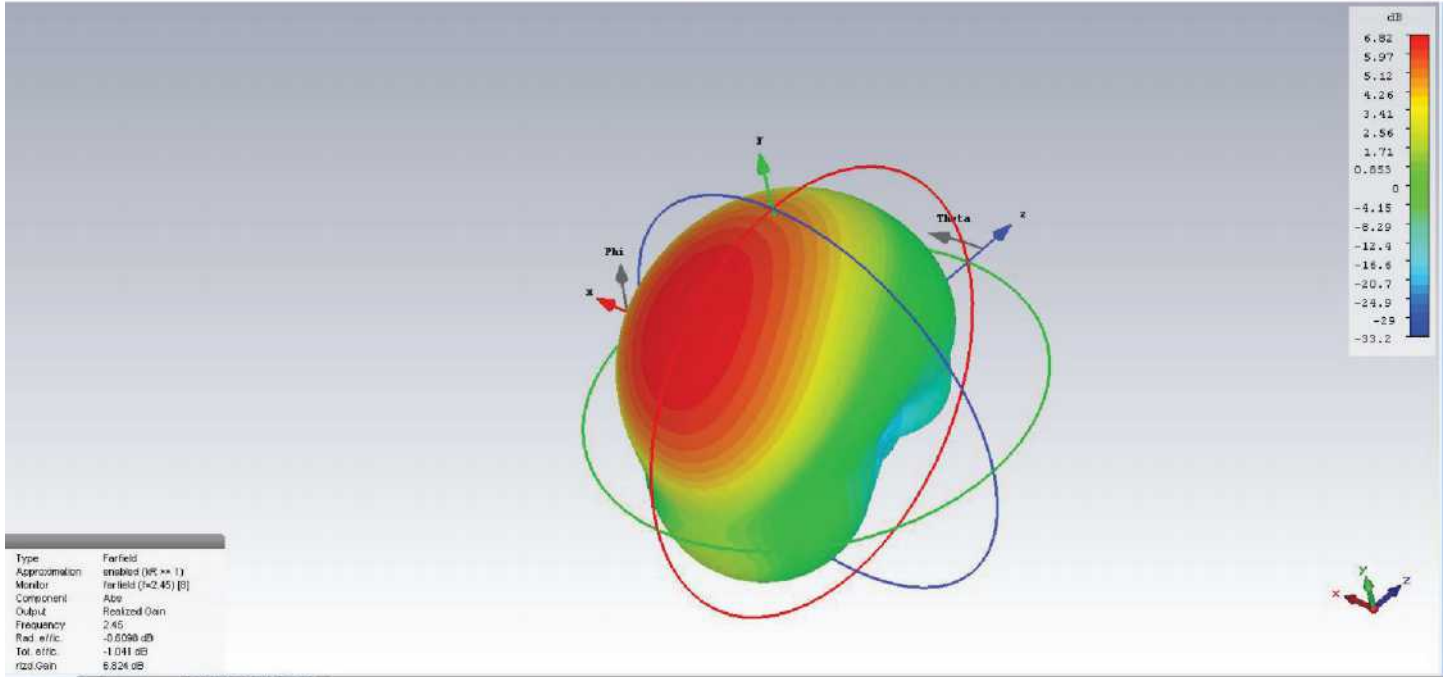
At 2.4 GHz



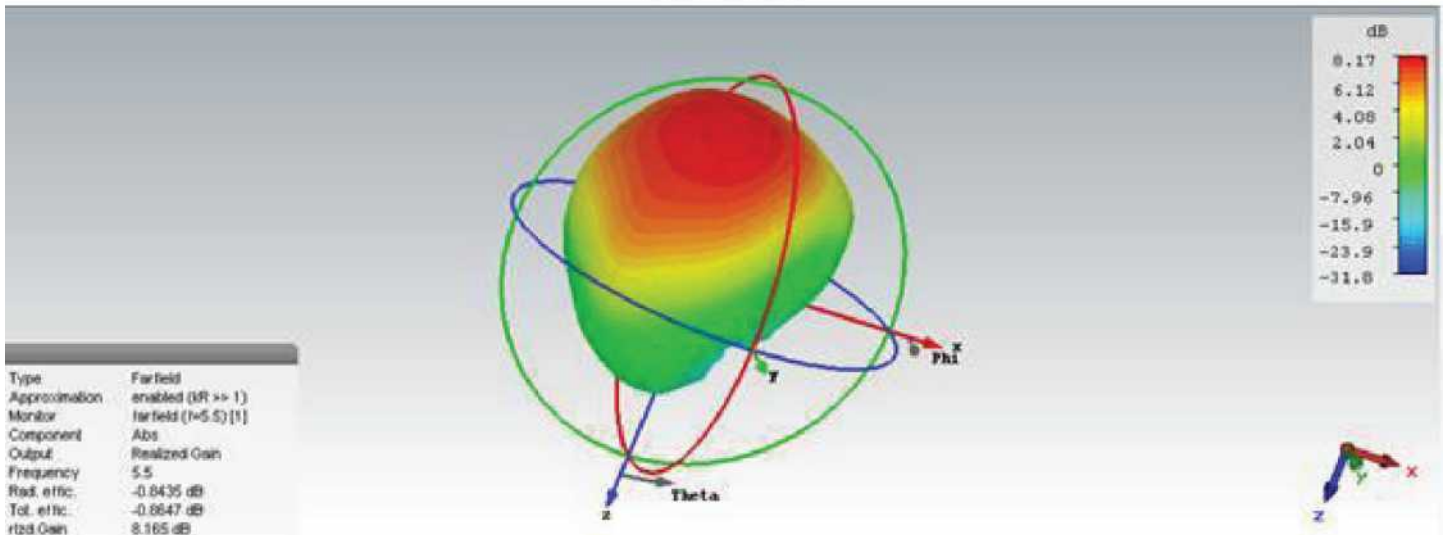
At 5 GHz

## 3D Radiation Pattern of Each Element

### 2.45 GHz



### 5.5 GHz



## Component Map

