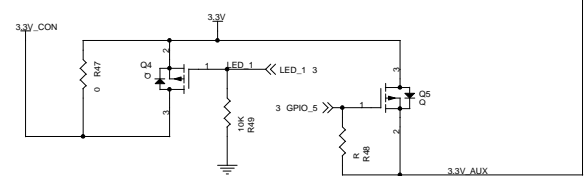
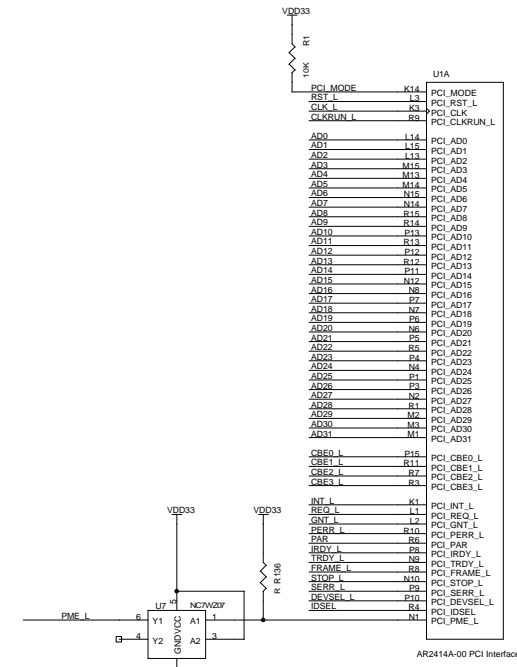
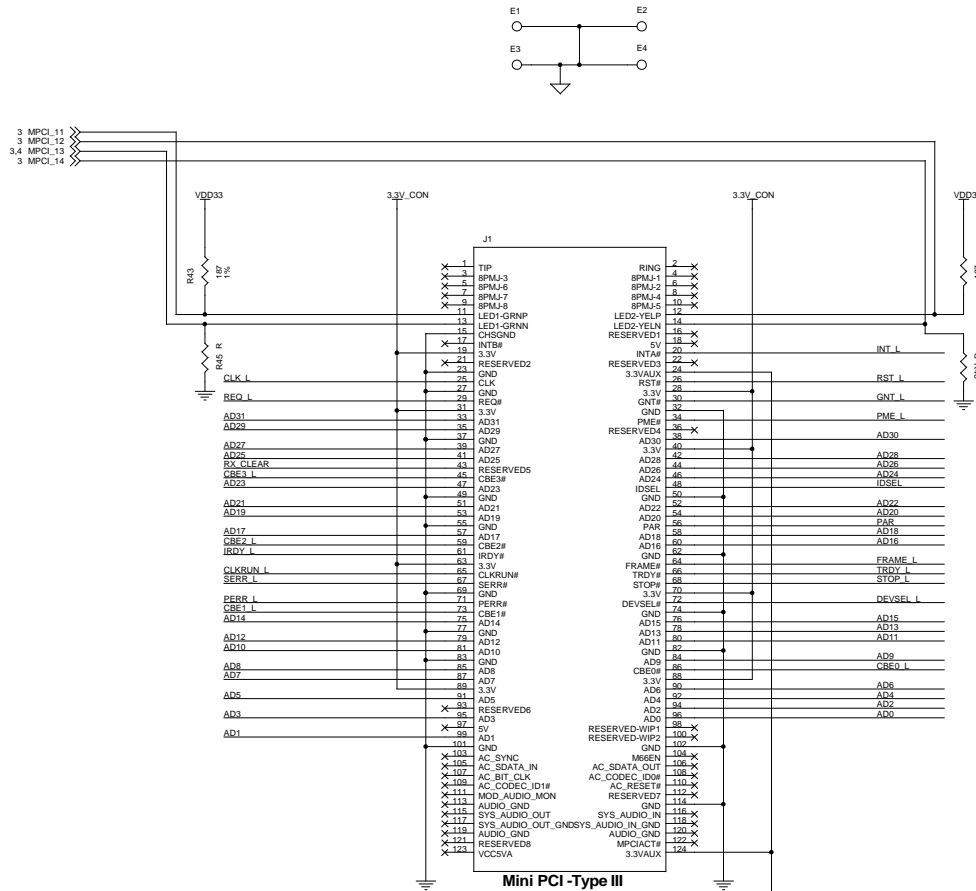


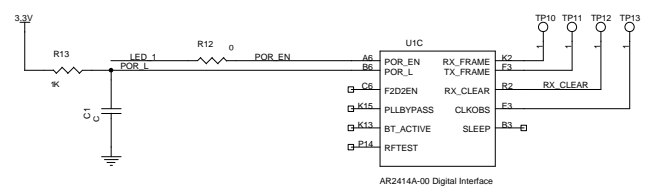
# MB51 - AR5005GS Based 802.11b/g Type IIIb Mini PCI

ATHEROS CONFIDENTIAL  
PRELIMINARY

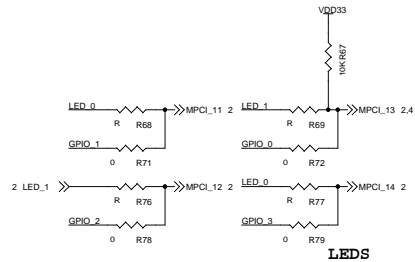
DATE	REVISION NUMBER	INITIALS	DESCRIPTION
6/11/04	245-01268-480, Rev 000	CL	Initial release. Branched from MB51-245-01268-080. Edited title block, deleted U1, cleared cache and replaced U1 with AR2414A-00.
6/11/04	245-01268-481	CL	Excel BOM hand-edited. EPICOM PA added as Alternate Vendor. PCB part number up-rev'd as well as header and footer information.
7/6/04	245-01268-482	CL	Changed R120 from 150 to 200.
7/12/04	245-01268-483	CL	Add OEpic as alternate XPA following regulatory certification and ATMEL as alternate EEPROM.



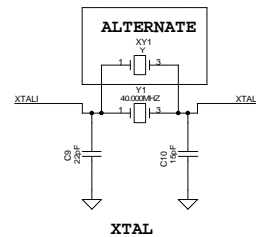
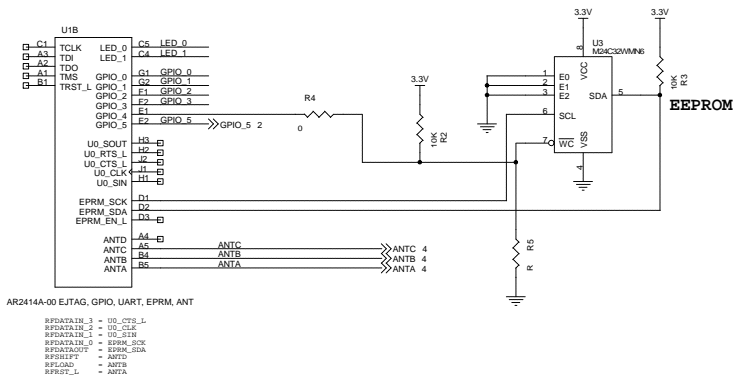
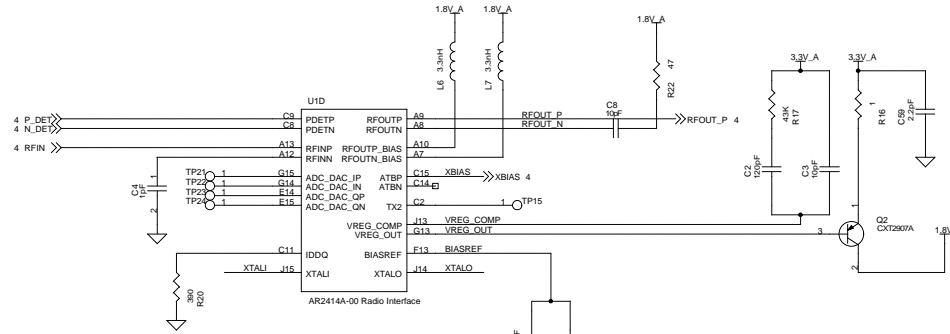
WAKE ON LAN



**ATHEROS CONFIDENTIAL**  
**PRELIMINARY**



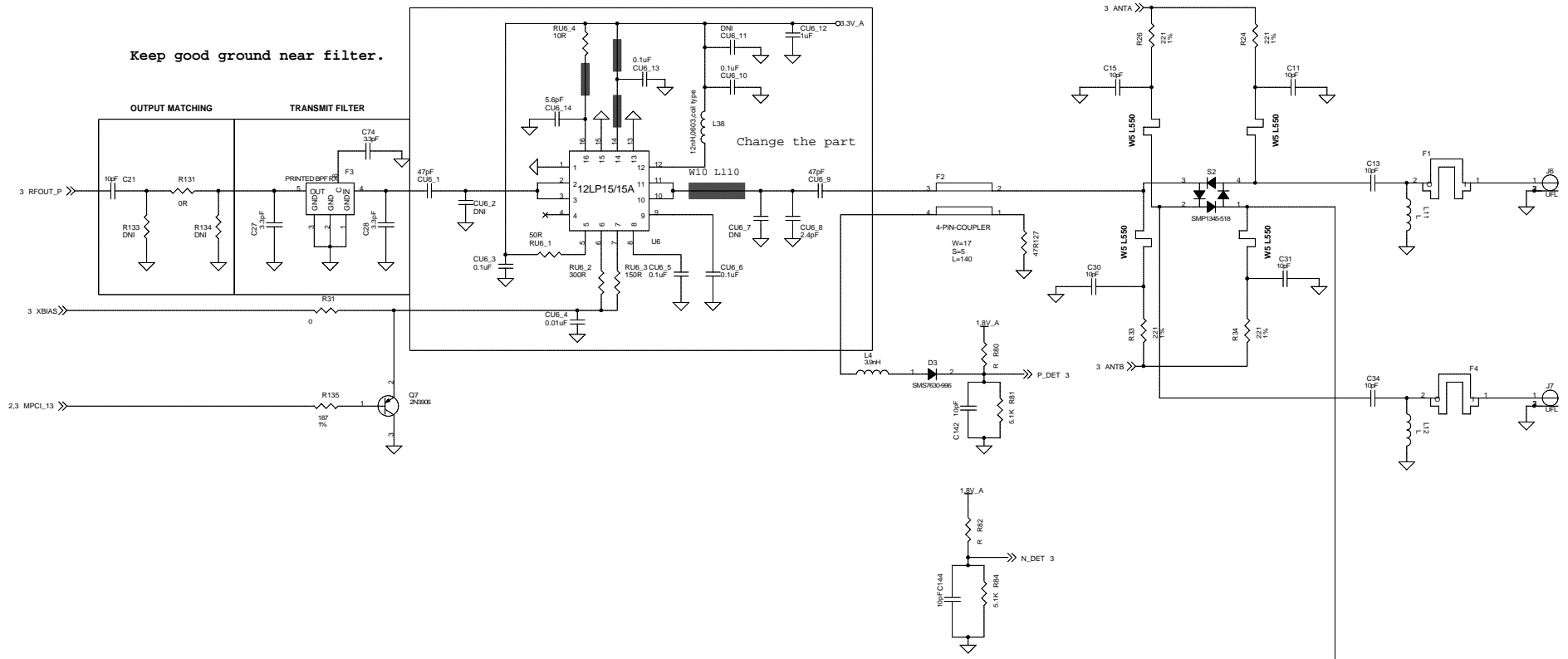
**IMPORTANT NOTE: NEVER INSTALL R69 AND R76.**



**ATHEROS CONFIDENTIAL**

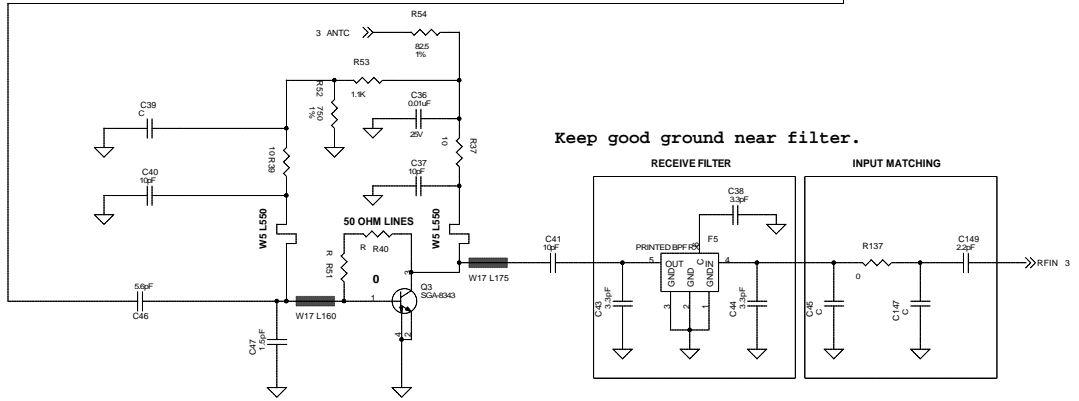
**PRELIMINARY**

Keep good ground near filter.



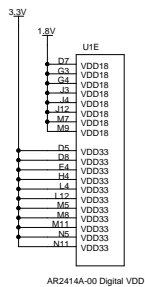
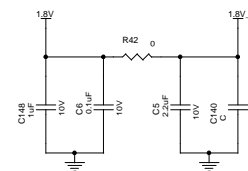
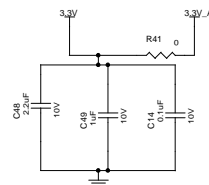
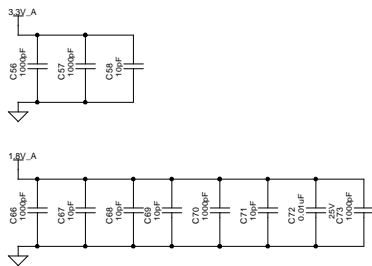
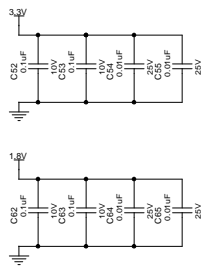
Change the part

Keep good ground near filter.

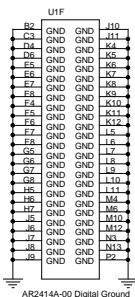


**ATHEROS CONFIDENTIAL**  
**PRELIMINARY**

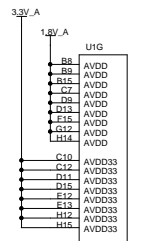
# ATHEROS CONFIDENTIAL PRELIMINARY



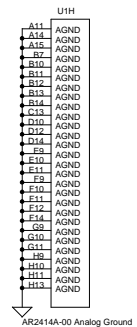
AR2414A-00 Digital VDD



AR2414A-00 Digital Ground



AR2414A-00 Analog VDD



AR2414A-00 Analog Ground

