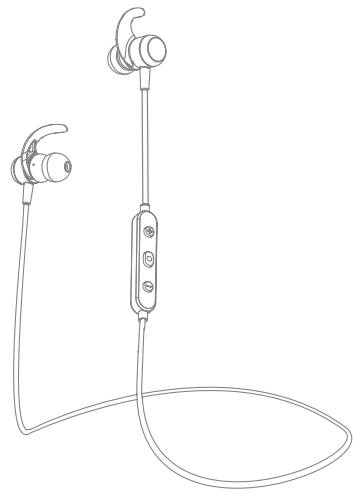


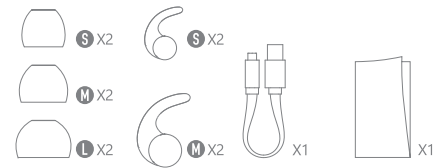
M45A



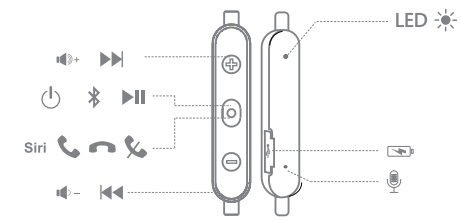
Bluetooth Headphone

We are appreciate for purchasing our new M45A product. This guide contains instructions for setting up and using your Bluetooth Headphone easily.

① Package

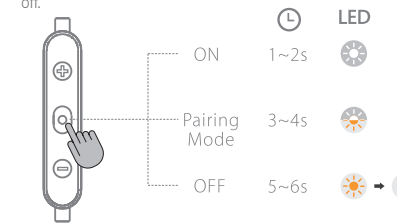


② Diagram



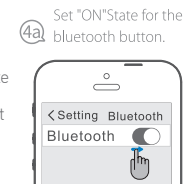
③ Power ON / OFF

Press the MFB for 4 seconds, with voice prompt: power off.

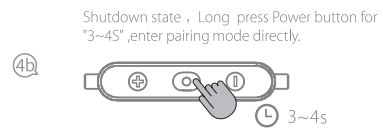


④ How To Pair

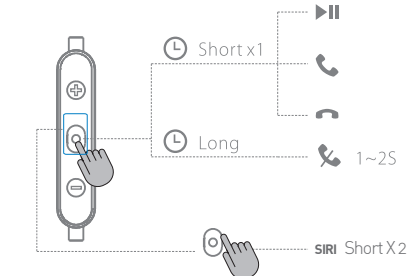
Please confirm your devices supporting Bluetooth.
1. Make sure the earphone is powered off.
2. Press the MFB button for 5 seconds until the light flashes orange and white alternately.
3. Turn on the Bluetooth function of your devices and set to scan for Bluetooth devices.
4. In the pairing device list, select "M45A" to continue to pair.
5. Enter 0000 as password or PIN, then the devices are successfully paired, and the light will flash white every 7 seconds.
Tips: If your smart phones support Bluetooth 2.1 or higher, you don't need to enter the password.



Be cautious: The pairing status has been activated for 90 seconds. The light will flash white every 7 seconds if the pairing succeeds. However, the light still flashes alternately and it will automatically recover to the standby status, if the earphone hasn't been paired with your devices. Then please retry the above pairing procedures from 1 to 4.



⑤ Play / Pause / Answer / Hang Up / Reject / Siri



End the Call

Press MFB button once.

Answer the Call

Press MFB button once.

Reject the Incoming Call

Press the MFB button for 2 seconds to reject an incoming call.

Voice Control

Double-click the MFB to SIRI
Double-click the MFB to escape SIRI

Call Switching

During the call, press on the MFB for 1 second to switch from the earphone to your smart phone, 1 more second switch to the earphone again.

Pair and connect 2 phones simultaneously

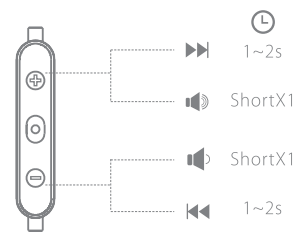
1. Press the MFB for 2 seconds to enter the pairing status.
2. The second smart phone sets to search and connect the bluetooth earphone.
3. From the pairing device list of the first phone to find the earphone to launch the connection.

Three-way calling

While on call with Party A, Party B calls

1. Press on MFB button for 2 seconds to reject a call.
2. Shortly press the MFB to answer an incoming call and end the current call.
3. Double click the MFB to answer the incoming call and hold the current call.
While on call with Party A, the call with Party B is held
1. Double click the MFB button to hold the current call and get Party B through.
2. Shortly press the MFB button to end the current call and get Party B through.

⑥ Volume Control / Music Control



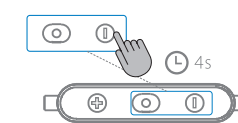
Microphone Muting

During a call, press "V+" and "V-" simultaneously and the microphone is muted. Repeat this step to cancel muting.

Music switching

Previous track when press the "V+" for 2 seconds. Next track when press the "V-" for 2 seconds.

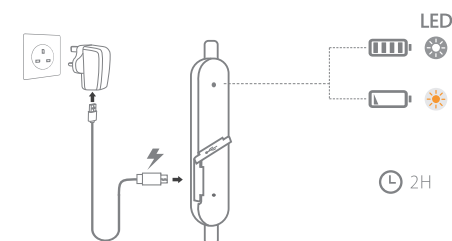
⑦ Reset



Restore to factory settings

Press the MFB and V- simultaneously for 4 seconds in standby mode.

⑧ Charge Battery



FAQ

Q: unable to connect to the phones:

1. Make sure the Bluetooth earphone is power on; has sufficient electricity; finish the pairing process.
2. Turn on Bluetooth of your devices.
3. The distance between these two less than 10 meters and no barriers or electric devices between them.
4. Please repair after restoring the earphone to factory settings.

Information of battery

Great performance of new battery requires 2or3 cycles of a complete charge and a complete discharge.
Supercooling, and overheating Environment cause damage to the battery and please keep the temperature between 15 and 25 degrees Celsius.
Keep the battery away from fire, which will cause explosion.
Be careful to dispose and recycle the battery.

Tips: If you don't often use the earphone, please charge and discharge every 3 months.

Quality Warranty

The product has one-year warranty and 30-day hassle-free money back guarantee from the date of purchase.

Be Cautious: Any of the below situation is not in the warranty service:

1. The warranty date is expired.
2. Human factors and accidental or deliberate damage is done to the product. (for example: improper use against the user manual, improper set up which causes error)
3. Any error damage caused by force majeure such as earthquake, fire, flood etc.
4. Deliberate assembling, repair or reform without permission from our company.

FCC Statement

Changes or modifications not expressly approved by the party responsible for compliance could void the user's authority to operate the equipment.

This equipment has been tested and found to comply with the limits for a Class B digital device, pursuant to Part 15 of the FCC Rules. These limits are designed to provide reasonable protection against harmful interference in a residential installation. This equipment generates uses and can radiate radio frequency energy and, if not installed and used in accordance with the instructions, may cause harmful interference to radio communications. However, there is no guarantee that interference will not occur in a particular installation. If this equipment does cause harmful interference to radio or television reception, which can be determined by turning the equipment off and on, the user is encouraged to try to correct the interference by one or more of the following measures:

- Reorient or relocate the receiving antenna.
- Increase the separation between the equipment and receiver.
- Connect the equipment into an outlet on a circuit different from that to which the receiver is connected.
- Consult the dealer or an experienced radio/TV technician for help

This device complies with part 15 of the FCC rules. Operation is subject to the following two conditions (1) this device may not cause harmful interference, and (2) this device must accept any interference received, including interference that may cause undesired operation