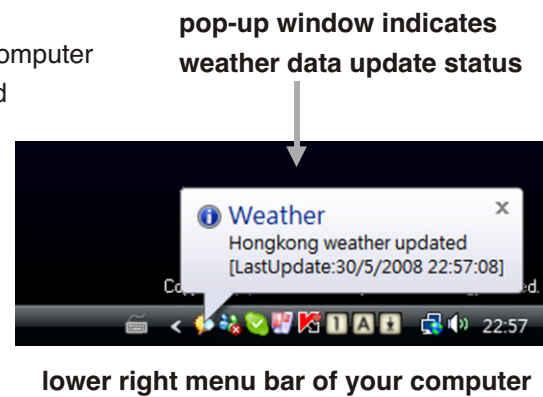


## How to change a city

You could change a city anytime when your computer is on-line :-

- Step 1** Locate the small weather icon on the lower right menu bar of your computer
- Step 2** Right click your mouse at the weather icon, a menu will be displayed
- Step 3** Click and select a country and city
- Step 4** A pop-up window will appear next to the weather icon to indicate weather data of the newly selected city is up-dated

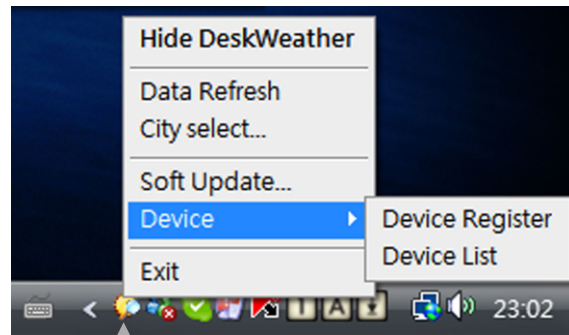
Be patient : New weather data of newly selected city will be displayed on your internet weather station in around 1 minute.




## How to register the Internet weather station again with the USB in case of loss of connection

- Step 1** If connection is lost or does not work, click "Device", then click "Device Register" on your computer
- Step 2** Press RESET on your internet weather station or power it up again, fresh weather data will be received and displayed again in a short moments.

By doing so, you could register more than one main unit internet weather station with one computer / USB.



Right click small weather icon at lower right of menu bar

When your internet weather station receives data from the wireless USB, the  icon next to the time digits will flash and the LED on the wireless USB will flash. The LCD display will flash slightly during first time data transmission, this is normal.

**To Up-date Latest Installation Program through the internet :** click "Soft Update"

**To minimize the Desktop Weather window :** click the minimize icon "-" at the top of the Weather window, To hide the Desktop Weather Window, click "Hide DeskWeather"


## TO SET YEAR, CALENDAR, DAY OF WEEK, 12/24 HOUR AND TIME

1. Press and hold the SET button for 3 seconds, the time digits change to Year digits "2008" and start to flash. Use + or - button to set the correct year.
2. Press SET again, the Month digits start to flash. Now use + or - button to set the correct month.
3. Press SET again, the Date digits start to flash. Now use + or - button to set the correct date
4. Press SET again, the language selection for the Weekday starts to flash. Now use + or - button to select a language. There are 7 languages of Weekday: English, German, French, Danish, Italian and Spanish.

5. Press "SET" again, the time digits change to "24 Hr" and start to flash. Now use "+" or "-" to select 12 Hr format or 24 Hr format. When "24 Hr" format is selected, calendar format is Date-Month, when "12 Hr" format is selected, calendar is Month-Date.
6. Press "SET" again, the Hour displays start to flash. Now use "+" or "-" button to set the correct hour.
7. Press "SET" again, the Minute digits start to flash. Press "+" or "-" button to set the correct minute.
8. Press "SET" to return to normal mode.

During the setting process, your weather station will return to normal mode in 20 seconds automatically if there is no further press of any button.

## DAYLIGHT-SAVING TIME (DST)

your internet weather station will adjust to daylight saving time automatically from the internet. When daylight saving time is active,  icon will appear next to the time digits.

## TO SET THE ALARMS

To view the set alarm times, press "SET" once. Alarm 1 set time is displayed. Press "SET" again to view alarm 2 set time.


### When Alarm 1 set time is displayed :-


Press and hold "SET" for 2 seconds, hour digits of Alarm 1 flash. Press "+" or "-" to set your desired hour of Alarm 1. Press "SET" again, minute digits of Alarm 1 flash. Press "+" or "-" to set your desired minute of Alarm 1.

### When Alarm 2 set time is displayed :-

Press and hold "SET" for 2 seconds, hour digits of Alarm 2 flash. Press "+" or "-" to set your desired hour of Alarm 2. Press "SET" again, minute digits of Alarm 2 flash. Press "+" or "-" to set your desired minute of Alarm 2.

## TO TURN ON / OFF ALARM 1 AND/OR ALARM 2

When Alarm 1 set time is displayed, press "+" or "-" to turn on Alarm 1 and Alarm 1  icon appears. Press "+" or "-" to turn off Alarm 1, Alarm 1 icon disappears.

When Alarm 2 set time is displayed, press "+" or "-" to turn on Alarm 2 and Alarm 2  icon appears. Press "+" or "-" to turn off Alarm 2, Alarm 2 icon disappears.

## TO USE THE SNOOZE ALARM

When time reaches Alarm 1 set time, a beep alarm will sound. Press SNOOZE button once, the beep sound will stop temporarily and the AL1 or AL 2 flashes. Alarm will sound again in 5 minutes.

## TO STOP THE DAILY ALARM

When alarm is beeping, press any other key (not the SNOOZE button) to stop the alarm. Alarm will sound again same time in the next day.

Alarm Duration : 2 minutes

Snooze duration : 5 minutes