



**CONTINENTAL**  
WIRELESS

August 11, 2005

ATTN: Reviewing Engineer  
FEDERAL COMMUNICATIONS COMMISSION  
7435 Oakland Mills Road  
Columbia MD 21046

RE: INTERNAL PHOTOS FOR R5000-L-4.9, FCC ID TIG R5000-L-49

To Whom It May Concern:

Internal photographs for ODU and IDU

- FIG. ONE: ODU PCB mounted in Case
- FIG. TWO: ODU PCB Bottom View
- FIG. THREE: ODU PCB top View with RF shields in place
- FIG. FOUR: ODU PCB top view with RF shields removed
- FIG. FIVE: IDU PCB (power supply) top view
- FIG. SIX: IDU PCB (power supply) bottom view

Please contact me if there is any information you may need.

Sincerely,

Gary Weber  
Vice President  
CONTINENTAL WIRELESS, INC.

Fig one PCB mounted in Case

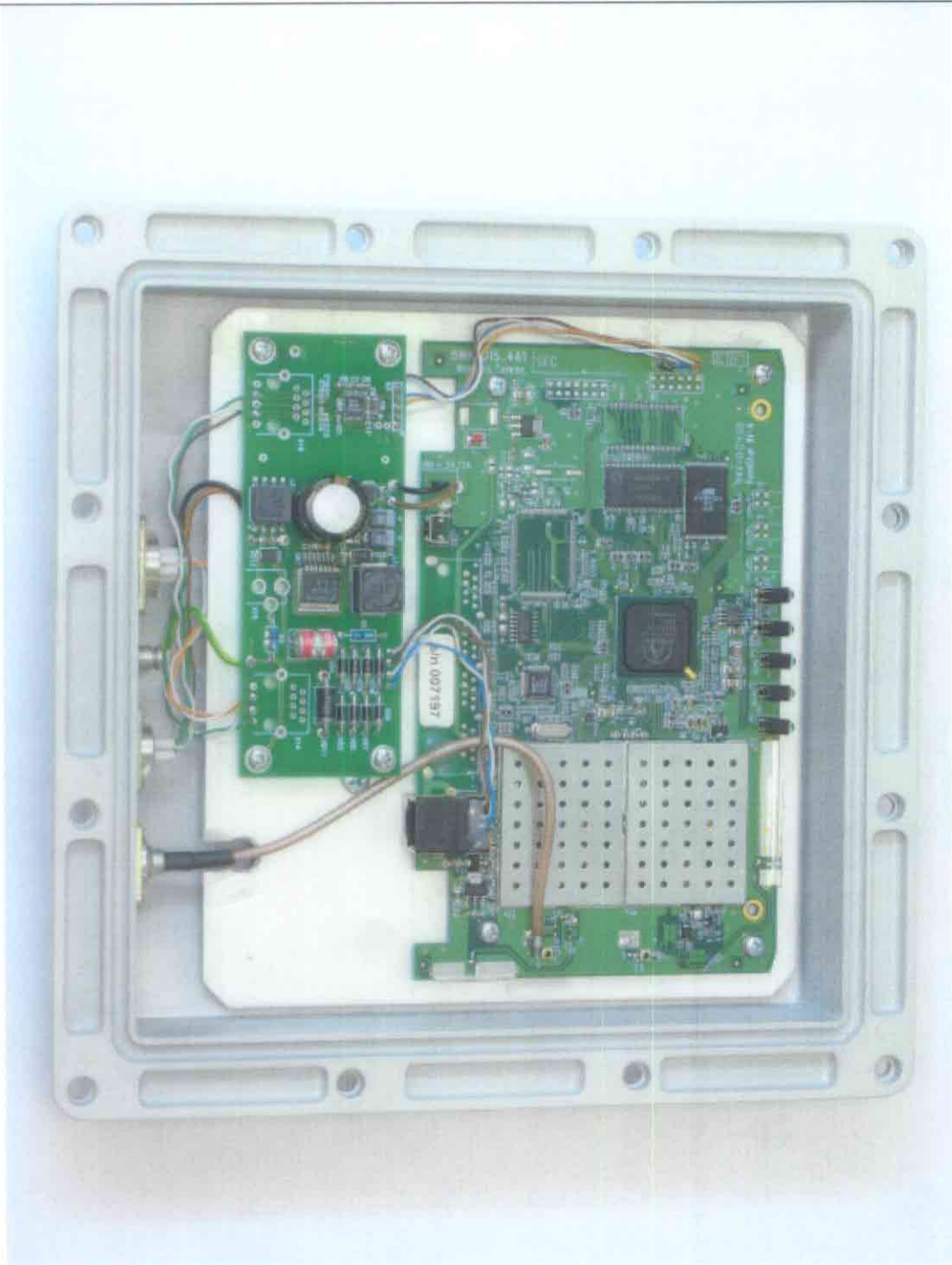


Fig two PCB Bottom View

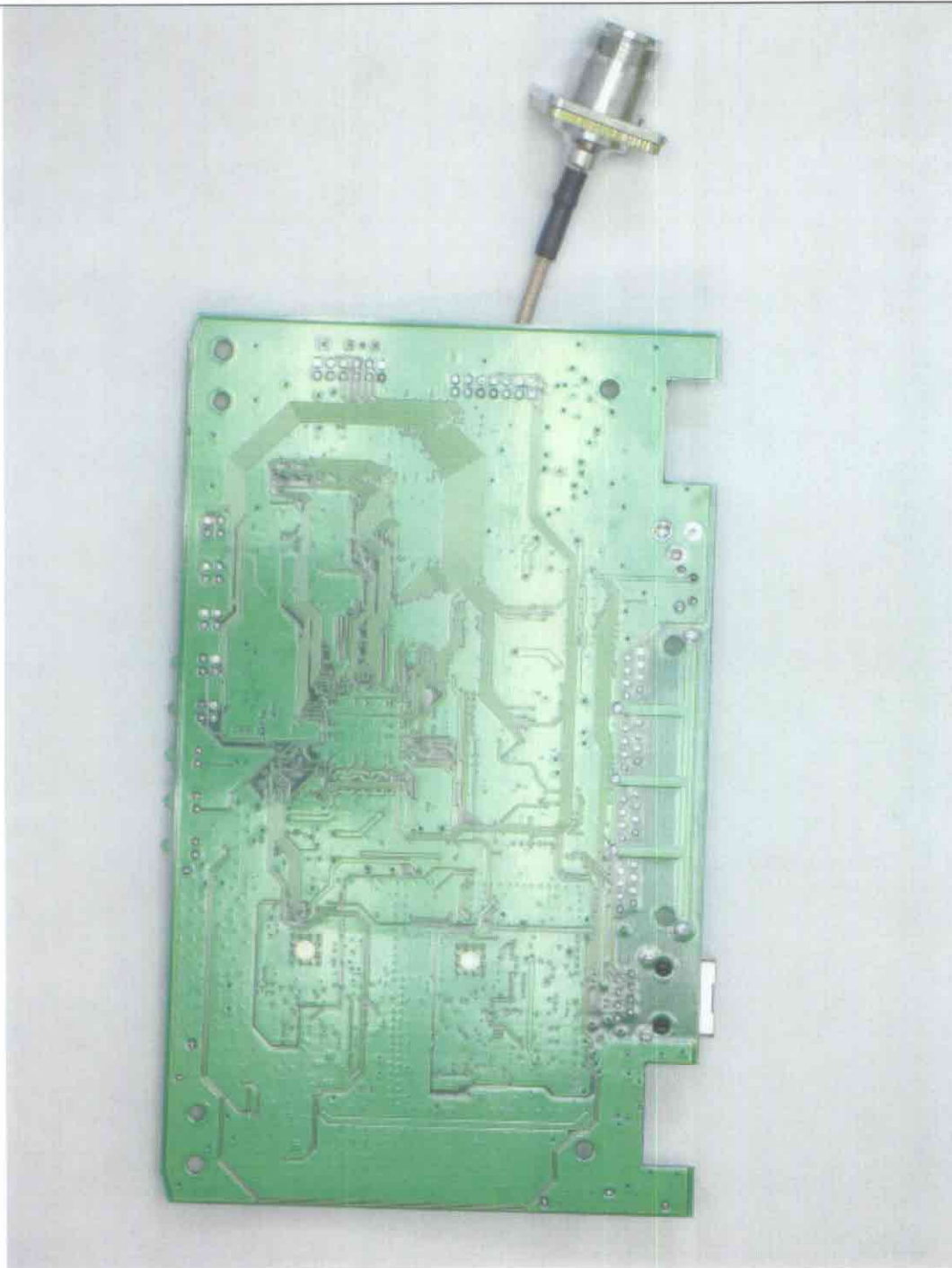


Fig three PCB top View with RF shields in place

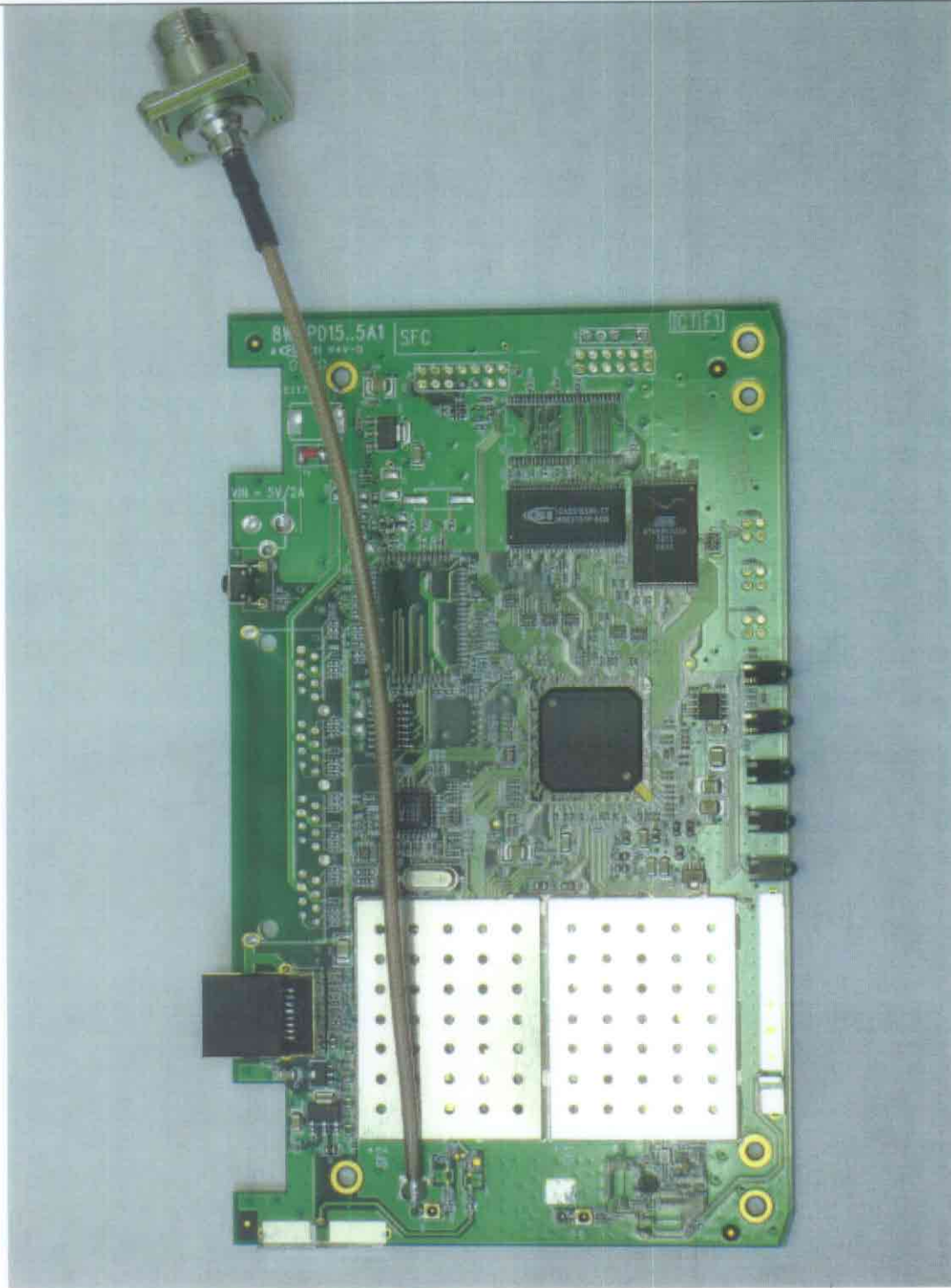


Fig four PCB top view with RF shields removed

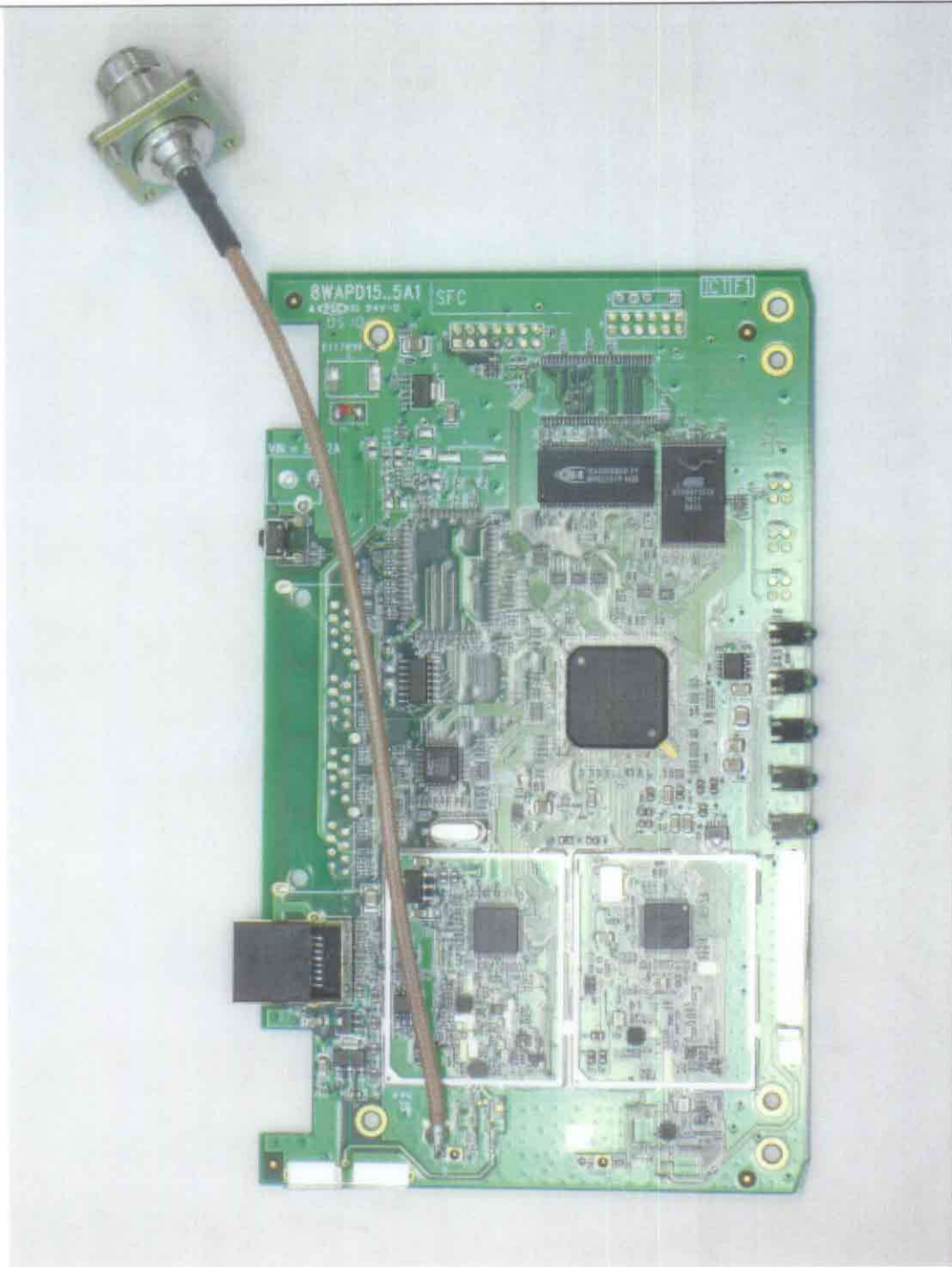




Fig five IDU PCB (power supply) top view

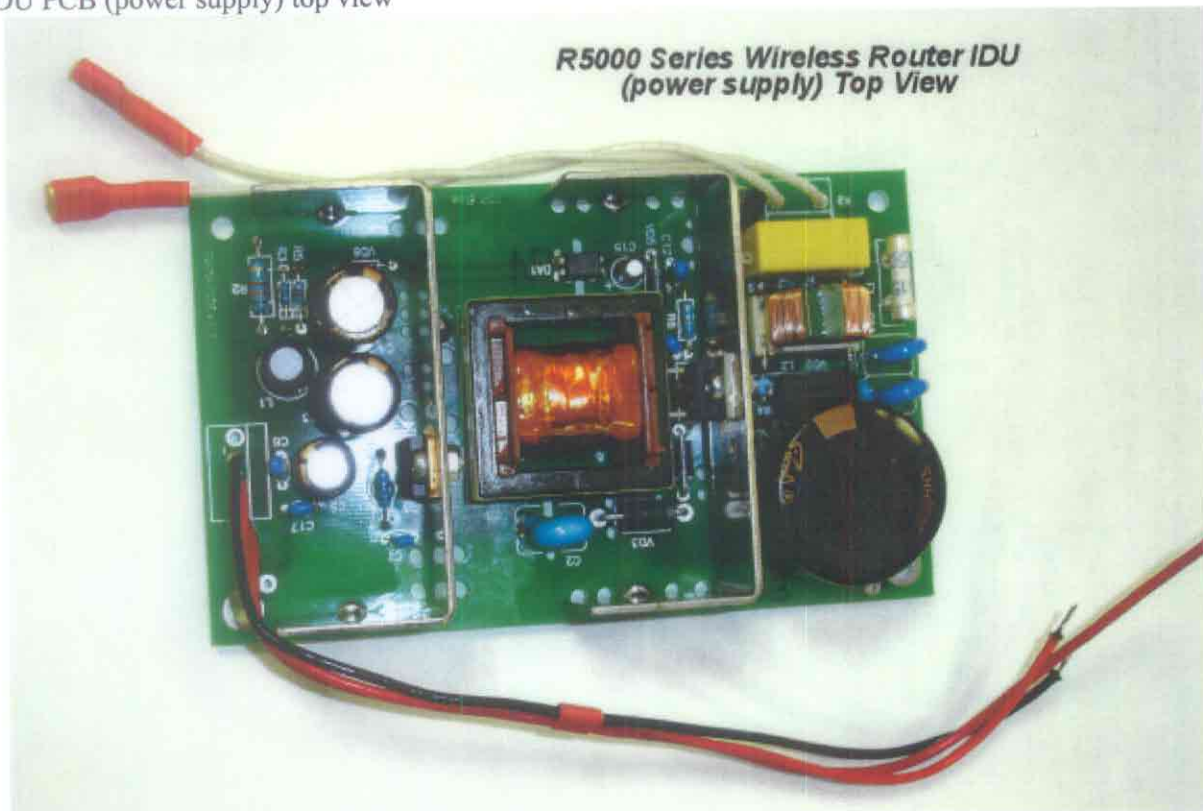


Fig Six IDU PCB (power supply) bottom view

