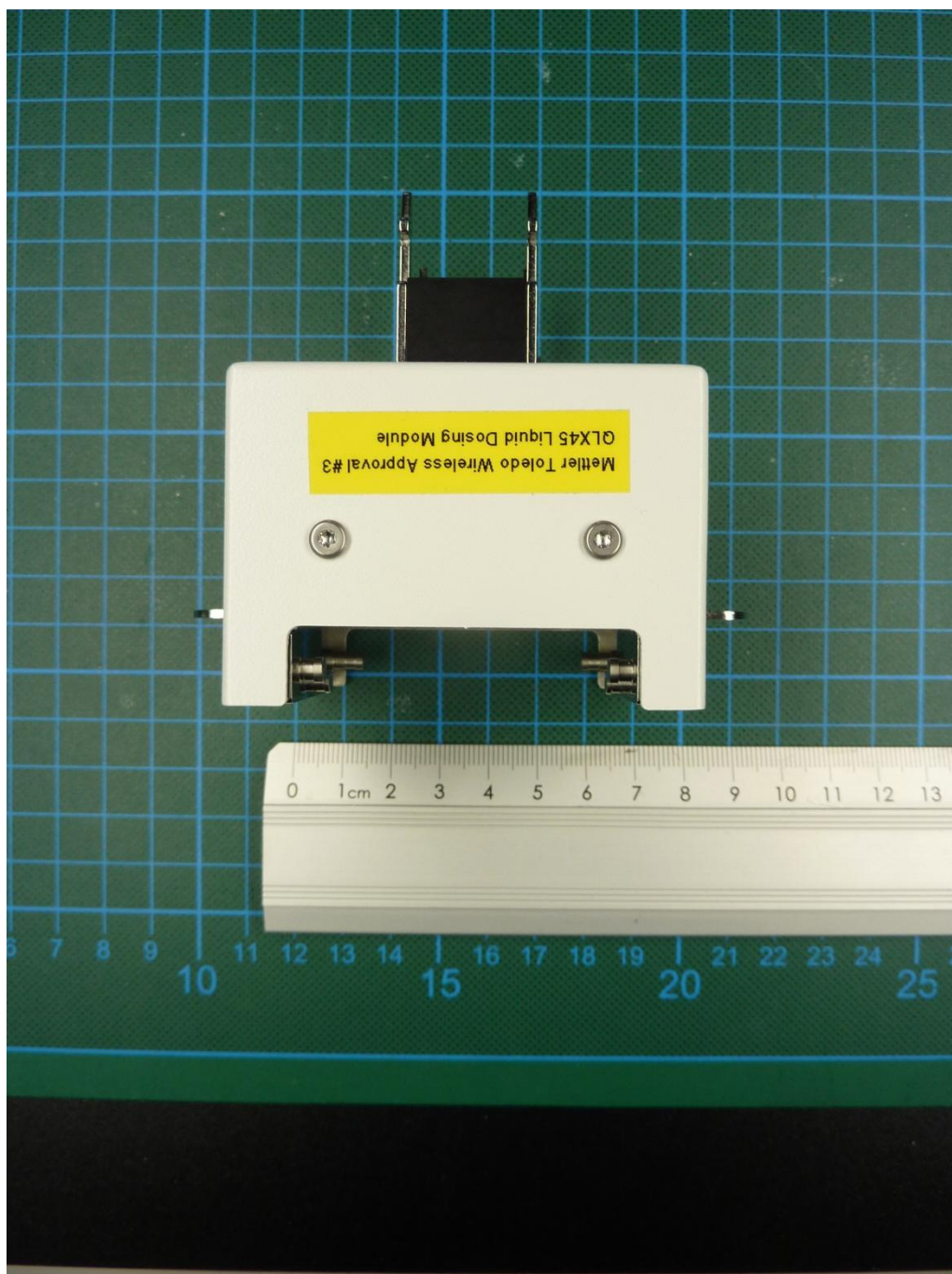
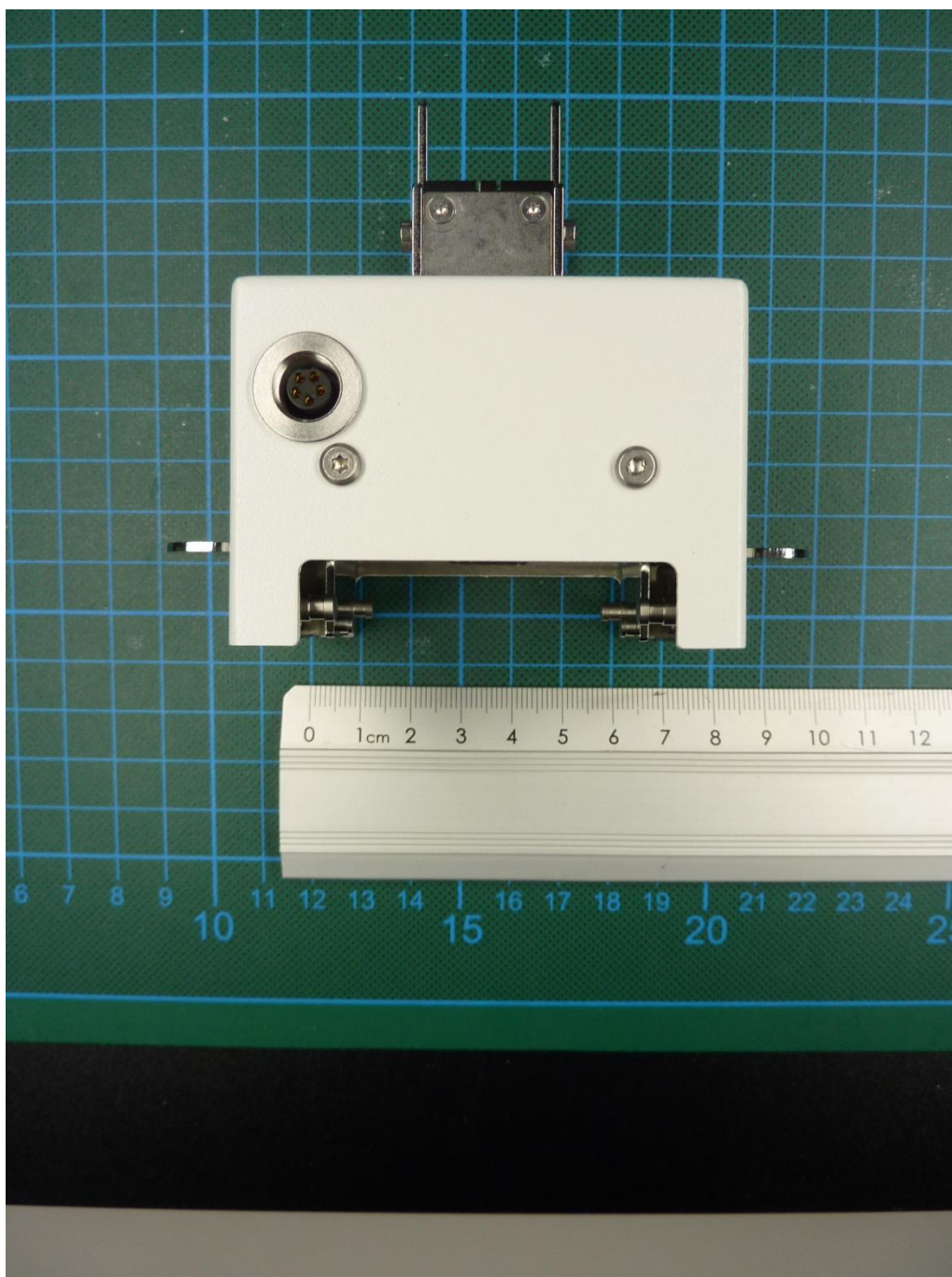


Annex B External photographs



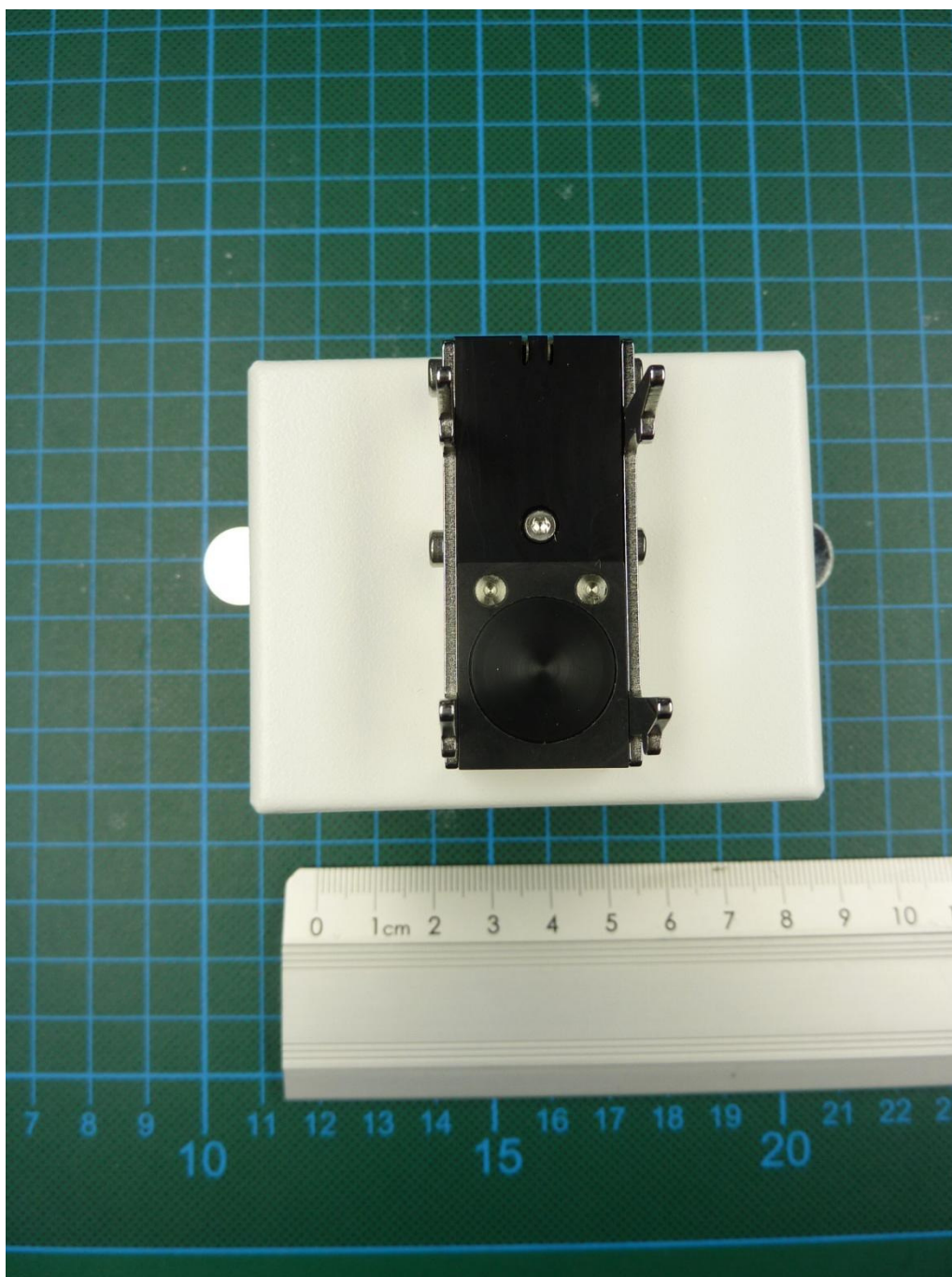
161006_4.jpg: QLX45 Liquid Dosing Module, top view

Annex B External photographs



161006_5.jpg: QLX45 Liquid Dosing Module, bottom view

Annex B External photographs

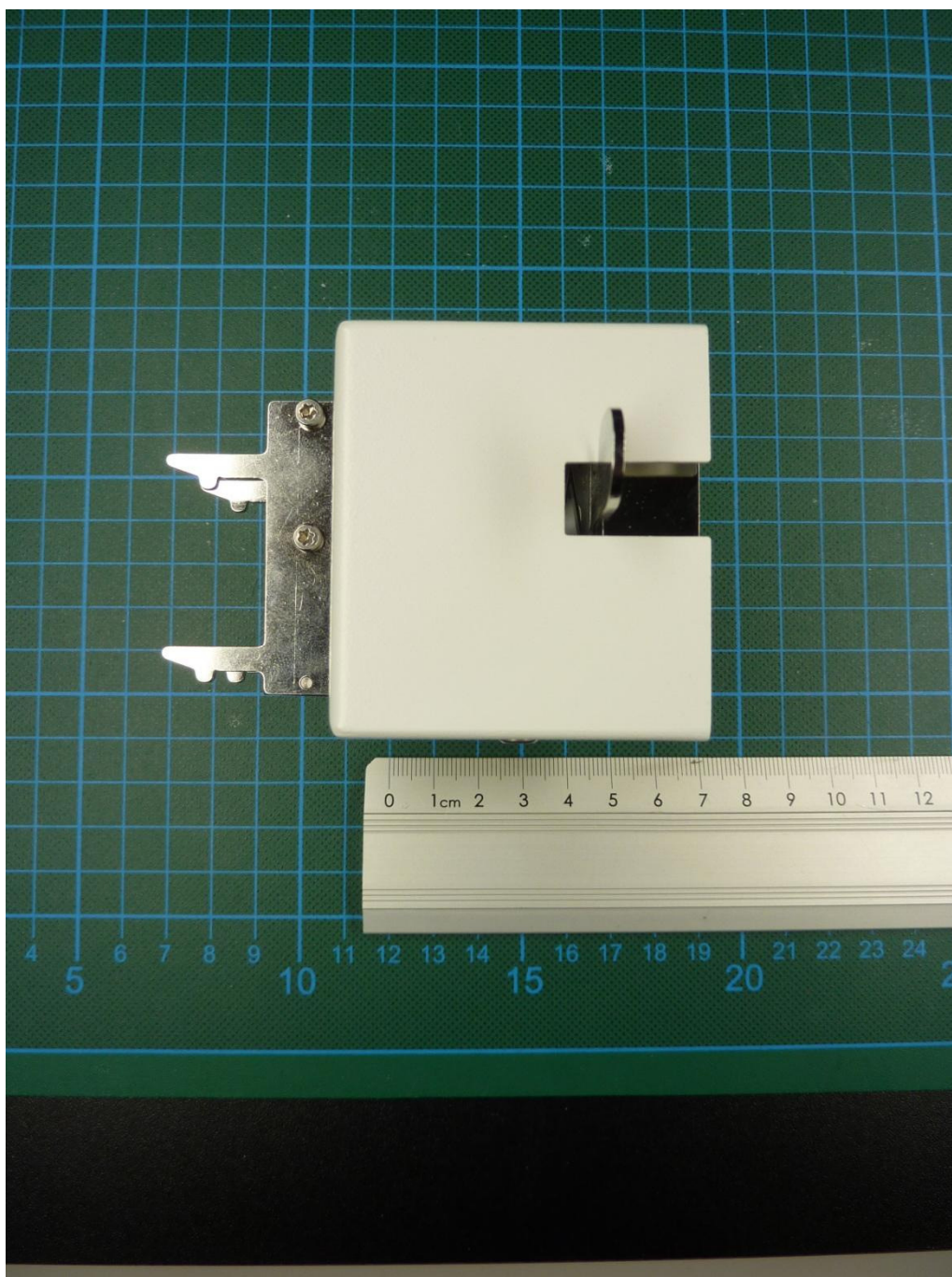


161006_3.jpg: QLX45 Liquid Dosing Module, front view



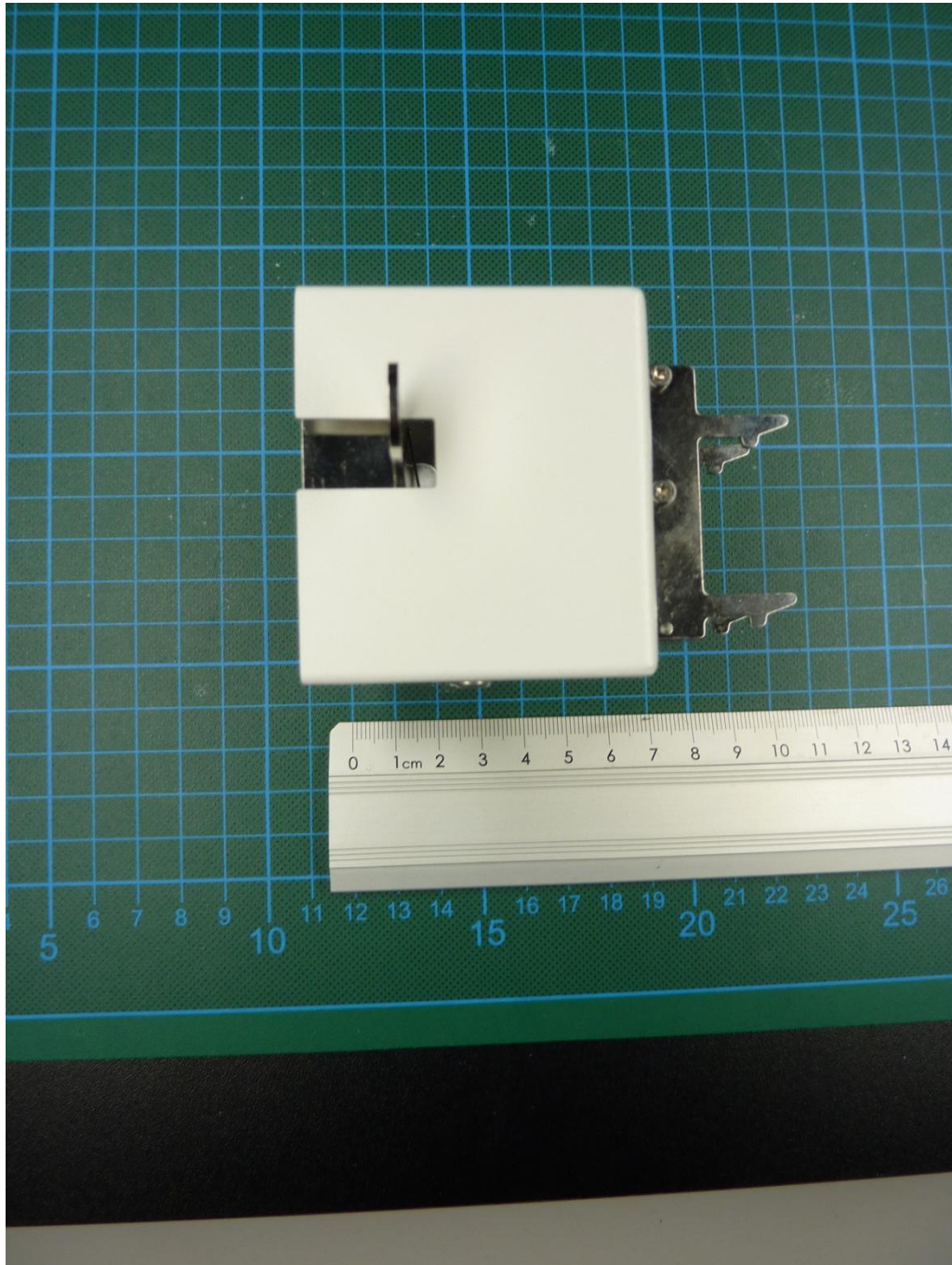
161006_6.jpg: QLX45 Liquid Dosing Module, rear view

Annex B External photographs



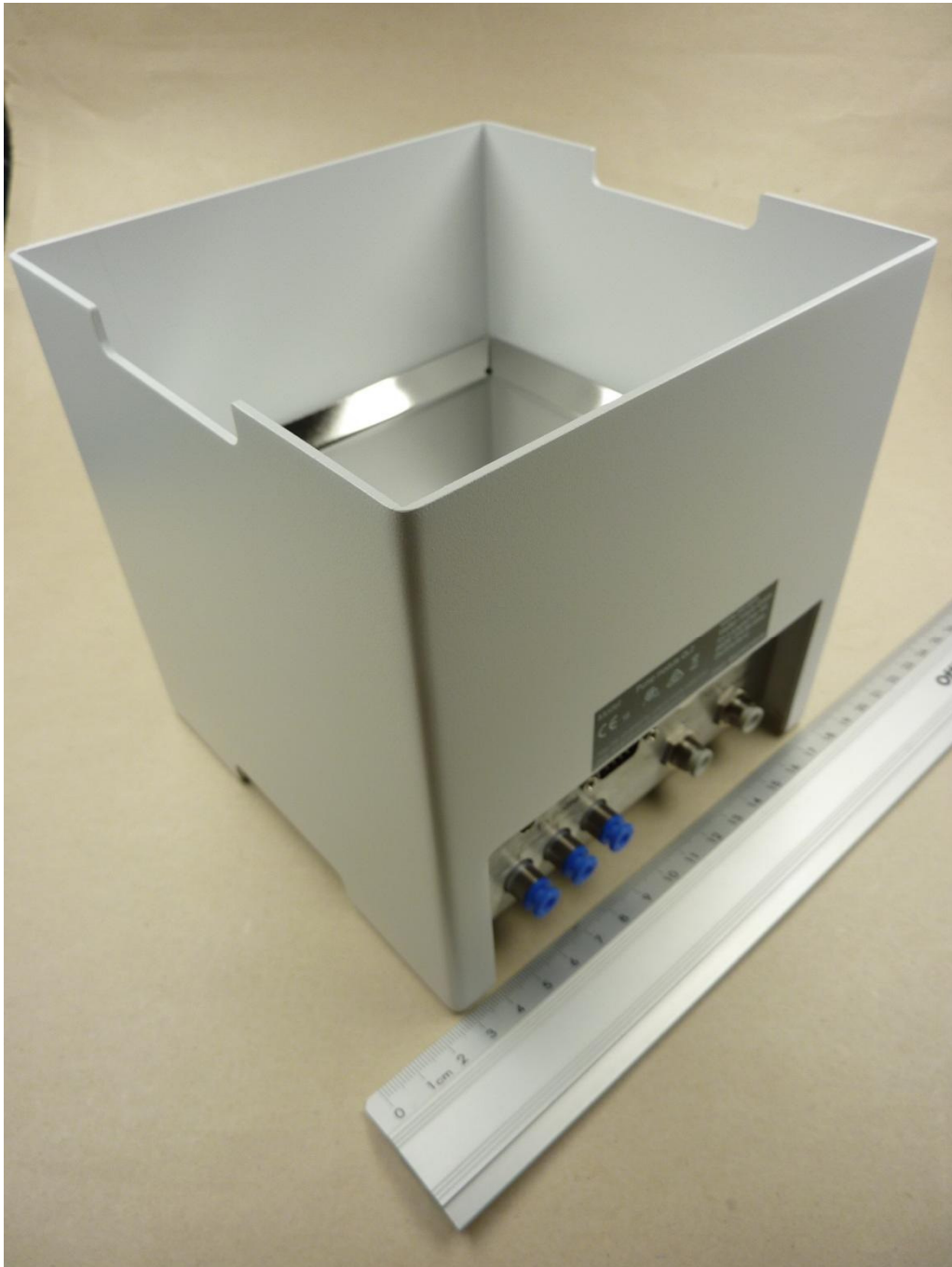
161006_8.jpg: QLX45 Liquid Dosing Module, right hand view

Annex B External photographs



161006_7.jpg: QLX45 Liquid Dosing Module, left hand view

Annex B External photographs



161006_12.jpg: Pump module QL2 (host), 3-D-view

Annex B External photographs



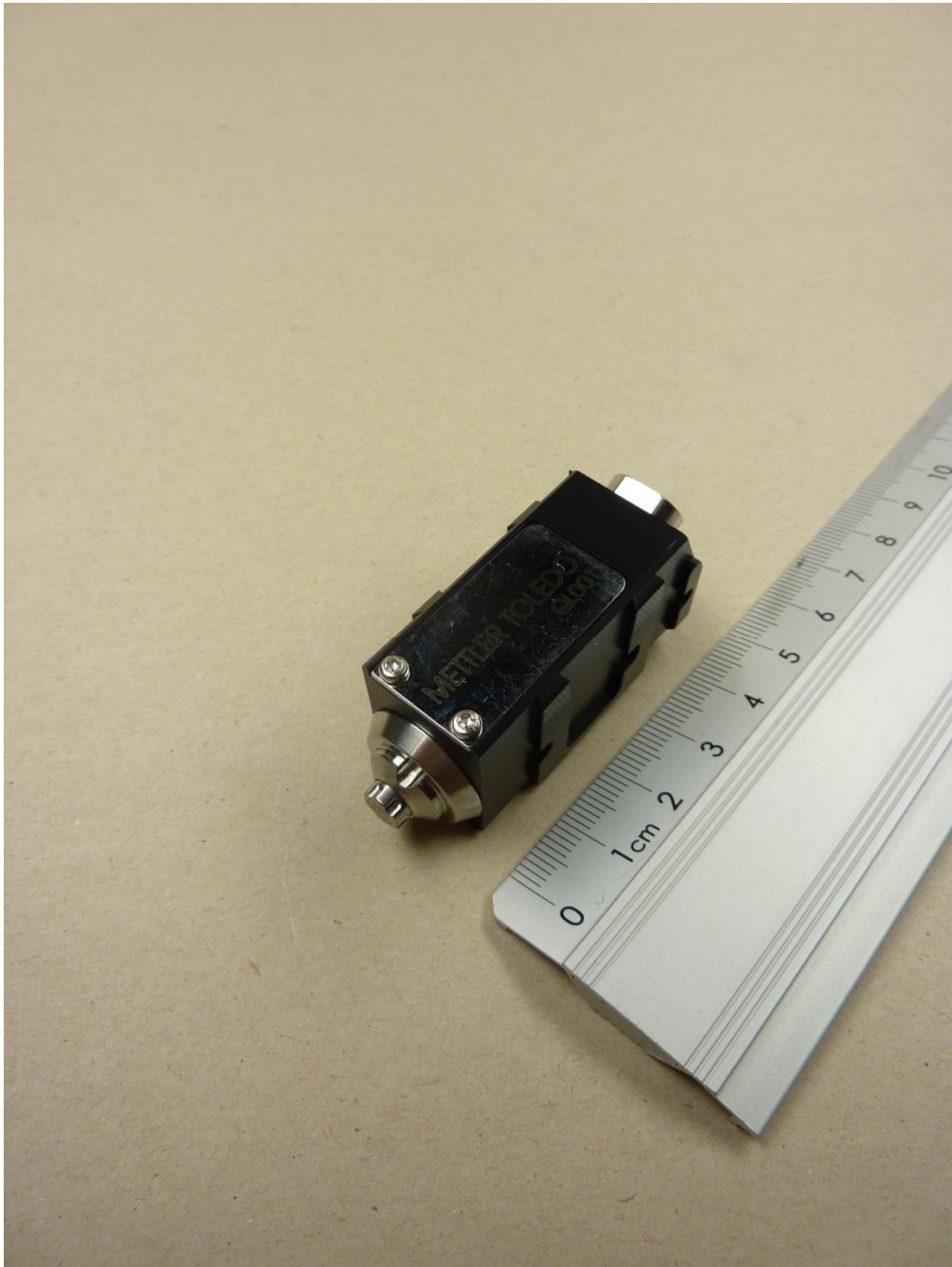
161006_13.jpg: Pump module QL2 (host), rear / type plate view

Annex B External photographs



161006_10.jpg: Liquid dosing head (with TAG), 3D-view 1

Annex B External photographs



161006_9.jpg: Liquid dosing head (with TAG), 3D-view 2

Annex B External photographs



161006_11.jpg: QLX45 Liquid Dosing Module, type plate of dedicated AC/DC adaptor