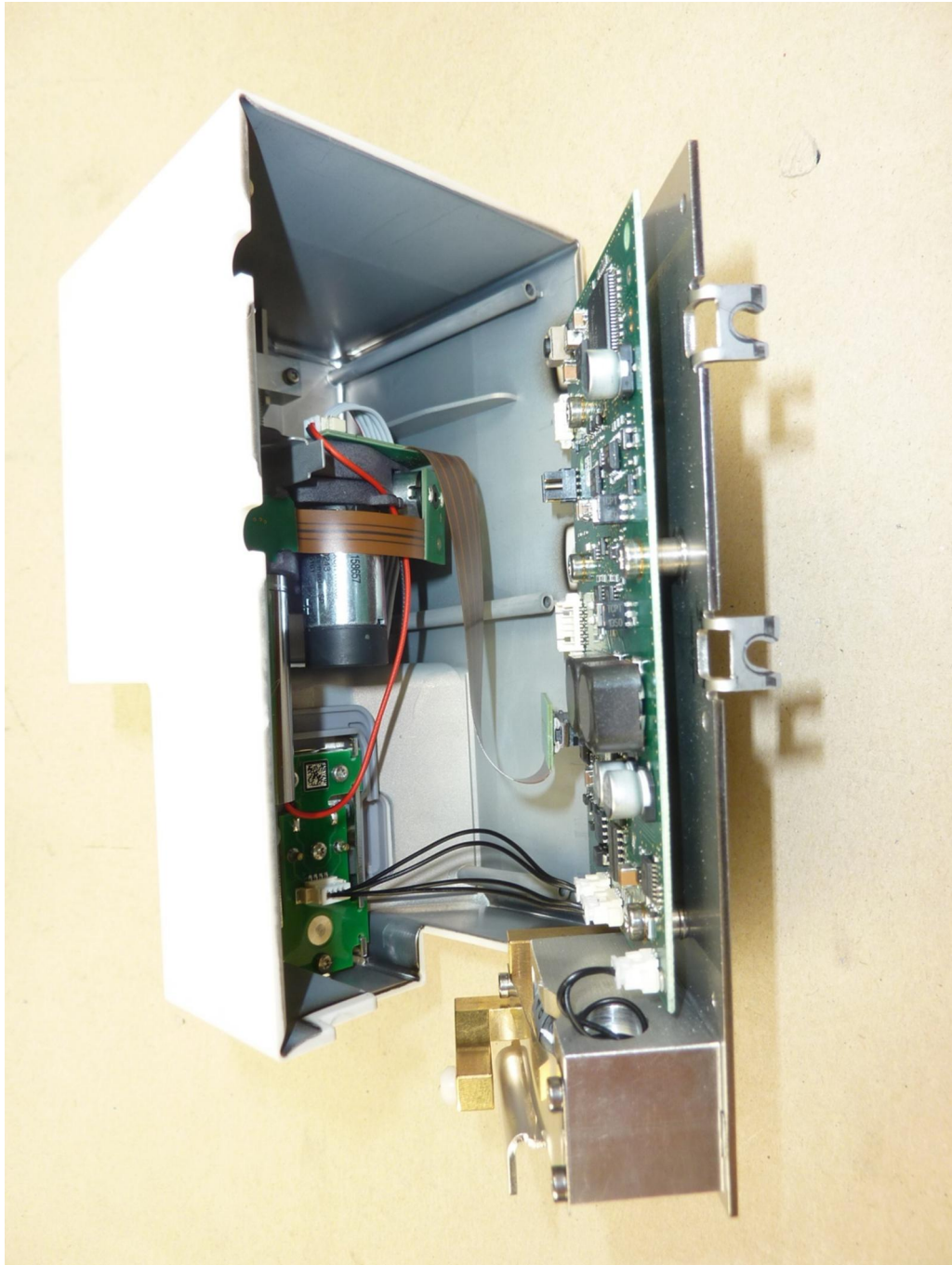
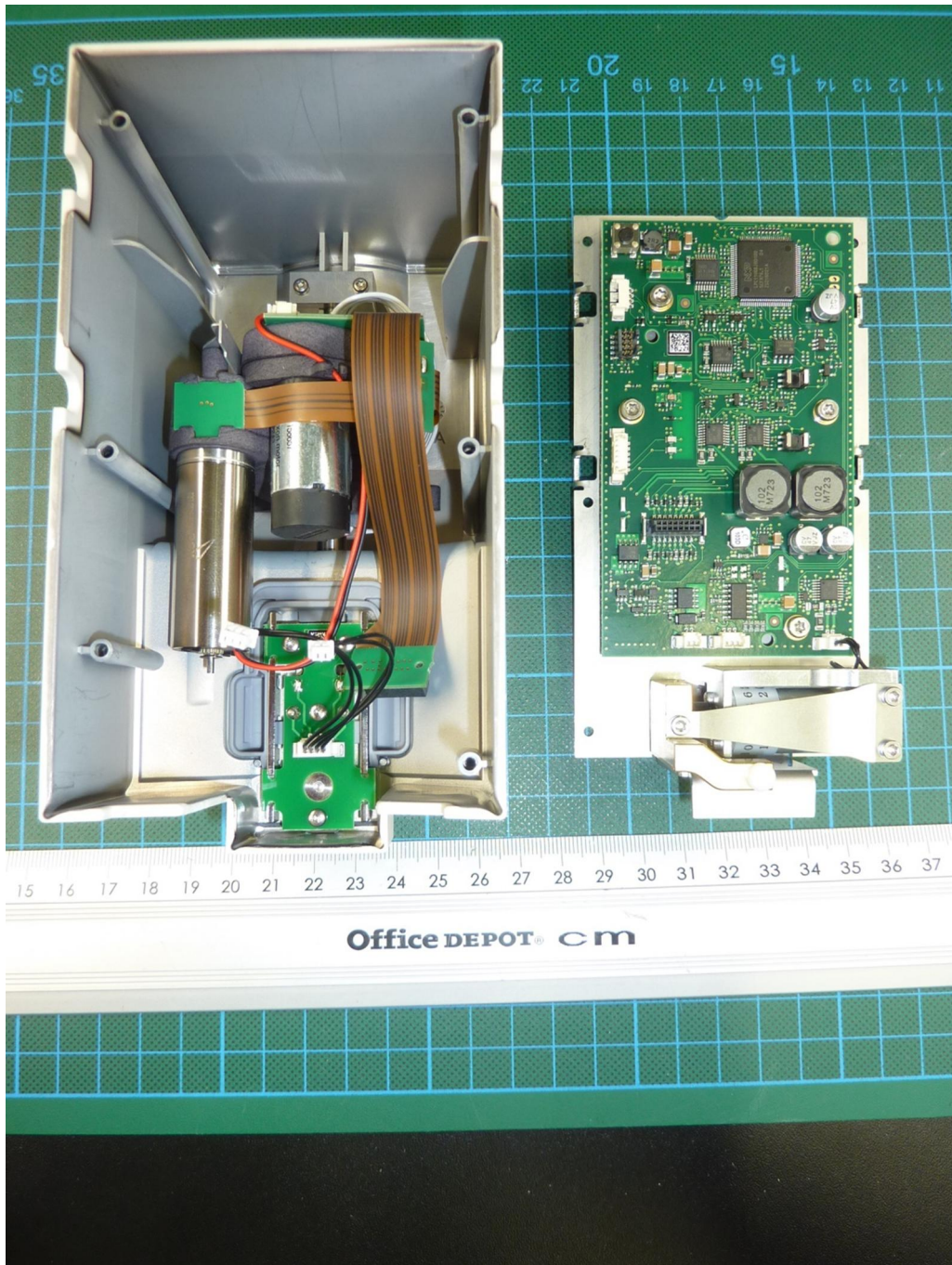


**Annex C Internal photographs**



182314\_7.jpg: dosing module, internal view, housing opened

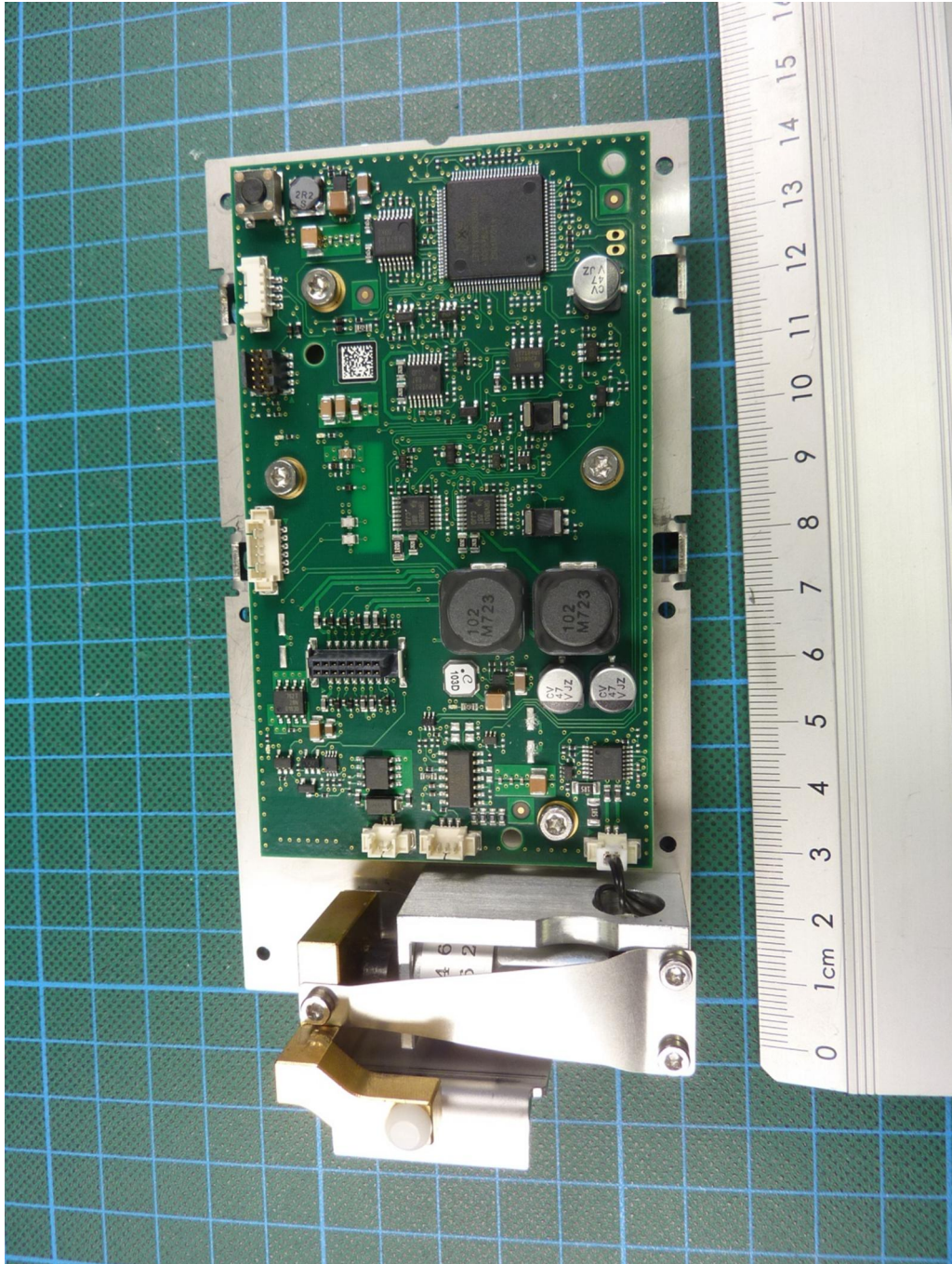
**Annex C Internal photographs**



182314\_9.jpg: dosing module, internal view



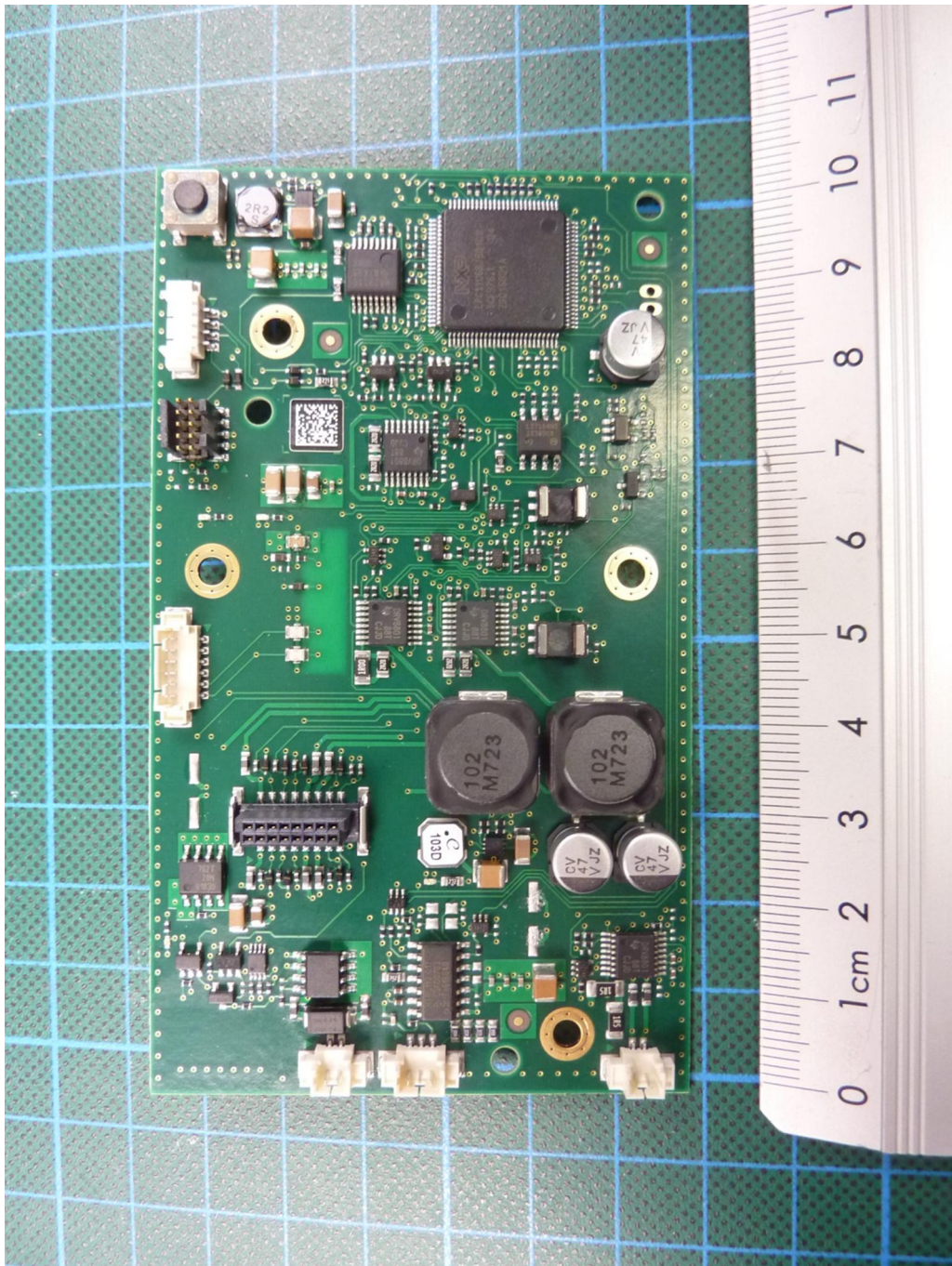
**Annex C Internal photographs**



182314\_11.jpg: dosing module, rear cover with main PCB



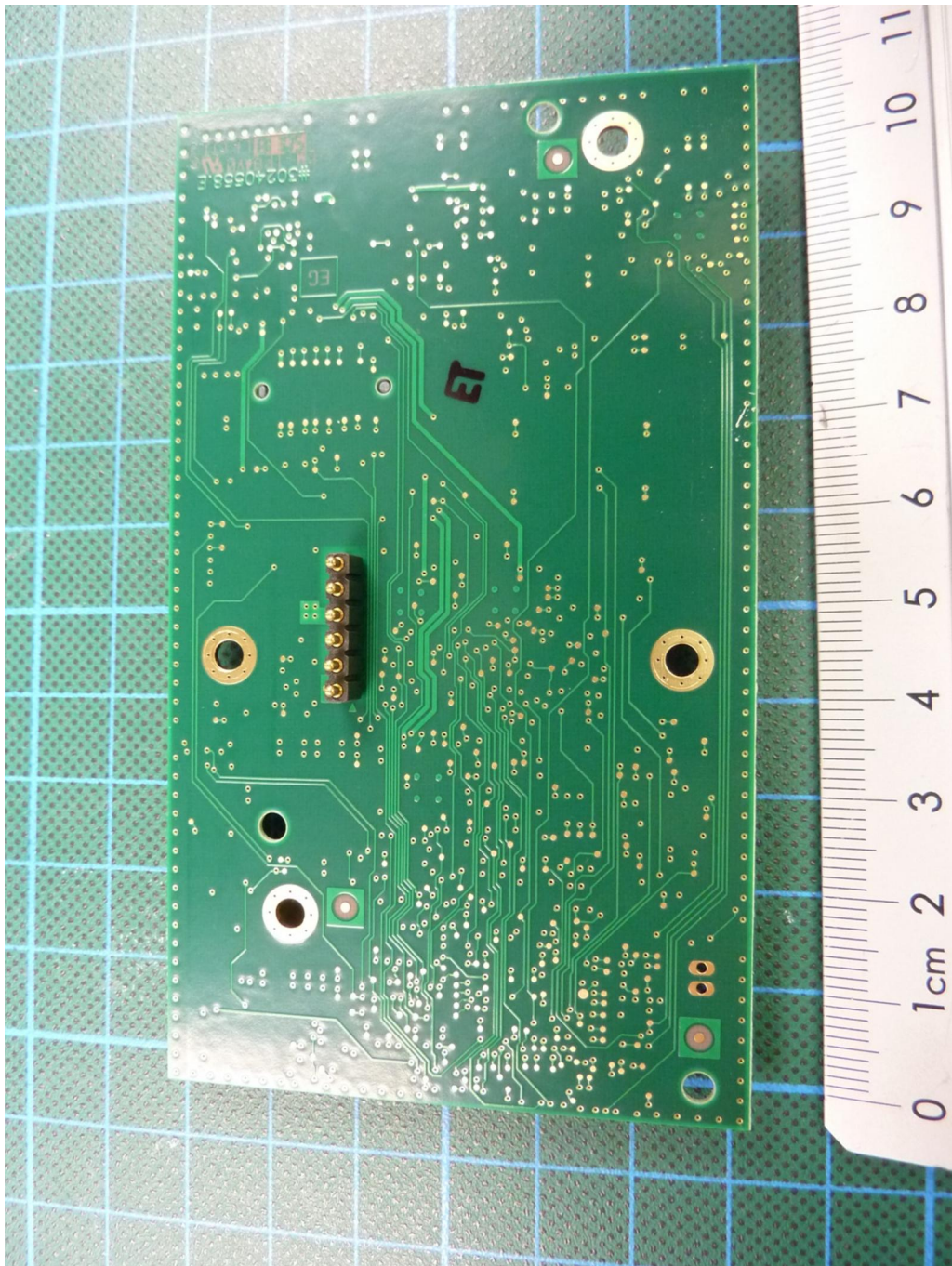
Annex C Internal photographs



182314\_13.jpg: dosing module, main PCB, top view

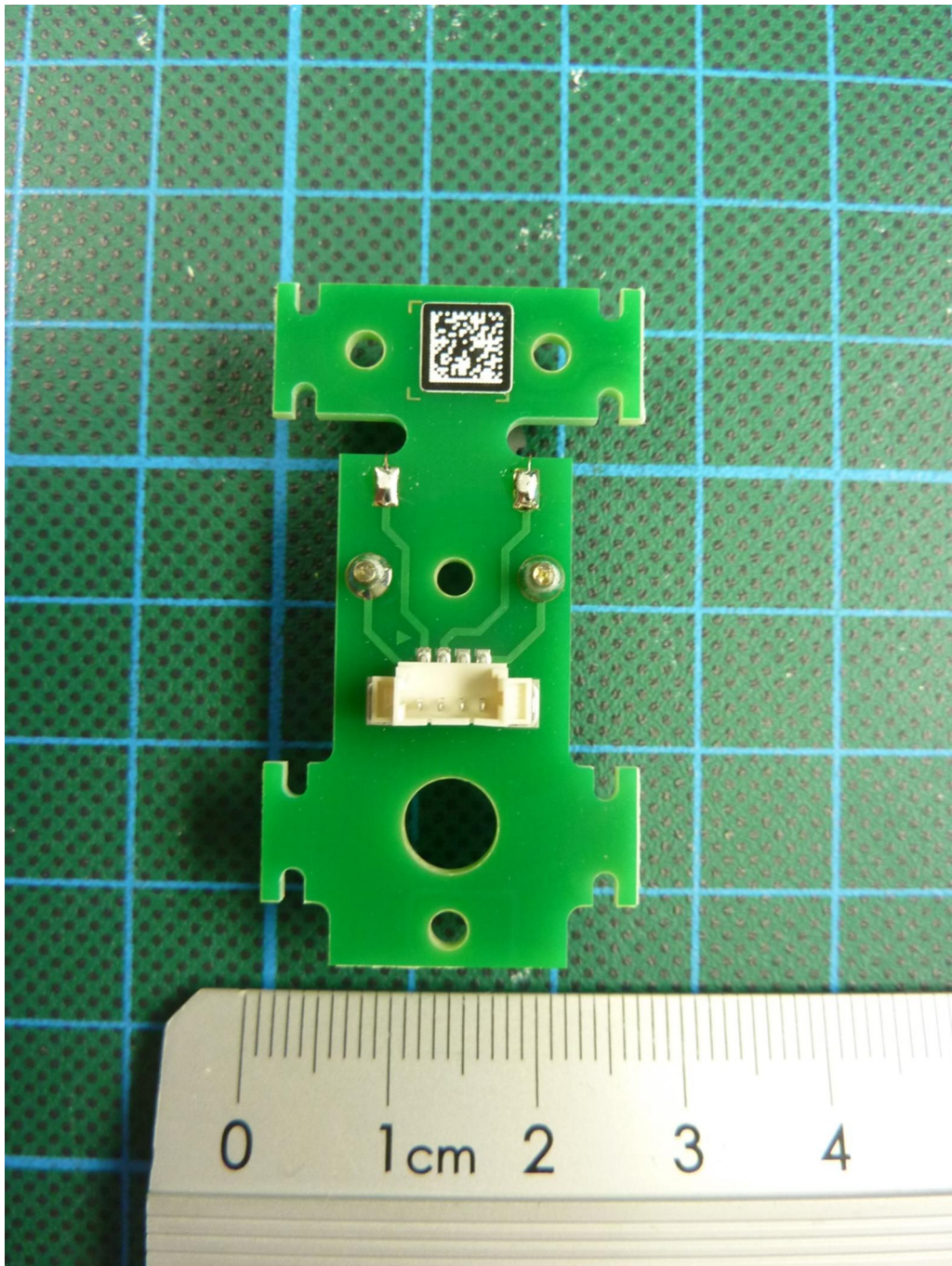


**Annex C Internal photographs**



182314\_14.jpg: dosing module, main PCB, bottom view

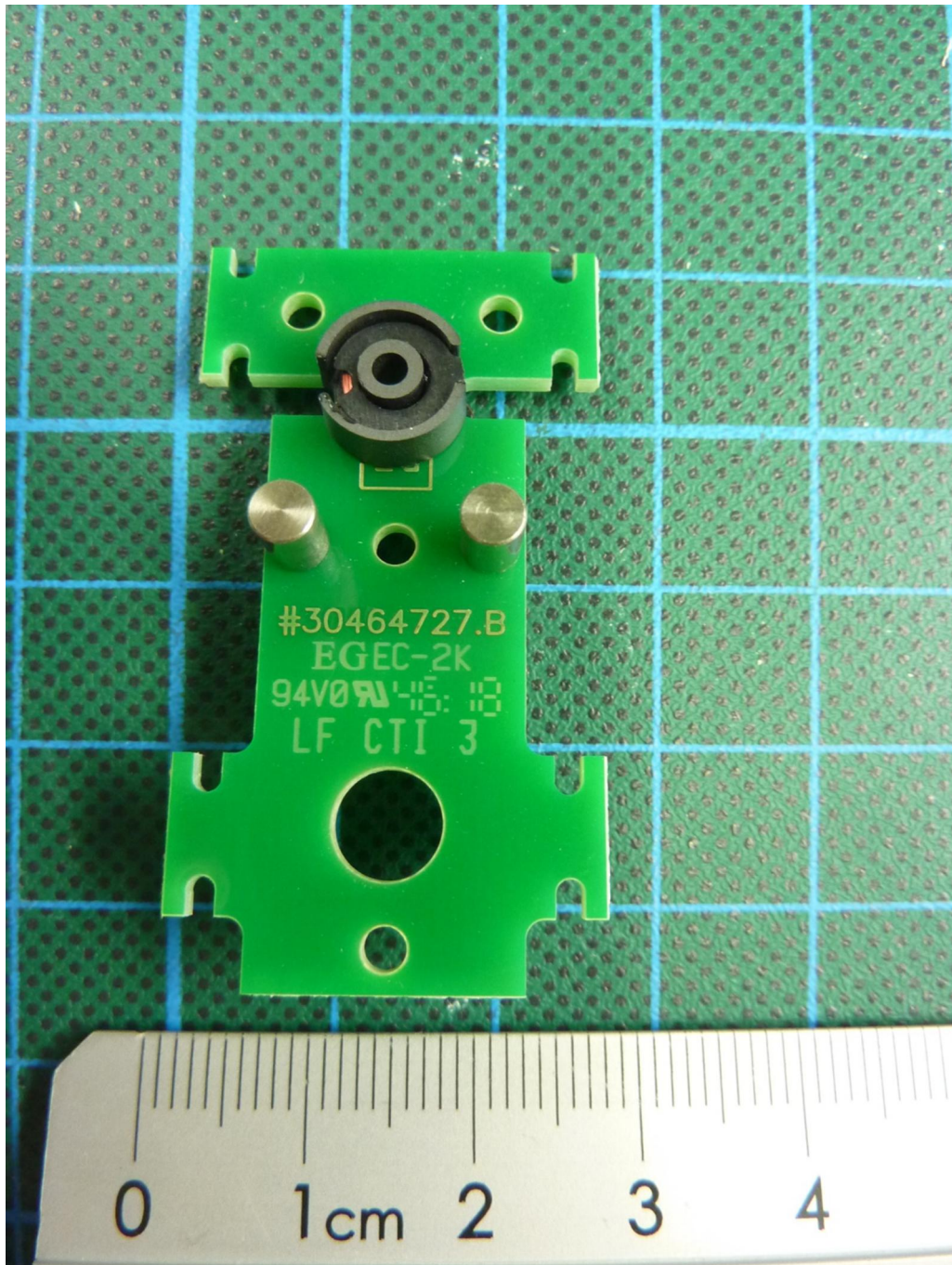
**Annex C Internal photographs**



182314\_15.jpg: dosing module, antenna PCB, top view

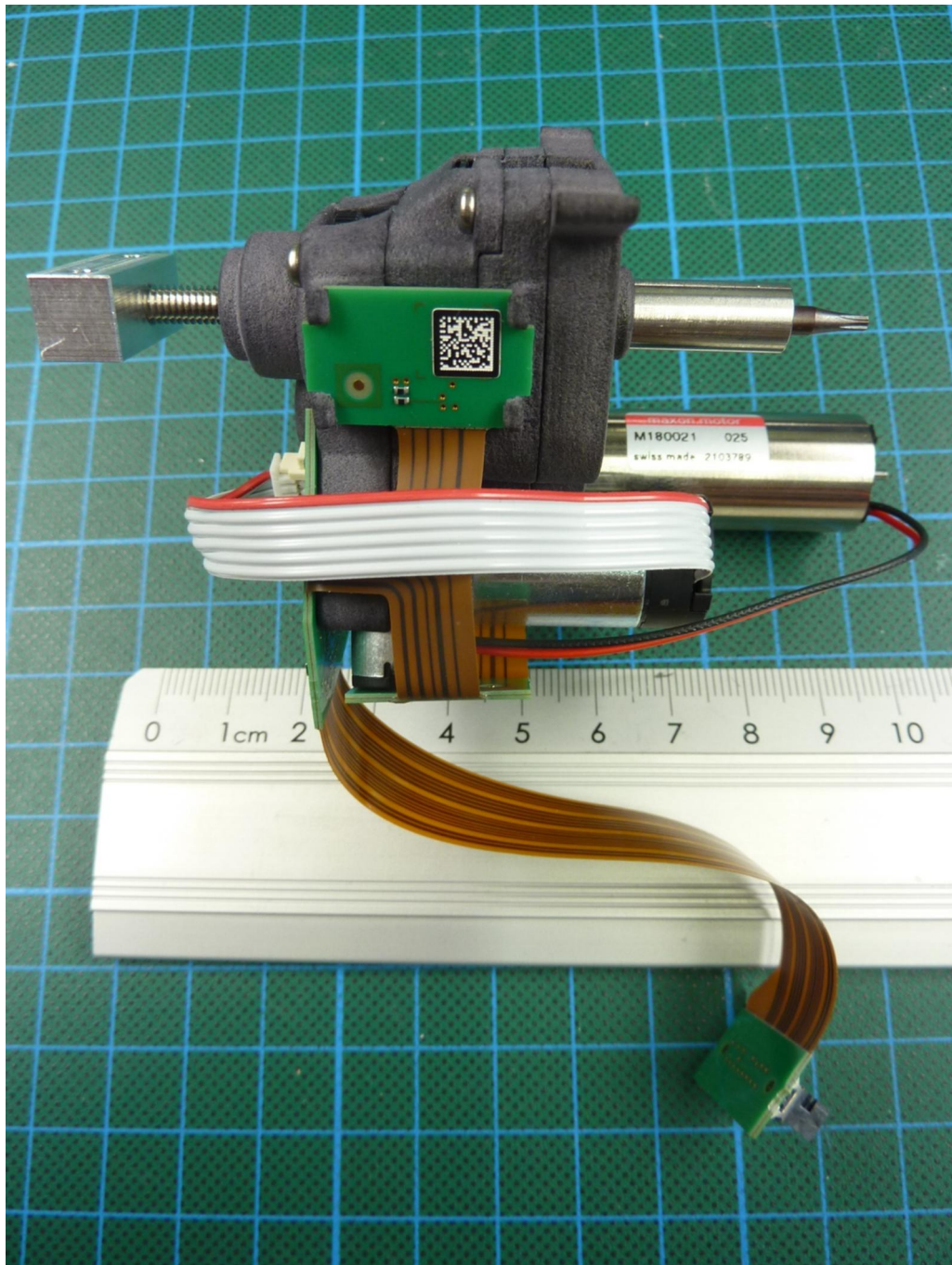


Annex C Internal photographs



182314\_16.jpg: dosing module, antenna PCB, bottom view

**Annex C Internal photographs**



182314\_18.jpg: dosing module, dosing mechanic