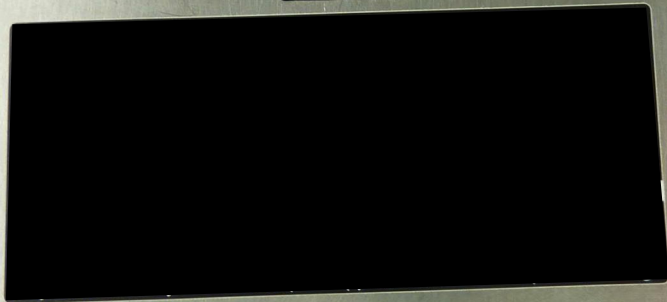


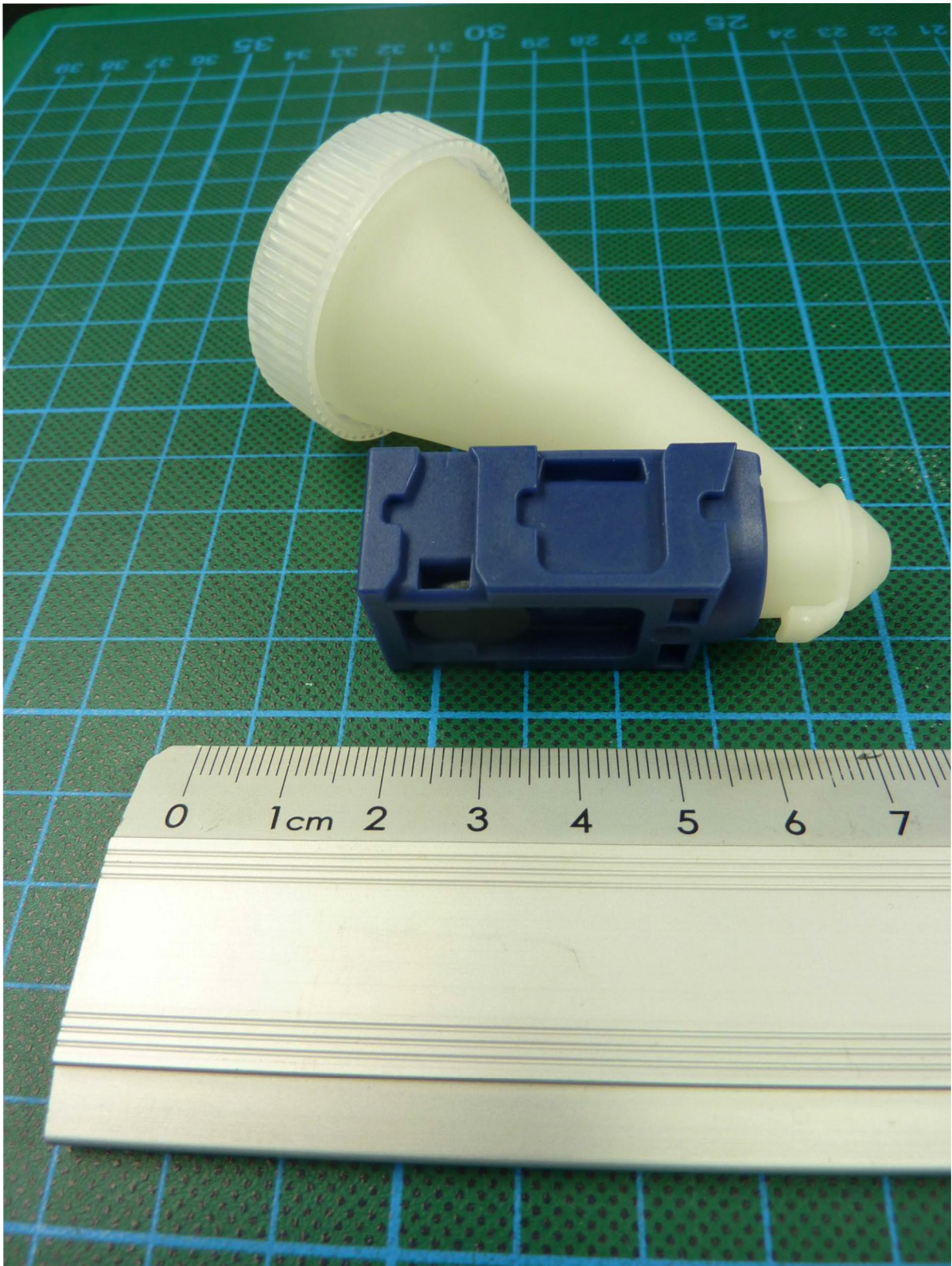
This device complies with Part 15 of the FCC Rules. Operation is subject to the following two conditions: (1) this device may not cause harmful interference, and (2) this device must accept any interference received, including interference that may cause undesired operation.

CAN ICES-3 (A)/NMB-3(A)



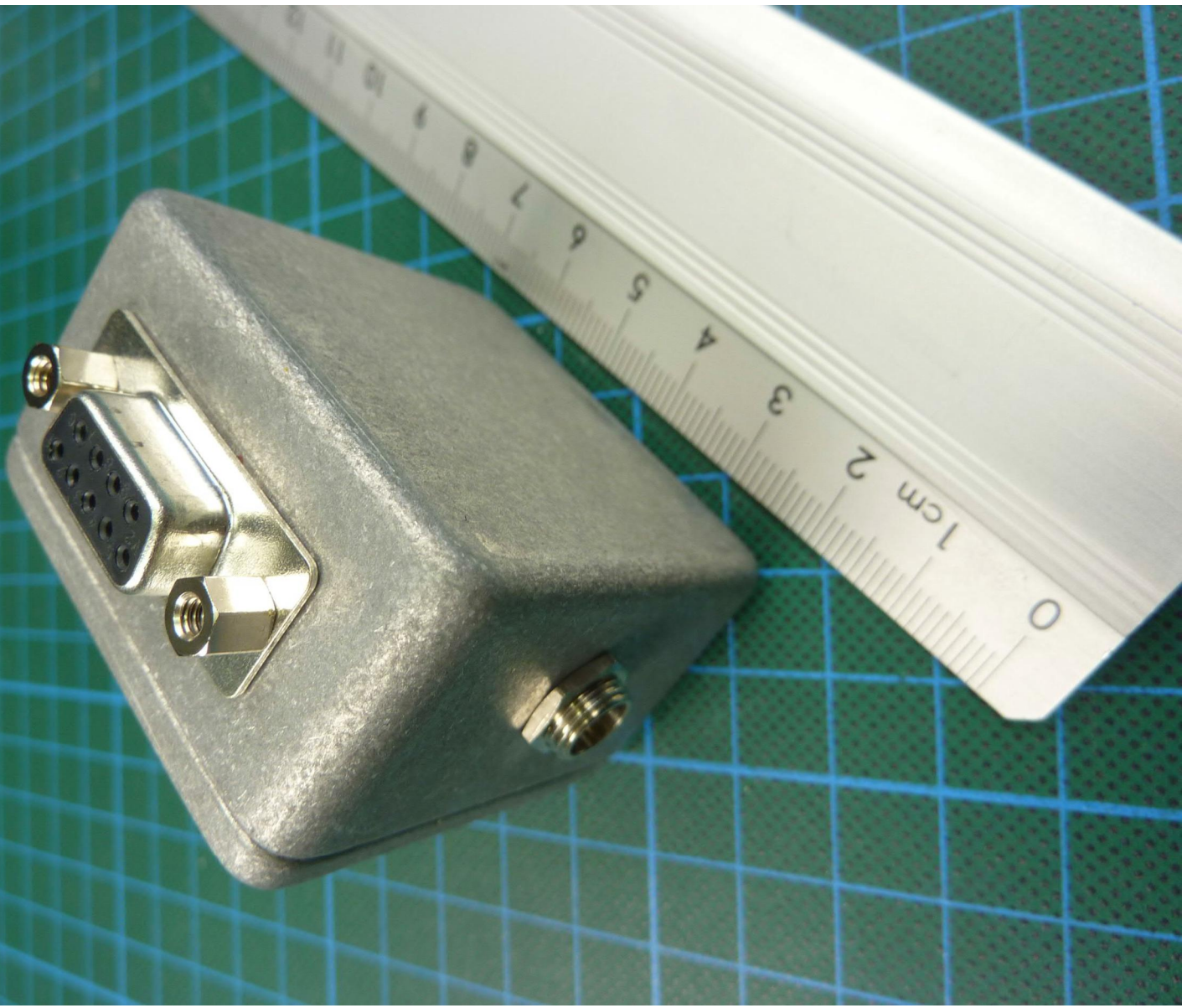
17 18 19 20 21 22 23 24 25 26 27 28 29 30 31 32

Office DEPOT® cm



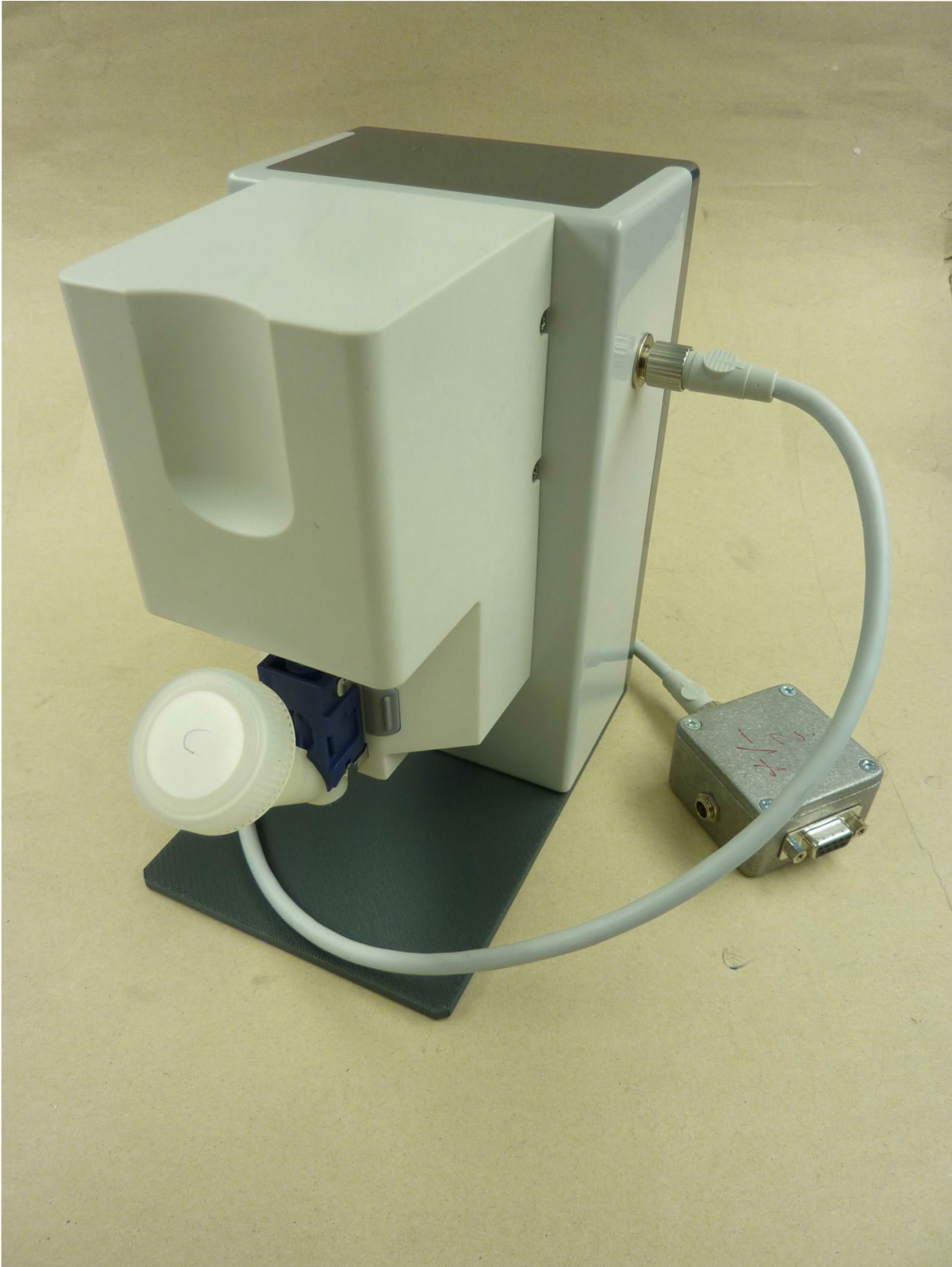














全漢企業股份有限公司  
全漢企業股份有限公司

## Switching Power Adapter

電源供應器/電源适配器/직류전원장치

MODEL NO. 型號/型号: FSP060-DIBAN2

Order No.: 30366307 9NA06053CW

AC INPUT 輸入/ 입력: 100-240V~, 1.5A 50-60Hz

DC OUTPUT 輸出/ 출력: 12.0V  $\pm$  5.0A MAX



### CAUTION / 警告/ 주의사항/ Attention/Achtung

For indoor use only.

For use with information Technology Equipment.

室內使用・適用於資訊類產品

戶內使用・適用於資訊類產品

본 제품은 실내용이며, IT제품에 사용하십시오.

Nur innerhalb von Gebäuden benutzen.

Nur zur Verwendung mit informationstechnischen Einrichtungen.

para uso em equipamentos de

tecnologia informática somente.

Conque uniquement pour un usage intérieur.

Pour les équipements de traitement de l'information.



Protective earth for EMC only  
Schutzleiter ohne Schutzfunktion(EMV)



www.fsp.com  
ID: 1000000000



I.T.E. POWER SUPPLY  
L.P.S.  
E190414

직류전원장치

HU10142-14110

MSIP-REM-FSZ-FSP060-DIBAN2

A/S :0505-525-1488

제조국: Zhonghan Electronics(Shenzhen) Co., Ltd.

제조국가: 중국 최저소비효율기준 만족제품

EFFICIENCY LEVEL: VI RoHS

Made in China 中國製造/ 中國製造

6LL1842601GP YL