



161791eut1.jpg: Host (Excellence Titrator T9), 3D-view 1



Annex B

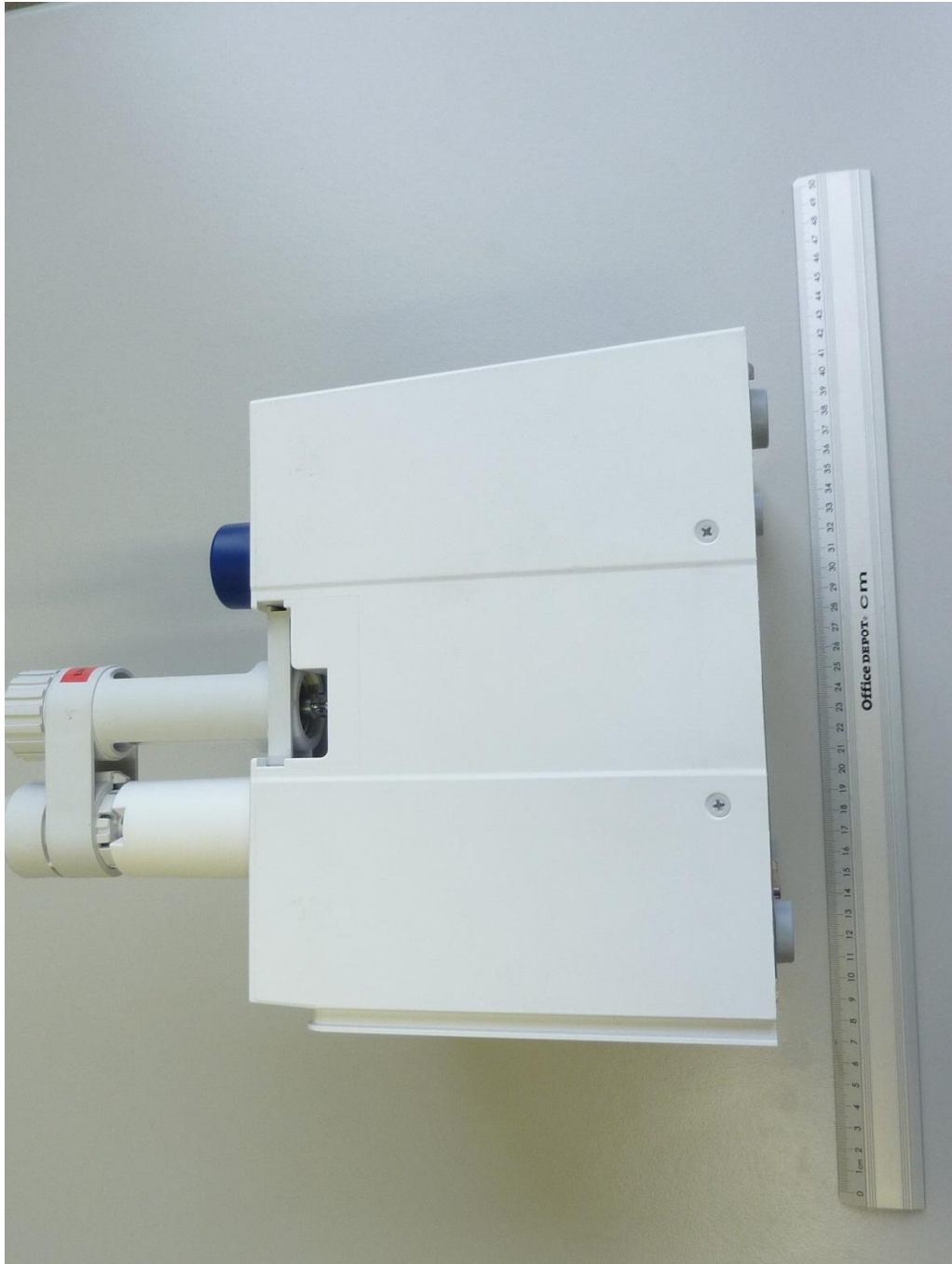
External photos



161791eut3.jpg: Host (Excellence Titrator T9), top view

Annex B

External photos



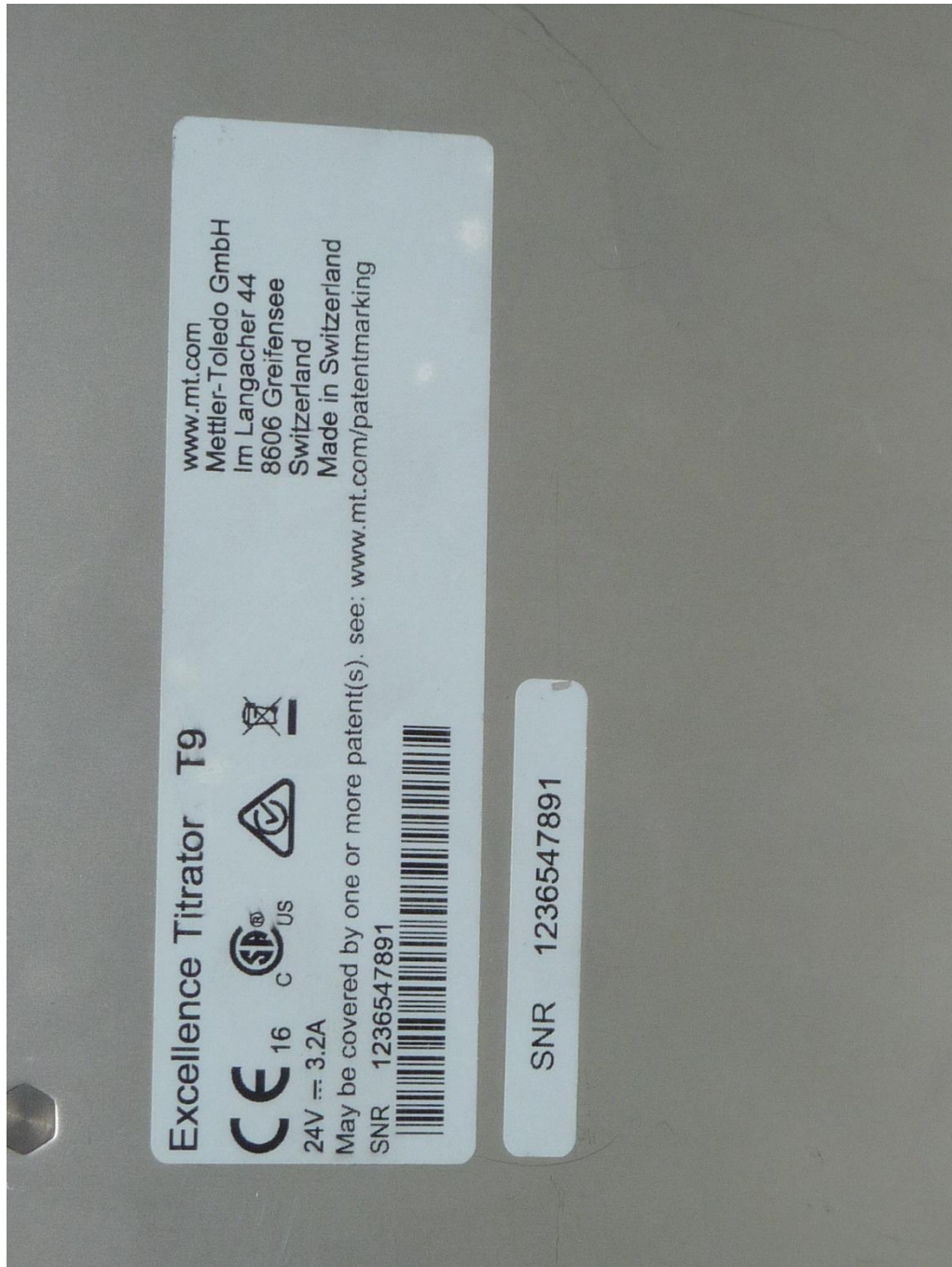
161791eut4.jpg: Host (Excellence Titrator T9), side view

Annex B

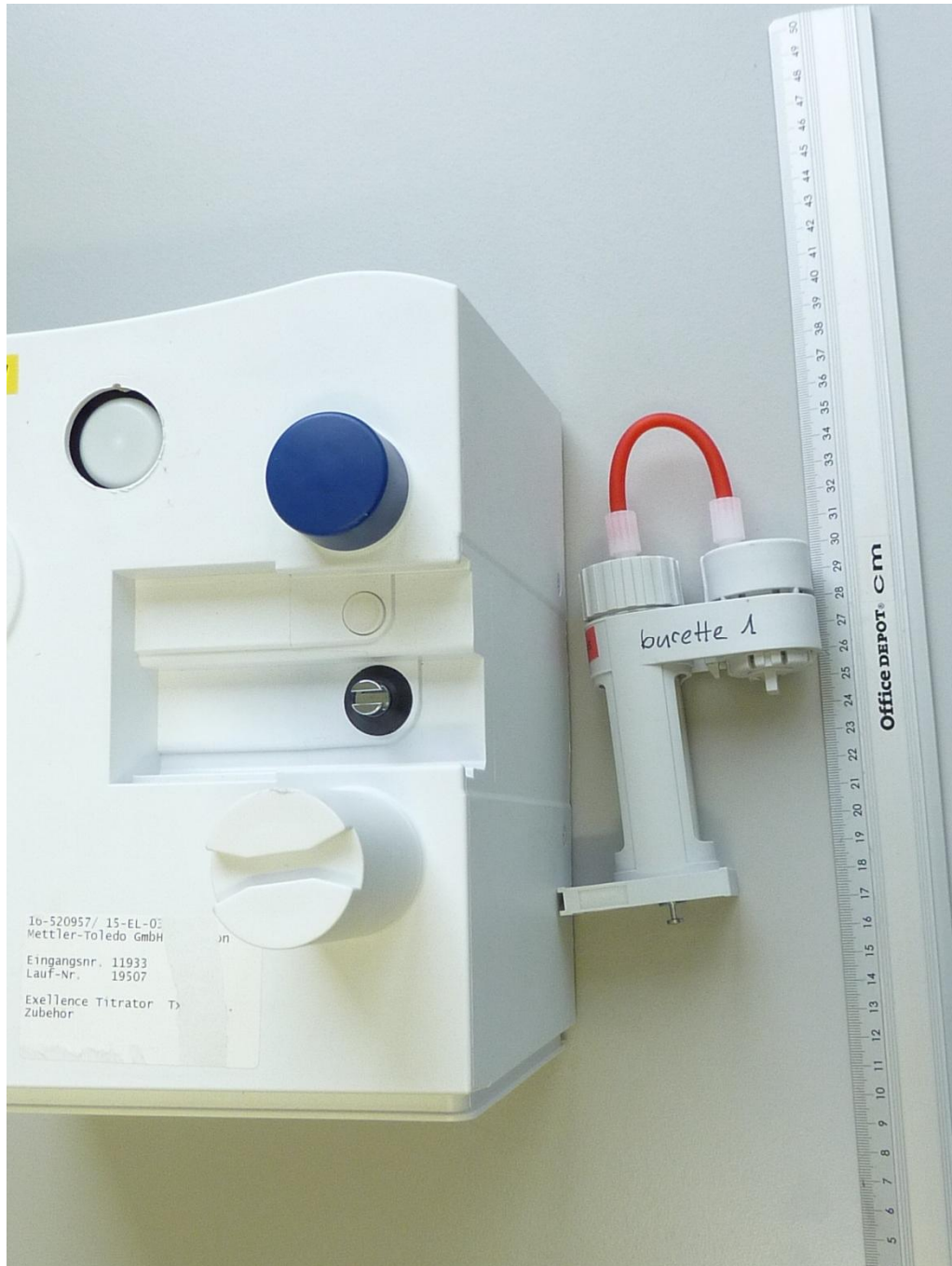
External photos



161791eut5.jpg: Host (Excellence Titrator T9), bottom view



161791eut6.jpg: Host (Excellence Titrator T9), type plate view



161791eut7.jpg: Host (Excellence Titrator T9), top view, burette removed

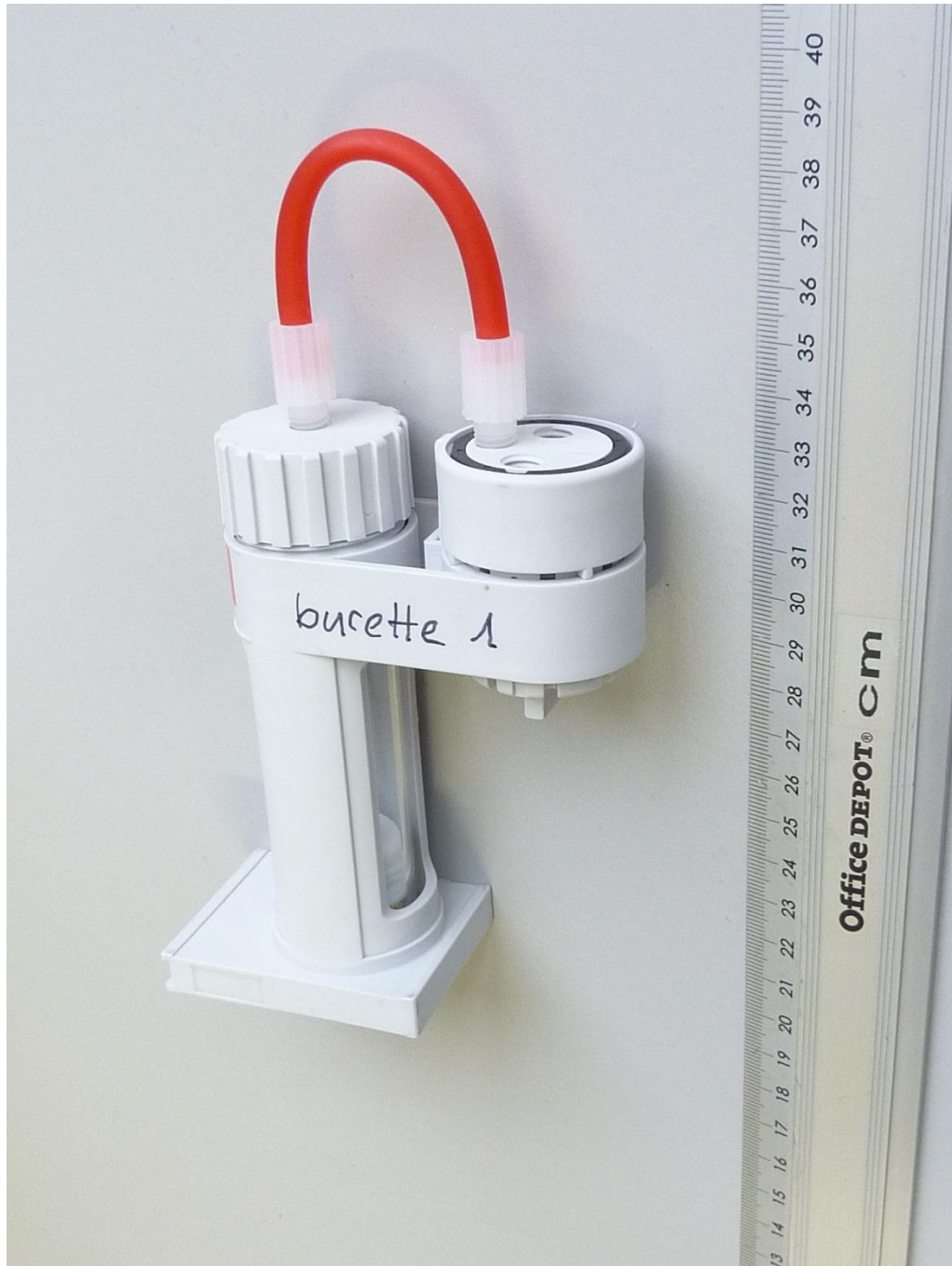
Annex B

External photos



161791eut8.jpg: Burette (with TAG), 3D-view 1





161791eut9.jpg: Burette (with TAG), 3D-view 2

Annex B

External photos



161791eut10.jpg: Type plate of dedicated AC/DC adaptor



161791eut11.jpg: Terminal, 3D-view 1



161791eut12.jpg: Terminal, 3D-view 2

Annex B

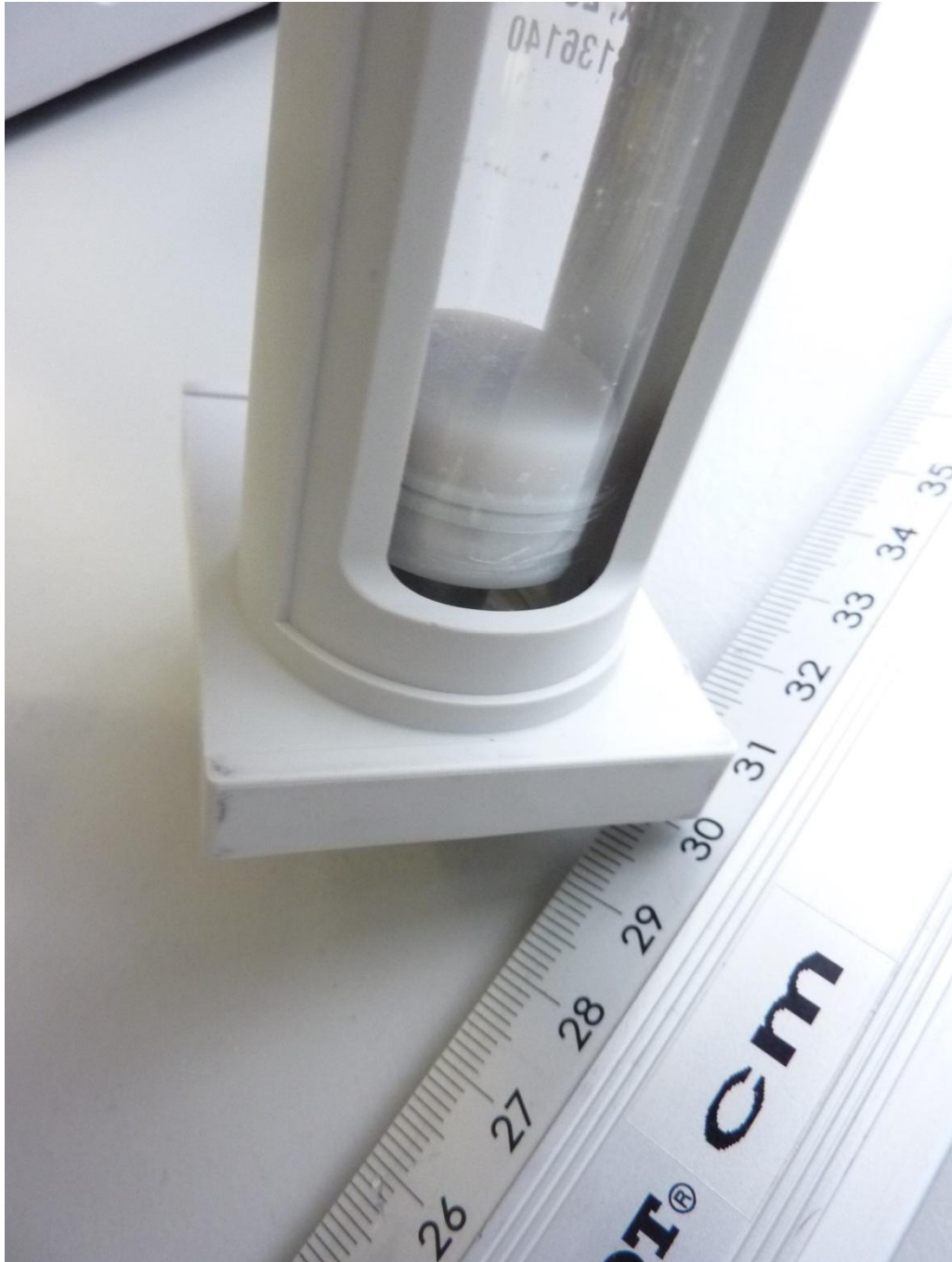
External photos



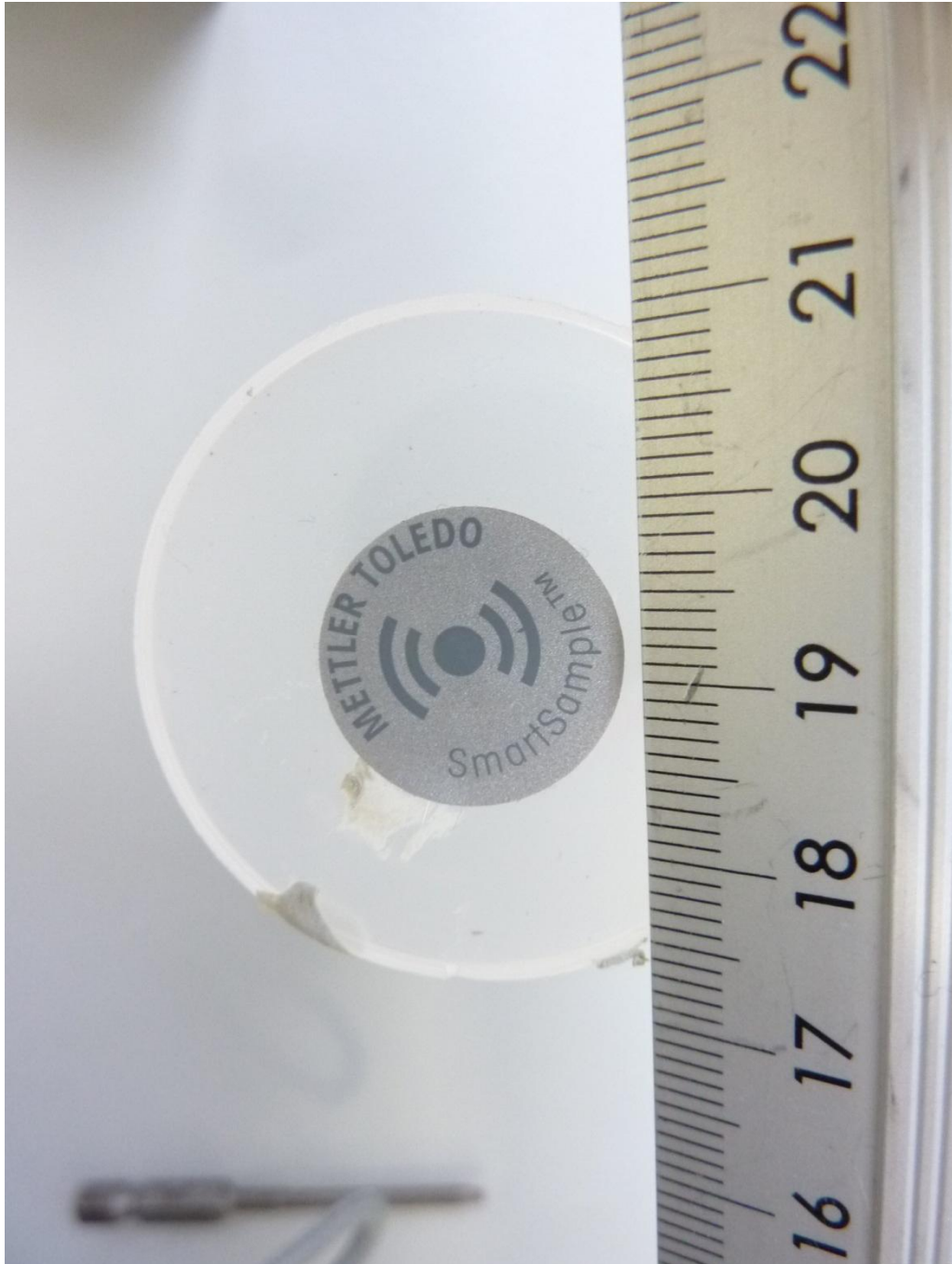
161791eut20.jpg: Burette (with TAG), 3D-view 1

Annex B

External photos



161791eut21.jpg: Burette (with TAG), 3D-view 2



161791eut22.jpg: Measuring cup with 13.56 MHz TAG