



FCC/IC Test Setup Photos

For:
Philips-Respironics

Model Name:
1116426

Product Description:
Continuous Airway Pressure Device with Bluetooth Radio (BDE/EDR) and LTE CAT M1 Modem
sends and receives data on Bands 2, 4, 5, 12

FCC ID: THO1116426
IC ID: 3234B-1116426

Cellular module FCC ID: XPY2AGQN4NNN
Cellular module IC ID: 8595A-2AGQN4NNN

Addition to Report #:
EMC_PHIL4_051_19001_FCC_22_24_27_ISED_ATT_C2PC

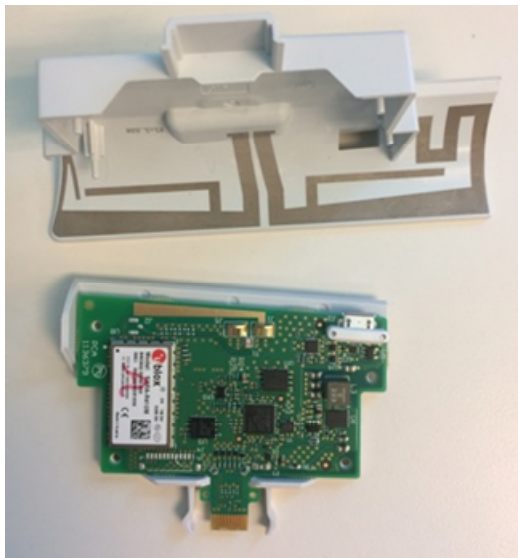
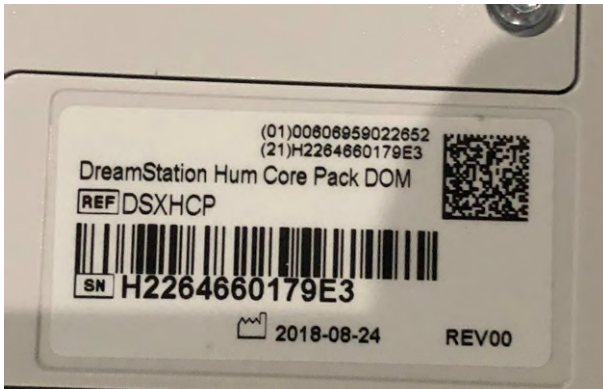
DATE: 6/11/2019

CETECOM Inc.

411 Dixon Landing Road ♦ Milpitas, CA 95035 ♦ U.S.A.

Phone: + 1 (408) 586 6200 ♦ Fax: + 1 (408) 586 6299 ♦ E-mail: info@cetecom.com ♦ <http://www.cetecom.com>
CETECOM Inc. is a Delaware Corporation with Corporation number: 2905571

EUT Photos

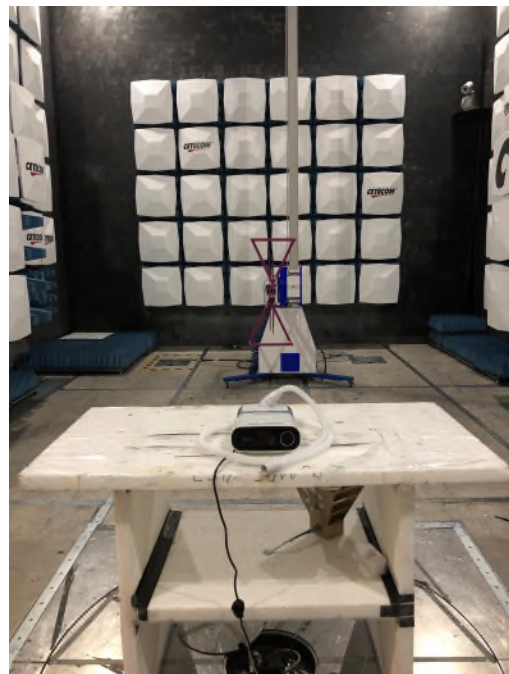


Radiated Measurements

9 KHz to 30 MHz



30 MHz to 1 GHz



1 GHz to 3 GHz



3 GHz to 18 GHz



18 GHz to 26 GHz



- **Revision History**

Date	Report Name	Changes to report	Report prepared by
6/11/2019	EMC_PHIL4_051_19001_FCC_ISED_Setup_Photos	Initial Version	Issa Ghanma