

Test Setup Photographs

Manufacturer: Philips Respironics Inc.

Philips Dream Station - Continuous Airway Pressure Device with Bluetooth Radio (limited single modular approval of the Bluetooth modular transmitter)

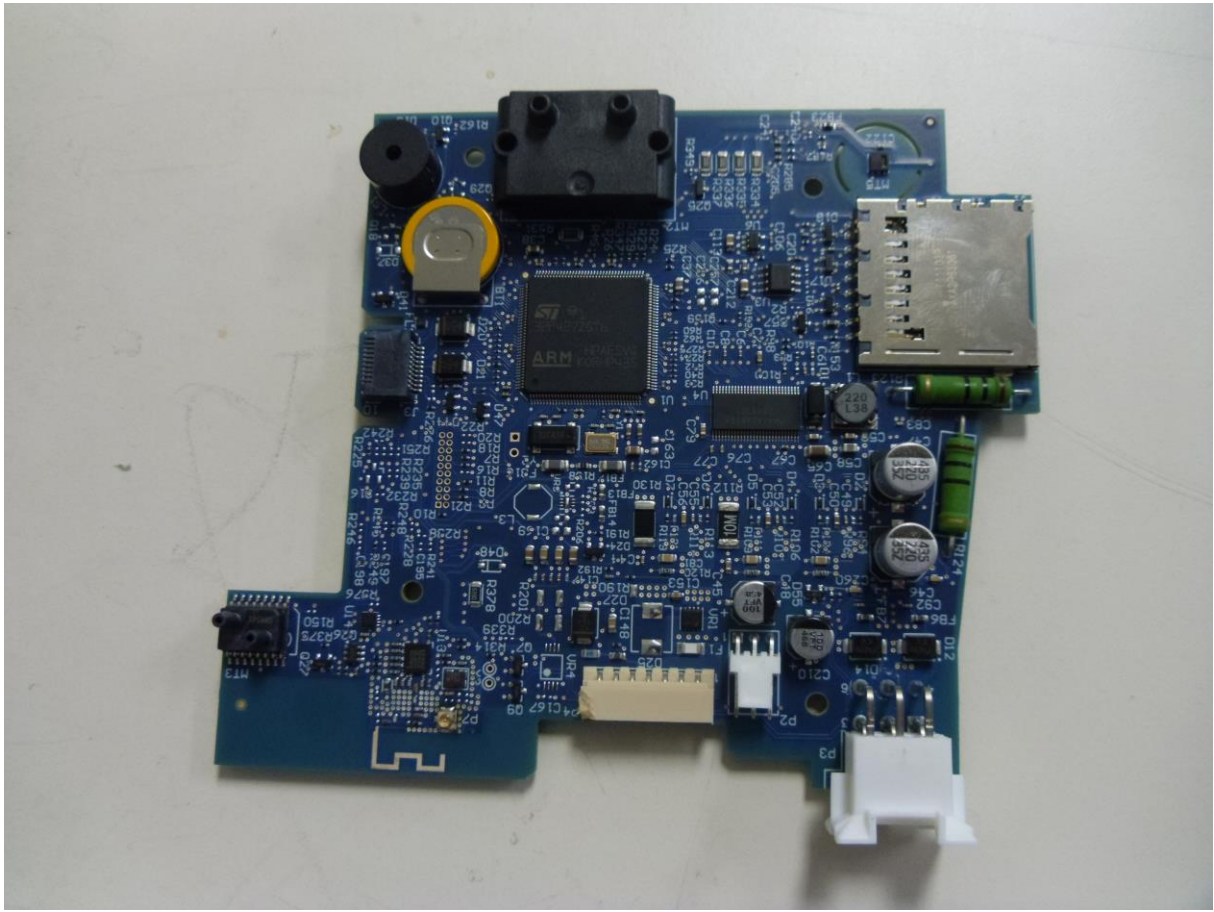
FCC ID: THO1116426

IC ID: 3234B-1116426

Test Site Information:

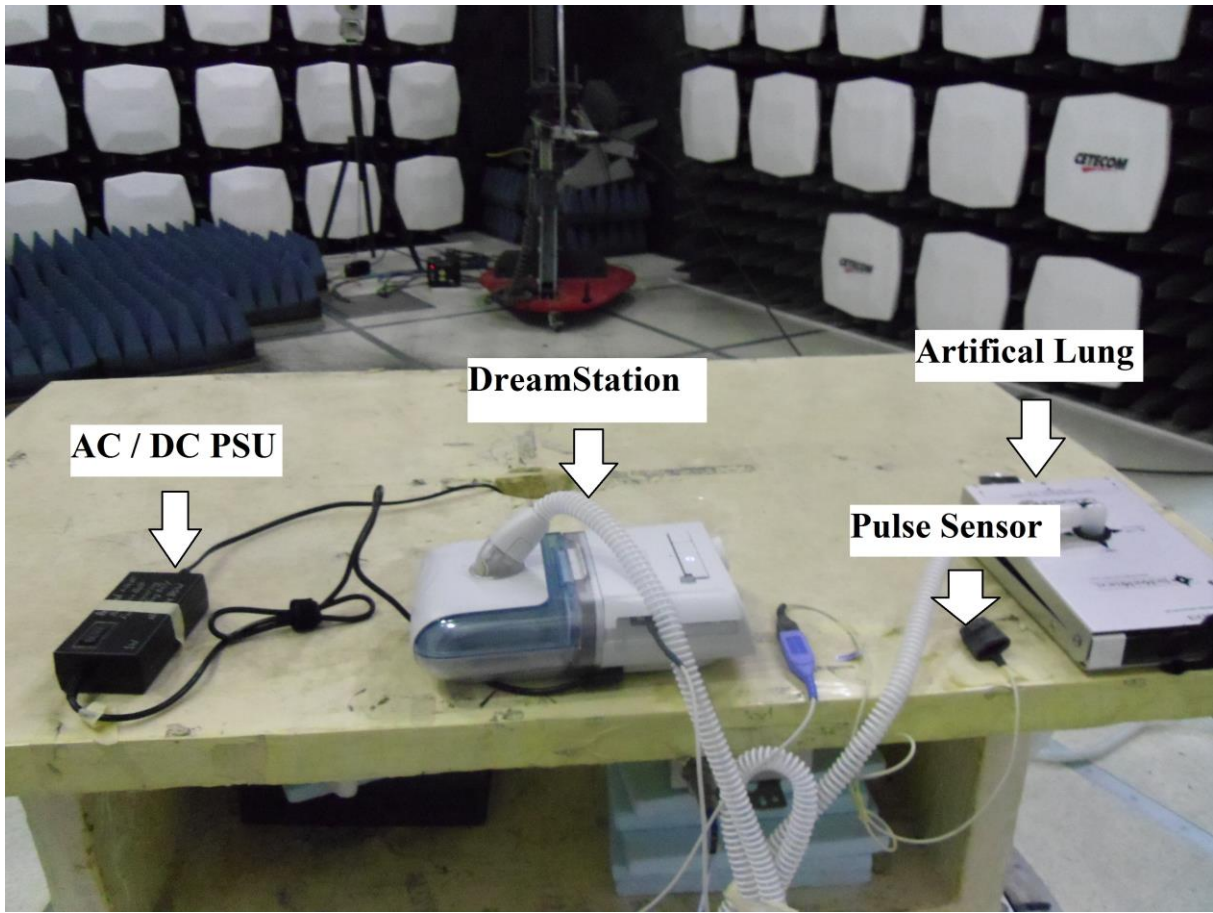
CETECOM Inc. Milpitas, CA USA

Bluetooth Module on main PCB Board

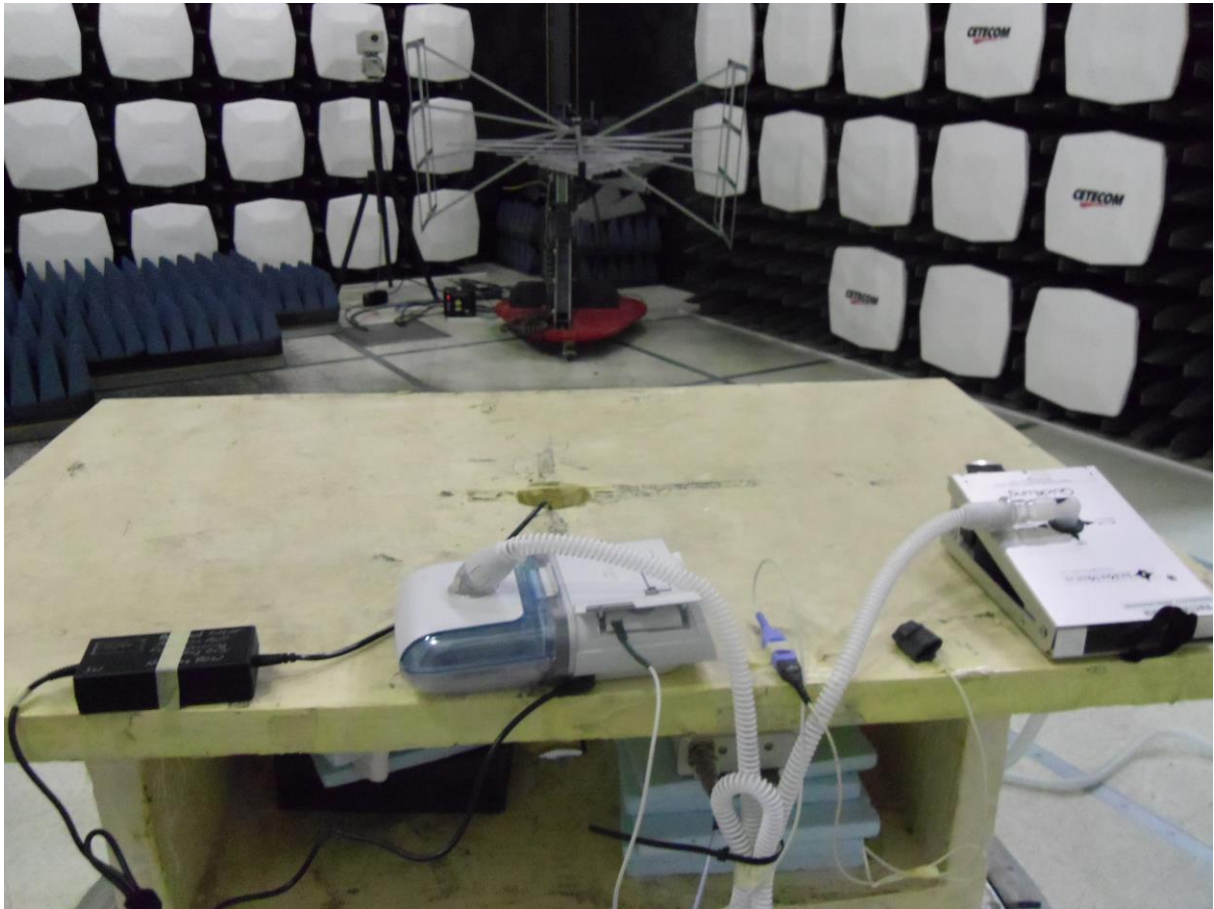


Radiated Emissions Test Setup:

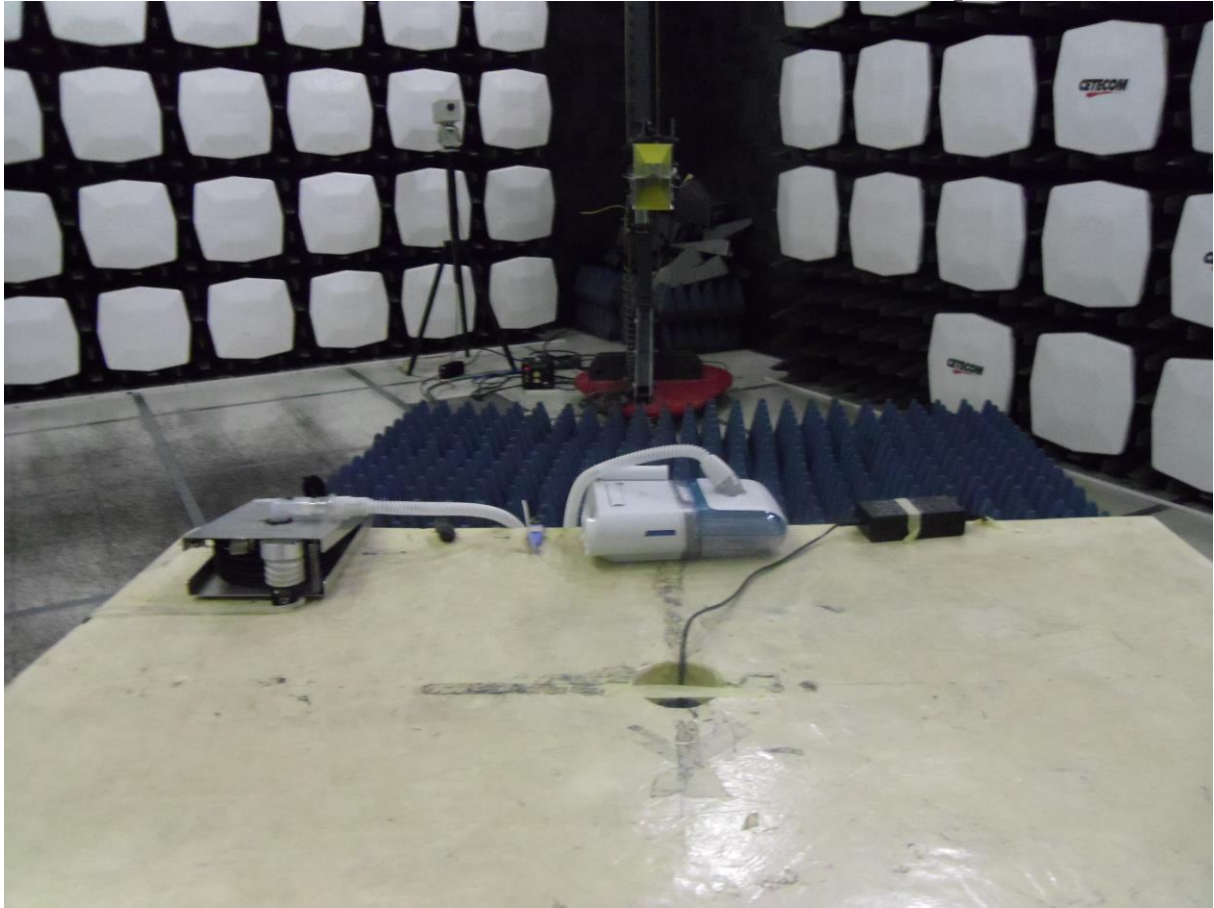
Radiated Emissions 9 KHz- 30 MHz Measurement Setup:



Radiated Emissions 30MHz- 1GHz Measurement Setup:



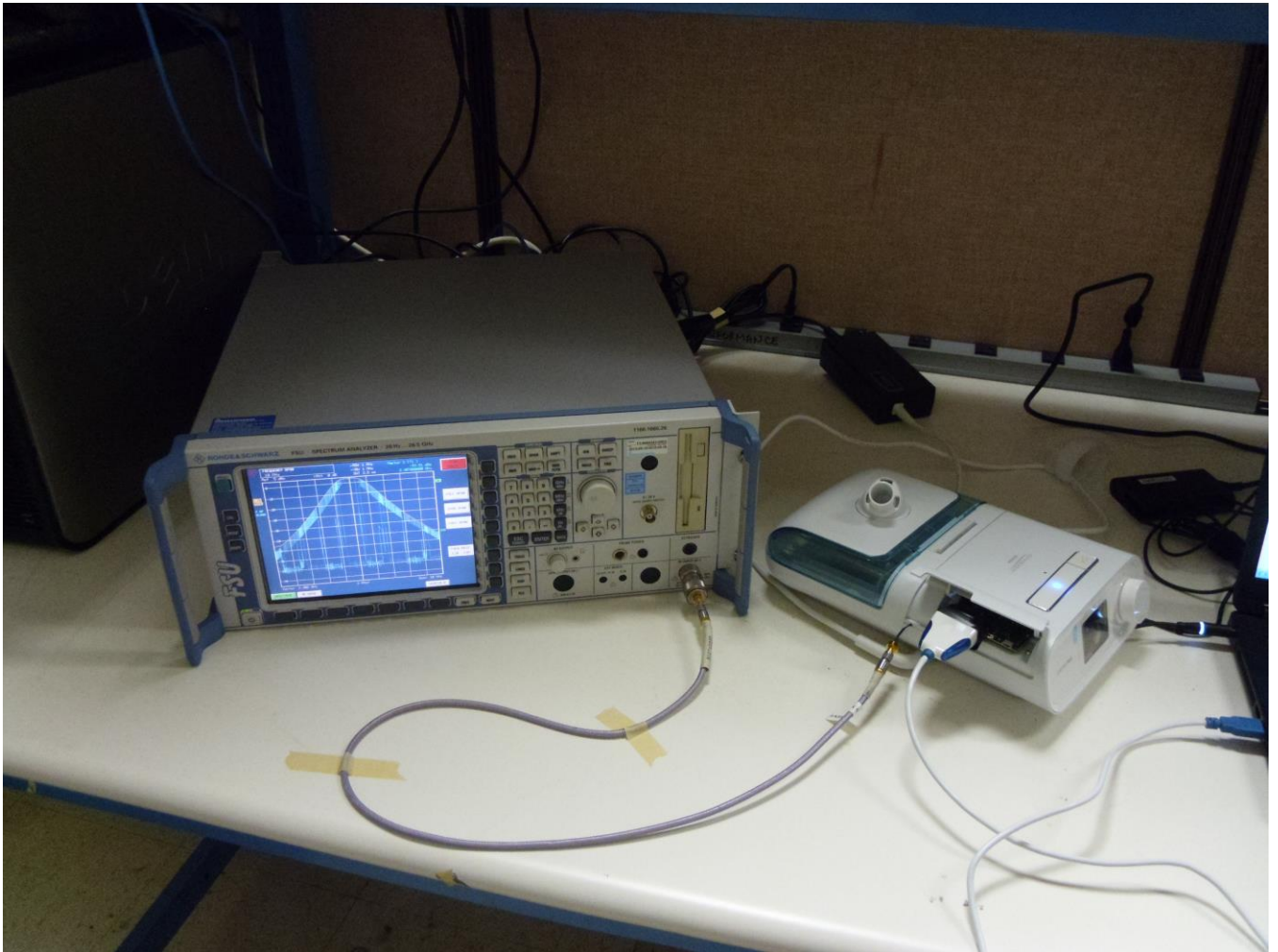
Radiated Emissions Above 1GHz Measurement Setup:



AC Conducted Emissions Test Setup



RF Conducted Measurement Setup



RF Conducted Temperature Chamber Measurement Setup

