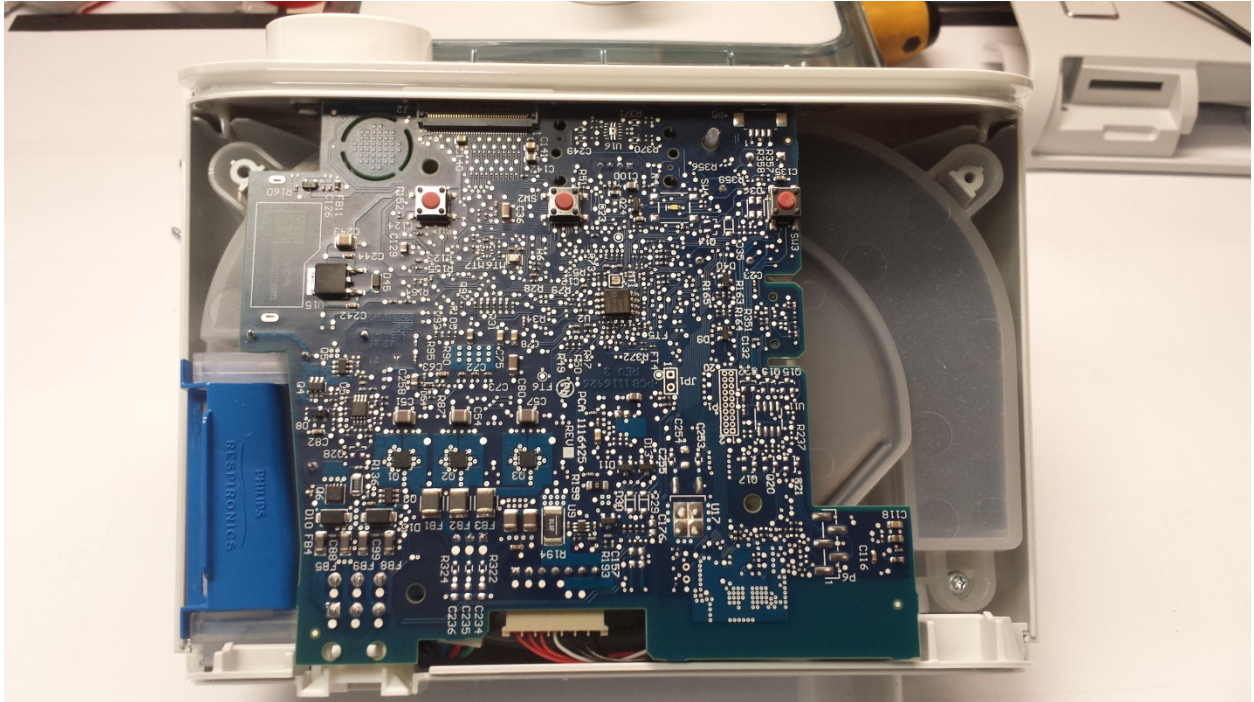
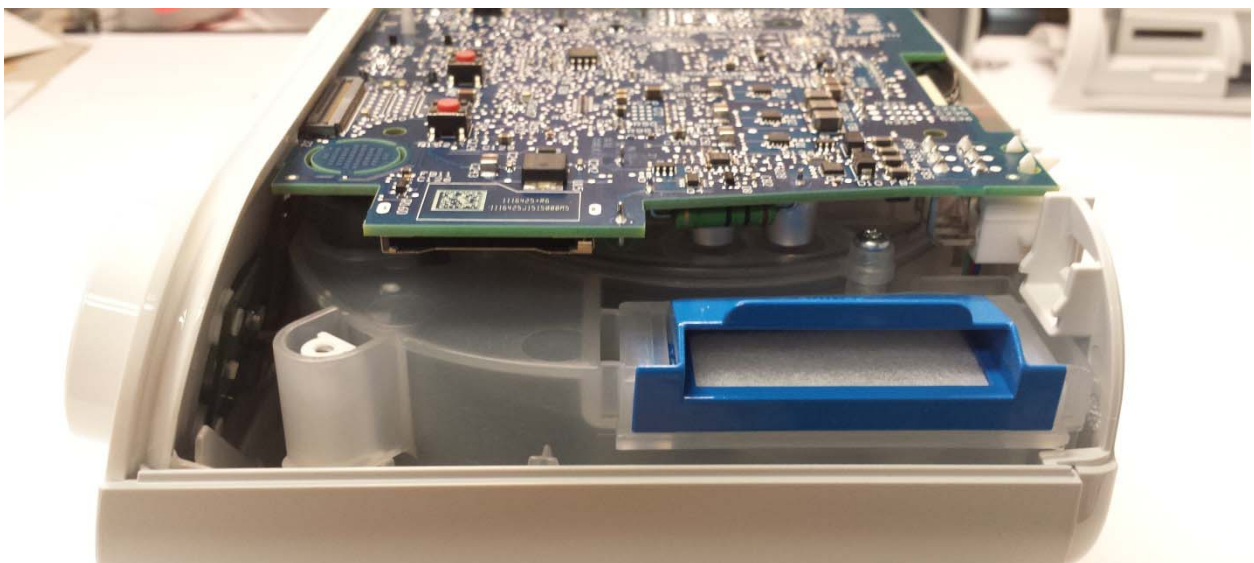


Philips DreamStation – Internal Photographs

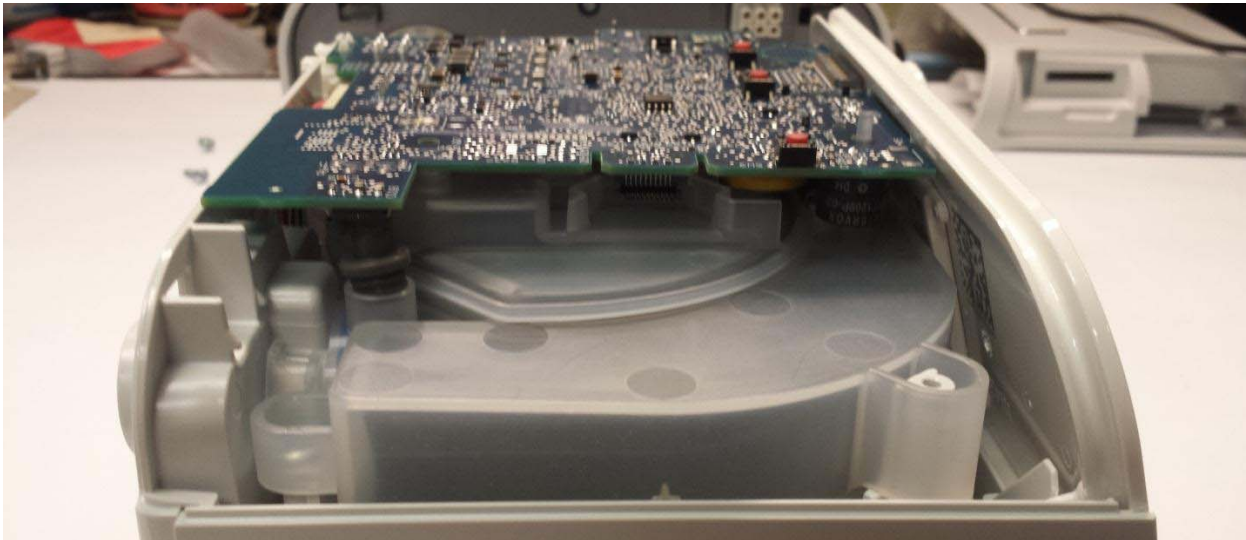
1. Top of PCB with Top Enclosure Removed



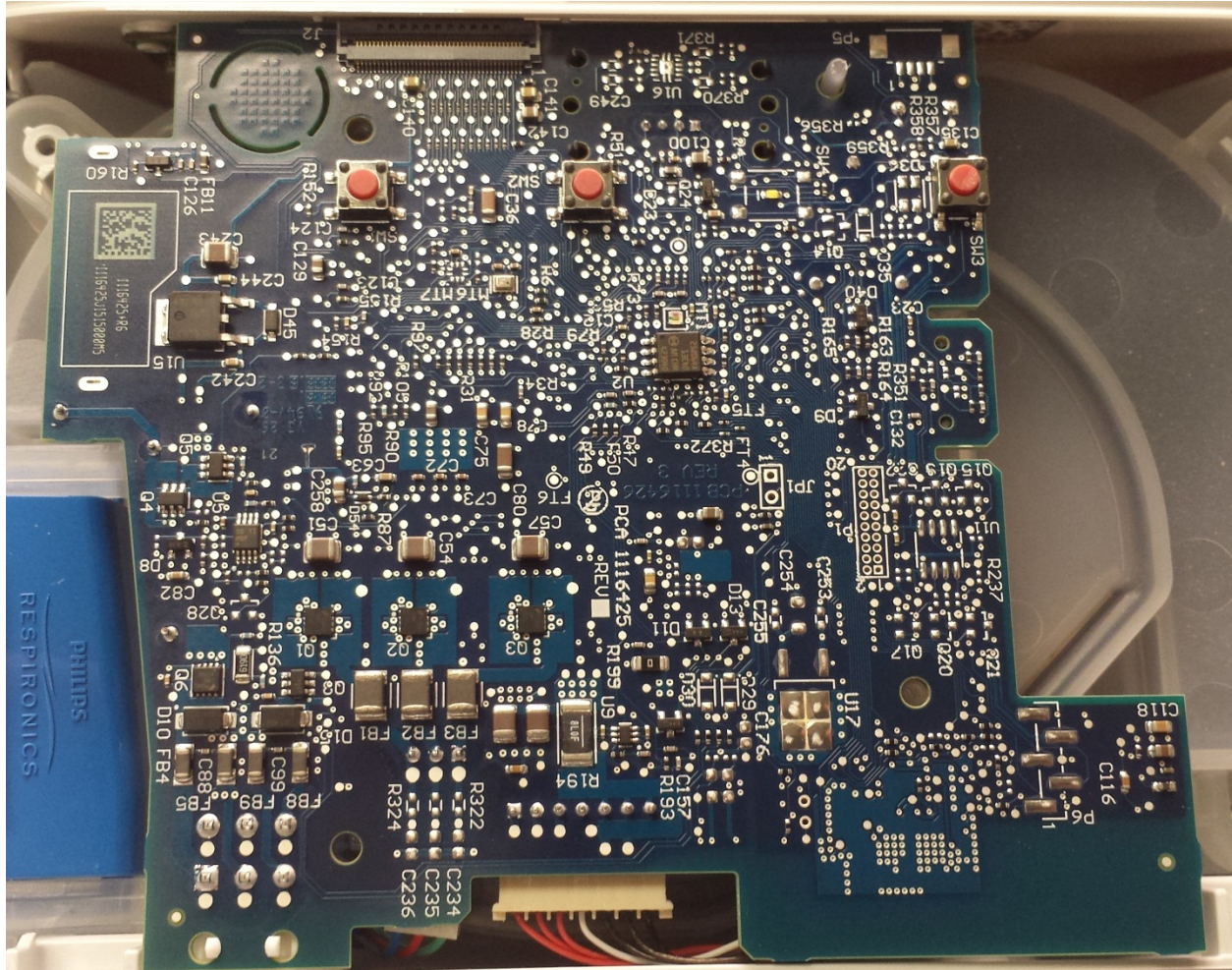
2. Side PCB View – SD Card Connector



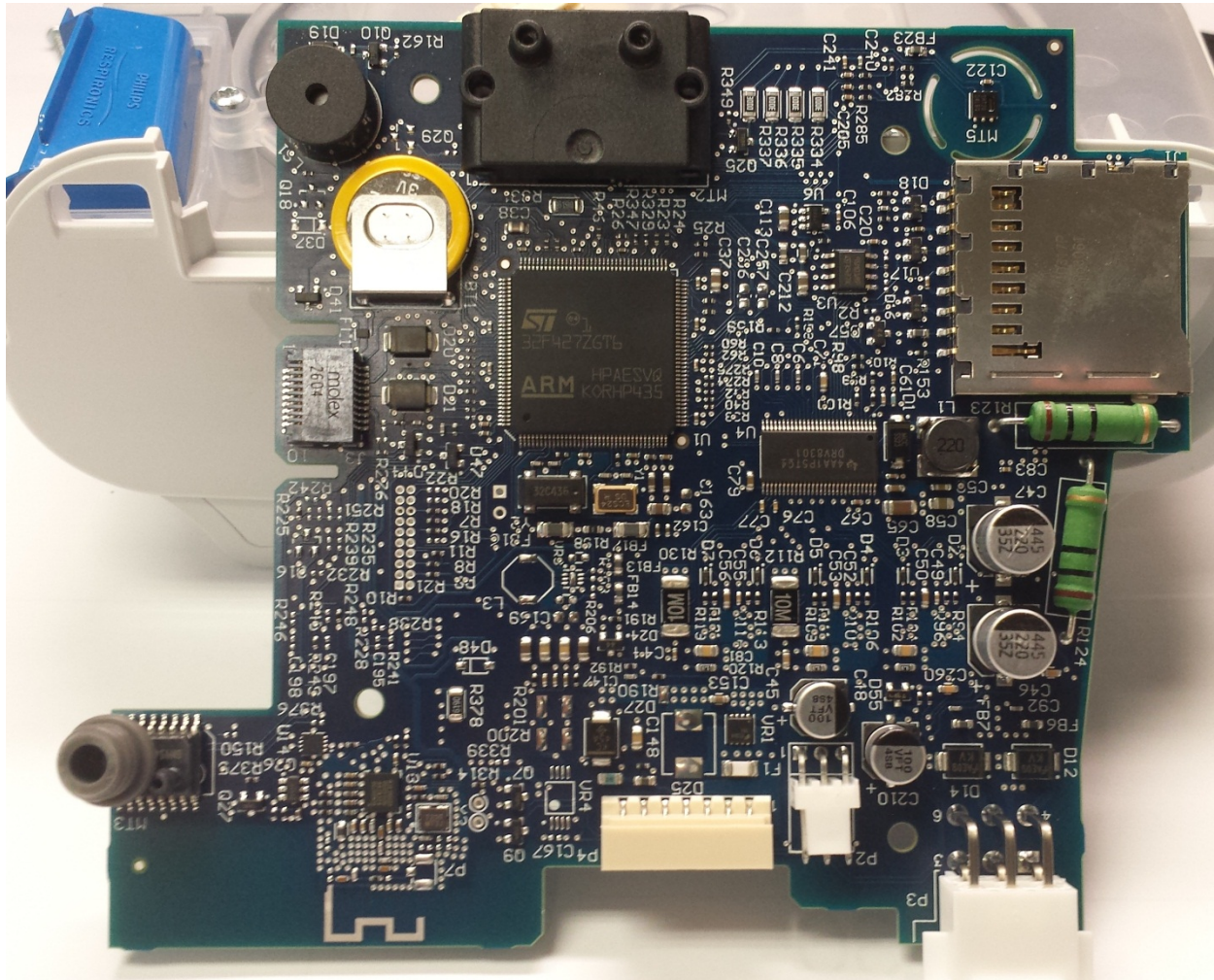
3. Side PCD View – Accessory Connector



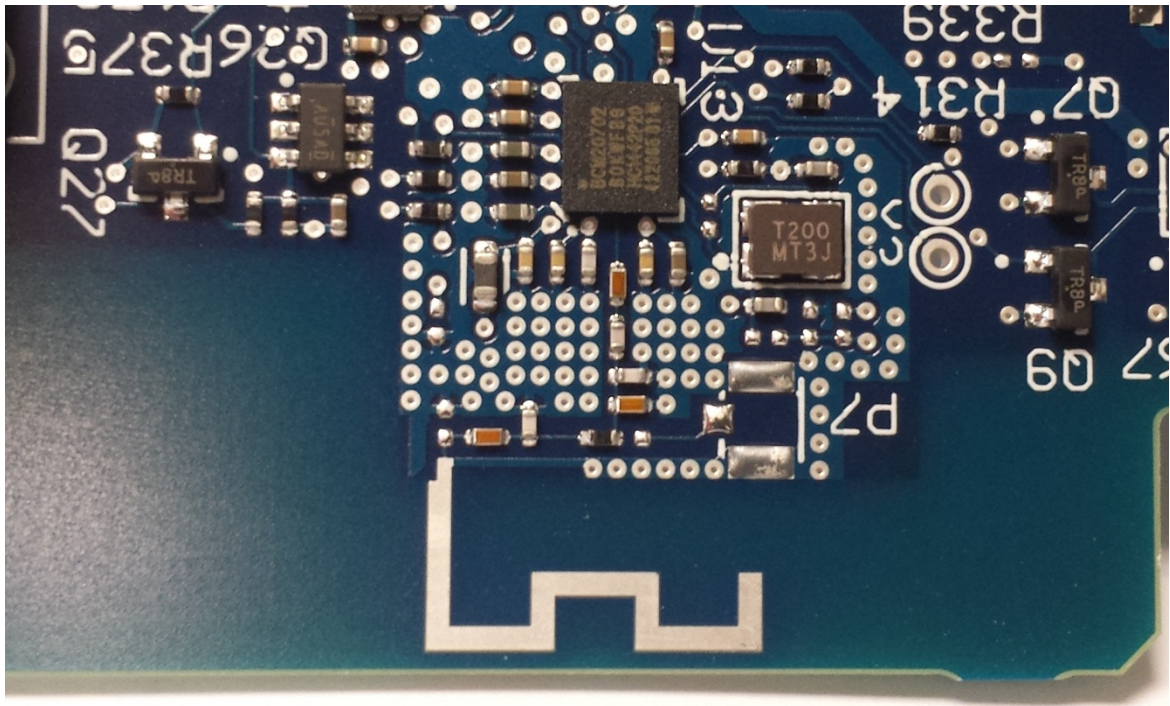
4. PCB Top View – User Interface Push Buttons



5. PCB Bottom View – Bluetooth in Bottom Left of PCB, Accessory Connector Middle-Left



6. PCB Bluetooth Section Bottom— Broadcom chipset, Crystal, Filter, Matching Network, Antenna



7. PCB Bluetooth Section – Top

