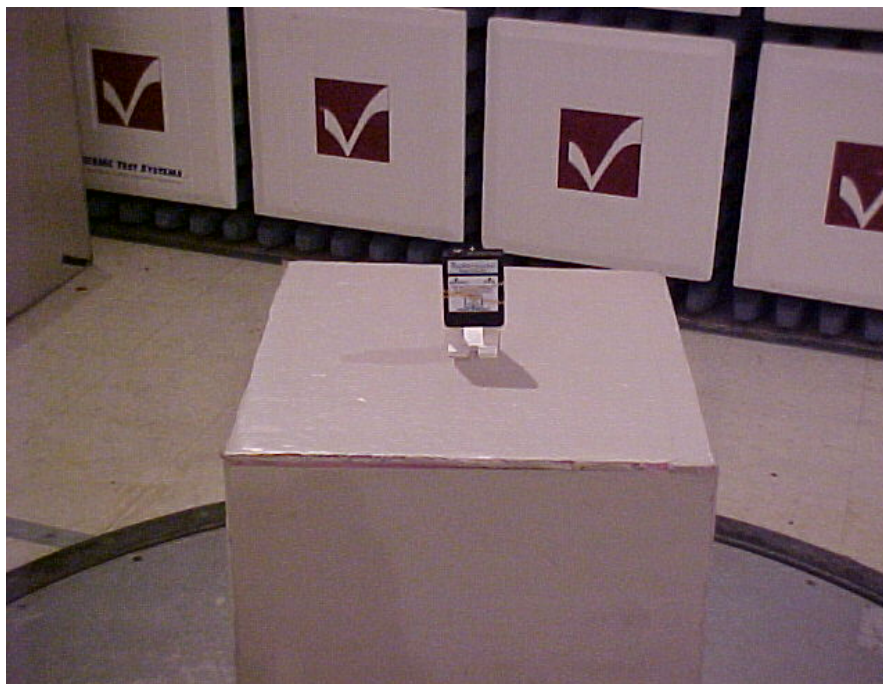
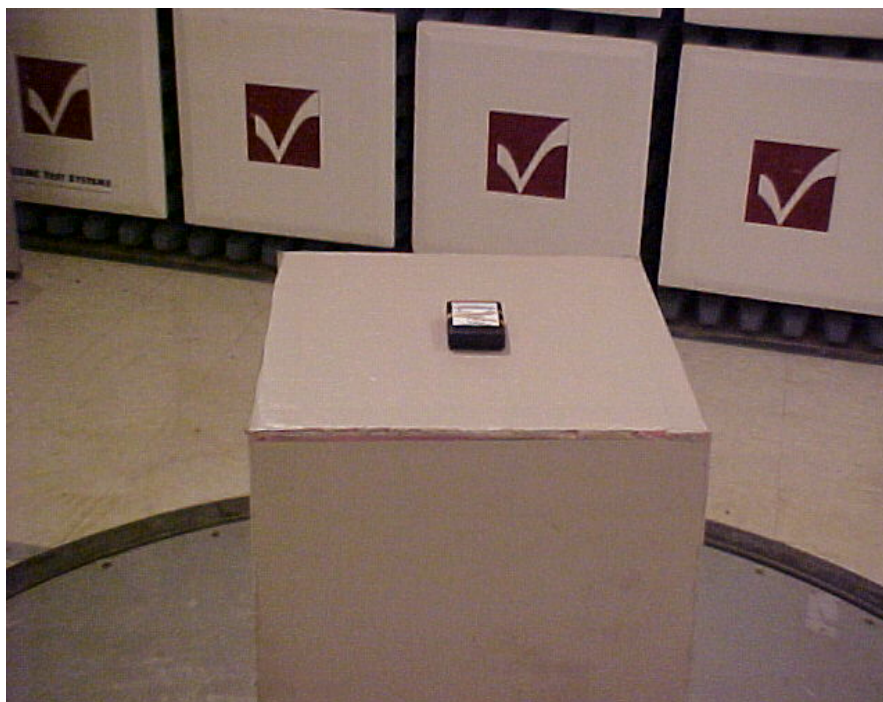


Photos Taken During Radiated Emission Testing

Setup for the Radiated Emissions Test

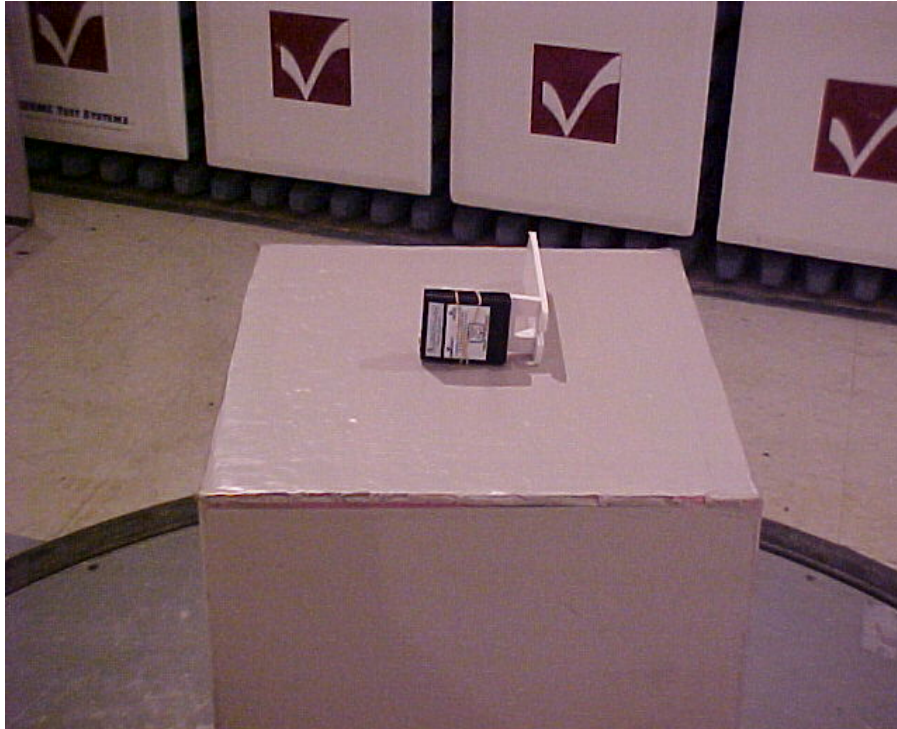


Vertical orientation



Flat orientation

Angel Medical Systems - EXD-Test Setup Photos



Side orientation

All tests were performed according to Section 95.639 (f) (2) (i).

Attached are additional pictures showing this set-up.

The simulation liquid follows the recommendations per FCC 95.639 (f) (2) (ii)
“Suitable Tissue Substitute Material per Bioelectromagnetics 8:29-36 (1987)

Photo One showing Diameter to be +/- 30cm (actual is 12inches x 2.54 = 30.48cm's)

Blue platform supports the product during testing.

Wall Thickness to be: +/- .635cm's exactly.

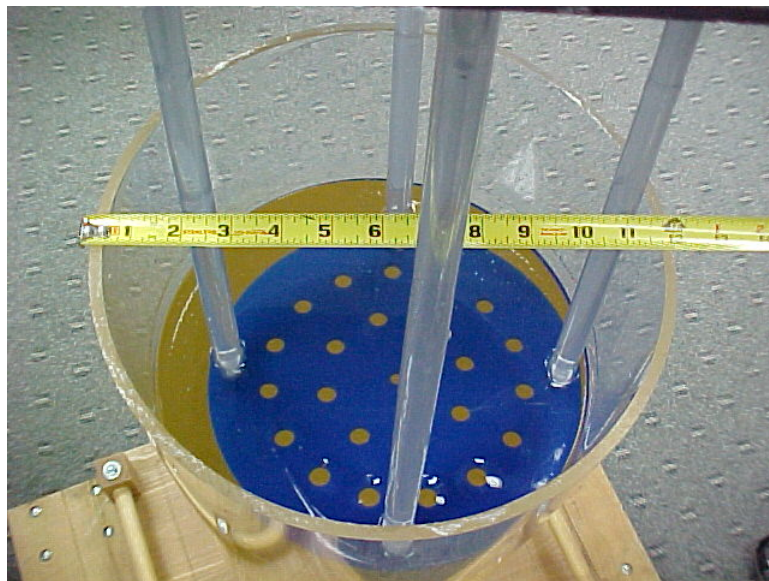
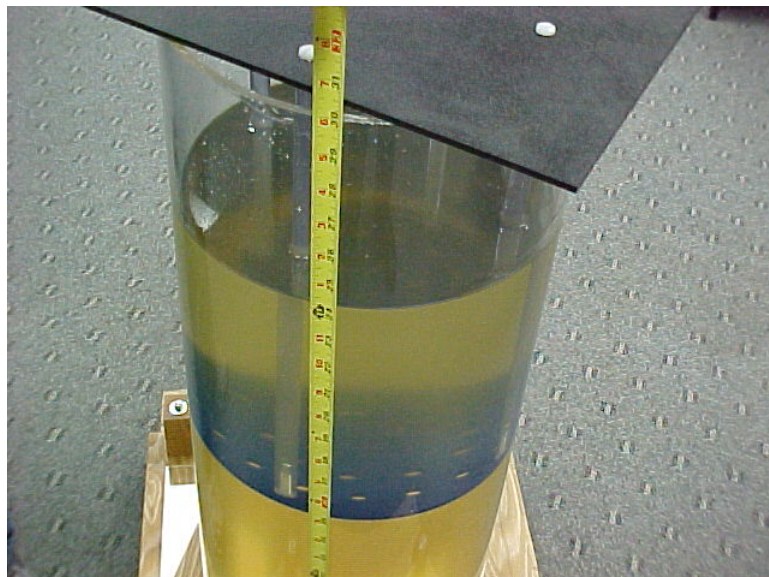


Photo Two showing Height to be +/- 76cm (actual is 30 inches x 2.54 = 76.2cm's)



**Photo Three showing the Simulation Liquid per “Bioelectromagnetics”
published article in 1987.**

