





EMI D

Seagate Pipeline HD™ 2
500 GB
S/N: 9VVCPLD8
+5V 0.318 A
+12V 0.155 A
Product of Thailand

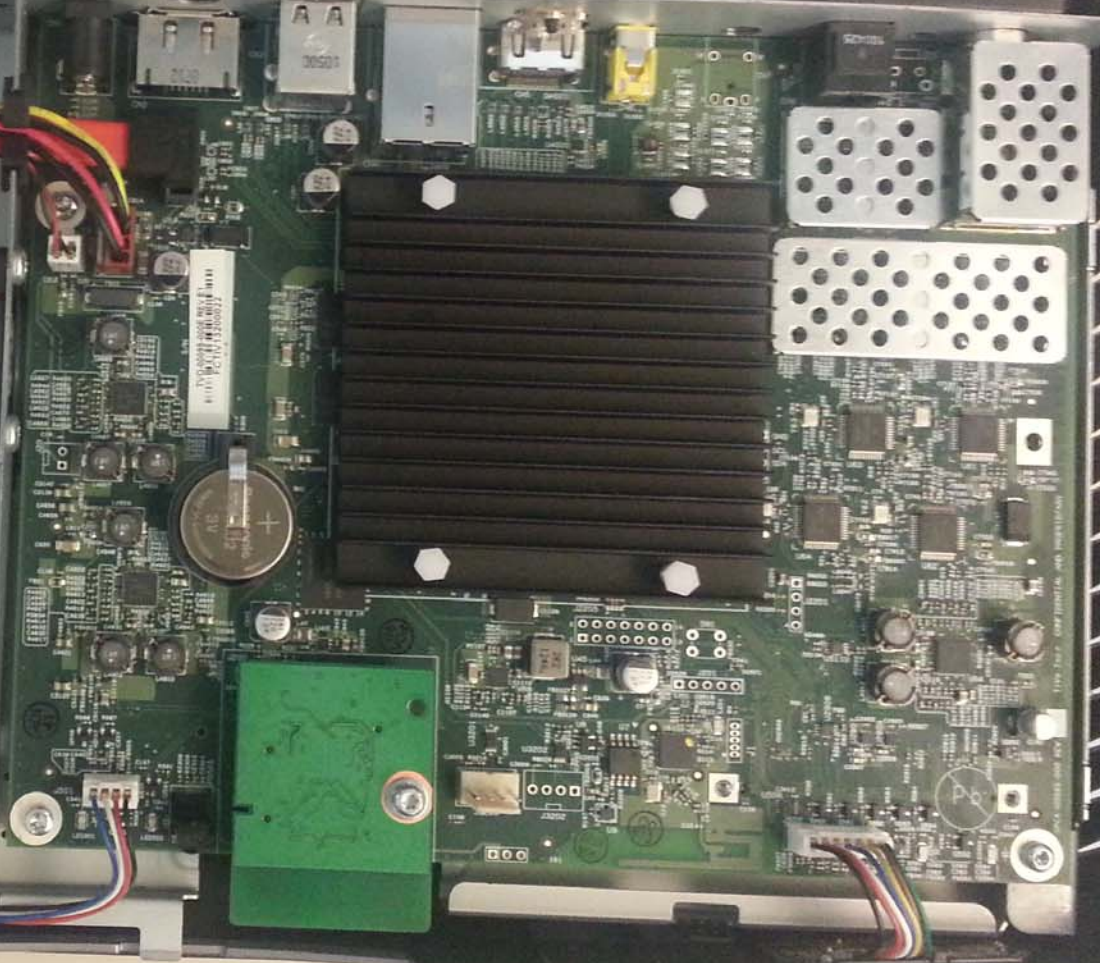
Caution: Product warranty is void if any seal or label is removed, or if the drive experiences shock in excess of 30G Gs.
Need support? Visit www.seagate.com.

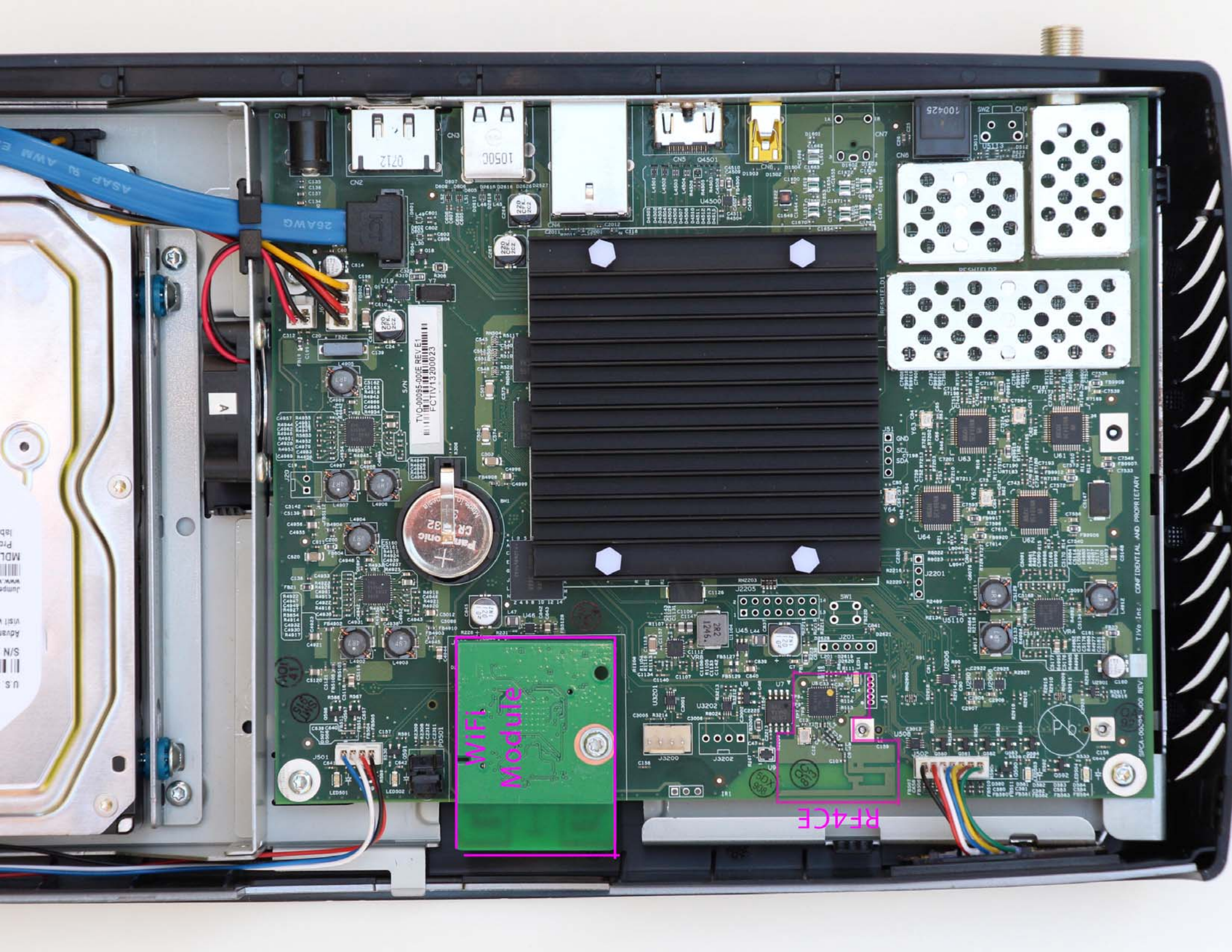
Installation Summary
For help installing use Seagate's **QuickStart™** software, available at www.seagate.com/qs. Always backup critical data before making changes to a computer and update BIOS firmware before installing. See your computer or system administrator for update options and any system device drivers.
1. Mount the drive using the screws per step 2a. Do not use ratchet the screws.
2. Insert the cables. The data interface and power cables are labeled.
3. Run your computer BIOS/disk setup program. Initialize the hard drive and set the format.
4. Reuse the drive for use with your Operating System. See your OS help instructions for details. Be careful to select the correct drive. Windows™ uses the Windows Disk Management tool to use to prepare the drive. Use the Windows software to copy data from an old drive to a new drive.
Go to www.seagate.com/support and select installation for additional instructions and literature. Microsoft uses Disk Utility in the previous 10.6.x editions and 10.7.x editions. Microsoft uses Disk Utility in the previous 10.6.x editions and 10.7.x editions.

402 Wiggly Seagate Technology LLC
3000 146219
Power Data
Seagate
Seagate Technology
Knoxville TN 37738
© 2008 Seagate Technology LLC
Seagate, Pipeline, and QuickStart are trademarks of Seagate Technology LLC.
Microsoft, Windows, and Windows Vista are trademarks of Microsoft Corporation in the United States and other countries.



M229





WiFi
Module

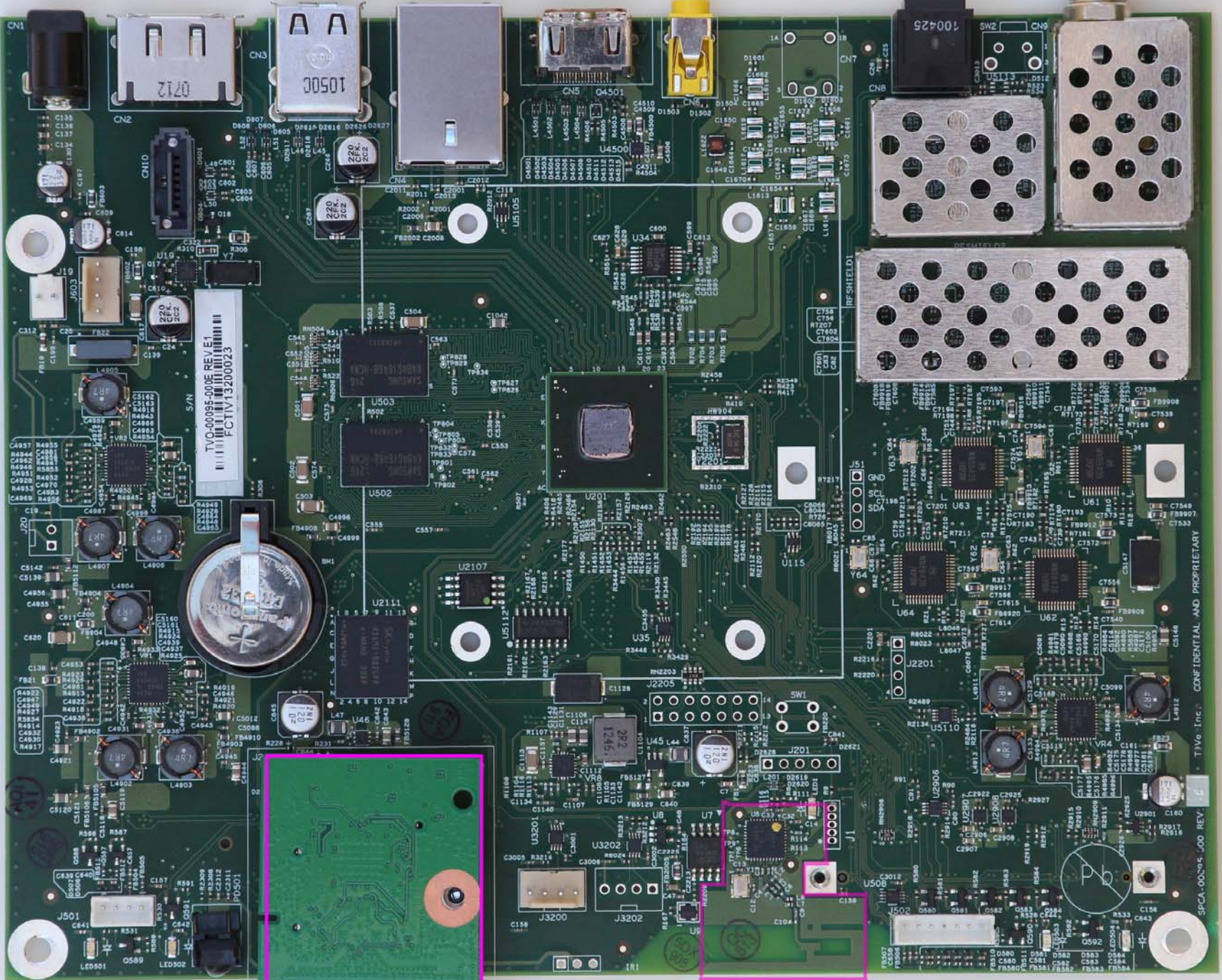
RFACE

TIVO-00055-000E REV E1
FCT1V13.200023

Parasonic
CR 32

TIVO, Inc. CONFIDENTIAL AND PROPRIETARY

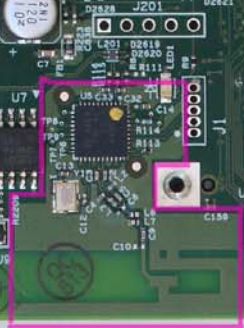
BPCC-00055-000 REV



TVO-00095-000E REV. E1
FC1V13200023



WiFi!



RF4CE

SFCA-00095_000 REV. 1.0 TIVO Inc. CONFIDENTIAL AND PROPRIETARY

RF4CE

