

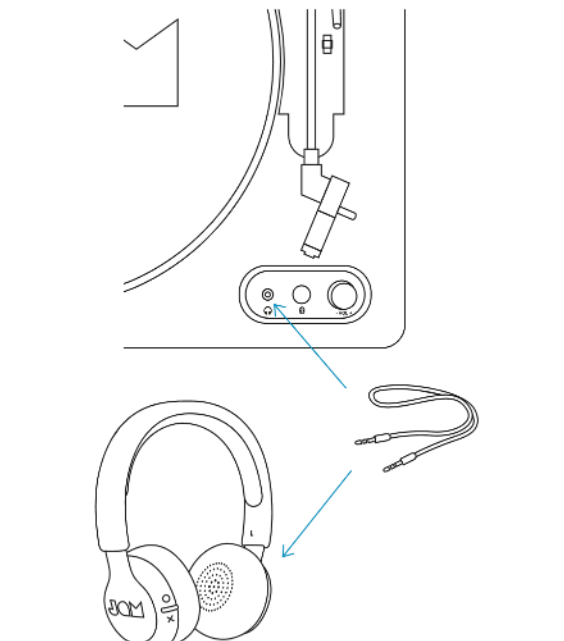
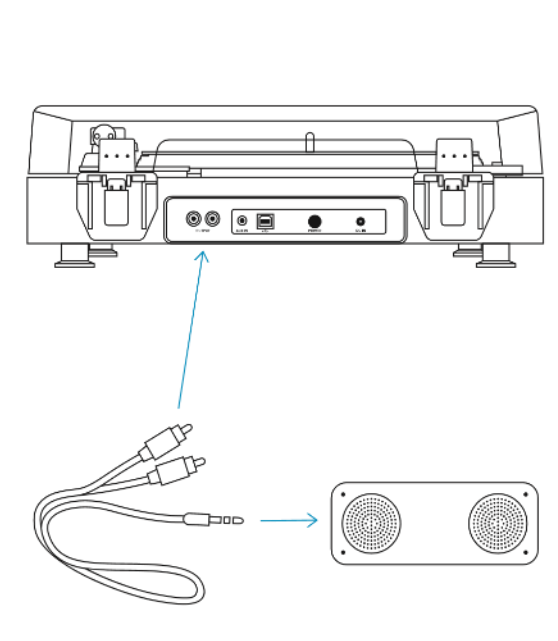
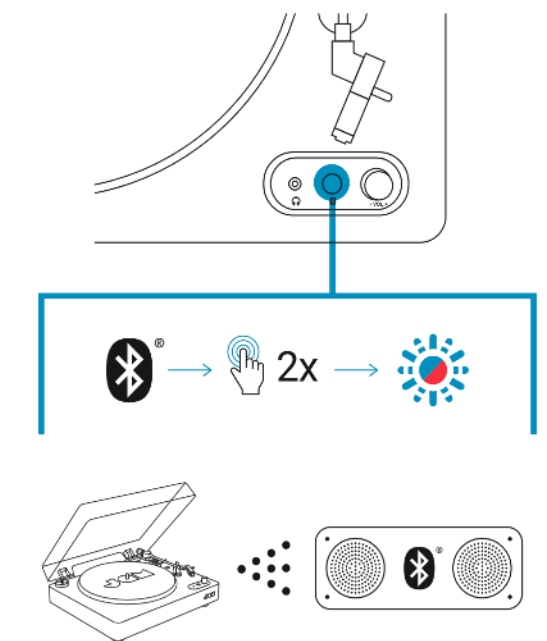
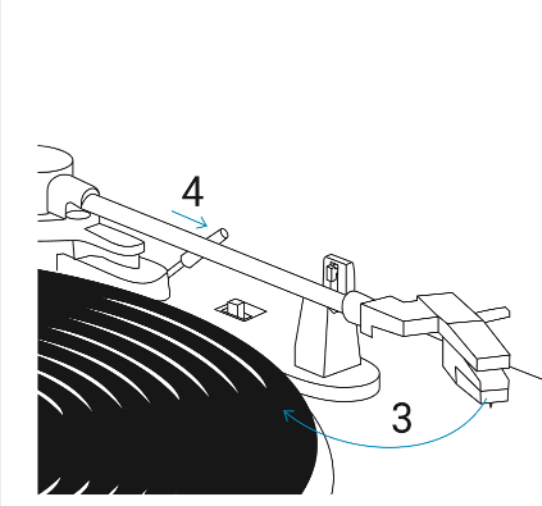
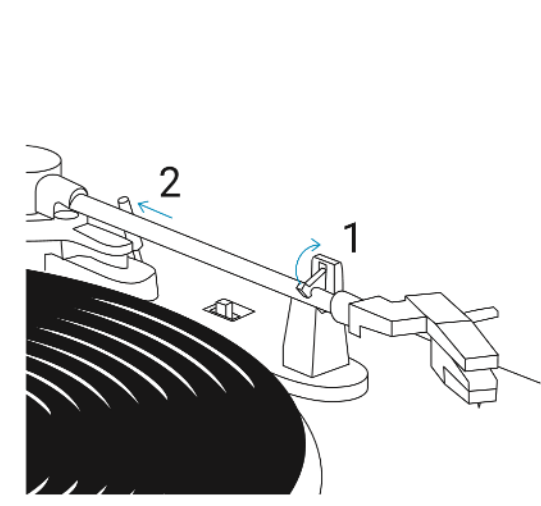
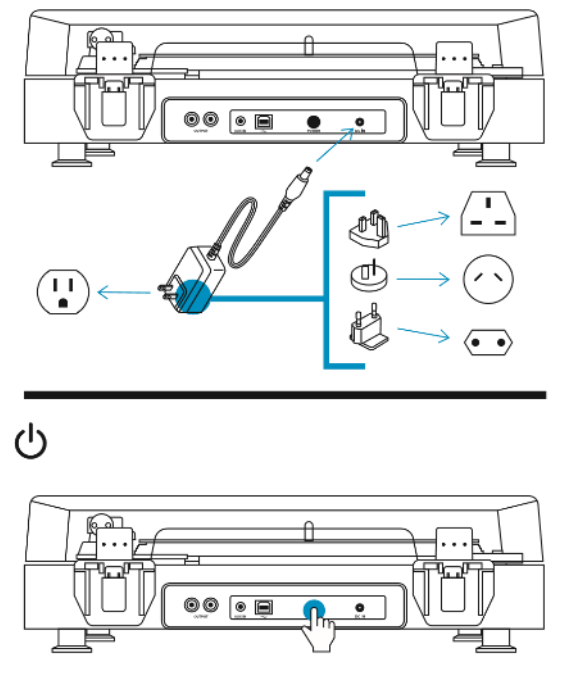
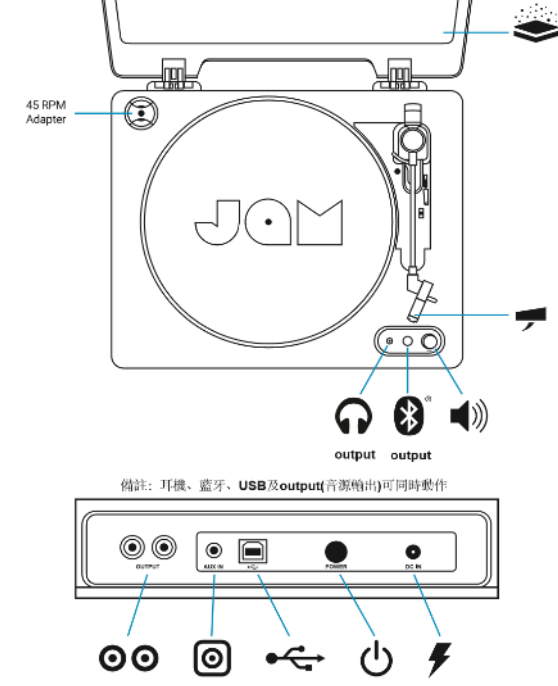
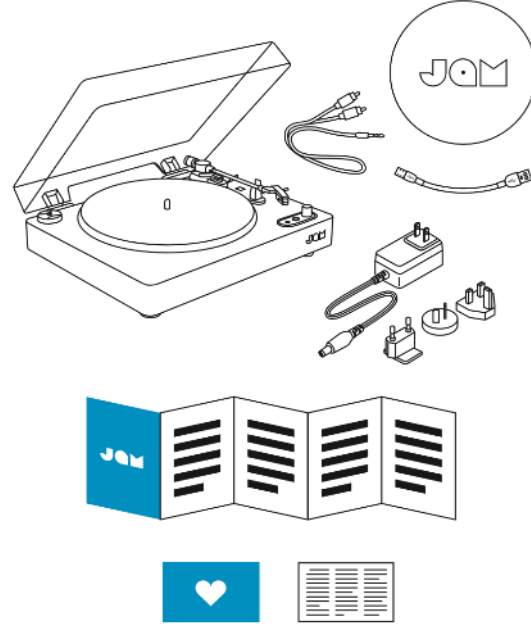
JAM







SPUN OUT

HX-TT400B
Quickstart Guide
Guide de démarrage rapide
Guía de inicio rápido
Schnellstartanleitung
Guia rápida



QS-HXTT400B © 2022 JAM. All Rights Reserved. Jam is trademark of HMDX. / Tous droits réservés / Todos derechos reservados / Alle Rechte vorbehalten / Tutti i diritti riservati



	<p>RECYCLING</p> <p>This product bears the selective sorting symbol for Waste electrical and electronic equipment (WEEE). This means that this product must be handled pursuant to European directive 2012/19/EU in order to be recycled or dismantled to minimize its impact on the environment.</p> <p>User has the choice to give his product to a competent recycling organization or to the retailer when he buys a new electrical or electronic equipment.</p>
	<p>The symbol indicates class II equipment</p>
	<p>The symbol indicates AC voltage</p>
	<p>The symbol indicates DC voltage</p>
	<p>For indoor use only</p>
	<p>The symbol indicates energy efficiency marking.</p>
<p>The power adaptor plug is used as the disconnect device, The connected AC power outlet must be located near the equipment and be easily accessible.</p>	
<p>Warning: To avoid risk of fire, the equipment is supplied only by external power source of which output shall comply with requirement of PS1 (with output capacity less than 15W)</p>	
<p>Adapter information Manufacturer: Dong Guan Royal Intelligent Co., Ltd. Model: BI12T-120025-I Input: 100-240V~50/60Hz 0.5A Output: 12Vdc 0.25A 3W Average active efficiency: 78.05% (min.) Efficiency at low load (10 %): N/A No-load power consumption: 0.057W (max.)</p>	
<p>The marking information is located at the bottom of the apparatus.</p>	