

Installation Instructions

W1RT SERIES Wall Mount Wireless Digital RH/T Transmitters

- Read instructions thoroughly prior to installation.
- This product is not intended for life safety, or time-critical control applications. Wireless sensor products should only be considered for monitoring and over-riding non-critical systems.
- Wireless sensor products are typically prohibited in hospitals and other locations where cell phones and radio transmissions are restricted.

Applications shown are suggested means of installing sensors, but it is the responsibility of the installer to ensure that the installation is in compliance with all national and local codes. Installation should be attempted only by individuals familiar with codes, standards, and proper safety procedures for control installations.

VERIS INDUSTRIES

PORTLAND, OREGON USA
(503) 598-4564 FAX (503) 598-4664
1-800-354-8556
<http://www.veris.com> email:sales@veris.com



INSTALLATION INSTRUCTIONS

FCC Requirements:

This device complies with part 15 of the FCC Rules. Operation is subject to the following two conditions: (1) This device may not cause harmful interference, and (2) this device must accept any interference received, including interference that may cause undesired operation. This equipment generates, uses and can radiate radio frequency energy and, if not installed and used in accordance with the instructions, may cause harmful interference to radio communications. However, there is no guarantee that interference will not occur in a particular installation. If this equipment does cause harmful interference to radio or television reception, which can be determined by turning the equipment off and on, the user is encouraged to try to correct the interference by one or more of the following measures:

- Reorient or relocate the receiving antenna.
- Increase the separation between the equipment and receiver.
- Consult the dealer or an experienced radio/TV technician for help

Changes or modifications not expressly approved by Veris Industries could void the user's authority to operate the equipment.

Tape Mounting:

Evaluate the potential for damage to the wall surface and assure that the tape used has adequate strength for the application. If acceptable, the mounting tape supplied, or similar, may be used to mount the sensor to a clean, dry surface. Avoid blocking any ventilation openings.



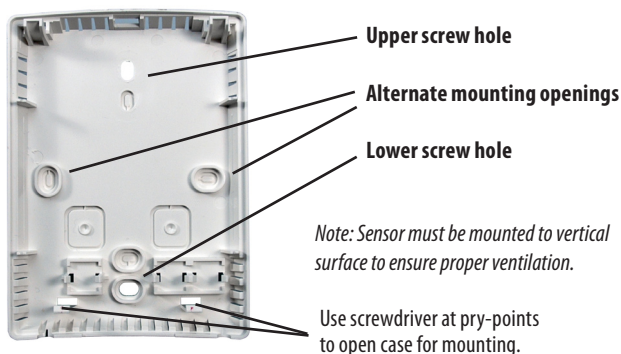
NOTE: The operation and range of all wireless sensors are affected by site conditions. Reception rates may vary due to physical characteristics of the occupied site after the initial commissioning.

Sensor Location and Backplate Mounting

Select a mounting location with good air circulation away from direct sun, ventilation inlets, doors, windows, or other fresh air entry points. For room installation, the sensor should be mounted at least 4-1/2 feet above the floor.

Screw Mounting:

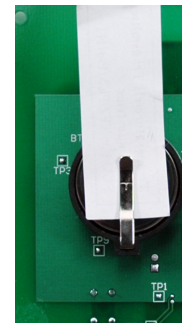
The backplate may be flush mounted on a wall, or mounted on a standard US or European single gang junction box. Use the backplate as a template for locating holes for mounting screws. Mount the backplate using screws provided. Wall anchors are recommended for drywall installations.



Battery

READ LITHIUM BATTERY WARNINGS ON PAGE 2

Remove the insulating material separating the battery from the terminal to connect battery and start sensor operation. Be sure insulating material is completely removed.



Reset Device

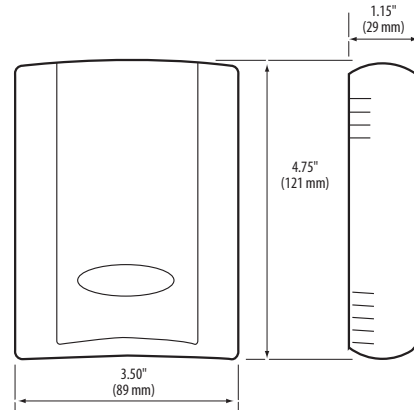
Once the battery is connected, press and hold the RESET switch for one second to assure that the sensor initializes properly.

Cover Installation

Install cover plate as shown. Cover plate may be removed using a screwdriver as needed to access RESET and TRANSMIT switches.



DIMENSIONAL DRAWING



Switches:

RESET may be used to reinitialize the sensor as needed, e.g. when replacing the battery.

TRANSMIT initiates a single manual data packet transmission. Suitable for testing and commissioning.

SPECIFICATIONS

<i>Transmitter</i>	
Input Power	CR2450 lithium Battery (5 year battery life@25°C)
Temp Output	0 - 50°C (32 - 122°F)
Sensor Type	Solid-state, integrated circuit
Temperature Accuracy	±0.5°C (±1°F)
Humidity Accuracy	2%
Storage Temp	0 - 50°C (32 - 122°F)
Housing Dimensions	3.50" (89 mm) x 4.75" (121 mm) x 1.15" (29 mm)
Frequency	418 MHz
Transmit Power	1 mW
Transmit Range	100-300 ft. (indoor)
Transmit Interval	60 sec.

LITHIUM BATTERY WARNINGS

Lithium batteries can burn, or explode if abused, heated, shorted, installed backwards, or exposed to water.
OBSERVE PROPER POLARITY DURING INSTALLATION.
DO NOT place the battery in fire, incinerate, or heat the battery. Avoid locations subject to direct sunlight.
DO NOT strike, or pierce the battery, or otherwise subject it to strong impacts, or shocks.
DO NOT expose the battery to water.
Dispose of lithium batteries properly and according to applicable regulations. Insulate the terminals before disposal to prevent shorting.